

## General Administration

(non-EM-specific duties)

### Distribution to key staff members, as appropriate

- Best Run Government (includes Lean/Visual Management)
- Equity/Social Justice
- Employee Giving
- Strategic, Business, and Implementation Plans
- Team-building/Social Events
- City Liaison Program
- County Department Liaison Program

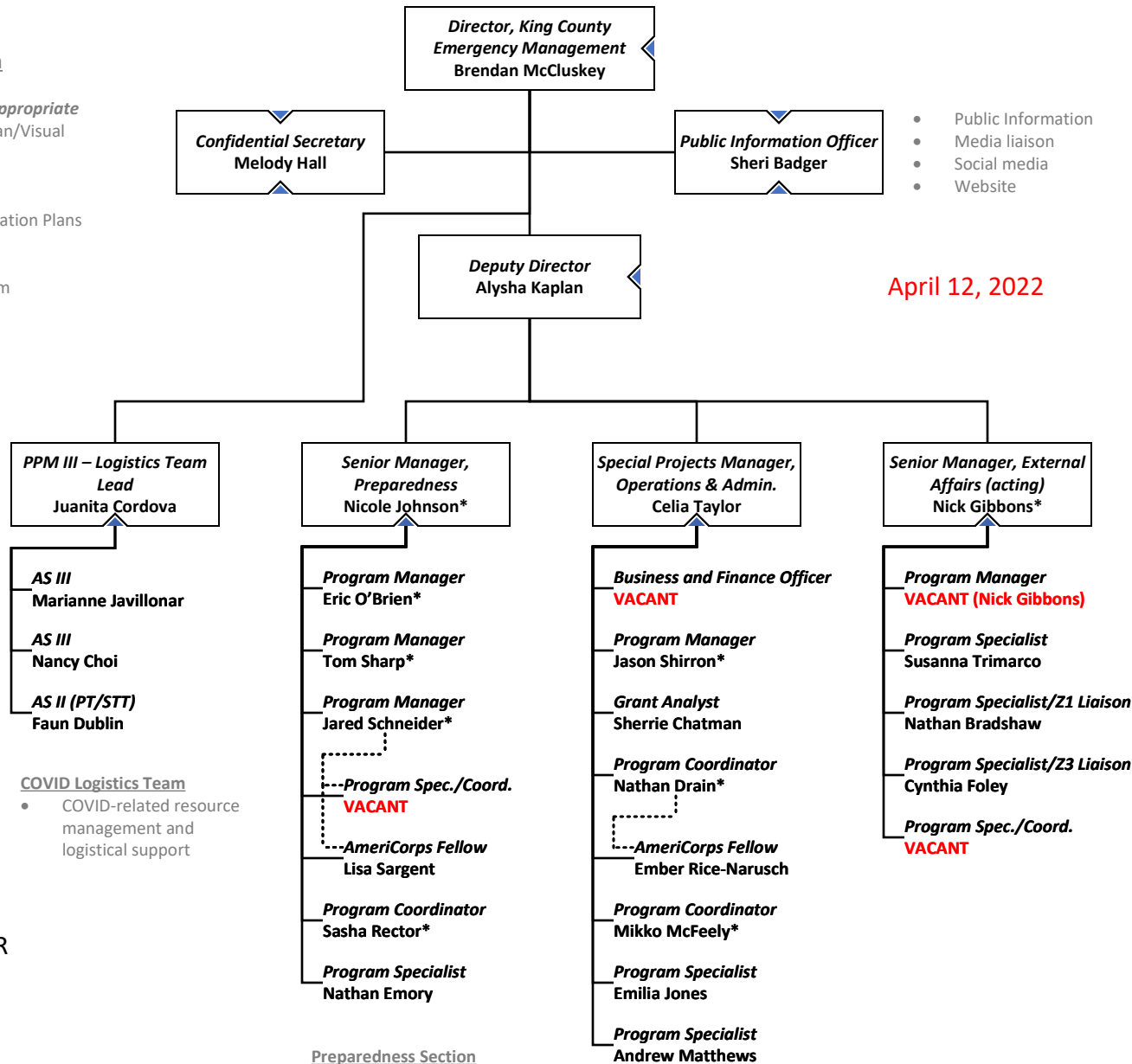


## King County Emergency Management

RCECC  
3511 NE 2<sup>nd</sup> Street  
Renton, WA 98056  
206-296-3830

- Public Information
- Media liaison
- Social media
- Website

April 12, 2022



### COVID Logistics Team

- COVID-related resource management and logistical support

### External Affairs Section

- Advisory Committees  
EMAC, EMCC, UAWG
- Public Education & Outreach
- Zone Liaison  
Cities, UACs/CSAs, Schools, Special Districts, Private Sector
- Government Affairs
- Regional Coordination Framework/Agreement

\* = DUTY OFFICER

### Preparedness Section

- Planning System
- CEMP & Other Plans
- OEM Continuity
- Training
- Exercises
- Catastrophic Plans  
SCIPT & RCPT
- LEPC
- Mitigation
- SCAP
- Dam Safety

### Operations & Administration Section

- EOC and Facilities Technology
- Alert & Warning Systems
- Volunteers
- Crisis Management Plan
- Recovery Plan
- PA & IA Programs
- Duty Officer Program
- 1st Responder Liaison
- COVID Finance Coordination
- Vax Finance Review
- Grant and contract management
- Budget
- Procurement

- Accounting
- Food Access Strike Team
- General Administration
- Records Management
- Timekeeping
- Compliance
- Asset Management