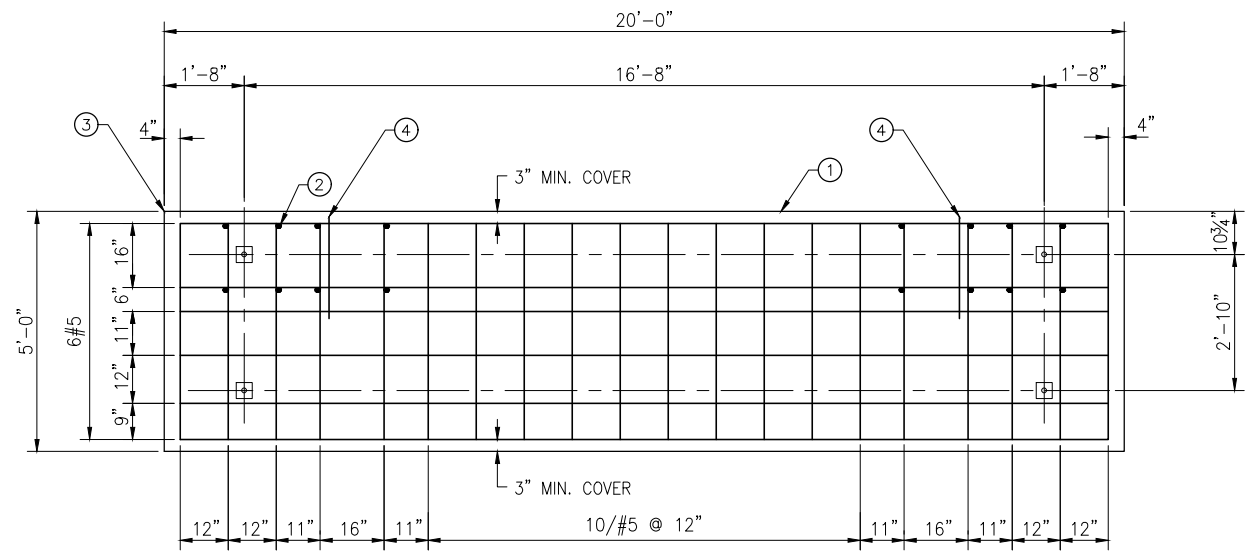


RAPIDRIDE RR-20 SHELTER FOOTING (FOR RR206/RR208/RR208B/F22)
REBAR BLOCKOUTS FOR SHELTER ANCHOR BOLTS

DETAIL 1
SCALE: NONE

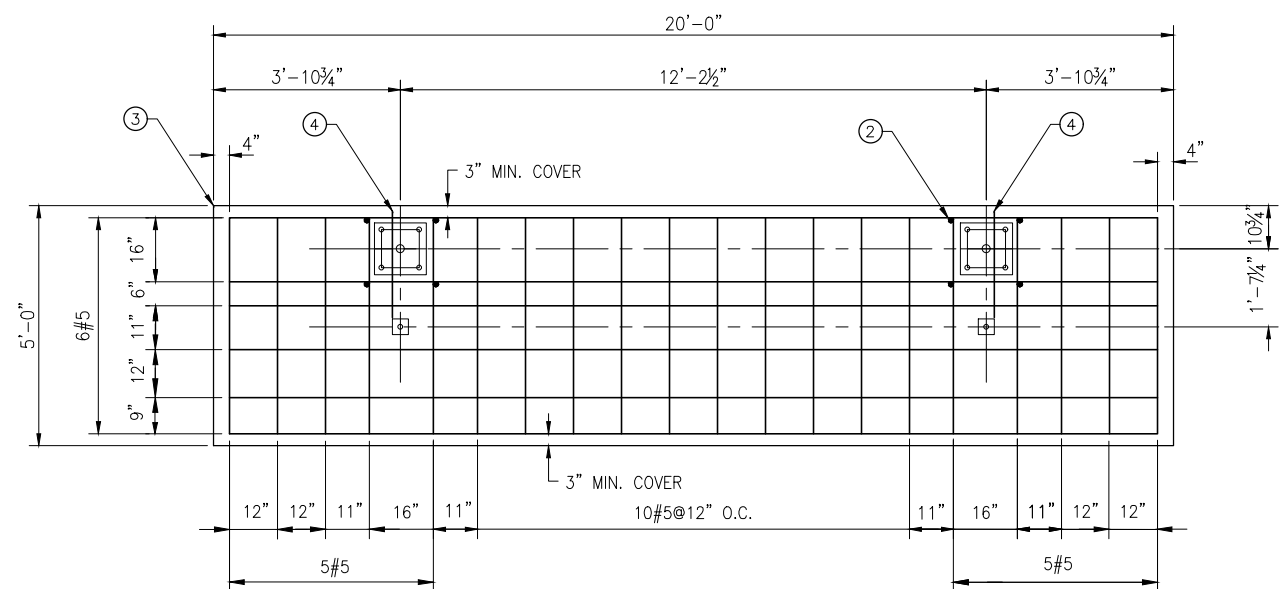
CONSTRUCTION NOTES ○

1. JOINT PER DET 3/D101 TO ISOLATE EDGES FROM PAVEMENT, SIDEWALKS, OR OTHER STRUCTURES.
2. #4 VERTICAL EPOXY-COATED BARS 6" EMBEDMENT INTO SOIL FOR RESTRAINT (TYP).
3. POINT OF REFERENCE, (SEE NOTE 1/D101).
4. 20" LONG #5 REBAR @ 6" OFFSET FROM THE ADJACENT REBAR. BOTH TOP & BOTTOM LAYERS.



RAPIDRIDE RR-20 SHELTER FOOTING (FOR F-22)

DETAIL 2
SCALE: NONE



RAPIDRIDE RR-20 SHELTER FOOTING (FOR RR206/RR208/RR208B)

DETAIL 3
SCALE: NONE

KCMT 2021-2022 STANDARD DETAILS

No.	REVISION	BY	APP'D	DATE



DESIGNED: K. CHANG YUEN	APPROVED: P. ENG
DRAWN: L. ANDERSON	PROJECT NO.:
CHECKED: K. CHANG YUEN	CONTRACT NO.:
CHECKED: C. ASQUITH	



METRO TRANSIT CAPITAL DIVISION
TRANSIT PASSENGER FACILITIES - IMPROVEMENTS

RAPIDRIDE SHELTER FOOTING
REBAR LAYOUT DETAILS

DATE: 05/2022
DRAWING NO: D101B
SHEET NO. OF 6 20