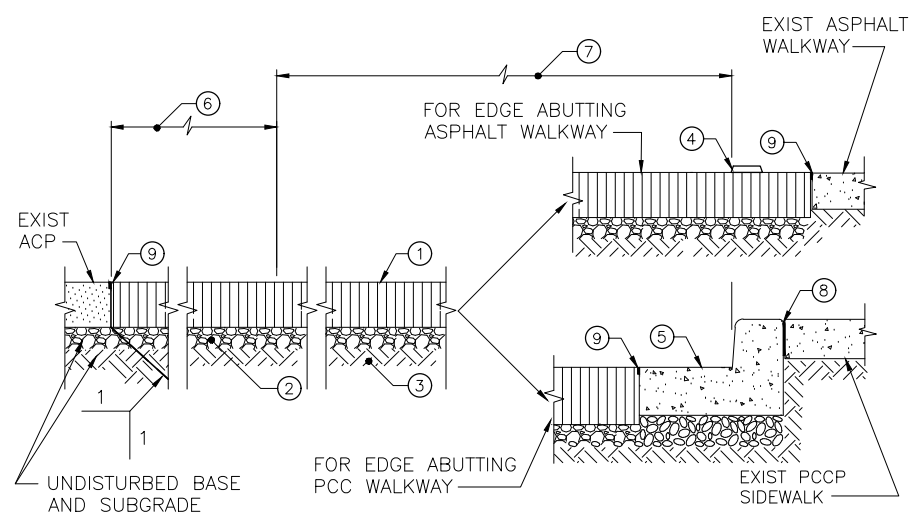
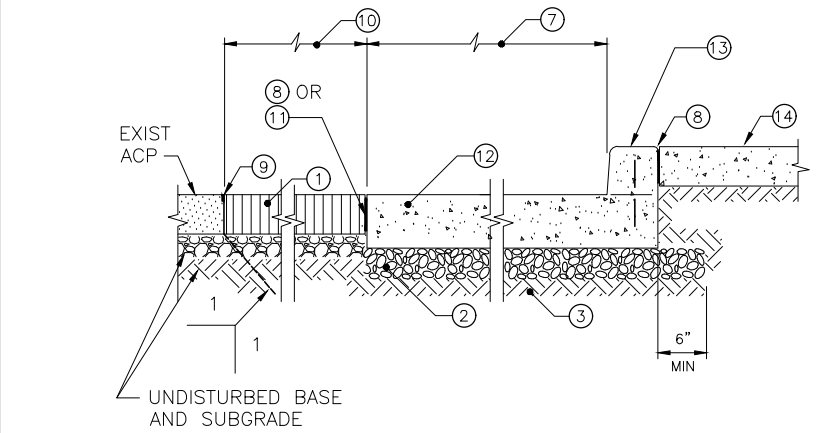


I:\DOT\kingcounty\dot\transit\CCAD_Facilities\Projects\passenger_facilities\standard_details\2021-2022\standard_details\0100A.dwg | Layout: C510.01_01-6-08
 PLOTTED: May 19, 2022 9:03:53pm By: dbernet
 XREFS: KCMTD-BORDER.dwg IMAGES:



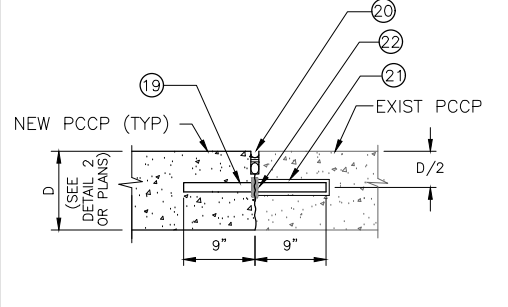
**ASPHALT CONCRETE PAVED BUS PULLOUT
TYPICAL CROSS SECTION**

DETAIL
SCALE: NONE



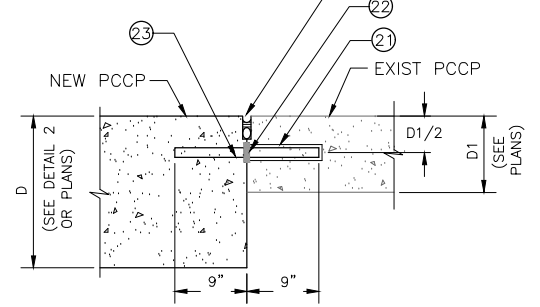
**PORTLAND CEMENT CONCRETE PAVED BUS PULLOUT
TYPICAL CROSS SECTION**

DETAIL
SCALE: NONE



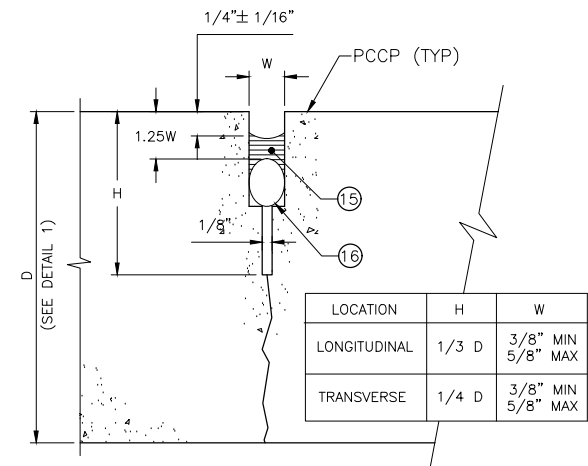
**CONSTRUCTION JOINT
TYPE 3
LONGITUDINAL OR TRANSVERSE**

DETAIL
SCALE: NONE



**CONSTRUCTION JOINT
TYPE 4
LONGITUDINAL OR TRANSVERSE**

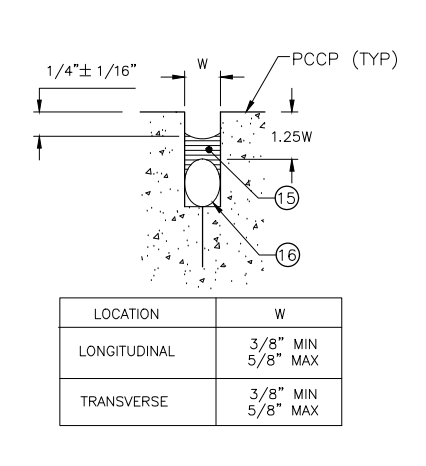
DETAIL
SCALE: NONE



CONTROL JOINT SEAL

DETAIL
SCALE: NONE

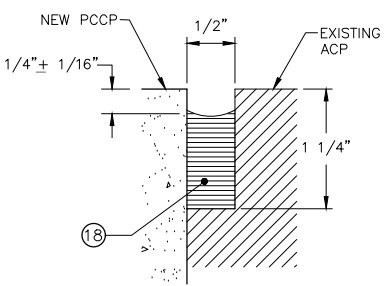
LOCATION	H	W
LONGITUDINAL	1/3 D	3/8" MIN 5/8" MAX
TRANSVERSE	1/4 D	3/8" MIN 5/8" MAX



CONSTRUCTION JOINT SEAL

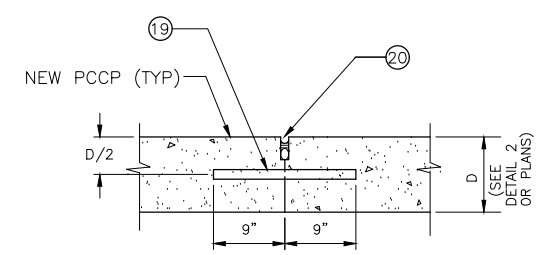
DETAIL
SCALE: NONE

LOCATION	W
LONGITUDINAL	3/8" MIN 5/8" MAX
TRANSVERSE	3/8" MIN 5/8" MAX



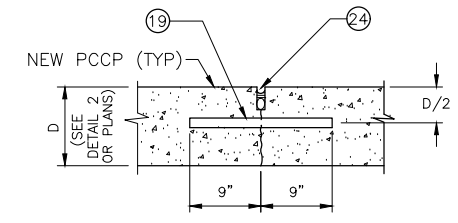
JOINT SEAL

DETAIL
SCALE: NONE



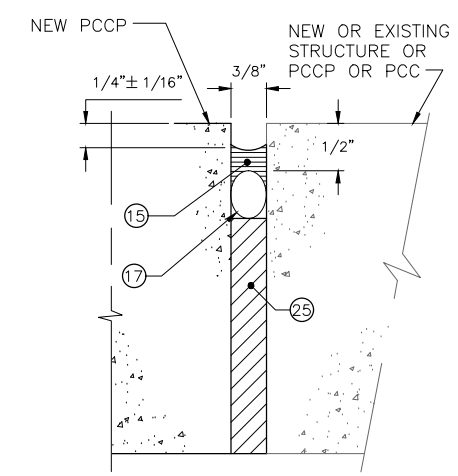
**CONSTRUCTION JOINT
TYPE 1
LONGITUDINAL OR TRANSVERSE**

DETAIL
SCALE: NONE



**CONTROL JOINT
TYPE 1
LONGITUDINAL OR TRANSVERSE**

DETAIL
SCALE: NONE



ISOLATION JOINT

DETAIL
SCALE: NONE

DOWEL SETTING NOTES

- A. SET DOWELS AT 90° FROM ALL POINTS OF THE FACE OF THE PCCP PANELS.
- B. GREASE THE HALF OF ALL DOWELS TO GO IN NEW PCCP.
- C. SET DOWEL FOR JOINTS BETWEEN NEW AND EXISTING PCCP FOLLOWING THE SUBSEQUENT PROCEDURES:
 1. DRILL HOLES ON EXISTING PCCP PANELS THAT ARE 1/16" LARGER IN DIAMETER THAN THE DOWEL AND AT 90° FROM ALL POINTS OF THE FACE OF THE PANELS. REMOVE DEBRIS FROM HOLES BY BLOWING THEM WITH COMPRESSED AIR. ENSURE THAT THE HOLES ARE DRY.
 2. AFTER THE PROJECT REPRESENTATIVE HAS VERIFIED COMPLIANCE WITH "1" ABOVE, PLACE SUFFICIENT EPOXY GROUT IN THE BACK OF THE HOLES TO COMPLETELY FILL THE GAP BETWEEN THE DOWELS AND THE WALL OF THE HOLES. USE FLEXIBLE TUBES OR CARTRIDGES WITH LONG NOZZLES TO ENSURE THAT THE GROUT IS PLACED AT THE BACK OF THE HOLES.
 3. AFTER PLACING THE GROUT AS DESCRIBED IN "2" ABOVE, PLACE A THIN, PLASTIC GROUT RETENTION DISK OVER THE DOWELS SO THEY WILL REST AGAINST THE FACE OF THE EXISTING PCCP PANELS AND PREVENT THE GROUT MATERIAL FROM FLOWING OUT OF THE HOLES. WITH THE RETENTION DISKS IN PLACE, INSERT THE DOWELS INTO THE HOLES WITH A TWISTING MOTION SO THAT THE MATERIAL IN THE BACK OF THE HOLES IS FORCED OUT AND AROUND THE DOWELS. USE CHAIRS, OR OTHER PRODUCT OF NON-CORRODING MATERIAL, TO MAINTAIN THE DOWELS AT THE CENTER OF THE HOLES, AND AT 90° FROM THE FACE OF THE PANEL.
 4. SLIGHTLY GREASE THE PROTRUDING END OF THE DOWELS.
 5. OBTAIN APPROVAL OF THE DOWEL INSTALLATION FROM THE PROJECT REPRESENTATIVE PRIOR TO PROCEEDING WITH PLACEMENT OF NEW PCCP.

CONSTRUCTION NOTES

1. NEW ACP HMA CLASS 1/2", PG 70-22ER PER TSS 9.02.1(4), 7" MINIMUM COMPACTED THICKNESS, UNLESS OTHERWISE NOTED ON THE PLANS.
2. 4" MINIMUM THICKNESS OF CRUSHED ROCK BASE COMPACTED TO 95% OF MAXIMUM DRY DENSITY PER MODIFIED PROCTOR, UNLESS OTHERWISE NOTED ON PLANS.
3. SUBGRADE SCARIFIED TO 6" MINIMUM DEPTH AND COMPACTED TO 95% OF MAXIMUM DENSITY AT OPTIMUM MOISTURE PER PROCTOR.
4. WHEN NEW PAVEMENT ABUTS EXISTING AC PAVED WALKWAYS PLACE MUTCD-APPROVED, WHITE, REFLECTIVE, RAISED PAVEMENT MARKERS AT 12" OC AT THE EDGE OF THE PULLOUT LANE.
5. PORTLAND CEMENT CONCRETE CURB AND GUTTER.
6. 4'-0" MINIMUM, OR AS REQUIRED TO SET JOINT AWAY FROM VEHICLES NORMAL WHEEL PATH.
7. WIDTH OF PULLOUT LANE AS SHOWN ON PLANS.
8. SEE DETAIL 10/---.
9. SEE DETAIL 5/---.
10. 4'-0" MINIMUM, OR AS REQUIRED TO SET JOINT AWAY FROM VEHICLES NORMAL WHEEL PATH. USE ONLY IF NEW PCCP ABUTS EXISTING ACP. SEE NOTE 11.
11. IF NEW PCCP ABUTS EXISTING AC PAVED WALKWAYS PLACE MUTCD-APPROVED, WHITE, REFLECTIVE, RAISED PAVEMENT MARKERS AT 12" OC AT THE EDGE OF THE PULLOUT LANE.
12. NEW PCCP CLASS C-1, 10" MINIMUM THICKNESS, UNLESS OTHERWISE SHOWN ON PLANS.
13. DOWELED CURB PER 7/D109.
14. NEW PCC SIDEWALK OR LANDING PAD, AS SHOWN ON PLANS.
15. POURED SILICONE JOINT SEALANT.
16. BACKING ROD $\phi = 1.25W$.
17. BACKING ROD $\phi = 1/2"$.
18. LOW MODULUS HOT-POUR RUBBERIZED ASPHALT JOINT SEALANT.
19. ROUND, EPOXY-COATED, GRADE 60 SMOOTH STEEL DOWEL BAR, $\phi = 1/8D$, 18" LONG @ 12" OC (SEE NOTES A & B).
20. JOINT SEAL PER DETAIL 4/---.
21. DRILL EXISTING PCCP TO SET DOWELS IN EPOXY GROUT (SEE NOTE C).
22. GROUT RETENTION DISK (SEE NOTE C).
23. ROUND, EPOXY-COATED, GRADE 60 SMOOTH STEEL DOWEL BAR, $\phi = 1/8DI$, 18" LONG @ 12" OC (SEE NOTES A & B).
24. JOINT SEAL PER DETAIL 3/---.
25. FULL DEPTH PREMOLDED EXPANSION JOINT FILLER.

KCMT 2021-2022 STANDARD DETAILS				
No.	REVISION	BY	APPD	DATE



DESIGNED:	APPROVED:
K. CHANG YUEN	P. ENG
L. ANDERSON	PROJECT NO.:
K. CHANG YUEN	CONTRACT NO.:
C. ASQUITH	



METRO TRANSIT CAPITAL DIVISION TRANSIT PASSENGER FACILITIES - IMPROVEMENTS		DATE:
PAVING AND JOINT DETAILS		05/2022
DRAWING NO.:		D108A
SHEET NO. OF:		16 20