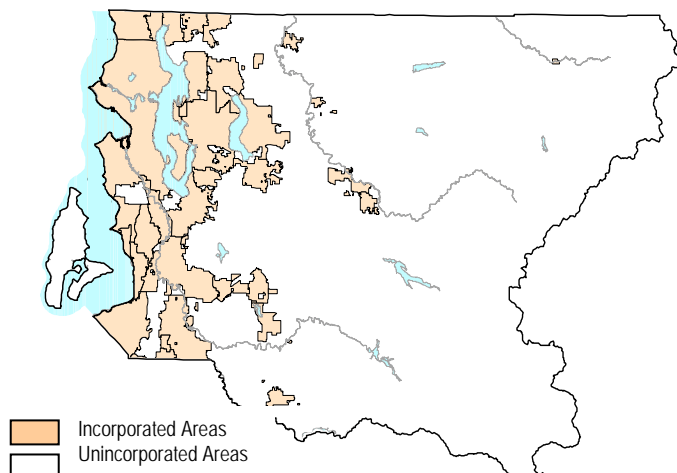


# Unincorporated King County Urban and Rural Areas

Unincorporated King County consists of both rural areas and urban areas outside city limits. Land uses include farms, forests, residential and some commercial uses. Since 1990, unincorporated King County experienced a net decrease of more than 170,000 people, bringing the 2008 total population to 341,000. The decrease was due chiefly to transfer of population into the cities through annexations and incorporations. Since 1990, eight cities have incorporated with a combined total of more than 150,000 people. Most of the unincorporated population, about 200,000 people, live in urban areas of western King County. Many of these urban communities are planned for timely annexation into adjoining cities. Eleven of these urban communities are featured in the profiles starting on page 126.



## QUICK FACTS

**Land Area:** 1,109,900 Acres or 1,734 Square Miles

**King County Council Districts:** parts of 8 Districts

**School Districts:** 17 Districts

**Water Districts:** 23 Districts

**Sewer Districts:** 11 Districts

**Fire Districts:** 29 Districts

## TAX INFO

**2008 Assessed Valuation:** \$50,633 million  
 '08 Uninc. Area Levy (\$1.605 per1,000): \$81,135,147

**2007 Real Estate Sales:** \$3,695 million  
 Local Option REET Revenue (0.5%): \$18,405,716

**2007 Taxable Retail Sales:** \$1,859 million  
 Local Option Sales Tax Rev (.85% of 1%): \$15,646,596

## EMPLOYMENT

**Number of Business Units:** 5,563

**Year 2007 Total Jobs:** 49,752

Construction&Resource: 9,909

WTU: 3,931

Manufacturing: 1,981

Retail: 3,932

Info/Technology: 2,002

Health: 3,006

Other Serv/FIRE: 14,085

Gov't/Education: 10,907

*Source: WA Employment Security Dep't, 2007*

## INCOME

**Median Household Income:** \$65,290

**Number of Households:** 125,942

**Households by Income Category:**

0 – 80% 36,000 (29%)

80 – 140% 35,000 (28%)

140%+ 55,000 (43%)

*Source: 2000 US Census*

## DEMOGRAPHICS

**2000 Census Population:** 352,500

**2008 Population:** 341,150

**Pop. Per Sq. Mile:** 194

**Median Age:** 36.2

**Age Structure:**

17 and under 98,700 28%

18 – 64 225,900 64%

65 and over 27,900 8%

**Race Categories:**

Non-hispanic White: 279,173 (79%)

Black or African Am.: 12,051 (3%)

Asian and Pacific Is: 30,809 (9%)

Native Am. and other: 4,170 (1%)

*Hispanic or Latino:* 15,420 (4%)

*Two or more race:* 10,841 (3%)

## HOUSING

**Total Housing Units:** 130,356

Single Family: 104,582

Multifamily: 18,694

Mobile Homes: 7,080

**Percent Homeowners:** 79%

**Average Household Size:** 2.79

**Median House Value:** \$240,000

**Median 2 Bedroom Rental:** \$790

*Source: 2000 US Census*

## DEVELOPMENT ACTIVITY

**2007 New Residential Units:** 1,847

Single Family: 1,387

Multifamily: 11 / 460

**2007 Formal Plats/Lots:**

Applications: 757 lots in 19 plats

Recordings: 892 lots in 17 plats

**2007 Residential Land Capacity:**

Vacant: In Acres: 1,627.50

In Units: 12,185

Redevelopable: In Acres: 3,028.60

In Units: 18,082