

Area 23 – Burien/ White Center

Area 24 – SeaTac/ Tukwila

Area 25 – Skyway/ Bryn Mawr

Area 96 – Burien/ Des Moines

Residential Revalue for 2021 Assessment Roll



King County

Department of Assessments

Setting values, serving the community, and pursuing excellence

500 Fourth Avenue, ADM-AS 0708

Seattle, WA 98104-2384

OFFICE (206) 296-7300 FAX (206) 296-0595

Email: assessor.info@kingcounty.gov

<http://www.kingcounty.gov/assessor/>



King County

Department of Assessments

500 Fourth Avenue, ADM-AS-0708
Seattle, WA 98104-2384

John Wilson
Assessor

OFFICE: (206) 296-7300 FAX (206) 296-0595

Email: assessor.info@kingcounty.gov

<http://www.kingcounty.gov/assessor/>

Dear Property Owners,

Our field appraisers work hard throughout the year to visit properties in neighborhoods across King County. As a result, new commercial and residential valuation notices are mailed as values are completed. We value your property at its "true and fair value," reflecting its highest and best use as prescribed by state law (RCW 84.40.030; WAC 458-07-030).

We continue to work to implement your feedback and ensure we provide you accurate and timely information. We have made significant improvements to our website and online tools to make interacting with us easier. The following report summarizes the results of the assessments for your area. Additionally, I have provided a brief tutorial on our property assessment process. It is meant to provide you with background information about our process and the basis for your area assessments.

Fairness, accuracy, and transparency set the foundation for an effective and accountable government. I am pleased to continue to incorporate your input as we make ongoing improvements to serve you. Our goal is to ensure every taxpayer is treated fairly and equitably.

Our office is here to serve you. Please don't hesitate to contact us if you ever have any questions, comments, or concerns about the property assessment process and how it relates to your property.

In Service,

John Wilson

King County Assessor



How Property Is Valued

King County along with Washington's 38 other counties use mass appraisal techniques to value all real property each year for property assessment purposes.

What Are Mass Appraisal Techniques?

In King County the Mass Appraisal process incorporates statistical testing, generally accepted valuation methods, and a set of property characteristics for approximately 700,000 residential, commercial and industrial properties. More specifically for residential property, we break up King County into 88 residential market areas and annually develop market models from the sale of properties using multiple regression statistical tools. The results of the market models are then applied to all similarly situated homes within the same appraisal area.

Are Properties Inspected?

All property in King County is physically inspected at least once during each six year cycle. Each year our appraisers inspect a different geographic area. An inspection is frequently an external observation of the property to confirm whether the property has changed by adding new improvements or shows signs of deterioration more than normal for the property's age. From the property inspections we update our property assessment records for each property. In cases where an appraiser has a question, they will leave or mail a card requesting the property owner contact them.

RCW 84.40.025 - Access to property

For the purpose of assessment and valuation of all taxable property in each county, any real or personal property in each county shall be subject to visitation, investigation, examination, discovery, and listing at any reasonable time by the county assessor of the county or by any employee thereof designated for this purpose by the assessor.

In any case of refusal to such access, the assessor shall request assistance from the department of revenue which may invoke the power granted by chapter [84.08](#) RCW.

How Are Property Sales Used?

For the annual revaluation of residential properties, three years of sales are analyzed with the sales prices time adjusted to January 1 of the current assessment year. Sales prices are adjusted for time to reflect that market prices change over time. During an increasing market, older sales prices often understate the current market value. Conversely, during downward (or recessionary) markets, older sales prices may overstate a property's value on January 1 of the assessment year unless sales are time adjusted. Hence time adjustments are an important element in the valuation process.

How is Assessment Uniformity Achieved?

We have adopted the Property Assessment Standards prescribed by the International Association of Assessing Officers that may be reviewed at www.IAAO.org. As part of our valuation process statistical testing is performed by reviewing the uniformity of assessments within each specific market area, property type, and quality grade or residence age. More specifically Coefficients of Dispersion (aka COD) are developed that show the uniformity of predicted property assessments. We have set our target CODs using the standards set by IAAO which are summarized in the following table:

Type of property - General	Type of property - Specific	COD Range
Single-family Residential (including residential condominiums)	Newer or more homogeneous areas	5.0 to 10.0
Single-family Residential	Older or more heterogeneous areas	5.0 to 15.0
Other residential	Rural, seasonal, recreational, manufactured housing, 2-4-unit housing	5.0 to 20.0
Income-producing properties	Larger Areas represented by large samples	5.0 to 15.0
Income-producing properties	Smaller areas represented by smaller samples	5.0 to 20.0
Vacant land		5.0 to 25.0
Other real and personal property		Varies with local conditions

Source: IAAO, *Standard on Ratio Studies*, 2013, Table 1-3

More results of the statistical testing process is found within the attached area report.

Requirements of State Law

Within Washington State, property is required to be revalued each year to market value based on its highest and best use. (RCW 84.41.030; 84.40.030; and WAC 458-07-030). Washington Courts have interpreted fair market value as the amount of money a buyer, willing but not obligated to buy, would pay to a seller willing but not obligated to sell. Highest and Best Use is simply viewed as the most profitable use that a property can be legally used for. In cases where a property is underutilized by a property owner, it still must be valued at its highest and best use.

Appraisal Area Reports

The following area report summarizes the property assessment activities and results for general market areas. The areas listed and analyzed in this report represent groupings combined for the purposes of determining time trend. Each area was analyzed separately for the final assessment level analysis. The area report is meant to comply with state law for appraisal documentation purposes as well as provide the public with insight into the mass appraisal process.



King County

Department of Assessments

King County Administration Bldg.
500 Fourth Avenue, ADM-AS-0708
Seattle, WA 98104-2384

John Wilson
Assessor

Area 23 - Burien/ White Center
Area 24 - SeaTac/ Tukwila
Area 25 - Skyway/ Bryn Mawr
Area 96 - Burien/ Des Moines

2021 Assessment Roll Year

Recommendation is made to post values for Areas 023, 024, 025 and 096 to the 2022 tax roll:

Appraiser II: Raju Pandey

03/9/2021

Date

WC District Senior Appraiser: Bob Kaldor

03/19/2021

Date

Residential Division Director: Jeff Darrow

03/23/2021

Date

This report is hereby accepted, and the values described in the attached documentation for Areas 023, 024, 025 and 096 should be posted to the 2022 tax roll.

John Wilson, King County Assessor

3/24/2021

Date



Executive Summary

Areas 023, 024, 025 and 096

Annual Update

Characteristics Based Market Adjustment for 2021 Assessment Roll

Appraisal Date: 1/1/2021
Area 23 Number of Improved Sales: 957
Area 24 Number of Improved Sales: 868
Area 25 Number of Improved Sales: 844
Area 96 Number of Improved Sales: 999

Range of Sale Dates: 1/1/2018 – 12/31/2020 Sales were time adjusted to 1/1/2021

Improved Valuation Change Summary – Sales and Population								
Area	2020 Total Value	2021 Total Value	\$ Change	% Change	Mean Sale Price	Ratio	2020 COD	2021 COD
Area 23 Sales	\$440,900	\$501,100	+\$60,200	+13.7%	\$547,000	91.8%	7.91%	7.84%
Area 23 Pop	\$403,000	\$458,900	+\$55,900	+13.9%				
Area 24 Sales	\$425,800	\$484,000	+\$58,200	+13.7%	\$526,500	91.9%	8.03%	8.01%
Area 24 Pop	\$400,600	\$455,600	+\$55,000	+13.7%				
Area 25 Sales	\$476,400	\$538,000	+\$61,600	+12.9%	\$585,000	92.0%	9.17%	8.96%
Area 25 Pop	\$444,800	\$502,600	+\$57,700	+13.0%				
Area 96 Sales	\$446,800	\$504,600	+\$57,800	+12.9%	\$549,900	91.7%	7.60%	7.51%
Area 96 Pop	\$420,000	\$475,400	+\$55,400	+13.2%				

Coefficient of Dispersion (COD) is a measure of the uniformity of the predicted assessed values for properties within this geographic area. Areas 023, 024, 025 and 096 are more homogenous market areas and the COD threshold prescribed by the International Association of Assessing Officers should be no more than 10%. The resulting COD meets or exceeds the industry assessment standards and have improved since the previous year.

The International Association of Assessing Officers recommends a range of 0.90 to 1.10. The resulting assessment level meets or exceeds the industry assessment standards and have improved since the previous year.

Areas 023 Annual Update Ratio Study Report

PRE-REVALUE RATIO ANALYSIS

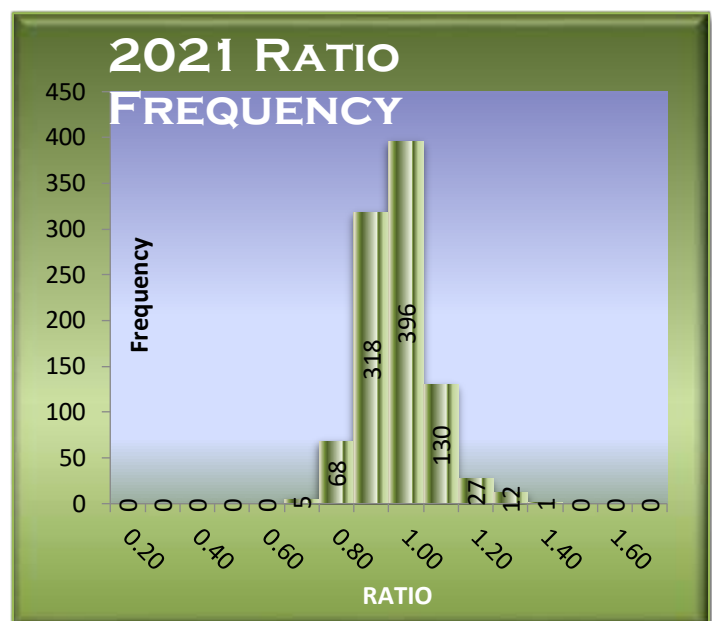
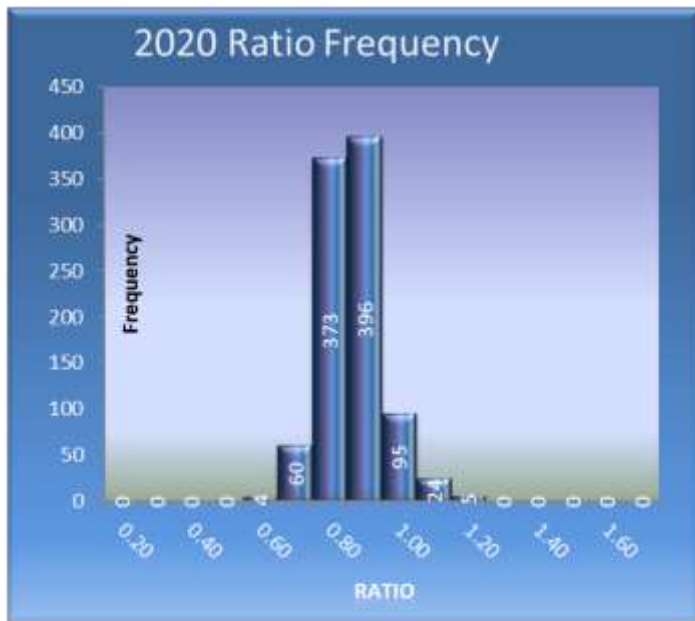
Pre-revalue ratio analysis compares time adjusted sales from 2018 through 2020 in relation to the previous assessed value as of 1/1/2020.

PRE-REVALUE RATIO SAMPLE STATISTICS	
Sample size (n)	957
Mean Assessed Value	\$440,900
Mean Adj. Sales Price	\$547,000
Standard Deviation AV	\$100,782
Standard Deviation SP	\$131,892
ASSESSMENT LEVEL	
Arithmetic Mean Ratio	0.813
Median Ratio	0.807
Weighted Mean Ratio	0.806
UNIFORMITY	
Lowest ratio	0.557
Highest ratio:	1.177
Coefficient of Dispersion	7.91%
Standard Deviation	0.084
Coefficient of Variation	10.33%
Price Related Differential (PRD)	1.009
Price Related Bias (PRB)	-0.052

POST-REVALUE RATIO ANALYSIS

Post revalue ratio analysis compares time adjusted sales from 2018 through 2020 and reflects the assessment level after the property has been revalued to 1/1/2021.

POST REVALUE RATIO SAMPLE STATISTICS	
Sample size (n)	957
Mean Assessed Value	\$501,100
Mean Sales Price	\$547,000
Standard Deviation AV	\$114,153
Standard Deviation SP	\$131,892
ASSESSMENT LEVEL	
Arithmetic Mean Ratio	0.924
Median Ratio	0.918
Weighted Mean Ratio	0.916
UNIFORMITY	
Lowest ratio	0.634
Highest ratio:	1.341
Coefficient of Dispersion	7.84%
Standard Deviation	0.095
Coefficient of Variation	10.32%
Price Related Differential (PRD)	1.009
Price Related Bias (PRB)	-0.056



Areas 024 Annual Update Ratio Study Report

PRE-REVALUE RATIO ANALYSIS

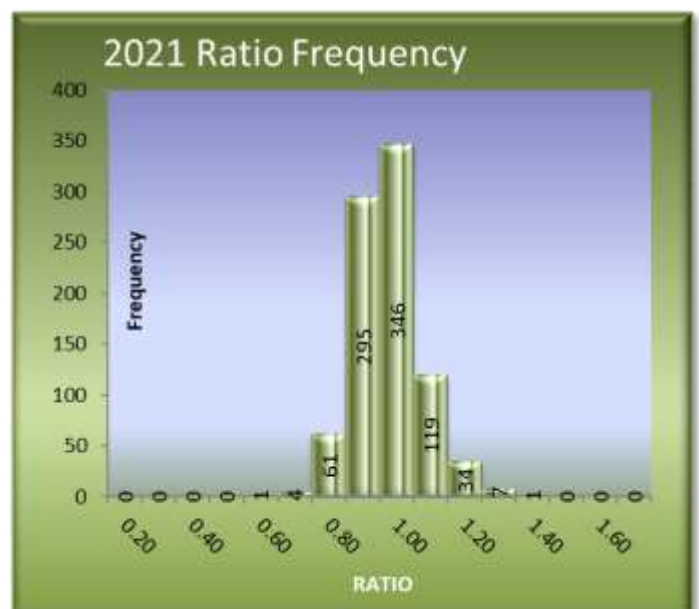
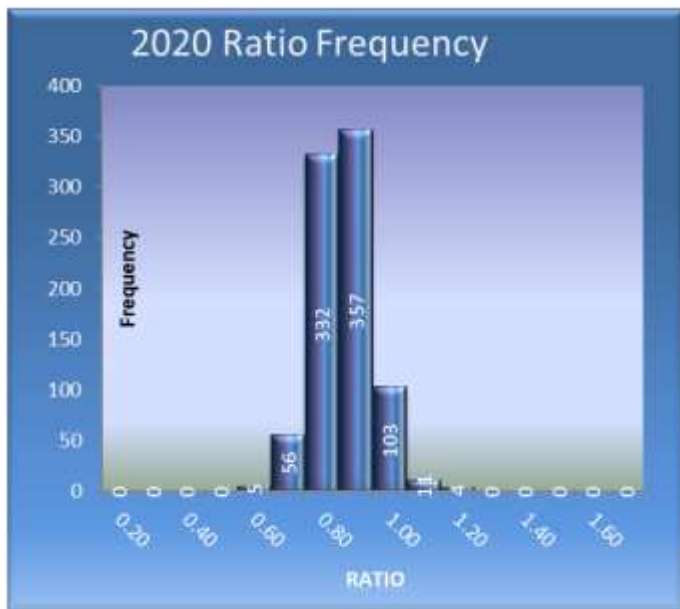
Pre-revalue ratio analysis compares time adjusted sales from 2018 through 2020 in relation to the previous assessed value as of 1/1/2020.

PRE-REVALUE RATIO SAMPLE	
Sample size (n)	868
Mean Assessed Value	\$425,800
Mean Adj. Sales Price	\$526,500
Standard Deviation AV	\$136,785
Standard Deviation SP	\$164,452
ASSESSMENT LEVEL	
Arithmetic Mean Ratio	0.813
Median Ratio	0.808
Weighted Mean Ratio	0.809
UNIFORMITY	
Lowest ratio	0.523
Highest ratio:	1.188
Coefficient of Dispersion	8.03%
Standard Deviation	0.084
Coefficient of Variation	10.30%
Price Related Differential (PRD)	1.005
Price Related Bias (PRB)	-0.005

POST-REVALUE RATIO ANALYSIS

Post revalue ratio analysis compares time adjusted sales from 2018 through 2020 and reflects the assessment level after the property has been revalued to 1/1/2021.

POST REVALUE RATIO SAMPLE STATISTICS	
Sample size (n)	868
Mean Assessed Value	\$484,000
Mean Sales Price	\$526,500
Standard Deviation AV	\$154,486
Standard Deviation SP	\$164,452
ASSESSMENT LEVEL	
Arithmetic Mean Ratio	0.924
Median Ratio	0.919
Weighted Mean Ratio	0.919
UNIFORMITY	
Lowest ratio	0.594
Highest ratio:	1.350
Coefficient of Dispersion	8.01%
Standard Deviation	0.095
Coefficient of Variation	10.29%
Price Related Differential (PRD)	1.005
Price Related Bias (PRB)	-0.008



Areas 025 Annual Update Ratio Study Report

PRE-REVALUE RATIO ANALYSIS

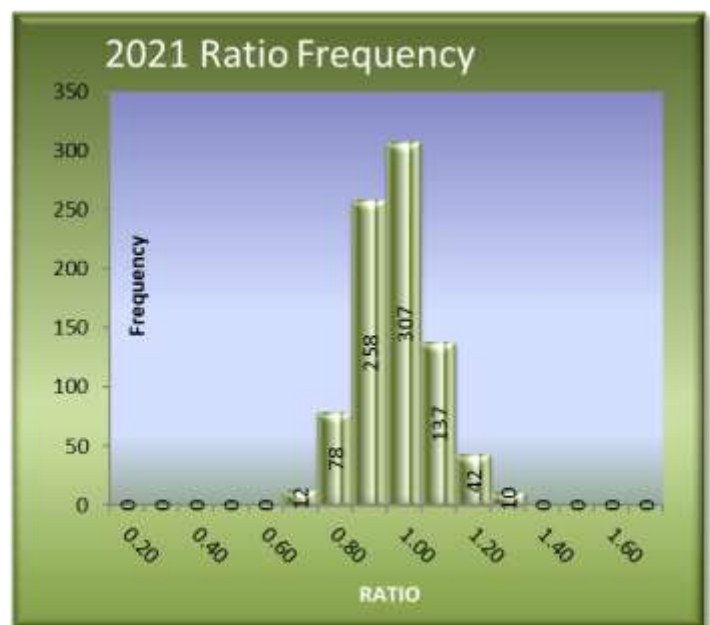
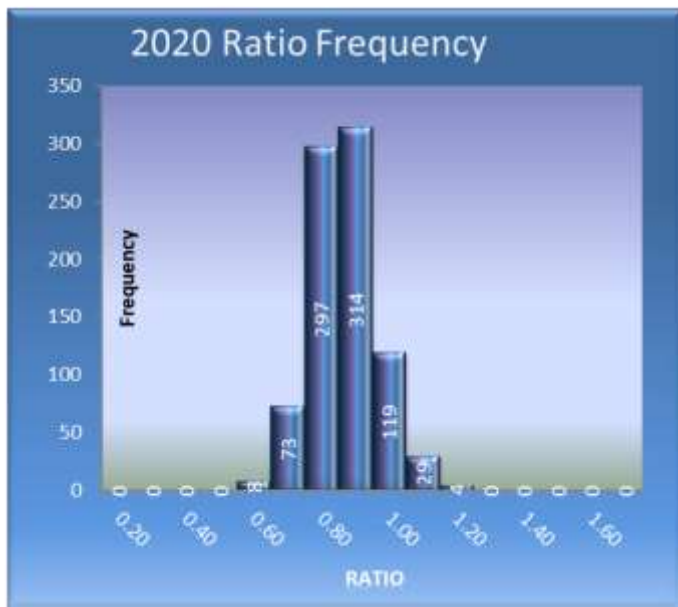
Pre-revalue ratio analysis compares time adjusted sales from 2018 through 2020 in relation to the previous assessed value as of 1/1/2020.

PRE-REVALUE RATIO SAMPLE	
Sample size (n)	844
Mean Assessed Value	\$476,400
Mean Adj. Sales Price	\$585,000
Standard Deviation AV	\$152,711
Standard Deviation SP	\$179,096
ASSESSMENT LEVEL	
Arithmetic Mean Ratio	0.817
Median Ratio	0.811
Weighted Mean Ratio	0.814
UNIFORMITY	
Lowest ratio	0.546
Highest ratio:	1.126
Coefficient of Dispersion	9.17%
Standard Deviation	0.095
Coefficient of Variation	11.62%
Price Related Differential (PRD)	1.003
Price Related Bias (PRB)	0.032

POST-REVALUE RATIO ANALYSIS

Post revalue ratio analysis compares time adjusted sales from 2018 through 2020 and reflects the assessment level after the property has been revalued to 1/1/2021.

POST REVALUE RATIO SAMPLE STATISTICS	
Sample size (n)	844
Mean Assessed Value	\$538,000
Mean Sales Price	\$585,000
Standard Deviation AV	\$168,057
Standard Deviation SP	\$179,096
ASSESSMENT LEVEL	
Arithmetic Mean Ratio	0.924
Median Ratio	0.920
Weighted Mean Ratio	0.920
UNIFORMITY	
Lowest ratio	0.618
Highest ratio:	1.273
Coefficient of Dispersion	8.96%
Standard Deviation	0.106
Coefficient of Variation	11.51%
Price Related Differential (PRD)	1.005
Price Related Bias (PRB)	0.014



Areas 096 Annual Update Ratio Study Report

PRE-REVALUE RATIO ANALYSIS

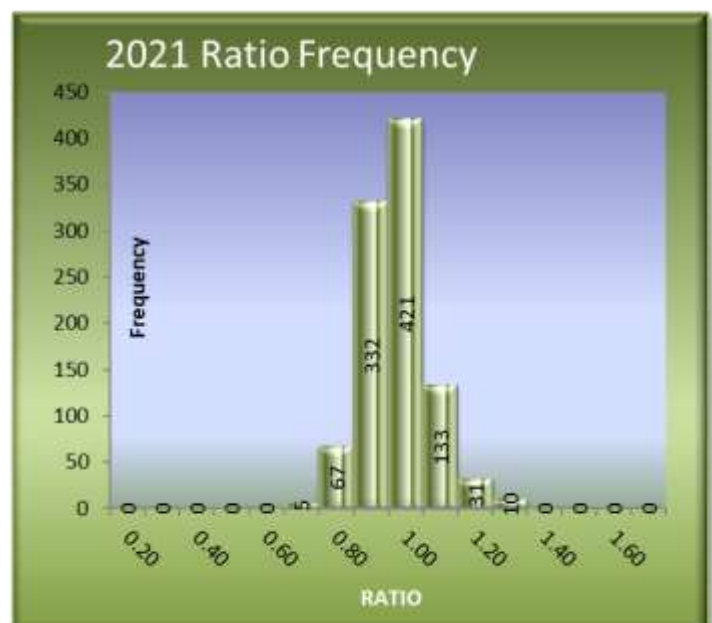
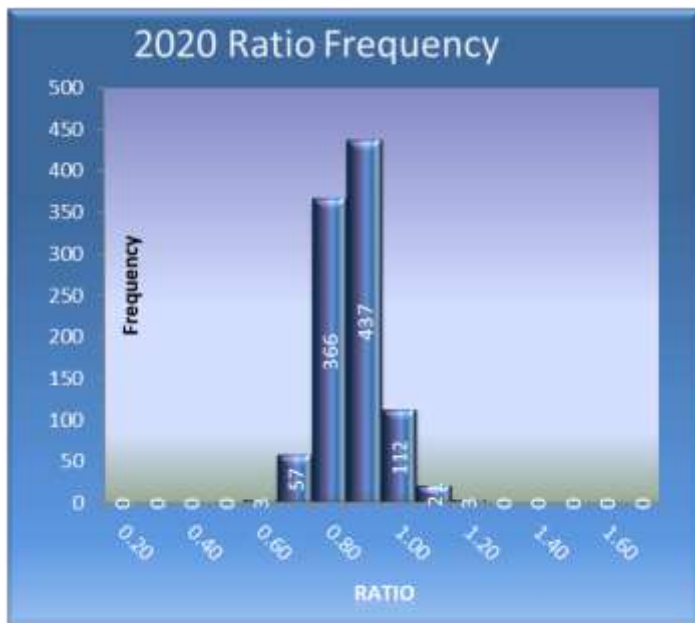
Pre-revalue ratio analysis compares time adjusted sales from 2018 through 2020 in relation to the previous assessed value as of 1/1/2020.

PRE-REVALUE RATIO SAMPLE	
Sample size (n)	999
Mean Assessed Value	\$446,800
Mean Adj. Sales Price	\$549,900
Standard Deviation AV	\$109,845
Standard Deviation SP	\$140,187
ASSESSMENT LEVEL	
Arithmetic Mean Ratio	0.818
Median Ratio	0.813
Weighted Mean Ratio	0.813
UNIFORMITY	
Lowest ratio	0.570
Highest ratio:	1.141
Coefficient of Dispersion	7.60%
Standard Deviation	0.081
Coefficient of Variation	9.90%
Price Related Differential (PRD)	1.007
Price Related Bias (PRB)	-0.038

POST-REVALUE RATIO ANALYSIS

Post revalue ratio analysis compares time adjusted sales from 2018 through 2020 and reflects the assessment level after the property has been revalued to 1/1/2021.

POST REVALUE RATIO SAMPLE STATISTICS	
Sample size (n)	999
Mean Assessed Value	\$504,600
Mean Sales Price	\$549,900
Standard Deviation AV	\$124,209
Standard Deviation SP	\$140,187
ASSESSMENT LEVEL	
Arithmetic Mean Ratio	0.924
Median Ratio	0.917
Weighted Mean Ratio	0.918
UNIFORMITY	
Lowest ratio	0.644
Highest ratio:	1.288
Coefficient of Dispersion	7.51%
Standard Deviation	0.091
Coefficient of Variation	9.85%
Price Related Differential (PRD)	1.007
Price Related Bias (PRB)	-0.037



Model Adjustments 1-3 Unit Residences

$$2021 \text{ Total Value} = 2020 \text{ Total Value} + \text{Overall (+/-) Characteristic Adjustments}$$

Due to truncating the coefficient values used to develop the percentages and further rounding of the percentages in this table, the results you will obtain are an approximation of adjustment achieved in production.

The percentages listed in the following table are total adjustments, not additive adjustments.

Area	Standard Adj %	# Parcels Adjusted	% of Population	Model Variable	Adj %	# of Sales	# of Pop	% Representation
23	+14.05%	6,566	98%	Townhouse Plat	+10.72%	74	114	65%
24	+13.89%	7,102	99%	Ngghb80NonWft	+4.43%	5	11	45%
25	+13.25%	4,278	74%	Neighborhood 40	+10.03%	114	741	15%
				Neighborhood 50	+19.67%	28	197	14%
				Neighborhood 90	+16.40%	77	542	14%
96	+13.10%	6,775	91%	NGHB60	+16.97%	52	465	11%
				NGHb80	+9.62%	74	224	33%

The analysis for these combined areas consisted of a general review of applicable characteristics such as grade, age, condition, stories, living area, views, waterfront, lot size, land problems and neighborhoods. The analysis results showed that several location-based and characteristic-based variables were needed to be included in the valuation formula in order to improve the uniformity of assessments throughout the areas.

There were no properties that would receive a multiple variable adjustment.

Annual Update Process

Effective Date of Appraisal: January 1, 2021

Date of Appraisal Report: February 17, 2021

Sales Screening for Improved Parcel Analysis

In order to ensure that the Assessor's analysis of sales of improved properties best reflects the market value of the majority of the properties within an area, non-typical properties must be removed so a representative sales sample can be analyzed to determine the new valuation level. The following list illustrates examples of non-typical properties which are removed prior to the beginning of the analysis.

1. Vacant parcels
2. Mobile Home parcels
3. Multi-Parcel or Multi Building parcels
4. New construction where less than a 100% complete house was assessed for 2020
5. Existing residences where the data for 2020 is significantly different than the data for 2021 due to remodeling
6. Parcels with improvement values, but no characteristics
7. Parcels with either land or improvement values of \$25,000 or less posted for the 2020 Assessment Roll
8. Short sales, financial institution re-sales and foreclosure sales verified or appearing to be not at market

(Available sales and additional Area information can be viewed from sales lists ([23](#), [24](#), [25](#), [96](#)), [eSales](#) and [Localscape](#))

Land Update

Area	Previous Land Value	Restrictions	Adjustment
23	<=\$10,000		(Previous Land Value * 1)
23	>\$10,000		(Previous Land Value * 1.141)
23	>\$10,000	Restricted Sewer/ Water or Unbuildable	(Previous Land Value * 1)
24	<=\$10,000		(Previous Land Value * 1)
24	>\$10,000		(Previous Land Value * 1.14)
24	>\$10,000	Restricted Sewer/ Water or Unbuildable	(Previous Land Value * 1)
25	<=\$10,000		(Previous Land Value * 1)
25	>\$10,000		(Previous Land Value * 1.133)
25	>\$10,000	Restricted Sewer/ Water or Unbuildable	(Previous Land Value * 1)
96	<=\$10,000		(Previous Land Value * 1)
96	>\$10,000		(Previous Land Value * 1.131)
96	>\$10,000	Restricted Sewer/ Water or Unbuildable	(Previous Land Value * 1)

With results truncated to the next \$1,000.

Parcels with minimal values below the stated thresholds do not typically follow broader market trends.

Improved Parcel Update The analysis for these combined areas consisted of a general review of applicable characteristics such as grade, age, condition, stories, living area, views, waterfront, lot size, land problems and neighborhoods. The analysis results showed that several location-based and characteristic-based variables were needed to be included in the valuation formula in order to improve the uniformity of assessments throughout the areas. The analysis for this area consisted of a general review of applicable characteristics, such as: grade, age, condition, stories, living area, views, waterfront, lot size, land problems and neighborhoods. The analysis results showed that one neighborhood-based variable needed to be included in the valuation formula in order to improve the uniformity of assessments throughout the area.

The derived adjustment formula for Area 23 is:

$$2021 \text{ Total Value} = 2020 \text{ Total Value} * (1 - 0.075) / (0.811024036622876 + 0.0244214400122589 * \text{TownhousePlat})$$

The resulting total value is truncated to the next \$1,000, then:

$$2021 \text{ Improvements Value} = 2021 \text{ Total Value} \text{ minus } 2021 \text{ Land Value}$$

The derived adjustment formula for Area 24 is:

$$2021 \text{ Total Value} = 2020 \text{ Total Value} * (1 - 0.075) / (0.812156247104288 + 0.0736128744957127 * \text{Nghb80NonWft})$$

The resulting total value is truncated to the next \$1,000, then:

$$2021 \text{ Improvements Value} = 2021 \text{ Total Value} \text{ minus } 2021 \text{ Land Value}$$

The derived adjustment formula for Area 25 is:

$$2021 \text{ Total Value} = 2020 \text{ Total Value} * (1 - 0.075) / (0.8167776236752 - 0.0221375659349403 * \text{NGHB90} + 0.023913193737081 * \text{NGHB40} - 0.0438342523894859 * \text{NGHB50})$$

The resulting total value is truncated to the next \$1,000, then:

$$2021 \text{ Improvements Value} = 2021 \text{ Total Value} \text{ minus } 2021 \text{ Land Value}$$

The derived adjustment formula for Area 96 is:

$$2021 \text{ Total Value} = 2020 \text{ Total Value} * (1 - 0.075) / (0.817860975784651 - 0.0270400843423427 * \text{NGHB60} + 0.0259956163369707 * \text{NGHb80})$$

The resulting total value is truncated to the next \$1,000, then:

$$2021 \text{ Improvements Value} = 2021 \text{ Total Value} \text{ minus } 2021 \text{ Land Value}$$

Area	Previous Imp Value	Restrictions	Adjustment
23	<\$1,000		Previous Imp Value * 1
23	>=\$1,000 <=\$10,000		Model Adjustment or Previous Imp Value * 1, whichever is less.
23	>\$10,000		Model Adjustment
23	>\$10,000	Restricted Sewer, Restricted Water, Unbuildable, Poor Condition, or Net Condition	Model Adjustment or Previous Imp Value * 1, whichever is less.
24	<\$1,000		Previous Imp Value * 1
24	>=\$1,000 <=\$10,000		Model Adjustment or Previous Imp Value * 1, whichever is less.
24	>\$10,000		Model Adjustment
24	>\$10,000	Restricted Sewer, Restricted Water, Unbuildable, Poor Condition, or Net Condition	Model Adjustment or Previous Imp Value * 1, whichever is less.

25	<\$1,000		Previous Imp Value * 1
25	>=\$1,000 <=\$10,000		Model Adjustment or Previous Imp Value * 1, whichever is less.
25	>\$10,000		Model Adjustment
25	>\$10,000	Restricted Sewer, Restricted Water, Unbuildable, Poor Condition, or Net Condition	Model Adjustment or Previous Imp Value * 1, whichever is less.
96	<\$1,000		Previous Imp Value * 1
96	>=\$1,000 <=\$10,000		Model Adjustment or Previous Imp Value * 1, whichever is less.
96	>\$10,000		Model Adjustment
96	>\$10,000	Restricted Sewer, Restricted Water, Unbuildable, Poor Condition, or Net Condition	Model Adjustment or Previous Imp Value * 1, whichever is less.

Parcels with minimal values below the stated thresholds do not typically follow broader market trends.

Exception Parcels

The following exception parcels were deemed to not follow broader market trends and were adjusted as follows.

Area	Exception Type	Adjustment
23	Multiple Improvements	Previous Total Value * 1.137
23	House and Mobile Home	Model Adjustment from primary improvement
23	Mobile Home only	Previous Total Value * 1.137
23	Accessory only	Previous Total Value * 1.137
24	Multiple Improvements	Previous Total Value * 1.137
24	House and Mobile Home	Model Adjustment from primary improvement
24	Mobile Home only	Previous Total Value * 1.137
24	Accessory only	Previous Total Value * 1.137
25	Multiple Improvements	Previous Total Value * 1.129
25	House and Mobile Home	Model Adjustment from primary improvement
25	Mobile Home only	Previous Total Value * 1.129
25	Accessory only	Previous Total Value * 1.129
96	Multiple Improvements	Previous Total Value * 1.129
96	House and Mobile Home	Model Adjustment from primary improvement
96	Mobile Home only	Previous Total Value * 1.129
96	Accessory only	Previous Total Value * 1.129

Any properties excluded from the annual update process are noted in RealProperty.

Areas 023, 024, 025 and 096 Market Value Changes Over Time

In a changing market, recognition of a sales trend to adjust a population of sold properties to a common date is required to allow for value differences over time. Market conditions prevalent in the last three years indicated that the best methodology for tracking market movement through time is a modeling technique using splines. Put simply, this is a way of drawing best fit lines through the data points in situations where there may be several different trends going on at different times. Splines are the use of two or more straight lines to approximate trends and directions in the market. Splines are best suited to react to the sudden market changes. To create larger and more reliable data sets for time trending, it was necessary in most instances to combine geographic areas that were performing similarly in the marketplace. The following chart shows the % time adjustment required for sales to reflect the indicated market value as of the assessment date, **January 1, 2021**.

The time adjustment formula for Areas 023, 024, 025 and 096 is:

$$\begin{aligned} & (0.834751191302617 + 0.0000744197354716843 * ((\text{SaleDate} \leq 43466) * \text{SaleDate} + (\text{SaleDate} > 43466) * 43466 - \\ & 44197) - 0.000121294116768835 * ((\text{SaleDate} \geq 43466) * (\text{SaleDate} \leq 43845) * \text{SaleDate} + (\text{SaleDate} < 43466) * 43466 \\ & + (\text{SaleDate} > 43845) * 43845 - 44197) - 0.000262359275850974 * ((\text{SaleDate} \geq 43845) * \text{SaleDate} + (\text{SaleDate} < 43845) \\ & * 43845 - 44197)) / (0.834751191302617 + 0.0000744197354716843 * (-731) - 0.000121294116768835 * (-352)) \end{aligned}$$

For example, a sale of \$650,000 which occurred on October 1, 2019 would be adjusted by the time trend factor of 1.128, resulting in an adjusted value of \$733,000 (\$650,000 * 1.128 = \$733,200) – truncated to the nearest \$1000.

Areas 023, 024, 025 and 096

Market Value Changes Over Time...continued

Sale Date	Adjustment (Factor)	Equivalent Percent
1/1/2018	1.135	13.5%
2/1/2018	1.138	13.8%
3/1/2018	1.140	14.0%
4/1/2018	1.143	14.3%
5/1/2018	1.146	14.6%
6/1/2018	1.149	14.9%
7/1/2018	1.151	15.1%
8/1/2018	1.154	15.4%
9/1/2018	1.157	15.7%
10/1/2018	1.160	16.0%
11/1/2018	1.163	16.3%
12/1/2018	1.165	16.5%
1/1/2019	1.168	16.8%
2/1/2019	1.163	16.3%
3/1/2019	1.159	15.9%
4/1/2019	1.155	15.5%
5/1/2019	1.150	15.0%
6/1/2019	1.146	14.6%
7/1/2019	1.141	14.1%
8/1/2019	1.137	13.7%
9/1/2019	1.132	13.2%
10/1/2019	1.128	12.8%
11/1/2019	1.123	12.3%
12/1/2019	1.119	11.9%
1/1/2020	1.114	11.4%
2/1/2020	1.107	10.7%
3/1/2020	1.098	9.8%
4/1/2020	1.088	8.8%
5/1/2020	1.078	7.8%
6/1/2020	1.068	6.8%
7/1/2020	1.059	5.9%
8/1/2020	1.049	4.9%
9/1/2020	1.039	3.9%
10/1/2020	1.029	2.9%
11/1/2020	1.019	1.9%
12/1/2020	1.010	1.0%
1/1/2021	1.000	0.0%

Uniform Standards of Professional Appraisal Practice Compliance

Client and Intended Use of the Appraisal:

This mass appraisal report is intended for use by the public, King County Assessor and other agencies or departments administering or confirming ad valorem property taxes. Use of this report by others for other purposes is not intended by the appraiser. The use of this appraisal, analyses and conclusions is limited to the administration of ad valorem property taxes in accordance with Washington State law. As such it is written in concise form to minimize paperwork. The assessor intends that this report conform to the Uniform Standards of Professional Appraisal Practice (USPAP) requirements for a mass appraisal report as stated in USPAP Standard 6. To fully understand this report the reader may need to refer to the Assessor's Property Record Files, Assessors Real Property Data Base, separate studies, Assessor's Procedures, Assessor's field maps, Revalue Plan and the statutes.

The purpose of this report is to explain and document the methods, data and analysis used in the revaluation of King County. King County is on a six-year physical inspection cycle with annual statistical updates. The revaluation plan is approved by Washington State Department of Revenue. The Revaluation Plan is subject to their periodic review.

Definition and date of value estimate:

Market Value

The basis of all assessments is the true and fair value of property. True and fair value means market value (Spokane etc. R. Company v. Spokane County, 75 Wash. 72 (1913); Mason County Overtaxed, Inc. v. Mason County, 62 Wn. 2d (1963); AGO 57-58, No. 2, 1/8/57; AGO 65-66, No. 65, 12/31/65).

The true and fair value of a property in money for property tax valuation purposes is its "market value" or amount of money a buyer willing but not obligated to buy would pay for it to a seller willing but not obligated to sell. In arriving at a determination of such value, the assessing officer can consider only those factors which can within reason be said to affect the price in negotiations between a willing purchaser and a willing seller, and he must consider all of such factors. (AGO 65,66, No. 65, 12/31/65)

Retrospective market values are reported herein because the date of the report is subsequent to the effective date of valuation. The analysis reflects market conditions that existed on the effective date of appraisal.

Highest and Best Use

RCW 84.40.030

All property shall be valued at one hundred percent of its true and fair value in money and assessed on the same basis unless specifically provided otherwise by law.

An assessment may not be determined by a method that assumes a land usage or highest and best use not permitted, for that property being appraised, under existing zoning or land use planning ordinances or statutes or other government restrictions.

WAC 458-07-030 (3) True and fair value -- Highest and best use.

Unless specifically provided otherwise by statute, all property shall be valued on the basis of its highest and best use for assessment purposes. Highest and best use is the most profitable, likely use to which a property can be put. It is the use which will yield the highest return on the owner's investment. Any reasonable use to which the property may be put may be taken into consideration and if it is peculiarly adapted to some particular use, that fact may be taken into consideration. Uses that are within the realm of possibility, but not reasonably probable of occurrence, shall not be considered in valuing property at its highest and best use.

If a property is particularly adapted to some particular use this fact may be taken into consideration in estimating the highest and best use. (Samish Gun Club v. Skagit County, 118 Wash. 578 (1922))

The present use of the property may constitute its highest and best use. The appraiser shall, however, consider the uses to which similar property similarly located is being put. (Finch v. Grays Harbor County, 121 Wash. 486 (1922))

The fact that the owner of the property chooses to use it for less productive purposes than similar land is being used shall be ignored in the highest and best use estimate. (Samish Gun Club v. Skagit County, 118 Wash. 578 (1922))

Where land has been classified or zoned as to its use, the county assessor may consider this fact, but he shall not be bound to such zoning in exercising his judgment as to the highest and best use of the property. (AGO 63-64, No. 107, 6/6/64)

Date of Value Estimate

RCW 84.36.005

All property now existing, or that is hereafter created or brought into this state, shall be subject to assessment and taxation for state, county, and other taxing district purposes, upon equalized valuations thereof, fixed with reference thereto on the first day of January at twelve o'clock meridian in each year, excepting such as is exempted from taxation by law.

RCW 36.21.080

The county assessor is authorized to place any property that is increased in value due to construction or alteration for which a building permit was issued, or should have been issued, under chapter 19.27, 19.27A, or 19.28 RCW or other laws providing for building permits on the assessment rolls for the purposes of tax levy up to August 31st of each year. The assessed valuation of the property shall be considered as of July 31st of that year.

Reference should be made to the property card or computer file as to when each property was valued. Sales consummating before and after the appraisal date may be used and are analyzed as to their indication of value at the date of valuation. If market conditions have changed then the appraisal will state a logical cutoff date after which no market date is used as an indicator of value.

Property Rights Appraised: Fee Simple

Wash Constitution Article 7 § 1 Taxation:

All taxes shall be uniform upon the same class of property within the territorial limits of the authority levying the tax and shall be levied and collected for public purposes only. The word "property" as used herein shall mean and include everything, whether tangible or intangible, subject to ownership. All real estate shall constitute one class.

Trimble v. Seattle, 231 U.S. 683, 689, 58 L. Ed. 435, 34 S. Ct. 218 (1914)

...the entire [fee] estate is to be assessed and taxed as a unit...

Folsom v. Spokane County, 111 Wn. 2d 256 (1988)

...the ultimate appraisal should endeavor to arrive at the fair market value of the property as if it were an unencumbered fee...

The Dictionary of Real Estate Appraisal, 3rd Addition, Appraisal Institute.

Absolute ownership unencumbered by any other interest or estate, subject only to the limitations imposed by the governmental powers of taxation, eminent domain, police power, and escheat.

Assumptions and Limiting Conditions:

1. No opinion as to title is rendered. Data on ownership and legal description were obtained from public records. Title is assumed to be marketable and free and clear of all liens and encumbrances, easements and restrictions unless shown on maps or property record files. The property is appraised assuming it to be under responsible ownership and competent management and available for its highest and best use.
2. No engineering survey has been made by the appraiser. Except as specifically stated, data relative to size and area were taken from sources considered reliable, and no encroachment of real property improvements is assumed to exist.
3. No responsibility for hidden defects or conformity to specific governmental requirements, such as fire, building and safety, earthquake, or occupancy codes, can be assumed without provision of specific professional or governmental inspections.
4. Rental areas herein discussed have been calculated in accord with generally accepted industry standards.
5. The projections included in this report are utilized to assist in the valuation process and are based on current market conditions and anticipated short term supply demand factors. Therefore, the projections are subject to changes in future conditions that cannot be accurately predicted by the appraiser and could affect the future income or value projections.
6. The property is assumed uncontaminated unless the owner comes forward to the Assessor and provides other information.
7. The appraiser is not qualified to detect the existence of potentially hazardous material which may or may not be present on or near the property. The existence of such substances may have an effect on the value of the property. No consideration has been given in this analysis to any potential diminution in value should such hazardous materials be found (unless specifically noted). We urge the taxpayer to retain an expert in the field and submit data affecting value to the assessor.
8. No opinion is intended to be expressed for legal matters or that would require specialized investigation or knowledge beyond that ordinarily employed by real estate appraisers, although such matters may be discussed in the report.

9. Maps, plats and exhibits included herein are for illustration only, as an aid in visualizing matters discussed within the report. They should not be considered as surveys or relied upon for any other purpose.
10. The appraisal is the valuation of the fee simple interest. Unless shown on the Assessor's parcel maps, easements adversely affecting property value were not considered.
11. An attempt to segregate personal property from the real estate in this appraisal has been made.
12. Items which are considered to be "typical finish" and generally included in a real property transfer, but are legally considered leasehold improvements are included in the valuation unless otherwise noted.
13. The movable equipment and/or fixtures have not been appraised as part of the real estate. The identifiable permanently fixed equipment has been appraised in accordance with RCW 84.04.090 and WAC 458-12-010.
14. I have considered the effect of value of those anticipated public and private improvements of which I have common knowledge. I can make no special effort to contact the various jurisdictions to determine the extent of their public improvements.
15. Exterior inspections were made of all properties in the physical inspection areas (outlined in the body of the report) however; due to lack of access and time few received interior inspections.

Scope of Work Performed:

Research and analyses performed are identified in the body of the revaluation report. The assessor has no access to title reports and other documents. Because of legal limitations we did not research such items as easements, restrictions, encumbrances, leases, reservations, covenants, contracts, declarations and special assessments. Disclosure of interior home features and, actual income and expenses by property owners is not a requirement by law therefore attempts to obtain and analyze this information are not always successful. The mass appraisal performed must be completed in the time limits indicated in the Revaluation Plan and as budgeted. The scope of work performed and disclosure of research and analyses not performed are identified throughout the body of the report.

Certification:

I certify that, to the best of my knowledge and belief:

- The statements of fact contained in this report are true and correct
- The report analyses, opinions, and conclusions are limited only by the reported assumptions and limiting conditions and are my personal, impartial, and unbiased professional analyses, opinions, and conclusions.
- I have no present or prospective interest in the property that is the subject of this report and no personal interest with respect to the parties involved.
- I have no bias with respect to the property that is the subject of this report or to the parties involved.
- My engagement in this assignment was not contingent upon developing or reporting predetermined results.
- My compensation for completing this assignment is not contingent upon the development or reporting of predetermined value or direction in value that favors the cause of the client, the amount of the value opinion, the attainment of a stipulated result, or the occurrence of a subsequent event directly related to the intended use of this appraisal.
- My analyses, opinions, and conclusions were developed, and this report has been prepared, in conformity with the Uniform Standards of Professional Appraisal Practice.
- The area(s) physically inspected for purposes of this revaluation are outlined in the body of this report.
- The individuals listed below were part of the "appraisal team" and provided significant real property appraisal assistance to the person signing this certification. Any services regarding the subject area performed by the appraiser within the prior three years, as an appraiser or in any other capacity is listed adjacent their name.

None

Any services regarding the subject area performed by me within the prior three years, as an appraiser or in any other capacity is listed below:

To the best of my knowledge the following services were performed by me within the subject area in the last three years:

- Annual Update Model Development and Report Preparation
- Data Collection
- Sales Verification
- Appeals Response Preparation / Review
- Appeal Hearing Attendance
- Physical Inspection Model Development and Report Preparation
- Land and total Valuation
- New Construction Evaluation



3/9/2021

Appraiser II

Date



King County

Department of Assessments

King County Administration Bldg.
500 Fourth Avenue, ADM-AS-0708
Seattle, WA 98104-2384
(206) 296-7300 FAX (206) 296-0595
Email: assessor.info@kingcounty.gov

John Wilson

Assessor

As we start preparations for the 2021 property assessments, it is helpful to remember that the mission and work of the Assessor's Office sets the foundation for efficient and effective government and is vital to ensure adequate funding for services in our communities. Maintaining the public's confidence in our property tax system requires that we build on a track record of fairness, equity, and uniformity in property assessments. Though we face ongoing economic challenges, I challenge each of us to seek out strategies for continuous improvement in our business processes.

Please follow these standards as you perform your tasks.

- Use all appropriate mass appraisal techniques as stated in Washington State Laws, Washington State Administrative Codes, Uniform Standards of Professional Appraisal Practice (USPAP), and accepted International Association of Assessing Officers (IAAO) standards and practices.
- Work with your supervisor on the development of the annual valuation plan and develop the scope of work for your portion of appraisal work assigned, including physical inspections and statistical updates of properties;
- Where applicable, validate correctness of physical characteristics and sales of all vacant and improved properties.
- Appraise land as if vacant and available for development to its highest and best use. The improvements are to be valued at their contribution to the total in compliance with applicable laws, codes and DOR guidelines. The Jurisdictional Exception is applied in cases where Federal, State or local laws or regulations preclude compliance with USPAP;
- Develop and validate valuation models as delineated by IAAO standards: Standard on Mass Appraisal of Real Property and Standard on Ratio Studies. Apply models uniformly to sold and unsold properties, so that ratio statistics can be accurately inferred to the entire population.
- Time adjust sales to January 1, 2021 in conformance with generally accepted appraisal practices.
- Prepare written reports in compliance with USPAP Standard 6 for Mass Appraisals. The intended users of your appraisals and the written reports include the public, Assessor, the Boards of Equalization and Tax Appeals, and potentially other governmental jurisdictions. The intended use of the appraisals and the written reports is the administration of ad valorem property taxation.

Thank you for your continued hard work on behalf of our office and the taxpayers of King County. Your dedication to accurate and fair assessments is why our office is one of the best in the nation.

John Wilson
King County Assessor

