

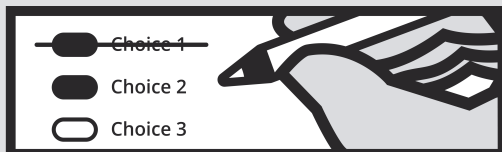
Instructions

How to vote



Completely fill in the oval next to your choice.

How to correct a mistake



To make a correction, draw a line through the entire choice. You then have the option of making a different choice by completely filling in another oval.

Begin voting here



County

King County Proposition No. 1 Crisis Care Centers Levy

The King County Council passed Ordinance 19572 concerning funding for mental health and substance use disorder services.

If approved, this proposition would fund behavioral health services and capital facilities, including a countywide crisis care centers network, increased residential treatment; mobile crisis care; post-discharge stabilization; and workforce supports. It would authorize an additional nine-year property tax levy for collection beginning in 2024 at \$0.145 per \$1,000 of assessed valuation, with the 2024 levy amount being the base for calculating annual increases in 2025-2032 under chapter 84.55 RCW, and exempt eligible seniors, veterans, and disabled persons under RCW 84.36.381. Should this proposition be:

- Approved
- Rejected

School

Kent School District No. 415 Proposition No. 1 General Obligation Bonds - \$495,000,000

The Board of Directors of Kent School District No. 415 approved Resolution No. 1634 concerning this proposition for bonds. This proposition would authorize the District to make District-wide safety, security and ADA improvements; modernize elementary schools for pre-K education; repair, remodel and upgrade school and administrative buildings, HVAC and building systems and technology; replace and install playgrounds, athletic facilities and sports fields; and expand operations facilities, by issuing \$495,000,000 of general obligation bonds maturing within 21 years; and to levy excess property taxes annually to repay the bonds, as described in Resolution No. 1634.

Should this proposition be approved?

- Yes
- No

End of Ballot

Sample