

# Influenza Update: October 13, 2018

During the week ending October 13, 2018:

- There were no new influenza-related deaths or outbreaks reported this week. One outbreak in a longterm care facility and no deaths have been reported so far this season.
- The percent of ED ILI visits was below the 5-year average for this time of year, and below peak levels observed during the previous 5 influenza seasons. The magnitude of ED ILI visits relative to the total number of ED visits was highest among the pediatric population. Among every age group, the percent of ED ILI visits was below baseline levels and comparable to trends observed at this time of the year during the previous five influenza seasons.

## At a glance

	<u>Week Ending</u> <u>10/13/2018</u>	<u>Since 09/23/2018</u>	<u>5-Year Average to</u> <u>date</u>
Laboratory-confirmed influenza deaths	0	0	0.2
Respiratory disease outbreaks at long-term care facilities (LTCFs)	0	1	1
Percentage positive influenza tests by PCR <sup>1</sup>	1.7%	Season Peak	2.0%
Number of labs reporting	5	Weekly Average	5
Number of specimens tested	523	Weekly Average	477
Percentage of emergency department (ED) visits for ILI <sup>2</sup>	0.94%	Season Peak	0.94%

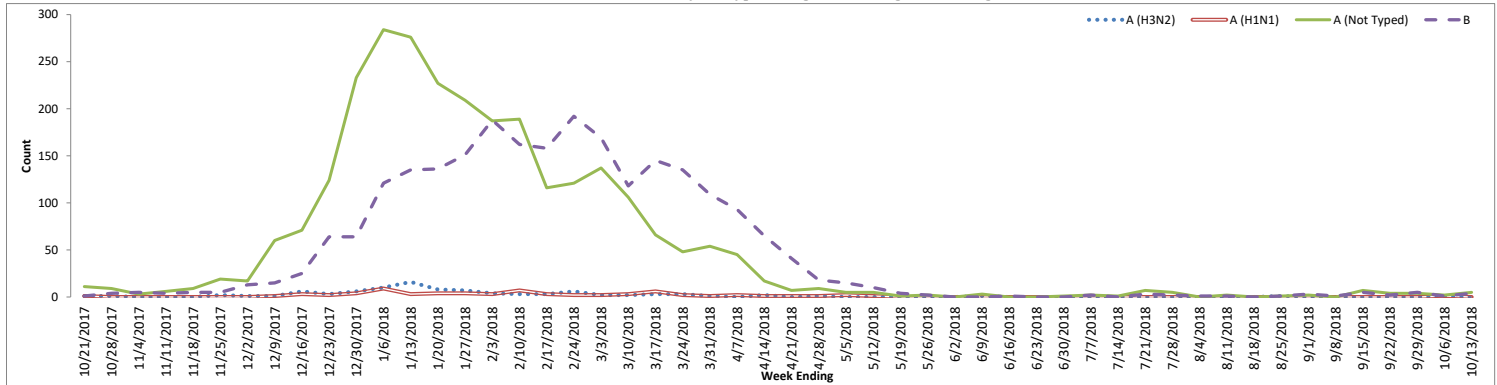
<sup>1</sup>Based on King County hospital laboratory and sentinel provider submissions to CDC's National Respiratory and Enteric Virus Surveillance System (NREVSS). NREVSS data not available for previous seasons due to change in reporting procedures.

<sup>2</sup>Based on Public Health - Seattle & King County's syndromic surveillance data representing aggregate percent of visits to King County EDs.

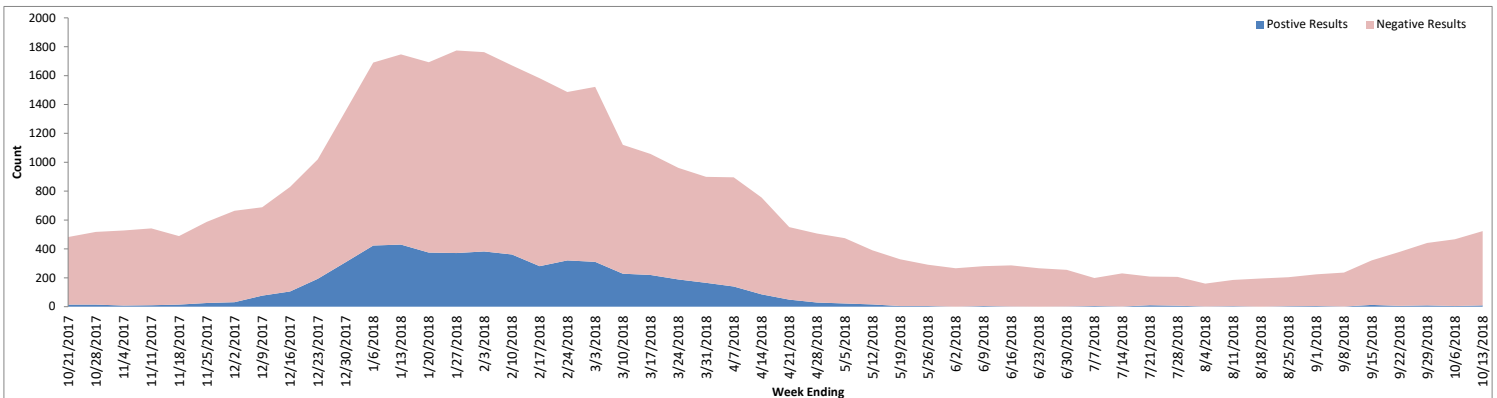
## Submissions to NREVSS by King County labs and sentinel providers, PCR Testing Only

Week #	Week ending	# Labs reporting	A (H1N1)	A (H3N2)	A (Not typed)	B	# Tested	% Flu positive
39	9/29/2018	6	0	0	4	5	441	2%
40	10/6/2018	5	1	0	2	1	467	0.9%
41	10/13/2018	5	0	0	5	4	523	1.7%

Positive Influenza Results by Subtype, Using PCR Testing Methodologies



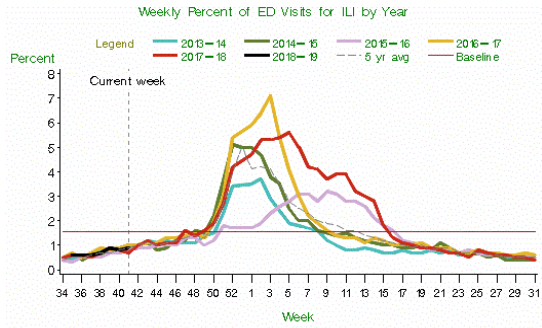
Positive and Negative Influenza Results, Using PCR Testing Methodologies



# Public Health - Seattle & King County

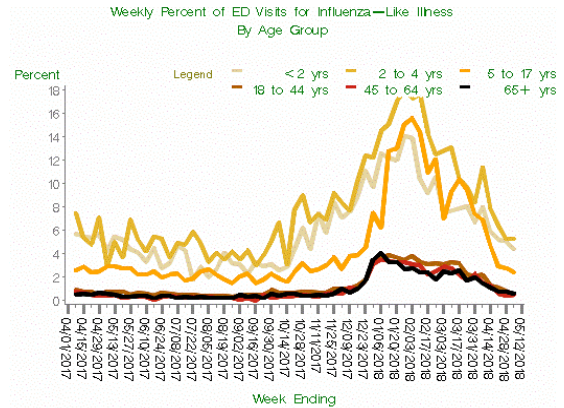
## Summary of Influenza Syndromic and Laboratory Surveillance

### King County Syndromic Surveillance



All ages

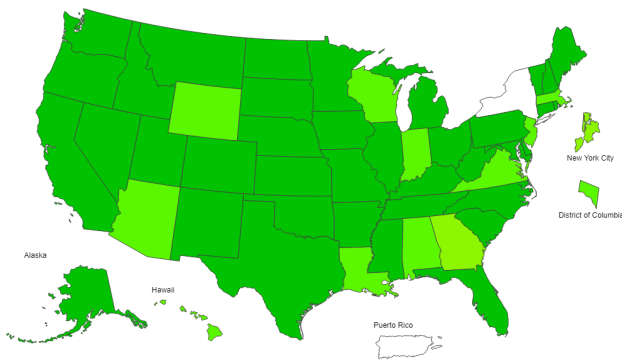
Note: The change from ICD-9 to ICD-10 codes in October 2015 may impact trends.  
 Last updated Oct 14, 2018 ; 'current week' is week ending Oct 13, 2018  
 Baseline: Mean % ILI during non-flu weeks for previous three seasons, adding two standard deviations.  
 Using rapid antigen data, a non-flu week is a period of 2+ consecutive weeks where each one accounted for < 2% of the season's total number of specimens that tested positive for influenza.



ALLHOSPITALS, Last Updated May 7, 2018

### National Data from CDC

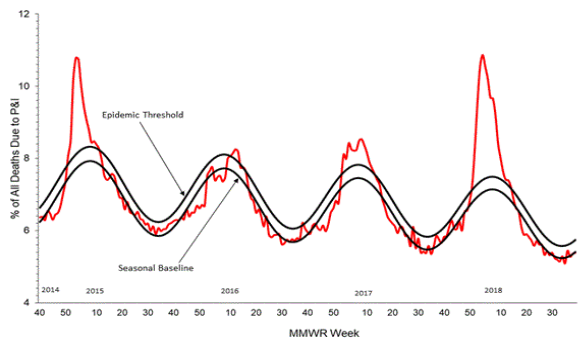
2018-19 Influenza Season Week 40 ending Oct 06, 2018



ILI Activity Level



Pneumonia and Influenza Mortality from the National Center for Health Statistics Mortality Surveillance System  
 Data through the week ending September 29, 2018, as of October 11, 2018



#### Please report any of the following:

- Laboratory-Confirmed influenza-associated deaths
- Patients with novel or unsubtypeable influenza viruses
- Outbreaks of influenza-like illness in a long-term care facility

#### Reporting Timeframe

- Within 3 business days
- Immediately
- Immediately

#### Contact Information

- Phone: (206) 296-4774
- Fax: (206) 296-4803



#### Additional Resources:

- [Additional King County Flu Information, Resources, and Surveillance](#)
- [UW Virology Laboratory Respiratory Virus Surveillance](#)
- [Washington State Influenza Surveillance Update](#)

- [National Influenza Update](#)
- [Global Influenza Update](#)

**Public Health - Seattle & King County**

**Summary of Influenza Deaths and Long-Term Care Facility (LTCF) Influenza Outbreaks**

Updated Friday, October 19, 2018

Current Week #: 42

Last Week #: 41

	2018-2019		2017-2018		2016-2017		2015-2016		2014-2015		2013-2014		5-year avg	
<b>New Investigations Week 42</b>														
Influenza Deaths	0		0		0		0		0		0			
LTCF Outbreaks	0		0		2		0		0		0			
<b>Confirmed Cases as of 10/13/18</b>														
Influenza Deaths Week 41	0		0		1		0		0		0		0.2	
Influenza Deaths Season-to-date	0		0		1		0		0		0		0.2	
LTCF Outbreaks Week 41	0		0		2		1		0		0		0.6	
LTCF Outbreaks Season-to-date	1		0		4		1		0		0		1.0	
	2018-2019		2017-2018		2016-2017		2015-2016		2014-2015		2013-2014		5-year avg	
<b>Total Seasonal LTCF Outbreaks</b>	1		67		92		18		65		15		51.4	
<u>Flu type:</u>														
A	0	0%	15	22%	62	67%	7	39%	49	75%	9	60%	28.4	55%
B	0	0%	6	9%	3	3%	7	39%	4	6%	1	7%	4.2	8%
A and B	0	0%	5	7%	4	4%	0	0%	2	3%	2	13%	2.6	5%
Info not available	1	100%	41	61%	23	25%	4	22%	10	15%	3	20%	16.2	32%
	2018-2019		2017-2018		2016-2017		2015-2016		2014-2015		2013-2014		5-year avg	
<b>Total Seasonal Influenza Deaths</b>	0		50		84		16		43		22		43	
<u>Flu type:</u>														
A	0		33	66%	74	88%	10	63%	40	93%	20	91%	35.4	82%
H1N1	0		1	2%	0	0%	6	38%	0	0%	7	32%	2.8	7%
H3	0		6	12%	18	21%	1	6%	7	16%	0	0%	6.4	15%
A (not typed)	0		26	52%	56	67%	3	19%	33	77%	13	59%	26.2	61%
B	0		11	22%	7	8%	6	38%	3	7%	2	9%	5.8	13%
Not typed	0		6	12%	1	1%	0	0%	0	0%	0	0%	1.4	3%
<u>Sex:</u>														
Male	0		17	34%	41	49%	7	44%	17	40%	11	50%	18.6	43%
Female	0		33	66%	43	51%	9	56%	26	60%	11	50%	24.4	57%
<u>Age:</u>														
Under 5 years	0		0	0%	0	0%	0	0%	0	0%	0	0%	0	0%
5 - 17	0		0	0%	0	0%	0	0%	0	0%	0	0%	0	0%
18 - 44	0		0	0%	1	1%	3	19%	1	2%	2	9%	1.4	3%
45 - 64	0		7	14%	5	6%	5	31%	6	14%	5	23%	5.6	13%
65+ years	0		43	86%	78	93%	8	50%	36	84%	15	68%	36	84%
Average			81.1		81.9		64.9		81.7		71.5		76.2	
<u>Race:</u>														
White	0		32	64%	54	64%	12	75%	35	81%	16	73%	29.8	69%
Asian	0		2	4%	13	15%	2	13%	1	2%	3	14%	4.2	10%
Black	0		3	6%	4	5%	2	13%	5	12%	1	5%	3	7%
Amer Indian	0		0	0%	0	0%	0	0%	0	0%	1	5%	0.2	0%
Hispanic/Latino	0		2	4%	3	4%	0	0%	1	2%	0	0%	1.2	3%
Other	0		1	2%	1	1%	0	0%	1	2%	1	5%	0.8	2%
Unknown	0		10	20%	9	11%	0	0%	0	0%	0	0%	3.8	9%
<u>Flu vaccine status</u>														
Up to date	0		26	52%	39	46%	6	38%	21	49%	8	36%	20	47%
Not up to date	0		10	20%	20	24%	8	50%	5	12%	6	27%	9.8	23%
Unk/NA	0		14	28%	25	30%	2	13%	17	40%	8	36%	13.2	31%