

# Influenza Update: October 20, 2018

During the week ending October 20, 2018:

- There were no new influenza-related deaths or outbreaks reported this week. One outbreak in a longterm care facility and no deaths have been reported so far this season.
- The percent of ED ILI visits was below the 5-year average for this time of year, and below peak levels observed during the previous 5 influenza seasons. The magnitude of ED ILI visits relative to the total number of ED visits was highest among the pediatric population. Among every age group, the percent of ED ILI visits was below baseline levels and comparable to trends observed at this time of the year during the previous five influenza seasons.

## At a glance

	<u>Week Ending</u> <u>10/20/2018</u>	<u>Since 09/23/2018</u>	<u>5-Year Average to</u> <u>date</u>
Laboratory-confirmed influenza deaths	0	0	0.2
Respiratory disease outbreaks at long-term care facilities (LTCFs)	0	1	1
Percentage positive influenza tests by PCR <sup>1</sup>	1%	Season Peak	2.0%
Number of labs reporting	6	Weekly Average	6
Number of specimens tested	579	Weekly Average	534
Percentage of emergency department (ED) visits for ILI <sup>2</sup>	0.82%	Season Peak	0.97%

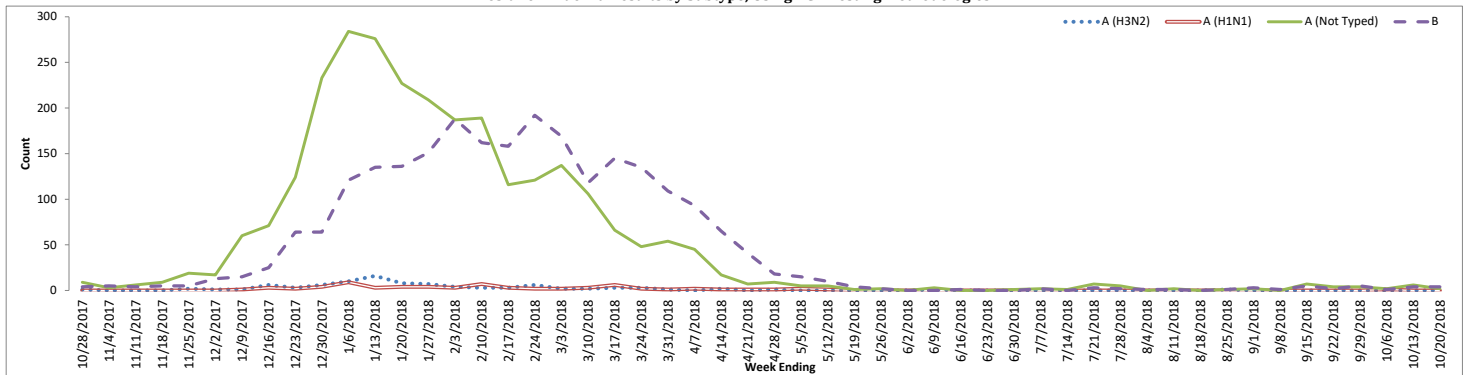
<sup>1</sup>Based on King County hospital laboratory and sentinel provider submissions to CDC's National Respiratory and Enteric Virus Surveillance System (NREVSS). NREVSS data not available for previous seasons due to change in reporting procedures.

<sup>2</sup>Based on Public Health - Seattle & King County's syndromic surveillance data representing aggregate percent of visits to King County EDs.

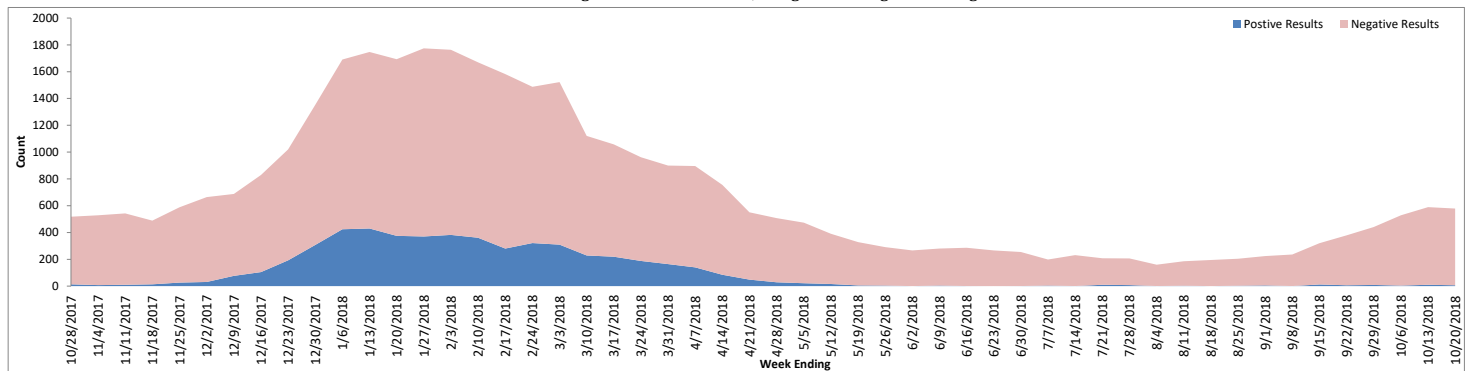
## Submissions to NREVSS by King County labs and sentinel providers, PCR Testing Only

Week #	Week ending	# Labs reporting	A (H1N1)	A (H3N2)	A (Not typed)	B	# Tested	% Flu positive
39	9/29/2018	6	0	0	4	5	441	2%
40	10/6/2018	6	1	0	2	1	528	0.8%
41	10/13/2018	6	0	0	6	4	589	1.7%
42	10/20/2018	6	0	0	2	4	579	1%

Positive Influenza Results by Subtype, Using PCR Testing Methodologies



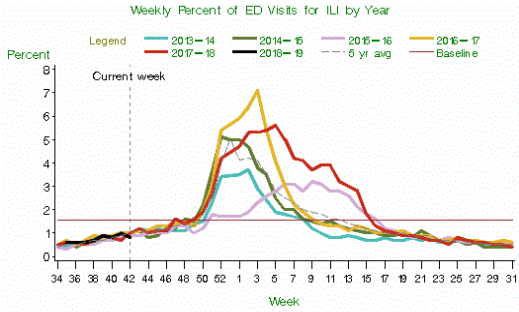
Positive and Negative Influenza Results, Using PCR Testing Methodologies



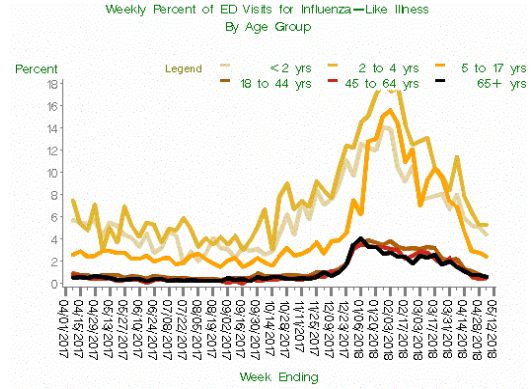
# Public Health - Seattle & King County

## Summary of Influenza Syndromic and Laboratory Surveillance

### King County Syndromic Surveillance



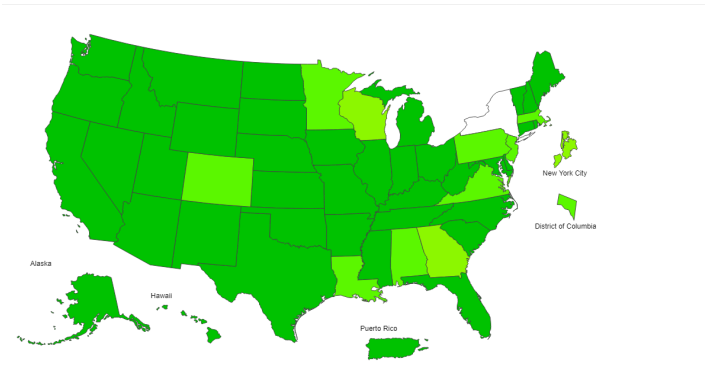
Note: The change from ICD-9 to ICD-10 codes in October 2015 may impact trends.  
 Last updated Oct 24, 2018 ; 'current week' is week ending Oct 20, 2018  
 Baseline: Mean % ILI during non-flu weeks for previous three seasons, adding two standard deviations.  
 Using rapid antigen data, a non-flu week is a period of 2+ consecutive weeks where each one accounted for <2% of the season's total number of specimens that tested positive for influenza.



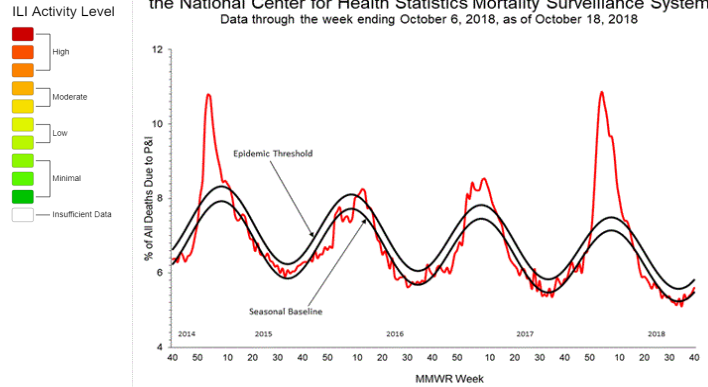
ALLHOSPITALS, Last Updated May 7, 2018

### National Data from CDC

2018-19 Influenza Season Week 41 ending Oct 13, 2018



Pneumonia and Influenza Mortality from the National Center for Health Statistics Mortality Surveillance System  
 Data through the week ending October 6, 2018, as of October 18, 2018



#### Please report any of the following:

- Laboratory-Confirmed influenza-associated deaths
- Patients with novel or unsubtypable influenza viruses
- Outbreaks of influenza-like illness in a long-term care facility

#### Reporting Timeframe

- Within 3 business days
- Immediately
- Immediately

#### Contact Information

- Phone: (206) 296-4774
- Fax: (206) 296-4803



#### Additional Resources:

- [Additional King County Flu Information, Resources, and Surveillance](#)
- [UW Virology Laboratory Respiratory Virus Surveillance](#)
- [Washington State Influenza Surveillance Update](#)

- [National Influenza Update](#)
- [Global Influenza Update](#)

Reported Updated

10/24/2018

Public Health - Seattle & King County

Summary of Influenza Deaths and Long-Term Care Facility (LTCF) Influenza Outbreaks

Updated Wednesday, October 24, 2018															
Current Week #: 43						Last Week #: 42									
		2018-2019		2017-2018		2016-2017		2015-2016		2014-2015		2013-2014		5-year avg	
<b>New Investigations Week 43</b>															
Influenza Deaths		0		0		0		0		0		0			
LTCF Outbreaks		0		0		1		0		0		1			
<b>Confirmed Cases as of 10/20/18</b>															
Influenza Deaths Week 42		0		0		0		0		0		0		0.0	
Influenza Deaths Season-to-date		0		0		1		0		0		0		0.2	
LTCF Outbreaks Week 42		0		0		2		0		0		0		0.4	
LTCF Outbreaks Season-to-date		1		0		6		1		0		0		1.4	
		2018-2019		2017-2018		2016-2017		2015-2016		2014-2015		2013-2014		5-year avg	
<b>Total Seasonal LTCF Outbreaks</b>		<b>1</b>		<b>67</b>		<b>92</b>		<b>18</b>		<b>65</b>		<b>15</b>		<b>51.4</b>	
<u>Flu type:</u>															
A		0 0%		15 22%		62 67%		7 39%		49 75%		9 60%		28.4 55%	
B		0 0%		6 9%		3 3%		7 39%		4 6%		1 7%		4.2 8%	
A and B		0 0%		5 7%		4 4%		0 0%		2 3%		2 13%		2.6 5%	
Info not available		1 100%		41 61%		23 25%		4 22%		10 15%		3 20%		16.2 32%	
		2018-2019		2017-2018		2016-2017		2015-2016		2014-2015		2013-2014		5-year avg	
<b>Total Seasonal Influenza Deaths</b>		<b>0</b>		<b>50</b>		<b>84</b>		<b>16</b>		<b>43</b>		<b>22</b>		<b>43</b>	
<u>Flu type:</u>															
A		0		33 66%		74 88%		10 63%		40 93%		20 91%		35.4 82%	
H1N1		0		1 2%		0 0%		6 38%		0 0%		7 32%		2.8 7%	
H3		0		6 12%		18 21%		1 6%		7 16%		0 0%		6.4 15%	
A (not typed)		0		26 52%		56 67%		3 19%		33 77%		13 59%		26.2 61%	
B		0		11 22%		7 8%		6 38%		3 7%		2 9%		5.8 13%	
Not typed		0		6 12%		1 1%		0 0%		0 0%		0 0%		1.4 3%	
<u>Sex:</u>															
Male		0		17 34%		41 49%		7 44%		17 40%		11 50%		18.6 43%	
Female		0		33 66%		43 51%		9 56%		26 60%		11 50%		24.4 57%	
<u>Age:</u>															
Under 5 years		0		0 0%		0 0%		0 0%		0 0%		0 0%		0 0%	
5 - 17		0		0 0%		0 0%		0 0%		0 0%		0 0%		0 0%	
18 - 44		0		0 0%		1 1%		3 19%		1 2%		2 9%		1.4 3%	
45 - 64		0		7 14%		5 6%		5 31%		6 14%		5 23%		5.6 13%	
65+ years		0		43 86%		78 93%		8 50%		36 84%		15 68%		36 84%	
Average				81.1		81.9		64.9		81.7		71.5		76.2	
<u>Race:</u>															
White		0		32 64%		54 64%		12 75%		35 81%		16 73%		29.8 69%	
Asian		0		2 4%		13 15%		2 13%		1 2%		3 14%		4.2 10%	
Black		0		3 6%		4 5%		2 13%		5 12%		1 5%		3 7%	
Amer Indian		0		0 0%		0 0%		0 0%		0 0%		1 5%		0.2 0%	
Hispanic/Latino		0		2 4%		3 4%		0 0%		1 2%		0 0%		1.2 3%	
Other		0		1 2%		1 1%		0 0%		1 2%		1 5%		0.8 2%	
Unknown		0		10 20%		9 11%		0 0%		0 0%		0 0%		3.8 9%	
<u>Flu vaccine status</u>															
Up to date		0		26 52%		39 46%		6 38%		21 49%		8 36%		20 47%	
Not up to date		0		10 20%		20 24%		8 50%		5 12%		6 27%		9.8 23%	
Unk/NA		0		14 28%		25 30%		2 13%		17 40%		8 36%		13.2 31%	