

# Influenza Update: November 3, 2018

During the week ending November 3, 2018:

- There were no new influenza-related deaths or outbreaks reported this week. One outbreak in a longterm care facility and no deaths have been reported so far this season.
- The percent of ED ILI visits was below the 5-year average for this time of year, and below peak levels observed during the previous 5 influenza seasons. The magnitude of ED ILI visits relative to the total number of ED visits was highest among the pediatric population. Among every age group, the percent of ED ILI visits was below baseline levels and comparable to trends observed at this time of the year during the previous five influenza seasons.

## At a glance

|   | <u>Week Ending</u><br><u>11/03/2018</u> | <u>Since 09/23/2018</u> | <u>5-Year Average to</u><br><u>date</u> |
|---|---|-------------------------|---|
| Laboratory-confirmed influenza deaths                               | 0                                       | 0                       | 0.4                                     |
| Respiratory disease outbreaks at long-term care facilities (LTCFs)  | 0                                       | 1                       | 2                                       |
| Percentage positive influenza tests by PCR <sup>1</sup>             | 1%                                      | Season Peak             | 2.0%                                    |
| Number of labs reporting  | 5                                       | Weekly Average          | 6                                       |
| Number of specimens tested  | 520                                     | Weekly Average          | 541                                     |
| Percentage of emergency department (ED) visits for ILI <sup>2</sup> | 1.03%                                   | Season Peak             | 1.13%                                   |

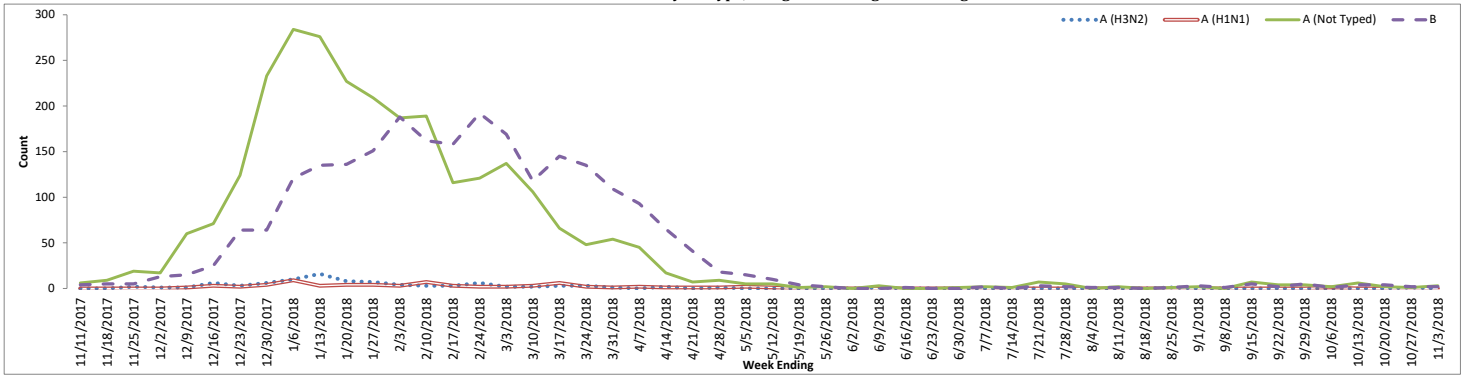
<sup>1</sup>Based on King County hospital laboratory and sentinel provider submissions to CDC's National Respiratory and Enteric Virus Surveillance System (NREVSS). NREVSS data not available for previous seasons due to change in reporting procedures.

<sup>2</sup>Based on Public Health - Seattle & King County's syndromic surveillance data representing aggregate percent of visits to King County EDs.

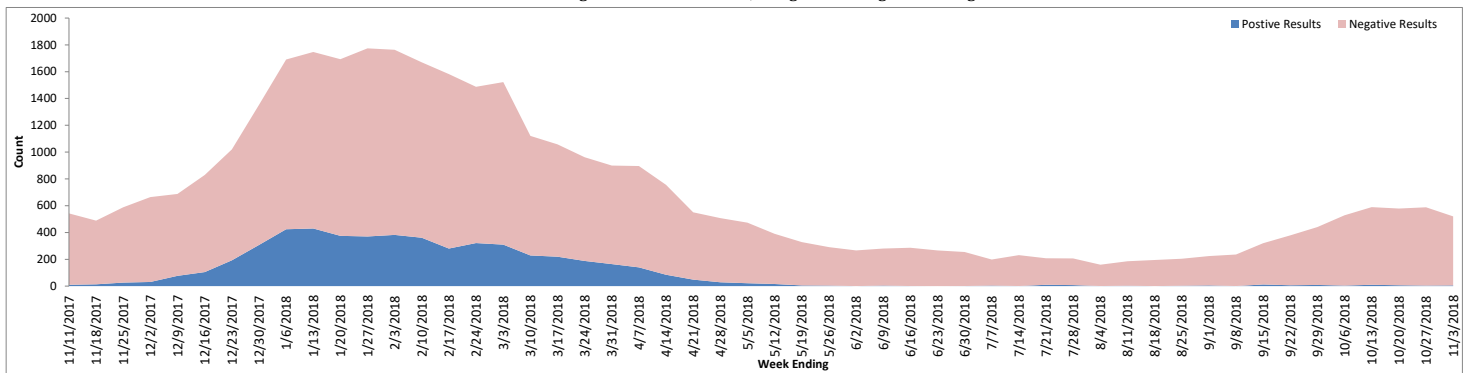
## Submissions to NREVSS by King County labs and sentinel providers, PCR Testing Only

| Week # | Week ending | # Labs reporting | A (H1N1) | A (H3N2) | A (Not typed) | B | # Tested | % Flu positive |
|--------|-------------|------------------|----------|----------|---------------|---|----------|----------------|
| 41     | 10/13/2018  | 6                | 0        | 0        | 6             | 4 | 589      | 1.7%           |
| 42     | 10/20/2018  | 6                | 0        | 0        | 2             | 4 | 579      | 1%             |
| 43     | 10/27/2018  | 5                | 0        | 1        | 1             | 2 | 588      | 0.7%           |
| 44     | 11/3/2018   | 5                | 0        | 0        | 3             | 2 | 520      | 1%             |

Positive Influenza Results by Subtype, Using PCR Testing Methodologies



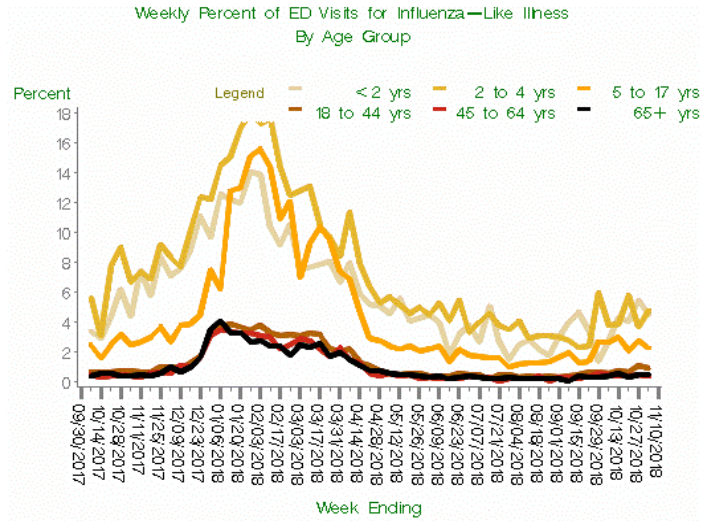
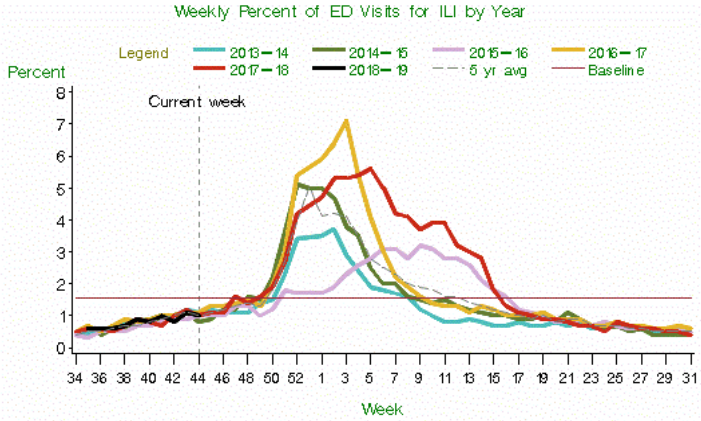
Positive and Negative Influenza Results, Using PCR Testing Methodologies



# Public Health - Seattle & King County

## Summary of Influenza Syndromic and Laboratory Surveillance

### King County Syndromic Surveillance



Note: The change from ICD-9 to ICD-10 codes in October 2015 may impact trends.  
 Last updated Nov 4, 2018 ; 'current week' is week ending Nov 3, 2018  
 Baseline: Mean % ILI during non-flu weeks for previous three seasons, adding two standard deviations.  
 Using rapid antigen data, a non-flu week is a period of 2+ consecutive weeks where each one accounted for < 2% of the season's total number of specimens that tested positive for influenza.

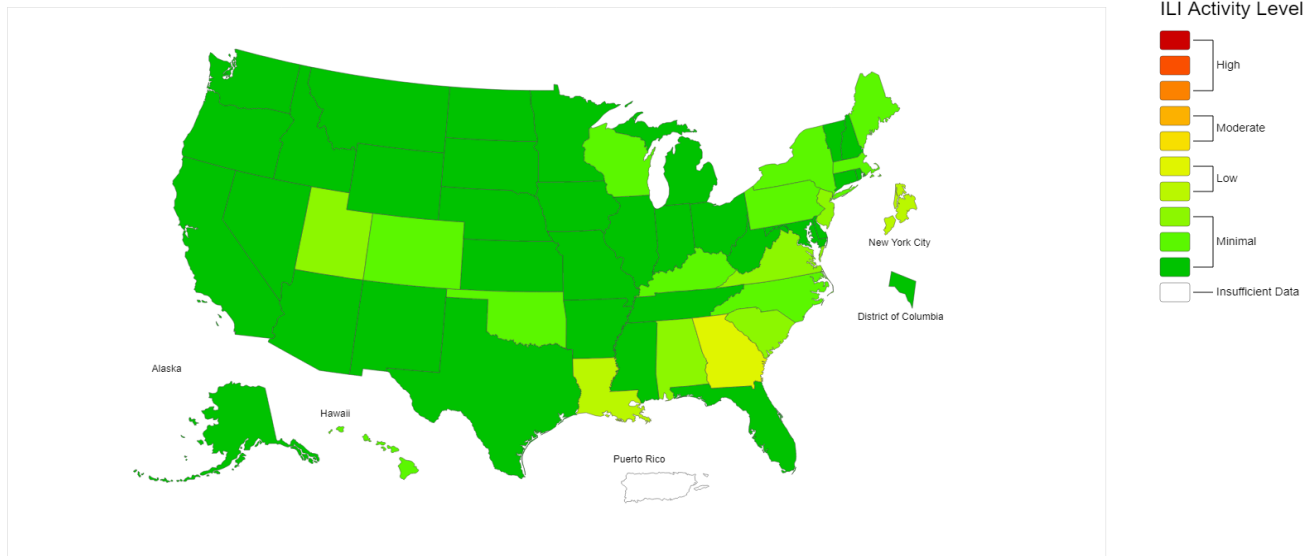
ALLHOSPITALS, Last Updated Nov 7, 2018

### National Data from CDC

**FLUVIEW** A Weekly Influenza Surveillance Report Prepared by the Influenza Division  
 Influenza-Like Illness (ILI) Activity Level Indicator Determined by Data Reported to ILINet



2018-19 Influenza Season Week 43 ending Oct 27, 2018



\*This map uses the proportion of outpatient visits to healthcare providers for influenza-like illness to measure the ILI activity level within a state. It does not, however, measure the extent of geographic spread of flu within a state. Therefore, outbreaks occurring in a single city could cause the state to display high activity levels.  
 \*Data collected in ILINet may disproportionately represent certain populations within a state, and therefore may not accurately depict the full picture of influenza activity for the whole state.  
 \*Data displayed in this map are based on data collected in ILINet, whereas the State and Territorial flu activity map are based on reports from state and territorial epidemiologists. The data presented in this map is preliminary and may change as more data is received.  
 \*Differences in the data presented by CDC and state health departments likely represent differing levels of data completeness with data presented by the state likely being the more complete.  
 \*For the data download you can use Activity Level for the number and Activity Level Label for the text description.

#### Please report any of the following:

- Laboratory-Confirmed influenza-associated deaths
- Patients with novel or unsubtypeable influenza viruses
- Outbreaks of influenza-like illness in a long-term care facility

#### Reporting Timeframe

Within 3 business days  
 Immediately  
 Immediately

#### Contact Information

Phone: (206) 296-4774  
 Fax: (206) 296-4803

**Public Health**  
 Seattle & King County



#### Additional Resources:

[Additional King County Flu Information, Resources, and Surveillance](#)  
[UW Virology Laboratory Respiratory Virus Surveillance](#)  
[Washington State Influenza Surveillance Update](#)

[National Influenza Update](#)  
[Global Influenza Update](#)

Reported Updated

11/7/2018

Public Health - Seattle & King County

Summary of Influenza Deaths and Long-Term Care Facility (LTCF) Influenza Outbreaks

| Updated Wednesday, November 07, 2018   |  |  |                    |      |           |     |                 |     |           |     |           |     |           |     |             |     |
|--|--|--|--------------------|------|-----------|-----|-----------------|-----|-----------|-----|-----------|-----|-----------|-----|-------------|-----|
|  |  |  | Current Week #: 45 |      |           |     | Last Week #: 44 |     |           |     |           |     |           |     |             |     |
|  |  |  | 2018-2019          |      | 2017-2018 |     | 2016-2017       |     | 2015-2016 |     | 2014-2015 |     | 2013-2014 |     | 5-year avg  |     |
| <b>New Investigations Week 45</b>      |  |  |                    |      |           |     |                 |     |           |     |           |     |           |     |             |     |
| Influenza Deaths                       |  |  | 0                  |      | 0         |     | 0               |     | 0         |     | 0         |     | 0         |     |             |     |
| LTCF Outbreaks                         |  |  | 0                  |      | 1         |     | 0               |     | 0         |     | 0         |     | 0         |     |             |     |
| <b>Confirmed Cases as of 11/03/18</b>  |  |  |                    |      |           |     |                 |     |           |     |           |     |           |     |             |     |
| Influenza Deaths Week 44               |  |  | 0                  |      | 0         |     | 1               |     | 0         |     | 0         |     | 0         |     | 0.2         |     |
| Influenza Deaths Season-to-date        |  |  | 0                  |      | 0         |     | 2               |     | 0         |     | 0         |     | 0         |     | 0.4         |     |
| LTCF Outbreaks Week 44                 |  |  | 0                  |      | 0         |     | 0               |     | 0         |     | 0         |     | 0         |     | 0.0         |     |
| LTCF Outbreaks Season-to-date          |  |  | 1                  |      | 0         |     | 7               |     | 1         |     | 0         |     | 1         |     | 1.8         |     |
|  |  |  | 2018-2019          |      | 2017-2018 |     | 2016-2017       |     | 2015-2016 |     | 2014-2015 |     | 2013-2014 |     | 5-year avg  |     |
| <b>Total Seasonal LTCF Outbreaks</b>   |  |  | <b>1</b>           |      | <b>68</b> |     | <b>92</b>       |     | <b>18</b> |     | <b>65</b> |     | <b>15</b> |     | <b>51.6</b> |     |
| <u>Flu type:</u>                       |  |  |                    |      |           |     |                 |     |           |     |           |     |           |     |             |     |
| A                                      |  |  | 0                  | 0%   | 15        | 22% | 62              | 67% | 7         | 39% | 49        | 75% | 9         | 60% | 28.4        | 55% |
| B                                      |  |  | 0                  | 0%   | 6         | 9%  | 3               | 3%  | 7         | 39% | 4         | 6%  | 1         | 7%  | 4.2         | 8%  |
| A and B                                |  |  | 0                  | 0%   | 5         | 7%  | 4               | 4%  | 0         | 0%  | 2         | 3%  | 2         | 13% | 2.6         | 5%  |
| Info not available                     |  |  | 1                  | 100% | 42        | 62% | 23              | 25% | 4         | 22% | 10        | 15% | 3         | 20% | 16.4        | 32% |
|  |  |  | 2018-2019          |      | 2017-2018 |     | 2016-2017       |     | 2015-2016 |     | 2014-2015 |     | 2013-2014 |     | 5-year avg  |     |
| <b>Total Seasonal Influenza Deaths</b> |  |  | <b>0</b>           |      | <b>50</b> |     | <b>84</b>       |     | <b>16</b> |     | <b>43</b> |     | <b>22</b> |     | <b>43</b>   |     |
| <u>Flu type:</u>                       |  |  |                    |      |           |     |                 |     |           |     |           |     |           |     |             |     |
| A                                      |  |  | 0                  |      | 33        | 66% | 74              | 88% | 10        | 63% | 40        | 93% | 20        | 91% | 35.4        | 82% |
| H1N1                                   |  |  | 0                  |      | 1         | 2%  | 0               | 0%  | 6         | 38% | 0         | 0%  | 7         | 32% | 2.8         | 7%  |
| H3                                     |  |  | 0                  |      | 6         | 12% | 18              | 21% | 1         | 6%  | 7         | 16% | 0         | 0%  | 6.4         | 15% |
| A (not typed)                          |  |  | 0                  |      | 26        | 52% | 56              | 67% | 3         | 19% | 33        | 77% | 13        | 59% | 26.2        | 61% |
| B                                      |  |  | 0                  |      | 11        | 22% | 7               | 8%  | 6         | 38% | 3         | 7%  | 2         | 9%  | 5.8         | 13% |
| Not typed                              |  |  | 0                  |      | 6         | 12% | 1               | 1%  | 0         | 0%  | 0         | 0%  | 0         | 0%  | 1.4         | 3%  |
| <u>Sex:</u>                            |  |  |                    |      |           |     |                 |     |           |     |           |     |           |     |             |     |
| Male                                   |  |  | 0                  |      | 17        | 34% | 41              | 49% | 7         | 44% | 17        | 40% | 11        | 50% | 18.6        | 43% |
| Female                                 |  |  | 0                  |      | 33        | 66% | 43              | 51% | 9         | 56% | 26        | 60% | 11        | 50% | 24.4        | 57% |
| <u>Age:</u>                            |  |  |                    |      |           |     |                 |     |           |     |           |     |           |     |             |     |
| Under 5 years                          |  |  | 0                  |      | 0         | 0%  | 0               | 0%  | 0         | 0%  | 0         | 0%  | 0         | 0%  | 0           | 0%  |
| 5 - 17                                 |  |  | 0                  |      | 0         | 0%  | 0               | 0%  | 0         | 0%  | 0         | 0%  | 0         | 0%  | 0           | 0%  |
| 18 - 44                                |  |  | 0                  |      | 0         | 0%  | 1               | 1%  | 3         | 19% | 1         | 2%  | 2         | 9%  | 1.4         | 3%  |
| 45 - 64                                |  |  | 0                  |      | 7         | 14% | 5               | 6%  | 5         | 31% | 6         | 14% | 5         | 23% | 5.6         | 13% |
| 65+ years                              |  |  | 0                  |      | 43        | 86% | 78              | 93% | 8         | 50% | 36        | 84% | 15        | 68% | 36          | 84% |
| Average                                |  |  |                    |      | 81.1      |     | 81.9            |     | 64.9      |     | 81.7      |     | 71.5      |     | 76.2        |     |
| <u>Race:</u>                           |  |  |                    |      |           |     |                 |     |           |     |           |     |           |     |             |     |
| White                                  |  |  | 0                  |      | 32        | 64% | 54              | 64% | 12        | 75% | 35        | 81% | 16        | 73% | 29.8        | 69% |
| Asian                                  |  |  | 0                  |      | 2         | 4%  | 13              | 15% | 2         | 13% | 1         | 2%  | 3         | 14% | 4.2         | 10% |
| Black                                  |  |  | 0                  |      | 3         | 6%  | 4               | 5%  | 2         | 13% | 5         | 12% | 1         | 5%  | 3           | 7%  |
| Amer Indian                            |  |  | 0                  |      | 0         | 0%  | 0               | 0%  | 0         | 0%  | 0         | 0%  | 1         | 5%  | 0.2         | 0%  |
| Hispanic/Latino                        |  |  | 0                  |      | 2         | 4%  | 3               | 4%  | 0         | 0%  | 1         | 2%  | 0         | 0%  | 1.2         | 3%  |
| Other                                  |  |  | 0                  |      | 1         | 2%  | 1               | 1%  | 0         | 0%  | 1         | 2%  | 1         | 5%  | 0.8         | 2%  |
| Unknown                                |  |  | 0                  |      | 10        | 20% | 9               | 11% | 0         | 0%  | 0         | 0%  | 0         | 0%  | 3.8         | 9%  |
| <u>Flu vaccine status</u>              |  |  |                    |      |           |     |                 |     |           |     |           |     |           |     |             |     |
| Up to date                             |  |  | 0                  |      | 26        | 52% | 39              | 46% | 6         | 38% | 21        | 49% | 8         | 36% | 20          | 47% |
| Not up to date                         |  |  | 0                  |      | 10        | 20% | 20              | 24% | 8         | 50% | 5         | 12% | 6         | 27% | 9.8         | 23% |
| Unk/NA                                 |  |  | 0                  |      | 14        | 28% | 25              | 30% | 2         | 13% | 17        | 40% | 8         | 36% | 13.2        | 31% |