

Influenza Update: December 22, 2018

During the week ending December 22, 2018:

- There were no new influenza-related deaths or outbreaks reported this week. Two outbreaks in a longterm care facility and no deaths have been reported so far this season.
- The percent of visits to King County emergency departments (ED) for influenza-like illness (ILI) was above baseline levels among all ages combined, as well as among children ages 2-4 years and 5-17 years. The percent of ED ILI visits was below baseline levels among all other age groups. The percent of ED ILI visits was highest among the pediatric population.
- However, among all ages combined, the percent of ED ILI visits was below the 5-year average for this time of year, and below peak levels observed during each of the previous 5 influenza seasons.

At a glance

	<u>Week Ending</u> <u>12/22/2018</u>	<u>Since 09/23/2018</u>	<u>5-Year Average to</u> <u>date</u>
Laboratory-confirmed influenza deaths	0	0	1.8
Respiratory disease outbreaks at long-term care facilities (LTCFs)	0	2	6
Percentage positive influenza tests by PCR ¹	4.9%	Season Peak	4.9%
Number of labs reporting	3	Weekly Average	5
Number of specimens tested	594	Weekly Average	572
Percentage of emergency department (ED) visits for ILI ²	1.87%	Season Peak	1.87%

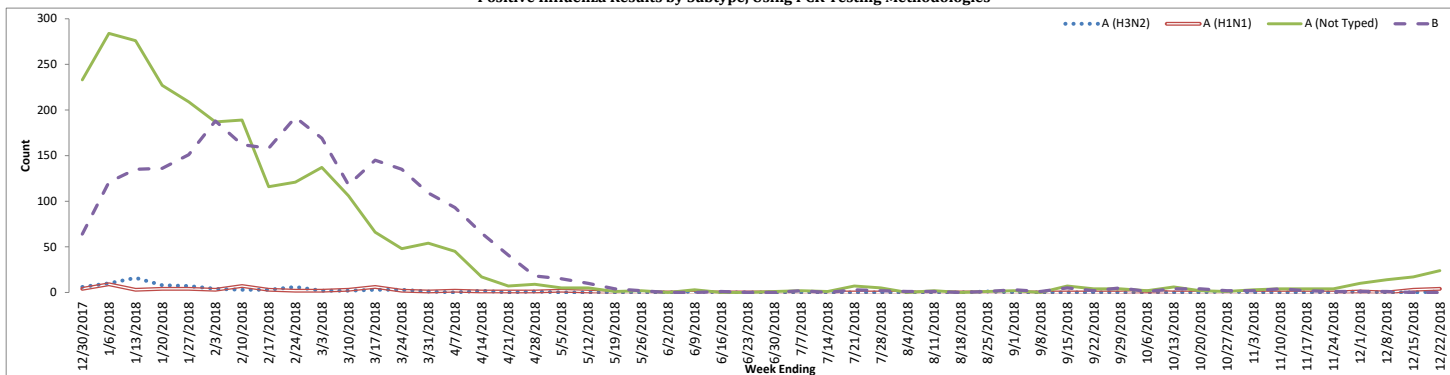
¹Based on King County hospital laboratory and sentinel provider submissions to CDC's National Respiratory and Enteric Virus Surveillance System (NREVSS). NREVSS data not available for previous seasons due to change in reporting procedures.

²Based on Public Health - Seattle & King County's syndromic surveillance data representing aggregate percent of visits to King County EDs.

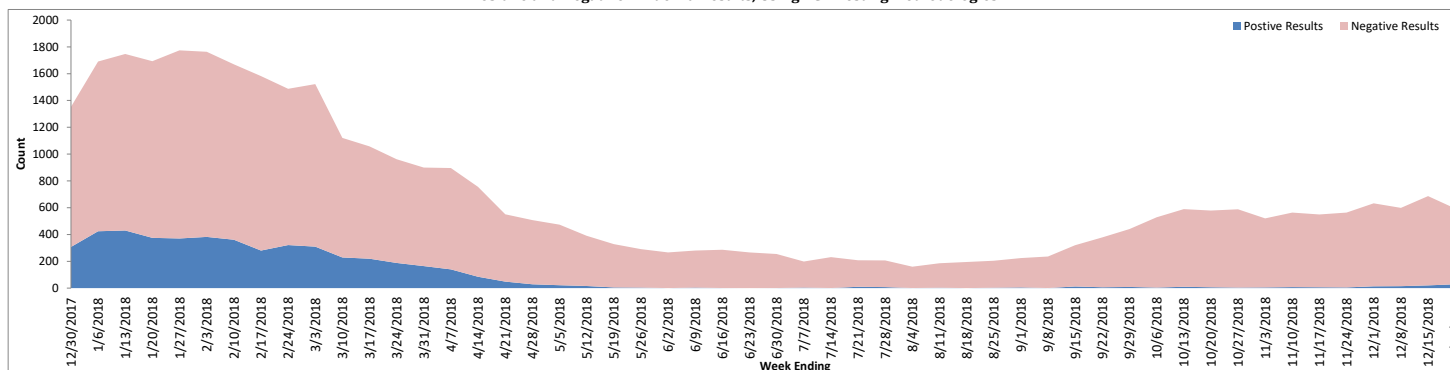
Submissions to NREVSS by King County labs and sentinel providers, PCR Testing Only

Week #	Week ending	# Labs reporting	A (H1N1)	A (H3N2)	A (Not typed)	B	# Tested	% Flu positive
48	12/1/2018	5	1	1	10	1	633	2.1%
49	12/8/2018	5	0	0	14	1	599	2.5%
50	12/15/2018	4	3	0	17	0	687	2.9%
51	12/22/2018	3	4	1	24	0	594	4.9%

Positive Influenza Results by Subtype, Using PCR Testing Methodologies



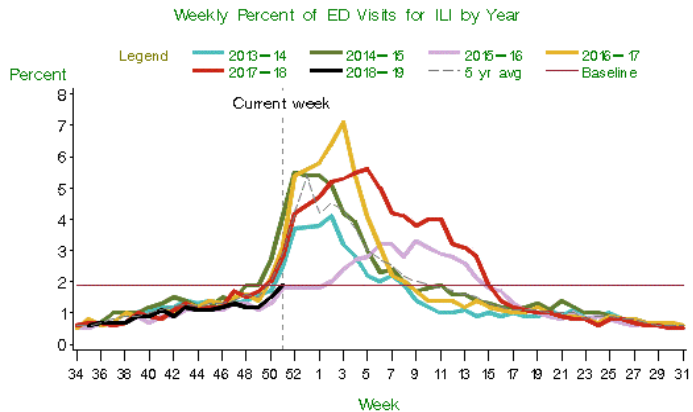
Positive and Negative Influenza Results, Using PCR Testing Methodologies



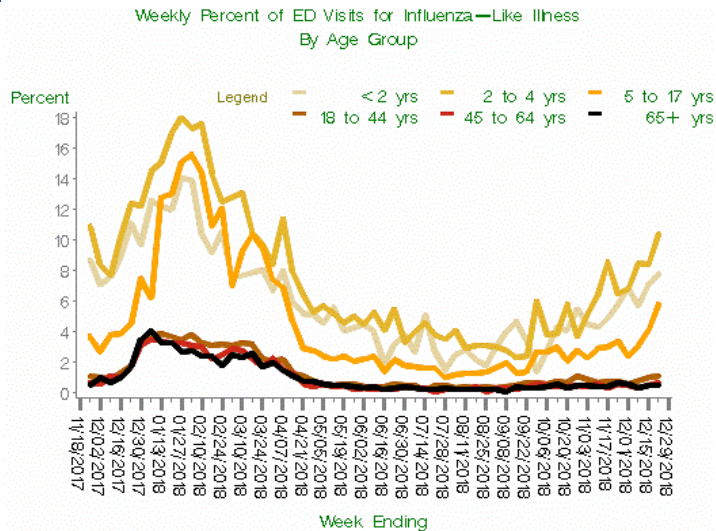
Public Health - Seattle & King County

Summary of Influenza Syndromic and Laboratory Surveillance

King County Syndromic Surveillance



Note: The change from ICD-9 to ICD-10 codes in October 2015 may impact trends.
 Last updated Dec 23, 2018 ; 'current week' is week ending Dec 22, 2018
 Baseline: Mean % ILI during non-flu weeks for previous three seasons, adding two standard deviations.
 Using rapid antigen data, a non-flu week is a period of 2+ consecutive weeks where each one accounted for <2% of the season's total number of specimens that tested positive for influenza.



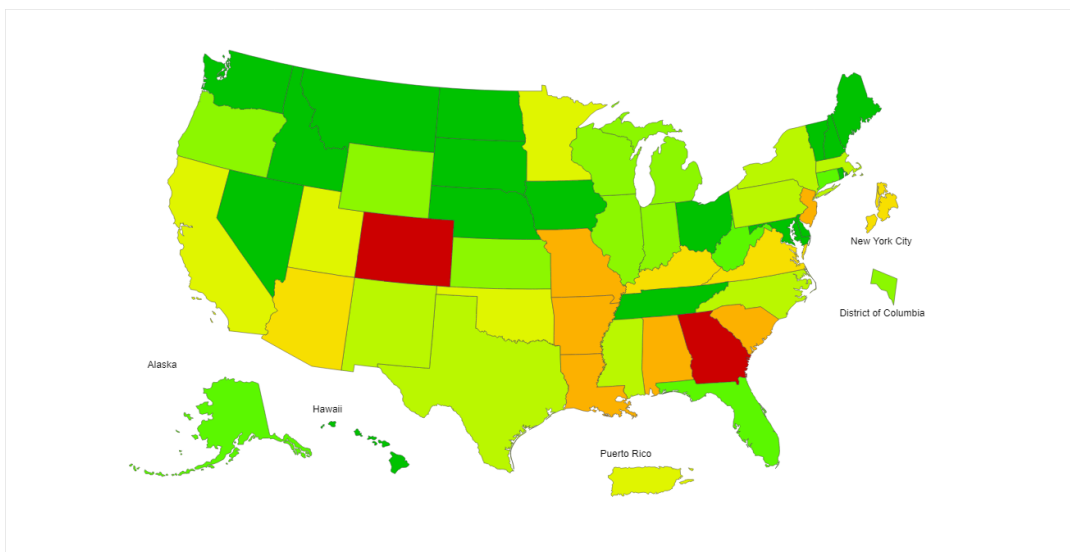
ALLHOSPITALS, Last Updated Dec 25, 2018

National Data from CDC

FLUVIEW A Weekly Influenza Surveillance Report Prepared by the Influenza Division
 Influenza-Like Illness (ILI) Activity Level Indicator Determined by Data Reported to ILINet



2018-19 Influenza Season Week 50 ending Dec 15, 2018



*This map uses the proportion of outpatient visits to healthcare providers for influenza-like illness to measure the ILI activity level within a state. It does not, however, measure the extent of geographic spread of flu within a state. Therefore, outbreaks occurring in a single city could cause the state to display high activity levels.
 *Data collected in ILINet may disproportionately represent certain populations within a state, and therefore may not accurately depict the full picture of influenza activity for the whole state.
 *Data displayed in this map are based on data collected in ILINet, whereas the State and Territorial flu activity map are based on reports from state and territorial epidemiologists. The data presented in this map is preliminary and may change as more data is received.
 *Differences in the data presented by CDC and state health departments likely represent differing levels of data completeness with data presented by the state likely being the more complete.
 *For the data download you can use Activity Level for the number and Activity Level Label for the text description.

Please report any of the following:

- Laboratory-Confirmed influenza-associated deaths
- Patients with novel or unsubtypeable influenza viruses
- Outbreaks of influenza-like illness in a long-term care facility

Reporting Timeframe

- Within 3 business days
- Immediately
- Immediately

Contact Information

Phone: (206) 296-4774
 Fax: (206) 296-4803



Additional Resources:

- [Additional King County Flu Information, Resources, and Surveillance](#)
- [UW Virology Laboratory Respiratory Virus Surveillance](#)
- [Washington State Influenza Surveillance Update](#)

- [National Influenza Update](#)
- [Global Influenza Update](#)

Reported Updated 12/26/2018

Public Health - Seattle & King County

Summary of Influenza Deaths and Long-Term Care Facility (LTCF) Influenza Outbreaks

Updated Wednesday, December 26, 2018															
				Current Week #: 52				Last Week #: 51							
		2018-2019		2017-2018		2016-2017		2015-2016		2014-2015		2013-2014		5-year avg	
New Investigations Week 52															
Influenza Deaths		0		2		2		0		0		1			
LTCF Outbreaks		0		5		9		1		3		2			
Confirmed Cases as of 12/22/18															
Influenza Deaths Week 51		0		0		0		0		1		1		0.4	
Influenza Deaths Season-to-date		0		1		3		2		2		1		1.8	
LTCF Outbreaks Week 51		0		3		1		0		5		0		1.8	
LTCF Outbreaks Season-to-date		2		4		9		3		10		3		5.8	
		2018-2019		2017-2018		2016-2017		2015-2016		2014-2015		2013-2014		5-year avg	
Total Seasonal LTCF Outbreaks		2		68		92		18		65		15		51.6	
Flu type:															
A		0 0%		15 22%		62 67%		7 39%		49 75%		9 60%		28.4 55%	
B		0 0%		6 9%		3 3%		7 39%		4 6%		1 7%		4.2 8%	
A and B		0 0%		5 7%		4 4%		0 0%		2 3%		2 13%		2.6 5%	
Info not available		2 100%		42 62%		23 25%		4 22%		10 15%		3 20%		16.4 32%	
		2018-2019		2017-2018		2016-2017		2015-2016		2014-2015		2013-2014		5-year avg	
Total Seasonal Influenza Deaths		0		50		84		16		43		22		43	
Flu type:															
A		0		33 66%		74 88%		10 63%		40 93%		20 91%		35.4 82%	
H1N1		0		1 2%		0 0%		6 38%		0 0%		7 32%		2.8 7%	
H3		0		6 12%		18 21%		1 6%		7 16%		0 0%		6.4 15%	
A (not typed)		0		26 52%		56 67%		3 19%		33 77%		13 59%		26.2 61%	
B		0		11 22%		7 8%		6 38%		3 7%		2 9%		5.8 13%	
Not typed		0		6 12%		1 1%		0 0%		0 0%		0 0%		1.4 3%	
Sex:															
Male		0		17 34%		41 49%		7 44%		17 40%		11 50%		18.6 43%	
Female		0		33 66%		43 51%		9 56%		26 60%		11 50%		24.4 57%	
Age:															
Under 5 years		0		0 0%		0 0%		0 0%		0 0%		0 0%		0 0%	
5 - 17		0		0 0%		0 0%		0 0%		0 0%		0 0%		0 0%	
18 - 44		0		0 0%		1 1%		3 19%		1 2%		2 9%		1.4 3%	
45 - 64		0		7 14%		5 6%		5 31%		6 14%		5 23%		5.6 13%	
65+ years		0		43 86%		78 93%		8 50%		36 84%		15 68%		36 84%	
Average				81.1		81.9		64.9		81.7		71.5		76.2	
Race:															
White		0		32 64%		54 64%		12 75%		35 81%		16 73%		29.8 69%	
Asian		0		2 4%		13 15%		2 13%		1 2%		3 14%		4.2 10%	
Black		0		3 6%		4 5%		2 13%		5 12%		1 5%		3 7%	
Amer Indian		0		0 0%		0 0%		0 0%		0 0%		1 5%		0.2 0%	
Hispanic/Latino		0		2 4%		3 4%		0 0%		1 2%		0 0%		1.2 3%	
Other		0		1 2%		1 1%		0 0%		1 2%		1 5%		0.8 2%	
Unknown		0		10 20%		9 11%		0 0%		0 0%		0 0%		3.8 9%	
Flu vaccine status															
Up to date		0		26 52%		39 46%		6 38%		21 49%		8 36%		20 47%	
Not up to date		0		10 20%		20 24%		8 50%		5 12%		6 27%		9.8 23%	
Unk/NA		0		14 28%		25 30%		2 13%		17 40%		8 36%		13.2 31%	