

Hepatitis A

HEALTH WARNING FOR PEOPLE LIVING HOMELESS (Eastside)

WHAT IS HEPATITIS A?

Hepatitis A (hep A) is a virus that spreads easily. Many people don't know they have hep A so they spread it without knowing.

It can cause severe liver disease that can last for months.

Sometimes people die from hep A.

Hep A has been spreading in people living homeless in the U.S.

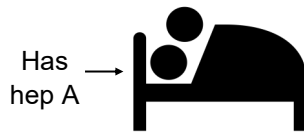


HOW DOES IT SPREAD?

Hep A is in the poop of someone with hep A. If they haven't washed their hands after using the toilet, tiny bits of poop can get on things they touch. Hep A spreads from:



Touching objects or eating food that someone with hep A handled



Having sex with someone who has hep A



Sharing needles, pipes, or other items to take drugs



Wash your hands with soap and water after using the toilet, and before you cook or eat! Soap and water work best, but if they aren't available, use alcohol-based hand gel.

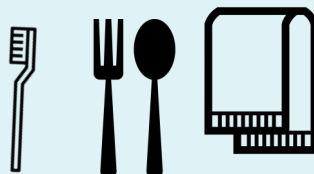
HOW CAN YOU PREVENT HEPATITIS A?



Don't share food, drinks, needles, or smokes with other people



Don't have sex with someone who has hep A



Use your own towels, toothbrush and utensils



Get the hep A vaccine

SYMPTOMS OF HEPATITIS A



Fever



Fatigue



Vomiting



No appetite



Jaundice
(yellow eyes
& skin)



Dark pee,
pale poop,
diarrhea

Some people with hep A don't have any symptoms

If you think you might have hep A, see your doctor or go to the hospital

YOU CAN PROTECT YOURSELF FROM HEPATITIS A

Get a free hep A vaccine shot at these locations:

EASTSIDE LOCATIONS:

Public Health Eastgate Primary Care

14350 SE Eastgate Way, Bellevue

Open Mon—Fri, daytime

Public Health Eastgate Family Planning Clinic

14350 SE Eastgate Way, Bellevue

Open Mon—Fri, daytime

SEATTLE LOCATIONS:

Pioneer Square Clinic

206 3rd Ave S

Open Mon—Fri, daytime

Hepatitis Education Project

1621 S Jackson St

Open Tues & Thurs, 1-5 PM, or by appointment

3rd Ave Center

2028 3rd Ave (next to Angeline's Day Center)

Open Mon—Fri, daytime

Ballard NeighborCare Clinic

1753 NW 56th St (at the Nyer Urness House)

Open Mon—Fri, daytime

Boren Clinic

1930 Boren Ave (at the Sobering Center)

Open Mon—Fri, mornings only

45th St Youth Clinic (ages 12-26)

1629 N 45th St

Open Weds & Thurs, 6-9 PM

Robert Clewis Needle Exchange

2124 4th Ave

Open Mon—Fri; Sat 2-4 PM

Mobile Medical Van

Various locations in Seattle, Tues—Fri

For locations, check: Kingcounty.gov/mobilemed

Downtown Public Health Clinic

2124 4th Ave

Open Mon-Fri, daytime

Most pharmacies offer the hep A shots if you have an insurance card

More information from Healthcare for the Homeless Network: www.kingcounty.gov/hch

Thanks to San Diego Health and Human Services for adaptation of their materials.

Last updated: 4/29/2019

Public Health
Seattle & King County

