

TULAFONO MO LE FAAOGAINA O PUPUNIFOFOGA I TOTONU O FALE Taiala mo Pisinisi

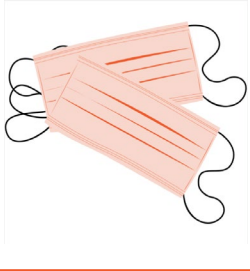


E mafai ona filifili e le pisinisi le auala e faatino ai le tulafono mo le fa'aaogaina o pupunifofoga poo talifofoga mo latou pisinisi.

Ona e faigata tele le siakiina o tulaga tau tuipuipui mo tagata uma e ulufale atu i lou pisinisi, o loo fautuaina e le Local Health Officer Directive (Faatonuga mai le Ofisa o Soifua Maloloina) a le King County ia taumafai pea ona faamalosia le fa'aaogaina o talifofoga mo tagata faigaluega faapea tagata faatau ao latou iai i totonu o lou pisinisi.

O mea e Mafai Ona Fai	Manaomia (e le DOH poo le L&I)	Fautuaina Malosi (e le Faatonuga mai le King County)	E Filifili e le Pisinisi pe faia
Faapipii ni saina, i gagana e masani ona faaoga e lou pisinisi, e faalauiloa ai e manaomia le fa'aaogaina o pupunifofoga mo tagata e lei maua le tuipuipui pe ua nao le tasi le tuipuipui ua maua	X	Faapipii ni saina e uunaia pea tagata uma e faaoga le latou pupunifofoga	
MO LE AUFAIGALUEGA:			
E moomia le fa'aaogaina o pupunifofoga mo afaigaluega e lei maua latou tuipuipui faapea latou ua nao le tasi le tuipuipui ua maua	X		
E moomia le fa'aaogaina o pupunifofoga mo latou ua maea ona maua uma latou tuipuipui		X	X
E moomia le faamaoniaga ua maua e le tagata faigaluega le tuipuipui ina ia maua le faatagana e latou te galulue e aunoa ma se pupunifofoga	E faamalosia mo pisinisi e faatagaina le galulue e aunoa ma se pupunifofoga mo le afaigaluega ua maea le latou tuipuipui		X
MO TAGATA FAATAU:			
E moomia pupunifofoga mo tagata faatau uma e lei maua le tuipuipui faapea tagata ua nao le tasi le tuipuipui ua maua	X		
E moomia le fa'aaogaina o pupunifofoga mo tagata faatau ua mauaina o latou tuipuipui		X	X
Fesili i tagata faatau mo se faamaoniaga ua maua o latou tuipuipui			X

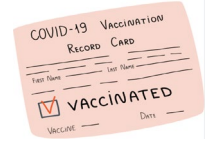
O lenei ata e faamatala poo a tuutuuga e faamalosia ma tuutuuga e fautuaina e le Washington State Department of Health (DOH, Matagaluega Soifua Maloloina mo le Setete o Uasigitone), le Washington Department of Labour and Industries (L&I, Matagaluega o Galuega ma Pisinisi o Uasigitone) ma le Public Health - Seattle & King County (Faalapopotogota mo le vaai ole Soifua Maloloina o Tagata Lautele ole Seattle & King County).



O le faamalosiaina o le faaaogaina o pupunifofoga o le auala e pito i sili ona **SAOGALEMU** ma **FAIGOFIE** mo le puipuiga o lou afaigaluega, o tagata faatau ma tagata lautele.

Ae peitai, a e manatu e le moomia ni pupunifofoga mo lou afaigaluega ma tagata faatau *ua atoatoa uma a latou tuipuipui*, o mea nei e mafai ona fai ina ia e usitaia pea le tulafono mo le fa'aaogaina o pupunifofoga:

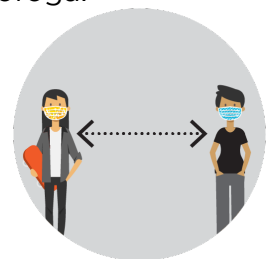
- 1. Faamaonia le tulaga tau tuipuipui mo tagata uma e ulufale atu i le fale poo le nofoaga o lou pisinisi.**
Pepa e talia mo le faamaoniaga o tulaga tau tuipuipui e lavea ai le:
 - Le pepa ua faatagaina e le Centers for Disease Control and Prevention (CDC, Ofisa Tutotonu mo le Vaaiga o le Pipisi o Faama'i ma le Puipuia mai Faama'i) e faailoa atu poo a tuipuipui ua maua
 - Se ata o lea pepa
 - Se faamaoniaga mai le fomai masani
 - Se faamaoniaga mai faamaumauga ma faamatalaga tau tuipuipui o le setete



E moomia ni faamaumauga e faamaonia ai le auala o loo fa'aaogaina e lou pisinisi mo nei gaoiga pea talosagaina e le L&I. E faamalasia e le L&I le faamaoniaga o tulaga tau tuipuipui mo le afaigaluega afai e faatagaina e le pisinisi le latou galulue e aunoa ma se pupunifofoga.

- 2. Faamautu se auala poo se faiga e faaoga e lou pisinisi ina ia mataitu le fa'aaogaina o pupunifofoga mo latou e lei maua pe e leo maea latou tuipuipui. O ni faaitaiga o nei auala:**
 - Faamautu ni vaega o le falefaigaluega e galulue ai latou ua maua o latou tuipuipui ma e tatau ona 6 futu le va ma isi vaega ua faatulagaina mo latou e lei maua i le tuipuipui
 - Faatulagaina se taimi o le aso e moomia ai le fa'aaogaina o pupunifofoga mo tagata faatau uma ma se taimi faapitoa mo tagata faatau ua maea o latou tuipuipui e le faamalosiaina le fa'aaogaina o pupunifofoga.

- 3. E faamalasia le fa'aaogaina o pupunifofoga ma le tumamao mai i isi tagata i taimi uma mo latou uma e lei faia latou tuipuipui ma e lei maea le faiga o latou tuipuipui.**



A iai ni ou fesili, asiasi ane le coronavirus@kingcounty.gov (e maua uma tali i gagana Samoa).

O le a fa'aaogaina pea le Local Health Officer Directive (20 Me, 2021) seia oo i se taimi e faamaonia ai e le King County ua ausia le 70% o tagata e 16 tausaga ma matua atu i le King County ua atoatoa o latou tuipuipui. A faamaonia leni tulaga, e faamalasia pea taitaiga mai le DOH ma le L&I e uiga i le fa'aaogaina o pupunifofoga mo pisinisi ua lisiina i leni pepa.

Mo nisi faamatalaga e uiga i le [DOH Taitaiga e uiga i le faaaogaina o Pupuni Fofoga mo Pisinisi](#). (o leni upega tafailagi e nao le gagana Igilisi e maua iai)