



Koj aikwij ke jibañ in kattone ak kalbuuj?

King County ej bojak in jibañ

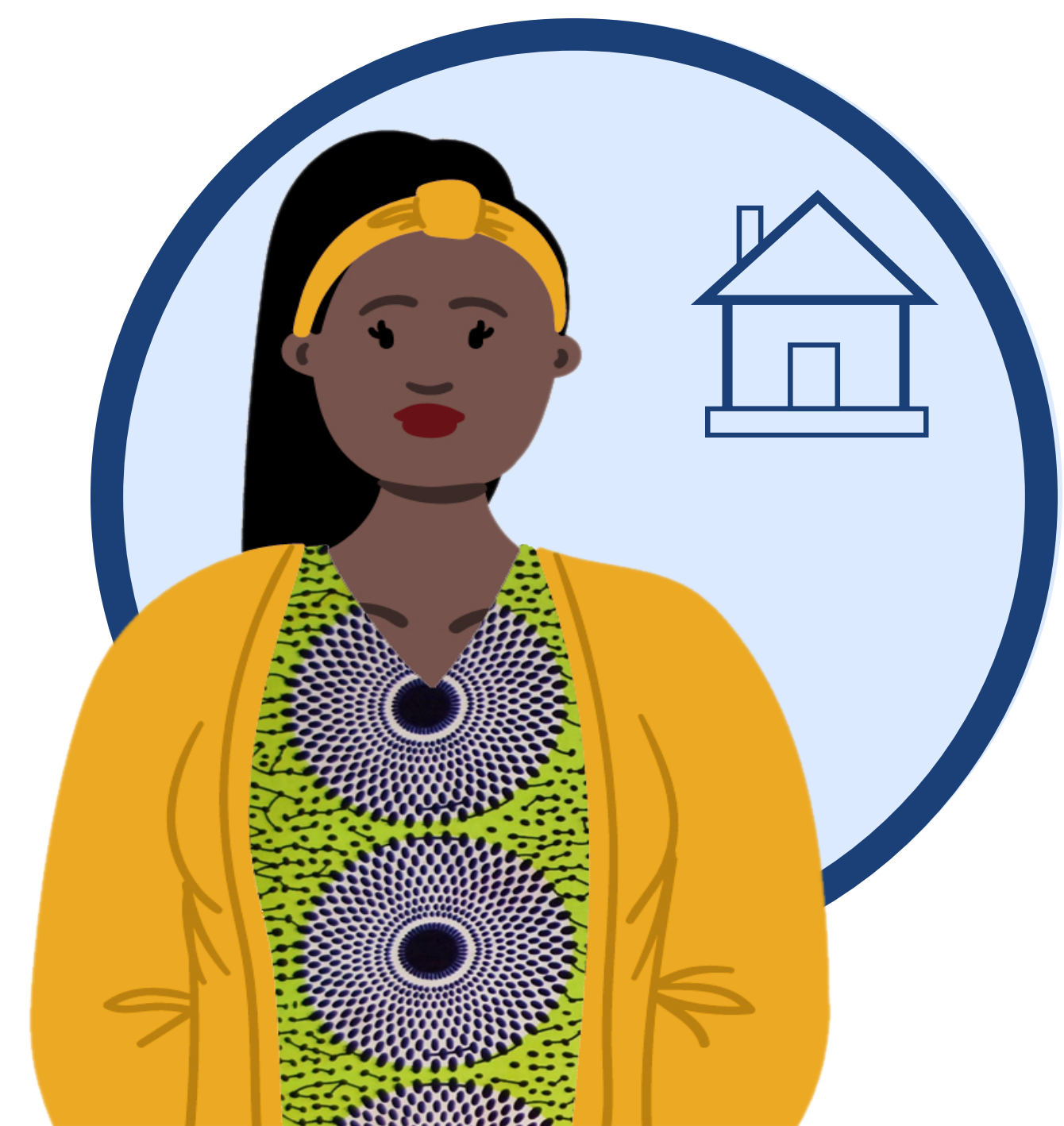


Kattone im Kalbuuj: Ta oktak in men kein?



Kattone

Kattone eok make ej ñan armij ro emoj kakillen ir ke ewor COVID-19 ak kakollen ko enwõt pipa, pokpok, ak kajinek. Ñe koj make lok iam (kattone eok) ilo ien am nañinmij, koj böbrae jen am kanañinmij ro iloan mweo ak armij ro jõt ilo jukjuk in ber eo.



Kalbuuj

Kalbuuj ej ñan armij eo ej eñjake ibben make bwe emman wõt an mour bōtab ear kebak lok iturin armij eo juon ewor COVID-19 ibben. Ilo ien am kalbuuj, ro elap air tijemlok ikkijen ajmour rar ba ñan kwe bwe kon make lok iam jen ro jõt iumin 14 raan im kakillen wõt nañinmij in. Emaroñ bar loñ wawen ko rokadu lok ekkar nan jekjek ko rej walok ilo juon jukjuk in bed. Am aikuj kattone eok ej einwot am bar aikuj bed wot imweo im oran raan in am aikuj kattone ro jet ej 10 raan.

Ta in Isolation and Quarantine (I&Q) jentōr?



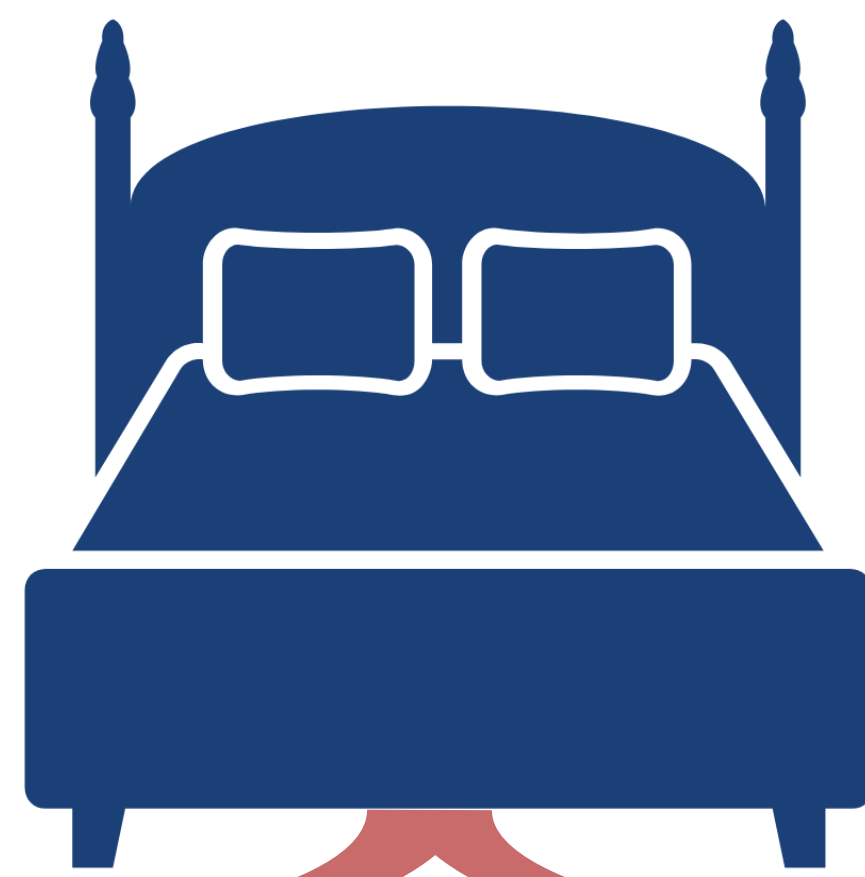
I&Q jentōr ko rej kōbellok jikin ber ko rōkon, rōrreo, im renaj kōjbarok armij ro rejjab maroñ kattone ak kalbuuj ir make ilo moko imweir, ak ro ejjelok mweir em. Jikin kein ejelok wōnaer im rej bed ilo itino nan aolep, im ilo am bed ejelok enaj kwalok ñan jabdrewōt armej ilikin *Public Health*.

Kwōjab aikuji juōn am ID in kien ñan am bed ijin.

I&Q jentōr kein rej komane ruo wawein ko raurōk: rej kōmeraik lok am mour ilo tōre in elap an bin im rej barenwōt kadriklok an ajedeed *COVID-19* eo.

Elañe koj kōnan kattone eok make ak kalbuuj imweo mōm ak ebwe an abañ ñan am tōbar aikwij ko am enwōt mōñā ak uno ko, jouj im kir tok kim. Jenaj kajeoñ bukōt woj jibañ ko ñan kwe.

Wōn ro remaroñ ber ilo *King County Isolation & Quarantine* jentōr ko?



Jabrewōt eo ejjab maroñ kattone ak kalbuuj i make ilo mweo mōn



Aolep ro ejjelok juōn ruum ejenolok ñan aer bed ie im kajimouruur jan ro jet ilon kabijuknen eo



Armej ro rej jokwe ilo imoko einwōt shelter ko im moko jet armej rej jibadōki elañe rej aikuji jibañ in jikin jokwe



Armij ro ejjelok mweir

Rej aolep ruainene, jekdoon kwe ria, kabuñ eo am, kadkadum einwōt juōn maan ak kōra, kelet in ro kwōj babu ibaer, jekjek in am bed ijokein, ak an loñ utamwe ko ilo anbwin. Jabdrewōt uwaan baamle eo, ekoba ajiri ro remaron bed ilon juon room. Ruum kein rebojak nan ro eloñ utamwe ilo anbwin.

Ta ial in jibañ ko enwōt juon *Guest* eo ej ber ilo *King County Isolation and Quarantine* jentōr eo?



Mōñā ko kile ke rej loor
Honor Dietary Requirements



Jikin Jeek Ibben
Takto Eo Am



Mental Health Support



Ijōkein retiljek im bojak
kin kooj im mōttan in
kōmra ko ak towel



Kōmaolal im Kein
Kabojak ko



TV Kebōl ak Tablōt
ko



24/7 Jibañ ko ilo
Talpoon & ilo Kajin ko



24/7 *Security*



Ial ñan im jen Jikin eo



Ikkir tok Ñan Am Bōk Jibañ

Kir lok *King County COVID-19 Call* jentōr eo ñan am lale jibañ ko jen *Isolation & Quarantine*. Ewor rukook.

Talpoon #: (206) 477-3977 Awa ko: 8 AM – 10 PM aolep raan

Ñan melele ko jōt: kingcounty.gov/covid/marshallese