

Asthma (Adults)

Asthma (Adults)

- Most recent data (2013): 9% or about 142,700 King County adults age 18+.
- Trend over time: 2000-13: flat
- Description: Ever been told by a doctor, nurse or other health professional to have asthma and still have asthma

Asthma (adults), King County, 2009-2013 average

	Percent	Lower CI	Upper CI
King County (adults age 18+)	9	8	10
AGE			
18-24	9	7	12
25-44	9	7	10
45-64	9	8	10
65+	8	7	10
GENDER			
Male	7	6	8
Female	11	10	12
RACE/ETHNICITY			
AIAN	17	9	30
Asian	4	3	5
Black	8	6	12
Hispanic	7	5	11
Multiple	12	8	19
NHPI	6 §	2 §	16 §
White	10	9	11
HOUSEHOLD INCOME			
<\$15,000	12	10	16
\$15,000 to \$24,999	12	10	16
\$25,000 to \$34,999	12	9	15
\$35,000 to \$49,999	9	7	12
\$50,000 to \$74,999	7	6	9
\$75,000+	8	7	9
REGION			
East	8	7	10
North	9	7	13
Seattle	9	8	10
South	9	8	11

Comparisons:

- Higher than King County rate (yellow)
- Lower than King County rate (green)

Notes:

Source: Behavioral Risk Factor Surveillance System.

Prepared by Public Health - Seattle & King County, APDE, 12/2014.

CI is 95% Confidence Interval.

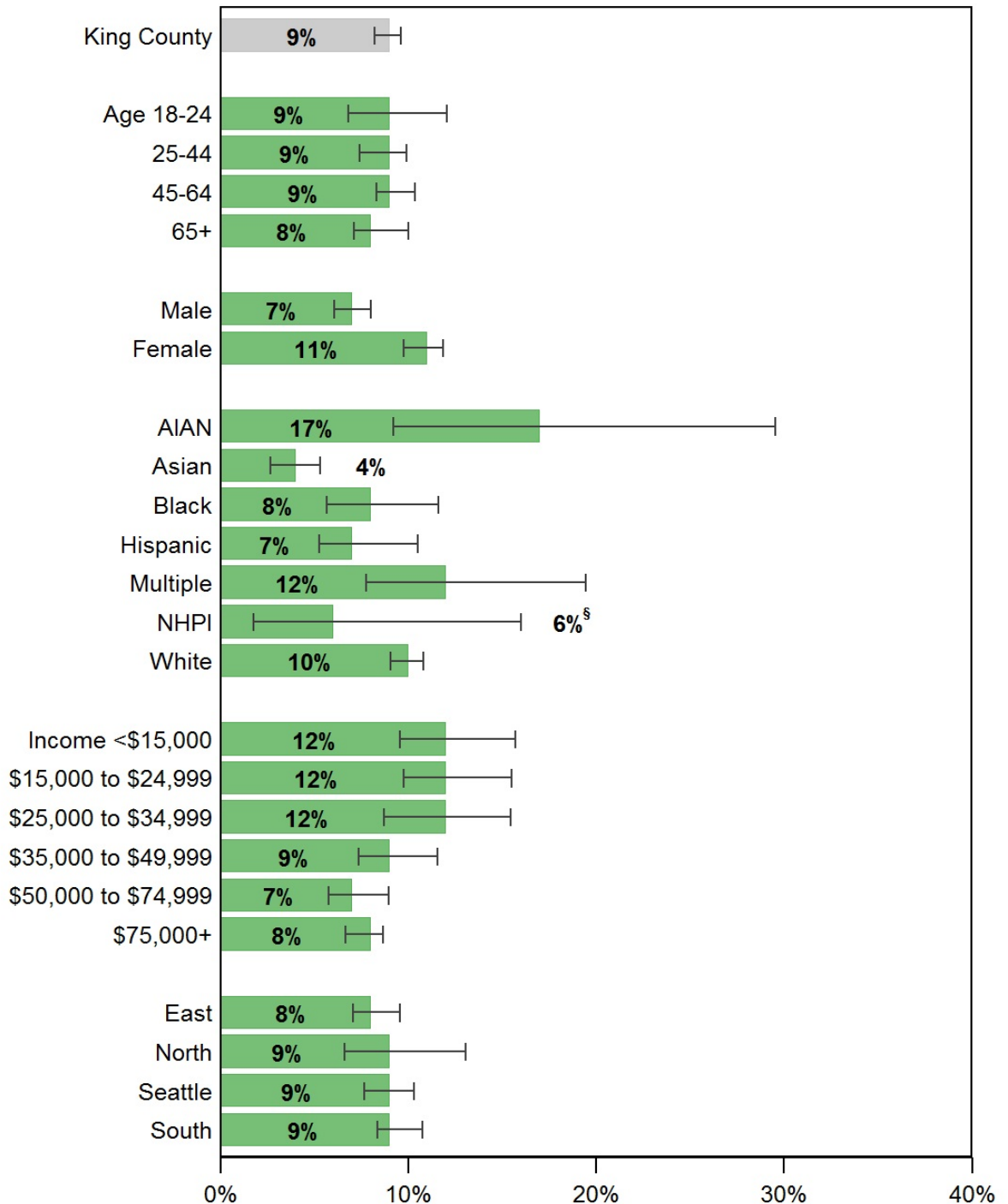
* Too few cases to protect confidentiality and/or report reliable rates.

§ Too few cases to meet precision standard, interpret with caution.

Persons of Hispanic ethnicity can be of any race and are included in the racial categories.

Asthma (adults)

King County, 2009-2013 average



Source: Behavioral Risk Factor Surveillance System.

Prepared by Public Health - Seattle & King County, APDE, 12/2014.

|-----| Confidence interval shows range that includes true value 95% of the time.

* Too few cases to protect confidentiality and/or report reliable rates.

§ Too few cases to meet precision standard, interpret with caution.

Persons of Hispanic ethnicity can be of any race and are included in the racial categories.

Asthma (adults) by comparison areas

There is no Healthy People 2020 Objective for asthma (adults).

	Latest Available Year	Percent	Lower CI	Upper CI
United States	2010	9	N/A	N/A
WA State	2010	10	9	10
King County	2013	9	8	11

Notes:

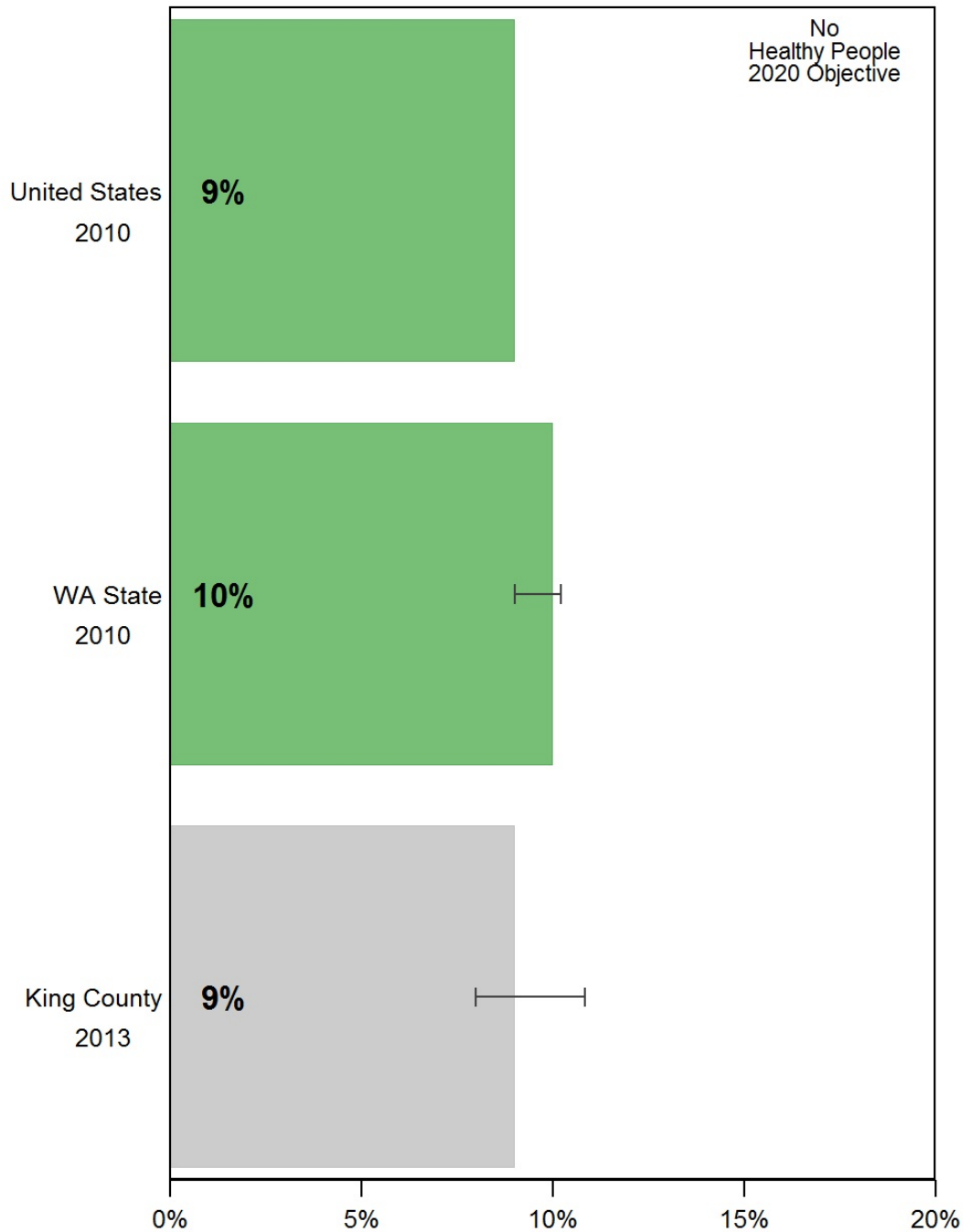
Source: Behavioral Risk Factor Surveillance System.

Prepared by Public Health - Seattle & King County, APDE, 12/2014.

N/A: Not available.

CI is 95% Confidence Interval.

Asthma (adults) by comparison areas



Source: Behavioral Risk Factor Surveillance System.
Prepared by Public Health - Seattle & King County, APDE, 12/2014.
|-----| Confidence interval shows range that includes true value 95% of the time.

Asthma (adults) by health reporting areas, King County, 2009-2013 average

	Percent	Lower CI	Upper CI
King County (adults age 18+)	9	8	10
Auburn	12	8	18
..Auburn-North	9	5	14
..Auburn-South	17	9	29
Bear Creek/Carnation/Duvall	8	5	13
Bellevue	7	5	9
..Bellevue-Central	9	5	15
..Bellevue-NE	5	3	8
..Bellevue-South	8	5	14
..Bellevue-West	5 §	3 §	9 §
Black Diamond/Enumclaw/SE County	13	8	19
Bothell/Woodinville	13 §	7 §	24 §
Burien	12	8	18
Covington/Maple Valley	8	5	12
Des Moines/Normandy Park	8	4	13
East Federal Way	5	3	9
Fairwood	8 §	3 §	19 §
Federal Way	10	7	15
..Fed Way-Central/Military Rd	12	7	18
..Fed Way-Dash Point/Woodmont	8 §	4 §	16 §
Issaquah	10	6	17
Kenmore/LFP	11 §	6 §	20 §
Kent	9	7	13
..Kent-East	11 §	6 §	20 §
..Kent-SE	10	6	16
..Kent-West	6 §	3 §	11 §
Kirkland	10	7	14
..Kirkland	11	7	18
..Kirkland North	8	5	12
Mercer Isle/Pt Cities	6	4	10
Newcastle/Four Creeks	6	3	10
North Highline	12 §	4 §	30 §
Redmond	9	6	14
Renton	11	8	15
..Renton-East	10 §	5 §	19 §
..Renton-North	9	6	16
..Renton-South	12	7	19
Sammamish	9	6	13
SeaTac/Tukwila	5	3	8
Seattle	9	8	10
..Ballard	15	9	23
..Beacon/Gtown/S.Park	10 §	5 §	18 §
..Capitol Hill/E.lake	7	4	11
..Central Seattle	10	5	17
..Delridge	13	8	20
..Downtown	8	5	13
..Fremont/Greenlake	5	3	8
..NE Seattle	7	4	11
..North Seattle	8	5	13
..NW Seattle	12	7	20
..QA/Magnolia	7	4	13
..SE Seattle	7 §	4 §	13 §
..West Seattle	8	5	11
Shoreline	6	4	9
Snoqualmie/North Bend/Skykomish	7 §	4 §	13 §
Vashon Island	3 §	1 §	7 §

Comparisons:

Higher than King County rate (yellow)

Lower than King County rate (green)

Notes:

Source: Behavioral Risk Factor Surveillance System.

Prepared by Public Health - Seattle & King County, APDE, 12/2014.

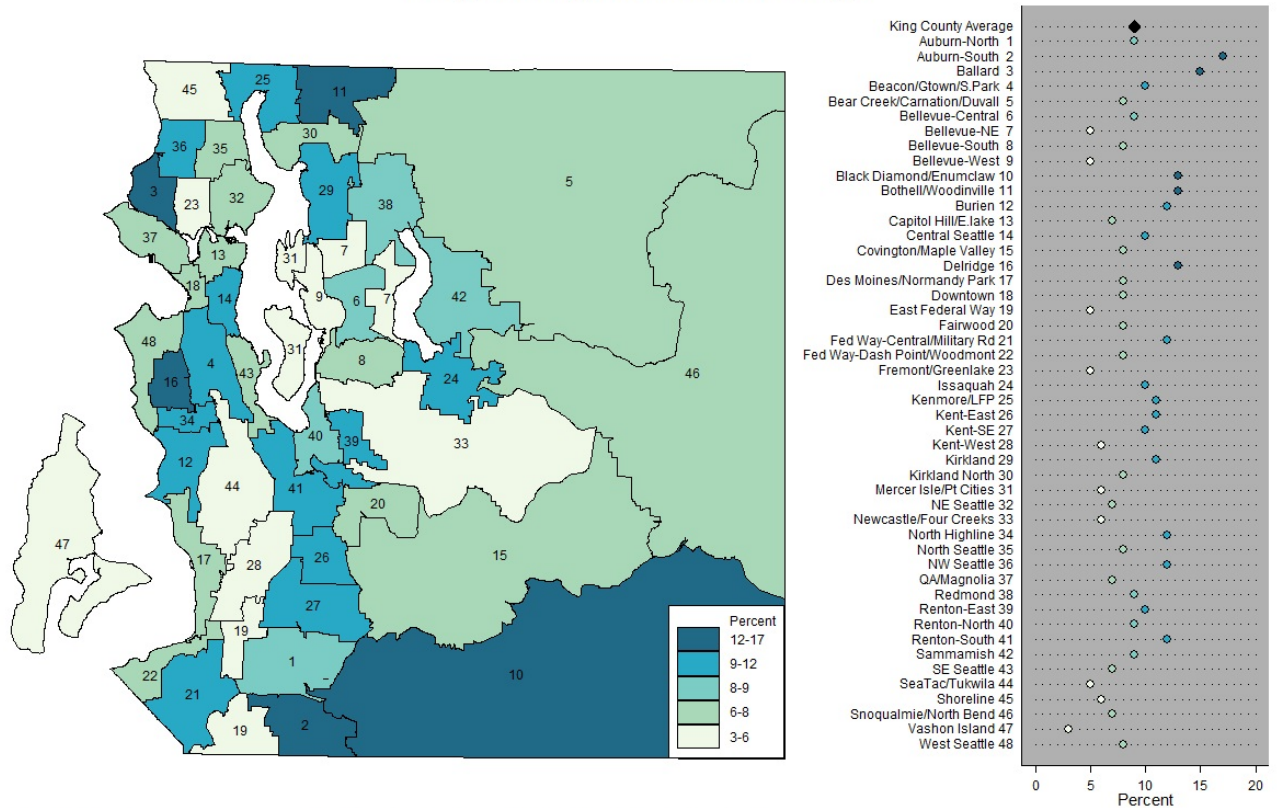
CI is 95% Confidence Interval.

* Too few cases to protect confidentiality and/or report reliable rates.

§ Too few cases to meet precision standard, interpret with caution.

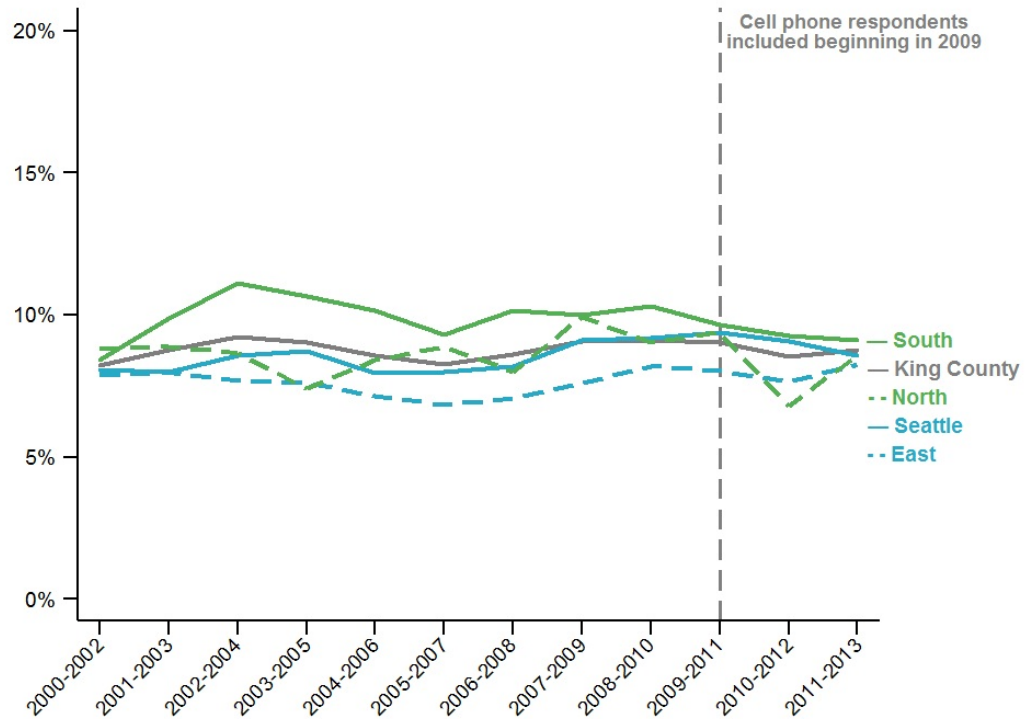
Persons of Hispanic ethnicity can be of any race and are included in the racial categories.

Asthma (adults) by health reporting areas King County, 2009-2013 average



Note: HRA labels on the map match the chart on the right, listed in alphabetical order
Source: Behavioral Risk Factor Surveillance System.
Prepared by Public Health - Seattle & King County, APDE, 12/2014.

Asthma (adults) King County, 2000-2013, three-year rolling averages



Source: Behavioral Risk Factor Surveillance System.
Prepared by Public Health - Seattle & King County, APDE, 12/2014.

Current asthma among children
King County, 2009-2013 average

Ever been told by a doctor, nurse or other health professional to have asthma and still have asthma

Source: Behavioral Risk Factor Surveillance System

Most recent data (2013): 5 cases per 100 in King County

	Percent	Lower CI	Upper CI
King County	7	5	9
Age			
0-4	1 ^s	1	3
5-9	8	5	12
10-17	10	8	13
Gender			
Female	5	4	8
Male	8	6	11
Race/Ethnicity			
AIAN	*	*	*
Asian	9 ^s	4	17
Black	11 ^s	5	21
Hispanic	6 ^s	3	11
Multiple	8 ^s	4	15
NHPI	*	*	*
White	6	5	7
Household Income			
<\$15,000	10 ^s	4	22
\$15,000 - \$24,999	6 ^s	3	13
\$25,000 - \$34,999	4 ^s	2	8
\$35,000 - \$49,999	8 ^s	3	19
\$50,000 - \$74,999	5 ^s	2	10
\$75,000+	6	5	8
Region			
East	6	4	9
North	6	4	10
Seattle	8	5	12
South	6	4	9

Notes:

N/A: Not available

* Too few cases to protect confidentiality and/or report reliable rates

§ Too few cases to meet precision standard, interpret with caution

CI is 95% Confidence Interval

Percent = Percent of children age 0-17 with current asthma

Prepared By: Public Health - Seattle & King County;
 Assessment, Policy Development, & Evaluation, 1/2015

Current asthma among children by comparison areas

Source: Behavioral Risk Factor Surveillance System; National Health Interview Survey

There is no Healthy People 2020 Objective for child asthma prevalence.

	Latest Available Year	Percent	Lower CI	Upper CI
United States (36 state total)	2010-2012	9	9	10
Washington State	2009-2010	7	6	7
King County	2013	5	3	6

Notes:

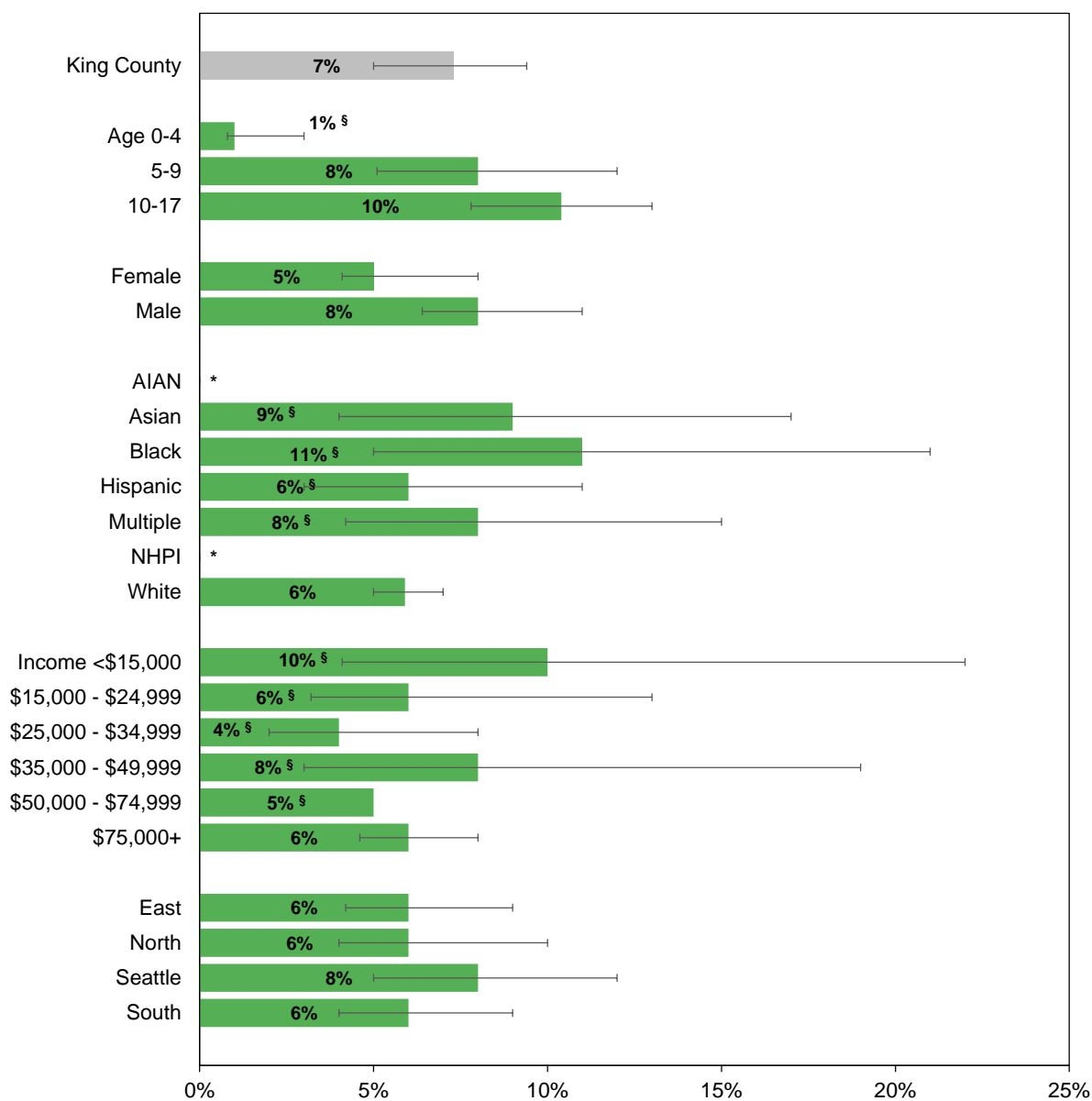
N/A: Not available

CI is 95% Confidence Interval

Percent = Percent of children age 0-17 with current asthma

Prepared By: Public Health - Seattle & King County;
Assessment, Policy Development, & Evaluation, 1/2015

Current asthma among children age 0-17, King County, 2009-2013 average



Source: Behavioral Risk Factor Surveillance System

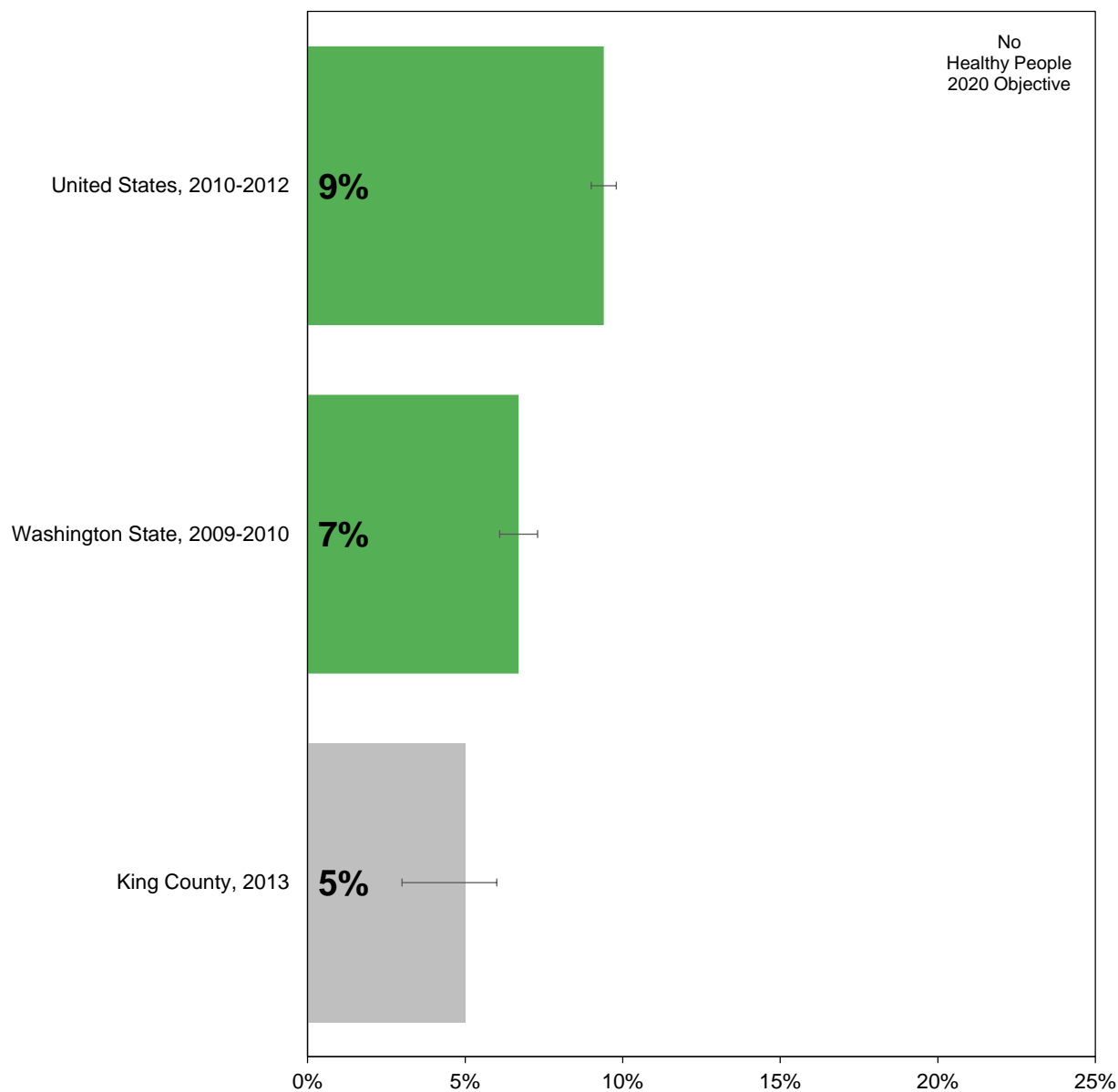
Prepared by: Public Health Seattle & King County, Assessment, Policy Development, & Evaluation, 1/2015

[-----]: Confidence interval shows range that includes true value 95% of the time

* Too few cases to protect confidentiality and/or report reliable rates

§ Too few cases to meet precision standard, interpret with caution

Current asthma among children by comparison areas



Source: Behavioral Risk Factor Surveillance System; National Health Interview Survey

Prepared by: Public Health Seattle & King County, Assessment, Policy Development, & Evaluation, 1/2015

|-----|: Confidence interval shows range that includes true value 95% of the time

Diabetes (Adults)

Diabetes (Adults)

- Most recent data (2013): 6% or about 98,500 King County adults age 18+.
- Trend over time: 2000-13: rising
- Description: Ever told by doctor, nurse, or other health professional to have diabetes (does not include diabetes during pregnancy or pre-diabetes)

Diabetes (adults), King County, 2009-2013 average

	Percent	Lower CI	Upper CI
King County (adults age 18+)	7	6	7
AGE			
18-24	0 §	0 §	1 §
25-44	2	2	3
45-64	9	8	10
65+	18	17	21
GENDER			
Male	7	7	8
Female	6	5	7
RACE/ETHNICITY			
AIAN	18	10	31
Asian	7	5	9
Black	12	9	16
Hispanic	7	5	10
Multiple	7	4	11
NHPI	6 §	3 §	13 §
White	6	5	6
HOUSEHOLD INCOME			
<\$15,000	9	7	12
\$15,000 to \$24,999	10	8	12
\$25,000 to \$34,999	9	7	12
\$35,000 to \$49,999	7	6	9
\$50,000 to \$74,999	7	6	9
\$75,000+	4	4	5
REGION			
East	5	4	6
North	5	4	7
Seattle	5	4	6
South	10	8	11

Comparisons:

- Higher than King County rate (yellow)
- Lower than King County rate (green)

Notes:

Source: Behavioral Risk Factor Surveillance System.

Prepared by Public Health - Seattle & King County, APDE, 12/2014.

CI is 95% Confidence Interval.

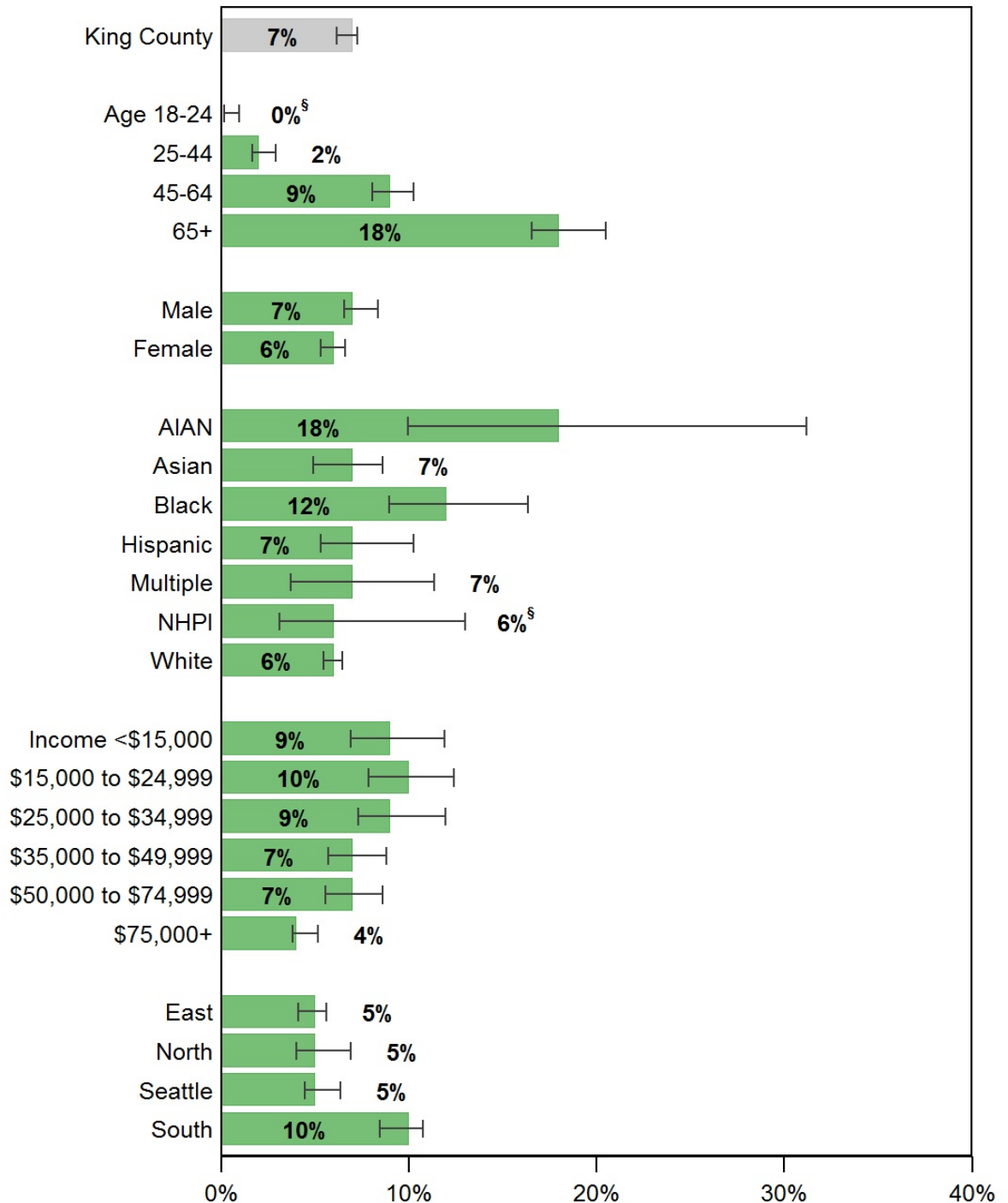
* Too few cases to protect confidentiality and/or report reliable rates.

§ Too few cases to meet precision standard, interpret with caution.

Persons of Hispanic ethnicity can be of any race and are included in the racial categories.

Diabetes (adults)

King County, 2009-2013 average



Source: Behavioral Risk Factor Surveillance System.

Prepared by Public Health - Seattle & King County, APDE, 12/2014.

-----| Confidence interval shows range that includes true value 95% of the time.

* Too few cases to protect confidentiality and/or report reliable rates.

§ Too few cases to meet precision standard, interpret with caution.

Persons of Hispanic ethnicity can be of any race and are included in the racial categories.

Diabetes (adults) by comparison areas

There is no Healthy People 2020 Objective for diabetes (adults).

	Latest Available Year	Percent	Lower CI	Upper CI
United States	2012	10	N/A	N/A
WA State	2012	9	8	9
King County	2013	6	5	8

Notes:

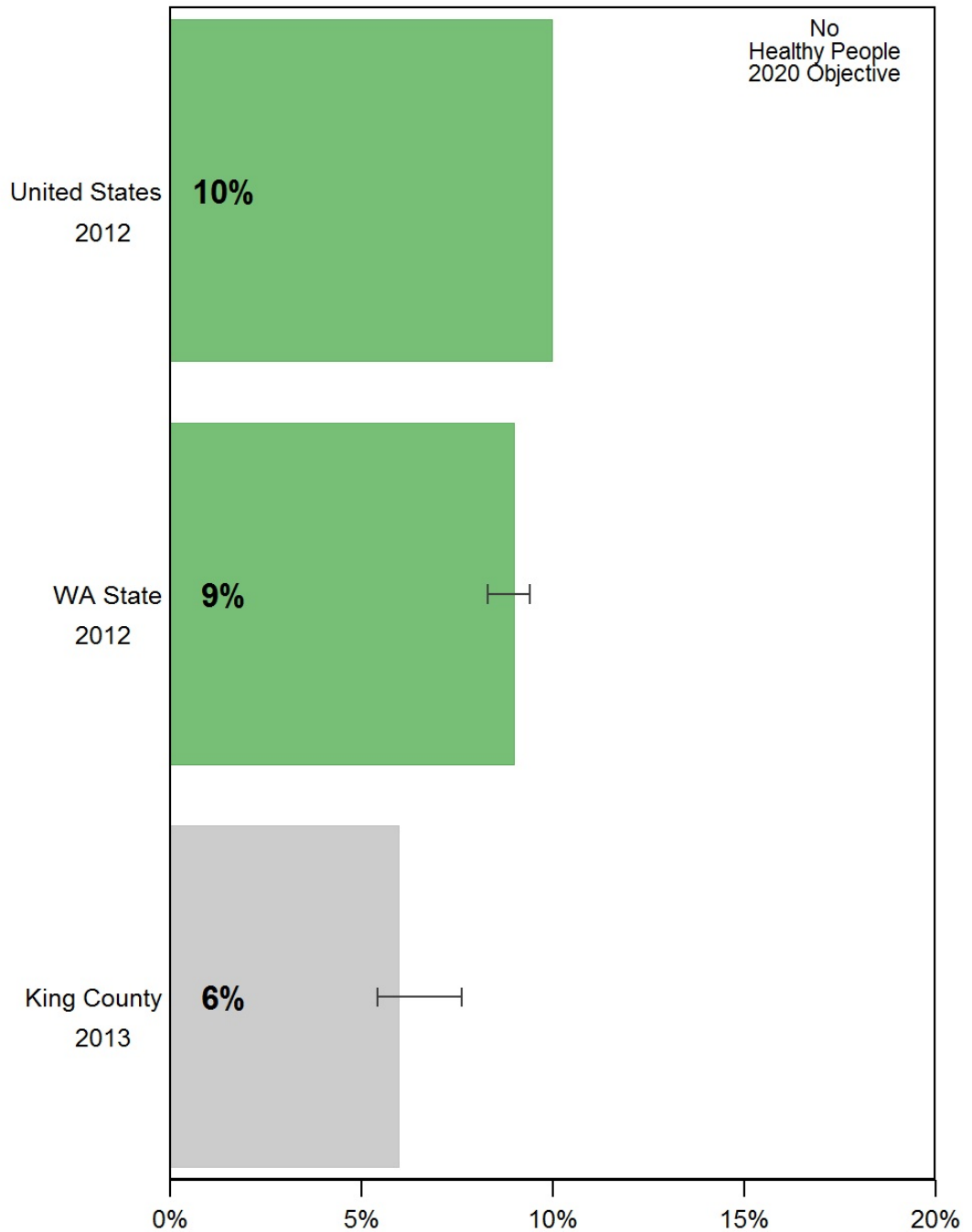
Source: Behavioral Risk Factor Surveillance System.

Prepared by Public Health - Seattle & King County, APDE, 12/2014.

N/A: Not available.

CI is 95% Confidence Interval.

Diabetes (adults) by comparison areas



Source: Behavioral Risk Factor Surveillance System.
Prepared by Public Health - Seattle & King County, APDE, 12/2014.
|-----| Confidence interval shows range that includes true value 95% of the time.

Diabetes (adults) by health reporting areas, King County, 2009-2013 average

	Percent	Lower CI	Upper CI
King County (adults age 18+)	7	6	7
Auburn	16	11	21
..Auburn-North	10	7	15
..Auburn-South	24	15	35
Bear Creek/Carnation/Duvall	5	3	8
Bellevue	5	4	6
..Bellevue-Central	6	3	9
..Bellevue-NE	6	3	9
..Bellevue-South	5 §	3 §	9 §
..Bellevue-West	3	2	5
Black Diamond/Enumclaw/SE County	8	6	12
Bothell/Woodinville	6	3	9
Burien	8	5	12
Covington/Maple Valley	8	5	11
Des Moines/Normandy Park	10	6	17
East Federal Way	9 §	4 §	17 §
Fairwood	9	5	14
Federal Way	11	8	16
..Fed Way-Central/Military Rd	14	9	21
..Fed Way-Dash Point/Woodmont	6	4	11
Issaquah	3 §	2 §	6 §
Kenmore/LFP	3	2	5
Kent	10	8	13
..Kent-East	14 §	7 §	25 §
..Kent-SE	9	6	13
..Kent-West	9	5	16
Kirkland	4	3	6
..Kirkland	4	2	6
..Kirkland North	5	3	8
Mercer Isle/Pt Cities	5	3	7
Newcastle/Four Creeks	7	4	11
North Highline	12 §	5 §	29 §
Redmond	6	4	11
Renton	9	7	12
..Renton-East	6 §	3 §	12 §
..Renton-North	9	5	15
..Renton-South	10	6	15
Sammamish	4	2	6
SeaTac/Tukwila	8	5	14
Seattle	5	4	6
..Ballard	7 §	4 §	13 §
..Beacon/Gtown/S.Park	8 §	4 §	15 §
..Capitol Hill/E.lake	6 §	3 §	13 §
..Central Seattle	3 §	2 §	5 §
..Delridge	9	5	16
..Downtown	5 §	3 §	9 §
..Fremont/Greenlake	3 §	1 §	5 §
..NE Seattle	5	3	8
..North Seattle	4 §	2 §	8 §
..NW Seattle	6	4	10
..QA/Magnolia	4 §	2 §	9 §
..SE Seattle	7	4	12
..West Seattle	5	3	8
Shoreline	7	5	10
Snoqualmie/North Bend/Skykomish	7	4	11
Vashon Island	4 §	2 §	10 §

Comparisons:

- Higher than King County rate (yellow)
- Lower than King County rate (green)

Notes:

Source: Behavioral Risk Factor Surveillance System.

Prepared by Public Health - Seattle & King County, APDE, 12/2014.

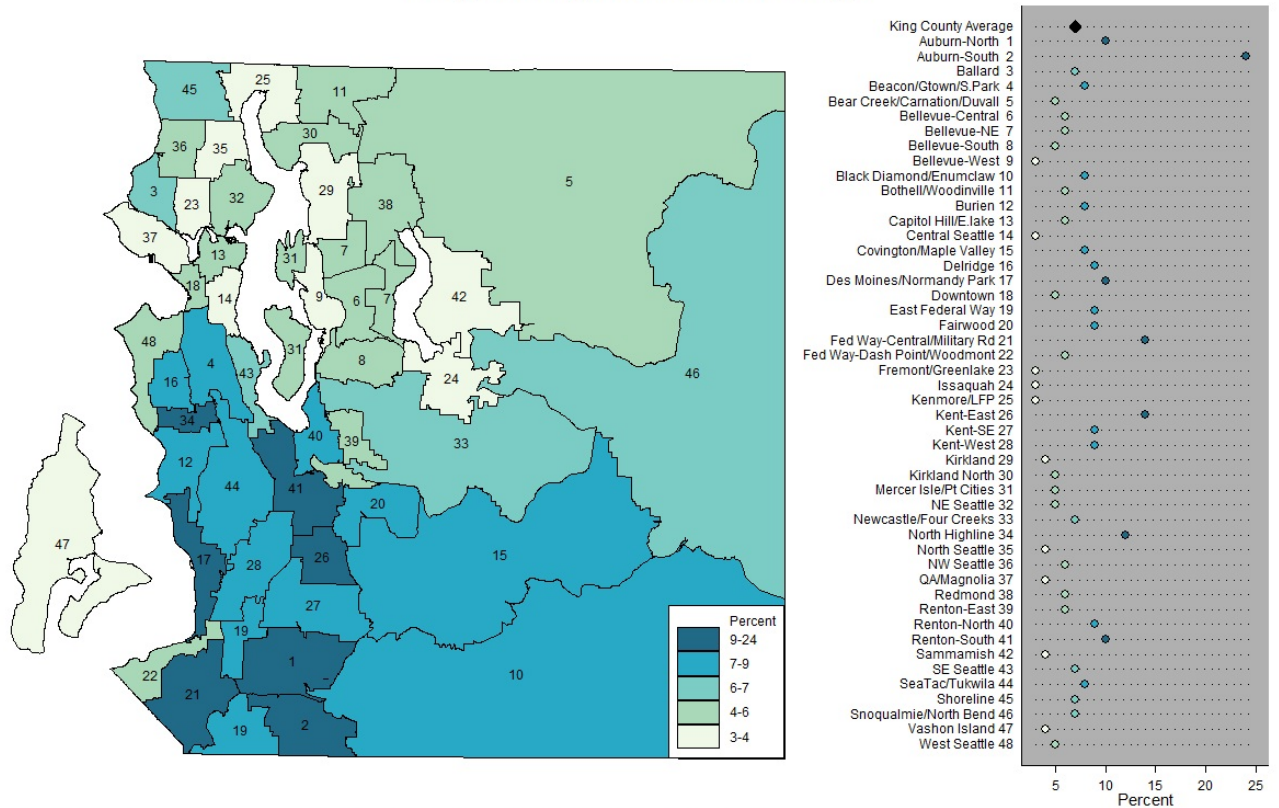
CI is 95% Confidence Interval.

* Too few cases to protect confidentiality and/or report reliable rates.

§ Too few cases to meet precision standard, interpret with caution.

Persons of Hispanic ethnicity can be of any race and are included in the racial categories.

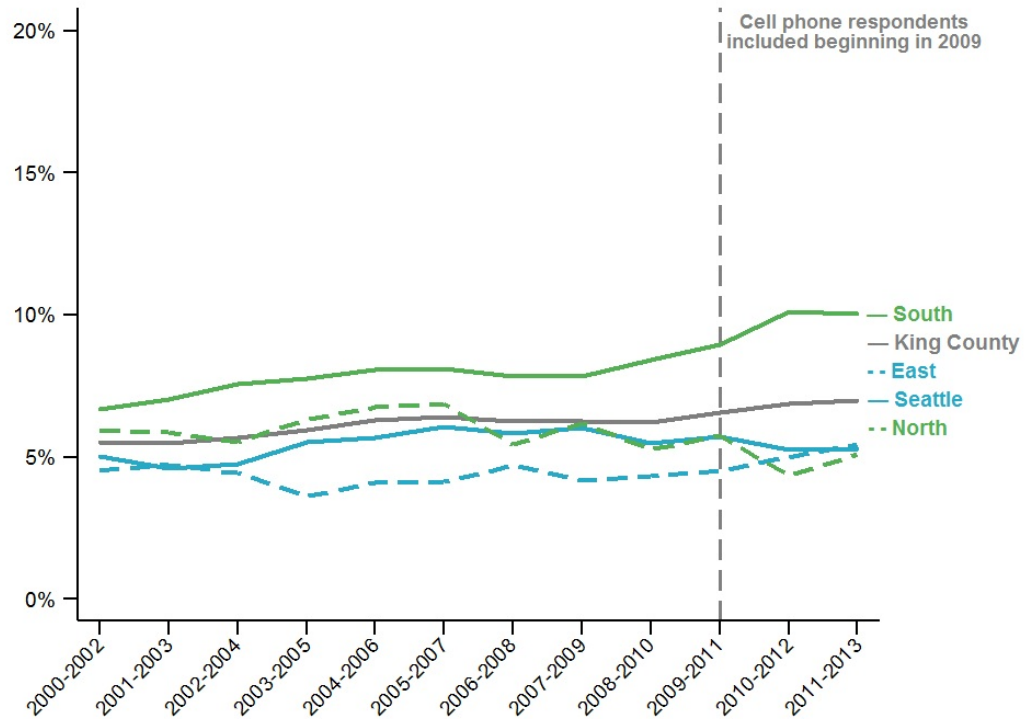
Diabetes (adults) by health reporting areas **King County, 2009-2013 average**



Note: HRA labels on the map match the chart on the right, listed in alphabetical order
Source: Behavioral Risk Factor Surveillance System.
Prepared by Public Health - Seattle & King County, APDE, 12/2014.

Diabetes (adults)

King County, 2000-2013, three-year rolling averages



Source: Behavioral Risk Factor Surveillance System.
Prepared by Public Health - Seattle & King County, APDE, 12/2014.

Produced by the
Assessment, Policy Development & Evaluation Unit
Public Health - Seattle & King County
12/14

King County
Hospitals
for a Healthier
Community

Diabetes (School-Age)

Diabetes (School-Age)

- Most recent data (2010): 3% of King County youth attending public schools in the 8th, 10th and 12th grades.
- Trend over time: 2006-10: falling
- Description: Ever told by doctor to have diabetes

Diabetes (school-age), King County, 2008 and 2010

	Percent	Lower CI	Upper CI
King County (school-age youth in 8th, 10th and 12th grades)	4	4	4
GRADE			
Grade 8	4	3	4
Grade 10	4	4	5
Grade 12	4	3	4
GENDER			
Male	5	4	5
Female	3	3	4
RACE/ETHNICITY			
AIAN	5	3	8
Asian	4	3	4
Black	7	5	9
Hispanic	5	4	6
Multiple	4	3	5
NHPI	6	4	8
White	3	3	4
Other	4	4	5
REGION			
East	4	3	4
North	3	2	4
Seattle	5	4	6
South	4	4	4

Comparisons:

- Higher than King County rate (yellow)
- Lower than King County rate (green)

Notes:

Source: Healthy Youth Survey.

Prepared by Public Health - Seattle & King County, APDE, 12/2014.

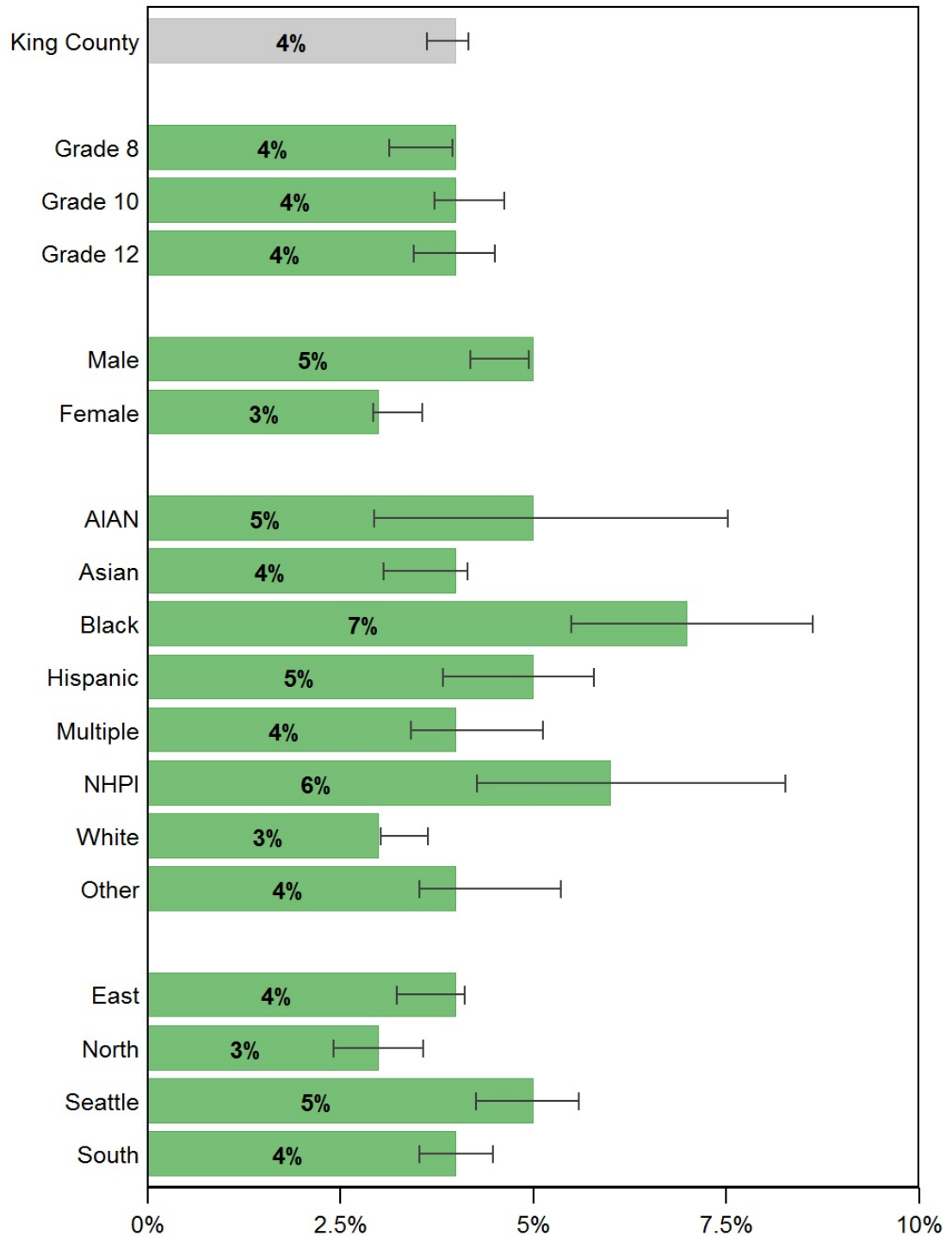
CI is 95% Confidence Interval.

* Too few cases to protect confidentiality and/or report reliable rates.

§ Too few cases to meet precision standard, interpret with caution.

Data by income or poverty level not available.

Diabetes (school-age) King County, 2008 and 2010



Source: Healthy Youth Survey.

Prepared by Public Health - Seattle & King County, APDE, 12/2014.

|-----| Confidence interval shows range that includes true value 95% of the time.

* Too few cases to protect confidentiality and/or report reliable rates.

§ Too few cases to meet precision standard, interpret with caution.

Data by income or poverty level not available.

Diabetes (school-age) by comparison areas

There is no Healthy People 2020 Objective for diabetes (school-age).

	Latest Available Year	Percent	Lower CI	Upper CI
United States	N/A	N/A	N/A	N/A
WA State	2010	4	3	4
King County	2010	3	3	4

Notes:

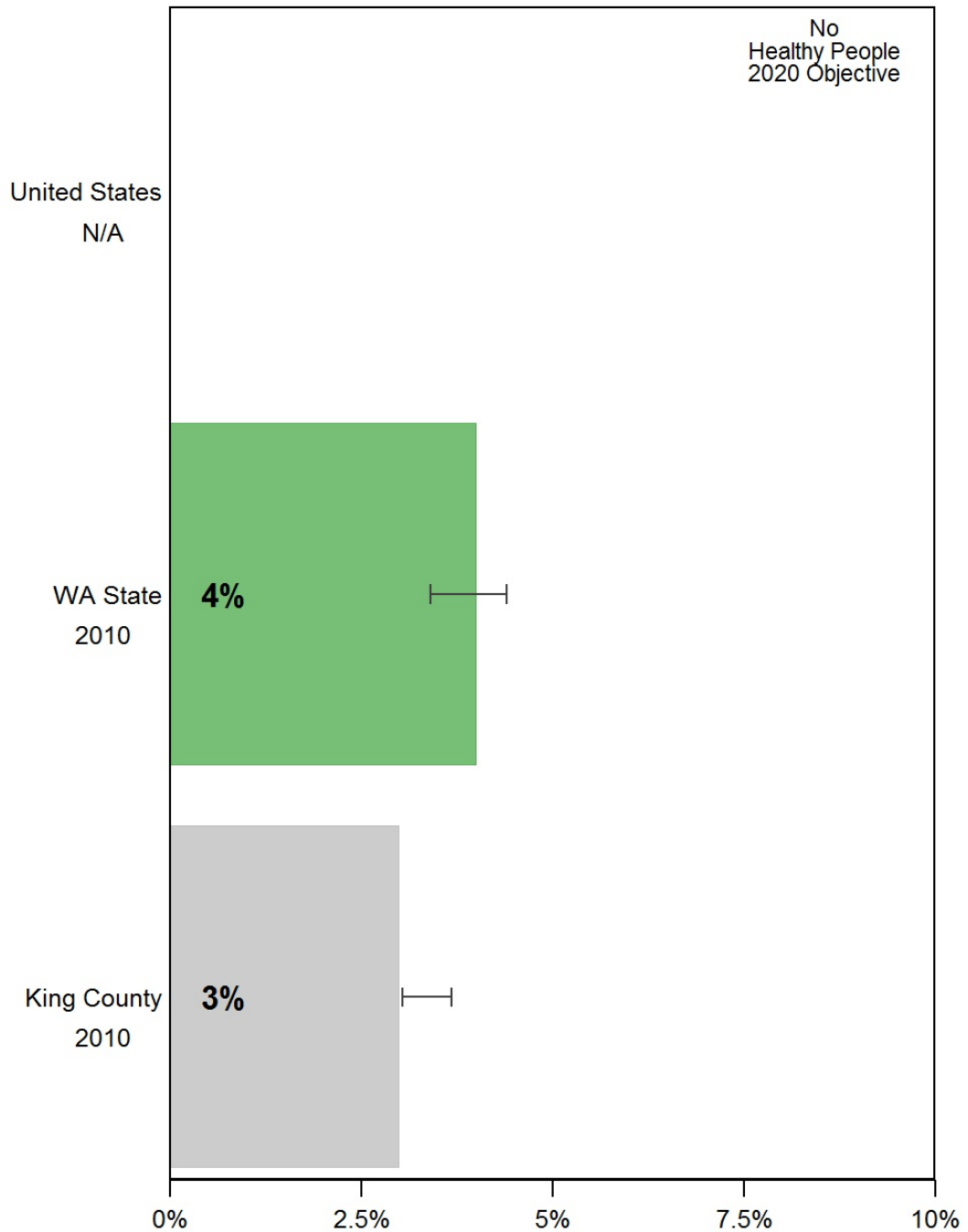
Source: Healthy Youth Survey.

Prepared by Public Health - Seattle & King County, APDE, 12/2014.

N/A: Not available.

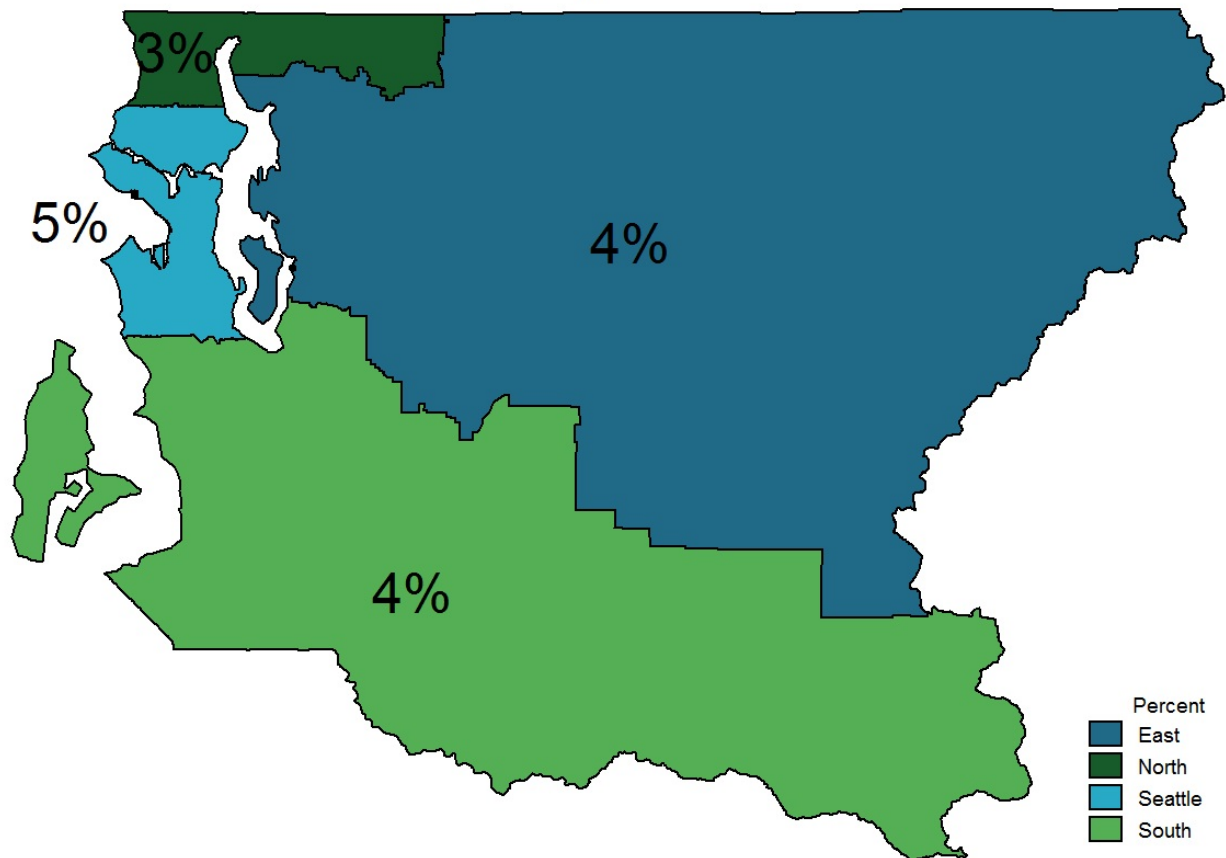
CI is 95% Confidence Interval.

Diabetes (school-age) by comparison areas



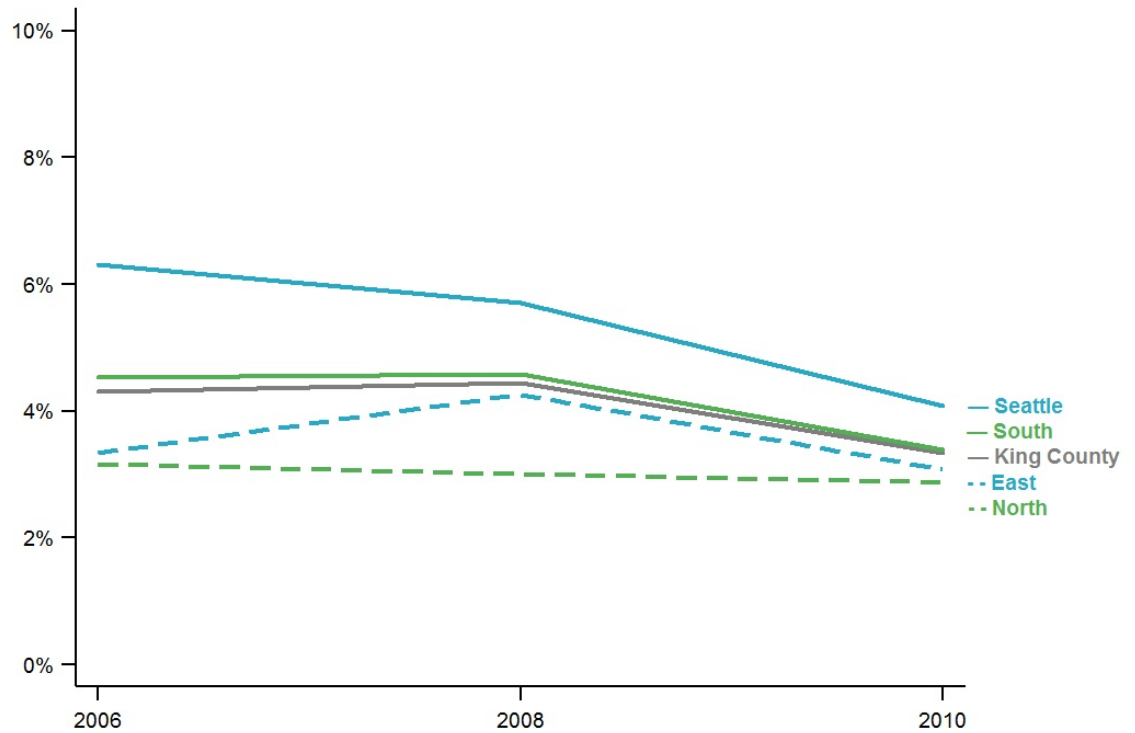
Source: Healthy Youth Survey.
Prepared by Public Health - Seattle & King County, APDE, 12/2014.
|-----| Confidence interval shows range that includes true value 95% of the time.

**Diabetes (school-age) by regions
King County, 2008 and 2010**



Source: Healthy Youth Survey.
Prepared by Public Health - Seattle & King County, APDE, 12/2014.
N/A: Not available.

Diabetes (school-age) King County, 2004-2010



Source: Healthy Youth Survey.
Prepared by Public Health - Seattle & King County, APDE, 12/2014.

Produced by the
[Assessment, Policy Development & Evaluation Unit](#)
[Public Health - Seattle & King County](#)
12/14

King County
Hospitals
for a **Healthier**
Community

HIV prevalence King County, 2013

HIV Prevalence is the rate of persons who are seropositive for the human immunodeficiency virus.

Source: HIV/AIDS Registry data, Prevention Division, Public Health - Seattle & King County

Most recent data (2013): 326.9 cases per 100,000 in King County, including 6,995 cases.

	Rate	Lower CI	Upper CI	Count
King County (all ages)	326.9	319.3	334.8	6995
Age				
<20	8.4	6.0	11.5	39
20-29	164.6	149.8	180.4	456
30-39	405.2	382.9	428.5	1230
40-49	782.7	751.2	815.2	2320
50-59	766.8	734.7	800.1	2135
60+	242.1	225.8	259.3	815
Gender				
Female	79.0	73.6	84.8	814
Male	572.4	558.1	587.1	6181
Race/Ethnicity				
AIAN, NH	371.4	280.8	499.6	58
Asian, NH	79.8	70.0	90.7	247
Black, NH	1061.7	1004.5	1122.3	1321
Hispanic	581.0	539.7	627.5	845
Multiple, NH	279.0	234.1	338.1	154
NHPI, NH	166.8	107.7	364.0	26
White, NH	293.0	284.2	302.1	4344
Neighborhood poverty				
High	470.1	443.9	497.6	1243
Medium	254.1	245.6	262.9	3420
Low	77.2	69.7	85.5	400
Region				
East	65.2	58.5	72.5	350
North	132.9	113.6	154.9	177
Seattle	507.9	490.8	525.7	3420
South	145.0	136.5	153.9	1116

Notes:

N/A: Not available

* Too few cases to protect confidentiality and/or report reliable rates

§ Too few cases to meet precision standard, interpret with caution

CI is 95% Confidence Interval

Rate = HIV prevalent cases per 100,000 population, age-adjusted to the 2000 US population

Neighborhood poverty level and region estimates exclude the 28% of cases with no address.

NH: Non-Hispanic

Prepared By: Public Health - Seattle & King County;
Assessment, Policy Development, & Evaluation, 5/2014

HIV prevalence

King County, 2013

Source: HIV/AIDS Registry data, Prevention Division, Public Health - Seattle & King County

Health Reporting Area	Rate	Lower CI	Upper CI	Count
King County	326.9	319.3	334.8	6995
Auburn	105.2	81.5	134.4	68
Auburn-North	93.1	65.0	130.1	36
Auburn-South	123.9	84.3	178.7	32
Bear Creek/Carnation/Duvall	31.8	19.8	52.1	24
Bellevue	88.5	73.5	106.0	125
Bellevue-Central	133.3	97.2	179.7	46
Bellevue-NE	67.1	43.6	100.6	26
Bellevue-South	59.0	34.8	97.6	21
Bellevue-West	100.4	68.3	145.1	32
Black Diamond/Enumclaw/SE County	31.8	18.4	53.2	18
Bothell/Woodinville	81.9	54.5	119.7	29
Burien	238.1	197.0	285.8	121
Covington/Maple Valley	49.4	32.6	74.8	28
Des Moines/Normandy Park	173.4	132.8	223.5	65
East Federal Way	82.2	55.6	120.1	32
Fairwood	60.4	34.6	106.4	17
Federal Way	143.7	119.5	172.0	127
Fed Way-Central/Military Rd	120.3	93.2	153.9	68
Fed Way-Dash Pt	187.7	142.1	245.2	59
Issaquah	90.1	60.2	133.3	29
Kenmore/Lake Forest Park	125.1	91.2	168.6	47
Kent	171.5	148.9	197.3	210
Kent-East	119.0	86.5	162.5	45
Kent-SE	165.5	133.4	204.6	93
Kent-West	253.9	197.9	327.4	72
Kirkland	70.1	53.4	91.1	61
Kirkland	74.2	52.3	103.5	38
Kirkland North	63.4	39.8	99.1	23
Mercer Isle/Pt Cities	84.3	49.5	138.8	22
Newcastle/Four Creeks	33.3	17.3	63.5	13
North Highline	271.2	201.7	362.8	52
Redmond	85.5	62.9	115.4	49
Renton	156.9	134.8	182.0	183
Renton-East	108.5	74.6	156.8	34
Renton-North	211.1	163.8	269.5	69
Renton-South	155.0	122.5	194.1	80
Sammamish	43.2	26.2	75.5	22
SeaTac/Tukwila	324.3	275.6	381.1	161
Seattle	567.2	546.1	589.2	2813
Ballard	215.8	178.7	260.6	127
Beacon/Georgetown/S Park	436.2	375.0	505.3	185
Capitol Hill/Eastlake	1423.2	1316.9	1540.0	718
Central Seattle	978.6	890.9	1074.7	469
Delridge	498.1	423.4	586.0	160
Downtown	1400.6	1295.9	1534.0	704
Fremont/Greenlake	189.9	152.3	237.9	99
NE Seattle	152.3	122.5	188.2	95
North Seattle	250.2	207.1	302.0	123
NW Seattle	285.8	238.5	342.7	133
Queen Anne/Magnolia	320.1	277.0	370.5	208
SE Seattle	488.3	424.9	559.2	219
West Seattle	281.8	241.6	329.7	180
Shoreline	167.1	135.2	205.4	101
Snoqualmie/N.Bend/Skykomish	36.3	21.2	65.0	18
Vashon Island	168.1	97.4	291.1	21

Notes:

Higher than King County

Lower than King County

* Too few cases to protect confidentiality and/or report reliable rates

§ Too few cases to meet precision standard, interpret with caution

CI is 95% Confidence Interval

Rate = HIV prevalent cases per 100,000 population, age-adjusted to the 2000 US population

Neighborhood poverty level and region estimates exclude the 28% of cases with no address.

Prepared By: Public Health - Seattle & King County;

Assessment, Policy Development, & Evaluation, 1/2015

HIV prevalence by comparison areas

Source: Washington State Department of Health; HIV/AIDS Registry data, Prevention Division, Public Health - Seattle & King County

There is no Healthy People 2020 Objective for HIV Prevalence.

	Latest Available Year	Rate	Lower CI	Upper CI
United States	2010	282.2	N/A	N/A
Washington State	2013	166.1	N/A	N/A
King County	2013	326.9	319.3	334.8

Notes:

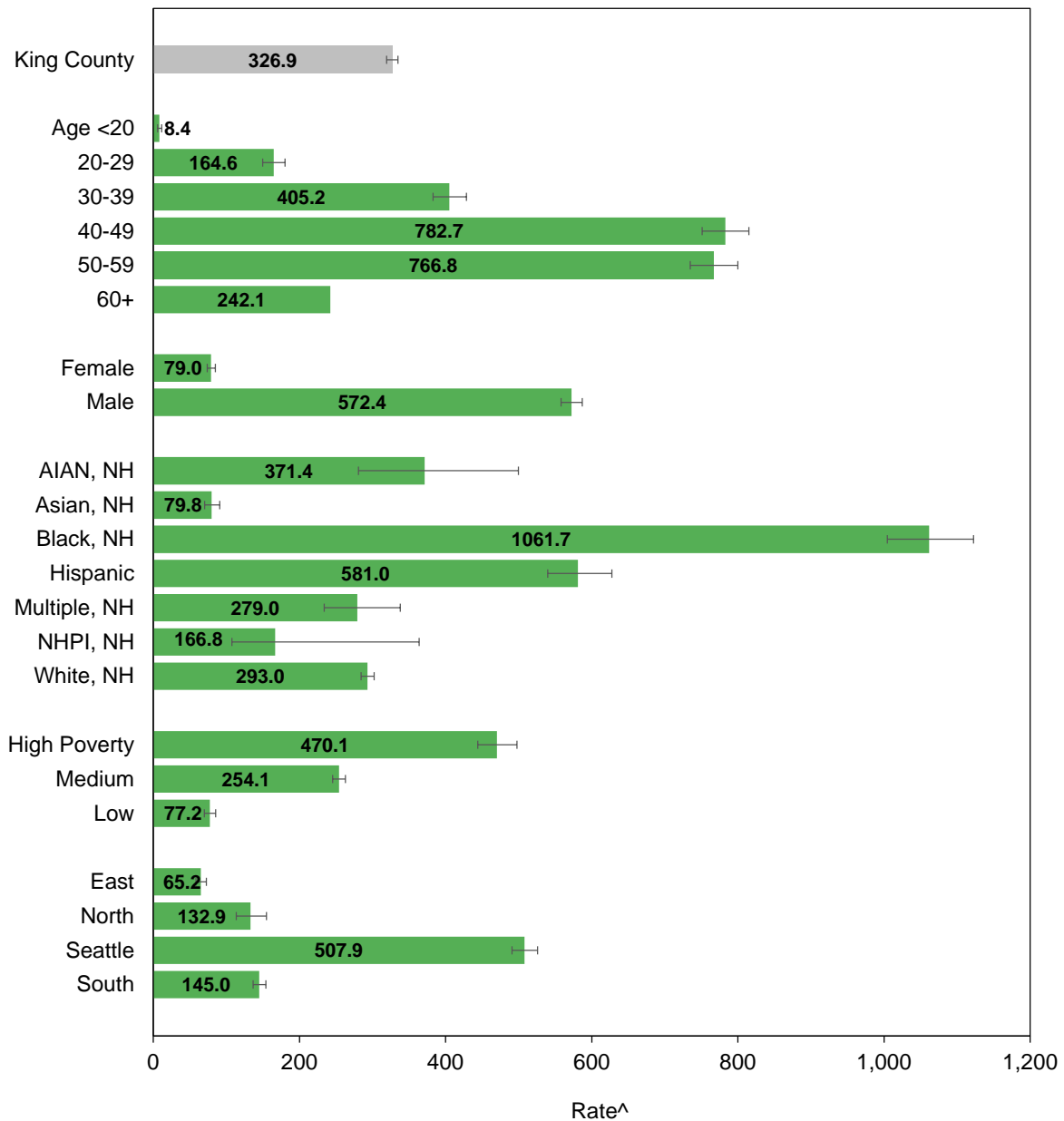
N/A: Not available

CI is 95% Confidence Interval

Rate = HIV prevalent cases per 100,000 population, age-adjusted to the 2000 US population

Prepared By: Public Health - Seattle & King County;
Assessment, Policy Development, & Evaluation, 1/2015

HIV prevalence, King County, 2013



Source: HIV/AIDS Registry data, Prevention Division, Public Health - Seattle & King County

Prepared by: Public Health Seattle & King County, Assessment, Policy Development, & Evaluation, 1/2015

^Rate = Cases per 100,000 population

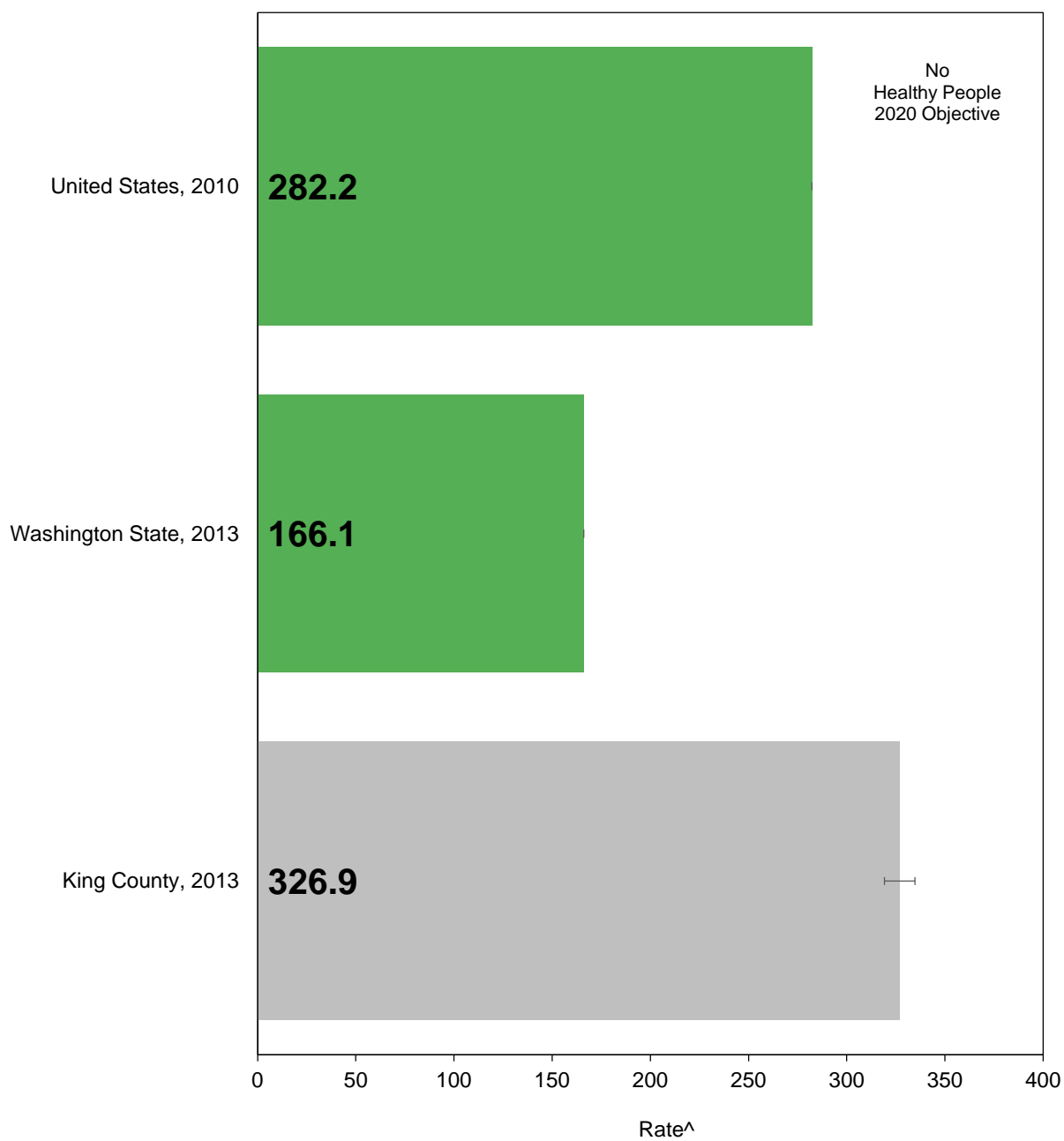
[-|-|-|]: Confidence interval shows range that includes true value 95% of the time

* Too few cases to protect confidentiality and/or report reliable rates

§ Too few cases to meet precision standard, interpret with caution

NH: Non-Hispanic

HIV prevalence by comparison areas



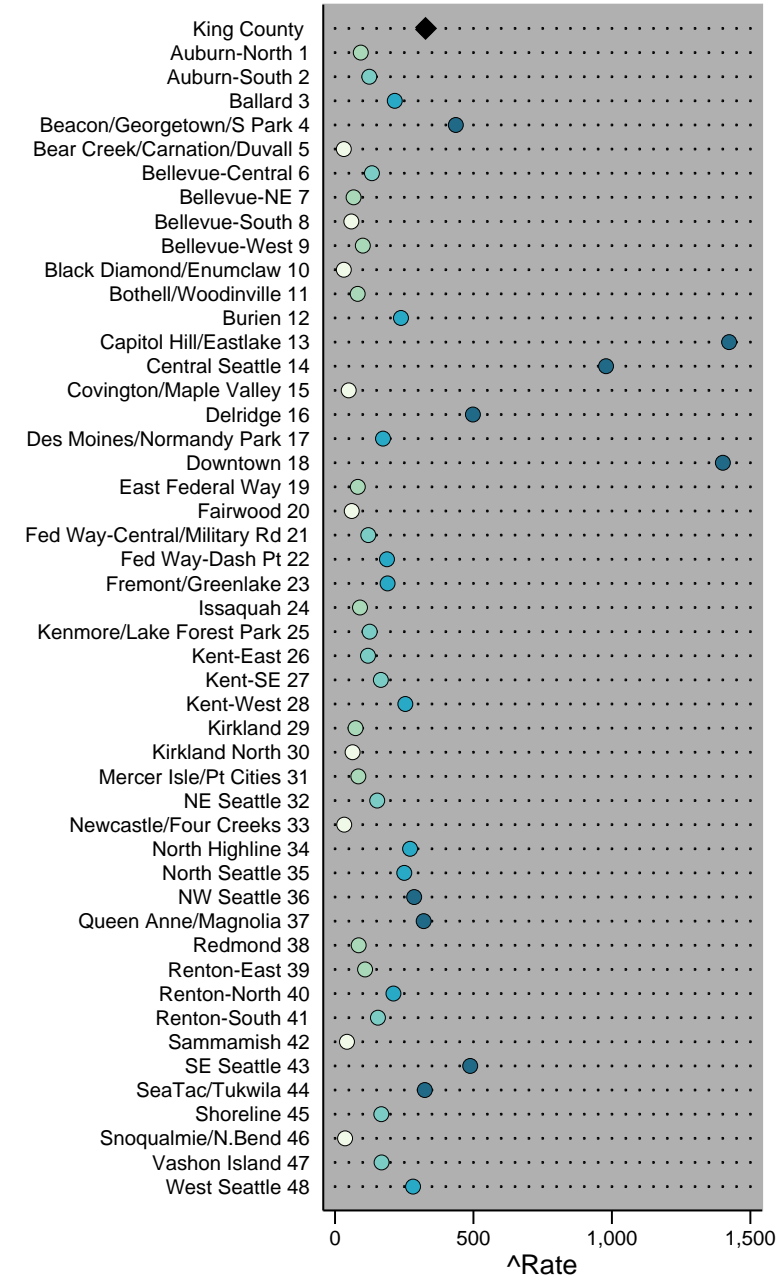
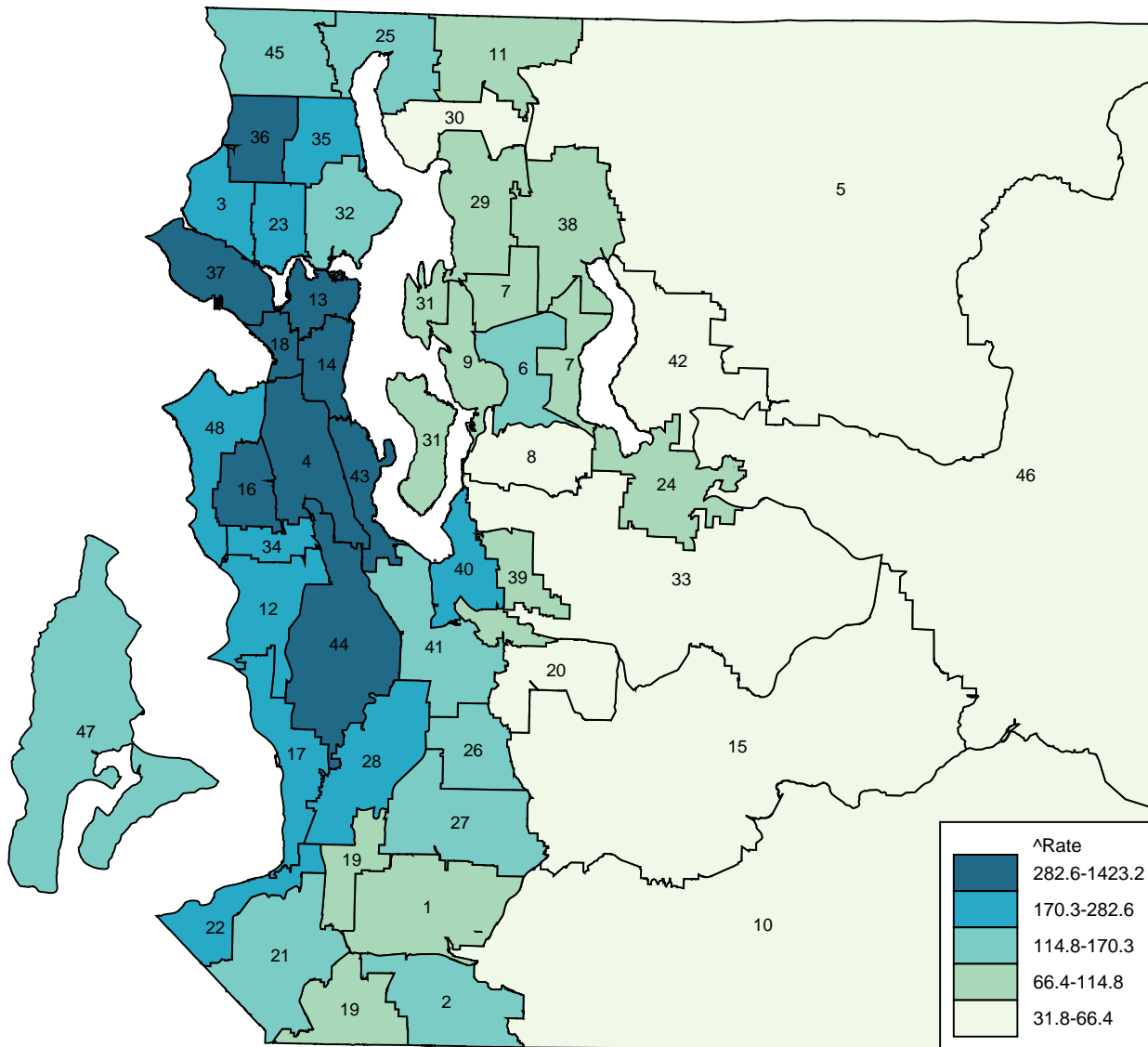
Source: HIV/AIDS Registry data, Prevention Division, Public Health -

Prepared by: Public Health Seattle & King County, Assessment, Policy Development, & Evaluation, 1/2015

^Rate = Cases per 100,000 population

|-----|: Confidence interval shows range that includes true value 95% of the time

HIV prevalence by health reporting areas, King County, 2013



Note: HRA labels on the map match the chart on the right, listed in alphabetical order
 Source: HIV/AIDS Registry data, Prevention Division, Public Health - Seattle & King County
 Prepared by Public Health - Seattle & King County, APDE on 11/4/14.
 ^Rate = cases per 100,000 population, age-adjusted to the 2000 US population.

Invasive colorectal cancer incidence, King County

King County, 2007-2011 average

Source: Washington State Cancer Registry

Most recent data (2011): 35.6 cases per 100,000 in King County, including 681 cases.

	Rate	Lower CI	Upper CI	Count per Year
King County (all ages)	37.3	36.1	38.7	691
Age				
<18	0.0	0.0	0.2	0
18-24	0.6 [§]	0.2	1.3	1
25-44	7.5	6.6	8.6	46
45-64	49.3	46.6	52.1	251
65+	192.2	183.8	200.9	393
Gender				
Female	33.6	32.0	35.3	341
Male	41.6	39.6	43.7	350
Race/Ethnicity				
AIAN	46.9	28.8	73.9	5
Asian	33.1	29.8	36.8	75
Black	46.6	40.0	54.2	41
Hispanic	26.9	20.2	35.4	16
Multiple	17.1	9.9	28.4	5
NHPI	43.5	20.8	92.3	3
White	37.2	35.8	38.6	555
Neighborhood Poverty Level				
High	40.9	37.1	44.9	90
Medium	37.2	35.7	38.9	443
Low	36.1	33.5	38.8	158
Region				
East	37.3	34.8	39.9	180
North	37.3	33.4	41.5	73
Seattle	36.3	34.0	38.8	193
South	38.3	36.1	40.5	248

Notes:

N/A: Not available

* Too few cases to protect confidentiality and/or report reliable rates

§ Too few cases to meet precision standard, interpret with caution

CI is 95% Confidence Interval

Rate = Cases of invasive colorectal cancer per 100,000 population, age-adjusted to the 2000 US population.

Prepared By: Public Health - Seattle & King County;
Assessment, Policy Development, & Evaluation, 1/2015

Invasive colorectal cancer incidence by comparison areas

Source: Surveillance, Epidemiology, and End Results Program; Washington State Cancer Registry

The Healthy People 2020 Objective is 38.6 cases per 100,000.

	Latest Available Year	Rate	Lower CI	Upper CI
United States	2011	39.3	N/A	N/A
Washington State	2011	37.3	35.8	38.8
King County	2011	35.7	33.0	38.6

Notes:

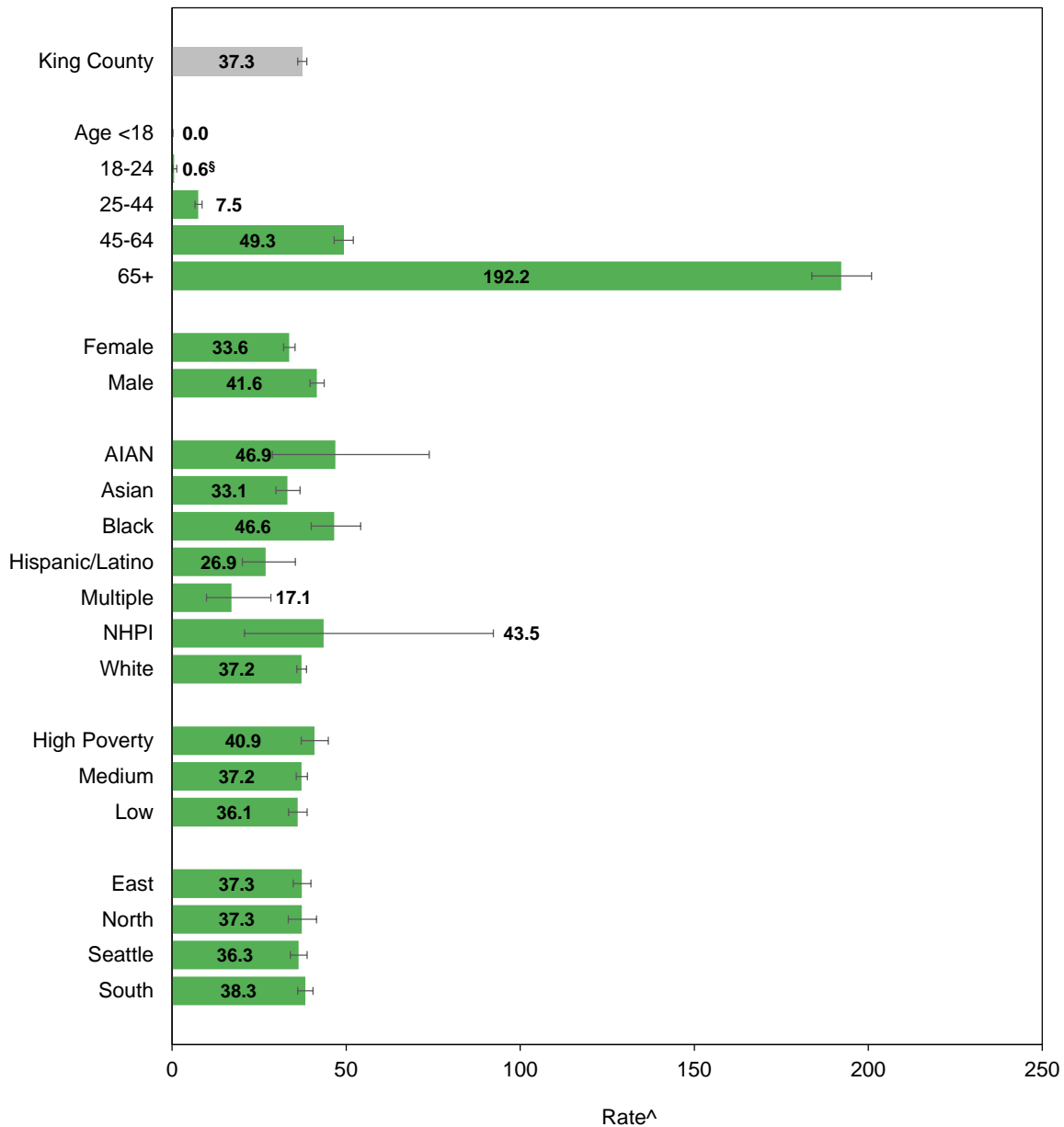
N/A: Not available

CI is 95% Confidence Interval

Rate = Cases of invasive colorectal cancer per 100,000 population, age-adjusted to the 2000 US population.

Prepared By: Public Health - Seattle & King County;
Assessment, Policy Development, & Evaluation, 1/2015

Invasive colorectal cancer incidence, King County, 2007-2011 average



Source: Washington State Cancer Registry

Prepared by: Public Health Seattle & King County, Assessment, Policy Development, & Evaluation, 1/2015

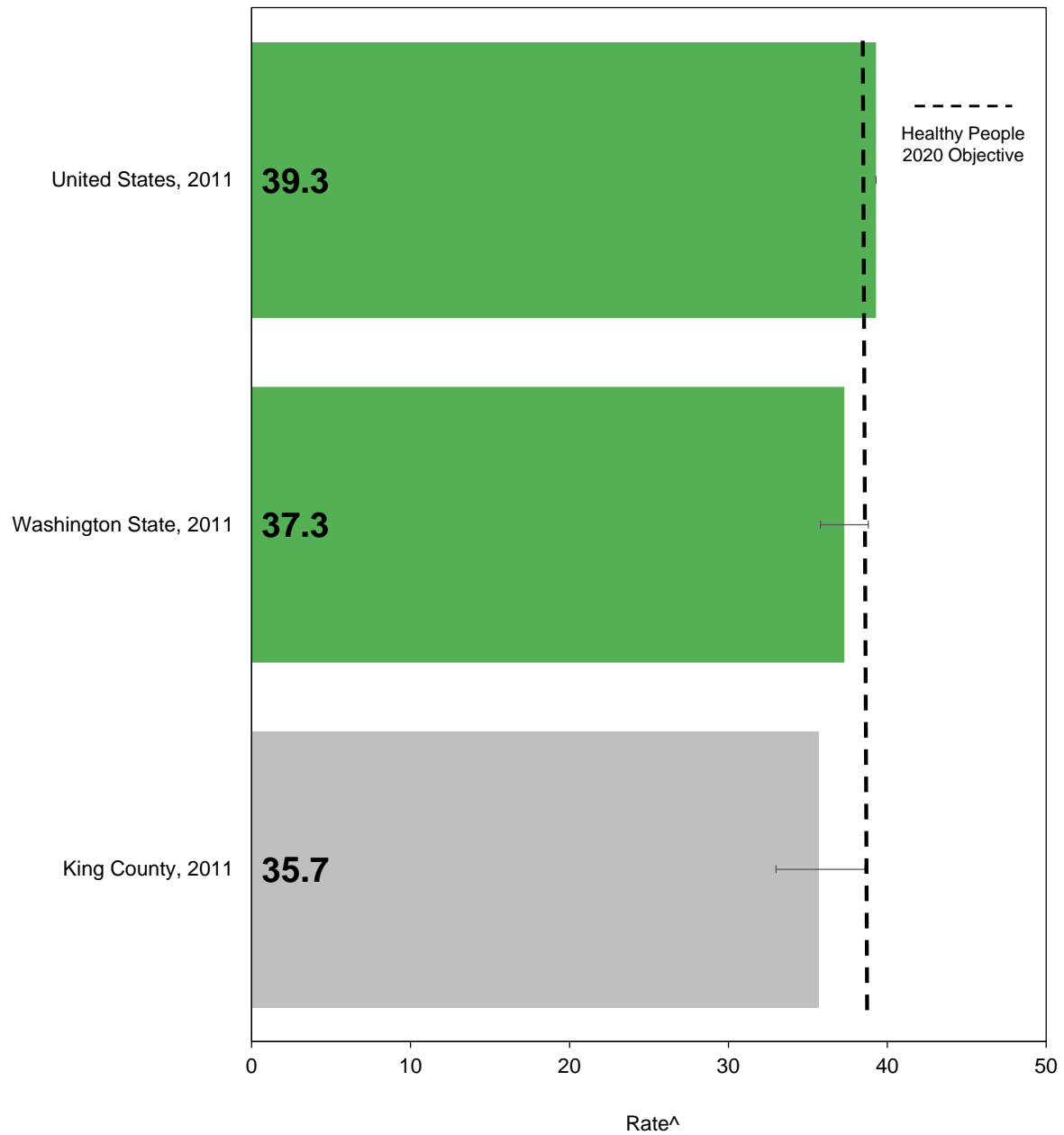
^Rate = Cases of invasive colorectal cancer per 100,000 population, age-adjusted to the 2000 US population.

|----|: Confidence interval shows range that includes true value 95% of the time

* Too few cases to protect confidentiality and/or report reliable rates

§ Too few cases to meet precision standard, interpret with caution

Invasive colorectal cancer incidence by comparison areas



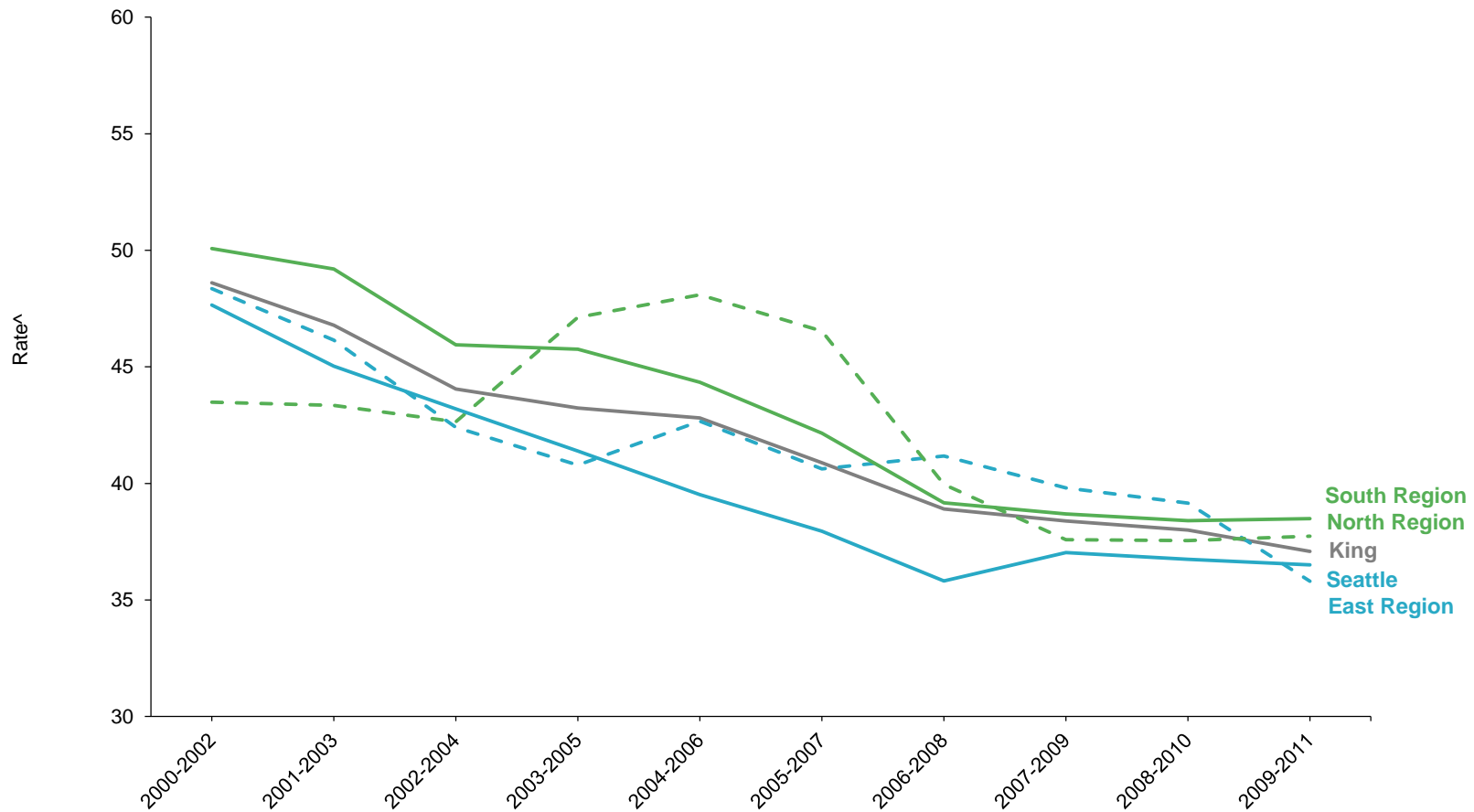
Source: SEER program; WA State Cancer Registry

[^]Rate = Cases of invasive colorectal cancer per 100,000 population, age-adjusted to the 2000 US population.

Prepared by: Public Health Seattle & King County, Assessment, Policy Development, & Evaluation, 1/2015

-----: Confidence interval shows range that includes true value 95% of the time

Invasive colorectal cancer incidence, King County, 2000-2011, three-year rolling averages

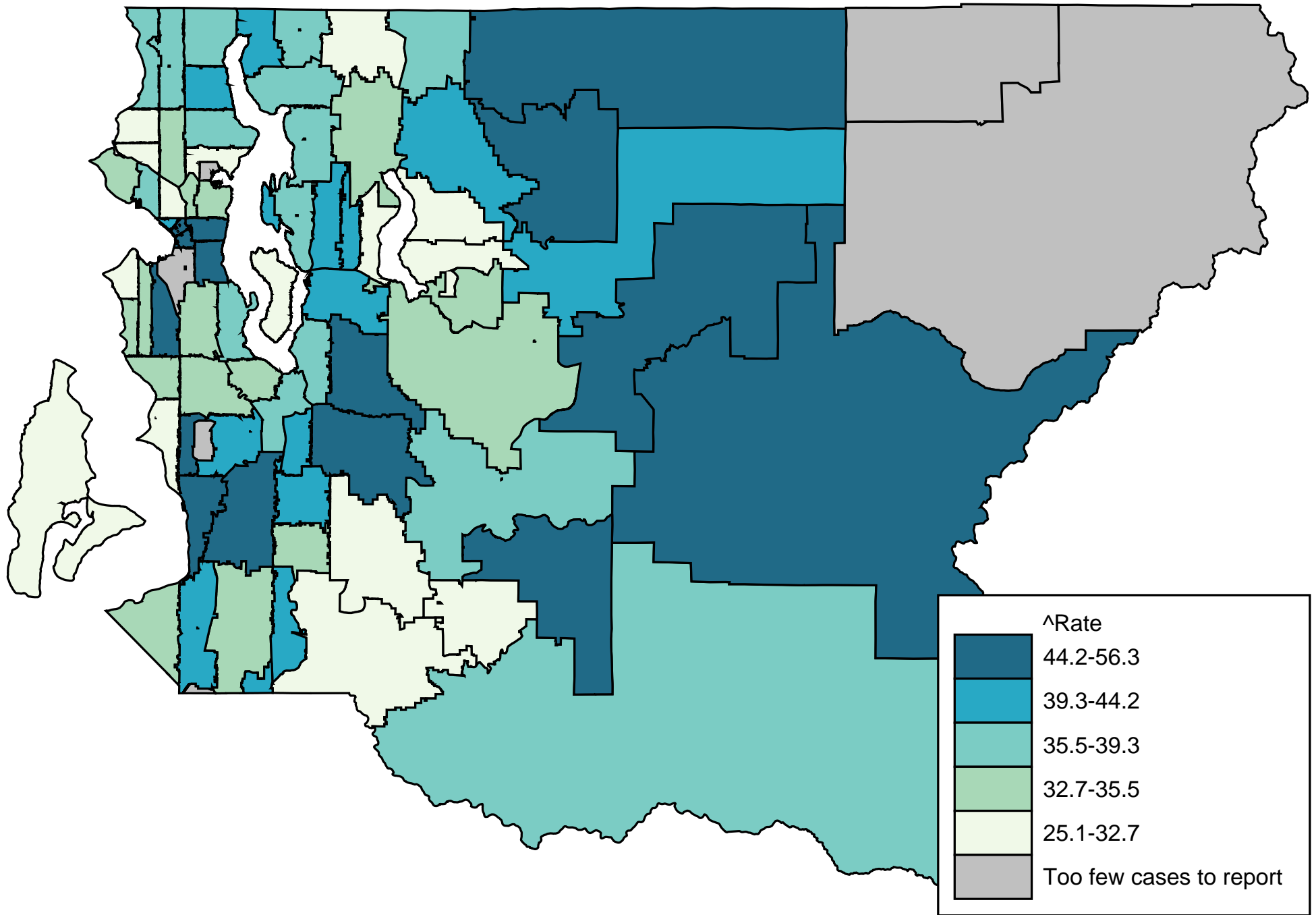


Source: Washington State Cancer Registry

Prepared by: Public Health Seattle & King County, Assessment, Policy Development, & Evaluation, 1/2015

^Rate = Cases of invasive colorectal cancer per 100,000 population, age-adjusted to the 2000 US population.

Invasive colorectal cancer incidence by zip codes, King County, 2007-2011 average



Source: Source: Washington State Cancer Registry.
Prepared by Public Health - Seattle & King County, APDE on 11/14/14.
^Rate = cases per 100,000 population, age-adjusted to the 2000 US population.

Invasive cervical cancer incidence

King County, 2007-2011 average

Source: Washington State Cancer Registry

Most recent data (2011): 6.0 cases per 100,000 women in King County, including 64 cases.

	Rate	Lower CI	Upper CI	Count per Year
King County (all ages)	6.2	5.6	7.0	64
Age				
<18	0.0	0.0	0.3	0
18-24	*	*	*	*
25-44	8.3	6.9	9.9	24
45-64	11.4	9.6	13.4	29
65+	8.8	6.5	11.5	10
Race/Ethnicity				
AIAN	21.2 [§]	9.3	47.4	2
Asian	6.5	4.8	8.8	9
Black	6.7	4.0	11.1	4
Hispanic	10.1	5.8	17.9	5
Multiple	0.0	0.0	0.0	0
NHPI	*	*	*	*
White	6.1	5.3	6.9	47
Neighborhood Poverty				
High	9.7	7.3	12.6	11
Medium	6.2	5.4	7.1	41
Low	5.0	3.8	6.6	12
Region				
East	4.6	3.6	6.0	13
North	7.3	5.0	10.5	7
Seattle	6.4	5.2	8.0	19
South	7.2	6.0	8.6	26

Notes:

N/A: Not available

* Too few cases to protect confidentiality and/or report reliable rates

§ Too few cases to meet precision standard, interpret with caution

CI is 95% Confidence Interval

Rate = Cases of invasive cervical cancer per 100,000 women, age-adjusted to the 2,000 US population.

Prepared By: Public Health - Seattle & King County;

Assessment, Policy Development, & Evaluation, 1/2015

Invasive cervical cancer incidence by comparison areas

Source: Surveillance, Epidemiology, and End Results Program; Washington State Cancer Registry

The Healthy People 2020 Objective is 7.1 cases per 100,000 women.

	Latest Available Year	Rate	Lower CI	Upper CI
United States	2011	6.7	N/A	N/A
Washington State	2011	7.1	6.2	8.0
King County	2011	6.0	4.6	7.7

Notes:

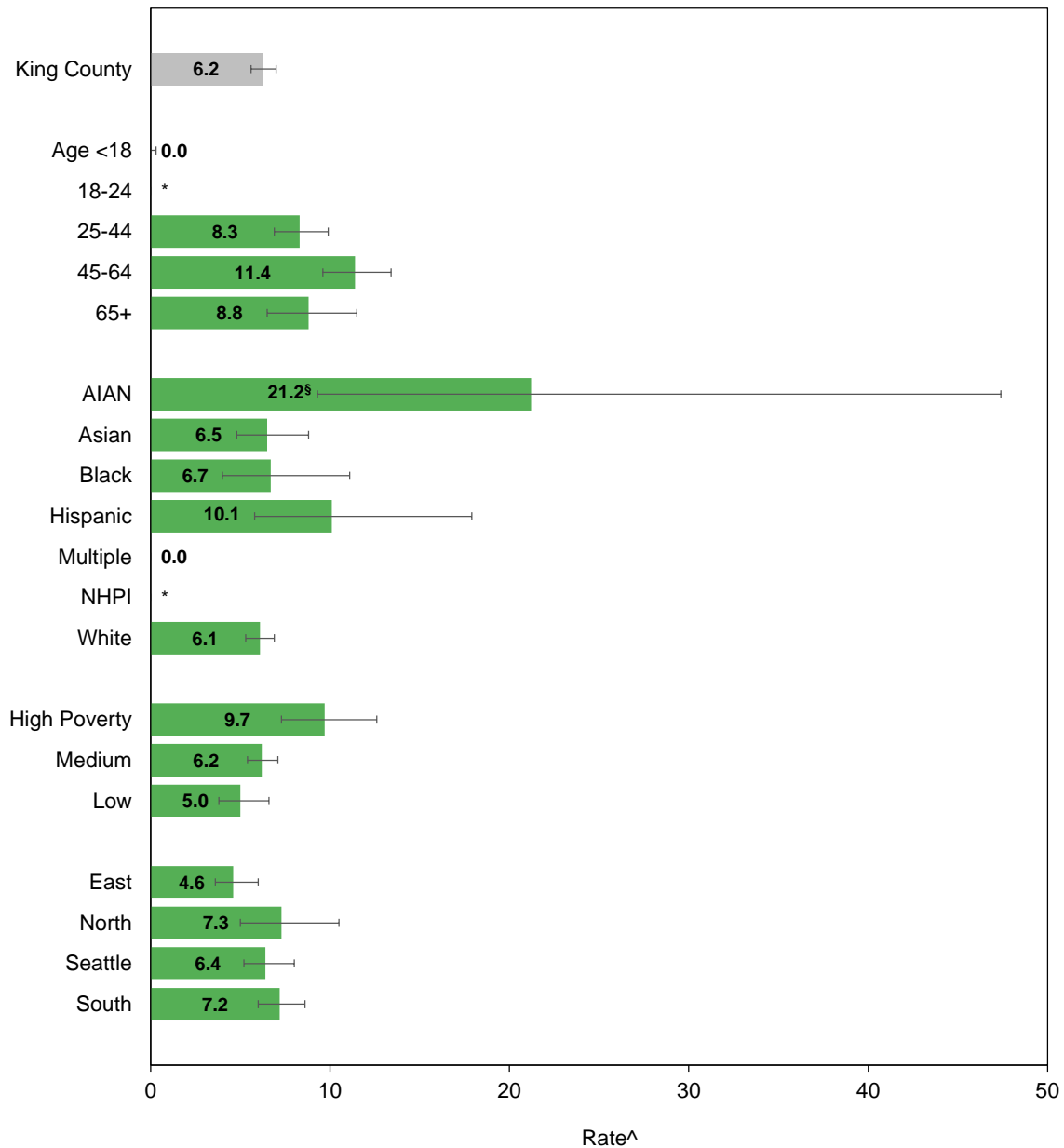
N/A: Not available

CI is 95% Confidence Interval

Rate = Cases of invasive cervical cancer per 100,000 women, age-adjusted to the 2000 US population.

Prepared By: Public Health - Seattle & King County;
Assessment, Policy Development, & Evaluation, 1/2015

Invasive cervical cancer incidence, King County, 2007-2011 average



Source: Washington State Cancer Registry

Prepared by: Public Health Seattle & King County, Assessment, Policy Development, & Evaluation, 1/2015

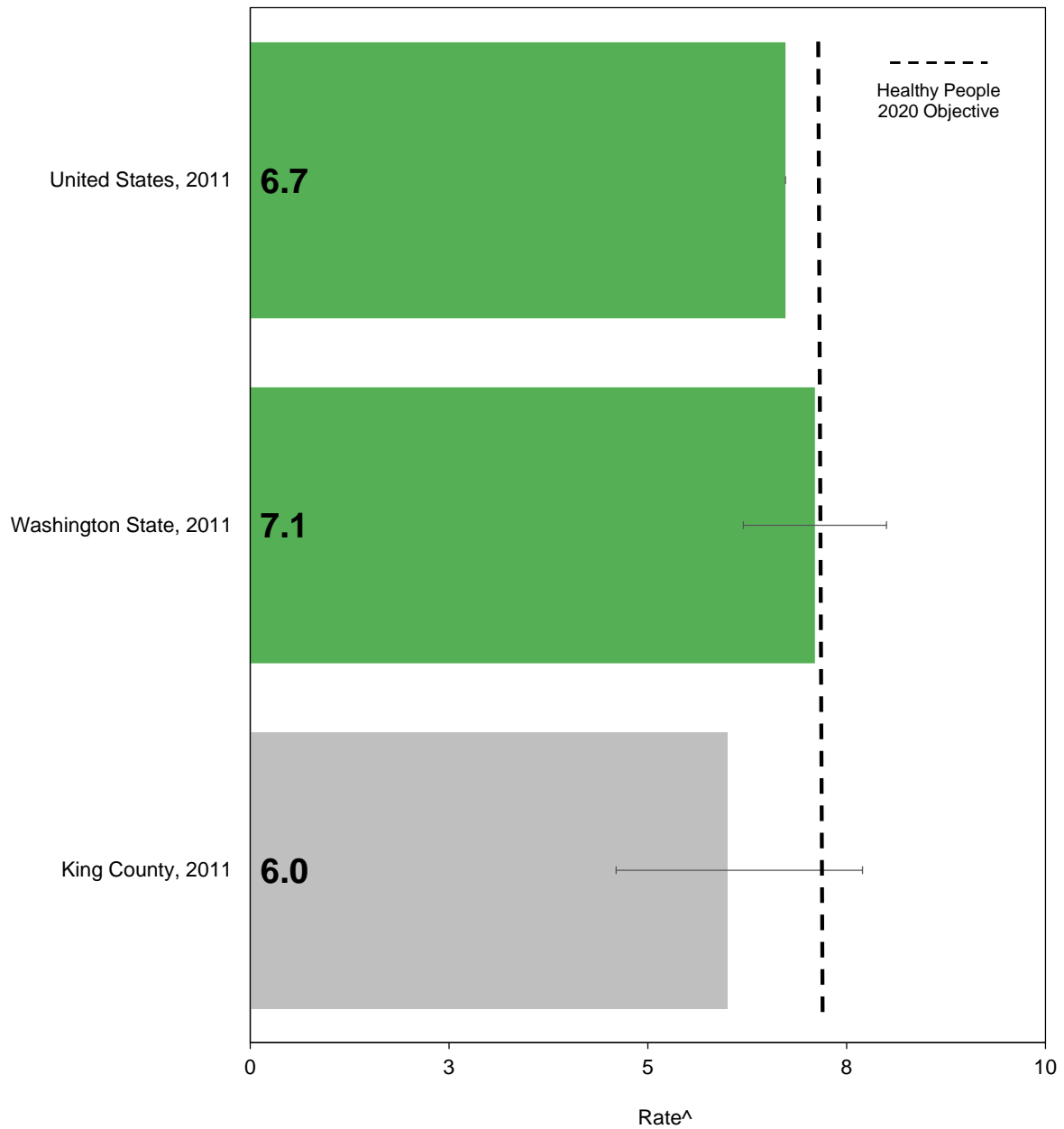
[^]Rate = Cases of invasive cervical cancer per 100,000 women, age-adjusted to the 2000 US population.

|-----|: Confidence interval shows range that includes true value 95% of the time

* Too few cases to protect confidentiality and/or report reliable rates

§ Too few cases to meet precision standard, interpret with caution

Invasive cervical cancer incidence by comparison areas



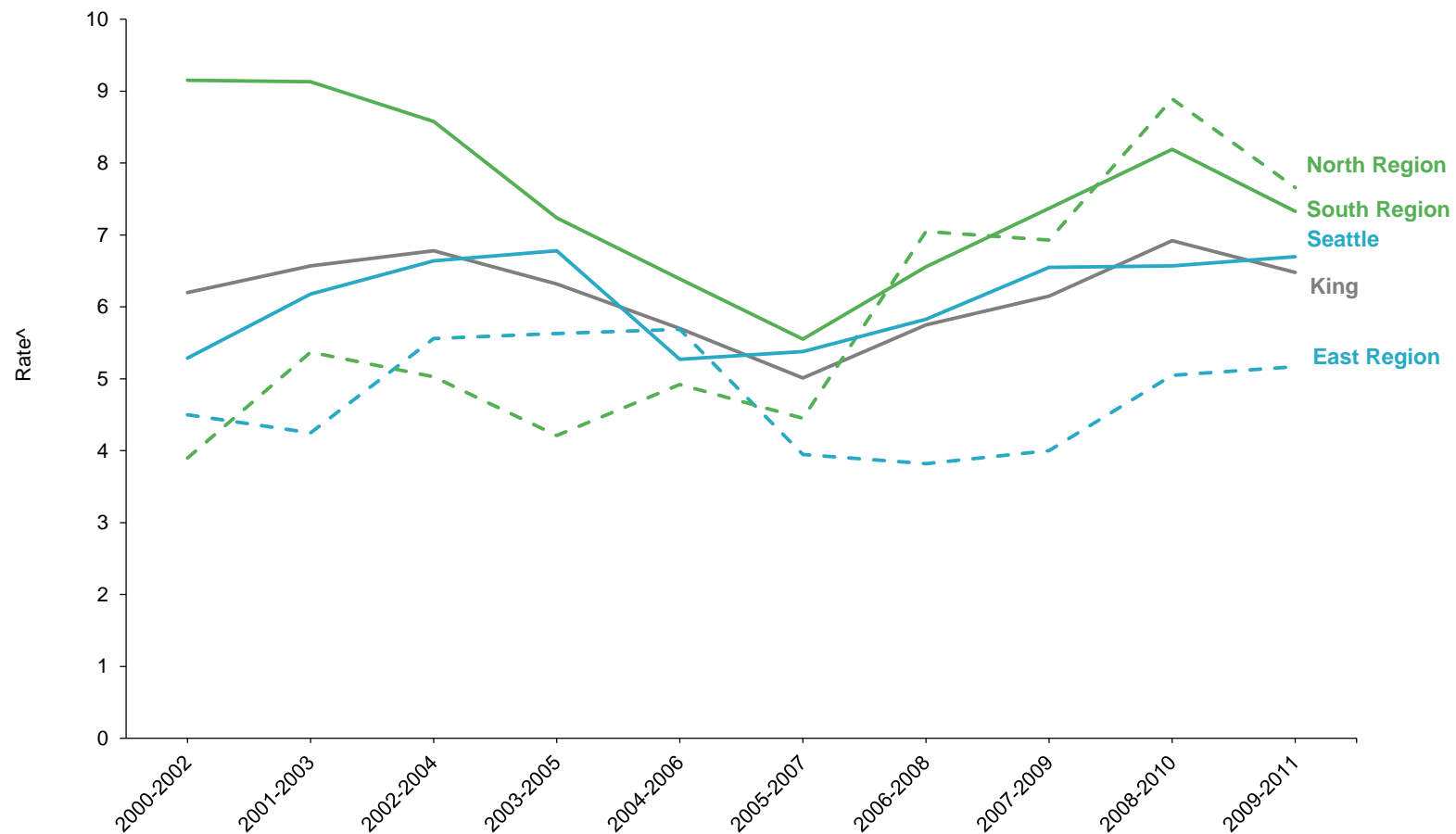
Source: SEER Program; WA State Cancer Registry

Prepared by: Public Health Seattle & King County, Assessment, Policy Development, & Evaluation, 1/2015

[^]Rate = Cases of invasive cervical cancer per 100,000 women, age-adjusted to the 2000 US population.

|-----|: Confidence interval shows range that includes true value 95% of the time

Invasive cervical cancer incidence, King County, 2000-2011, three-year rolling averages



Source: Washington State Cancer Registry

Prepared by: Public Health Seattle & King County, Assessment, Policy Development, & Evaluation, 1/2015

^Rate = Cases of invasive cervical cancer per 100,000 women, age-adjusted to the 2000 US population.

Invasive breast cancer incidence among women

King County, 2007-2011 average

Source: Washington State Cancer Registry

Most recent data (2011): 190.1 cases per 100,000 women in King County, including 2,018 cases.

	Rate	Lower CI	Upper CI	Count per Year
King County (all ages)	140.0	136.7	143.3	1426
Age				
<18	0.0	0.0	0.3	0
18-24	*	*	*	*
25-44	58.6	54.7	62.6	173
45-64	275.5	266.5	284.7	705
65+	469.7	452.3	487.7	547
Race/Ethnicity				
AIAN	81.4	54.6	120.9	7
Asian	89.8	82.8	97.3	124
Black	122.9	108.9	138.6	60
Hispanic	112.7	95.8	132.5	42
Multiple	65.4	47.0	90.6	11
NHPI	131.6	80.2	218.9	6
White	150.8	147.0	154.8	1212
Neighborhood Poverty				
High	129.7	120.5	139.5	152
Medium	138.8	134.7	143.0	904
Low	148.3	141.4	155.5	370
Region				
East	147.6	141.1	154.4	401
North	149.4	138.8	160.8	155
Seattle	136.9	130.7	143.3	393
South	134.8	129.4	140.4	485

Notes:

N/A: Not available

* Too few cases to protect confidentiality and/or report reliable rates

§ Too few cases to meet precision standard, interpret with caution

CI is 95% Confidence Interval

Rate = Cases of invasive breast cancer per 100,000 women, age-adjusted to the 2000 US population.

Prepared By: Public Health - Seattle & King County;

Assessment, Policy Development, & Evaluation, 1/2015

Invasive breast cancer incidence among women by comparison areas

Source: Surveillance, Epidemiology, and End Results Program; Washington State Cancer Registry

There is no Healthy People 2020 Objective for breast cancer.

	Latest Available Year	Rate	Lower CI	Upper CI
United States	2011	129.6	N/A	N/A
Washington State	2011	134.7	131.0	138.6
King County	2011	143.6	136.3	151.2

Notes:

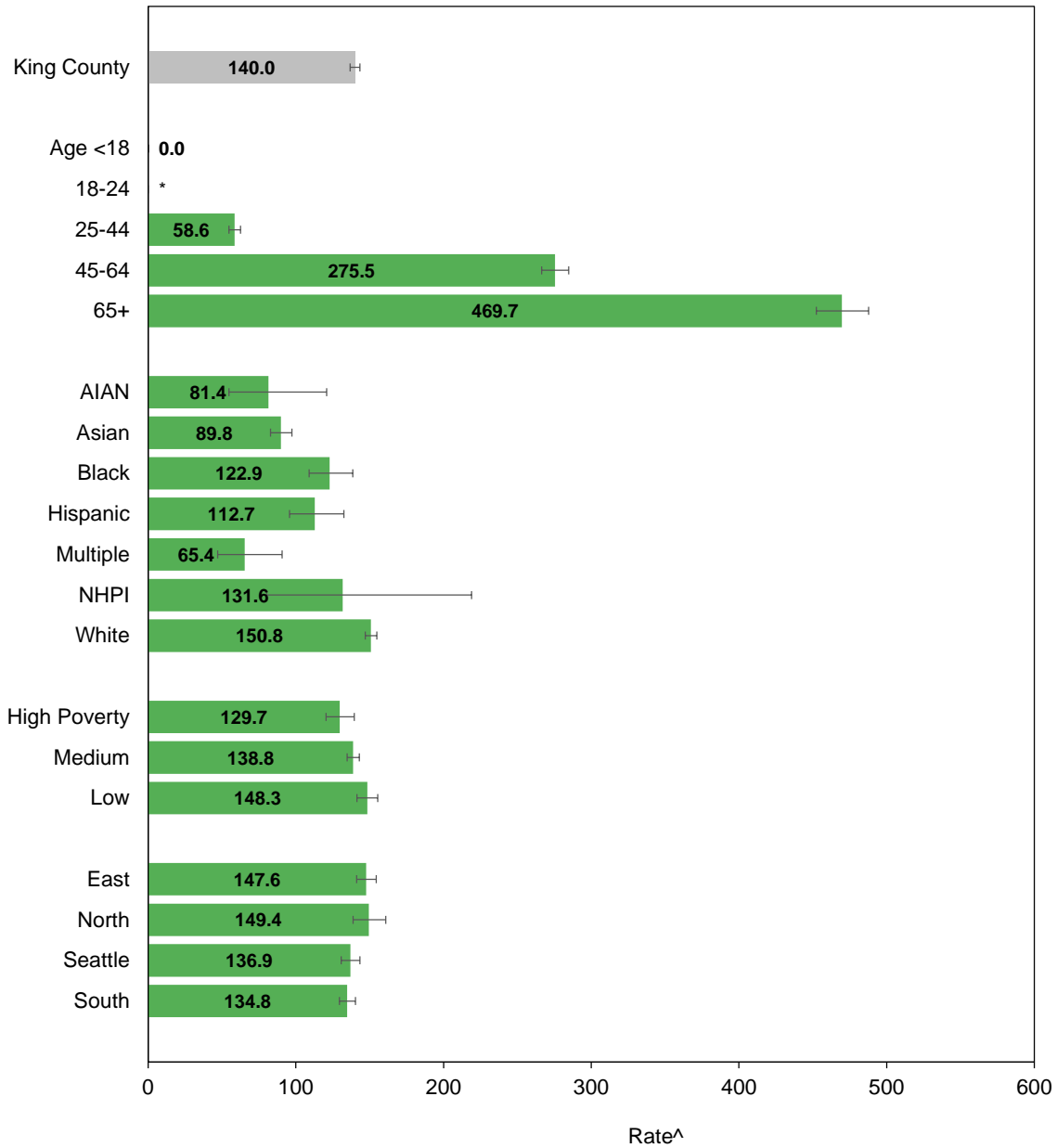
N/A: Not available

CI is 95% Confidence Interval

Rate = Cases of invasive breast cancer per 100,000 women, age-adjusted to the 2,000 US population.

Prepared By: Public Health - Seattle & King County;
Assessment, Policy Development, & Evaluation, 1/2015

Invasive breast cancer incidence among women, King County, 2007-2011 average



Source: Washington State Cancer Registry

Prepared by: Public Health Seattle & King County, Assessment, Policy Development, & Evaluation, 1/2015

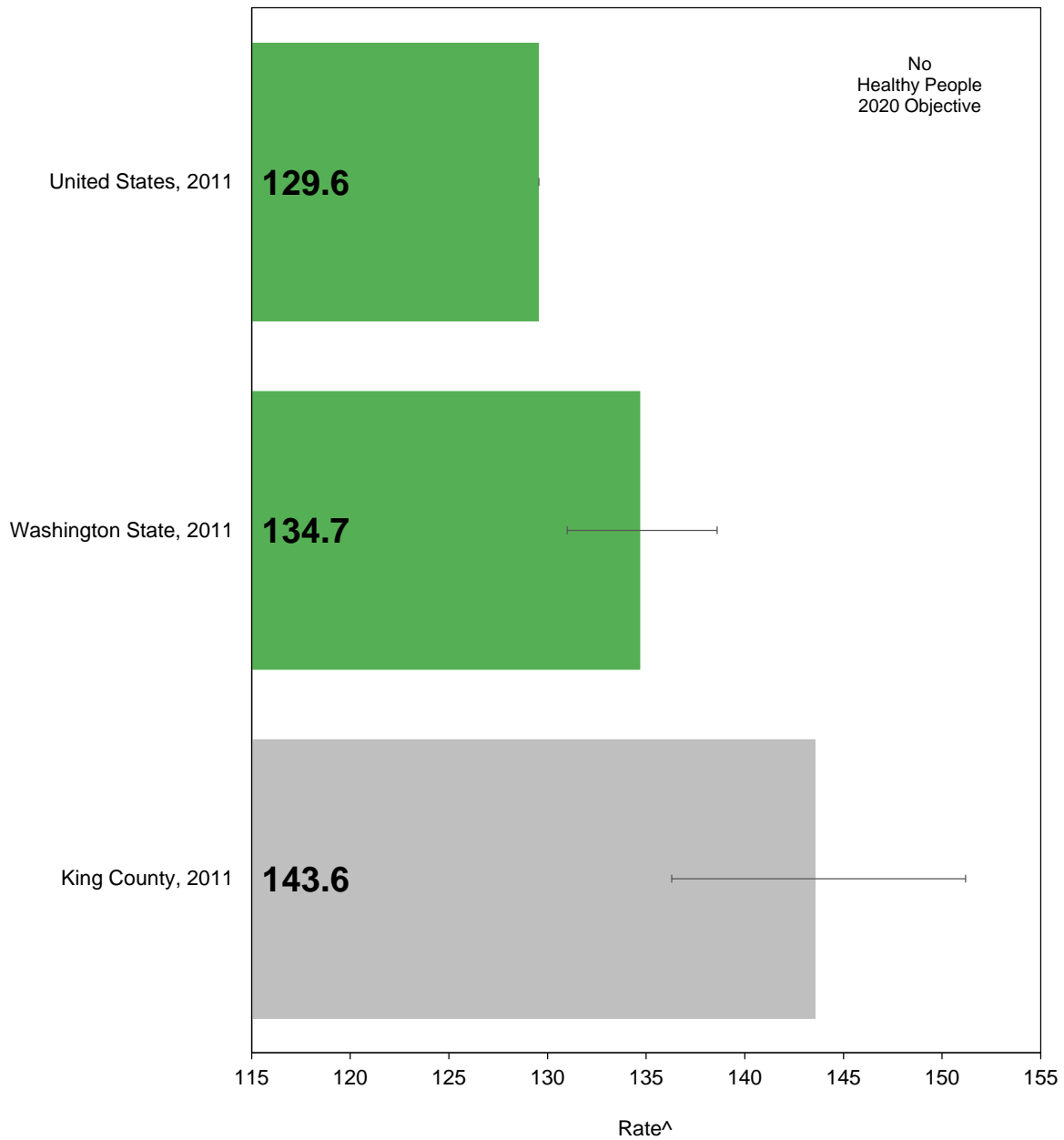
^Rate = Cases of invasive breast cancer per 100,000 women, age-adjusted to the 2000 US population.

|----|: Confidence interval shows range that includes true value 95% of the time

* Too few cases to protect confidentiality and/or report reliable rates

§ Too few cases to meet precision standard, interpret with caution

Invasive breast cancer incidence among women by comparison areas



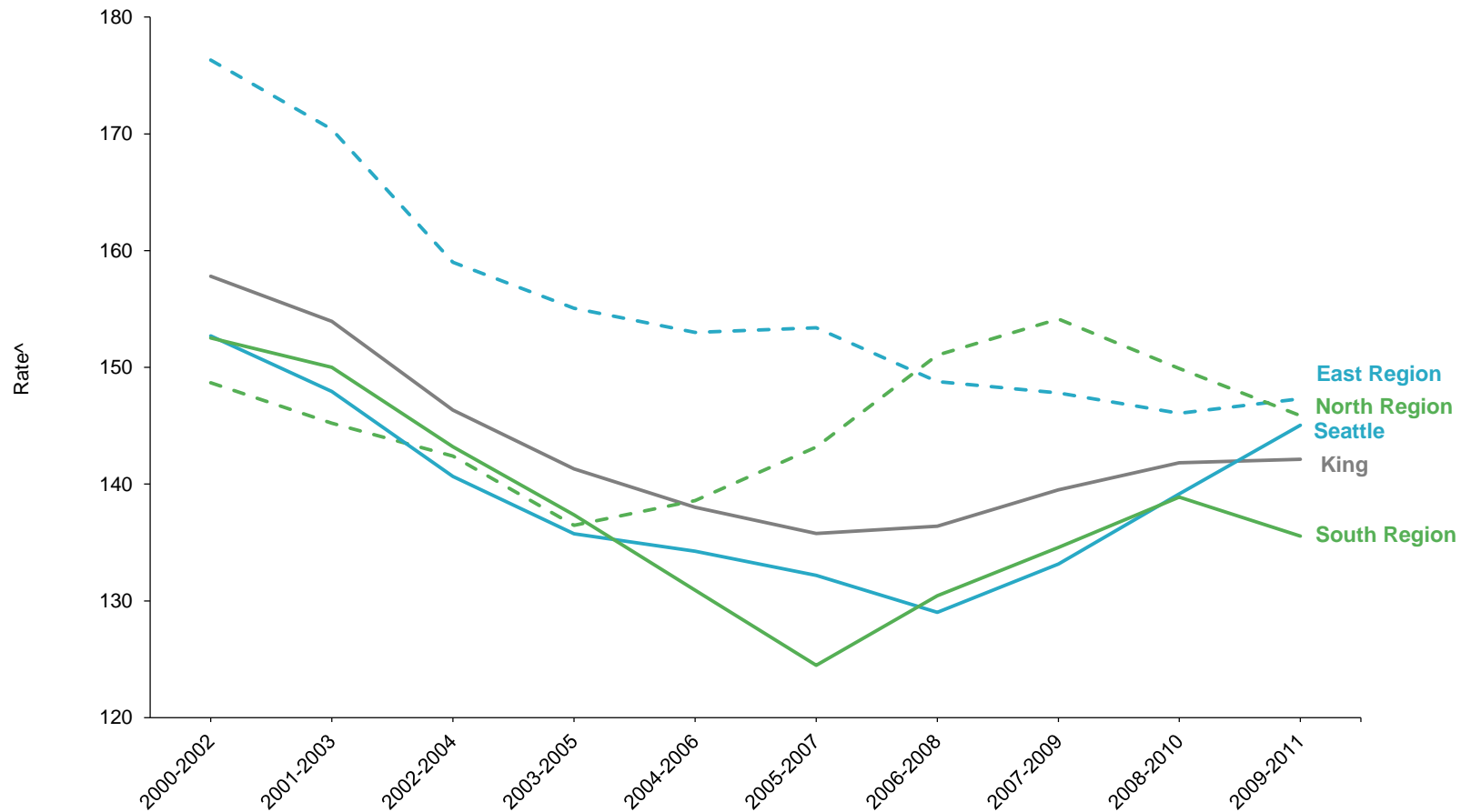
Source: Surveillance, Epidemiology, and End Results Program; Washington State Cancer Registry

[^]Rate = Cases of invasive breast cancer per 100,000 women, age-adjusted to the 2000 US population.

Prepared by: Public Health Seattle & King County, Assessment, Policy Development, & Evaluation, 1/2015

|-----|: Confidence interval shows range that includes true value 95% of the time

Invasive breast cancer incidence among women, King County, 2000-2011, three-year rolling averages



Source: Washington State Cancer Registry

Prepared by: Public Health Seattle & King County, Assessment, Policy Development, & Evaluation, 1/2015

^Rate = Cases of invasive breast cancer per 100,000 women, age-adjusted to the 2000 US population.

Leading causes of hospitalization, by age
King County, 2008-2012 average

Source: Washington State Department of Health, Office of Hospital and Patient Data Systems, Hospital Discharge Data.

Rank	King County			For age <1, see hospitalization causes	Age 1-14			Age 15-24			Age 25-44			Age 45-64			Age 65 and older		
		Rate	Count per Year			Rate	Count per Year		Rate	Count per Year		Rate	Count per Year		Rate	Count per Year		Rate	Count per Year
All Causes		8764.1	168534			1481.8	4756		41572.0	10294		6395.3	30959		7426.7	38624		23538.7	49938
1	Pregnancy-childbirth complications	1229.5	25423		Respiratory infections	171.2	549	Pregnancy/childbirth complications	1873.9	4640	Pregnancy/childbirth complications	3390.6	20708	Heart disease	818.1	4254	Heart disease	3743.5	7942
2	Heart disease	689.8	13135		Asthma	164.1	527	Mental illness	630.8	1562	Mental illness	538.8	3291	Cancer and benign tumors	701.0	3645	Unintentional injuries	2279.1	4835
3	Unintentional injuries	541.9	10428		Unintentional injuries	139.3	447	Unintentional injuries	260.7	646	Unintentional injuries	274.5	1676	Mental illness	624.6	3248	Cancer and benign tumors	1464.9	3108
4	Mental illness	488.5	9762		Lower gastrointestinal disorders	118.0	379	Lower gastrointestinal disorders	194.6	482	Cancer and benign tumors	212.8	1300	Unintentional injuries	530.9	2761	Osteoarthritis	1340.3	2843
5	Cancer and benign tumors	434.4	8535		Mental illness	81.5	262	Cancer and benign tumors	92.5	229	Lower gastrointestinal disorders	192.4	1175	Osteoarthritis	447.7	2328	Infectious and parasitic diseases	1239.0	2629
6	Osteoarthritis	274.2	5287		Cancer and benign tumors	77.3	248	Self-inflicted injuries	73.2	181	Heart disease	134.2	820	Lower gastrointestinal disorders	306.4	1593	Stroke	1230.4	2610
7	Lower gastrointestinal disorders	270.5	5234		Epilepsy, convulsions	69.3	222	Diabetes with complications	61.7	153	Skin infections	119.5	730	Infectious and parasitic diseases	301.6	1568	Respiratory infections	991.6	2104
8	Infectious and parasitic diseases	268.8	5172		Congenital anomalies	69.2	222	Infectious and parasitic diseases	57.7	143	Infectious and parasitic diseases	108.1	660	Spinal joint disease	259.1	1348	Lower gastrointestinal disorders	751.5	1594
9	Respiratory infections	242.5	4503		Skin infections	39.7	127	Skin infections	54.9	136	Spinal joint disease	90.3	552	Stoke	197.5	1027	Urinary tract infections	664.2	1409
10	Stroke	205.3	3839		Infectious and parasitic diseases	32.8	105	Assult	52.3	130	Biliary tract disease	75.2	459	Skin infections	185.1	963	Mental illness	656.8	1393

Notes:

Pregnancy and child-birth complications: Major complications include prolonged pregnancy, high blood pressure (e.g. preeclampsia, eclampsia).
Heart disease: Major sub-causes include congestive heart failure, cardiac dysrhythmias, acute myocardial infarction (i.e. heart attack), and coronary artery disease.
Unintentional injuries: Major sub-causes include falls, motor vehicle accidents, and poisoning.
Mental illness: Major sub-causes include bipolar disorder, depression, schizophrenia, and alcohol and substance-related disorders.
Cancer and benign tumors: Major sub-causes include uterine cancer, colorectal cancer, prostate cancer, lung cancer, and lymphatic cancer.
Lower gastrointestinal disorders: Major sub-causes include intestinal obstruction without hernia, appendicitis, and diverticulitis.
Infectious and parasitic diseases: Major sub-causes include septicemia (bacterial infection of the blood) and viral infection.
Respiratory infections: Major sub-causes include pneumonia and acute bronchitis.
Spinal joint disease: Major sub-causes include intervertebral disc disorders, spondylosis, and spinal stenosis.
Congenital abnormalities: Major sub-causes include heart and digestive anomalies.

* Too few cases to protect confidentiality and/or report reliable rates
§ Too few cases to meet precision standard, interpret with caution
See also Infant Death Causes
Rate = Hospitalizations per 100,000 population.

Prepared By: Public Health - Seattle & King County;
Assessment, Policy Development, & Evaluation, 10/2014

Leading causes of hospitalization, by gender

King County, 2008-2012 average

Source: Washington State Department of Health, Office of Hospital and Patient Data Systems, Hospital Discharge Data.

Rank	King County			Females			Males		
		Rate	Count per Year		Rate	Count per Year		Rate	Count per Year
All Causes		8771.3	168673		9889.9	99141		7765.1	69532
1	Pregnancy-childbirth complications	1229.5	25423	Pregnancy-childbirth complications	2510.0	25423	Heart disease	850.9	7312
2	Heart disease	689.8	13135	Heart disease	553.1	5822	Unintentional injuries	574.9	5156
3	Unintentional injuries	541.9	10428	Unintentional injuries	498.5	5271	Mental illness	489.9	4843
4	Mental illness	488.5	9762	Mental illness	487.8	4920	Cancer and benign tumors	400.5	3656
5	Cancer and benign tumors	434.4	8535	Cancer and benign tumors	475.8	4882	Infectious and parasitic diseases	303.2	2624
6	Osteoarthritis	274.2	5287	Osteoarthritis	305.8	3135	Lower gastrointestinal disorders	276.8	2561
7	Lower gastrointestinal disorders	270.5	5234	Lower gastrointestinal disorders	263.3	2672	Respiratory infections	265.2	2225
8	Infectious and parasitic diseases	268.8	5172	Infectious and parasitic diseases	242.2	2548	Osteoarthritis	237.4	2152
9	Respiratory infections	242.5	4503	Respiratory infections	226.0	2278	Stroke	226.7	1858
10	Stroke	205.3	3839	Stroke	186.9	1981	Spinal joint disease	159.5	1510

Notes:

Pregnancy and child-birth complications: Major complications include prolonged pregnancy, high blood pressure (e.g. preeclampsia, eclampsia),

Heart disease: Major sub-causes include congestive heart failure, cardiac dysrhythmias, acute myocardial infarction (i.e. heart attack), and coronary artery disease.

Unintentional injuries: Major sub-causes include falls, motor vehicle accidents, and poisoning.

Mental illness: Major sub-causes include bipolar disorder, depression, schizophrenia, and alcohol and substance-related disorders.

Cancer and benign tumors: Major sub-causes include uterine cancer, colorectal cancer, prostate cancer, lung cancer, and lymphatic cancer.

Lower gastrointestinal disorders: Major sub-causes include intestinal obstruction without hernia, appendicitis, and diverticulitis.

Infectious and parasitic diseases: Major sub-causes include septicemia (bacterial infection of the blood) and viral infection.

Respiratory infections: Major sub-causes include pneumonia and acute bronchitis.

Spinal joint disease: Major sub-causes include intervertebral disc disorders, spondylosis, and spinal stenosis.

Congenital abnormalities: Major sub-causes include heart and digestive anomalies.

* Too few cases to protect confidentiality and/or report reliable rates

§ Too few cases to meet precision standard, interpret with caution

Rate = Hospitalizations per 100,000, age-adjusted to year 2000 US population.

Prepared By: Public Health - Seattle & King County;

Assessment, Policy Development, & Evaluation, 10/2014

**Leading causes of infant hospitalization
King County, 2008-2012 average**

Source: Washington State Department of Health, Office of Hospital and Patient Data Systems, Hospital Discharge Data.

Leading Infant Death Causes			
Rank	Age <1		
		Rate	Count per Year
All Causes		106113.8	26003
1	Newborn delivery	97059.4	23785
2	Respiratory infections	1611.1	395
3	Jaundice	1480.5	363
4	Congenital anomalies	1027.5	252
5	Urinary tract infections	390.1	96
6	Unintentional injuries	268.5	66
7	Infectious and parasitic diseases	210.6	52
8	Upper gastrointestinal disorders	168.1	41
9	Short gestation & low birth weight	167.3	41
10	Fever of unknown origin	157.5	39

Notes:

Newborn delivery refers to routine hospitalization of a newborn infant after birth.

Respiratory infections: Major sub-causes include pneumonia and acute bronchitis.

Infectious and parasitic diseases: Major sub-causes include septicemia (bacterial infection of the blood) and viral infection.

Congenital anomalies: Major sub-causes include heart and digestive anomalies.

* Too few cases to protect confidentiality and/or report reliable rates

§ Too few cases to meet precision standard, interpret with caution

Rate = Hospitalizations per 100,000 population.

Prepared By: Public Health - Seattle & King County;
Assessment, Policy Development, & Evaluation, 10/2014

Leading causes of hospitalization, by neighborhood poverty level

King County, 2008-2012 average

Source: Washington State Department of Health, Office of Hospital and Patient Data Systems, Hospital Discharge Data.

Rank	King County			High Poverty			Medium Poverty			Low Poverty		
		Rate	Count per Year		Rate	Count per Year		Rate	Count per Year		Rate	Count per Year
All Causes		8771.3	168673		10876.7	12958		8714.3	134784		7799.8	19071
1	Pregnancy-childbirth complications	1229.5	25423	Pregnancy-childbirth complications	1088.8	1693	Pregnancy-childbirth complications	1235.6	20599	Pregnancy-childbirth complications	1295.6	2984
2	Heart disease	689.8	13135	Mental illness	893.8	1114	Heart disease	683.7	10533	Heart disease	586.6	1431
3	Unintentional injuries	541.9	10428	Heart disease	902.4	1010	Unintentional injuries	536.1	8306	Unintentional injuries	478.7	1158
4	Mental illness	488.5	9762	Unintentional injuries	715.2	840	Mental illness	476.4	7562	Cancer and benign tumors	421.5	1148
5	Cancer and benign tumors	434.4	8535	Cancer and benign tumors	447.3	509	Cancer and benign tumors	429.8	6772	Mental illness	389.7	963
6	Osteoarthritis	274.2	5287	Infectious and parasitic diseases	390.4	448	Infectious and parasitic diseases	272.1	4229	Osteoarthritis	318.3	831
7	Lower gastrointestinal disorders	270.5	5234	Respiratory infections	385.9	435	Osteoarthritis	266.8	4144	Lower gastrointestinal disorders	281.0	719
8	Infectious and parasitic diseases	268.8	5172	Skin infections	309.1	366	Lower gastrointestinal disorders	265.8	4105	Infectious and parasitic diseases	181.0	439
9	Respiratory infections	242.5	4503	Lower gastrointestinal disorders	296.9	356	Respiratory infections	240.0	3584	Respiratory infections	181.2	436
10	Stroke	205.3	3839	Stroke	243.4	267	Stroke	204.8	3108	Stroke	178.5	423

Notes:

Pregnancy and child-birth complications: Major complications include prolonged pregnancy, high blood pressure (e.g. preeclampsia, eclampsia),

Heart disease: Major sub-causes include congestive heart failure, cardiac dysrhythmias, acute myocardial infarction (i.e. heart attack), and coronary artery disease.

Unintentional injuries: Major sub-causes include falls, motor vehicle accidents, and poisoning.

Mental illness: Major sub-causes include bipolar disorder, depression, schizophrenia, and alcohol and substance-related disorders.

Cancer and benign tumors: Major sub-causes include uterine cancer, colorectal cancer, prostate cancer, lung cancer, and lymphatic cancer.

Lower gastrointestinal disorders: Major sub-causes include intestinal obstruction without hernia, appendicitis, and diverticulitis.

Infectious and parasitic diseases: Major sub-causes include septicemia (bacterial infection of the blood) and viral infection.

Respiratory infections: Major sub-causes include pneumonia and acute bronchitis.

* Too few cases to protect confidentiality and/or report reliable rates

§ Too few cases to meet precision standard, interpret with caution

Rate = Hospitalizations per 100,000, age-adjusted to year 2000 US population.

Prepared By: Public Health - Seattle & King County;

Assessment, Policy Development, & Evaluation, 10/2014

Leading causes of hospitalization, by region

King County, 2008-2012 average

Source: Washington State Department of Health, Office of Hospital and Patient Data Systems, Hospital Discharge Data.

Rank	King County			East Region			North Region			Seattle			South Region		
		Rate	Count per Year		Rate	Count per Year		Rate	Count per Year		Rate	Count per Year		Rate	Count per Year
	All Causes	8771.3	168673		7620.2	34873		8603.0	15187		8470.9	50427		9960.8	68041
1	Pregnancy-childbirth complications	1229.5	25423	Pregnancy-childbirth complications	1217.9	5699	Pregnancy-childbirth complications	1183.1	1880	Pregnancy-childbirth complications	971.9	7294	Pregnancy-childbirth complications	1526.1	10549
2	Heart disease	689.8	13135	Heart disease	550.4	2537	Heart disease	658.8	1307	Heart disease	660.4	3845	Heart disease	824.4	5445
3	Unintentional injuries	541.9	10428	Unintentional injuries	452.5	2068	Unintentional injuries	552.3	1064	Mental illness	568.2	3648	Unintentional injuries	579.7	3866
4	Mental illness	488.5	9762	Cancer and benign tumors	401.0	1941	Mental illness	528.4	912	Unintentional injuries	569.9	3429	Mental illness	483.8	3382
5	Cancer and benign tumors	434.4	8535	Mental illness	398.9	1820	Cancer and benign tumors	446.6	854	Cancer and benign tumors	432.7	2559	Cancer and benign tumors	457.0	3184
6	Osteoarthritis	274.2	5287	Osteoarthritis	298.5	1411	Infectious and parasitic diseases	319.9	629	Infectious and parasitic diseases	313.6	1870	Lower gastrointestinal disorders	305.6	2086
7	Lower gastrointestinal disorders	270.5	5234	Lower gastrointestinal disorders	258.3	1206	Osteoarthritis	277.7	543	Lower gastrointestinal disorders	239.6	1434	Respiratory infections	296.4	1954
8	Infectious and parasitic diseases	268.8	5172	Infectious and parasitic diseases	176.7	808	Lower gastrointestinal disorders	284.1	507	Osteoarthritis	246.4	1399	Osteoarthritis	279.3	1934
9	Respiratory infections	242.5	4503	Respiratory infections	177.8	802	Stroke	199.0	400	Respiratory infections	242.1	1351	Infectious and parasitic diseases	278.8	1865
10	Stroke	205.3	3839	Stroke	165.8	748	Respiratory infections	217.9	396	Stroke	193.1	1104	Stroke	246.0	1587

Notes:

Pregnancy and child-birth complications: Major complications include prolonged pregnancy, high blood pressure (e.g. preeclampsia, eclampsia),
Heart disease: Major sub-causes include congestive heart failure, cardiac dysrhythmias, acute myocardial infarction (i.e. heart attack), and coronary artery disease.
Unintentional injuries: Major sub-causes include falls, motor vehicle accidents, and poisoning.
Mental illness: Major sub-causes include bipolar disorder, depression, schizophrenia, and alcohol and substance-related disorders.
Cancer and benign tumors: Major sub-causes include uterine cancer, colorectal cancer, prostate cancer, lung cancer, and lymphatic cancer.
Lower gastrointestinal disorders: Major sub-causes include intestinal obstruction without hernia, appendicitis, and diverticulitis.
Infectious and parasitic diseases: Major sub-causes include septicemia (bacterial infection of the blood) and viral infection.
Respiratory infections: Major sub-causes include pneumonia and acute bronchitis.

* Too few cases to protect confidentiality and/or report reliable rates

§ Too few cases to meet precision standard, interpret with caution

Rate = Hospitalizations per 100,000, age-adjusted to year 2000 US population.

Prepared By: Public Health - Seattle & King County;
Assessment, Policy Development, & Evaluation, 4/2014

Leading causes of hospitalization, by comparison areas

Source: Washington State Department of Health, Office of Hospital and Patient Data Systems, Hospital Discharge Data.

Rank	Washington State (2011)			King County (2011)		
		Rate	Annual Count		Rate	Annual Count
All Causes		9418.1	129677		8635.4	33700
1	Newborn delivery	1261.1	15885	Newborn delivery	1315.0	4728
2	Heart disease	776.7	11132	Heart disease	642.7	2501
3	Mental illness	460.6	6335	Mental illness	497.4	2006
4	Cancer	422.2	6069	Cancer	410.6	1640
5	Pregnancy complications	426.2	5645	Hospitalization recommended for labor & delivery	354.2	1480
6	Hospitalization recommended for labor & delivery	357.5	4697	Pregnancy complications	342.7	1418
7	Infectious and parasitic diseases	327.8	4656	Labor complications	280.7	1184
8	Osteoarthritis	306.5	4584	Unintentional falls	303.0	1165
9	Unintentional falls	324.5	4551	Infectious and parasitic diseases	295.5	1161
10	Respiratory infections	294.8	4044	Osteoarthritis	281.3	1122
11	Lower gastrointestinal disorders	290.6	4028	Lower gastrointestinal disorders	254.6	997
12	Fractures	263.4	3673	Fractures	243.8	944
13	Labor complications	274.8	3664	Respiratory infections	241.9	909
14	Stroke	216.2	3069	Stroke	202.7	776

Notes:

Newborn delivery refers to routine hospitalization of a newborn infant after birth.

Heart disease: Major sub-causes include congestive heart failure, cardiac dysrhythmias, acute myocardial infarction (i.e. heart attack), and coronary artery disease.

Mental illness: Major sub-causes include bipolar disorder, depression, schizophrenia, and alcohol and substance-related disorders.

Cancer: Major sub-causes include benign uterine cancer, colorectal cancer, prostate cancer, lung cancer, and lymphatic cancer.

Major reasons why women are hospitalized for labor and delivery include: previous cesarean section, amniotic fluid/cavity complications, fetal malpresentation, and uterine inertia.

Labor complications: Major complications include first and second degree perineal laceration and umbilical cord complications.

Pregnancy complications: Major complications include prolonged pregnancy and high blood pressure (e.g. preeclampsia, eclampsia).

Lower gastrointestinal disorders: Major sub-causes include intestinal obstruction without hernia, appendicitis, and diverticulitis.

Respiratory infections: Major sub-causes include pneumonia and acute bronchitis.

Infectious and parasitic diseases: Major sub-causes include septicemia (bacterial infection of the blood) and viral infection.

* Too few cases to protect confidentiality and/or report reliable rates

§ Too few cases to meet precision standard, interpret with caution

Rate = Hospitalizations per 100,000, age-adjusted to year 2000 US population.

Prepared By: Public Health - Seattle & King County;
Assessment, Policy Development, & Evaluation, 4/2014