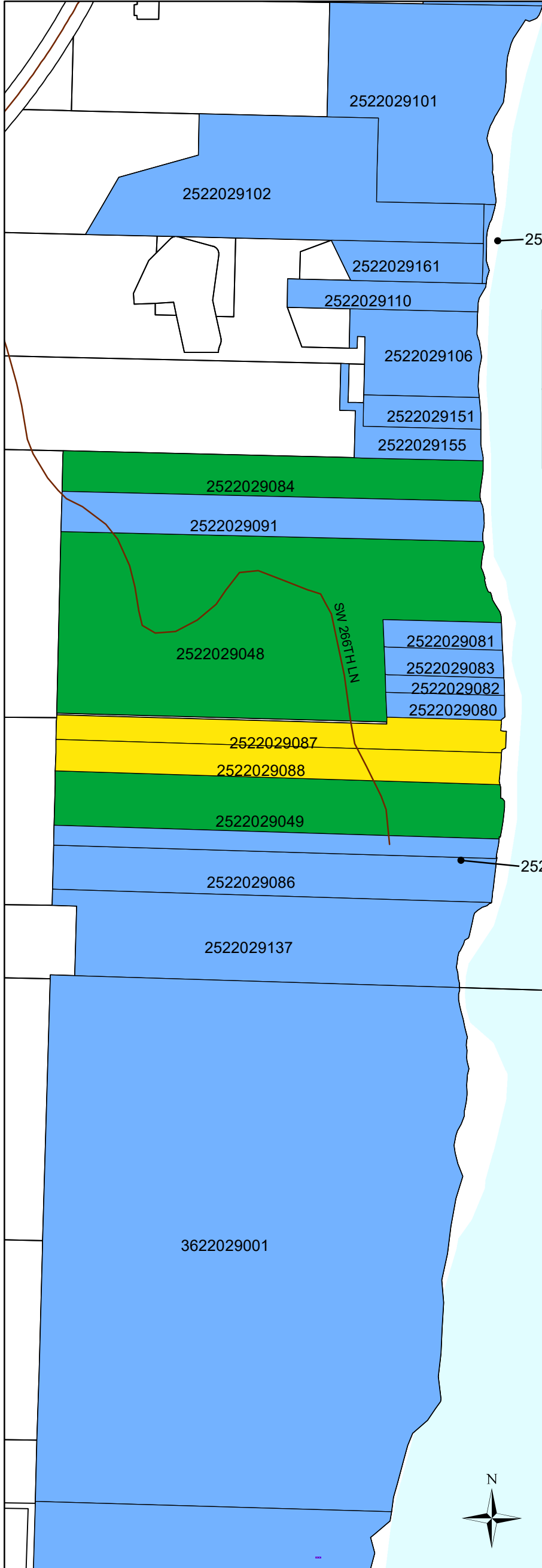


# Vashon And Maury Island MRA Shoreline Survey Map Date July 15, 2021

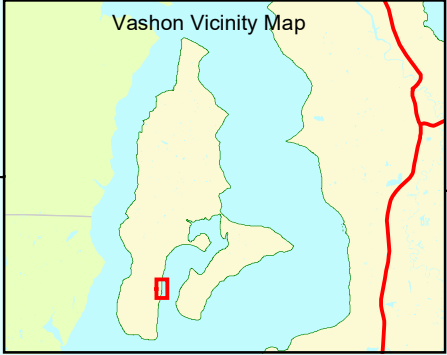


**Legend**

- Vacant or No Suspected OSS
- Suspected OSS / No Documentation
- Known OSS / Required Inspection NOT Current
- Known OSS / Required Inspection Current

## Harbor Heights Section B

Puget Sound



The information included on this map has been compiled by King County staff from a variety of sources and is subject to change without notice. King County makes no representations or warranties, express or implied, as to accuracy, completeness, timeliness, or rights to the use of such information. King County shall not be liable for any general, special, indirect, incidental, or consequential damages including, but not limited to, lost revenues or lost profits resulting from the use or misuse of the information contained on this map. Any sale of this map or information on this map is prohibited except by written permission of King County. MRA\_Vashon\_Parcels\_20210715  
Peter Isaksen, Liana Criscuolo, Environmental Health GIS, July 15, 2021

