

First Friday Forum

FEBRUARY 2, 2018



OPEN ENROLLMENT 5 Results



OE5 QHP Enrollment Measures

As of 2/1/2018

Category	Enrollee Count
Total 2018 QHPs selected	244,555
New Enrollee 2018 Enrollees with no 2017 enrollment	82,047
Effectuated 2018 Enrollees that have made a binding payment	181,167

King County

As of 2/1/2018

Category	Enrollee Count
Total 2018 QHPs selected	93,950

OE5 QDP Enrollment Measures

As of 2/1/2018

Category	Enrollee Count
Total 2018 QDPs selected	66,791
Effectuated 2018 Enrollees that have made a binding payment	24,176

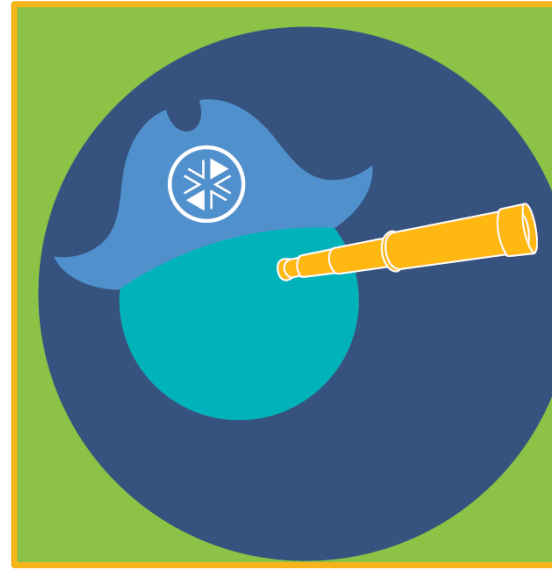
Winter Training and...

Available – complete by March 1st, noon

Shortened version of Special Enrollment Period

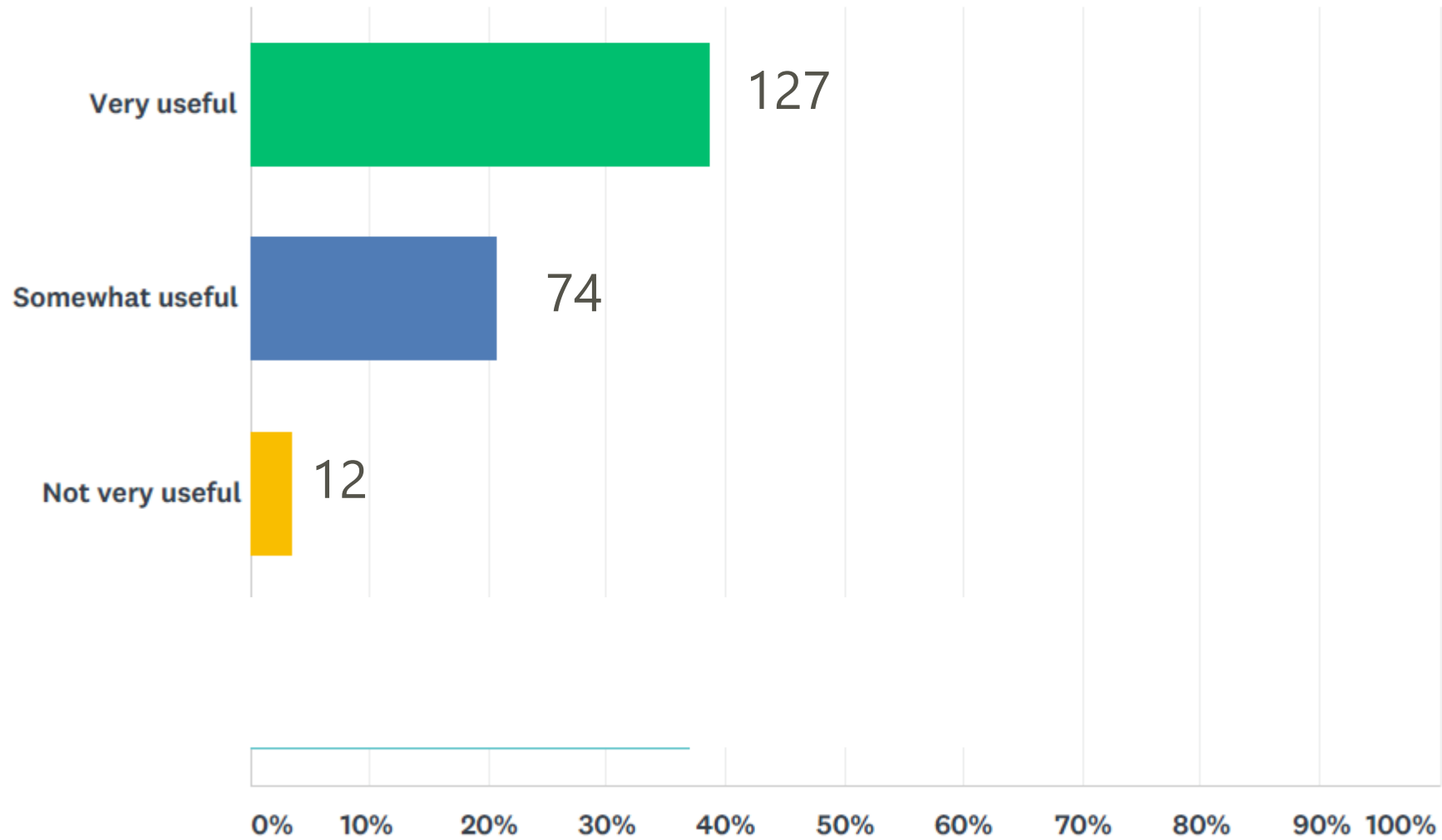
April Release

- Changes to Special Enrollment Period rules
- Changes to Special Enrollment Period system flow



2018 Navigator Survey

Usefulness of in-service training



Navigator Call Center usage

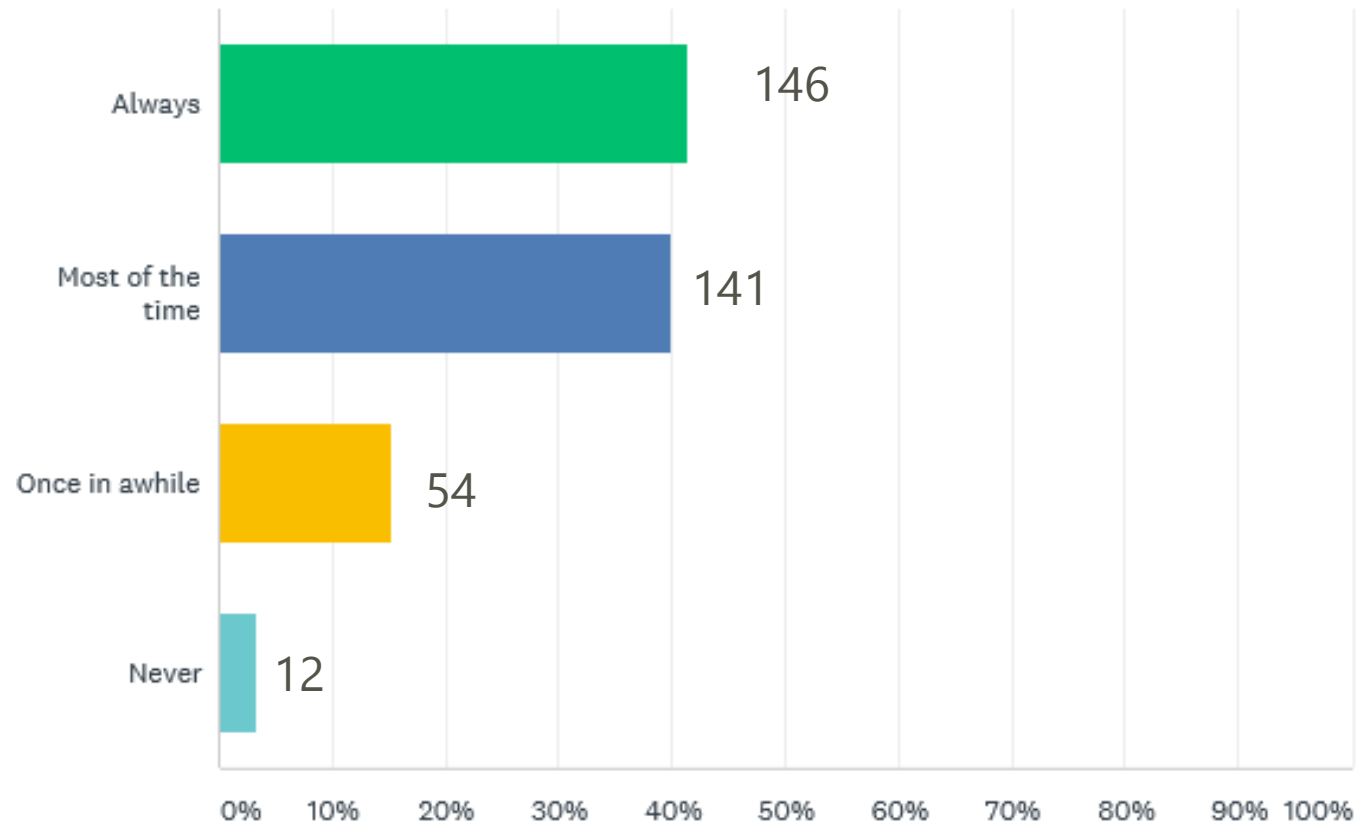
Several times a week	40	11%
Once or twice a week	59	16%
Once or twice a month	107	30%
Never or almost never	148	42%
	354	100%



Navigator News

I read the Navigator News

Answered: 353 Skipped: 34



Questions?

