



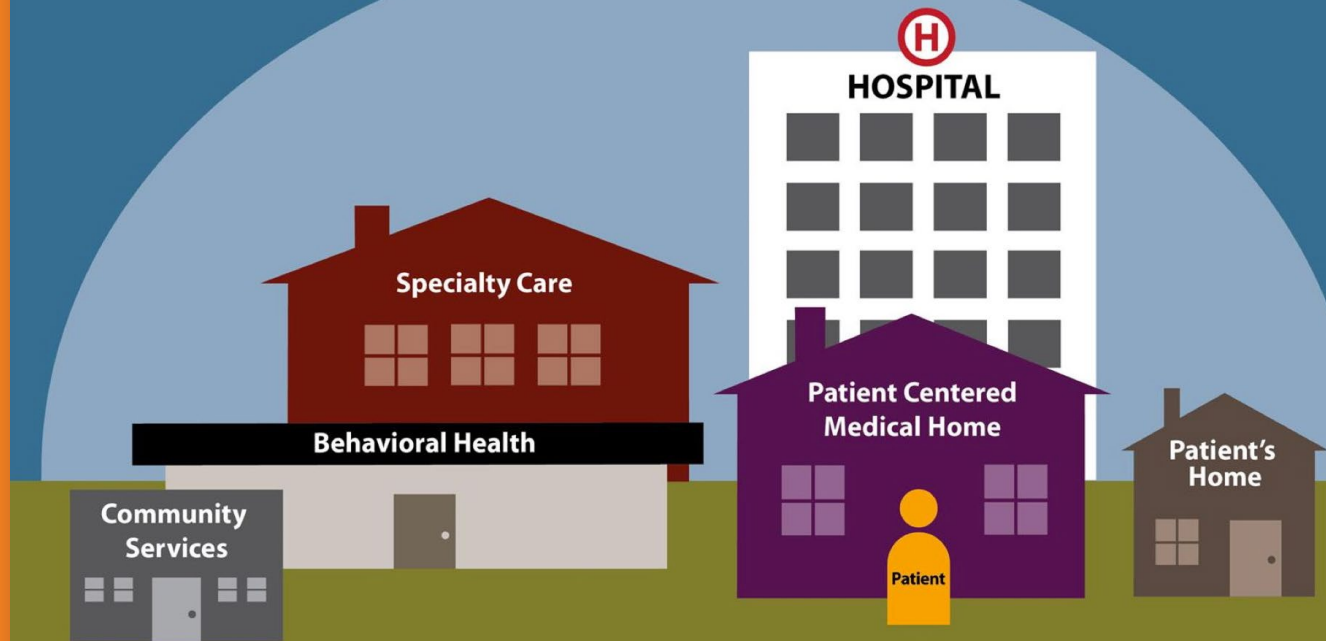
The power
of community

Nici Feldhammer
Manager, Business
Development

Friday, November 1, 2019

Understanding Managed Care

Care Coordination



ChildrenFirst Rewards

- Through the ChildrenFirst program we reward our members for getting care during pregnancy and childhood.
 1. Prenatal Program members will get a \$65 gift card to buy a car seat. The gift card will be mailed to their home and can be redeemed online.
 2. Well Child Program members will get a \$20 gift card every time their child comes in for a well child visit and is up-to-date on their vaccinations.
 3. Before the child's first birthday, they can claim a one-time \$65 gift card for a car seat instead of the \$20.



Baby Bassinet Box

- CHPW's Baby Bassinet Box program helps keep members and their baby safe while sleeping.
- Members can get a baby box if they are with CHPW and are pregnant in their third trimester. Most Community Health Centers have baby bassinet boxes available.
- When they come in for a checkup, they will be shown a short video on safe sleep in either English or Spanish.
- Baby Box Includes
 - Diaper bag and diapers
 - Wearable baby blanket
 - Baby clothes
 - Baby wipes
 - Thermometer



NEW Nurse Advice Line

Updated Nurse Advice Line is for CHPW members and uninsured patients only.

On January 1st, 2020, the old Nurse Advice Line will be phased out and only the new one will remain.

1-866-418-2920



Medicaid Acupuncture Benefit

- CHPW Apple Health adult members (excludes BHSO members) age 18 and above can get up to six (6) acupuncture visits each calendar year at no cost when they see a CHPW network provider.
- CHPW will cover acupuncture needling treatment only. Herbs, nutritional supplements and other visits are not covered.
- No PCP referral is required. Members can call Customer Service or search our directory to find a provider.
- If the member needs more than six (6) visit, a prior authorization is required for extension.



CHPW Medicare Advantage

- CHPW is a Health Maintenance Organization (HMO)
- We are a Medicare Advantage Organization with a Medicare contract
 - Contract with CMS is renewed on an annual basis.
 - We administer Medicare covered benefits.
 - We must provide the same services as Medicare Parts A, B, and D if the plan covers part D.
 - Patients still receive Medicare Rights and Protections.
- CHPW Medicare Advantage offers more benefits than Original Medicare: Get More than Medicare!
 - And often Medicare Advantage plans have lower out of pocket costs.



Preventive Care is Our Focus

- **\$0 Copay for Preventive Services**
- All CHPW Medicare Advantage Plans Include:
 - Welcome to Medicare physical Exam
 - Mammograms
 - Pap Smears/Pelvic Exam
 - Prostate Cancer Screening
 - Colorectal Screening
 - Diabetes Screening
 - Cardiovascular Screening
 - Bone Mass Measurement
 - Influenza and Pneumococcal Vaccines
 - Glaucoma Screening

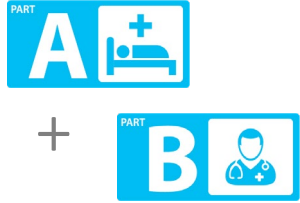


Noteworthy Supplemental Benefits

- Vision
 - All CHPW Medicare Advantage Plans offer an annual vision exam at \$0 copay and at least \$150/2 years toward vision hardware.
- Alternative Medicine
 - All CHPW Medicare Advantage Plans offer up to 12 visits per year for any combination of acupuncture, naturopathy and chiropractic services.
- Preventive Dental Coverage
 - All CHPW Medicare Advantage Plans offer some level of preventive dental coverage.
 - This includes annual exam, x-ray, cleaning and fluoride treatment.
- Duals
 - Transportation, OTC and Hearing Aids are offered in addition to the benefits listed below.

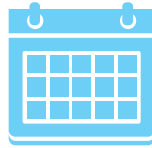


Important Dates



When you become entitled to Medicare Parts A and B

You can apply to enroll up to 3 months before, the month of, and up to 3 months after your Medicare Parts A and B effective date.



October 15th to December 7th

Annual Election Period (AEP)

Time to review your options and make a selection that fits your needs.

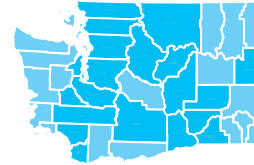


January 1st to March 31st

Open Election Period (OEP)

You can switch from on MA plan to a different MA plan. Drop your MA and return to Original Medicare.

You may add or drop Part D coverage, if you made one of the changes described above.



If you move into the service area

You can apply to enroll during the month prior to your move, the month you move, and up to 2 months after your move.



If you have Medicare and Medicaid or qualify for LIS

You may only change plan once per quarter.



The power
of community

Nici Feldhammer
Manager, Business Development
206-972-3952

Nici.feldhammer@chpw.org

Thank you for
attending!