



Poverty Bay Pollution Identification and Correction

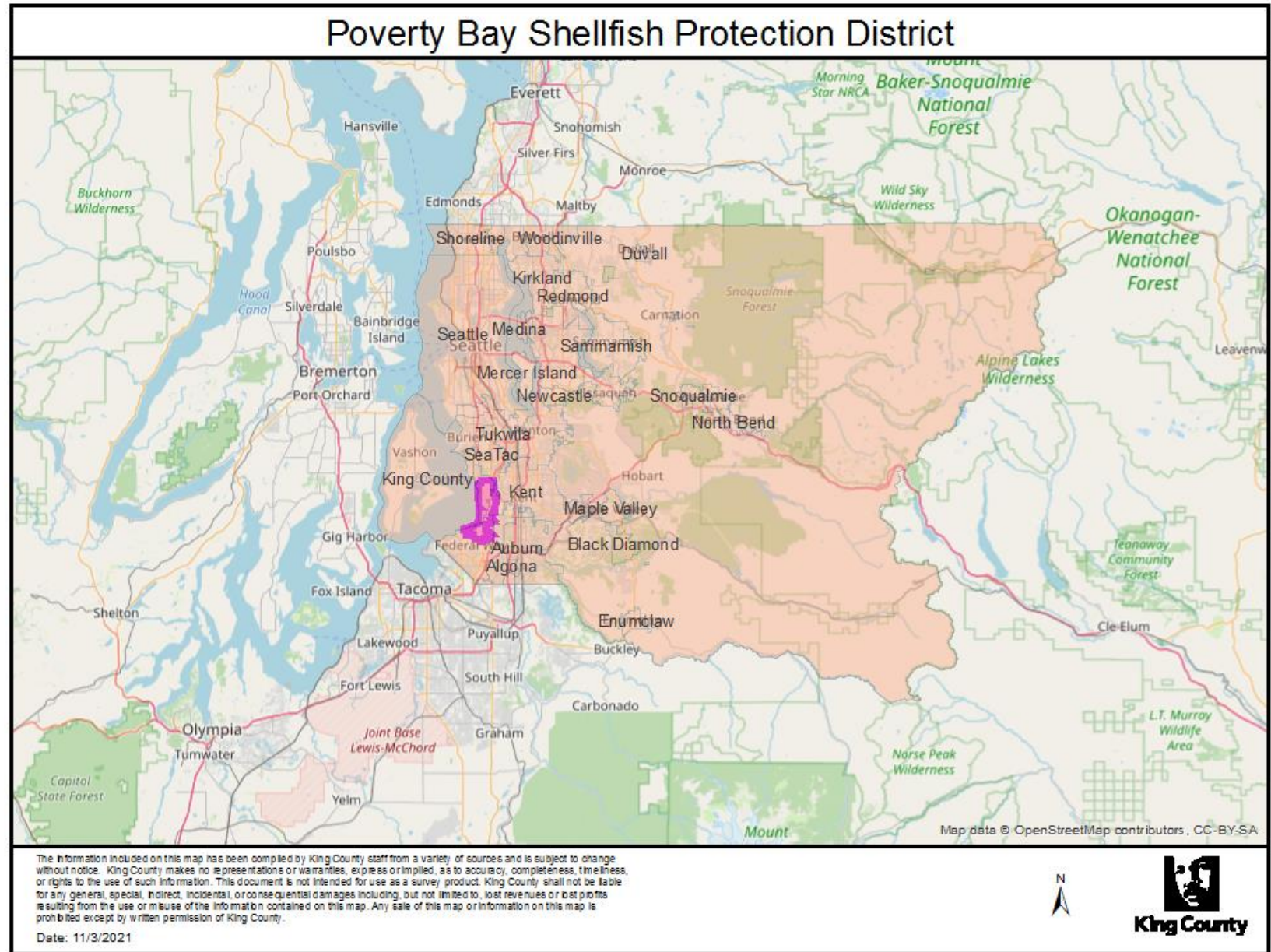
Community Engagement and Outreach

Eunbi Lee

Public Health – Seattle and King County

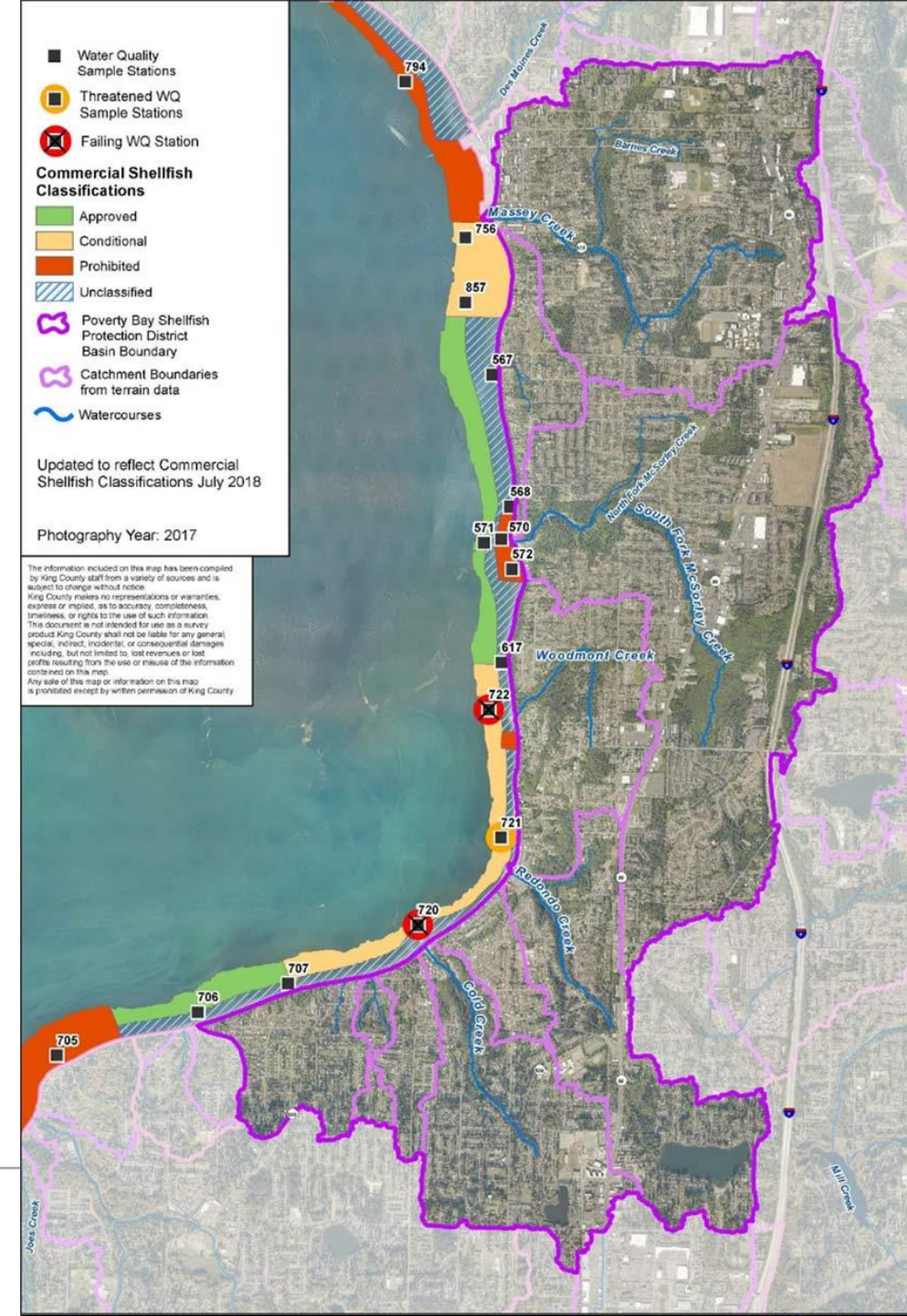
Nov 5th, 2021

Poverty Bay Shellfish Protection District



Pollution Identification and Correction (PIC) program

- Problem
 - “conditionally approved”
- Actions
 - Water Quality Monitoring
 - Septic System maintenance
 - “Poo-llution” control



Outreach and Education Targets

Audience

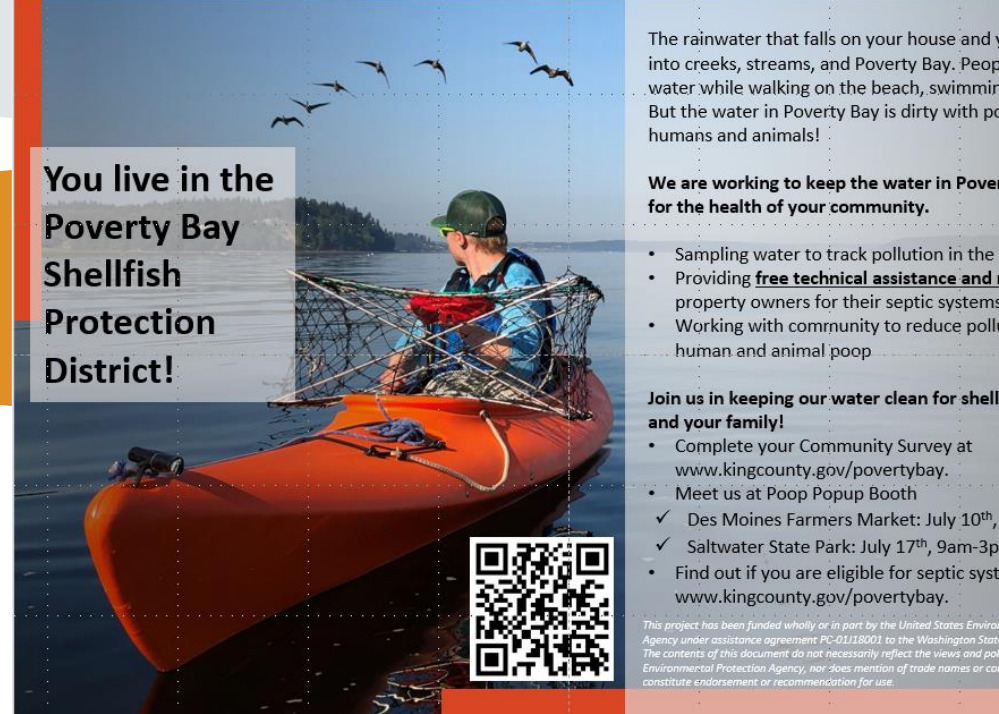
- Residents (homeowners)
- Families
- Ethnic Groups (Spanish, Korean, Vietnamese)

Messages

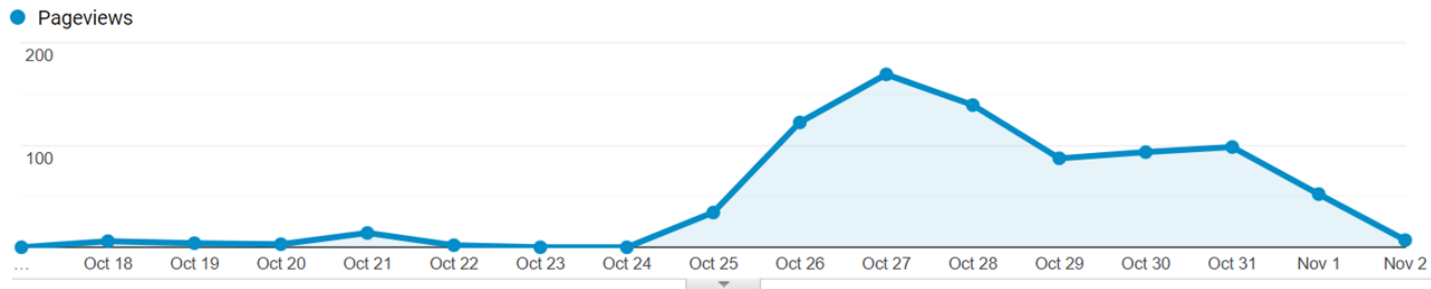
- Maintain your septic system regularly
 - Think before you flush (Don't flush "flushable" wipes)
 - Scoop the (pet) poop
 - Do not feed wildlife
-

Outreach and Education strategy

- Initial: Introduction of Poverty Bay Shellfish Protection District (+11,000 postcards)
- Seasonal/inter-introduction: Halloween messaging (+250 interactions, +400 PSSH)
- Cultural approach
- Community-based Organizations
- [Poverty Bay PIC campaign website](#)



2021 Fall Septic Maintenance Message



Regular Septic Maintenance is your Poop-Buster!

Get your septic system checked at least every 3 years to prevent a nightmare of sewage backing up in your house or surfacing in your yard.

FREE TECHNICAL ASSISTANCE & SEPTIC REBATE AVAILABLE!

Public Health
Seattle & King County

www.kingcounty.gov/povertybay

This project has been funded wholly or in part by the United States Environmental Protection Agency under assistance agreement PC01J18001-0 to the Washington Department of Health. The contents of this document do not necessarily reflect the views and policies of the Environmental Protection Agency, nor does mention of trade names or commercial products constitute endorsement or recommendation for use.

Financial assistance is available if you live in the Poverty Bay Shellfish Protection District in Federal Way, Des Moines, Kent, and SeaTac.

SEPTIC MAINTENANCE REBATE for routine inspections (up to \$300)
Visit <https://kingcd.org/oss> to apply.


SEPTIC REPAIR GRANTS for septic repairs (up to \$5,000) **Contact our Financial Lead at 206-477-1764.**

2021 Fall Sewer Maintenance Message

If flush able wipes can cause a clog then regular toilet paper will do the same thing...

Like · Reply · 3d

Only flush toilet paper and give your pipes a treat!



CITY MAIN PIPE

CLOGGED WIPES

FAT, OIL, GREASE

TREE ROOTS INVASION


PROPERTY OWNER'S RESPONSIBILITY


Side sewer pipes are the homeowner's property and responsibility. Flush toilet paper only; "flushable" wipes or paper towels can clog or break pipes and cause nightmares once sewage starts backing up into your house!

If you suspect your flush has slowed down, contact a plumber or your sewer district for a side sewer pipe inspection.

LAKEHAVEN SEWER DISTRICT:
DE@Lakehaven.org or 253-945-1581

MIDWAY SEWER DISTRICT:
Ryan@midwaysewer.org or 206-824-4960

 Watch the **"INVASION OF FATBERG"** this Halloween!"

Public Health
Seattle & King County 

www.kingcounty.gov/povertybay

This project has been funded wholly or in part by the United States Environmental Protection Agency under assistance agreement PC01J18001-0 to the Washington Department of Health. The contents of this document do not necessarily reflect the views and policies of the Environmental Protection Agency, nor does mention of trade names or commercial products constitute endorsement or recommendation for use.

2109_12736a_halloween_sewer_flyer.pdf

Moving forward: Attention to Environmental Health Impact

- Community-based organizations
 - Cultural Group Participation
 - Families
 - Place-based Educational programs
-

