

Providence ElderPlace -PACE

Programs of **All-inclusive Care for the Elderly**

A decorative graphic at the bottom of the slide consisting of a large, smooth, orange wave shape that curves from the left side towards the right, fading out.



30 states have PACE programs

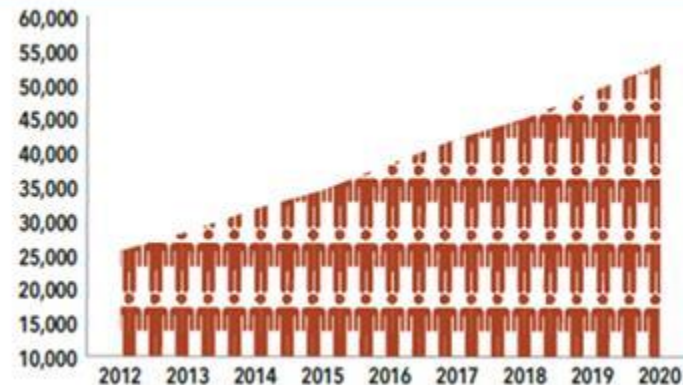
139 Sponsoring Organizations

272 PACE Centers
as of May 2021

PACE ENROLLMENT ELIGIBILITY

- Age 55 and over
- Live in the PACE service area
- Certified to need nursing home care
- Able to live safely in the community with PACE support at time of enrollment

PACE ENROLLMENT APPROXIMATELY 55,000



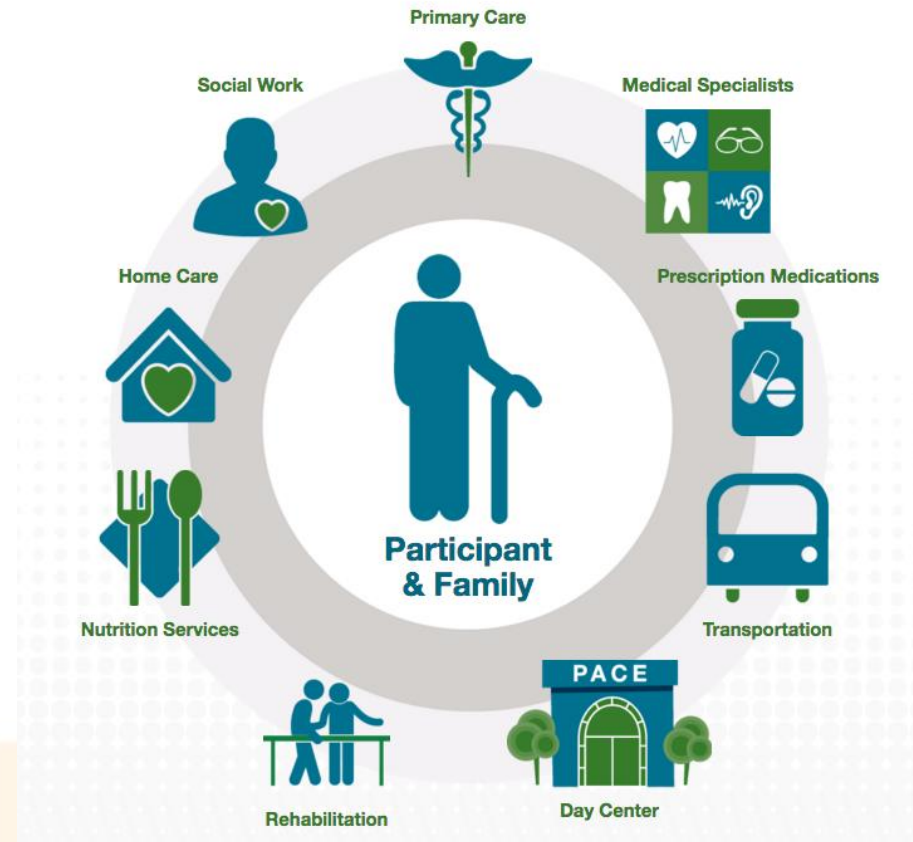
PACE in Washington

Providence ElderPlace serves in King & Spokane Counties

- Currently serving 1036 participants
- 98% are Medicaid, low- income eligible
- Operational for 25 years
- 6 Health & Social Centers



The PACE Care Model



PACE SERVICES: Team-Based Care

An interdisciplinary team (IDT) of professionals works with older adults and caregivers. We focus on coordinating care, prevention, and independence.

- ✓ Physician
- ✓ Nursing
- ✓ Social Worker
- ✓ Registered Dietician
- ✓ Physical Therapist
- ✓ Occupational Therapist
- ✓ Recreation Therapist
- ✓ Speech Therapist
- ✓ Pharmacist
- ✓ Transportation Coordinator
- ✓ Certified Nurse Aids
- ✓ Center Manager
- ✓ Chaplain





Providence ElderPlace - PACE

- Primary & Specialty Medical Care
- Health & Social Center Visits
- Dental, Vision, Hearing Services
- Medications
- Transportation
- In-home Care/ Long-term Care
- Durable Medical Equipment & Supplies
- Skilled Nursing Facility Care

Breakdown of PACE expenditures

Costs covered under Medicare Parts A & B:

- **Skilled Nursing Facilities (subacute)**
- **Radiology**
- **Oxygen**
- **Emergency Room Visit**
- **Ambulance**
- **Hospital Care**
- **Lab**
- **Medical Specialists**

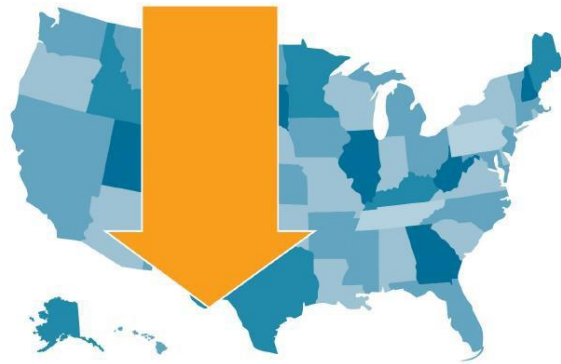
Covered under Medicaid:

- **Mental Health Services**
- **Residential nursing home**
- **In home Personal Care**
- **Hearings Aids – Audiology**
- **Equipment – DME**
- **AFH's & ALF's**
- **Dental Care & Transportation**

Costs Covered under Medicare: Part D

- **Supplies**
- **Medications**

PACE Saves Taxpayer Dollars



States pay PACE programs

13% LESS

than the cost of other
Medicaid services

- States pay PACE programs on average 13 percent less than the cost of caring for a comparable population through other Medicaid services, including nursing homes and home and community-based waiver programs.ⁱ
- In Medicare, payments to PACE organizations are equivalent to the predicted costs for a comparable population to receive services through the fee-for-service program.ⁱⁱ

Data from National PACE Association

Eligibility

55 years +

Reside in PACE
service area

Able to live safely
in the community upon
enrollment

Medicaid/Nursing
facility eligible
COPES/ CFC



About Our Participants

Average Age
79



Dementia
Diagnosis **72%**

Mental Health
Diagnosis **69%**

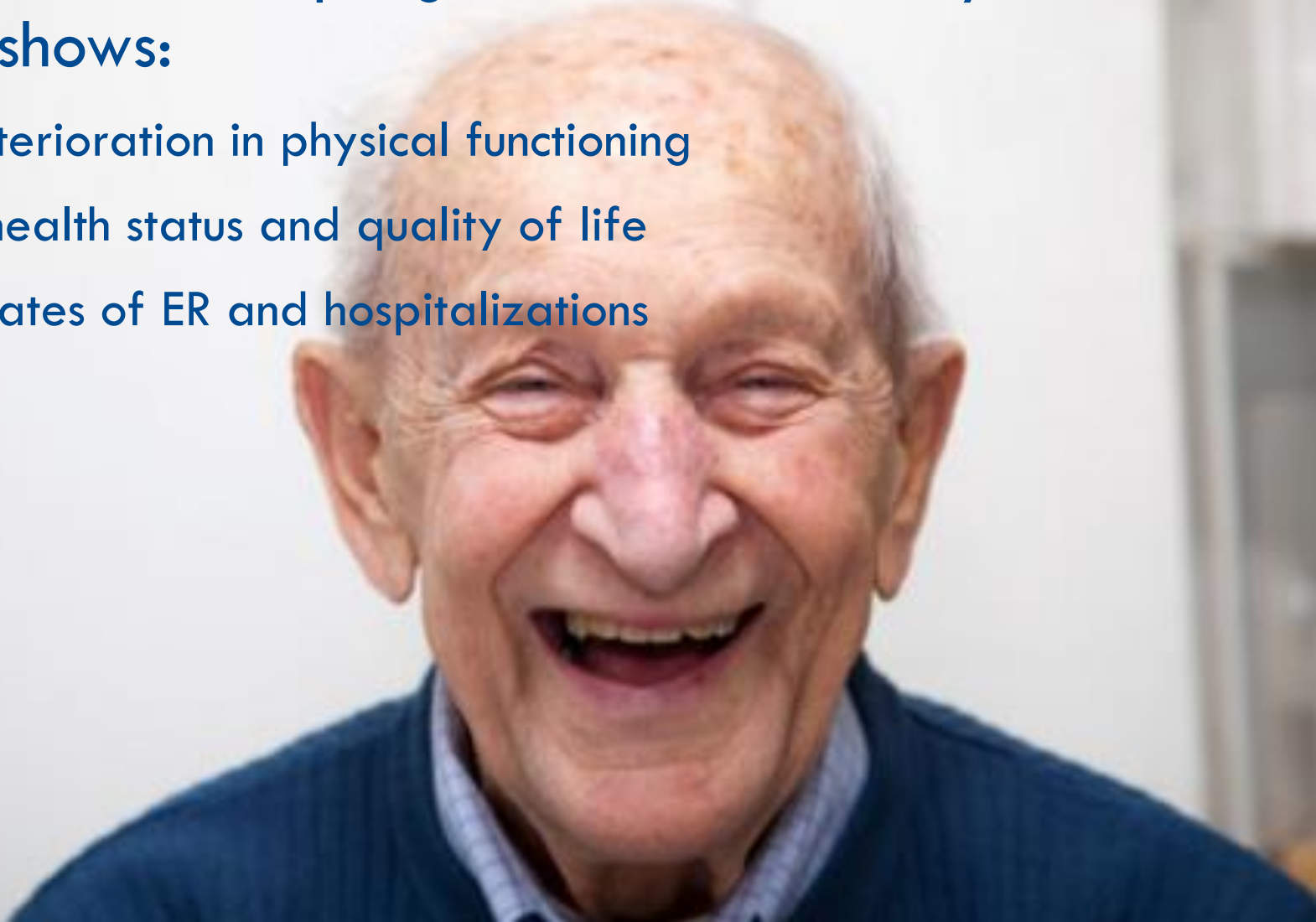
Average length of
time with ElderPlace
3.9 yrs

Integrated Mental Health Services

- On-staff geriatric psychiatrist
- Tele-psychiatrist
- Master's prepared social workers
- Individual counseling
- Substance use disorder treatment
- Therapeutic groups

Evidenced based program with over 30 years of data shows:

- Less deterioration in physical functioning
- Better health status and quality of life
- Lower rates of ER and hospitalizations



PACE & Covid-19

Data.CMS.gov COVID-19 Nursing Home Data <i>Week Ending 5/09/2021</i>				
Total Confirmed Cases	Total COVID-19 Deaths	AVG Total Occupied Beds	NH Confirmed Cases Rate	NH Deaths Rate
652,476	132,305	1,116,722	58.4%	11.8%

NPA Member Organization Data <i>Reporting Period 5/10/2021</i>				
Cumulative Confirmed Cases	Cumulative COVID-19 Deaths	AVG Total Participating PO Census	PACE Confirmed Cases Rate	PACE Deaths Rate
8,372	1,591	42,232	19.8%	3.8%

Providence ElderPlace –PACE WA

Week Ending 5/09/2021

Average Census: 956

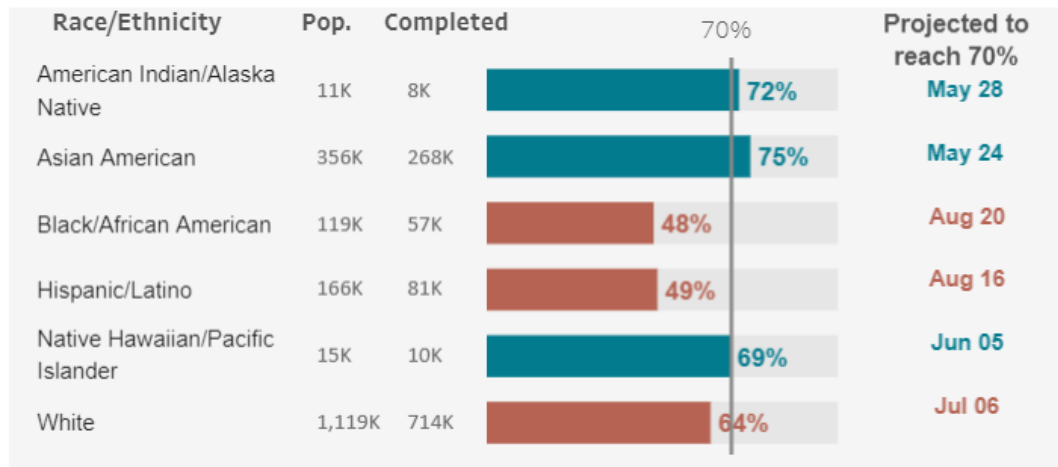
116 total cases

16 deaths

12.1% Confirmed Cases Rate

1.6% Deaths Rate

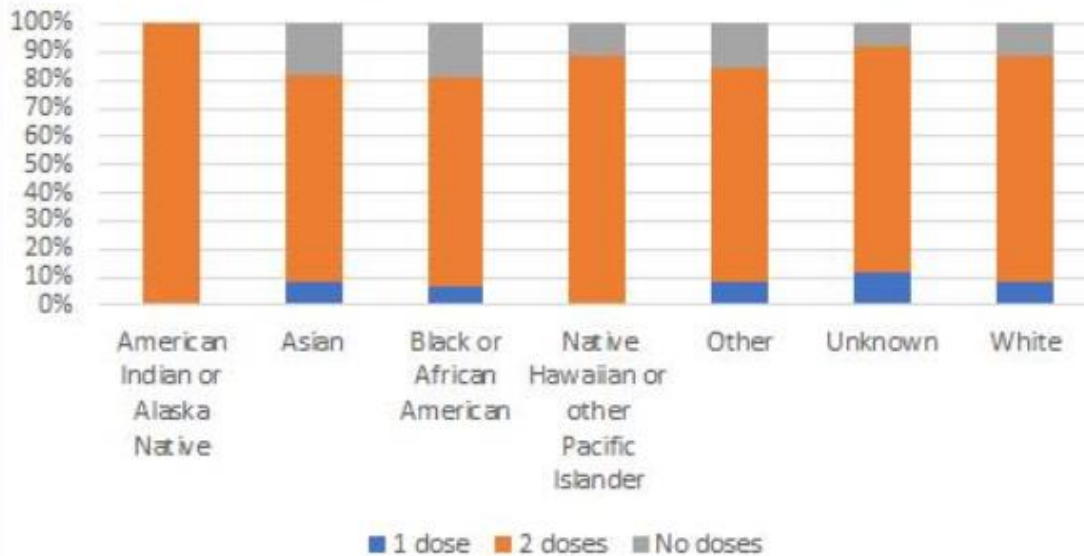
Based on current rates, **70%** of King County residents, **ages 16+**, will have completed their vaccine series by **June 15** and will be fully vaccinated by **June 29**.



King County Covid-19 Vaccinations

Providence PACE Covid-19 Vaccinations

PACE COVID-19 Stats by Race (as of 6/7/2021)



COVID-19: Our Commitment to Serve Safely

The Providence ElderPlace Covid-19 taskforce quickly developed protocols and measures to provide care safely to our current and future participants.

- Providing an adequate supply of PPE & donning/doffing training.
- Offering In-home care & Tele-health.
- Simplifying the enrollment process.
- Collaborating with our contracted providers.
- Offering Recreation Therapy activities via Zoom.



Transportation Services

- Internal department
- Key members of IDT
- 25 drivers
- 25 buses in our fleet
- 400+ trips each day
- Dialysis appointments weekdays/ weekends



97.5%

**family caregivers would
recommend PACE**
to someone in a similar situation



Data from National PACE Association

PACE in the news:

[How COVID-19 Exposed America's Broken Elder Care System | TIME](#)

“ Another program that could expand is PACE, or Programs of All-Inclusive Care for the Elderly, which has centers in 31 states. The program,, provides comprehensive medical and social services for older adults who need significant nursing care but want to live at home. PACE sites get a payment every month for each patient, mostly from Medicaid and Medicare, and the program uses that revenue to take care of all the participants’ needs, including routine doctor’s visits and meals at the PACE adult day center, home health aides, laundry services—and if needed, specialists or hospital visits.”

In our own words:

Our objective is to transform the lives of those we serve and to provide comprehensive and coordinated care for our participants. We want to bring them relationship, to help them age in place, and when needed provide support through end-of-life.

A Providence ElderPlace Success Story

By Jeremy Edmonds

The first time I spoke with Patrick, I had no idea of the impact we would make on each other's lives. Referred by a fellow member of his church, Patrick was living in a SHAG building in north Seattle, struggling to support himself. Working 3rd shift at a Home Depot warehouse to make ends meet, his inability to focus on his health was taking a toll both physically and emotionally. During my first call with him I gathered the routine stats – 71 yrs. old, heart problems, uncontrolled diabetes, debilitating pain in his hip. When he came in for a tour, I was able to sense acute sadness and despondence. Thankfully, in the midst of all that was going on in his life, Patrick decided to give ElderPlace a chance and was open to the changes our program would bring.

After getting him enrolled and settled in a beautiful apartment at Heritage House at the Market, Patrick thrived. During our first lunch “date” in the Market Café, I laid my eyes on a completely different man. Smiling, friendly, speaking to EVERYONE he encountered, and clearly in better health physically, it warmed my heart to see that he had blossomed.

After lunch he walked me to my car and said, “I would be dead if it wasn't for you and the folks at ElderPlace – my blood sugar was so high when I got here; and now that I am well-cared for, it is are under control. I feel so much better that even my sense of humor has come back!” He went on to say (as we passed a street grate pumping out steam), “You know, when I was homeless, these steam grates would have been a place I would look for to sleep on. I was facing eviction when I sign up with ElderPlace, and would have been homeless and sleeping on the street again; I'm not sure I could've survived that.”. Thinking about the possibility of Patrick, homeless at his age and with his health conditions, I realized that he was most likely right. Driving away I teared up thinking about how things might have turned out for him if his friend hadn't told him about us.

Since enrolling, Patrick has faced numerous health challenges, but he has so much fight and determination. I am proud to know that we have fulfilled our promises to him - we know him, we care for him, and we have certainly eased his way. I share this to remind you all of how together we make such a profound difference in our participant's lives.

Referring clients to Providence ElderPlace PACE:

www.providence.org/Elderplace

or

Call 206-320-5325 and ask for intake.

Include your name / email / phone number/ zip code of client.

Questions?

A large, curved, orange graphic element at the bottom of the slide, resembling a stylized horizon or a wave.