

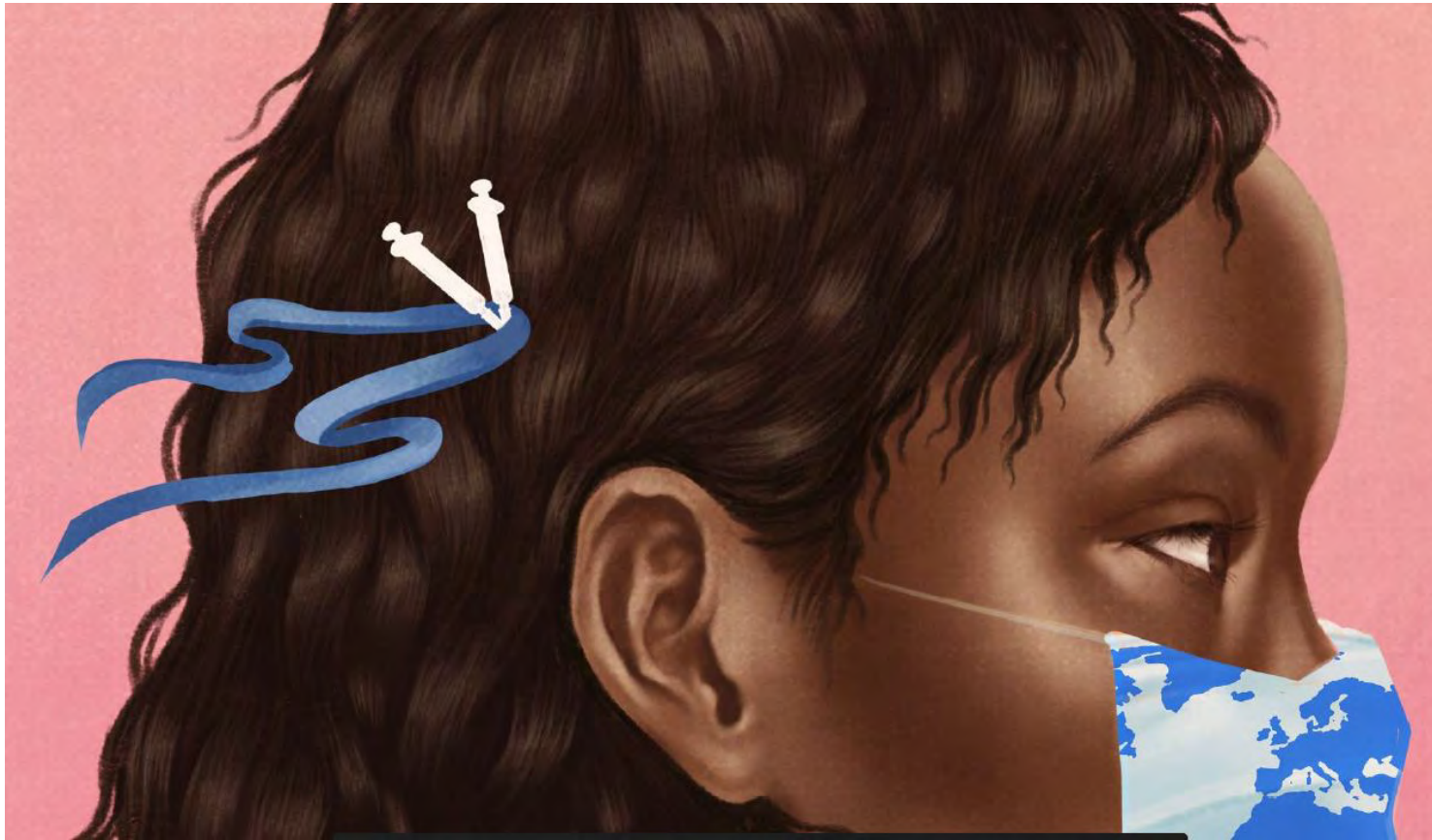


TOGETHER WE FIND OUR WAY

First Friday Forum

January 7, 2021

Amplifer.org image



Upcoming Events

- 01/07 North Hill Espresso (Des Moines)
- 01/08 Vashon Library
- 01/14 SeaTac Community Resource Center
- 01/15 Highland Park Elementary School
- 01/17 MLK Event with NAAM (Garfield High School)



What does enrollment look like
for the King County Network?
November

Apple Health 2,117

Qualified Health Plans (new)
335

Qualified Health Plans
(Renewal) 891

Qualified Health Plans (SEP)
101

Total 3,444

Enrollment Data December

- Apple Health: 1793
- Qualified Health Plans New: 481
- Qualified Health Plans Renewal: 841
- Qualified Health Plan (SEP):

Total 3,116



What are we doing in January?

We have two weeks to target the high insured areas in King County.

1. Radio Interviews/ad's
2. Continue to combine events with COVID vaccinations
3. Blitz targeted areas with flyers about events
4. Facebook/Twitter specific to zip codes
5. CHAP Line will be opened until 11:59 on 01/15/2022.



Take care of all
generations,
get vaccinated.

Program Expansion- ABCD (Access to Baby & Children Dentistry)

Access to Baby and Child Dentistry (ABCD) program will expand to include children with disabilities who are age 0 to 13 and have a Developmental Disabilities Administration (DDA) indicator.

If you'd like more information. Please contact Carol Allen (King County ABCD Coordinator (carol.allen@kingcounty.gov) or Fartun Mohamed (fartun.Mohamed@kingcounty.gov).

For a dental list of King County providers who accept Apple Health:
kingcounty.gov/ABCD.



Household Assistance Request (HAR) Program Changes

- Due to the increase in (+) COVID results, the HAR program will no longer provide housing or utility assistance.
- This program will assist (+) COVID households with food assistance and refer to CHAP (Community Health Access Program) for other assistance.
- Food can be delivered by Safeway or Amazon Fresh.
- Self test results are accepted. Individuals must contact DOH to report their results: 1-800-525-0127.

Let's complete the puzzle!



*is a single piece of the puzzle we recognize as our community,
life. We're connected and reliant in ways we often don't see.
intersect and make up a full, vibrant picture.*



Mammogram Events

- Saturday January 15th (7:30-4:00)
1012 SW Trenton St, Seattle 98106
- Saturday February 5th (7:30-4:00)
104 17th Ave South, Seattle 98144
- Please have clients call for an appointment:
1-800-756-5437.