

**Health Insurance/
Health Care Options-
for clients who are non-citizens
of Washington State**

For clients without documentation

**This presentation is for informational purposes only.
Some programs are King County specific.**

Citizenship & Lawful Presence

A client's citizenship or lawful presence status in the United States is a major factor in determining their eligibility to enroll in coverage through Washington Healthplanfinder and through the Department of Social & Health Services (DSHS).

Citizenship and lawful presence status can determine not only if a client is eligible to enroll in coverage, but also helps determine which program(s) the customer may be eligible for.

What are the options in Washington State?

Most residents will apply for coverage at www.wahealthplanfinder.org. A client could be eligible for Apple Health or a Qualified Health Plan.

Apple Health

- ✓ Apple Health Adults (19-64)
- ✓ Apple Health Children (0-18)
- ✓ Apple Health Pregnancy
- ✓ Family Planning
- ✓ Alien Emergency Medical

Washington State
Health Care Authority

If you're over income for Apple Health—you **maybe eligible** to enroll into a **Qualified Health Plan**. A private plan with monthly premiums, co-payments & deductibles.



Classic Medicaid

(i.e. SSI, Aged, Blind, Disable, Medicare Savings)

Must apply through the Department of Social & Health Services (DSHS)

Deferred Action for Childhood Arrival (DACA)

- **Although individuals on DACA have the right to work and avoid deportation they still do not have an legal status.**
 - **Unfortunately, they are considered undocumented.**

What about clients from the COFA Islands?

People from the COFA Islands are living in the US legally but they do not have a legal immigration status. Therefore, they are considered undocumented. These includes residents from the Republic of the Marshall Islands, the Federated States of Micronesia and the Republic of Palau.

However, our State now has a new COFA Islander program that these residents maybe eligible for.

- COFA citizens who have income less than 133% of the federal poverty level
- Washington residents
- Enroll into a silver level Qualified Health Plan
- Ineligible for other federal or state medical assistance programs.



COFA Islander
Health Care

Family Size 1	Family Size 2	Family Size 3	Family Size 4	Family Size 5
\$1,436	\$1,945	\$2,453	\$2,961	\$3,470

What programs are clients eligible for if they are undocumented?

• Apple Health Children (18 & Under)	Apple Health Pregnancy
Apple Health Alien Emergency Medical (AEM)	Breast Cervical Colon Health Program
Hospital Charity Care	Basic Food Program (In some cases if they have US citizen children or lawfully present children, the children maybe eligible for Basic Food benefits).
ORCA LIFT	Dental Care at King County Public Health Centers
Prescription Discount Card	Energy Assistance Programs

Alien Emergency Medical (AEM)

AEM is coverage for individuals who do not meet citizenship or immigration status requirements.

And for qualified individuals who have not met the 5-year immigration bar & have a qualify medical condition.

- ✓ **A person would have to be eligible for a Medicaid program. However, due to citizenship status they are not eligible.**
- ✓ **If they have an emergent medical condition they could be eligible for AEM.**

What is a qualifying emergency medical condition?

Must have or need at least one of the following):

- A qualifying emergent medical condition such as emergency room care, inpatient hospital admission, or outpatient hospital surgery.
- A cancer treatment plan.
- Dialysis treatment.
- Anti-rejection medication for an organ transplant.
- Long-term Care (LTC) services (prior approval required).

Hospital Charity Care

Is hospital charity care available?

Washington State requires all hospitals to provide free inpatient & outreach care to very low income residents treated in the hospitals.

It also requires that they provide discounts to low income patients.

Washington State Department of Health (DOH) manages the charity care program (360) 236-4210.

- Hospital must develop training programs on their hospital charity care policies.
- Prominently display notices of charity care & translate in all languages spoken within their hospital service area. (10%)
- Notices must be displayed in admitting, patient registration, emergency room, financial services & billing.
- Use plain language summary of the policy & applications must be available on their website.
- Request for income is based on time of health care services.
- **Apply at the hospital where the client received services. Copies of application are in your packet.**

Breast, Cervical & Colon Health Program



**Breast, Cervical & Colon
Health Program**

Saving Lives Through Early Detection

Cancer screening services

Breast and cervical health screening

For women ages 40-64

Colon health screening

For men and women ages 50-64

Eligibility

You may be eligible for a free health exam and cancer screening if the client is:

- ✓ Age 40 to 64 (if you are younger or older please call)
- ✓ No have health insurance
- ✓ Immigration Status isn't a factor
- ✓ Or have a high deductible for follow-up cancer tests
- ✓ Live in King, Kitsap, Clallam, and Jefferson Counties

Community Health Access Program-1-800-756-5437

Other Programs in King County



Reduce Bus Fares



ORCA LIFT is the reduced fare program for adults with qualifying income.

- This program reduces fare to \$1.50 any time of day, for one-or-two zone travel. The reduce fare only applies to travel on Metro Transit, Kitsap Transit, ST Link Light Rail and Seattle Streetcar. Adult clients on Apple Health or Basic Food are income eligible!!!
- \$1.50 Bus Fare & \$54.00 for a monthly bus pass in most cases.
- We can help—contact us!!!

Prescription discount card

King County residents can show it to receive an average of 24% off the retail price of prescription medicine.

- Residents who do not have insurance can show their card to save on all prescription purchases.
- No annual limits placed on use.
- No Application forms or waiting periods.
- No age, income or immigration requirements

It also covers pet prescriptions!!

Other programs clients may be eligible for

Basic Food Program

- If parents are undocumented but they have 1 or more US citizen children, that child(ren) are potentially eligible for Basic Food benefits.

Basic Food is a Department of Social & Health Services (DSHS) program.

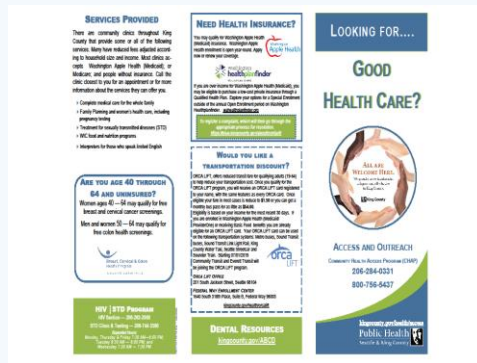
Energy Assistance Programs

- Federal Low Income Assistance Program (LIEAP), if parents are undocumented but they have 1 or more US citizen child(ren) they are potentially eligible.
- City of Seattle Energy Assistance programs do not require immigration status. Please contact us for more information.

Health Care & Dental Access

“Looking for Good Health Care”

This brochure provides a list of Community Health Centers & Public Health locations that will provide a medical & dental home for residents regardless of immigration status.



A copy is provided in your packet.

www.kingcounty.gov/coverage

Public Health Dental Clinics

- The Public Health Dental clinics offers a dental home for undocumented residents living in King County.
- NeighborCare, HealthPoint, SeaMar, Seattle Indian Health Board and International Community Health Services also offers a dental home. Each location sets their cost.
- Please see the brochure “Looking for Good Health Care”.

Who to contact

Public Health-Seattle & King County

- ORCA LIFT
- Breast Cervical Colon Health Program
- Apple Health
- Dental Care for a Public Health Center
- COFA
- Basic Food
- Prescription Discount Card

1-800-756-5437 www.kingcounty.gov/coverage

Program Contacts

For health insurance (Apple Health or COFA), apply online at www.wahealthplanfinder.org

Apple Health is administered by Health Care Authority (HCA), 1-80-562-3022 www.hca.wa.gov

For Basic Food you can apply online at www.washingtonconnection.org.

The Basic Food program is administered by the Department of Social & Health Services (DSHS), 1-800-501-2233. www.dshs.wa.gov

Healthplanfinder is administered by The Washington Health Benefit Exchange (HBE),

1-855-923-4633. www.wahbexchange.org.