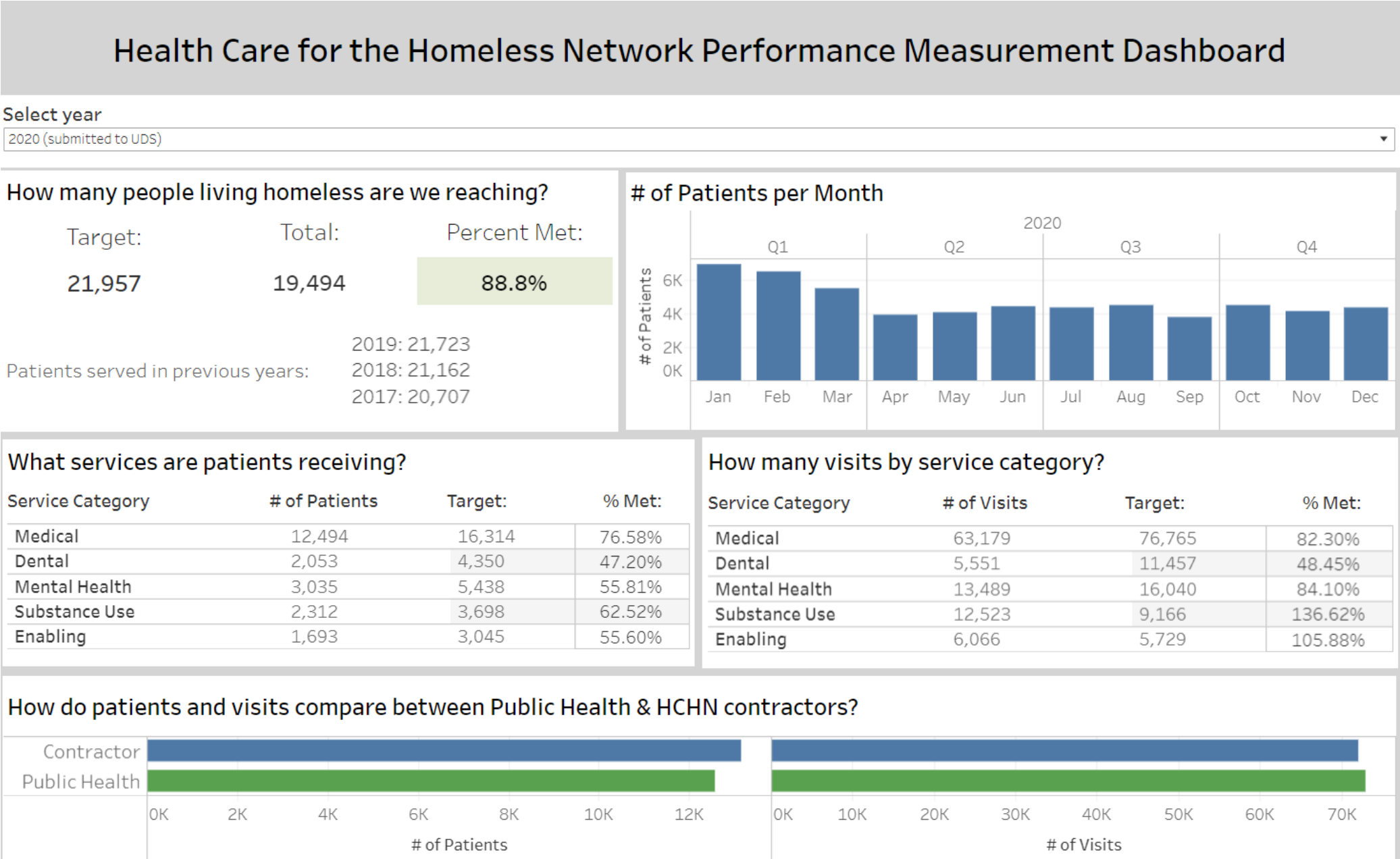
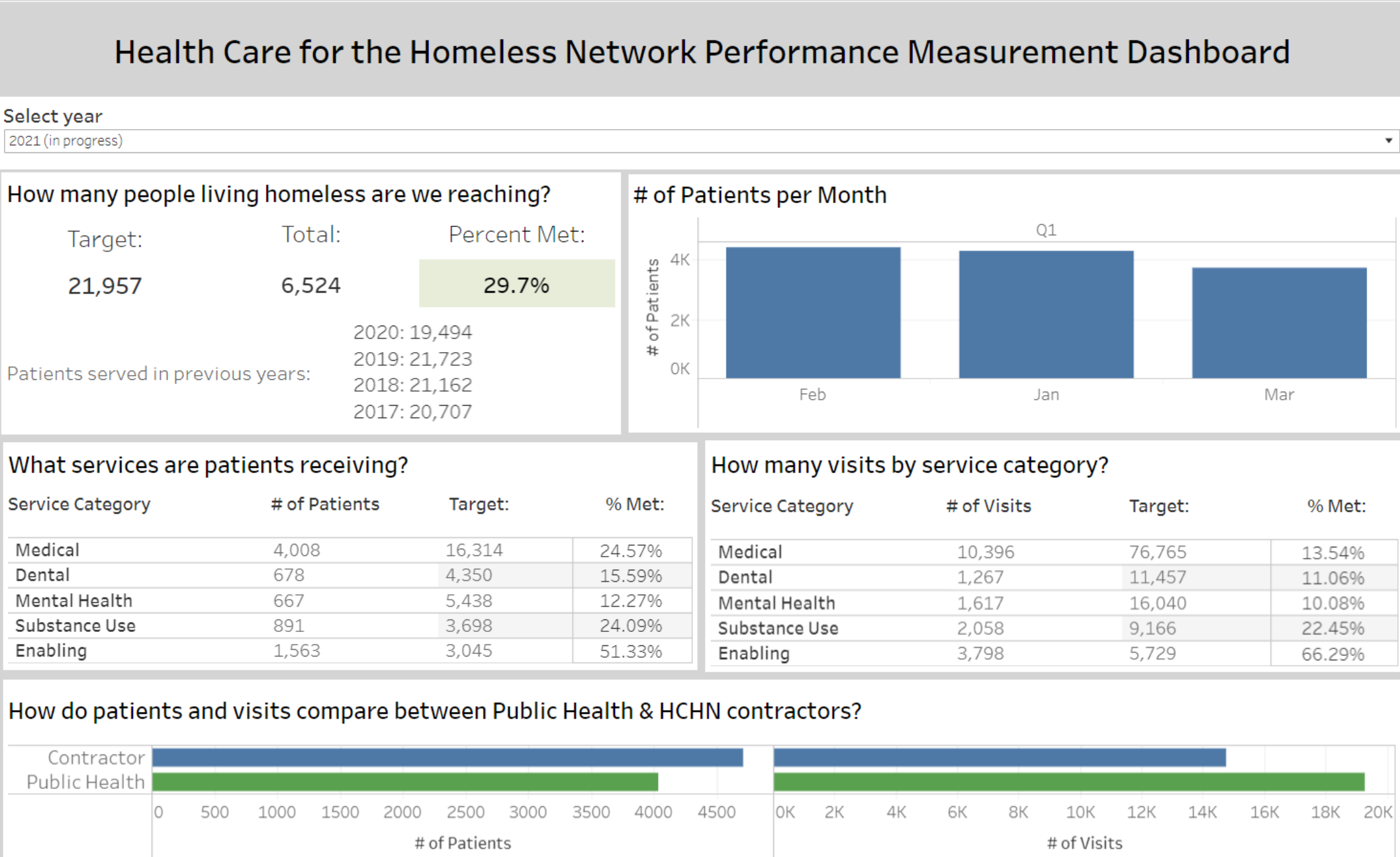


Health Care for the Homeless Network Governance Council
330h Performance Measurement and COVID Response Data Briefing

Tab 1: UDS Performance Measurement - 2020



Tab 1: Performance Measurement – 2021 (in progress)



Tab 2: Interactive Demographics, part 1

Are we reaching people most impacted by homelessness and COVID-19?

Demographics, part 1: Age, Gender, Sexual Orientation, & Veteran Status

[Link to King County COVID-19 Homeless Dashboard](#)

Filter by:

Visit Date

Year

(All)

Quarter

(All)

Month

(All)

Agency, Location, Program, and Service

Contractor

(All)

Agency

(All)

Site Name

(All)

Program

(All)

Service Category

(All)

Additional Patient Demographics

Homeless Status

(All)

Race

(All)

Hispanic/Latinx

(All)

Primary Language Spoken

(All)

330h Scope

Include Incarcerated people with homeless status not in 330h

330h scope only

*King County's Immigrant and Refugee program also not in 330h - no data shown

Age

(As of Jan 1, 2021)

Age Group	% of Patients
Under 1	0.1%
1-5	3.8%
6-11	1.0%
12-17	1.5%
18-24	6.6%
25-35	19.4%
36-50	26.9%
51-64	31.1%
65-75	8.3%
Over 75	1.1%

Gender

Male	12,812	60.72%
Female	8,143	38.59%
Transgender Male	35	0.17%
Transgender Female	64	0.30%
Non-Binary	29	0.14%
Other gender identity	65	0.31%
Unknown	102	0.48%

Sexual Orientation

Lesbian, Gay, or Bisexual	617	2.93%
Straight	4,229	20.08%
Other orientation not listed	138	0.66%
Client refused	406	1.93%
Unknown	17,309	82.20%

Veteran Status

Yes - Military & Armed Forces Service	642	3.04%
No military service	12,700	60.19%
Unknown	7,757	36.76%

of Patients seen between 1/1/2020 and 3/31/2021:

21,099

Tab 3: Interactive Demographics, part 2

Are we reaching people most impacted by homelessness and COVID-19?

Demographics, part 2: Race, Hispanic/Latinx Ethnicity, Language, & Agricultural workers

[Link to King County COVID-19 Homeless Dashboard](#)

Filter by:

<u>Visit Date</u>	<u>Agency, Location, Program, and Service</u>	<u>Additional Patient Demographics</u>	<u>330h Scope</u>
Year (All) ▼	Contractor (All) ▼	Homeless Status (All) ▼	Include Incarcerated people with homeless status not in 330h
Quarter (All) ▼	Agency (All) ▼	Age Group (All) ▼	330h scope only ▼
Month (All) ▼	Site (All) ▼	Gender (All) ▼	*King County's Immigrant and Refugee program also not in 330h - no data shown
	Program (All) ▼	Veteran Status (All) ▼	
	Service Category (All) ▼	Sexual Orientation (All) ▼	

Race

Black/African American	5,111	24.22%
American Indian/Alaska Native	951	4.51%
Native Hawaiian or Pacific Islander	341	1.62%
Asian	829	3.93%
White	10,498	49.76%
More than one race	672	3.18%
Other race not listed	284	1.35%
Unknown	3,817	18.09%

Hispanic/Latinx Ethnicity

Hispanic/Latinx	2,716	12.87%
Non-Hispanic/Latinx	14,501	68.73%
Unknown	3,882	18.40%

Language other than English

Language other than English	1,931	9.15%
English	18,144	85.99%
Unknown	1,670	7.92%

Top 5 Languages

Spanish	1,164
Vietnamese	85
Tigrinya	106
Somali	65
Amharic	78

of Patients seen between 1/1/2020 and 3/31/2021:

21,099

Agricultural workers

Note: any filters applied do not change the number. This number includes only patients from 2020.

of Patients: 87
% of all Patients: 0.45%

Tab 4: Map of HCHN Sites

Are our HCHN sites and teams accessible, equitable, and convenient?

Percent of sites within 1 mile of another community health center

76.4%

Percent of sites within 1 mile of a food bank

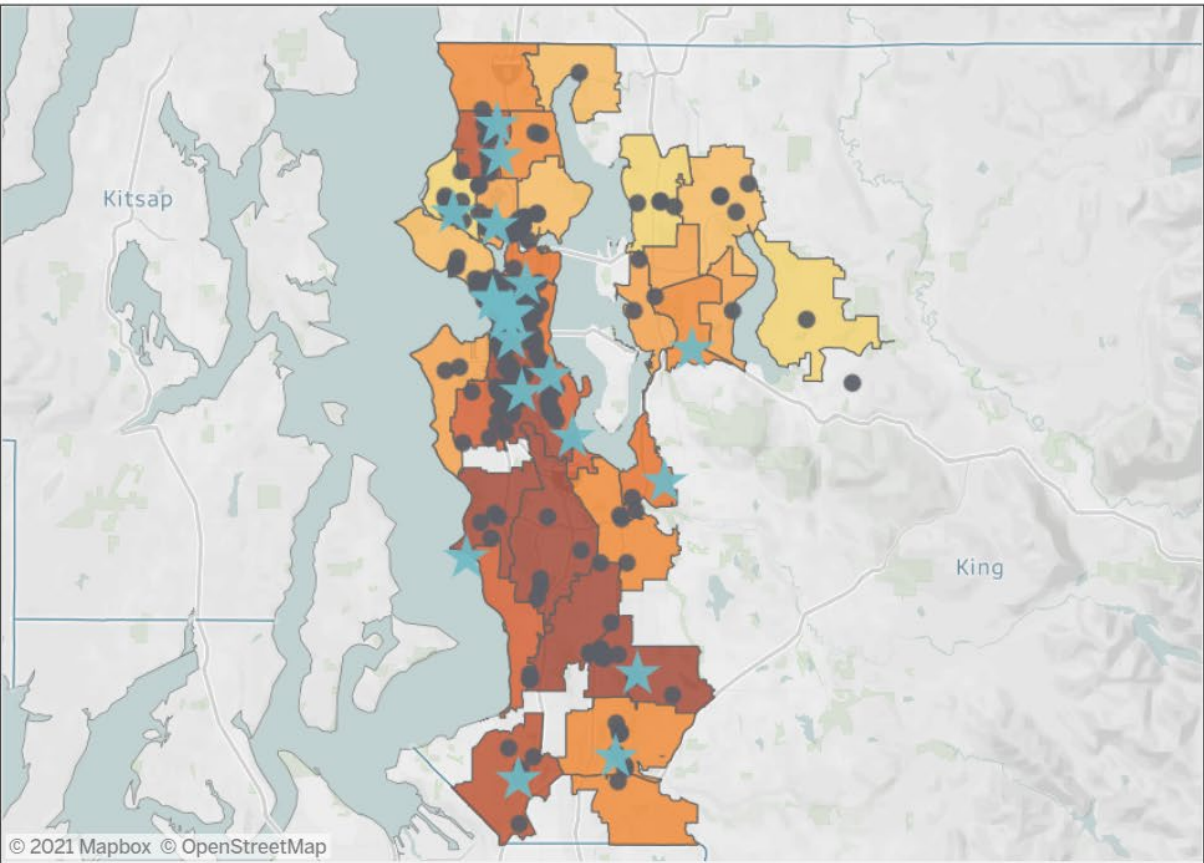
86.9%

Percent of sites within 0.1 miles of a free COVID-19 test site

4.2%

330h sites with on-site COVID-19 testing or access assistance

100.0%



Visits not mapped

21,176 (11.82%) visits between 1/2/2020 and 3/31/2021 were telehealth visits or visits at another site not specified.

Legend

Health Reporting Area Score from Equity Impact Table



330h Site

Yes No

Filters

Site Name

330h Site

(All) ▼

Is there another community health center within 1 m...

(All) ▼

Is there a food bank within 1 mile?

(All) ▼

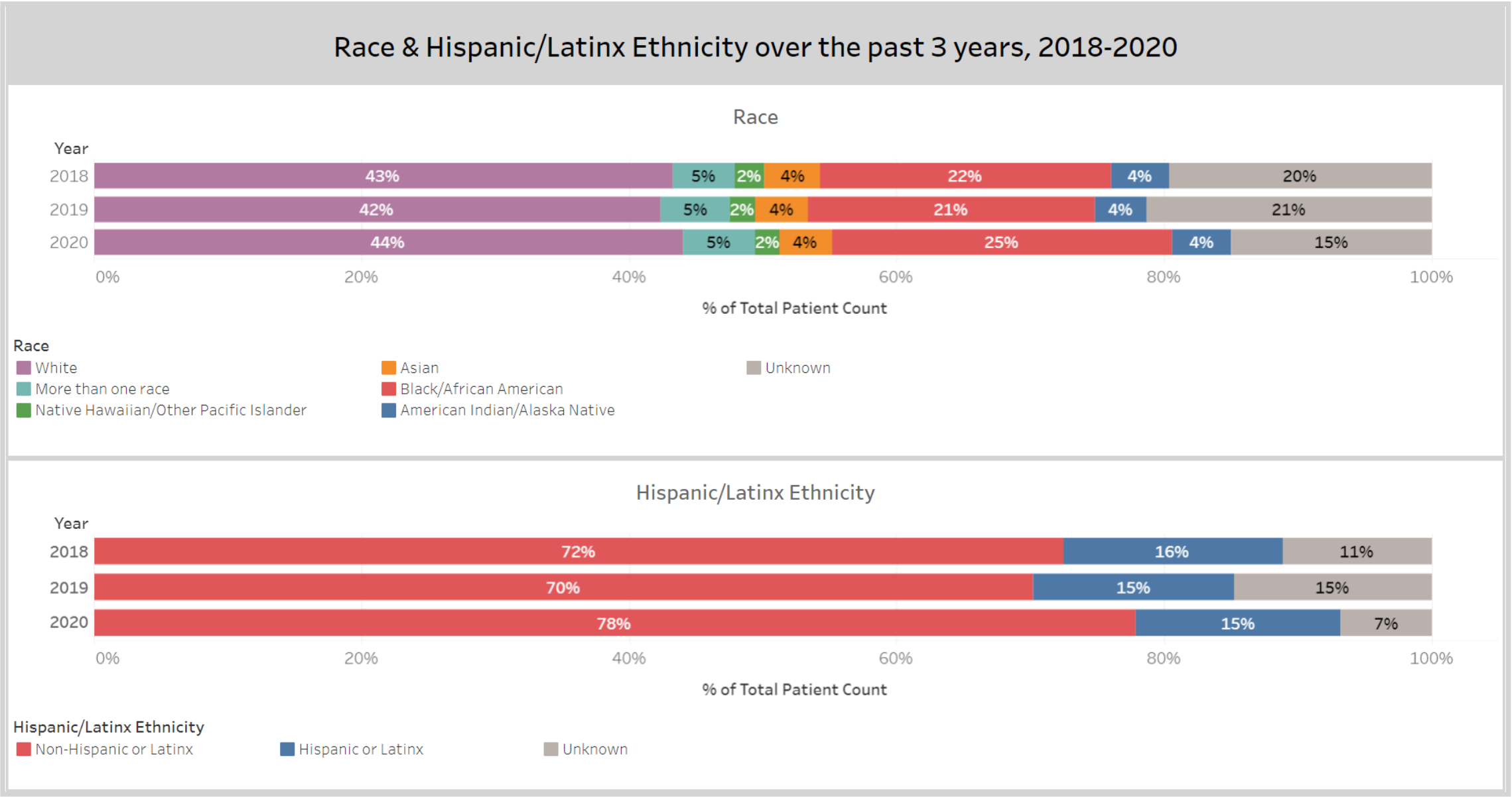
Is there a free COVID-19 testing site w/in 0.1 miles?

(All) ▼

King County COVID-19 Testing Locations:

<https://kingcounty.gov/depts/health/covid-19/testing.aspx>

Tab 5: Demographic Trends, 2018-2020

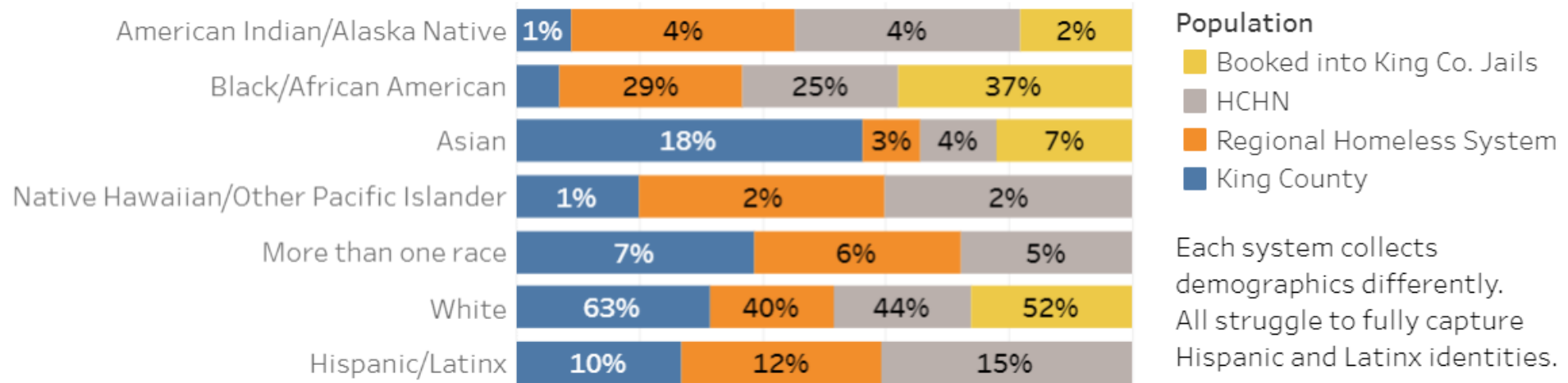


Tab 6: Demographic Comparison

PEOPLE OF COLOR FACE CONTINUED DISPARITIES AND ARE OVERREPRESENTED IN HOMELESSNESS COUNTS

King County is increasingly racially and ethnically diverse. Asian and Hispanic populations have increased in the past 20 years, and even more so in the past 3-5 years. Additionally, the number of people born outside US continues to rise.

However, county population changes and different poverty rates alone do not explain why people of color are persistently overrepresented among those who experience homelessness. Understanding how racism, historical and persistent, impacts the experience of individuals within our health and housing systems is key.



Note: Demographic percentages may not total 100% due to overlap across race and Hispanic/Latinx ethnicity.

[Link to King County Demographics](#)

Tab 7: Data Sources & Notes

Data Sources and Notes

Performance Measurement

Patient totals and service category data for 2020 come from the final submitted 2020 UDS report to HRSA. Data by month and data disaggregating visits between HCHN contractors and public health come from final, full HCHN data from 2020. 2021 Q1 data come from HCHN contractor submitted files and public health, and are not finalized.

Interactive Demographics

Interactive demographic data on age, gender, veteran status, race, ethnicity, and language come from final, full data from HCHN contractors and public health on encounters between January 2020 and March 2021. Static demographic data on migrant and seasonal workers come from the final submitted 2020 UDS report to HRSA.

Map

Site data and patient and visit counts come from final, full data from HCHN contractors and public health on encounters between January 2020 and March 2021. The underlying map is divided by Health Reporting Area and shaded by the King County Equity Impact Awareness Tool. This was designed by the Office of Equity & Social Justice and Headwater Consulting to identify communities particularly vulnerable to recovery from crises like COVID-19. Read more here: <https://www.kingcounty.gov/elected/executive/equity-social-justice/tools-resources.aspx>

Demographic Trends

2018, 2019, and 2020 race and Hispanic/Latinx ethnicity data are from final submitted UDS reports to HRSA.

Demographic Comparison

King County: data are from King County's Office of Economic and Financial

Analysis <https://www.kingcounty.gov/independent/forecasting/King%20County%20Economic%20Indicators/Demographics.aspx>

HCHN: data are from 2020 final submitted UDS reports to HRSA.

Regional Homeless System: data including households experiencing homelessness and receiving services captured in the Homeless Management Information System as of 2/1/2020 <https://regionalhomelessssystem.org/regional-homelessness-data/>

King County Jail: data are from King County Department of Adult and Juvenile Detention report from December 2020

King County Homeless Facility Universe Dashboard

Homeless Facility Universe Summary

The tabs in this dashboard show data on homeless service sites, their proximity to COVID-19 testing and other health care services, and where response teams are being deployed.

The homeless response universe includes facilities that fall into four broad categories:

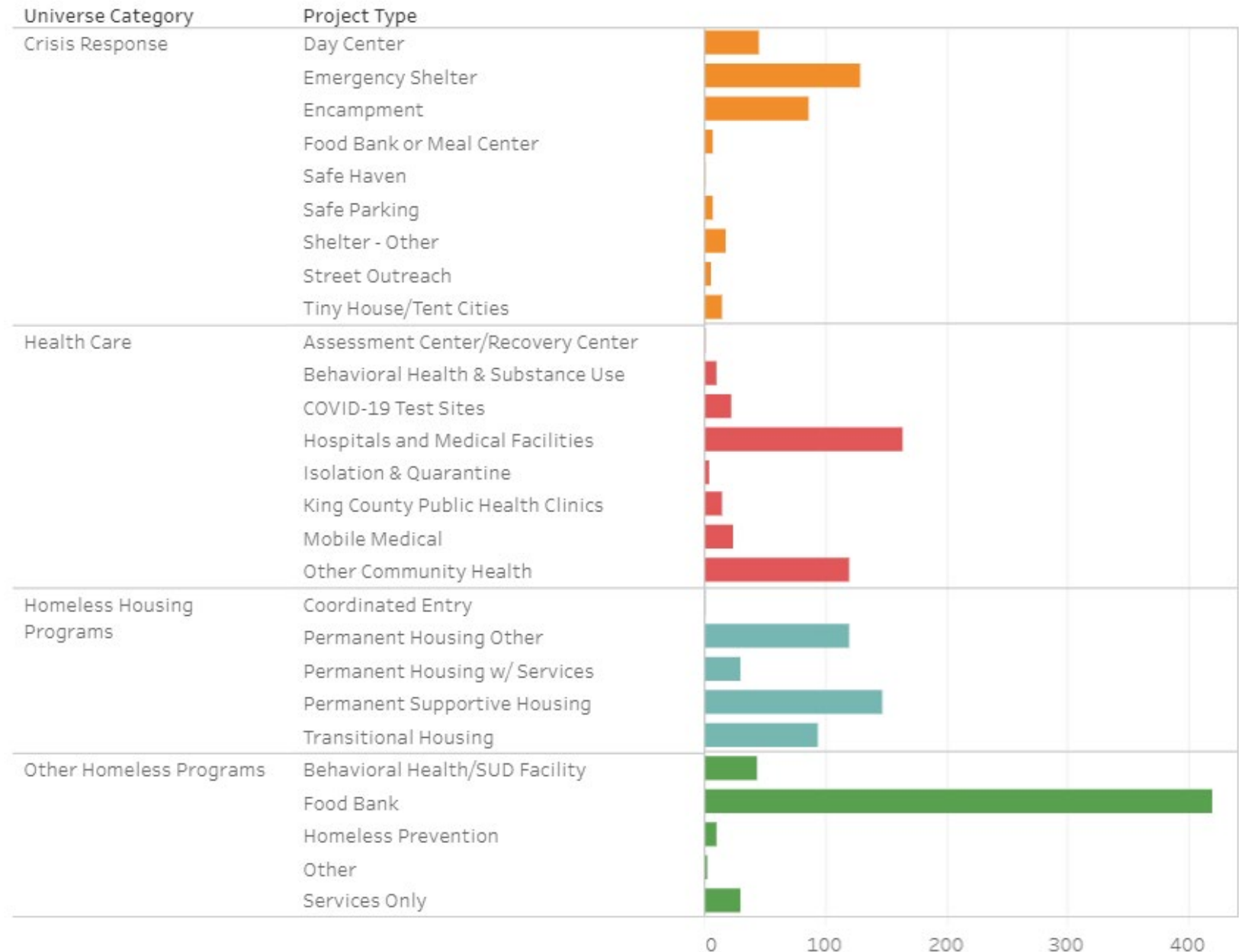
- 1) crisis response (includes shelters, day centers)
- 2) homeless housing programs (includes permanent supportive housing, transitional housing)
- 3) health care (includes mobile medical, hospitals, King County public health centers)
- 4) other homeless programs (includes food banks and other services)

Total number of unique, open facilities in the homeless response universe in King County.

1,590

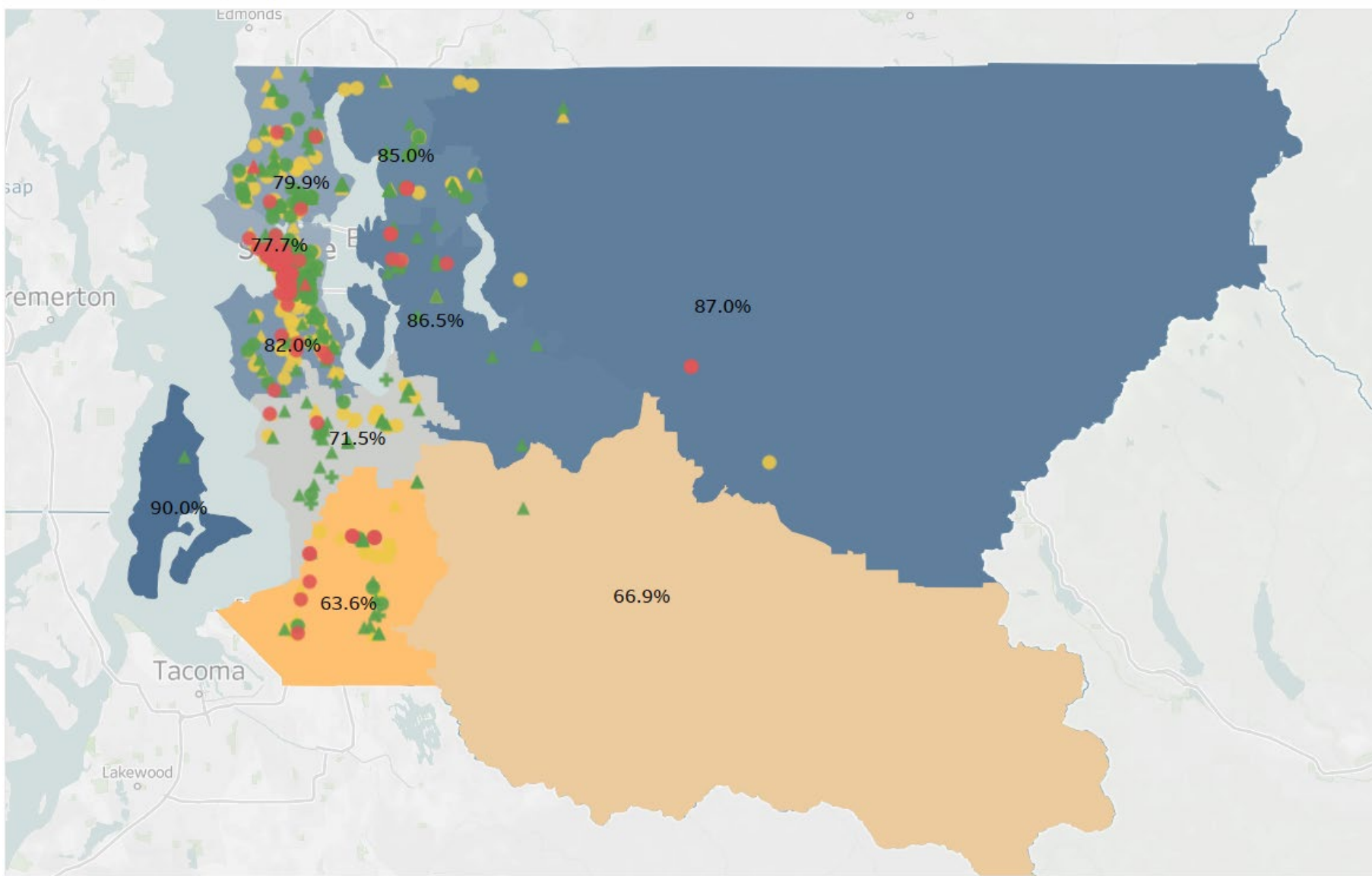
Facilities by Category & Project Type

Crisis response, homeless housing programs, and other homeless programs (excluding food banks) are included in COVID response prioritization efforts



Homeless Service Sites & King County COVID-19 Vaccination Summary

Last Updated: 6/17/2021 10:49:11 AM



This map & site list displays **864** distinct homeless service facilities, against King County COVID-19 vaccination rates by region.

HIGH	MEDIUM	LOW
85	317	465




Vaccination
(% 12+ with at least 1 dose)

0.0%  100.0%

Final Priority

-  HIGH
-  LOW
-  MEDIUM

Universe Category

-  Crisis Response
-  Homeless Housing Programs
-  Other Homeless Programs

King County COVID-19 Homeless Response Summary, as of June 17, 2021

	TESTING	HEART	HEART-E (Encampment)
Total	18,156 tests	635 visits	13 visits
2020	11,799 tests	401 visits	
2021	6,357 tests	234 visits	13 visits

Vaccination

- Mobile vaccine teams:
 - Public Health, including Encampment
 - EMS partners, including Seattle Fire Department
 - Harborview
 - Medical Teams International
- 4,000+ doses administered
- 381 sites visited