



King County
Local Services

How can we serve you?



King County Local Services

Community Service Area Town Hall Meeting

West King County – Federal Way

Tuesday, Sept. 8, 2020

Zoom meetings – housekeeping

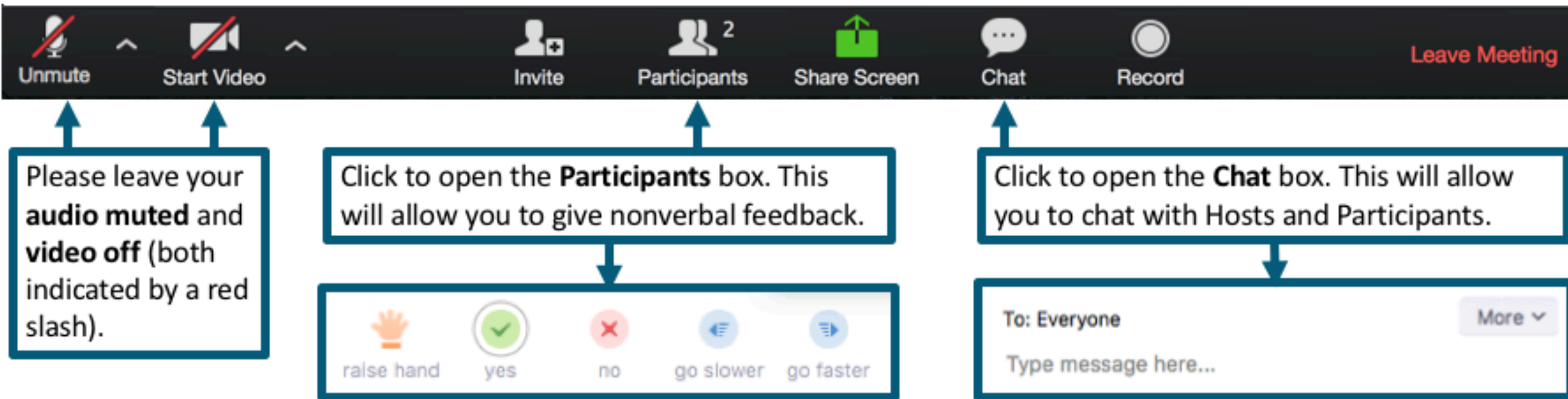
- Everyone starts with permission to use video and audio.
- Chat with everyone or a specific individual.
- We can hear you. *Mute your microphone please.*
- We can see you. *Turn off your video if you don't want to be seen.*
- Facilitator/Host can control all functions.
- Be succinct and clear. Use an appropriate volume.

Technology can be challenging and we are all trying our best.

Listen to Aretha: R-E-S-P-E-C-T



Zoom meetings – functions



Welcome

John Taylor, Director

King County Local Services



King County
Local Services

Schedule

- | | |
|-------------------------------|-------------------------------------|
| 1. Welcome | Local Services Director John Taylor |
| 2. Opening remarks | Councilmember Pete von Reichbauer |
| 3. Elections | Chief of Staff Kendall LeVan Hodson |
| 4. Assessor | Assessor John Wilson |
| 5. Sheriff's Office | Captain Abigail Steele |
| 6. County COVID-19 Update | Anne Burkland |
| 7. Fiscal State of the County | Director Dwight Dively |
| 8. Local Services Updates | Director John Taylor |
| 9. King County Briefings | Department Staff |
| 10. Q&A / open house | |
| 11. CM Closing Remarks | CM Pete von Reichbauer |
| 12. Thanks and next steps | Director John Taylor |





Councilmember **Pete von Reichbauer**

District 7

Pete.vonReichbauer@
kingcounty.gov

Facebook:
[www.facebook.com/
pete.vonreichbauer](https://www.facebook.com/pete.vonreichbauer)



King County
Local Services

King County Elections



Kendall Hodson

Chief of Staff, KCE

206-263-9706 or 206-296-VOTE

Kendall.LevanHodson@kingcounty.gov



Follow us @KCElections



King County
Local Services

Presidential election preview

- **October 14** - Ballots and voters' pamphlets are mailed (state pamphlets mailed week before)
- **October 15** - Ballot drop boxes open countywide
- **October 26** - Deadline to register or update information online or by mail for this election
- **November 3 Election Day** – Ballots must be postmarked by today or returned to a ballot drop box by 8 p.m.
 - Voters may register or update their information in-person at a Vote Center until 8 p.m.
 - Ballot drop boxes close at 8 p.m. sharp
- **November 24** – Election certification



Hot topics



- United States Postal Service
- Ballot Drop Boxes
- COVID-19 changes
- Vote Centers
- Results



What you can do:

- Make sure your registration is up to date — votewa.gov
- Call us 206-296-VOTE or go online if you don't see your ballot by October 19
- **Vote early!**
- Help your friends and family make a plan to vote





John Wilson King County Assessor

Contact:
206-296-7300 or
assessor.info@kingcounty.gov



King County
Local Services

We are still available to serve you!

- For virtual services, email the Assessor's Office at assessor.info@kingcounty.gov, call 206-296-7300, or visit www.kingcounty.gov/depts/assessor.
- Apply online for property tax exemptions at taxrelief.kingcounty.gov. Or email Exemptions.Assessments@kingcounty.gov or call 206-296-3920.
- If you have a complex issue that requires a meeting with our staff, call or email to set up an appointment.
- For property tax payment changes, please visit [Finance and Business Operations](#).



Residential home values have not been significantly impacted by Covid-19 to date. Commercial properties are a different story

- Overall, home values and sale prices have been relatively flat compared to last year.
- As always, values vary from city to city and neighborhood to neighborhood.
- One significant factor in residential home values in King County is the increase in values in Seattle suburbs, especially in the south end.
- While housing values have remained relatively steady so far, some commercial sectors have had their values severely impacted. These changes in value will be reflected in the 2021 assessed value for taxes payable in 2022.



Eligibility for the Senior Property Tax Reduction Program has been expanded, and you can apply online

- The annual household income limit is now \$58,423 including Social Security and other sources.
- Born in 1958 or earlier, or disabled and unable to work in 2019 or earlier
- Own the residence as of 12/31/2019. Occupy as a primary residence 9 months each year

Go to TaxRelief.kingcounty.gov to apply online



Let us know if the value of your commercial property was affected by COVID-19 restrictions

- Housing values have remained steady
- Some commercial sectors have had their values significantly hammered by being temporarily closed or their operations constrained.
- Changes in value caused by COVID will be reflected in the 2021 assessed value for taxes payable in 2022.
- To help us accurately capture the effects COVID:

Commercial taxpayers can report COVID impacts here: www.kingcounty.gov/COVID-value-review



King County Sheriff's Office Southeast Precinct



Major Patrick Butschli, Precinct Commander

Captain Abigail Steele, Patrol Operations

Captain Eric Muller, Investigations

King County Sheriff's Office Southeast Precinct

- Precinct 3 covers a geographical area of approximately 700 square miles
 - I-90 to the North
 - I-5 to the West
 - Pierce County to the South
 - Kittitas County to the East
- Auburn, Kent, Renton, and other incorporated cities fall within the precinct but have dedicated police services

King County Sheriff's Office Southeast Precinct

- In addition to the unincorporated areas, the King County Sheriff's Office provides contract police services to the cities of Covington, Maple Valley, Newcastle, the Town of Beaux Arts Village, and the Muckleshoot Tribe
- Precinct Three provides School Resource Officers to the Liberty and Kentlake High Schools.
- Kentwood High School, Tahoma High School the Muckleshoot Tribal School utilized contract School Resource Officers
- Precinct Three facilities are in the City of Maple Valley.
- Special Operations areas of SWAT and the Bomb Disposal Unit headquarter out of Precinct Three

King County Sheriff's Office Southeast Precinct

➤ Unincorporated

- 52 Deputies
- 2 School Resource
- 8 Patrol Sergeants
- 7 Detectives (2 DV Unit)
- 2 Detective Sergeants
- 2 Captains

➤ Maple Valley

- 12 Deputies
- 1 School Resource
- 1 Traffic Officer
- 2 Patrol Sergeants
- 3 Detectives
- 1 Captain

➤ Covington

- 12 Deputies
- 1 School Resource
- 2 Sergeants
- 1 Detective
- 1 Traffic Officer

➤ Newcastle

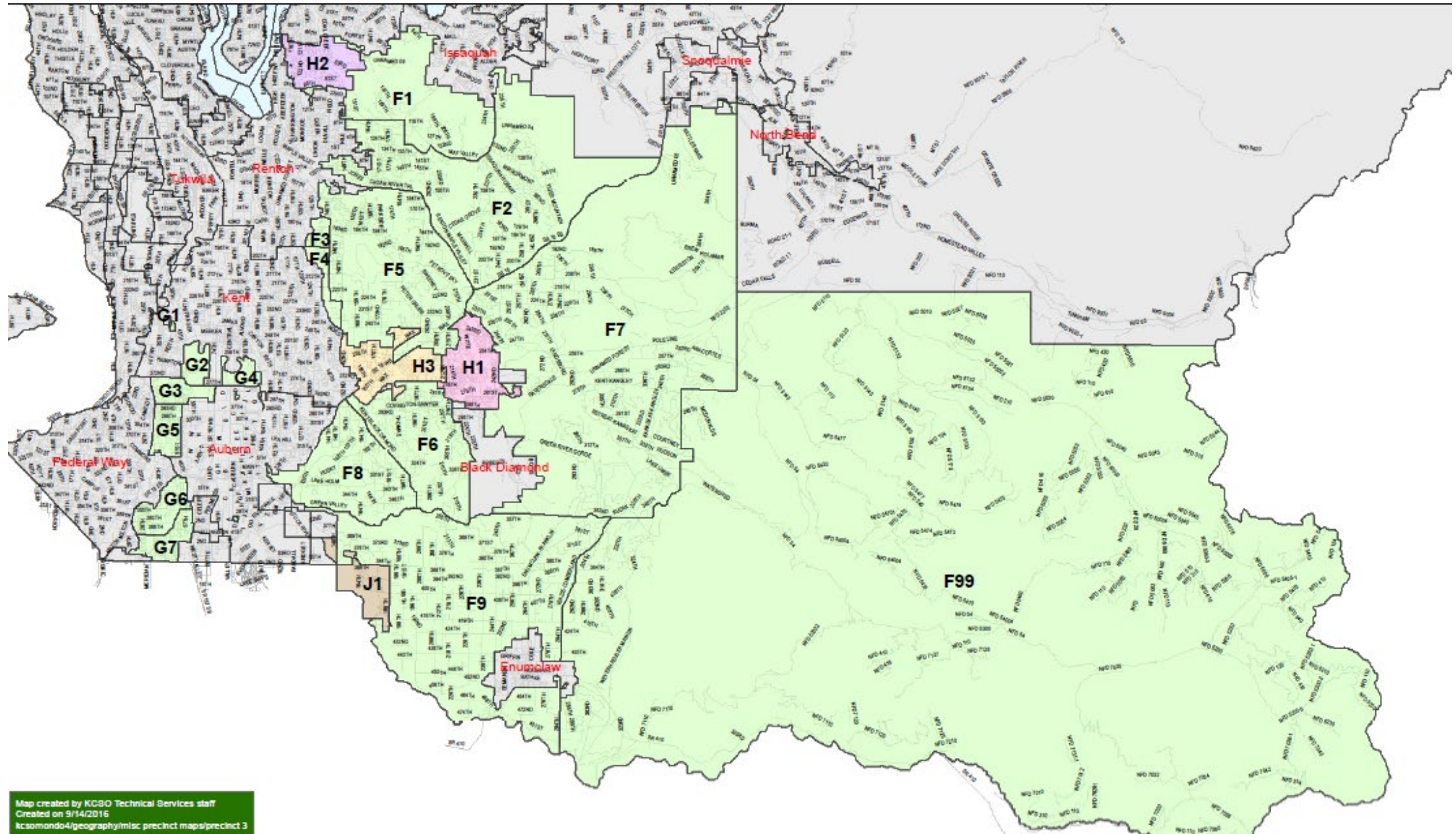
- 8 Deputies
- 1 Sergeant
- 1 Detectives
- 1 Motor Officer

➤ Muckleshoot

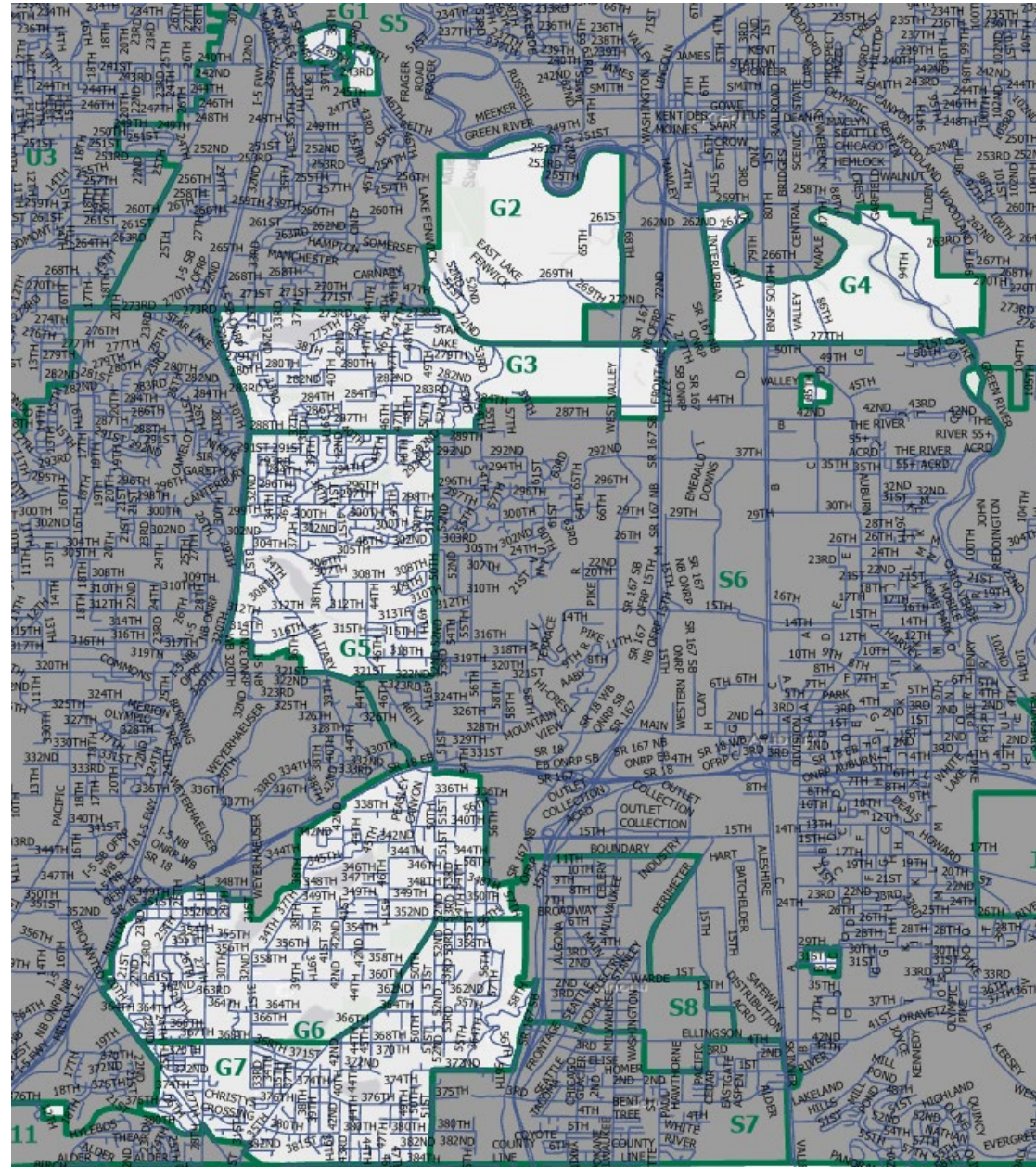
- 11 Deputies
- 1 School Resource
- 1 Sergeant
- 2 Detectives

Precinct Three Totals : **136 Commissioned** **4 Professional Staff**
KCSO Total: 1203 **789 Commissioned** **414 Professional Staff**

Southeast Precinct & Surrounding Areas



G (George) Sector



G Sector Property Crimes

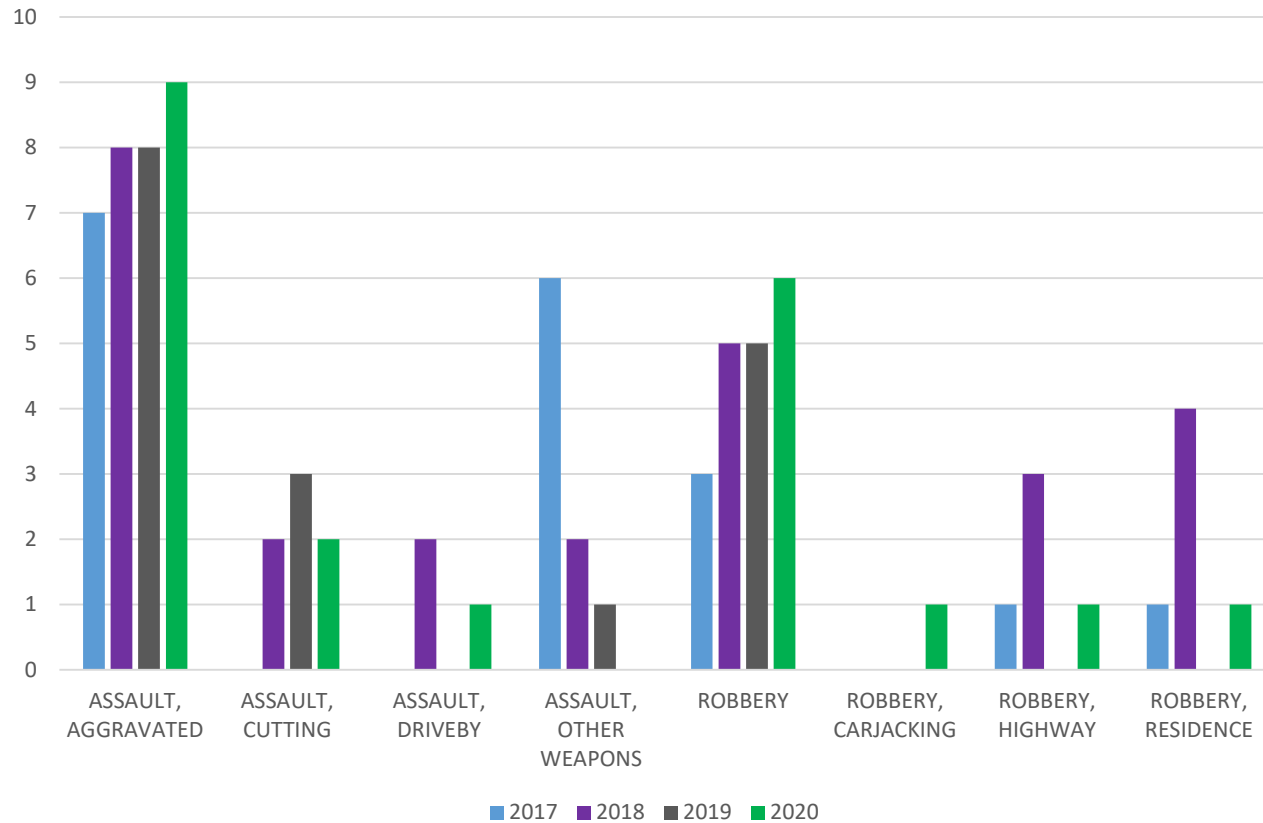


JANUARY TO JUNE COMPARED FROM 2017 TO 2020					
Call Type	2017	2018	2019	2020	Total
BURGLARY, COMMERCIAL	5	10	6	12	33
BURGLARY, RESIDENTIAL	85	65	39	48	237
CONTROLLED SUBSTANCE VIOLATION	4	9	7	3	23
LARCENY, TFA	54	46	44	23	167
VEHICLE THEFT	39	61	37	38	175
VEHICLE PROWLER	5	6	2	3	16
Total	192	197	135	127	651

UNEMPLOYMENT FRAUD IMPACTS IN G SECTOR	
Identity Theft Reports:	Total
2019 (Full Year)	13
2020 (Year to date)	141

G Sector Persons Crimes

Persons Crimes January to June 2017-2020



JANUARY TO JUNE COMPARED FROM 2017 TO 2020					
Call Type	2017	2018	2019	2020	Total
ASSAULT, AGGRAVATED	7	8	8	9	32
ASSAULT, CUTTING	0	2	3	2	7
ASSAULT, DRIVEBY	0	2	0	1	3
ASSAULT, FIREARM	2	0	4	0	6
ASSAULT, OTHER WEAPONS	6	2	1	0	9
ROBBERY	3	5	5	6	19
ROBBERY, CARJACKING	0	0	0	1	1
ROBBERY, HIGHWAY	1	3	0	1	5
ROBBERY, RESIDENCE	1	4	0	1	6
Total	20	26	21	21	88

Public Health – Seattle & King County

Anne Burkland- Director of Government Affairs

Anne.Burkland@Kingcounty.gov



COVID-19 information

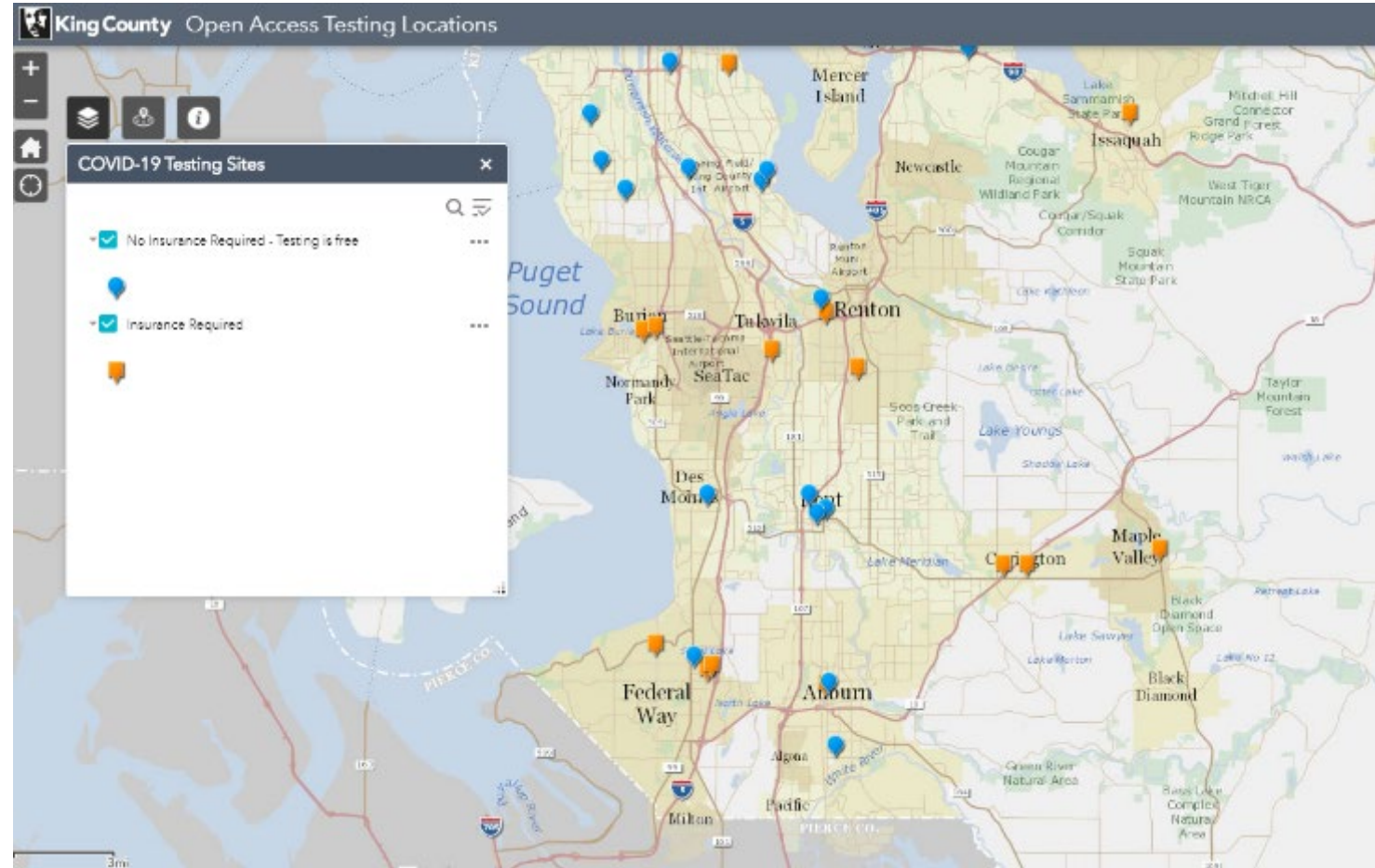


COVID-19 testing

King County free testing sites:

<https://www.kingcounty.gov/depts/health/covid-19/care/testing.aspx>

206-477-3977
(language line available)



King County
Local Services

Protecting yourself and others



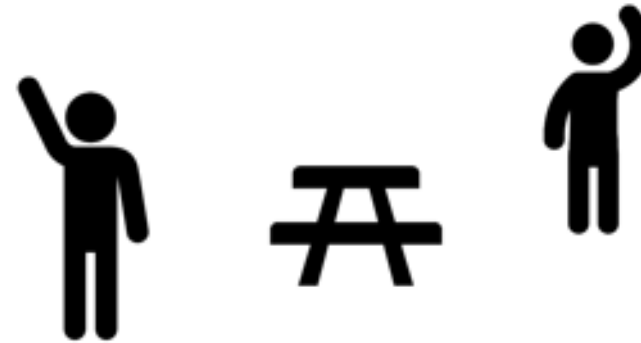
wear masks



social distancing



stay home



keep gatherings small

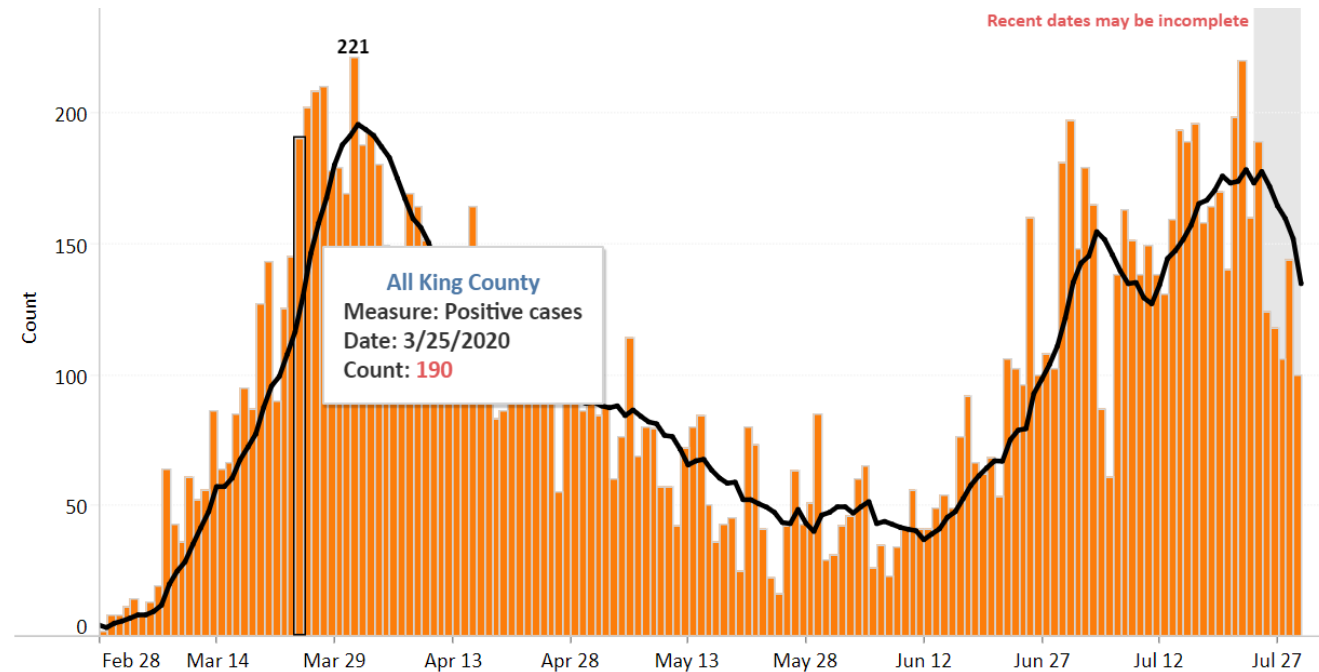


Current trends and data

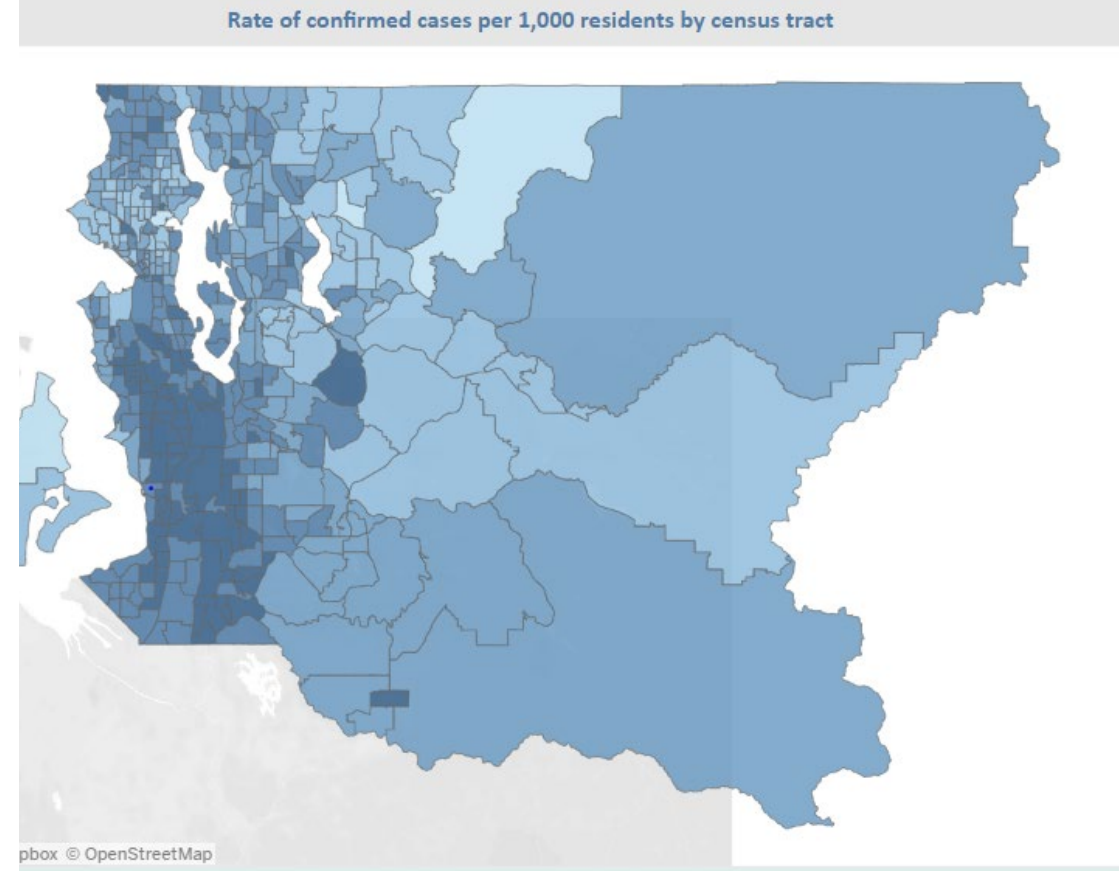
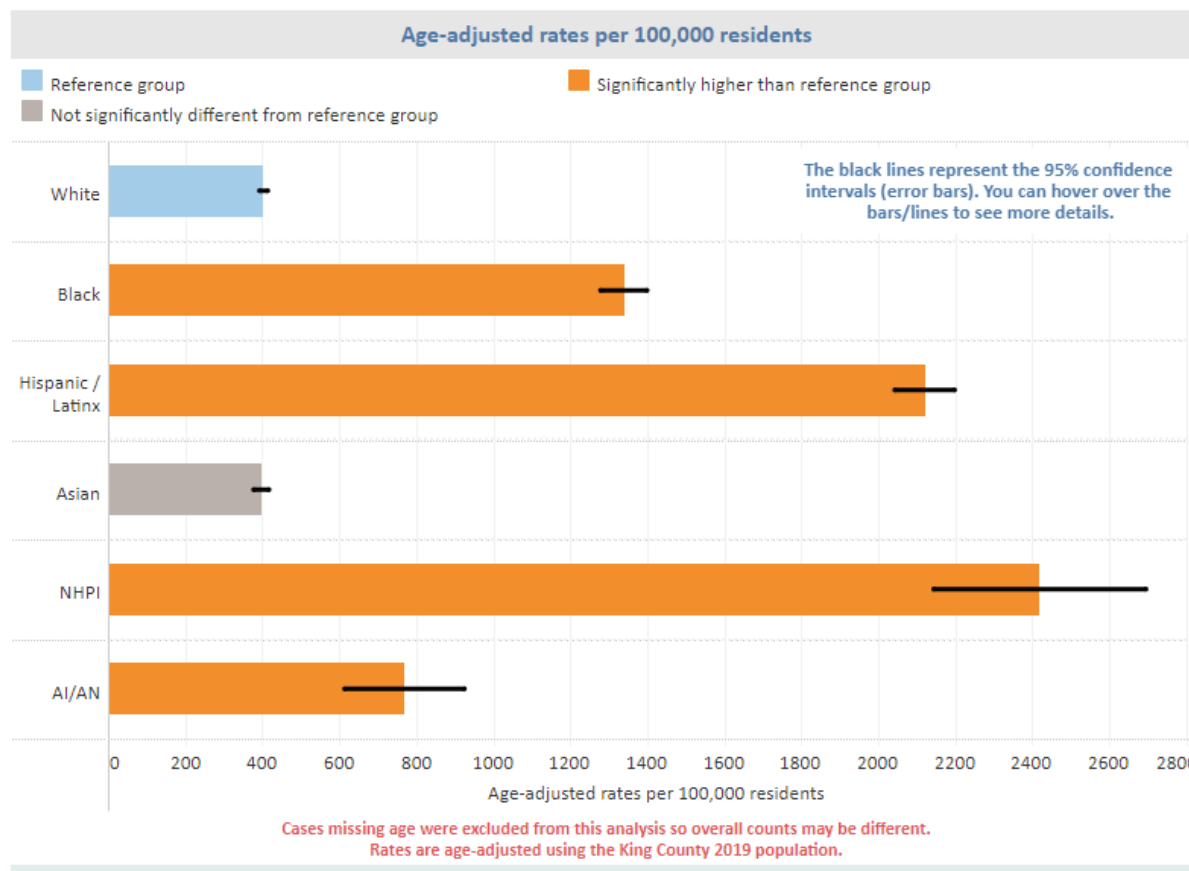
King County's COVID-19 data dashboards

The daily summary dashboard can be searched by geography:

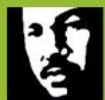
<https://www.kingcounty.gov/depts/health/covid-19/data.aspx>



COVID and racial inequities



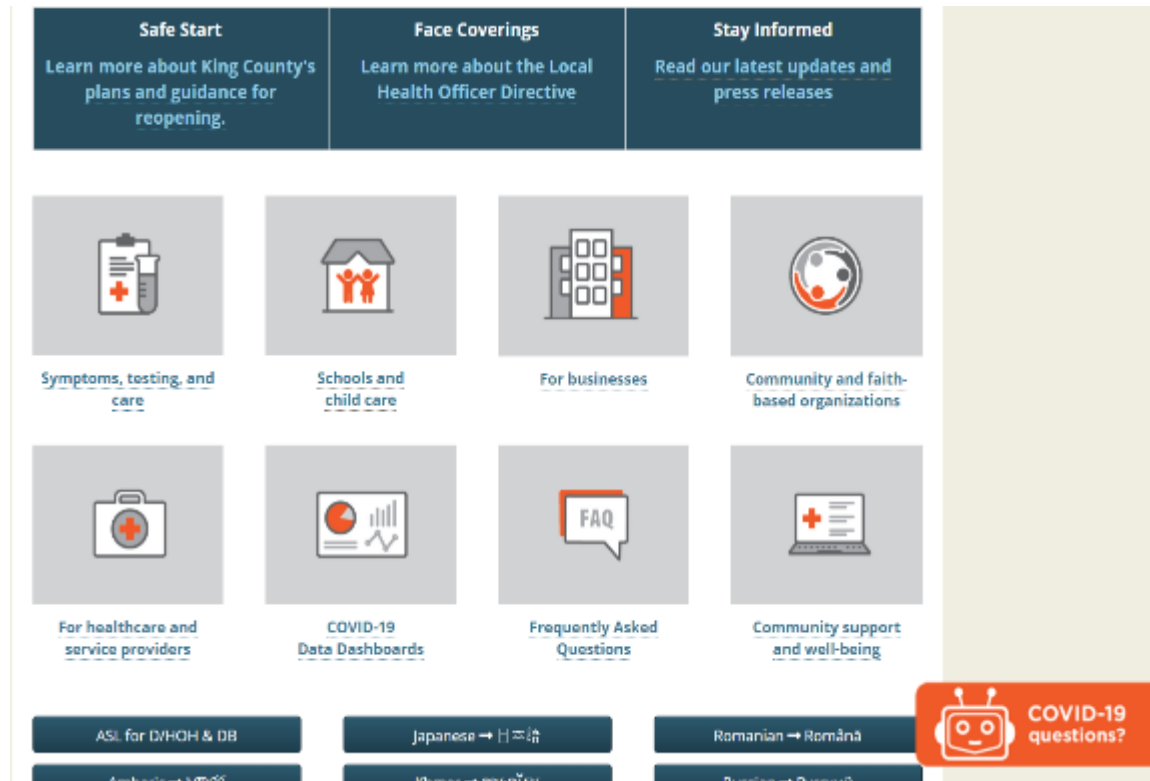
<https://www.kingcounty.gov/depts/health/covid-19/data/race-ethnicity.aspx>



King County
Local Services

Additional resources

- Subscribe to Public Health's website: www.kingcounty.gov/covid
- Subscribe to the Public Health blog: www.publichealthinsider.com
- King County COVID-19 data dashboards: www.kingcounty.gov/covid/data
- Information on face coverings: www.kingcounty.gov/masks
- Information about COVID-19 testing: www.kingcounty.gov/testing
- Follow us on social media @KCPubHealth [Facebook](#), [Insta](#), and [Twitter](#)
- Healthier Here COVID-19 Resource Hub: www.healthierhere.org/covid
- WA State Dept of Health: www.doh.wa.gov/Emergencies/Coronavirus
- WA State: <https://www.coronavirus.wa.gov/>



Questions?

Contact us about COVID-19

- **Medical questions related to COVID-19?**

Contact the Novel Coronavirus Call Center between 8 AM to 7 PM at 206-477-3977.

- **Non-medical questions about COVID-19 including compliance and business related issues?**

Contact the King County COVID-19 Business and Community Information Line (Monday – Friday) 8:30 AM – 4:30 PM at 206-296-1608.

- **General questions about COVID-19 in Washington State**

Contact the Washington State Novel Coronavirus Call Center at 800-525-0127.

- **Send us an email* using our [online form](#) or email us directly at coronavirus@kingcounty.gov**

*Due to a large number of incoming emails regarding COVID-19, we may not be able to respond to you immediately.



King County Budget 2021-2022

OFFICE OF PERFORMANCE, STRATEGY AND BUDGET



Budget at a Glance



\$11.6 BILLION FOR
2019-2020



15,000+ EMPLOYEES

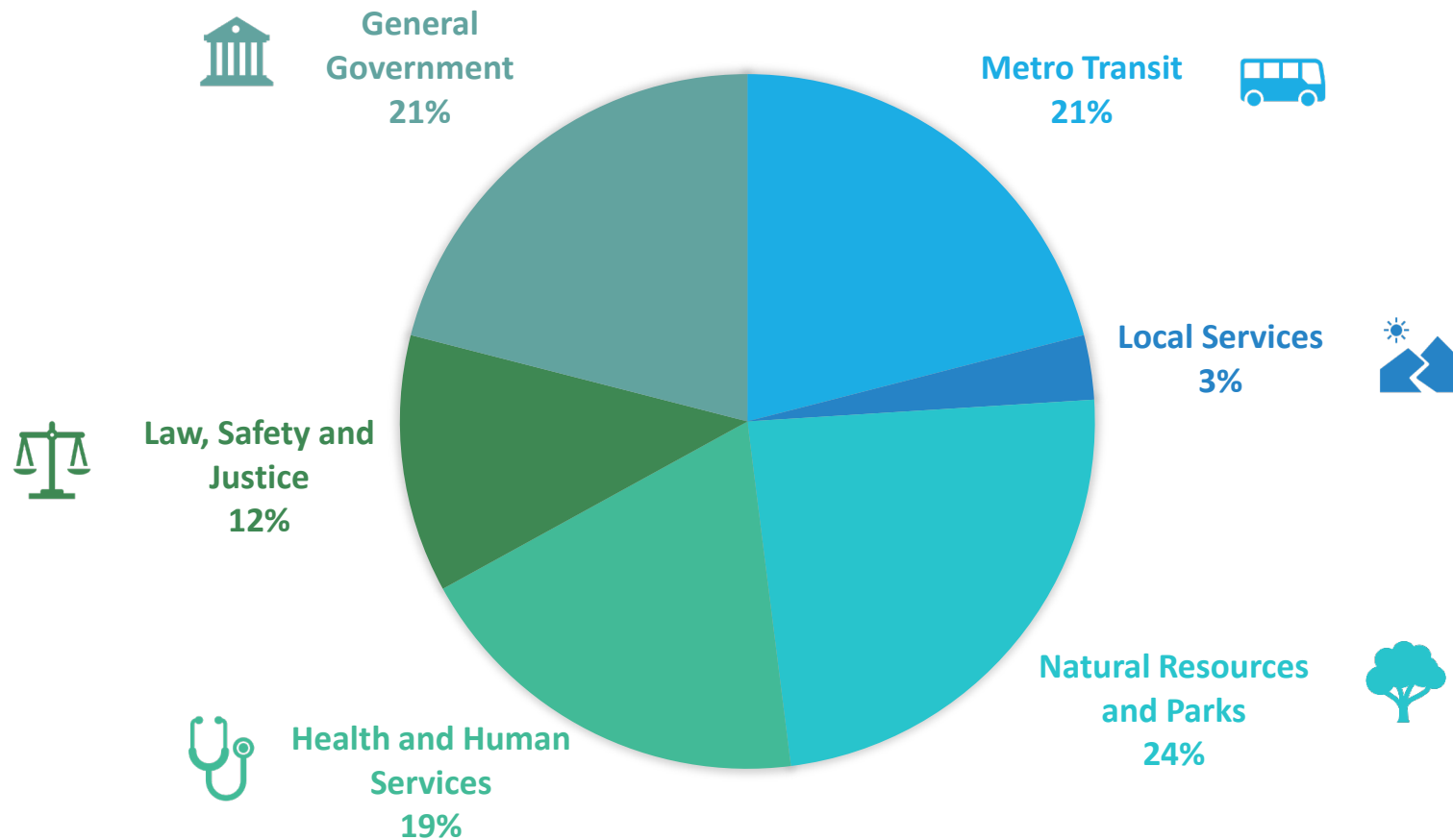


60+ PROGRAMS, BOTH
REGIONAL AND LOCAL



SERVING 2.2 MILLION
RESIDENTS

Where does our funding go?



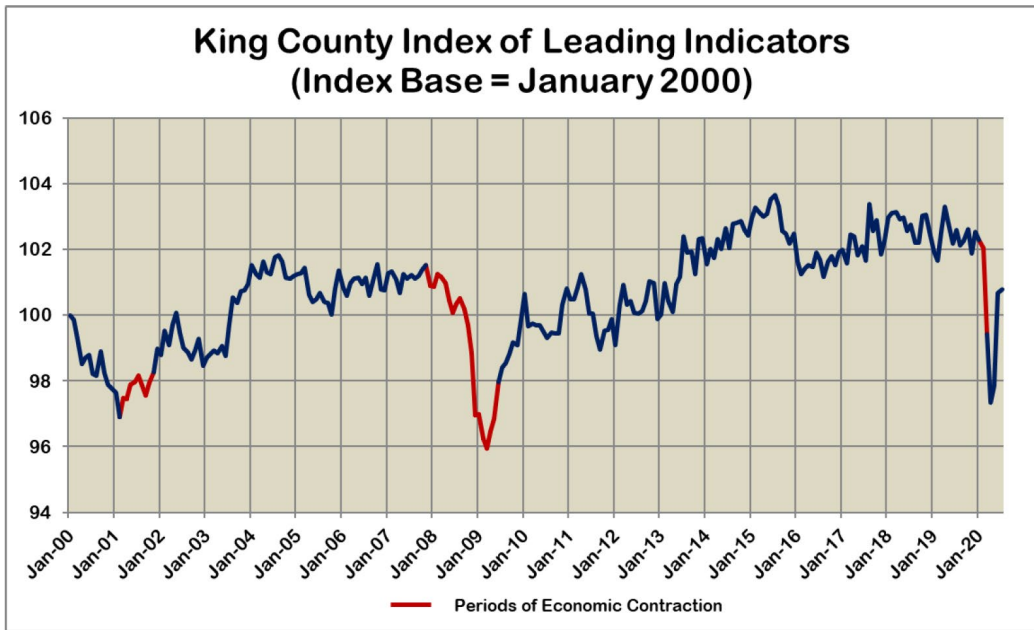
Restrictions on revenue

State law and the King County Charter impose restrictions on the uses of many revenues.

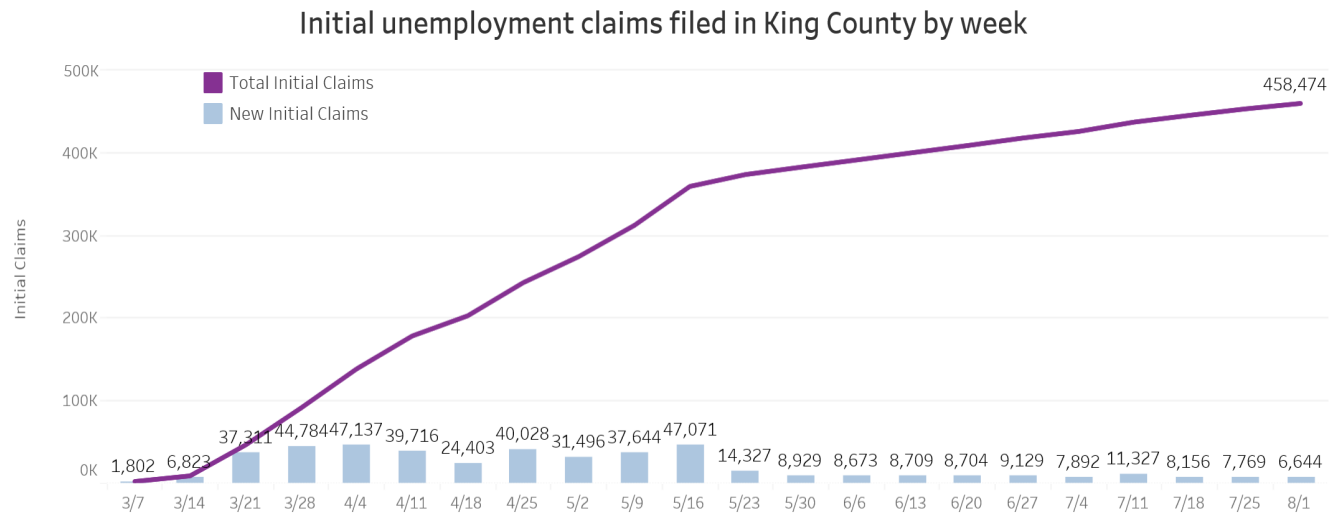
For example, revenues collected from solid waste disposal charges must be used for solid waste programs and cannot be diverted to parks or human services.

King County's finances are organized into about 140 different funds, each with its own revenue sources and expenditures.

The only truly flexible source of funds is the General Fund. General Fund revenues are severely limited by State law. The State and cities have much more revenue flexibility than counties.



Leading Economic Indicators – 2000-2020: Largest single-month change ever in March but some parts of the economy have started to bounce back



King County residents filed 458,474 new unemployment claims from March 1 – August 1;

July countywide unemployment rate was 8.3%;

July statewide unemployment rate was 10.2%

King County's Economic Outlook



August Revenue Forecast

Decline in taxable sales from the March 1 forecast:

2020: -15.8%

2021: -14.8%

2022: -12.4%

Programs that are particularly impacted are those funded by the General Fund, Transit, Mental Illness and Drug Dependency (MIDD), rental car sales tax, and the lodging tax

2021-2022 Budget

2021-2022 budget discussions will be dominated by three issues:

1. COVID-19 response (Public Health, homeless shelter deintensification, transit, etc.)
2. Revenue consequences of the recession caused by COVID-19
3. Anti-racism agenda

COVID-19 Response

- Activities in 2020 are paid for with federal and state funds:
 - Public Health testing, outreach, contact tracing, etc.
 - Homeless shelter deintensification
 - Isolation and quarantine facilities
 - Grants for food assistance, rental assistance, small business support, etc.
- Federal funding ends as of December 30, 2020; Congress is gridlocked on a new bill
- If no federal or state funds are provided, King County's COVID-19 response will be dramatically reduced in January

How does a recession impact demand?



Demand goes down: Transit, Solid Waste, Permitting (with correlated drops in fee-for-service revenue)



Demand goes up: Public Health clinics, Employment Services, Behavioral Health Medicaid services (with some correlated increase in Medicaid revenue for DPH and DCHS)

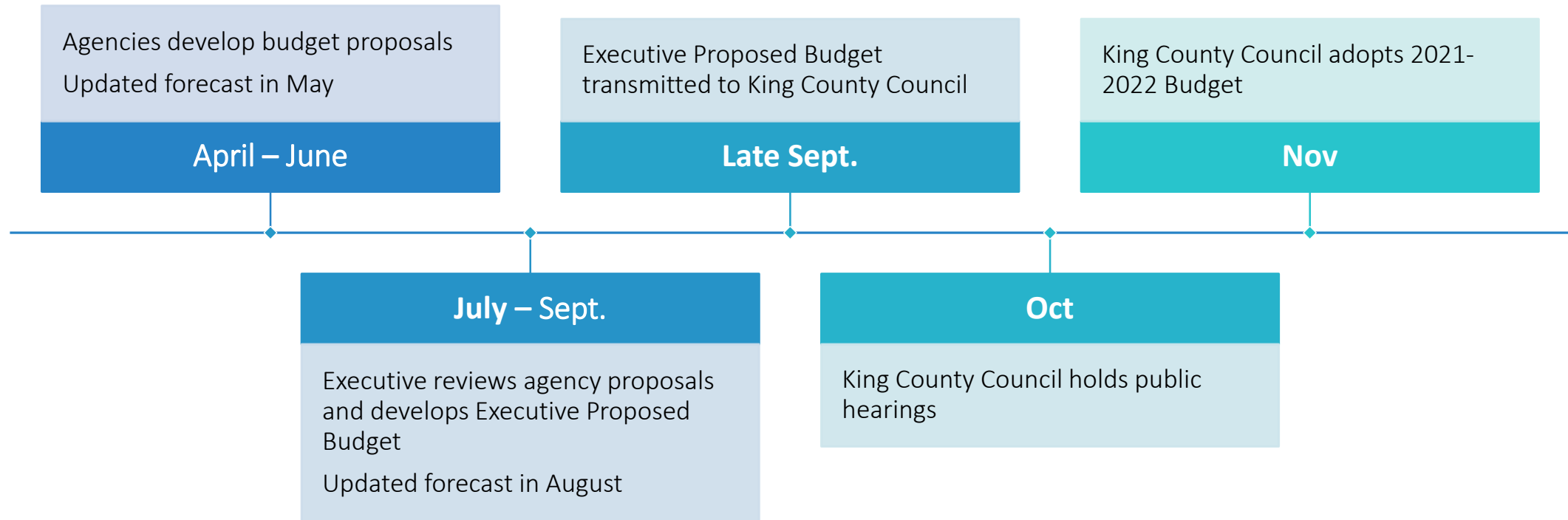


Inequities are exacerbated

Anti-Racism Agenda

- The Executive, Council, and many communities are committed to an anti-racism agenda
- This agenda needs to be reflected in the 2021-2022 Budget; current ideas include:
 - Keeping jail population low post-COVID
 - Continuing to reduce juvenile detention
 - Community engagement in program design and participatory budgeting
 - Expanded community investment (housing, jobs, etc.)
- Goal is to gradually shift funding over several budget cycles

Budget Process



How you can get involved

Agency Proposed

- Community and advisory groups

Council Adopted

- Call your Councilmember
- Attend a community meeting

Community Advisory Groups

Pandemic Community Advisory Board	Children and Youth Advisory Board	Mental Illness and Drug Dependency Advisory Committee	Behavioral Health Advisory Board	Board for Developmental Disabilities	Communities of Opportunity Best Start for Kids Levy Advisory Board	Harborview Medical Center Board of Trustees	Seattle Transitional Grant Area (TGA) HIV Planning Council
Veterans, Seniors and Human Services Levy Advisory Board	Advisory Council on Aging and Disability Services	Regional Human Services Citizen Oversight Board	Veterans Citizen Oversight Board	Veterans' Program Advisory Board	EMS Advisory Committee	HCHN Governing Council	Climate Equity Community Task Force
Healthy King County Coalition	Public Defense Advisory Board	Economic Opportunities & Empowerment Program Advisory Board	Community Advisory Committee on Law Enforcement Oversight	Cultural Development Authority	Citizens Elections Oversight Committee	Civil Rights Commission	Emergency Management Advisory Committee
Rural Forest Commission	Immigrant & Refugee Commission	Women's Advisory Board	Equity Cabinet	King County International Airport Roundtable	Transit Advisory Commission	Solid Waste Advisory Committee	Agriculture Commission

King County-wide Executive Initiative

Vision:

*Protect and restore the water
and land that sustains all of
us within a generation.*



Clean Water
Healthy Habitat

- Abby Hook, Environmental Affairs Officer
- ahook@kingcounty.gov
- <https://www.kingcounty.gov/elected/executive/constantine/initiatives/clean-water-healthy-habitat.aspx>



King County
Local Services

Why are we doing this?

King County will spend over \$9.5B by 2030 on environmental work:

- Wastewater treatment
- Stormwater control
- Land protection and stewardship
- Habitat restoration
- Pollution clean-up

How do we ensure these investments have the best and most equitable outcomes?



30-year Goals: Environmental Success for Communities



**KING
COUNTY
2020
Strategic
Climate
Action Plan**



The Strategic Climate Action Plan (SCAP) is the County's five-year blueprint for climate action, integrating climate change into all areas of County operations and work with King County cities, partners, communities, and residents.



Reducing Greenhouse Gas Emissions

- Make buildings where we live and work greener
- Transition to clean energy sources
- Reduce car trips and increase use of electric vehicles
- Target zero waste of resources, including food
- Plant, Protect and Prepare 3 Million Trees
- Partner with cities toward a net carbon neutral target

GOALS

*Countywide emissions
reductions 50% by 2030;
80% by 2050*

*King County government
operations emissions
reduction 50% by 2025;
80% by 2030*



Elected leaders at a King County – Cities Climate Collaboration (K4C) Elected Official Work Session, October 2019

Sustainable & Resilient Frontline Communities

- Climate justice community-driven policy framework, guided by the Climate Equity Community Task Force
- Focus areas on topics such as affordable housing and green jobs that promote racial equity, recognize the impact of climate change on other social issues, and build an equitable climate future

VISION

Frontline communities are centered in developing climate solutions and have the knowledge, skills, resources, capacity, and social political capital to equitably adapt, lead, and thrive in a changing climate.

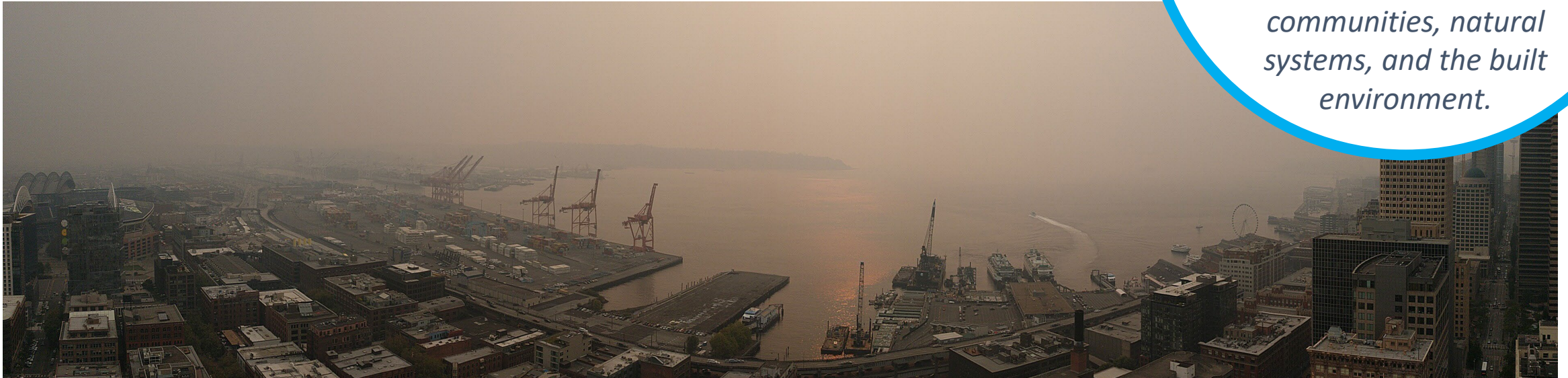


Preparing for Climate Change

- Reduce climate risks for critical impacts such as sea level rise and hotter summer temperatures
- Operationalize climate preparedness and focus on addressing health and equity in actions and plans
- Accelerate regional preparedness

VISION

King County creates, supports, and implements policies and actions that reduce climate change vulnerabilities, equitably and increase the resilience of King County communities, natural systems, and the built environment.



Local Services updates



King County
Local Services

Distributing face coverings and hand sanitizer

- Distributed over 4,000 face coverings to business owners in partnership with the Federal Way Chamber of Commerce
- Look for: October event in East Federal Way to distribute face coverings and hand sanitizer in partnership with the DCHS Health Ambassador Program



COVID-19 Small business assistance

Grant funds

- \$5000 grants to help small business that have been impacted by COVID-19
- There were over 400 applications from unincorporated King County during round one
- We selected 224 businesses to receive awards and are distributing money now
- 136 applications were automatically advanced to be considered for an award in round two that are eligible under the expanded criteria
- Round two is open now unit September 11th



COVID-19 Small business assistance

Technical assistance

- language support, and coaching to help small businesses apply for other funds and services.
- Information about the latest (federal, state, and local) funding and loan resources
- Utility bill assistance
- Filling out grant or funding application forms
- Coaching to help your business survive the impacts of Covid-19 closures
- Other advice and assistance



Up to \$5,000 Community Service Area grants

- Matching funds up to \$5,000 for projects that help residents participate in—and be more connected to—their communities
- Application information available during the week of September 7, 2020
- Selected projects notified through a letter of award
- Lists of 2019 and 2020 selected projects are available online
- Program size: \$90,000 for projects in 2021

Due date: Monday, November 16, 2020 by 5 p.m.



A community needs list...

- Includes service, program, and capital improvement projects
- Supports the community's 20-year vision
- Is developed with community
- Lists county work
- Clearly states whether the county can implement a project (and when) or not
- **Will be used to inform budget development**



How / when do we start?

Q3-Q4 2020: Share information <https://www.publicinput.com/eastfederalway>

- Gather existing community plans and surveys

Q4 2020: Create a starting catalog of requests (now-Dec 2020)

Q1 2021: Engage community

- Define and prioritize requests and their solutions (associated improvement to services, programs, or facilities)
- Evaluate feasibility

Q3-Q4 2021: Finalize needs list



Provide feedback on publicinput.com

- Add to the community needs list for your area
- Make recommendations on things you would like to see in your community
- Find out about King County services and projects in your area
- Learn about upcoming King County events
- See area demographic information

<https://www.publicinput.com/eastfederalway>





Road Services Division

Rick Brater
Division Director

Contact us

24/7 Road Helpline

206-477-8100 | 800-527-6237

maint.roads@kingcounty.gov



King County
Local Services

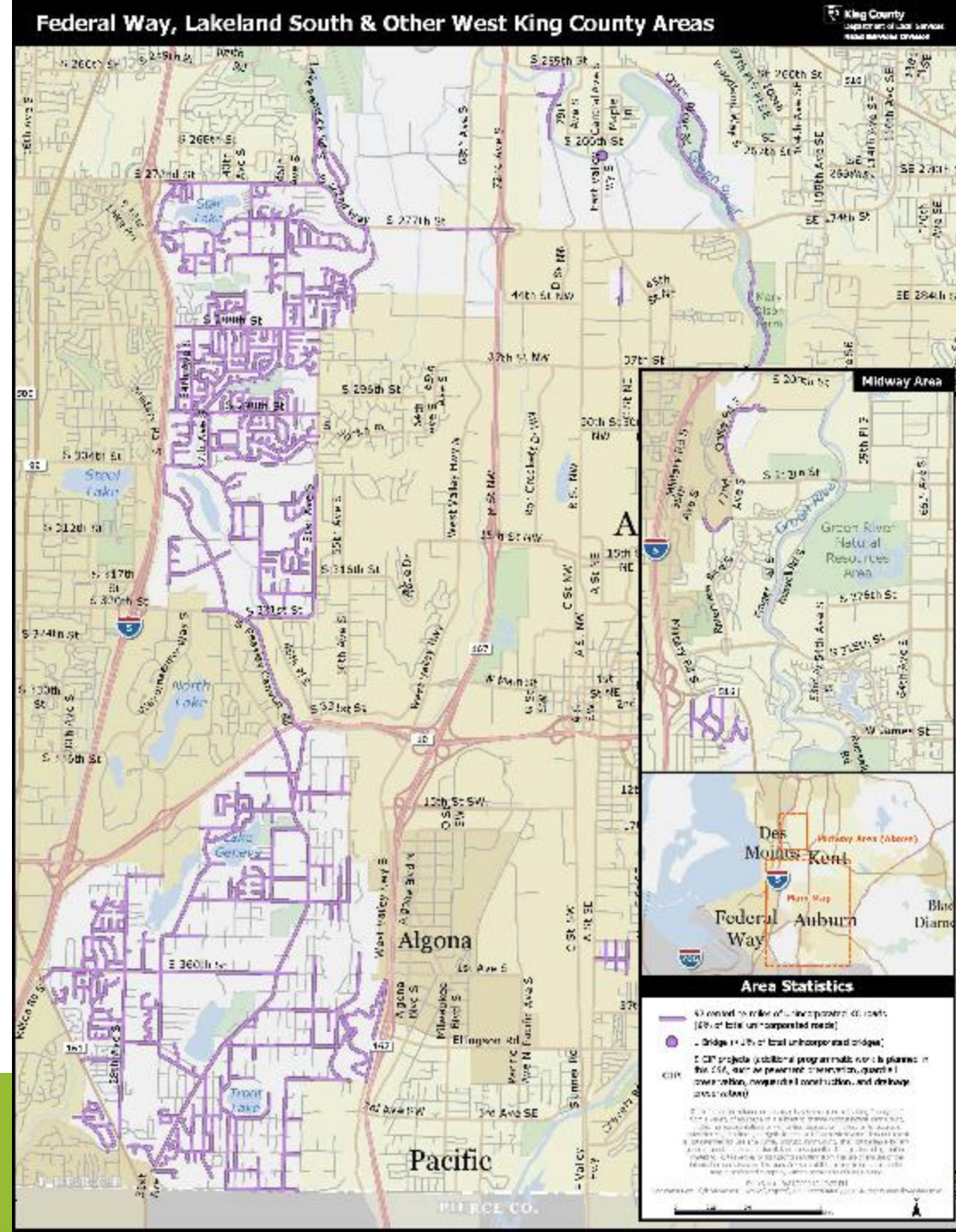
Road Services Division



King County
Local Services

- Federal Way
- Lakeland South
- Other West King County areas

- Federal Way
- Lakeland South
- Other West King County areas



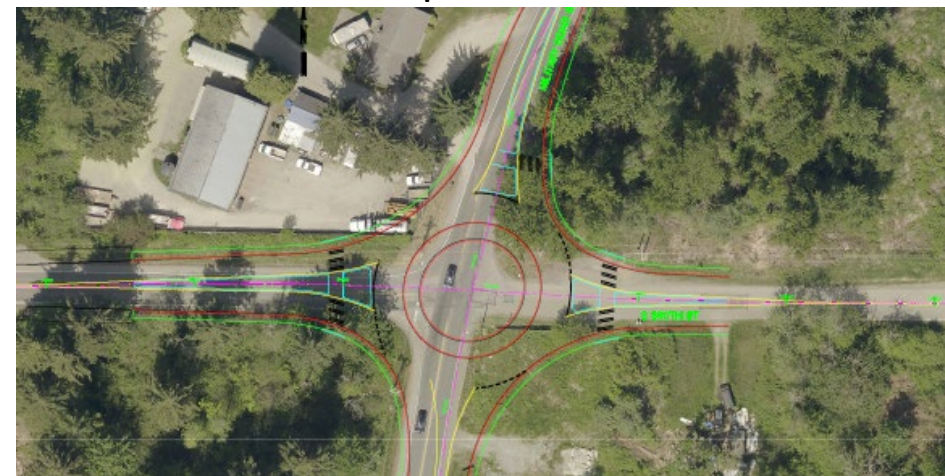
Traffic Control and Safety projects

East Federal Way / Lakeland South

- S 360th Street and 32nd Avenue S Sightline Improvement (construction estimated for 2021)
- S 360th Street and Military Road Intersection Improvement (construction estimated for 2022)



Before: 360th Street and Military Road Intersection Improvement site



Design Plans: 360th Street and Military Road Intersection Improvement



School safety projects

East Federal Way / Lakeland South

- S 298th Street School Pathway (construction estimated for September 2020)
- 42nd Avenue S School Pathway (construction estimated for September 2020)



Before: 42nd Avenue South School Pathway Project site

Drainage Projects

East Federal Way / Lakeland South

- 55th Avenue S Culvert Replacement (construction completed in 2019)
- Green River Road Culvert Replacement (construction complete August 2020)
- S 370th Street Culvert Replacement (construction estimated for 2021 or later)
- 3 drainage preservation projects (construction completed in spring 2020)
 - S 364th and 53rd Avenue Drainage Preservation
 - S 352nd Street at 44th Avenue S Drainage Preservation
 - Military Road S Drainage Preservation



Before: 55th Avenue S Culvert Replacement Project



After: 55th Avenue S Culvert Replacement Project



Maintenance and Operations activities

East Federal Way / Lakeland South

- Maintenance activities respond to critical safety issues, and customer service requests (ongoing, year-round)
- Typical maintenance and operations activities for this area include:
 - pothole patching
 - vegetation management
 - traffic sign repair/replacement
 - maintaining road shoulders
 - repairing guardrail
 - clearing blocked drainage assets
 - removing debris



Maintaining shoulders on Military Road



Winter weather response on S 288th Street



Removal of storm debris on Military Road S and 31st Avenue S



Do you have road issues to report?

24/7 Roads Helpline at: 206-477-8100 or toll-free at 800-527-6237

For non urgent issues, please continue to email maint.roads@kingcounty.gov

Other ways to connect with King County Roads:

- <https://www.kingcounty.gov/depts/local-services/roads.aspx>
- Twitter: @kcroads
- Facebook: kingcountylocalservices
- Instagram: @kingcountylocalservices
- My Commute –Commuting resources – road closures, restrictions, and traffic cameras.
www.kingcounty.gov/mycommute | webteam.roads@kingcounty.gov
- Road Alert – Email subscriptions available. www.kingcounty.gov/roadalert | webteam.roads@kingcounty.gov

Para solicitar esta información en Español, sírvase llamar al 206-263-1189 (Relevo:711)

To request this document in another format or language, please call 206-263-1189 (Relay 711)



King County Permits

Director Jim Chan

206-296-6600

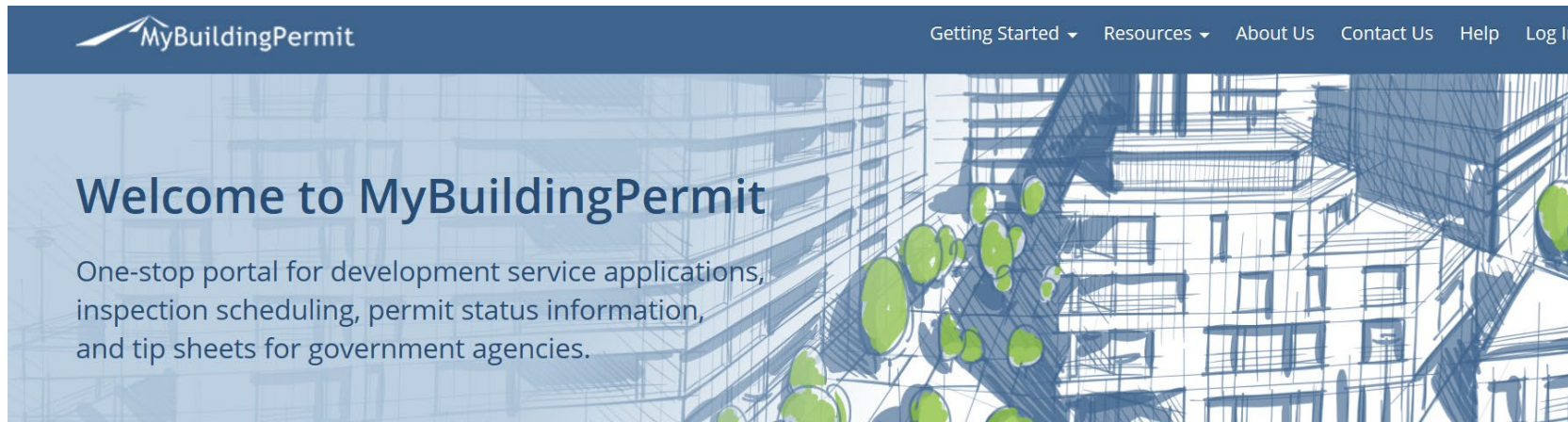
www.kingcounty.gov/permits



King County
Local Services

What's new in Permitting?

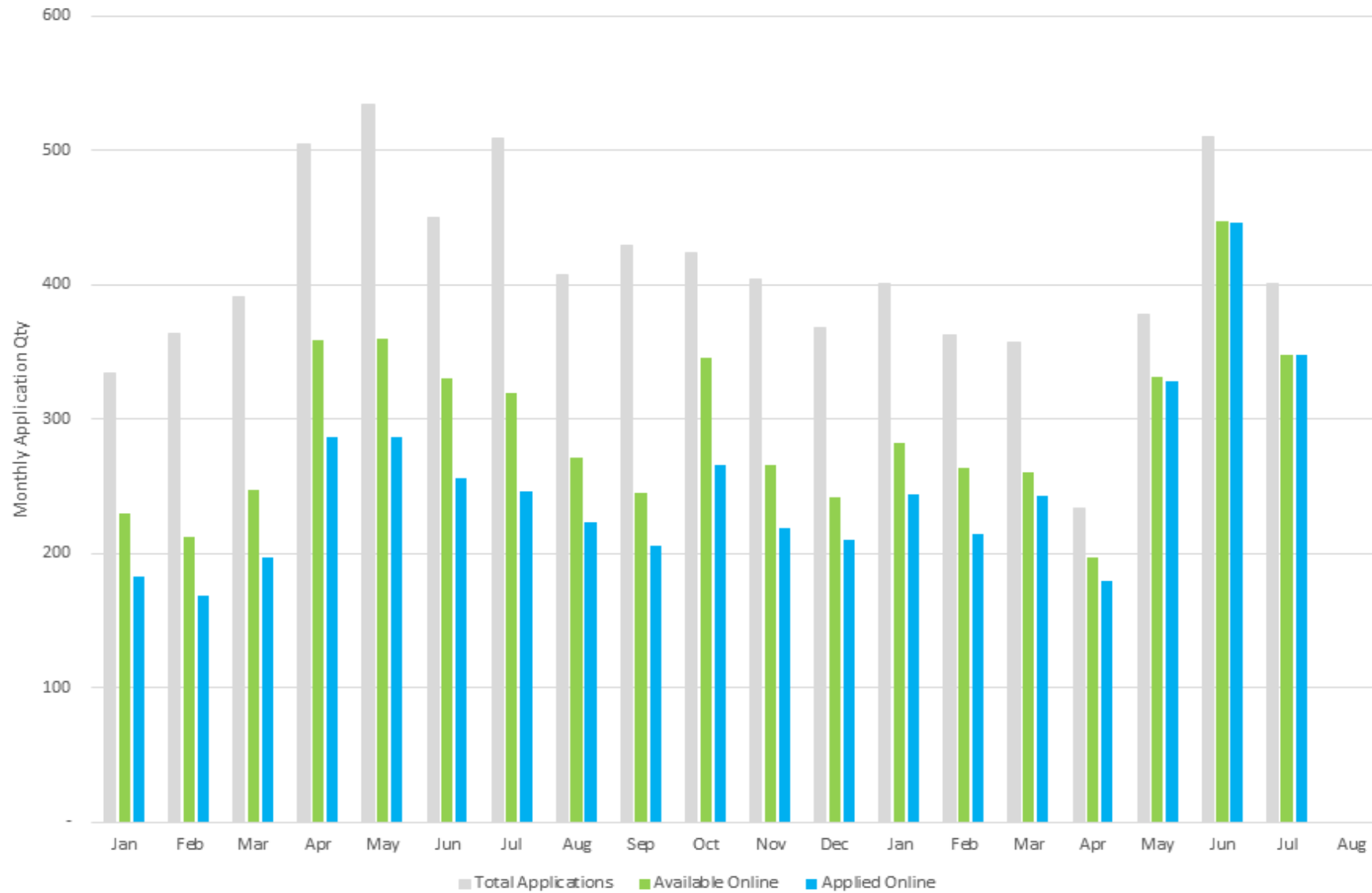
- 90% of our of permits are available online through **MyBuildingPermit.com**



- The remaining 10% of permits can be submitted online by emailing: permitcenter.DPER@kingcounty.gov



Implementation and Use of Online Permit Application: 2019-2020



Online permits – MyBuildingPermit.com

- Adult Family Home Inspections
- Boundary Line Adjustments
- Code Interpretations
- Critical Areas Designation
- Damage Inspection Report
- Fire & Fuel Tank Permits, all types
- Legal Lot Determination
- Mechanical Permits
- Residential Permits, all types
- Shoreline Exemption
- Signs
- Special Events
- Zoning and Historical Certification





Office of Emergency Management

Department of Executive Services

Michelle Chatterton, *Public
Information Officer*

Michelle.Chatterton@kingcounty.gov



King County
Local Services

Personal preparedness: Who depends on you?

Know your hazard!

- What are you at risk for? www.hazardready.org
- Note: they may be different depending where you spend your time

Preparedness is key (and easy!)

- Have a kit!
 - Minimum: Food, water, shelter
 - Think about work, transportation, home
 - Customize! Think about pets, medications, baby items, communications, comfort items, medical equipment!
 - To do! Watch [Kit on Shoestring Budget](#) (YouTube video)
- Create a plan!
 - Consider how to communicate with loved ones
 - Who will support your family? Who can you support?

Did you know??

- You should have 1 gallon of water per person!
- The food in your kit should have a long shelf life and match your dietary needs
- You should carry a few small cash bills with you.



Flood and winter weather season

Prepare early for flood season

- Learn the safest route to higher ground
- Make housing arrangements, in case you need to evacuate
- Plan for a meeting place outside of the flood hazard area
- Include your entire household in planning, and teach them skills like turning off utilities

If a flood occurs

- Monitor news and emergency notifications for instructions
- Evacuate immediately when told by first responders

Be ready for winter weather

- Have extra fuel and emergency supplies incase of utility outages
- Winterize your home and car
- Keep winter weather supplies in your vehicle, like extra blankets, warm clothing, water, and food



Above Photo Credit: Ellen M. Banner, The Seattle Times
Below Photo Credit: Steve Ringman, The Seattle Times via AP



Be informed and stay safe with ALERT King County

Why sign up for emergency alerts?

- Allows for timely messages about:
 - Emergency situations
 - Threats to public safety and health
 - Significant impacts to major infrastructure ⁶⁰³⁴⁵⁰⁹¹²
- Allows for targeted messaging to your specific area
- Allows for important information that can empower timely, smart decisions

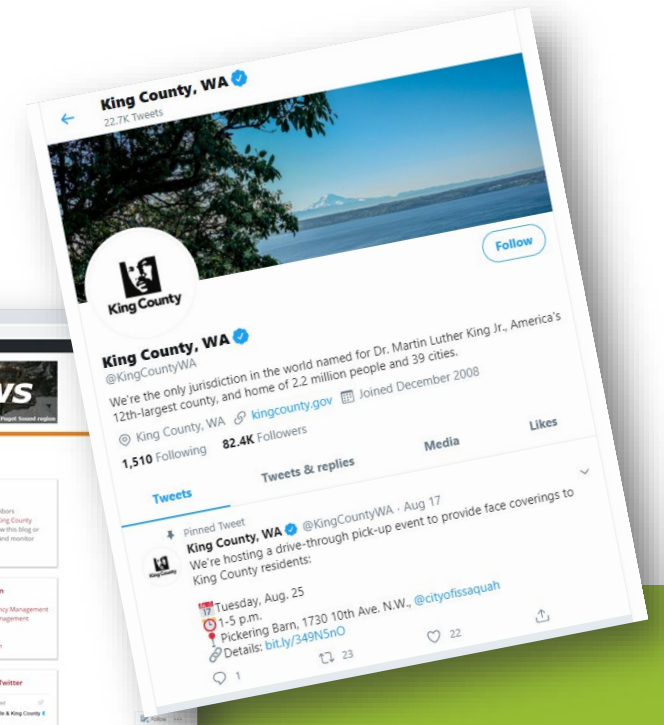
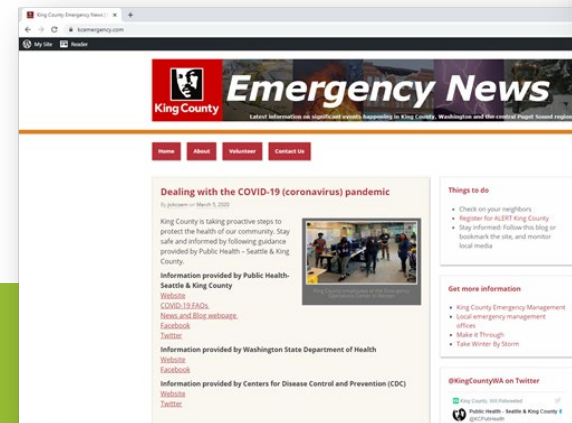
It's easy! Visit www.kingcounty.gov/alert for more information.



Need more information?

- Get up-to-date information during an emergency
www.kcemergency.com
- Explore King County specific information
www.kingcounty.gov/prepare
- Learn about your hazards
www.hazardready.org
- Sign-up for emergency alerts through ALERT King County
www.kingcounty.gov/alert
- Want winter weather preparedness information?
Visit www.takewinterbystorm.org
- Need information on how to get prepared?
www.makeitthrough.org

- Facebook
 - www.facebook.com/KingCountyWA
 - www.facebook.com/makeitthrough
 - www.facebook.com/TakeWinterbyStorm
- Twitter
 - @KingCountyWA
 - @WinterbyStorm
- Instagram (It's NEW!)
 - @kingcountyOEM



King County
Local Services

Public Health-Seattle & King County Community Health Services

*CHS strengthens King County's safety net services and
partnerships to deliver equitable and responsive health care
for marginalized communities.*

Daphne Pie

Health Services Administrator II

Public Health-Seattle & King County

(206) 263-8369

daphne.pie@kingcounty.gov



King County
Local Services

Public Health-Seattle & King County Community Health Services

CHS strengthens King County's safety net services and partnerships to deliver equitable and responsive health care for marginalized communities

- **Primary Care** - Adults & Pediatrics – *Eastgate, Downtown, Navos*
- **Family Planning** – Low-barrier access to high quality birth control, pregnancy testing with options counseling and referrals, sexually transmitted infection services, breast and cervical cancer screenings. Services are delivered at four PHC's (*Eastgate, Federal Way, Kent, & Auburn*)
- **Dental** – Delivers preventive and restorative dental services to a variety of clients, including a homeless focus at the Downtown PHC. Services are offered at five PHC's (*Renton, Downtown, North, Eastgate, and Columbia*) and through the Mobile Dental Van.



Public Health-Seattle & King County Community Health Services

CHS strengthens King County's safety net services and partnerships to deliver equitable and responsive health care for marginalized communities

- **Women Infants & Children (WIC) Supplemental Nutrition Program** - Provides access to nutritious foods, nutrition education, referrals, and breastfeeding support for low-income pregnant, breastfeeding, and non-breastfeeding postpartum women, and infants and children up to age five. *(County-wide)*
- **Parent Child Health (PCH)** - Provides support for healthy pregnancies and babies through education and counseling. Two of PCH's primary services are Maternity Support Services (MSS) and Infant Case Management (ICM). *(County-wide)*
- **Nurse Family Partnership (NFP)** – Partners clients with a nurse from pregnancy to age 2 to support first time parents and give babies the best possible start in life. *(County-wide)*
- **Family Ways (coming soon)** - Serves pregnant and parenting families from communities facing the greatest health disparities. *(County-wide)*



Access & Outreach Program

Purpose: Ensure that King County residents have access to essential services public benefits and remove barriers that prevent individuals to access benefits. We can help residents apply for the following programs:

- Health Insurance (Apple Health, Medicaid, Qualified Health Plans, Take Charge Family Planning)
- Food Assistance & Utility-Energy Assistance Programs
- ORCA Lift (Discounted fare on Metro Transit, ST Link light Rail, ST buses, Sounder Train, Water Taxis & more)
- Access to Medical & Dental Providers & ABCD (Access Baby Children Dentistry)
- Breast Cervical Colon Health Program & Help residents find a medical and dental provider

For assistance please contact us: Community Health Access Program (1-800-756-5437). Individuals can apply by phone for all the above programs.

www.kingcounty.gov/health/outreach Email: **Chap@kingcounty.gov**



King County Solid Waste Division



Glynda Steiner, Deputy Division Director

GSteiner@Kingcounty.gov

206-477-4555



Dorian Waller, Government Relations
Administrator

DWaller@Kingcounty.gov

206-263-1368



King County

Local Services

Hot topics for East-Federal Way

- South County Recycling and Transfer Station
- Litter and Illegal Dumping
- Recycling Collection events
- Household hazardous waste collection



Current projects or programs (East-Federal Way)

South County Recycling and Transfer Station

- Scheduled Completion early 2024



Current projects or programs (East-Federal Way)

Litter/illegal dumping programs and assistance

- **Community Litter Cleanup** - Coordinates cleanup of illegal dumpsites and litter on public property.
- **Illegal Dumping Hotline** – Hotline to report illegal dumping and route complaints.
- **Junk Vehicle** – Abandoned vehicle removal from private property.
- **Community Cleanup Assistance Program** – Financial assistance (waived tip fees) to private property owners who are either low income or whose property has been dumped on.
- **Contact:** 206-296-SITE (7483)
 - www.kingcounty.gov/report-dumping
 - www.kingcounty.gov/junk-vehicles



Current projects or programs (East-Federal Way)

Recycling & Household Hazardous Waste Collection

- King County funding provided to cities and unincorporated areas to offer events for residents and businesses to recycle select materials.
- **Sept. 26:** The Auburn Fall Residential Recycling Event, at Ilalko Elementary School from 9 a.m. – 5 p.m.
- Auburn Wastemobile at The Outlet Collection on **Saturdays and Sundays** from 10 a.m. – 5 p.m. Free hazardous waste collection from households and qualifying businesses
- Visit www.hazwastehelp.org for updated Haz Waste Collection sites



Accessing Water and Land Resource Services



Josh Baldi, Division Director
Water and Land Resources Division
206-477-4800
wlr@kingcounty.gov



Hot Topics & Key Issues

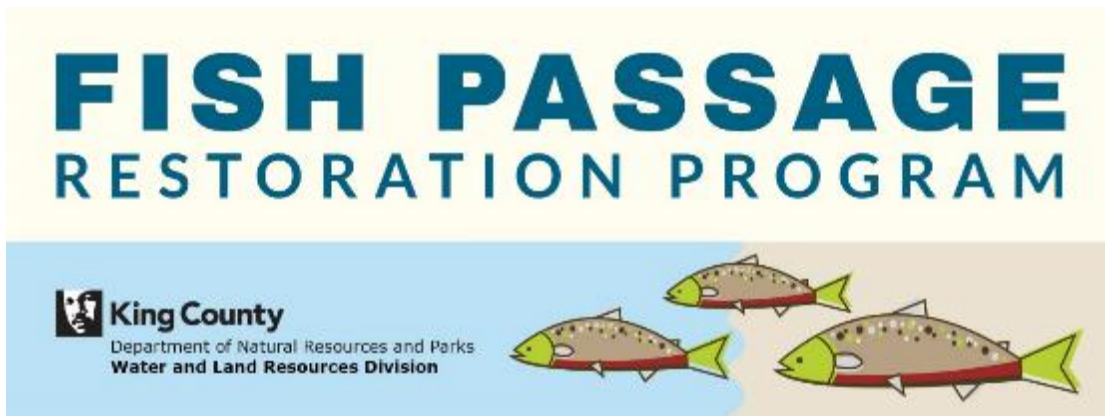
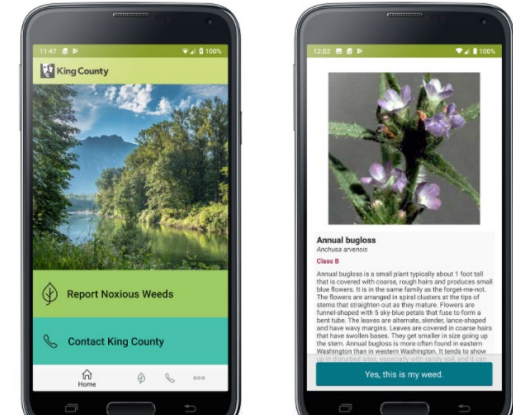
- Shellfish Protection District for Poverty Bay to protect water quality and public safety.
- COVID 19 response to support farmers and the agriculture economy:
 - ✓ CARES Act funding for farmers and farmers markets.
 - ✓ New “Food Finder” tool to connect customers to local farms.
 - ✓ Small grants for farmers.

www.farmkingcounty.org



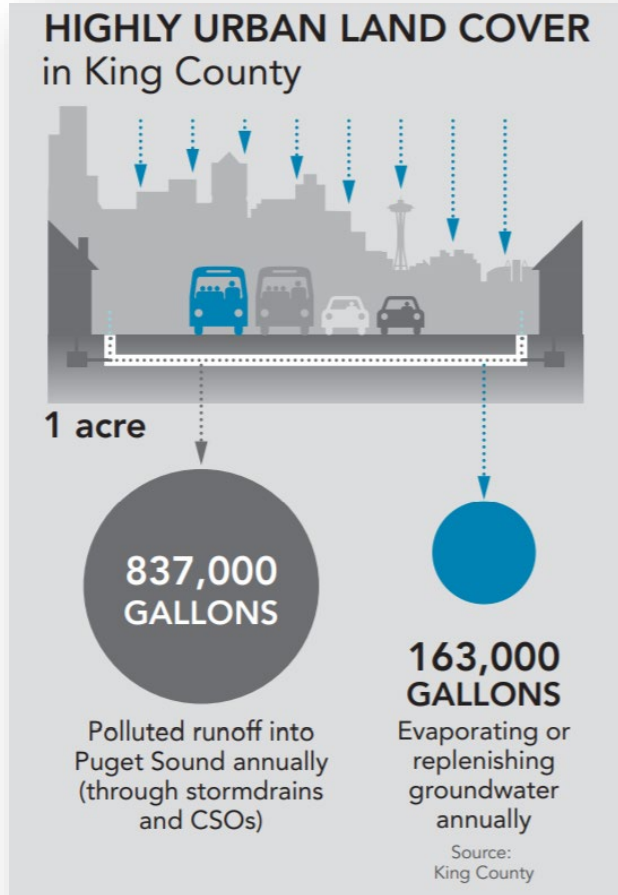
Current programs

We control noxious weeds, such as *goatsrue*, to prevent and reduce their harmful economic, environmental and social impacts. You can help protect your community by reporting noxious weeds online or through the **King County Connect App**. Free assistance is available.



King County has surveyed 1,952 sites, **67 in East Federal Way**, to identify where barriers can be removed to help threatened fish species access spawning habitat and ensure their survival.

Current programs



Managing stormwater is critical to protecting the water quality of the streams and lakes in your community, and Puget Sound. We offer services from pollution prevention resources and assistance, to drainage and water quality problem response and inspections.

Flood preparedness is critical because flooding is the leading natural disaster in King County. If you live or work in – or travel through – a floodplain, get prepared and stay prepared. **Sign up for free flood alerts.**



King County
Local Services

www.kingcounty.gov/wlr

Upcoming projects and programs

- Working with the community to protect the water quality of Poverty Bay and impacts to public health.
- Implementing the 2020 King County Strategic Climate Action Plan, following King County Council review and public input.



KING
COUNTY
2020
**Strategic
Climate
Action Plan**



King County
Local Services

www.kingcounty.gov/wlr

Parks and Recreation Division

DNRP

Warren Jimenez

Director, Parks and Recreation Division, DNRP

Contact: wjimenez@kingcounty.gov



Doug Hodson

Deputy Director, Parks & Recreation Division, DNRP

Contact: doug.hodson@kingcounty.gov



King County
Local Services

DNRP Parks Hot Topics Key Issues

- COVID Response
- [Recreate Responsibly](#)

Mask up!

Please be prepared to cover your nose and mouth:

- When you are **within 6 feet** of anyone not in your group
- When you are in a **busy area**
- When you **go indoors**



#RecreateResponsibly

www.recreateresponsibly.org



King County
Local Services

Current projects or programs

Weyerhaeuser King County Aquatic Center (WKCAC)

- Skylight replacement
- Fire panel replacement

5-Mile Lake Park Restroom Replacement



Projects/programs planned in 2021/2022

- WKCAC Major Maintenance
- South County Ballfields Improvements
- Open Space Acquisition
- Parks Levy Grant Programs



CSA Activities

Online services

- Volunteer Event Registration Portal:
<https://pg-cloud.com/KingCountyParks/>

Changes to Services


- WKCAC closed for construction

Coalition Groups

- Leafline Trails Coalition
- Play Equity Coalition

HOME HUB FORMS DATA

King County Parks Volunteer Program



VOLUNTEER INFO

OUR PARTNERS

LEARN MORE

OUR STAFF

Filter by Event Site: All Event Sites

Marymoor Park - Birdloop, Eastside Audubon Event
Saturday September 5 2020: 9:00am to 12:00pm
Number of Volunteer Positions: FULL
Location: Marymoor Park - Birdloop

LEARN MORE

Renton Park Volunteer Event
Saturday September 12 2020: 9:00am to 12:00pm
Number of Volunteer Positions: FULL
Location: Renton Park

LEARN MORE



Questions & Comments



Closing Remarks

Councilmember

Pete von Reichbauer

District 7

Pete.vonReichbauer@kingcounty.gov

Facebook:

www.facebook.com/pete.vonreichbauer



King County
Local Services

Survey

- Did you find this meeting valuable?
- Have you been to a Local Services Town Hall before?
- Were your questions answered?



Thank you for joining us tonight!

Email: ASKLocalServices@kingcounty.gov

<https://kingcounty.gov/local-services>



King County
Local Services