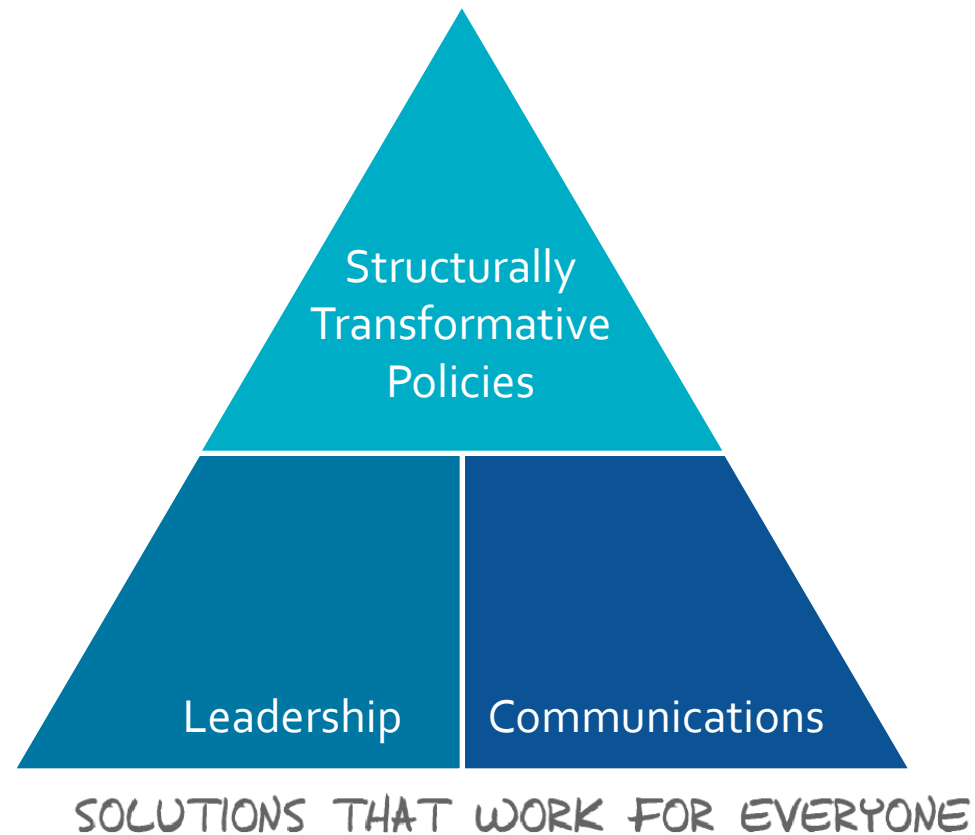

Building Prosperity for Everyone: Equity in a Changing America

King County, WA
November 13, 2012

The Center for Social Inclusion

- Ideas
- Leadership
- Communications



Structural Inclusion



King County serves all residents by promoting fairness and opportunity and eliminating inequities.

King County Strategic Plan—Fair And Just Guiding Principle



- Affordable, safe, quality housing
- Access to parks and natural resources
- Equity in county practices
- Access to affordable, healthy, local food
- Equitable law and justice system
- Community and public safety
- Access to safe and efficient transportation
- Quality education
- Family wage jobs and job training
- Strong, vibrant neighborhoods
- Access to health and human services
- Healthy built and natural environments
- Early childhood development
- Economic development

DETERMINANTS OF EQUITY

The conditions in which people live, work and play are determinants of equity. Equal opportunity in these areas is necessary



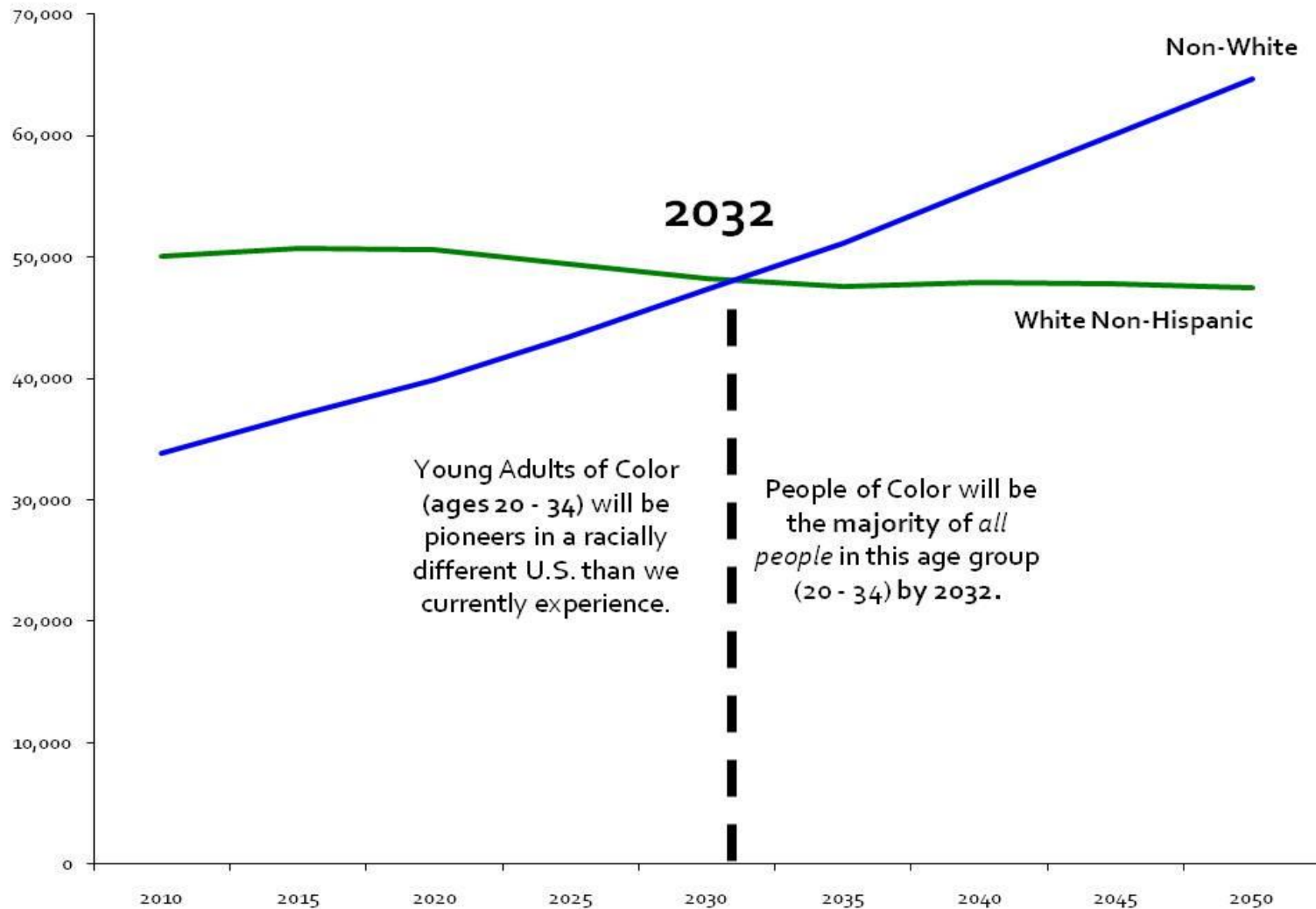
CENTER FOR SOCIAL INCLUSION

Equity: A growth model

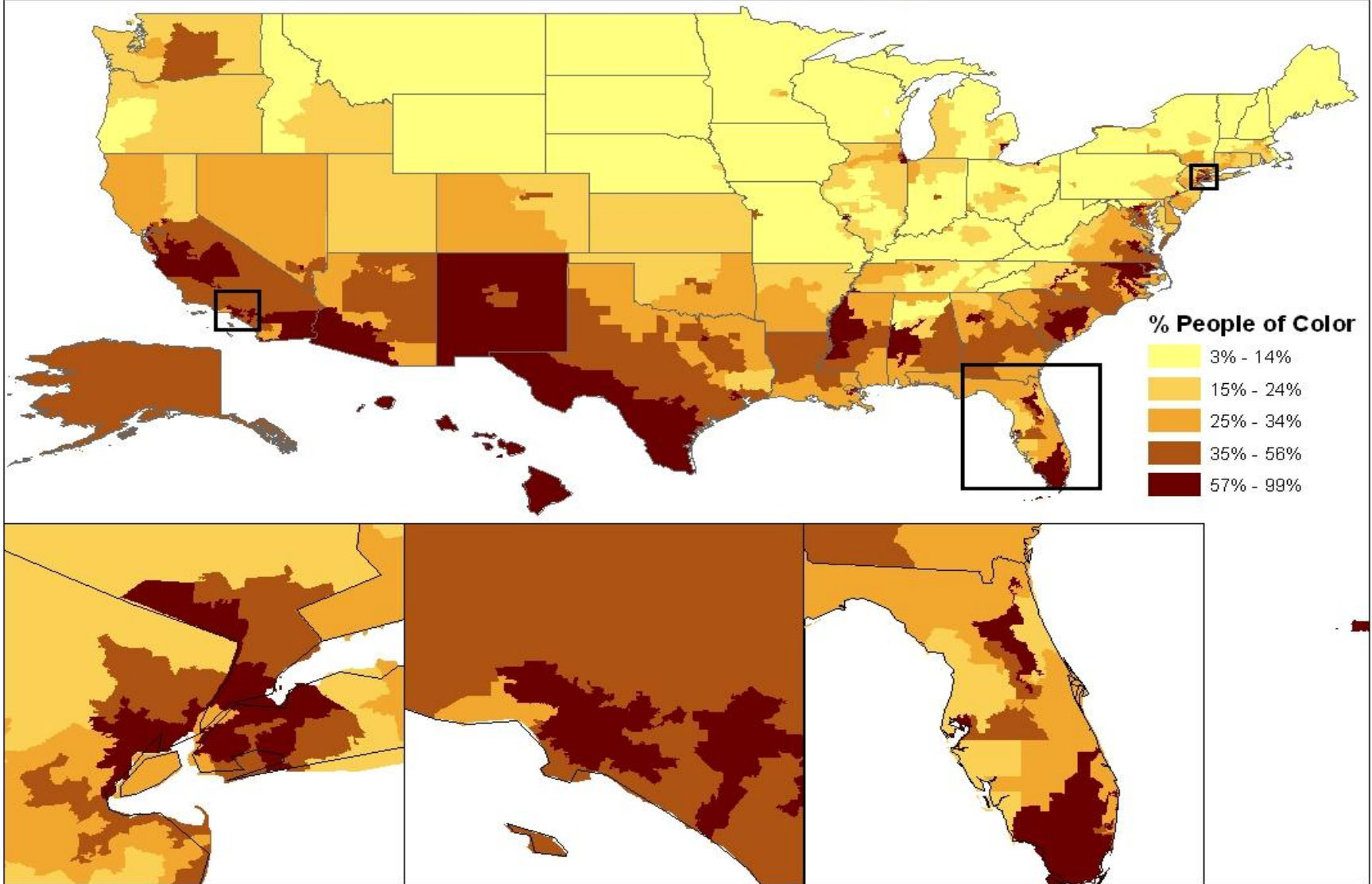
- Growth in 74 US regions in '80s included reducing poverty. *Manuel Pastor and others, Regions That Work: How Cities and Suburbs Can Grow Together (Minneapolis: University of Minnesota Press, 2000).*
- '94-'04 growth in 118 regions (size of NE OH) included racial inclusion and income equality, positively correlated with employment, output, productivity, and per capita income. *Randall Eberts, George Erickcek, and Jack Kleinhenz, "Dashboard Indicators for the Northeast Ohio Economy: Prepared for the Fund for Our Economic Future." Working Paper 06-05 (Federal Reserve Bank of Cleveland, 2006), available at <http://www.clevelandfed.org/Research/workpaper/2006/wp06-05.pdf>.*
- The regions with stronger economies in CA have good immigrant integration. And immigrants contribute to more rapid GDP growth in a metro region. *http://www.huffingtonpost.com/manuel-pastor/california-immigration_b_1891791.html*



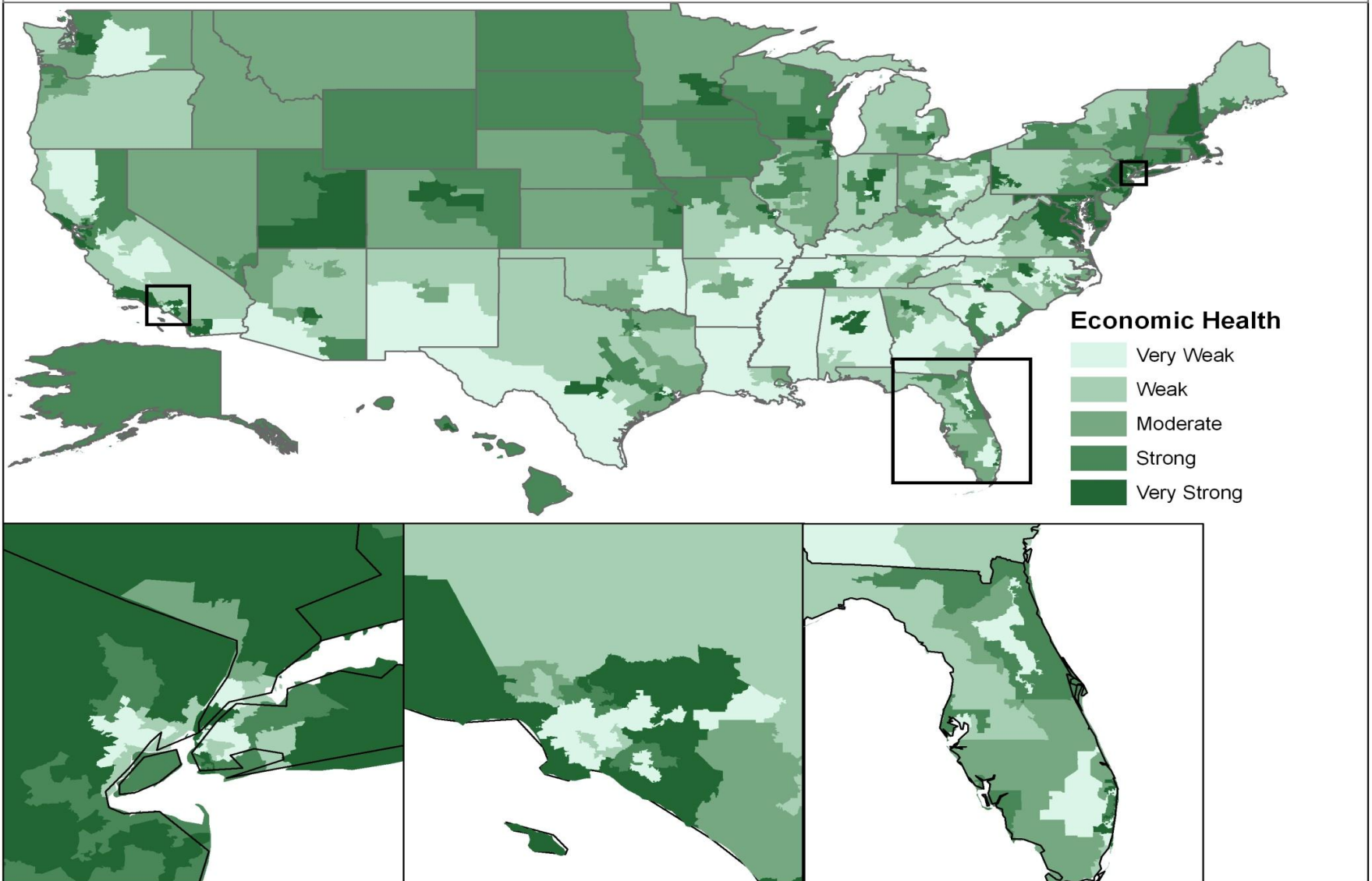
The country is turning brown



Congressional Districts - % People of Color



Congressional Districts - Economic Health Index

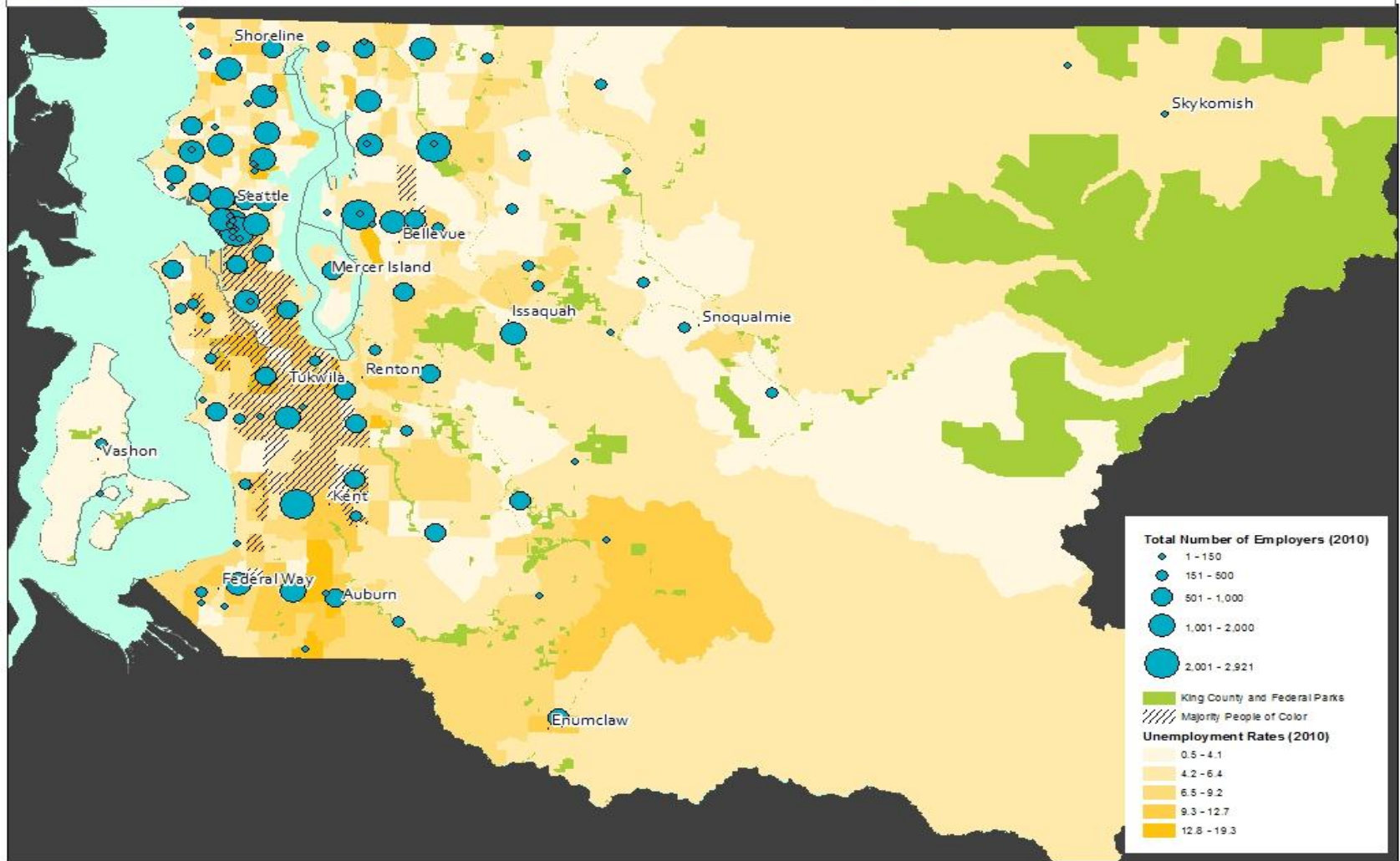


Employers are Located near Whiter Communities with Low Unemployment

Number of Employers (zipcode), People of Color and Unemployment Rates (census tract)

Source: U.S. Census Bureau

Csi CENTER FOR SOCIAL INCLUSION



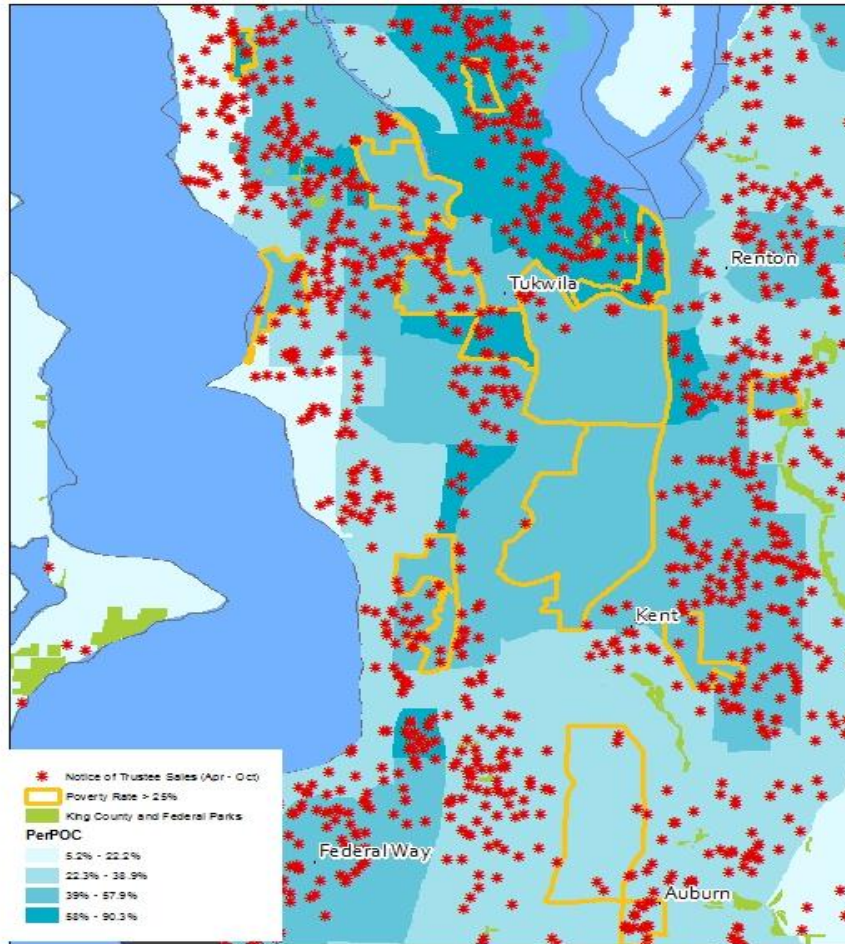
Notice of Trustee Sales hit Communities of Color the Hardest

Notice of Trustee Sales (Apr 2012 - Oct 2012), Communities of Color and Population in Poverty

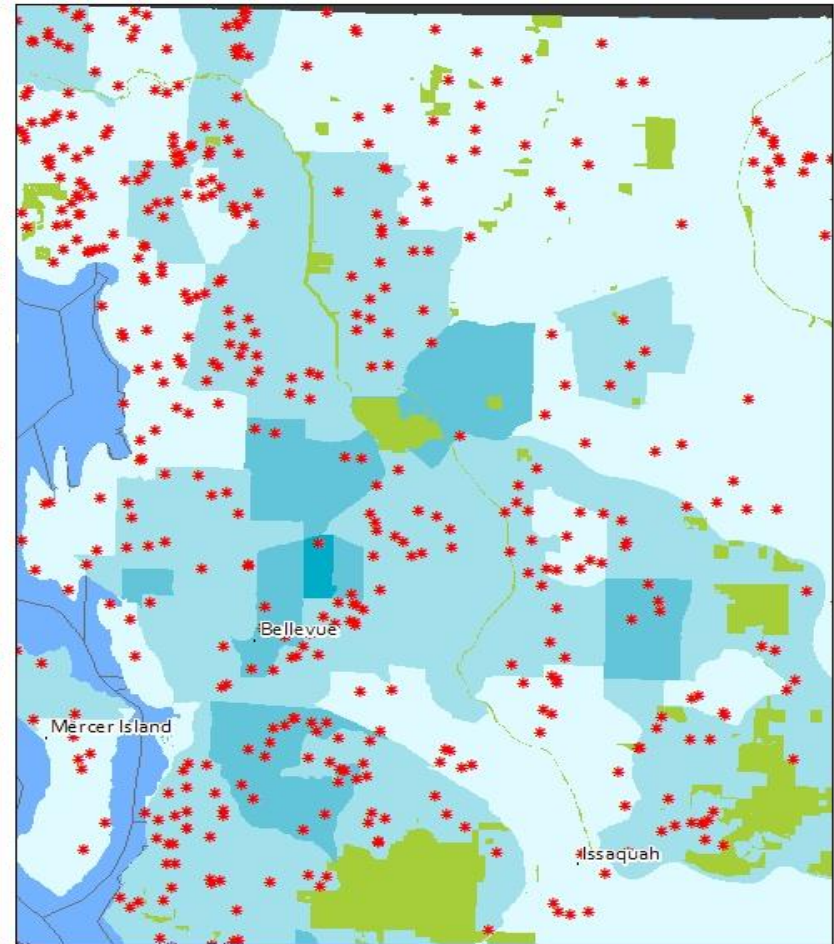
Source: U.S. Census Bureau, King County

Csi CENTER FOR SOCIAL INCLUSION

Tukwila, Renton, Kent, Federal Way



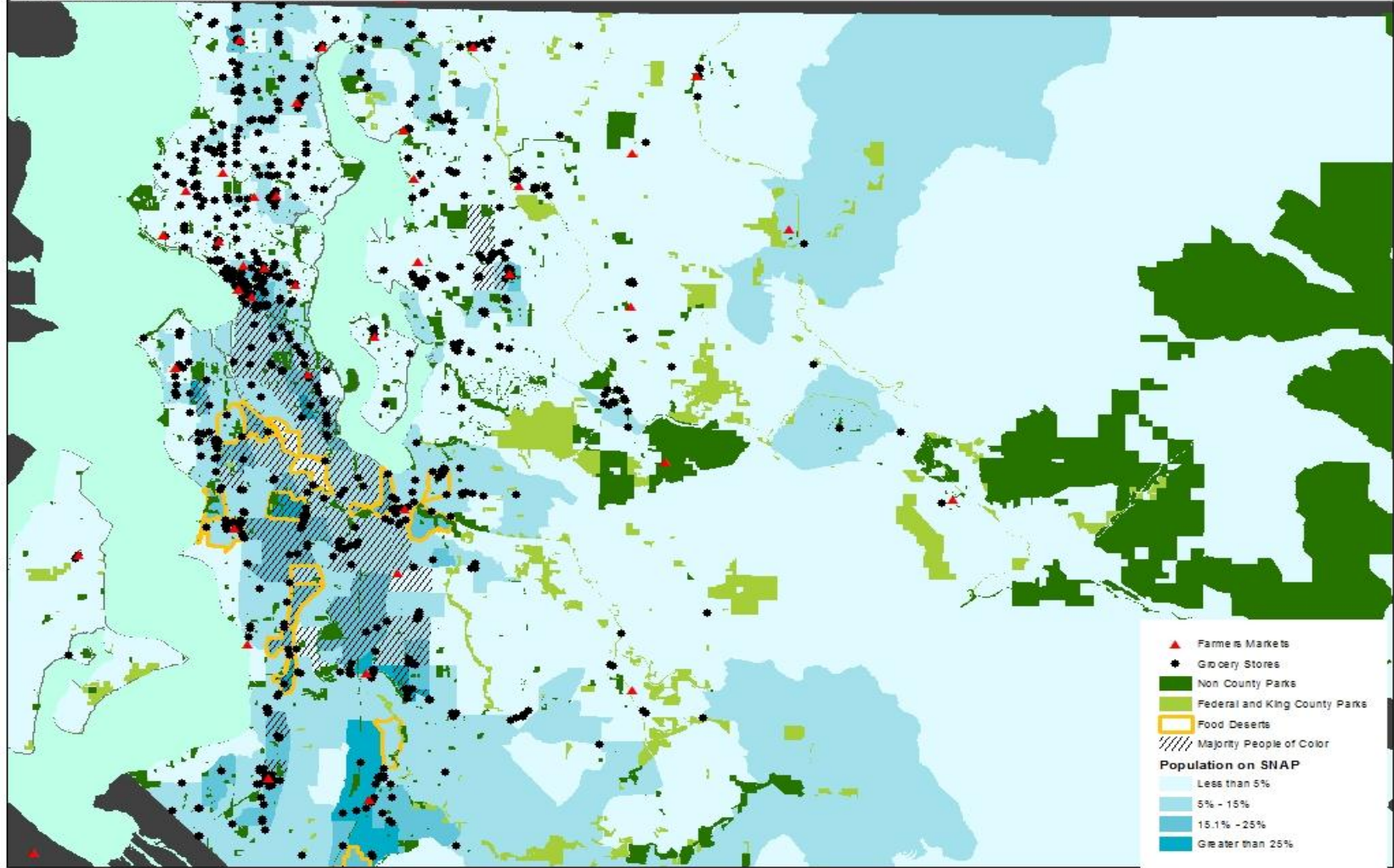
Bellevue, Issaquah, Mercer Island



Challenge: SNAP Recipients are Located Further from Grocery Stores

People of Color, SNAP Benefits
Food Access, and Farmers Markets
Source: U.S. Census, USDA, King County

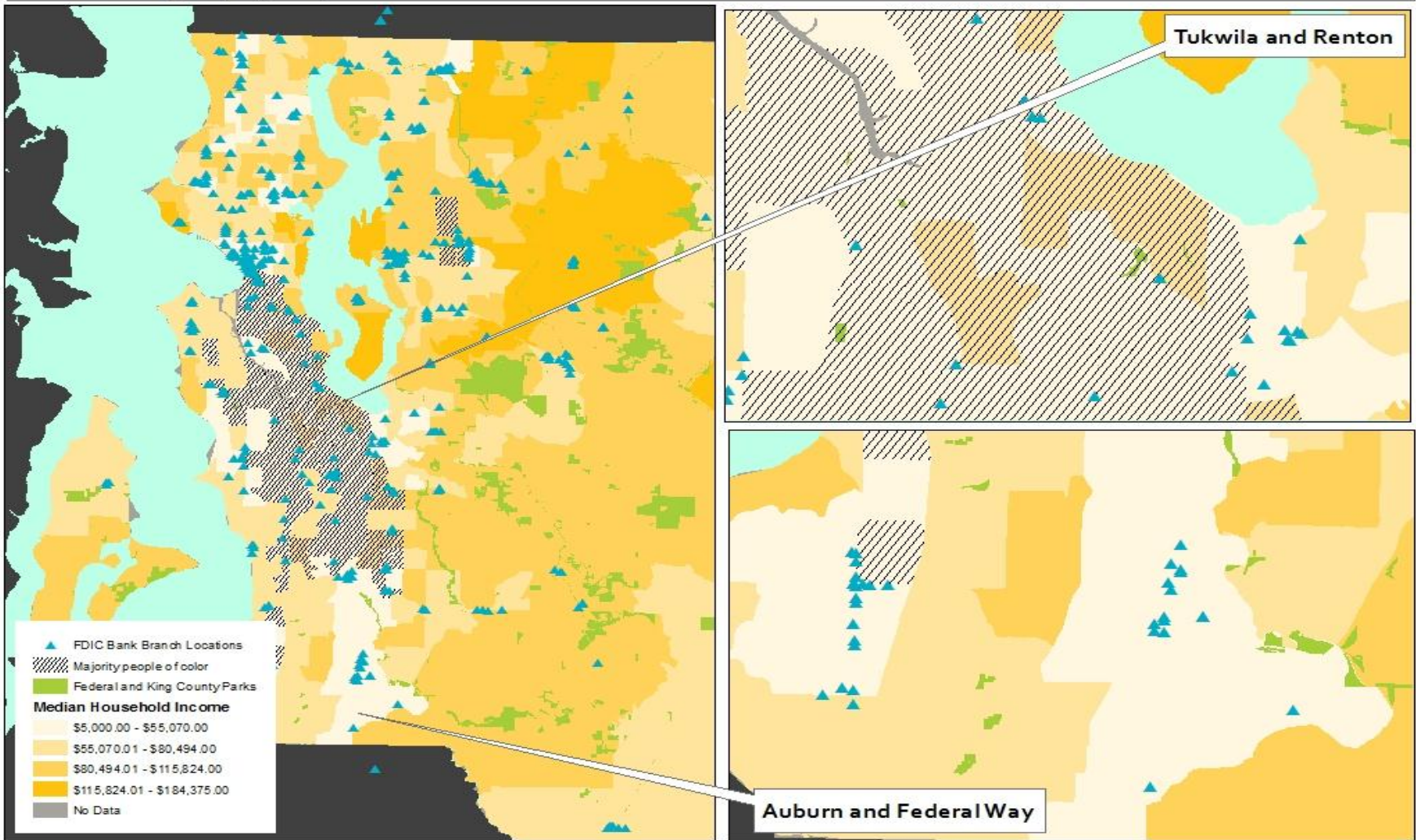
Csi CENTER FOR SOCIAL INCLUSION



People of Color Have Less Access to Bank Locations

**Race, Median Household Income,
and Access to Bank Branches**
Source: U.S. Census, FDIC, King County

Csi CENTER FOR SOCIAL INCLUSION

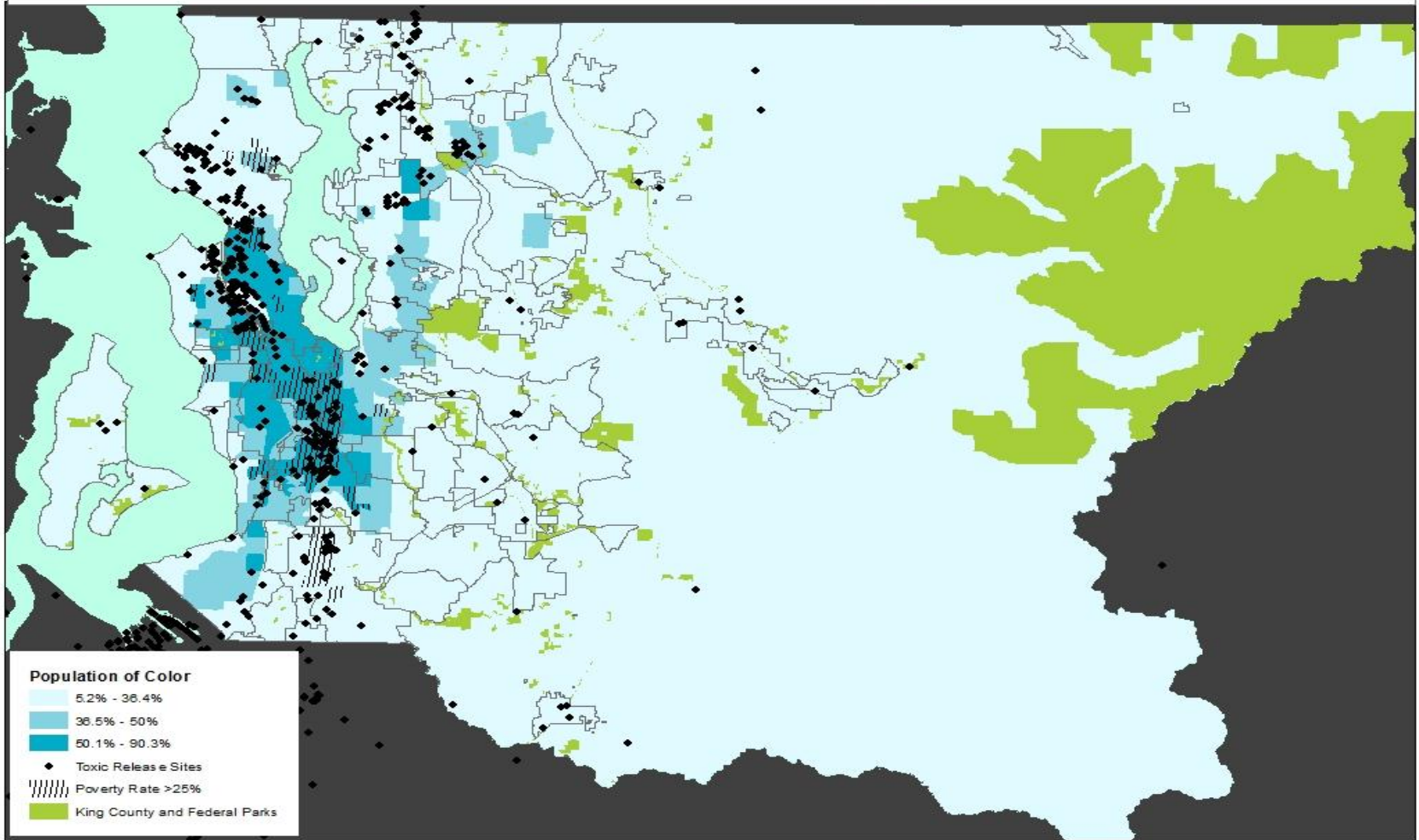


More Environmental Hazards are Located Near People of Color

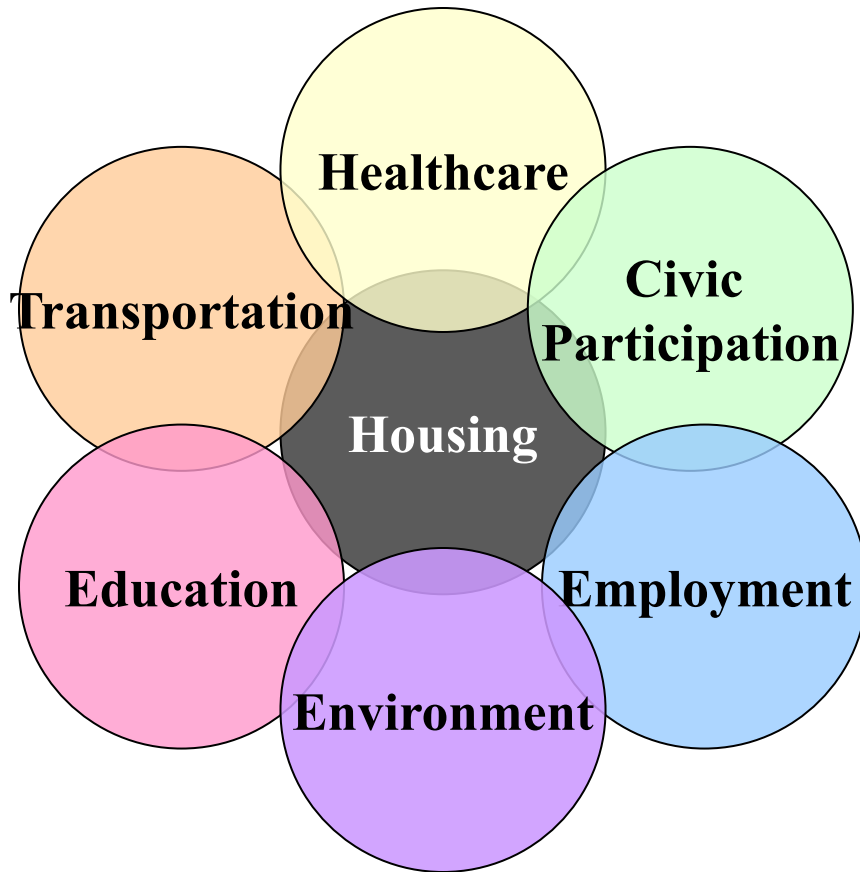
People of Color and Toxic Release Sites

Source: U.S. Census Bureau, King County, EPA, NREL

Csi CENTER FOR SOCIAL INCLUSION

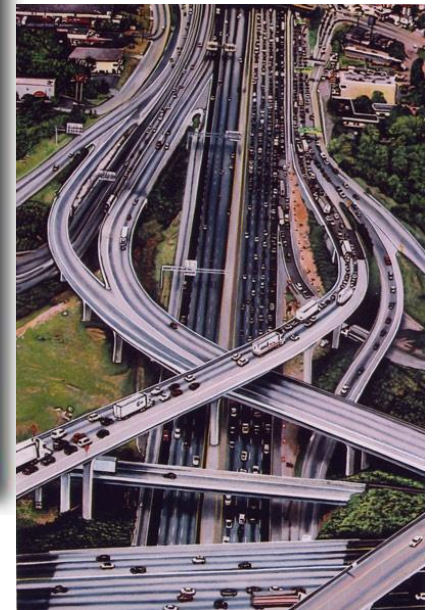
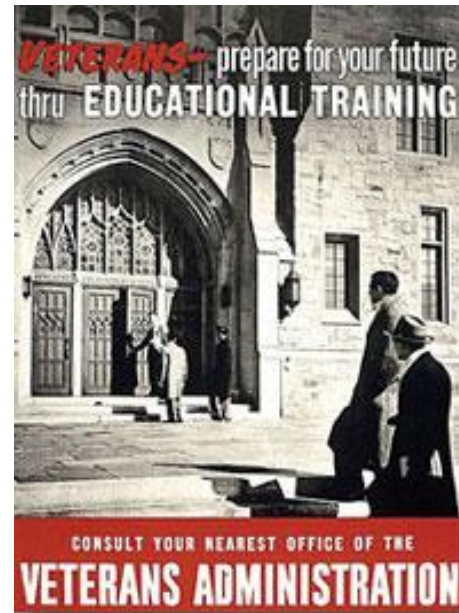
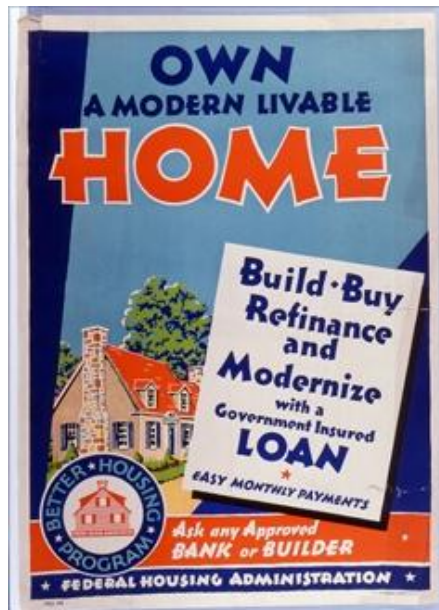


Structural Racialization Defined



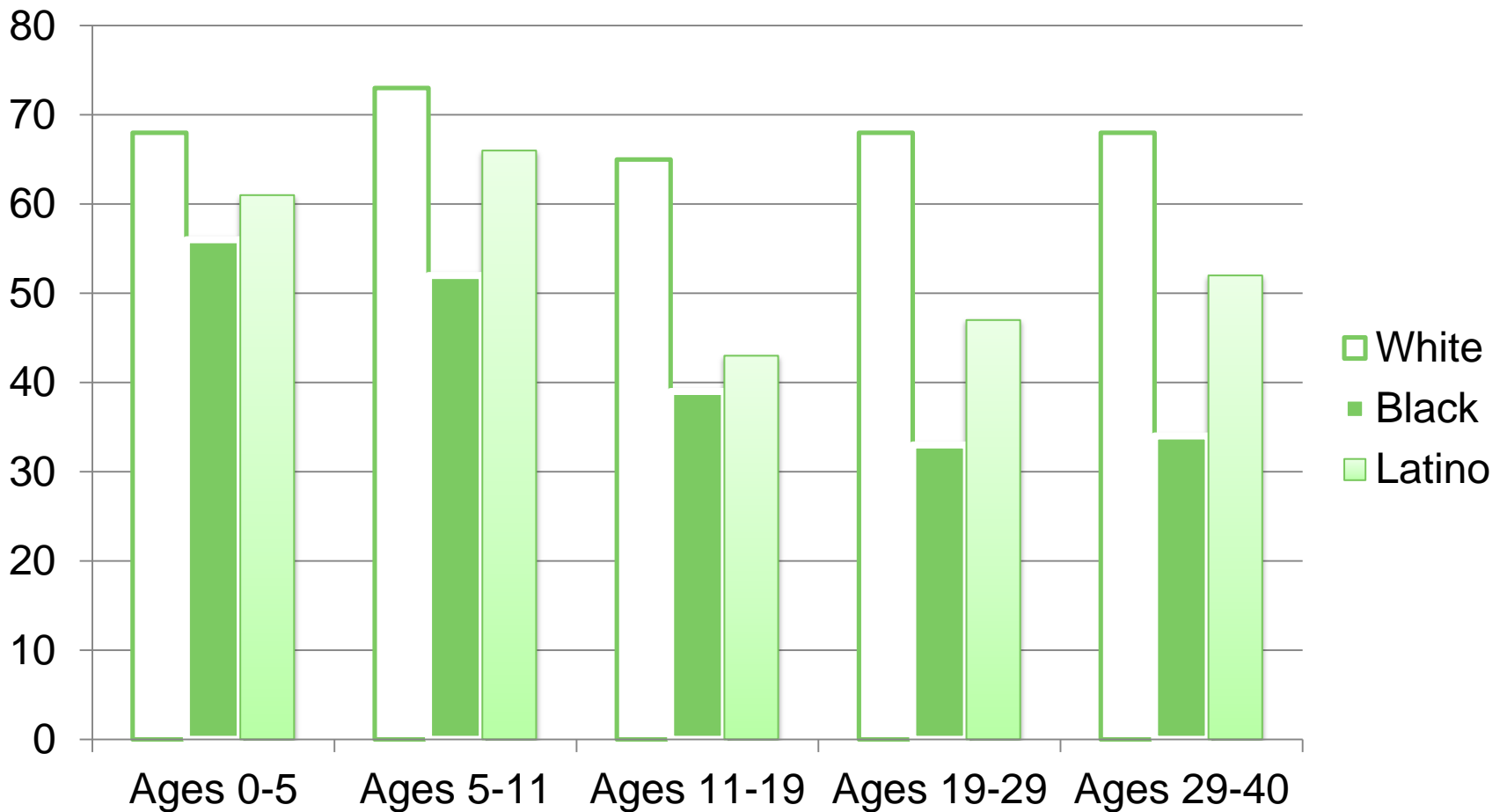
- Multi-institutional (not just institutional racism)
- Policy driven
- Impact on attitudes
- Impact is racialized
- Intent to discriminate not required
- Racial disparities are symptoms

Polices Matter...A LOT!



Who Becomes Middle Class?

<http://www.brookings.edu/~media/research/files/papers/2012/9/20%20pathways%20middle%20class%20sawhill%20winship/0920%20pathways%20middle%20class%20sawhill%20winship.pdf>



Brand New Research from Prof. Tom Shapiro: Income isn't enough

Biggest wealth gap we've seen in 25 years, across income.

Huge wealth disparity even when comparing lowest 25% of earners.

Homeownership accounts for 40% of the growth in the wealth gap.

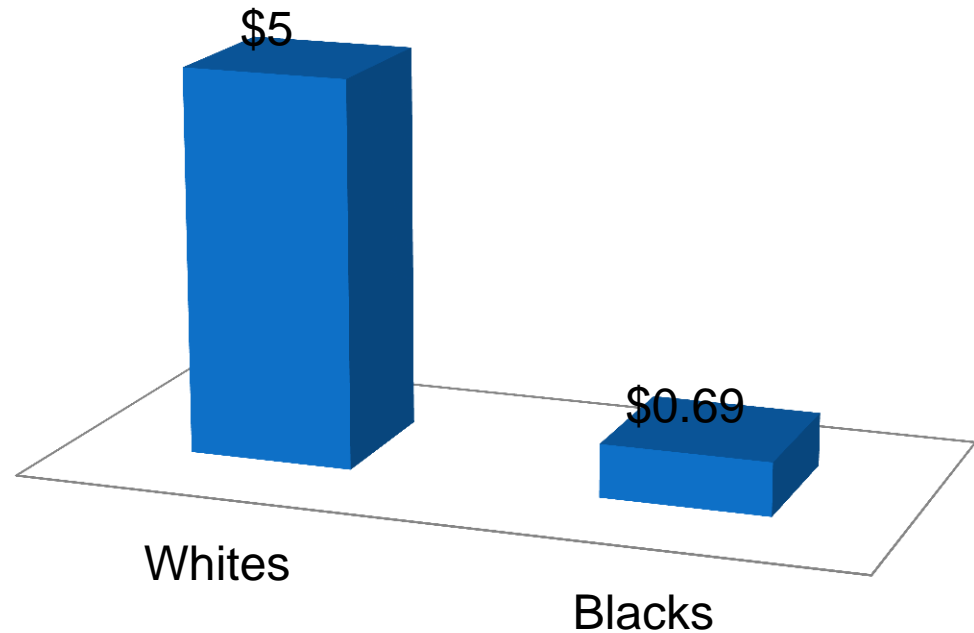
Structural: white Americans buy 5 years sooner and own 26 years, on average, compared to 12 years for Black Americans.

College only accounts for 5% of the gap!

Unemployment only counts for 5% of the gap!

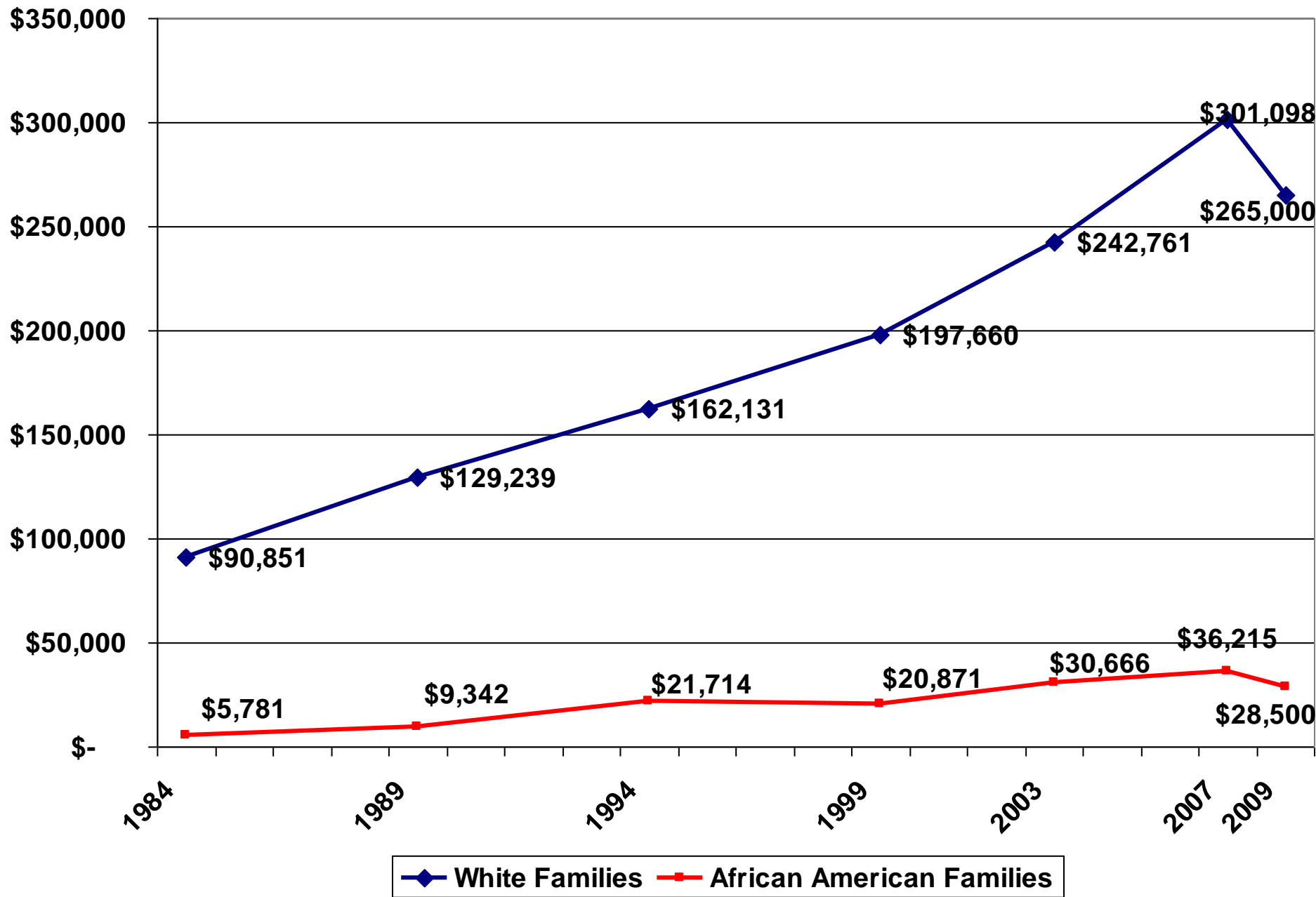
Wealth per \$1 of income

■ Wealth per \$1 of income



Data Source: Panel Study of Income Dynamics 1984-2009

Median Net Worth (1984-2009), by Race



Persistent poverty has a color

- More than **70%** of Black children who grow up in the poorest 1/4 of American neighborhoods **remain** in the poorest 1/4 of neighborhoods as adults, compared to **40%** of whites.

"[A]lmost three out of four black families living in today's poorest, most segregated neighborhoods are the same families that lived in the ghettos of the 1970s. This is true for only 40% of whites." Prof. Pat Sharkey

- Within the last **10 years**, the wealth gap between Black families and White families has increased by **more than \$95,000**.

Shapiro, Thomas et. al. "The Racial Wealth Gap Increases Fourfold." Institute on Assets and Social Policy. May 2010

Race and context matter

- A baby born to a Native American woman with a high school degree is almost 2x as likely to die during the first year of life as a baby born to a Hispanic woman with the same years of education (9.2 vs. 5.3 per 1000 live births)
- A Black man earning less than \$10,000 has a life expectancy at age 25 that is 3 years less than a White man earning the same income
- The rate of new AIDS cases among adults/adolescents is 3x higher among Hispanics (26 per 100,000) than the rate among Whites (7 per 100,000).

King County Metro Transit



***Low-income & minority
County residents***



folks within 1/4 mile of transit:



CENTER FOR SOCIAL INCLUSION

What works? Jacksonville, FL



Businesses getting
\$ to relocate to
Jacksonville



Must pay workers 115% of
FL average wage

<http://ced.berkeley.edu/bpj/2012/08/just-growth-inclusion-and-prosperity-in-americans-metropolitan-regions-by-chris-benner-and-manuel-pastor>



CENTER FOR SOCIAL INCLUSION

ABOUT US | IDEAS | LEADERSHIP | COMMUNICATIONS | PUBLICATIONS | PRESS



SOLUTIONS THAT WORK FOR EVERYONE

Maya Wiley
Executive Director

www.centerforsocialinclusion.org



CENTER FOR SOCIAL INCLUSION