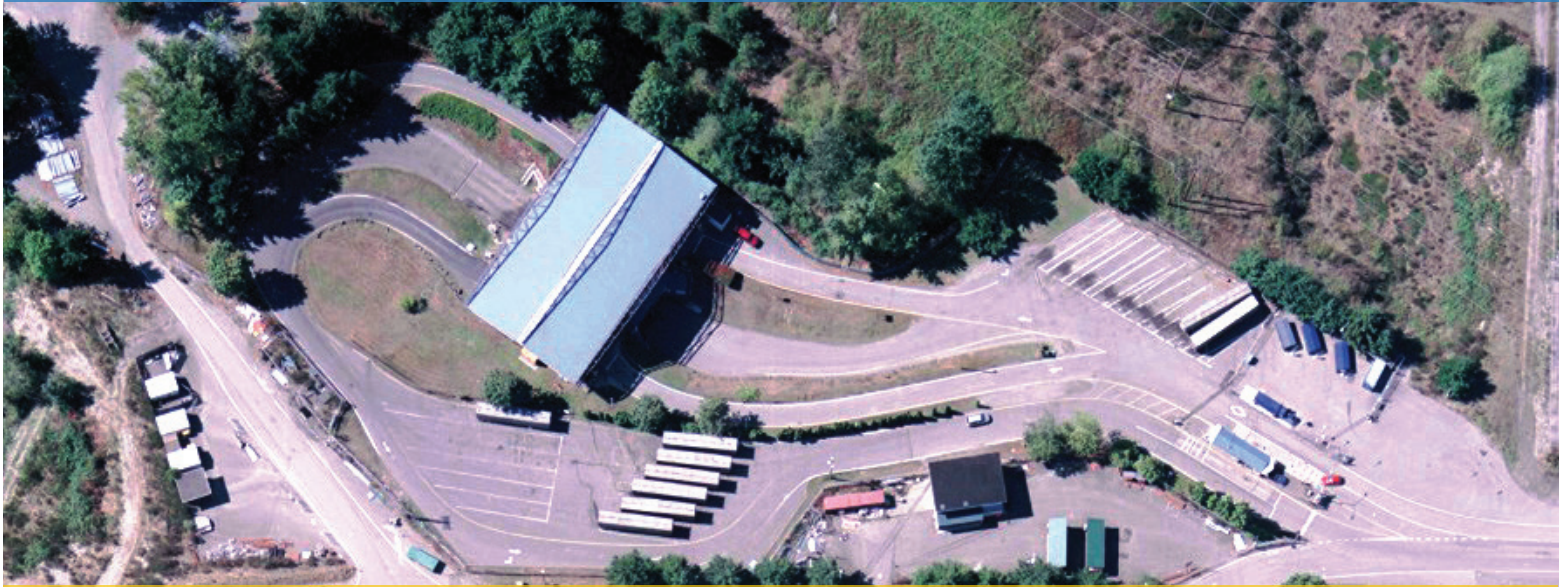


Renton Recycling and Transfer Station



FACT SHEET

3021 NE 4th Street
Renton, Washington 98056
kingcounty.gov/renton

Summer hours of operation

MONDAY	TUESDAY	WEDNESDAY	THURSDAY	FRIDAY	SATURDAY	SUNDAY
7:30am-5pm	7:30am-5pm	7:30am-5pm	7:30am-5pm	7:30am-5pm	8:30am-5:30pm	8:30am-5:30pm

Closed on Thanksgiving, Christmas and New Year's Day

Overview

Renton Recycling and Transfer Station was constructed in the mid-1960s on 13 acres. The station is bordered by the King County Roads maintenance shops on the east side, the King County Parks maintenance shops on the northwest side, and county-owned property on the south and west sides. The facility consists of an open-sided, direct-dump style transfer building, a scalehouse, a no-fee recyclables collection area, and trailer parking area. The station primarily serves residents and businesses from the Renton, Maple Valley, and Newcastle areas.

Vehicle length limits

40 feet. Max combined length limit for vehicles and trailers from bumper to bumper.

What happens to the waste?

The waste is transported by county employees in covered trailers from Renton to the Cedar Hills Regional Landfill, 12 miles away.

What happens to recyclable materials?

Recyclable materials are separated by type and distributed to local, national or international markets for processing into recycled content products. Reusable materials (textiles) are donated to a local non-profit.

Notable feature

- Compactors for cardboard and for comingled recycling reduces the number of truck trips to a recycling facility in Seattle, lowering carbon emissions and transportation costs.



Scalehouse



2023 at a glance

Who are the customers?

88 percent of visits were made by self-haul customers, who contributed 18 percent of the total solid waste received at the station. Commercial customers contributed 82 percent of the total solid waste with 12 percent of the visits.

Tons of solid waste disposed

57,382. This constitutes 7 percent of solid waste of all King County transfer stations.

Total customer visits

66,124

Recycling services

- Cardboard*
- The following can be combined in the large blue “Recyclable Materials” containers, must be empty, clean and dry:
 - Paper, including office paper, junk mail, envelopes, newspapers, magazines, catalogs, paper food boxes, cartons such as milk, juice and broth cartons, paper cups if securely tied in clear plastic bags, and hard and paperback books
 - Cans (aluminum, tin, steel)
 - Glass bottles and jars
 - Empty, clean, and dry plastic bottles, cups, jugs, tubs, pots, food containers, clamshells, trays
 - Lids (3 inches or more)

* These materials must be recycled at facilities that accept these materials for recycling.



Main entrance

2023 Recycling Tonnage

Cardboard	Mixed Paper	Mixed Container	Glass	Textiles	Total
326	107	28	61	35	621

Alternate formats on request

206-477-4466 | TTY Relay: 711



King County

Department of
Natural Resources and Parks
Solid Waste Division

Waste
Prevention

Resource
Recovery

Waste
Disposal