

WEST DUWAMISH WET WEATHER STORAGE FACILITY



King County

Protecting Our Waters

Doing our part on rainy days

MARCH 2023

Thank you for your input!

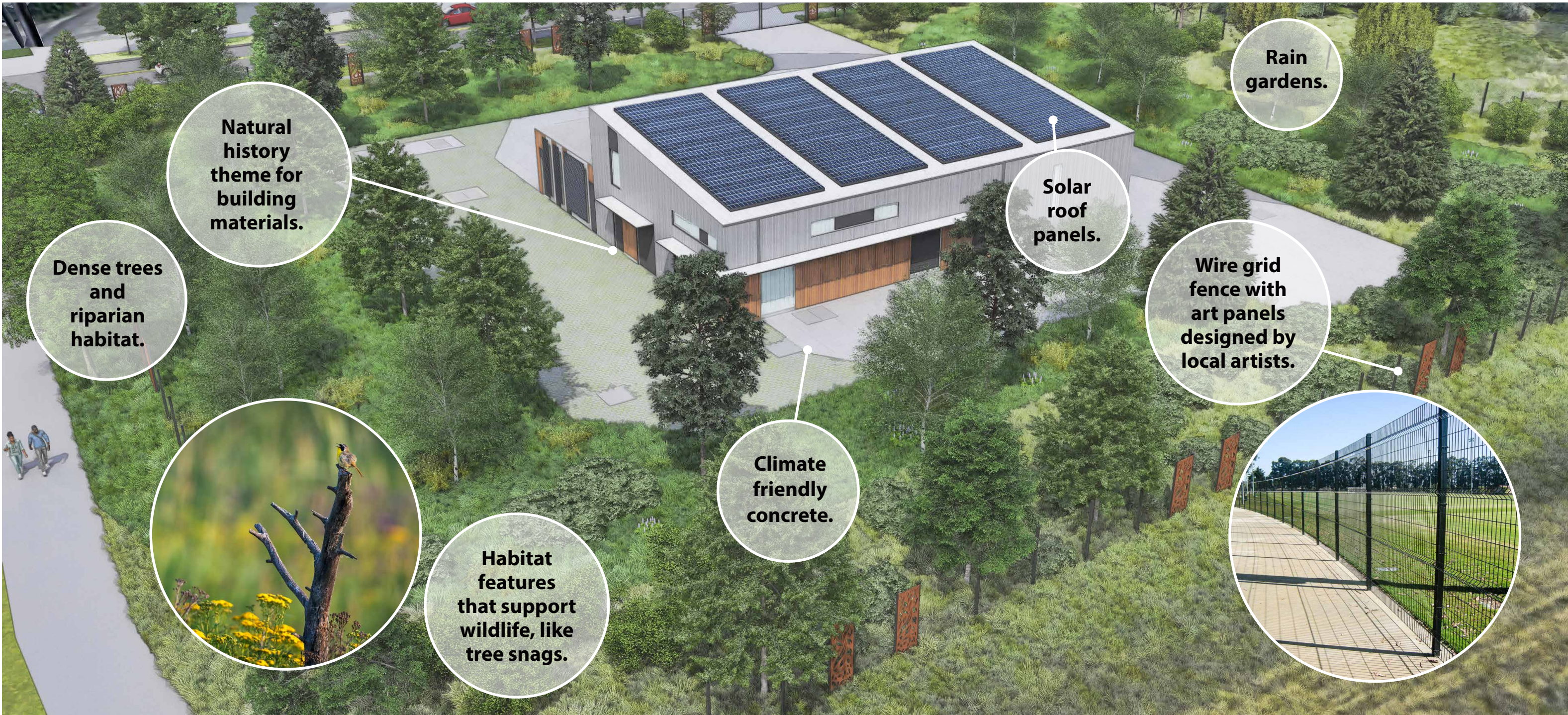
King County will build a 1.25-million-gallon underground storage tank on the west side of the First Avenue Bridge to reduce sewage and stormwater overflows into the Duwamish River during big storms. Water stored in the facility at this site will flow to the West Point Treatment Plant for cleaning before it is safely released into Puget Sound, reducing risks to public health and the environment.

Over the summer, King County collected feedback from the public to help inform elements of the site's design, including fencing, landscaping, and building architecture. We also gathered ideas about how King County can support the broader community.

You may have seen our team at the Duwamish River Festival, SOPASUPA, Marra Farm Fest, or briefings with the South Park Neighborhood Association and the Highland Park Improvement Club as we shared information about the project and opportunities to influence design. We also visited nearby businesses and neighbors during site inspection work. Keep reading to learn what we heard and where we're headed next.



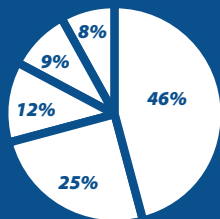
The Storage Facility and surrounding property will reflect your input. It will also include sustainable elements.



Thank you to everyone who took our survey! Here is what we heard from you.

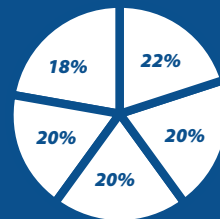
Which type of fencing do you prefer for the project site?

- 46% - Thematic panel inserts
- 25% - Welded wire grid fencing
- 12% - Expanded metal panel fencing
- 9% - Chain link fence in black
- 8% - Security fencing



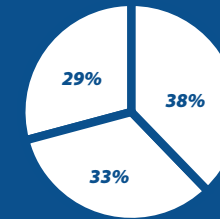
How can we support healthy habitats on the project site?

- 22% - Pollinator plants
- 20% - Mason bee nests
- 20% - Snags for wildlife
- 20% - Osprey nesting poles
- 18% - Bat boxes



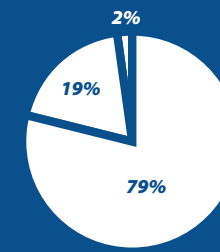
Which type of landscape would you like the site to most closely resemble?

- 38% - A dense Pacific Northwest forest
- 33% - A Pacific Northwest meadow with trees
- 29% - An open Pacific Northwest forest



Which type of building materials should we use on site?

- 79% - Elements from the Natural History theme
- 19% - Elements from the Modern Sustainable theme
- 2% - Other



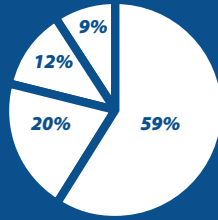
What is your first priority for South Park and Highland Park community benefit projects?

59% - Greening neighborhoods near the site

20% - Building clean water career pathways

12% - Creating Community Connections

9% - Other

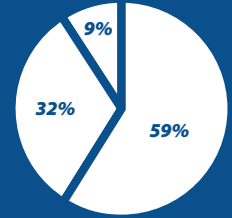


Within the goal of building career pathways, we have several project ideas. Which are most important to you?

59% - Providing connections to workforce opportunities

32% - Organizing and hosting job fairs and tours

9% - Other



“Trick or Tree!” event helps to green the neighborhood

On Saturday, Oct. 29, Highland Park Improvement Club and King County co-hosted a tree pickup and pet costume contest at the Highland Park Corner Store. Over 100 people attended the event, where the project’s community partners DIRT Corps and the Duwamish Valley Youth Corps gave away 150 native trees to private residences and places of worship.



Partnering with our local community and the Mujeres Conectoras

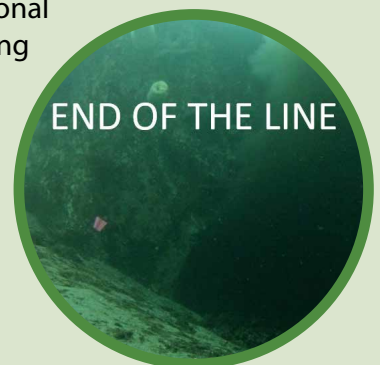
The project team began a partnership with a group of Latino women in South Park, the Mujeres Conectoras. Group leaders have participated in several sessions to learn about combined sewer overflows (CSOs) and their solutions, as well as details of this project. This leadership group will convene a series of focus groups to raise awareness about the project and share and gather ideas for how our project can support this community.



Art brings intrigue to the “END OF THE LINE”

The “end of the line” is where the County’s wastewater system meets one of our regional bodies of water. King County will commission two artists or artist-led teams from King County in partnership with 4Culture to create meaningful artwork that engages issues of social, economic, and environmental relevance. The funding for this public art was approved by the Public Art Advisory Committee, with 4Culture managing the process. The Call to Artists went out in November and December of 2022, generating 21 responses from local artists. In the new year, the selection committee will meet to choose the artists.

We are excited to partner with the selected artist to help stimulate curiosity and raise awareness about our largely invisible Combined Sewer Overflow (CSO) system and the end of the line. Stay tuned to learn more!



From big projects to backyard rain gardens, King County WTD is committed to Duwamish Valley communities.

- > Georgetown Wet Weather Treatment Station
- > GSI Mini Grants
- > Lower Duwamish Cleanup
- > RainWise



Learn more!






How to Stay Informed

- Visit our project website to sign up for email or text alerts and learn more:

 kingcounty.gov/westduwamish-cso

- Call or email Demmelash Adera:

 **206-263-2340**

 deadera@kingcounty.gov

What's Next

Moving forward, the project team will finalize design plans. We are committed to providing regular updates on our progress as we approach the estimated start of construction in 2025.



King County is building a storage facility near South Park to protect the Duwamish River during large storms. Read inside about how design is progressing to reflect community priorities. With questions, call Demmelash Adera at 206 263 2340. An interpreter will be provided at no charge.



El condado de King está construyendo una instalación de almacenamiento cerca del South Park para proteger el río Duwamish durante las fuertes tormentas. Lea en el interior para enterarse de cómo progresa el diseño para reflejar las prioridades de la comunidad. Si tiene alguna pregunta, llame a Demmelash Adera al 206 263 2340. Podrá disponer de un intérprete sin cargo.



King 县正在 South Park 附近修建雨水调蓄池, 以便在大风暴天气保护 Duwamish River。请阅读文章内容, 了解社区重点事项是否已在项目设计中得以体现。如有疑问, 请致电 Demmelash Adera, 联系电话: 206 263 2340。我们将免费为您提供一名口译。



King 郡正在 South Park 附近修建儲水設施, 保護 Duwamish River 免受大風暴的危害。請點擊閱讀, 瞭解設計進程以及我們如何將社區需求置於首位。如有任何疑問, 歡迎撥打 206 263 2340 致電 Demmelash Adera。我們將為您提供免費翻譯。



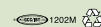
Quận King sắp xây cất một khu bể chứa gần South Park để bảo vệ Duwamish River khi xảy ra mưa lớn. Mời quý vị đọc bài viết bên trong để biết thiết kế đang nỗ lực phản ánh các ưu tiên của cộng đồng ra sao. Nếu có câu hỏi, xin gọi cho Demmelash Adera theo số 206 263 2340. Sẽ có thông dịch viên hỗ trợ miễn phí



King County

Alternative formats available

206-477-5371 or TTY relay: 711

Printed on recycled stock. Please recycle. 
File: 2212_13117E_WestDuwamishWWSFacility_Newsletter.indd

@KingCountyWTD

