

**September 14, 2024
thru March 28, 2025**
Del 14 de septiembre de 2024
al 28 de marzo de 2025

Burien Transit Center, Highline Medical Center, Gregory Heights



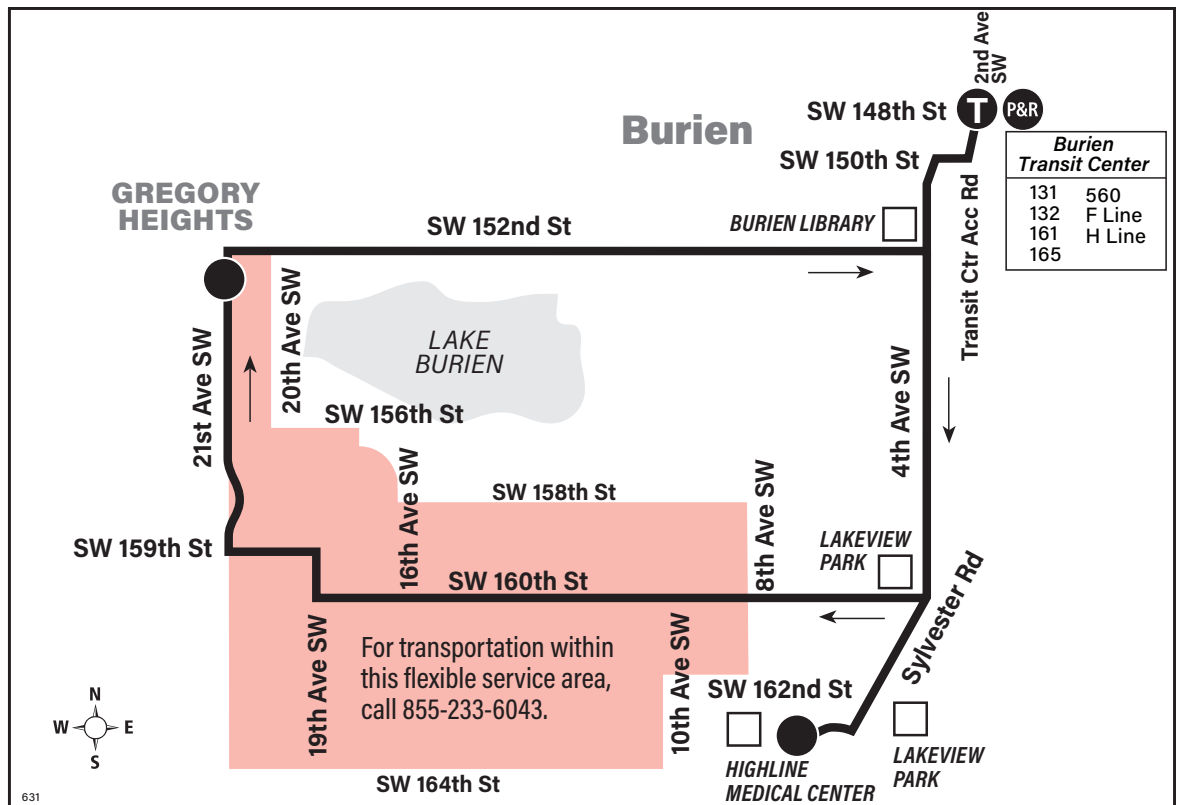
This route does not operate on weekends or holidays.

Snow/ Emergency Service

Servicio en caso de nieve o emergencia

During snow conditions, service on this route may be interrupted due to inoperable road conditions. In the rare event that Metro declares an emergency, it will not operate. Visit kingcounty.gov/metro/snow and sign up for **Transit Alerts** to stay informed during adverse conditions, or call the reservation office at 855-233-6043.

Durante las condiciones de nieve, el servicio en esta ruta puede ser interrumpido debido a condiciones de carretera inoperables. En el raro caso de que Metro declare una emergencia, no funcionará. Visite kingcounty.gov/metro/snow y regístrese para recibir alertas de tránsito para mantenerse informado durante condiciones adversas, o llame a la oficina de reservas al 855-233-6043.



MAP LEGEND LEYENDA DEL MAPA

— Makes all regular stops. *Hace todas las paradas regulares.*

— Alternative/flexible service areas. By reservation only, 2 hours in advance. *Areas de servicio alternativas / flexibles. Solo con reserva, con al menos 2 horas de antelación.*

● TIME POINT / PUNTO DE TIEMPO: Street intersection from which departure times are shown on the schedules. *Intersección de la calle desde donde se muestran los horarios de salida.*

T TIME POINT & TRANSFER POINT / PUNTO DE TIEMPO & PUNTO DE TRANSFERENCIA: Street intersection from which departure times are shown on the schedules. Also route intersection for transferring to indicated route(s). *Intersección de la calle desde donde se muestran los horarios de salida. También la intersección de la ruta para transferir a la(s) ruta(s) indicada(s).*

□ Landmark. *El punto de referencia.*

P&R PARK & RIDE: Free or pay parking area. *Zona de aparcamiento gratuito o de pago.*



Text your bus stop number to 62550 to get real-time bus arrival times on your mobile device.

Transit Alerts



Get service alerts and rider news by email or text. Register at kingcounty.gov/metro/signup

Holiday Information
Información sobre días festivos

There is no service on this route on weekends or the following holidays. *No hay servicio en esta ruta los fines de semana ni el siguiente feriados:*

Thanksgiving <i>Día de acción de gracias</i>	Nov. 28 <i>el 28 de noviembre</i>
Christmas <i>Navidad</i>	Dec. 25 <i>el 25 de diciembre</i>
New Year <i>Año nuevo</i>	Jan. 1, 2025 <i>el 1 de enero de 2025</i>

DART Service Information

Gregory Heights accessible transit offers you two transportation services: fixed and limited flexible routing.

Route 631 provides flexible service in portions of the Gregory Heights area at the following times:

- Monday thru Friday: 8 a.m. - 4:30 p.m.

Limited Flexible Routing

You can request off-route trips within the flexible service area by calling the reservation office. You need to make your trip request at least two hours before you want to be picked up, and you can make your reservations for 30 days at a time, up to 30 days in advance. Reservations will be taken on a first-come, first-served bases.

Reservations can be made by calling **1-855-233-6043 (voice)**, or **1-800-246-1646 (TTY)** during the following hours:

- Monday-Friday 5 a.m. - 11 p.m.
- Saturday 7:30 a.m. - 9:30 p.m.
- Sunday/Holidays 9:30 a.m. - 6:30 p.m.

Leave a message at all other times.

Make reservations online at <http://www.hope1 Line.org/programs/dart.htm>

A limited number of off-route deviations, only, can be made on any given trip. Vans can deviate from their fixed routes to serve other locations within the service area, but they can not necessarily provide door-to-door service due to safety and other operational considerations (narrow streets, cul-desacs, etc.). You may need to board/deboard at a location a block or more away from the location you requested.

Scheduled Service / Fixed Routing

In addition to the reserved, flexible service mentioned above, Route 631 offers fixed-route, scheduled service. Please refer to the schedule in this timetable. For more information, call Metro Customer Information at 206-553-3000 or visit www.kingcounty.gov/metroCenter. At the Transit Center, transfers can be made to routes serving downtown Seattle, West Seattle, Renton, SeaTac and Bellevue. For more information, call Metro Customer Information at 206-553-3000 or visit www.kingcounty.gov/metro

Route 631 Monday thru Friday to Gregory Heights, Burien Transit Center

Servicio de lunes a viernes a Gregory Heights, Burien Transit Center

		Gregory Heights	
Burien TC Bay 6	Highline Medical Center	21st Ave SW & SW 152nd St	Burien TC Bay 2
Stop #52306	Stop #53978	Stop #51330	Stop #52302
6:27	6:31	6:39	6:47
6:57	7:01	7:09	7:17
7:27	7:31	7:39	7:47
7:57	8:01	8:09	8:17
8:27	8:31	8:39	8:47
8:57	9:01	9:09	9:17
9:27	9:31	9:39	9:47
9:57	10:01	10:09	10:17
10:27	10:31	10:39	10:47
10:57	11:01	11:09	11:17
11:27	11:31	11:39	11:47
12:42	12:46	12:54	1:02
1:12	1:16	1:24	1:32
1:42	1:46	1:54	2:02
2:12	2:16	2:24	2:32
2:42	2:46	2:54	3:02
3:12	3:16	3:24	3:32
3:42	3:46	3:54	4:02
4:12	4:16	4:24	4:32
4:42	4:46	4:54	5:02
5:12	5:16	5:24	5:32
5:42	5:46	5:54	6:02
6:12	6:16	6:24	6:32
6:42	6:46	6:54	7:02
7:12	7:16	7:24	7:32
7:42	7:46	7:54	8:02

Bold PM time

What To Pay
Cuánto pagar

Adults (19 and older) <i>Adultos</i> (19 años y mayor)	\$2.75
Children and Youth (0-18 yrs) <i>Niños y jóvenes</i> (0-18 años)	FREE
ORCA LIFT Fare* <i>Tarifa ORCA LIFT*</i>	\$1.00
RRFP cardholders , (registered seniors 65+, riders with disabilities, Medicare card holders) Titulares de Regional Reduced Fare Permit (RRFP, Tarjeta Regional de Descuento), (adultos mayores de 65 años registrados, pasajeros con discapacidades, titulares de tarjetas de Medicare)	\$1.00

**Income Qualified *Ingresos que reúnan los requisitos*

How to Pay

Always pay your fare when you board. Pay with your ORCA card, exact change (drivers do not carry cash), a bus ticket, or the Transit GO app. Show your activated Transit GO ticket or valid transfer (valid on Metro only) to the driver. See "How to Pay" on Metro's website for more information.



This symbol indicates a change in service. Watch for it in buses, at bus stops and at timetable displays.