



Welcome

- ✦ Air Monitoring and Landscape Plan
- ✦ Phase 1 Presentation and Survey for Phase 2 Work



King County
International Airport
Boeing Field



Agenda

- ✦ Land Acknowledgement
- ✦ Introduction to the Airport
 - ✦ Comment from the Airport Director
- ✦ Expected workshop outcomes
- ✦ Project Outputs to date
- ✦ Question time
 - ✦ Time to fill out the survey
- ✦ Next Steps

Zoom 101

- ✦ Questions after presentations
- ✦ Raise your hand OR
 - ✦ Enter your question in the Q&A
- ✦ If Called on State your name
- ✦ Provide anonymous feedback:
[KCIACommunityOutreach@kingcount
y.gov](mailto:KCIACommunityOutreach@kingcounty.gov)
- ✦ Will be recorded and available on our website: [Community Engagement Opportunities - King County](#)



Chat



Raise Hand



Q&A



King County
International Airport
Boeing Field

Land Acknowledgement

"I would like to begin by acknowledging that this gathering is originated on the traditional lands of the Coast Salish Peoples: the Duwamish, Muckleshoot, Snohomish, and Snoqualmie, among many others. I am presenting to you from King County International Airport--in the heart of Seattle--and situated on the ancestral lands of the Duwamish, specifically.

It is with deep respect and gratitude that we honor the Coast Salish peoples, past and present as well as the land itself. We put our gratitude into action when we support and uplift the voices and priorities of our Indigenous siblings now and into the future."

Message from John Parrott Airport Director



King County
International Airport
Boeing Field





King County
International Airport
Boeing Field

Working Group Members Here Today



Brian Bartley
(he/him)
Policy Intern
KCIA



Peter Dumaliang
(he/him)
Environmental Scientist
KCIA



Samantha Fisher
(she/her)
Environmental Scientist
Haley & Aldrich



Ali Lee (She/Her)
Health, Equity &
Community Builder
Health & Equity Alliance
KCIACC



Kevin Nuechterlein
(he/him)
Capital Program Manager
KCIA



Maritza Lauriano Ortega
(she/her)
Environmental Justice
Educator & Organizer
El Centro de la Raza



Steve Rakowski
(he/him)
Chemical Engineer
Haley & Aldrich



Phil Swartzengruber Ph.D.
(he/him)
Air Quality Scientist
PSCAA



Matthew Sykora
(he/him)
Properties and Business
Development, KCIA



Julie Wukelic
(she/her)
Principal Engineer
Haley & Aldrich



What is KCIA

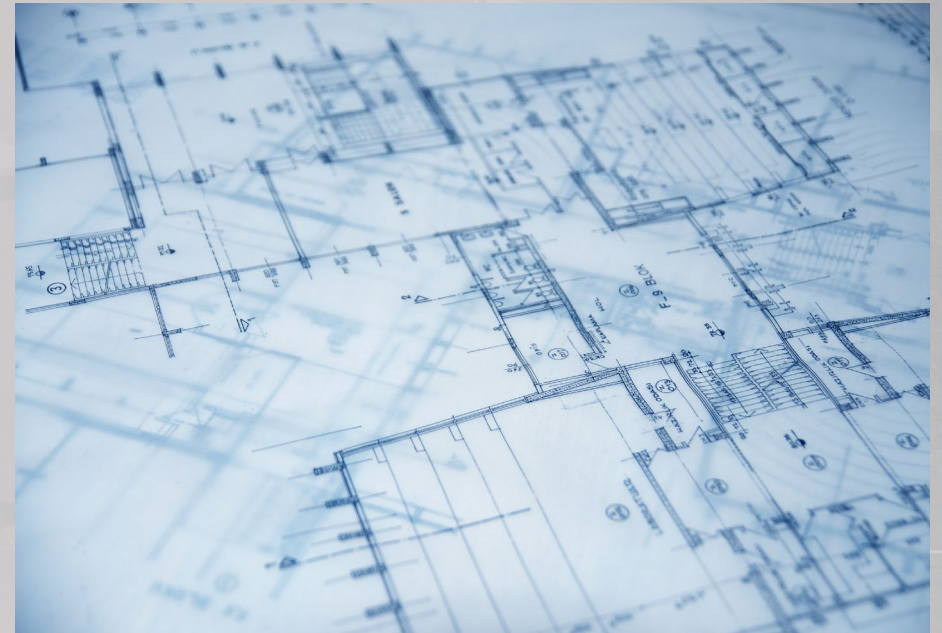
- ✦ In 1928 voters approved a plan for construction of the airport and served as the region's primary airport until the late 1940's when SeaTac opened.
- ✦ King County Airport is owned by King County and managed by the County's Department of Executive Services
- ✦ The Airport is financed by fees paid by airport tenants and customers and receives no general tax revenues.





Expected Workshop Outcomes

- ✦ Motivation for workshop
 - ✦ Understand and align with community priorities
- ✦ Project Overview and Progress to Date
 - ✦ Landscape Comprehensive Plan
 - ✦ Air Monitoring Plan
- ✦ Discuss Survey Results to Date
 - ✦ Feedback from survey will inform next phase of both projects
- ✦ Encourage Survey Participation
- ✦ Discuss the Next Phase of Both Projects





Project Introductions

- ✦ High Community Interest Projects
- ✦ Developed Community Working Groups
- ✦ Aligned with King County Strategic Climate Action Plan (SCAP)





Landscape Plan

✦ Project Goal:

- ✦ Develop an airport landscape plan with community feedback to determine the appropriate vegetation and location for plantings around the airport
- ✦ Then develop a design and start planting

✦ Phase 1

- ✦ KCIA Plant List
- ✦ July 2021 - June 2022

✦ Phase 2

- ✦ Determine best types of vegetation and locations based off the developed plant list and survey results
- ✦ Develop concepts/alternatives
- ✦ Design process
- ✦ July 2022 – December 2022

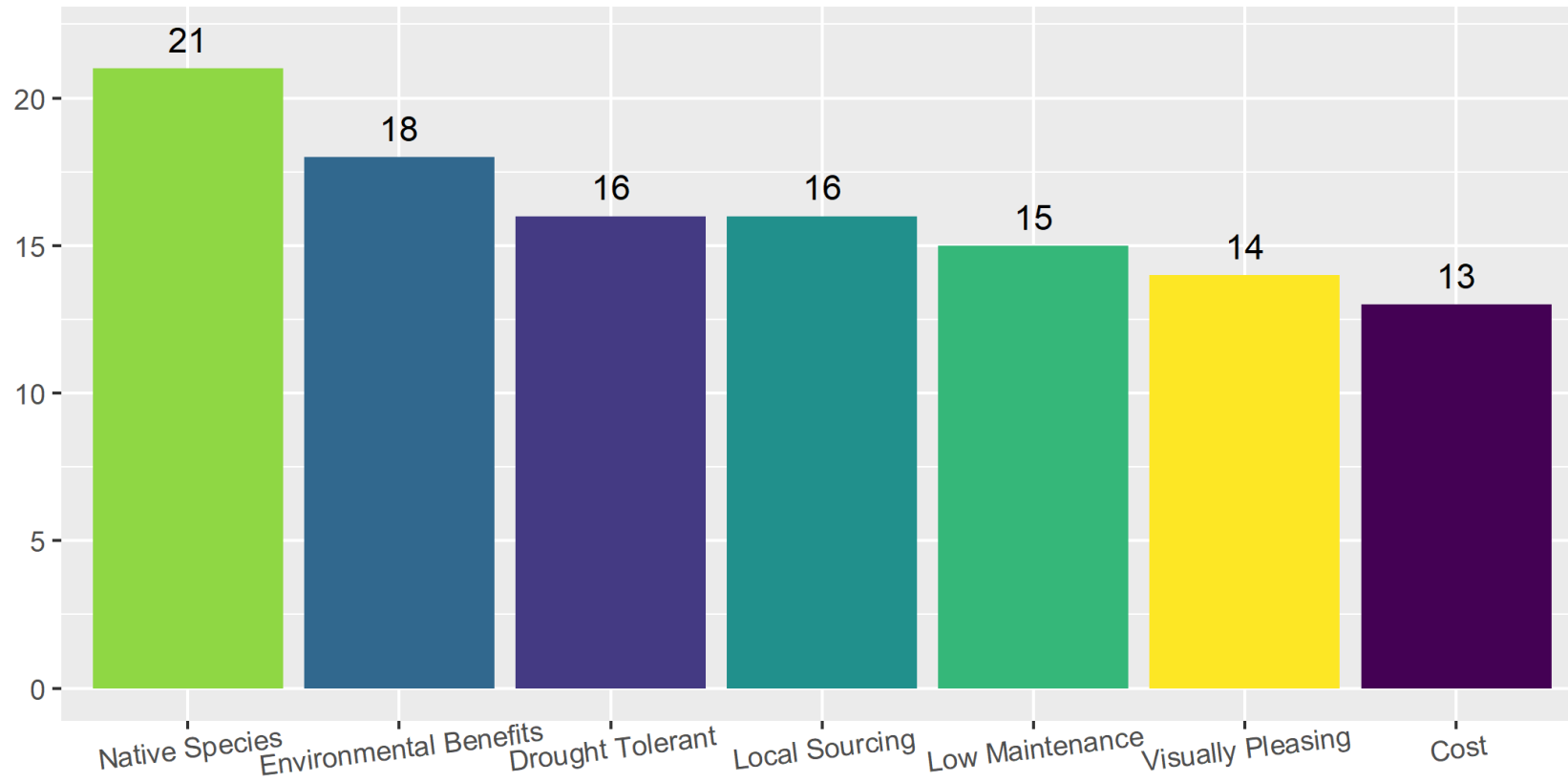
KCIA Landscaping Plan - Phase I Preliminary Draft Plant List GROUND COVER 1/17/2022								
Common Name	Latin Name/Genus	Native	Approximate Height	Deciduous	Evergreen	Sun	Partial Shade	Shade
Beach Strawberry	<i>Fragaria chiloensis</i>	x	1'			x	x	
Black Mondo Grass	<i>Ophiopogon planiscapus</i> 'Nigrescens'		1'					
Blue Fescue	<i>Festuca glauca</i>		1'					
Bunchberry	<i>Cornus canadensis</i>	x	1'	x			x	x
Bressingham Ruby Berginia	<i>Bergenia</i> spp.		1'		x			
Camass, Common	<i>Camassia quamash</i>	x	1'			x	x	
Canadian Reed; Blue Joint	<i>Calamagrostis canadensis</i>		4'					
Carpet Bugle	<i>Ajuga reptans</i>		1'					
Creeping Juniper	<i>Juniperus horizontalis</i>		<1'					
Dwarf Mondo Grass	<i>Ophiopogon japonicus</i> 'Nana'		1'					
Feather Reed Grass	<i>Calamagrostis x acutiflora</i> 'Overdam'		3'					
Fern Leaved Clematis	<i>Clematis cirrhosa</i> var. <i>balearica</i>		12'		x			
Goldenrod	<i>Solidago canadensis</i>	x	4'			x	x	
Hamelia Fountain Grass	<i>Pennisetum alopecuroides</i> 'Hamelii'		3'-5'					
Mahala Mat	<i>Ceanothus prostratus</i>		<1'					
Mountain Heather	<i>Phyllodoce</i> spp.		1'					
Native Phlox	<i>Phlox</i> spp.		2'					
Oregon Sunshine	<i>Eriophyllum lanatum</i>		<1'-3'	x		x		
Pacific Bleeding Heart	<i>Dicentra formosa</i>		1'-2'	x				x
Palace Purple	<i>Heuchera</i> 'Palace Purple'		2'					
Purple Coneflower	<i>Echinacea purpurea</i>		5'					
Sawbeak Sedge	<i>Carex stipata</i>		2'					
Scotch Heather	<i>Calluna vulgaris</i>		<1'-2'					
Siberian Iris	<i>Iris sibirica</i>		3'					
Slough Grass	<i>Beckmannia syzigachne</i>		3'					
Sword Fern	<i>Polystichum munitum</i>	x	3'		x	x	x	x
Wapato; Arrowhead	<i>Sagittaria latifolia</i>		1'-3'	x		x	x	x
Water Foxtail	<i>Alopecurus geniculatus</i>		<1'-2'	x		x	x	
References								
SWP/SDOT - MLP List: Saving Water Partnership/ Mixture Living Plants: Variety of plants that								



Survey Results to Date

Community Landscape Priorities

Count of all positive responses to: Please rank characteristics for selecting plants.





Survey Results to Date

Are there any local landscaped areas you like?

- ✦ *"Arboretum, sculpture park, most excellent landscaping in Seattle is on private land though. Mature and well maintained shrubbery, ornamentals or local trees."*
- ✦ *"I like the Maple School ravine, and the REI flagship exterior landscaping, they remind me of being in a Pacific Northwest coastal native forest!"*



Air Monitoring

✦ Project Goal:

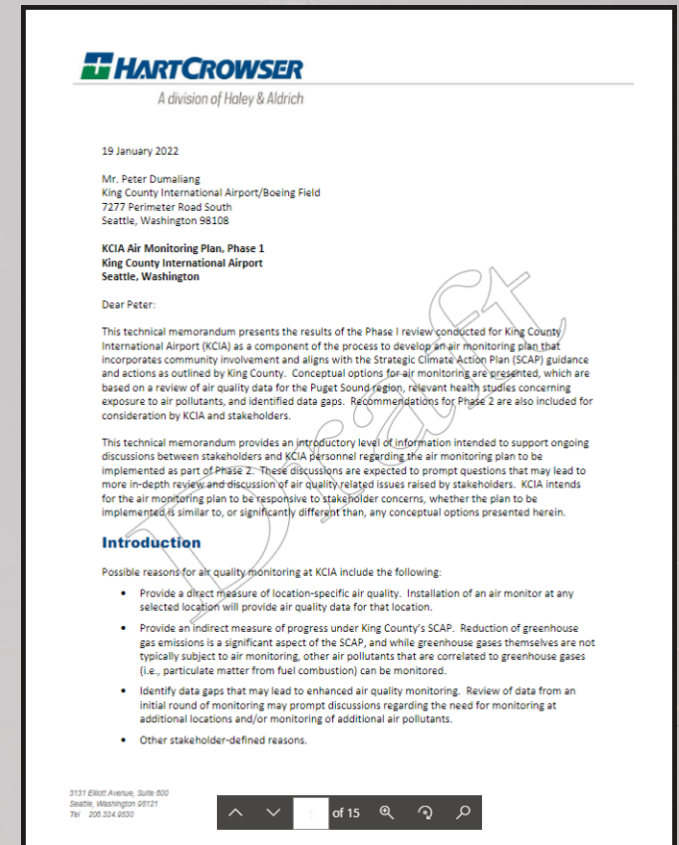
- ✦ With community feedback, develop an air monitoring plan to determine the type of air monitors and installation locations
- ✦ Then install and operate those monitors

✦ Phase 1

- ✦ Air Monitoring Technical Memo
- ✦ July 2021 – June 2022

✦ Phase 2

- ✦ Determine air monitor type and locations based off Technical memo and survey results
- ✦ Procure and install air monitors
- ✦ July 2022 – December 2022

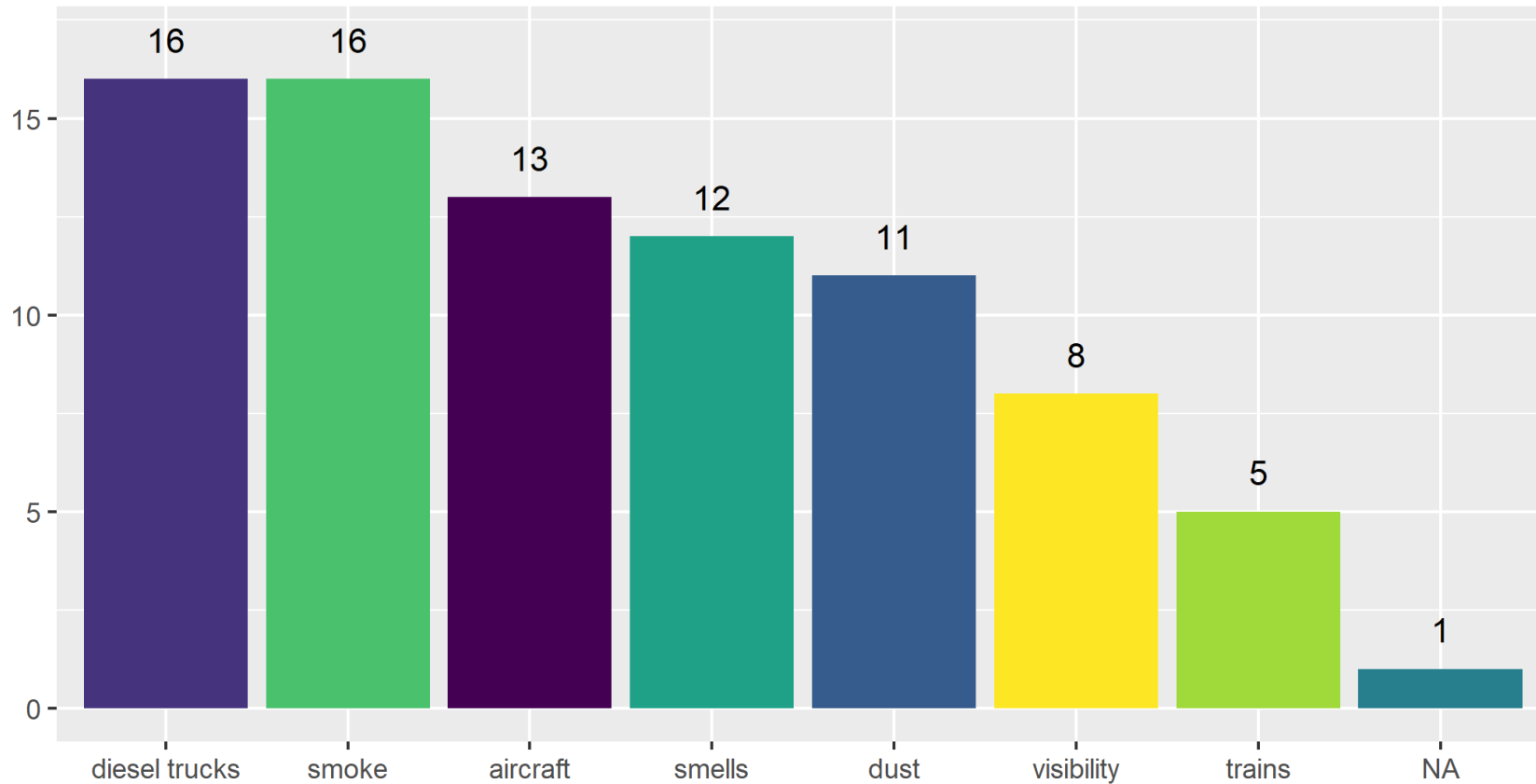




Survey Results to Date

Community Air Quality Indicators

Responses to: What makes you think about air quality?





Survey Results to Date

Where would you like to see an air monitor within KCIA property?

- ✦ "Either near Ruby Chow or the powerplant"
- ✦ "The residential areas surrounding the airport."
- ✦ "South Park, Georgetown, Delridge, SODO"
- ✦ "Georgetown"

King County Int. Airport – Public Meeting

Puget Sound Clean Air Agency: Activities Near the Duwamish Valley

May 17, 2022



PUGET SOUND
Clean Air Agency



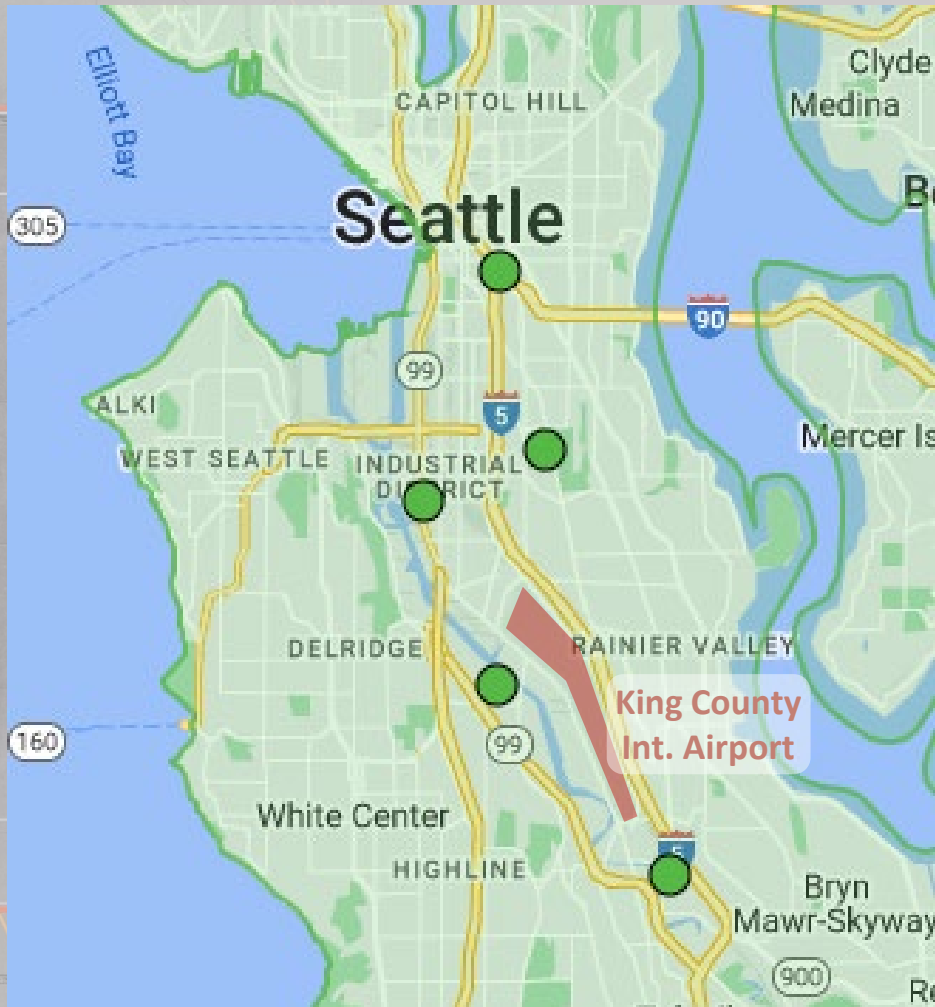
Phil Swartzendruber, Ph.D.

Puget Sound Clean Air Agency



- Special purpose regional government chartered by state law in 1967
- Oversee outdoor air quality in four counties
- Provide air quality forecasts and education
- Permit and inspect industrial sources
- Focus on transportation and wood smoke (recently wildfire smoke too)
- In addition to enforcement, we promote partnerships and incentives to improve air quality

Activities Near KCIA and Duwamish River Valley



❖ Permanent monitors at 5 sites ●



❖ EPA Grant (from 2020) for Special Toxics Study focused on Duwamish Valley

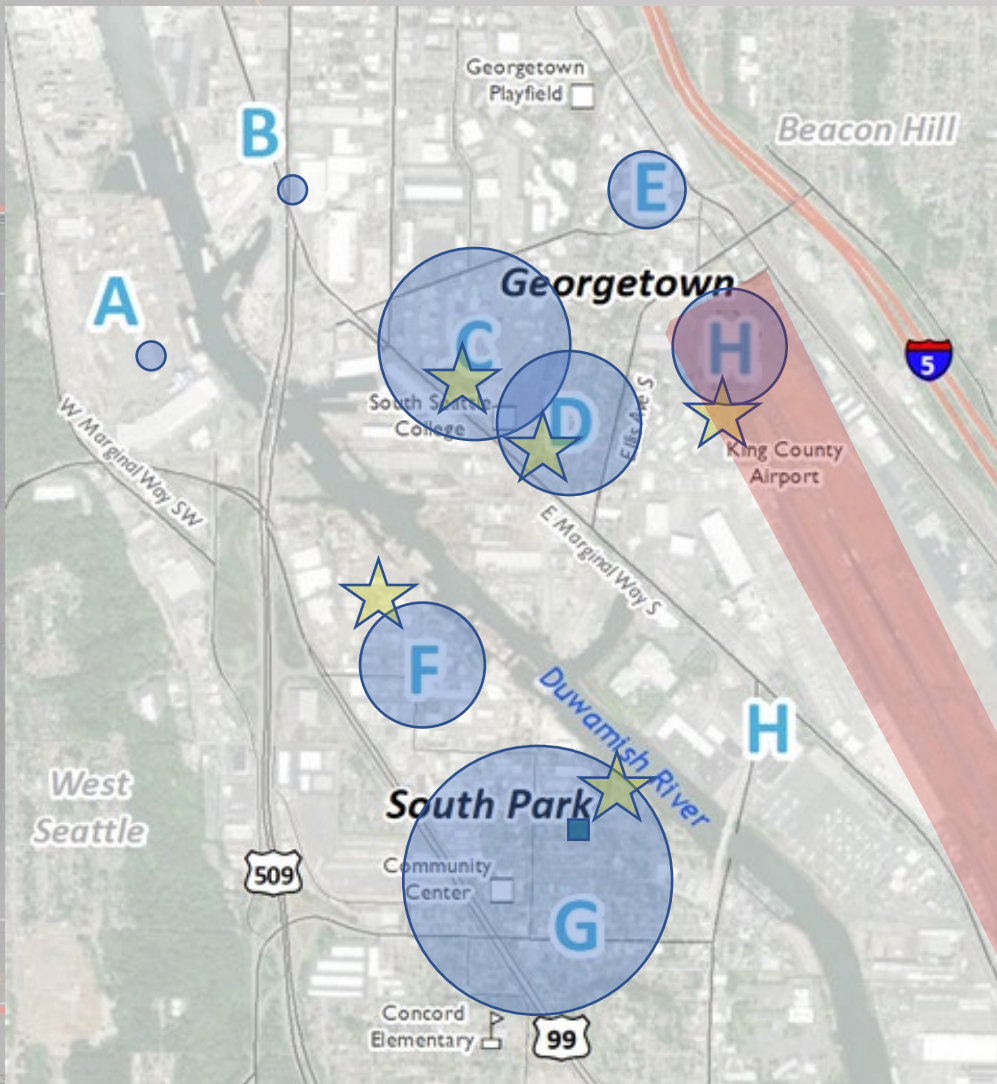
➤ Includes Duwamish Valley community-led temporary monitor site selection



❖ In partnership with several community groups, applied for another EPA grant (2022) to develop a monitoring trailer to place where communities have interest

2021 DRV Special Toxics Study: Community Directed Sampling

- Survey conducted earlier in 2022 to get locations of concern
- From these results, we are working to deploy 5 monitors for 3–6 months in mid 2022



- ★ = Potential locations we identified for sampling
- = Level of community interest
- = Agency permanent fine particle monitor

Other ways to get involved

- More about the air toxics study: pscleanair.gov/DVAirToxics
- Learn more and engage with DRCC's Clean Air Program: drcc.org/clean-air-program
- Duwamish Valley Focus Community Page: pscleanair.gov/385/Duwamish-Valley
- Check pscleanair.gov for current information on air pollution levels and forecast
- Make a DIY Filter Fan: pscleanair.gov/525/DIY-Air-Filter
- If you notice an air quality problem in your community, you can submit a complaint: pscleanair.gov/262/File-a-Complaint
- You can reach our team at EJ@pscleanair.gov



Questions

✦ Scan the QR Code or click the link in the chat to take the survey now



QR Code for the English
Language Survey



QR Code for surveys in
languages other than English



Next Steps

- ✦ Surveys Due May 27th
- ✦ Survey Results on KCIA Website End of June
- ✦ Air Monitoring Plan Phase 2
 - ✦ Determine monitor type and installation location at KCIA
 - ✦ Procure monitors and install
- ✦ Landscape Plan Phase 2
 - ✦ Develop conceptual plans and design for plantings
- ✦ Sign up for phase 2 working group



QR code to sign up for the
upcoming working groups

An aerial photograph of Boeing Field in Seattle, Washington. The runway and taxiway are prominent, leading towards a large mountain in the distance. The airport's terminal buildings, hangars, and parking lots are visible on either side. The text "Thank You" is overlaid in a large, light blue, sans-serif font across the center of the image.

Thank You

✦ Air Monitoring and Landscape Plan

✦ Phase 1 Presentation and Survey for Phase 2 Work



King County
International Airport
Boeing Field