

## KCIA Revenues 2022

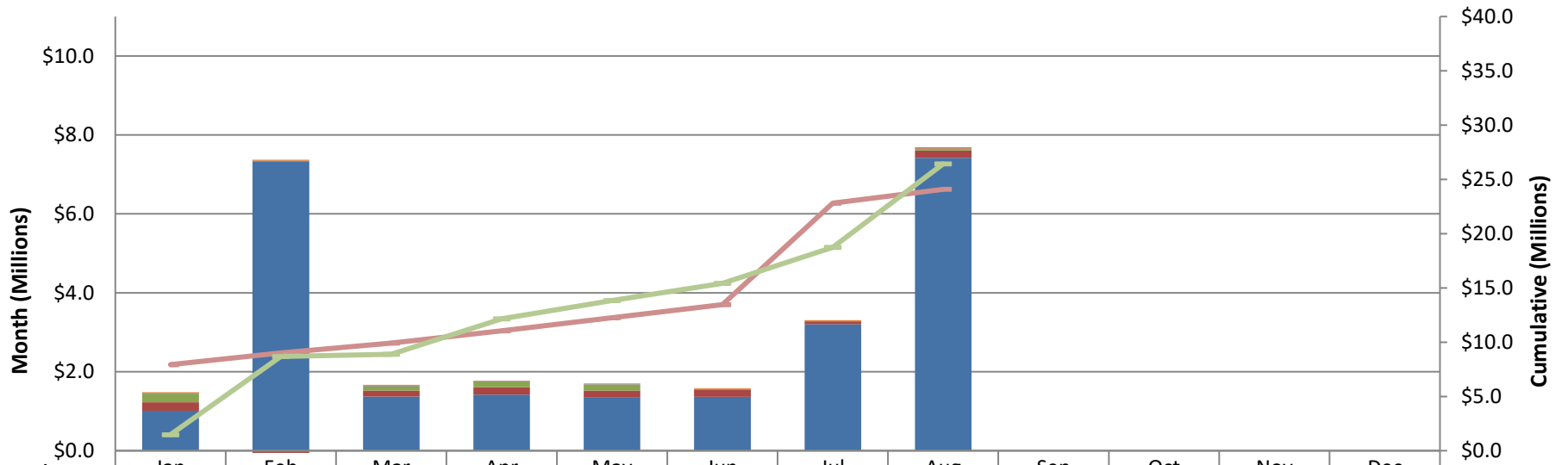


Table in Thousands

	Jan	Feb	Mar	Apr	May	Jun	Jul	Aug	Sep	Oct	Nov	Dec
Other	24	32	25	11	24	28	29	36				
Transient Parking												
Interagency Rent	11	11	11	11	11	11	11	11				
Landing fees	215	-88	114	145	146		2	34				
Fuel Fees	218	-71	147	185	176	174	58	192				
Lease	1,011	7,331	1,375	1,423	1,347	1,368	3,206	7,418				
Cumu Budget	7,931	9,002	9,915	11,038	12,249	13,453	22,820	24,082				
Cumu Total	1,479	8,695	8,888	12,144	13,848	15,429	18,736	26,427				

# KCIA Expenditures 2022

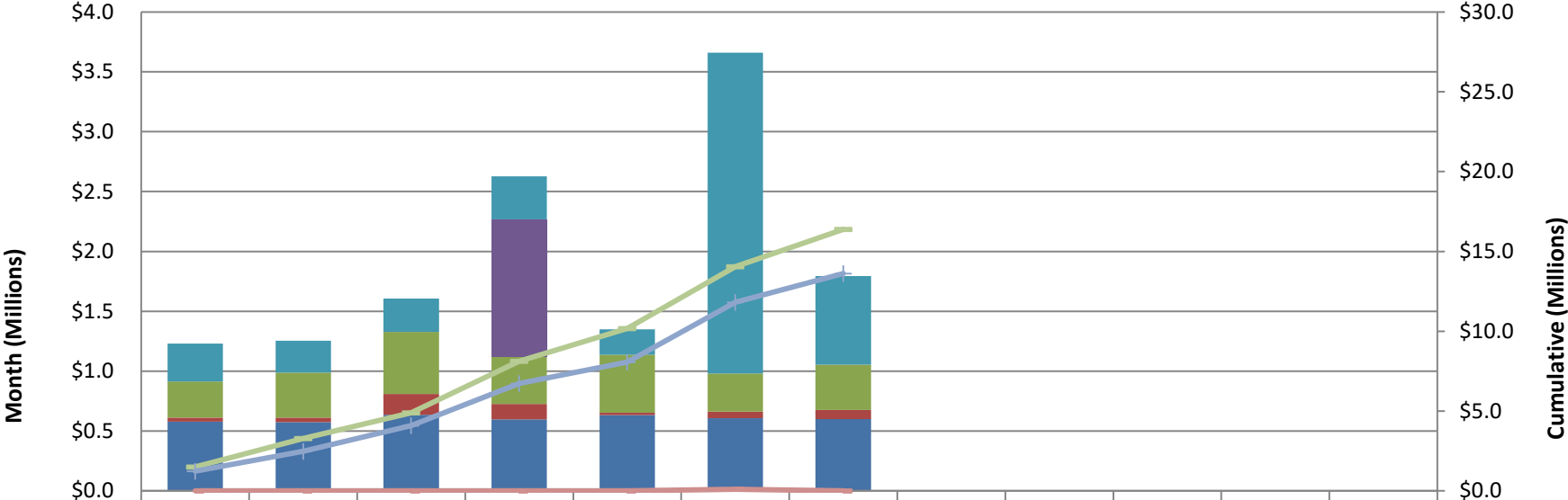
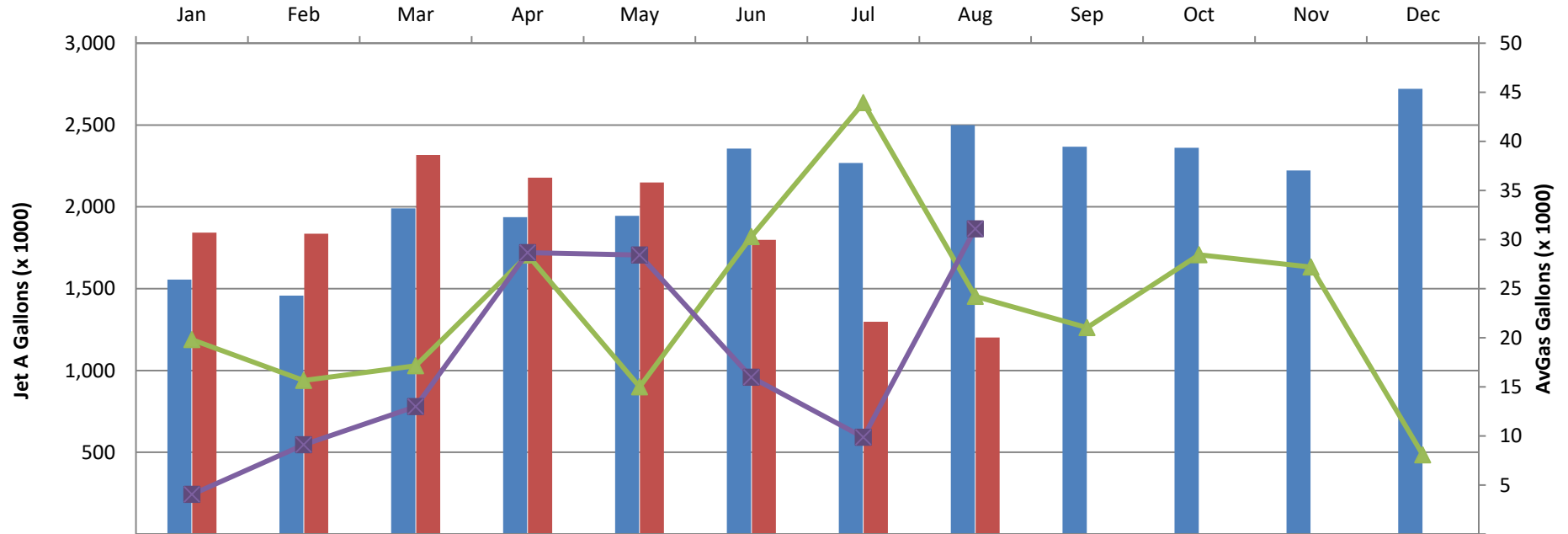


Table in Thousands

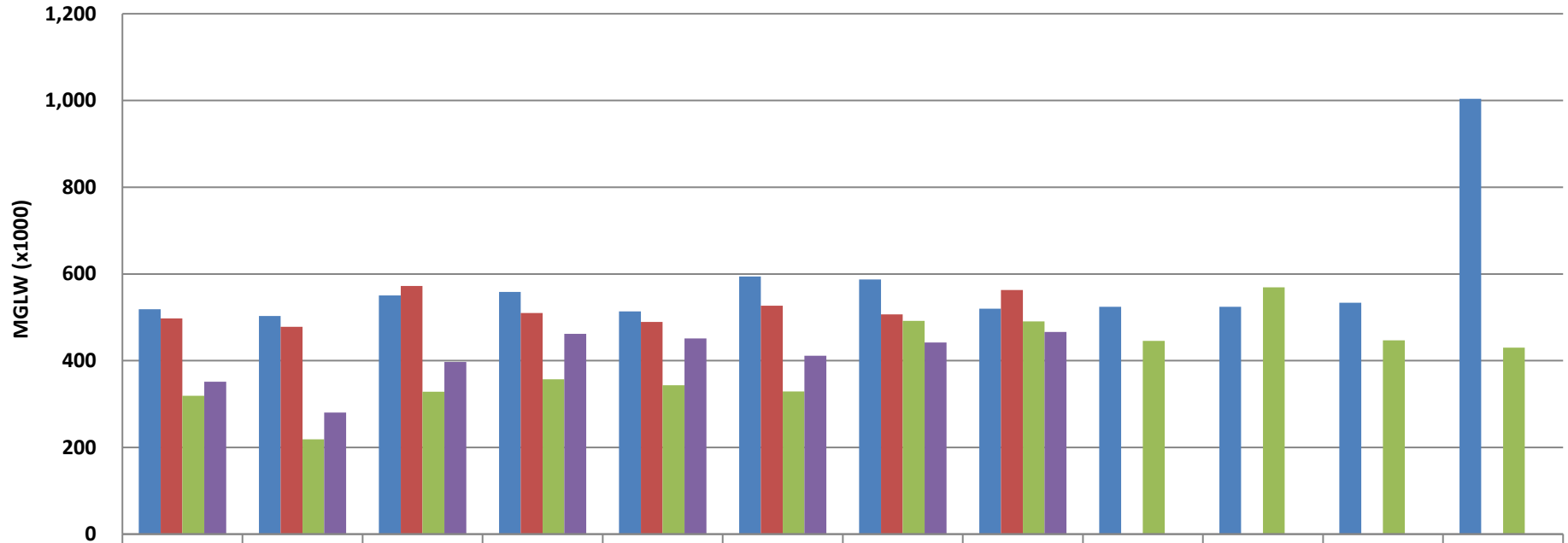
	Jan	Feb	Mar	Apr	May	Jun	Jul	Aug	Sep	Oct	Nov	Dec
Capital Outlays												
Intergovernmental	316	267	278	360	212	2,680	741					
Seattle SWM Fee				1,147								
Services	303	375	519	394	485	319	378					
Supplies	33	39	174	127	21	54	78					
Salaries/benefits	578	573	636	598	632	607	599					
Debt Service						94						
Cumu Budget	1,497	3,287	4,891	8,116	10,167	14,038	16,382					
Cumu Total	1,231	2,485	4,092	6,719	8,068	11,822	13,616					

## KCIA Fuel Volumes 2021-2022



	Jan	Feb	Mar	Apr	May	Jun	Jul	Aug	Sep	Oct	Nov	Dec
2021 Jet-A	1,555	1,458	1,991	1,937	1,945	2,355	2,268	2,500	2,367	2,361	2,222	2,721
2022 Jet-A	1,843	1,836	2,318	2,179	2,149	1,799	1,298	1,201				
2021 AvGas	20	16	17	28	15	30	44	24	21	28	27	8
2022 AvGas	4	9	13	29	28	16	10	31				

## Billable Landed Weight 2021-2022



	Jan	Feb	Mar	Apr	May	Jun	Jul	Aug	Sep	Oct	Nov	Dec
■ 2021 Cargo	51,846	50,312	55,063	55,876	51,365	59,396	58,752	51,956	52,434	52,447	53,333	100,371
■ 2022 Cargo	49,729	47,803	57,224	50,991	48,929	52,646	50,653	56,281				
■ 2021 Non-Cargo	31,930	21,839	32,838	35,699	34,322	32,868	49,186	49,071	44,581	56,937	44,697	43,019
■ 2022 Non-Cargo	35,118	28,062	39,706	46,182	45,115	41,150	44,177	46,612				