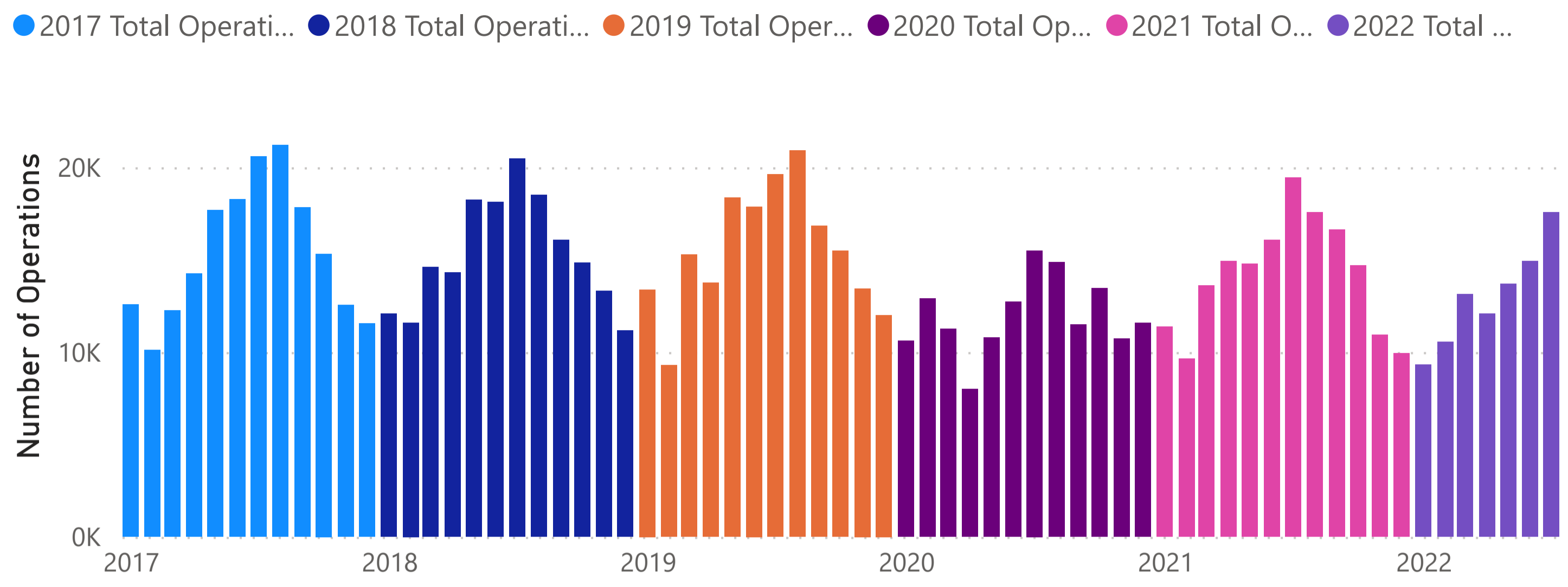


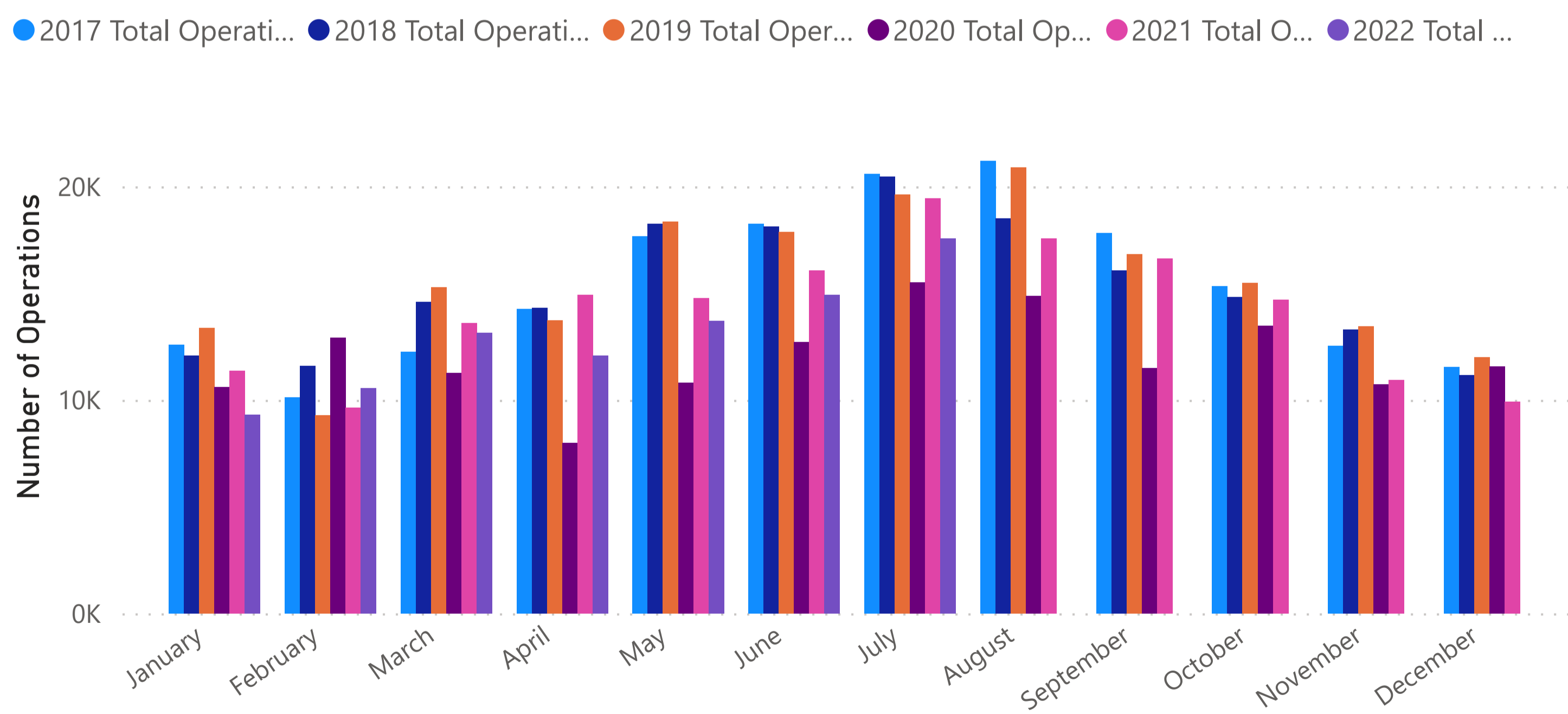
Total Flight Operations 2017 - Present



Total Flight Operations 2017 - Present

Month	2017 Total Operations	2018 Total Operations	2019 Total Operations	2020 Total Operations	2021 Total Operations	2022 Total Operations
January	12,579	12,071	13,382	10,614	11,362	9,309
February	10,113	11,591	9,287	12,908	9,635	10,556
March	12,256	14,591	15,280	11,254	13,612	13,142
April	14,254	14,303	13,740	7,996	14,925	12,067
May	17,678	18,242	18,365	10,797	14,774	13,700
June	18,264	18,133	17,876	12,715	16,072	14,919
July	20,593	20,474	19,629	15,497	19,449	17,567
August	21,196	18,506	20,903	14,869	17,575	
September	17,827	16,062	16,830	11,489	16,625	
October	15,322	14,828	15,486	13,467	14,686	
November	12,543	13,310	13,445	10,729	10,925	
December	11,557	11,157	12,005	11,581	9,929	
Total	184,182	183,268	186,228	143,916	169,569	91,260

Total Flight Operations Comparison

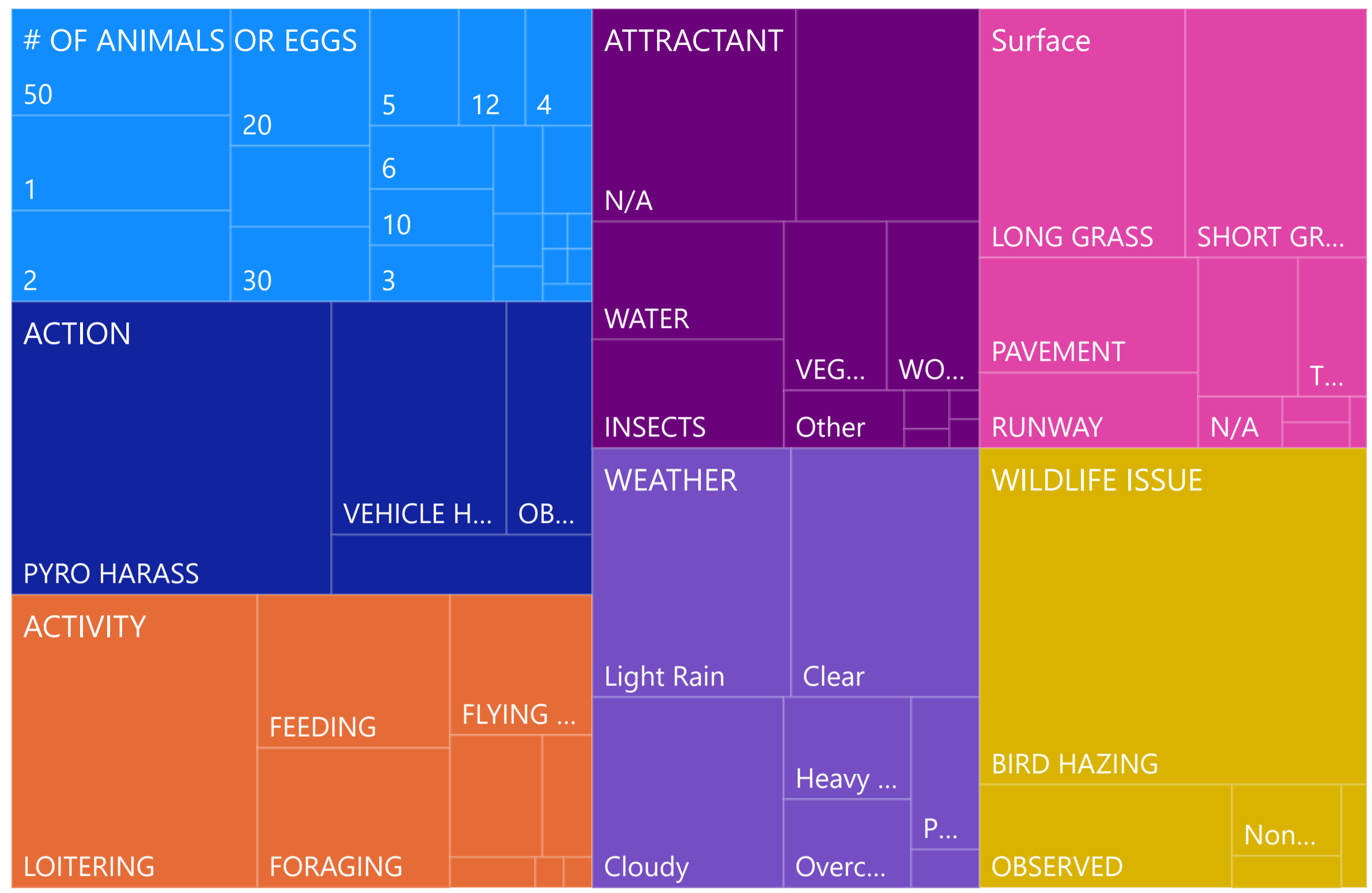


Year

Quarter

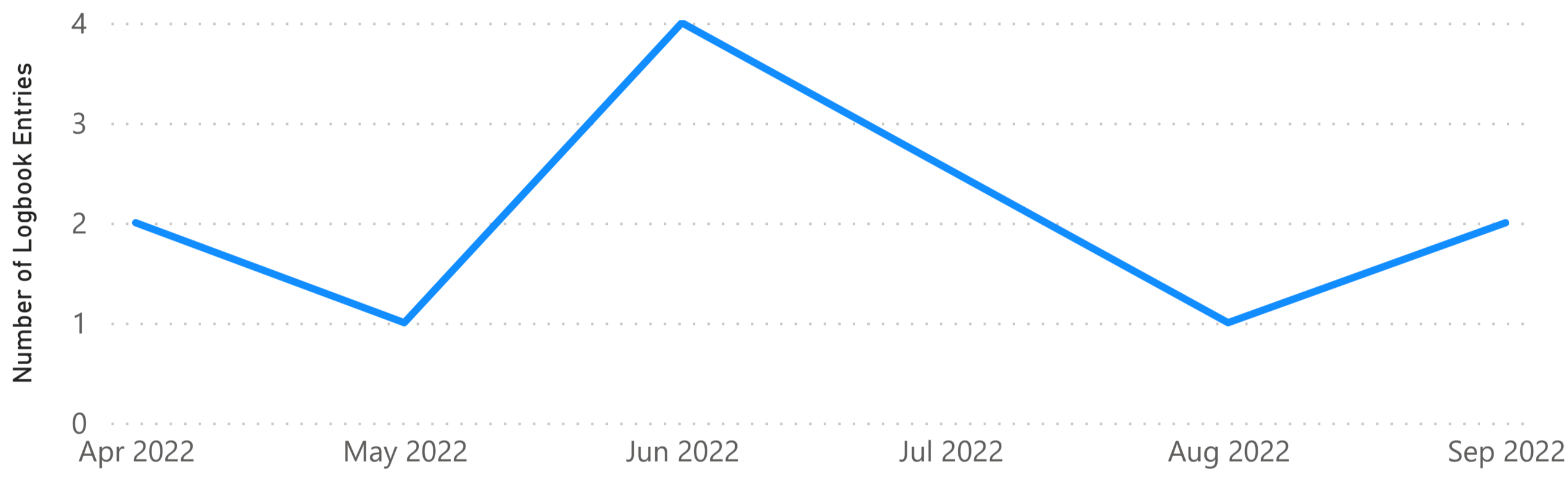
Month

Count of REQUESTID by CUSTFIELDNAME and CUSTFIELDVALUE



INITIATEDBY: All
CATEGORY: Wildlife Issue
CUSTFIELDNAME: Multiple selections
DATETIMEINIT: Last 6 Months
Count of REQUESTID: **196**
 3/9/2022 - 9/8/2022

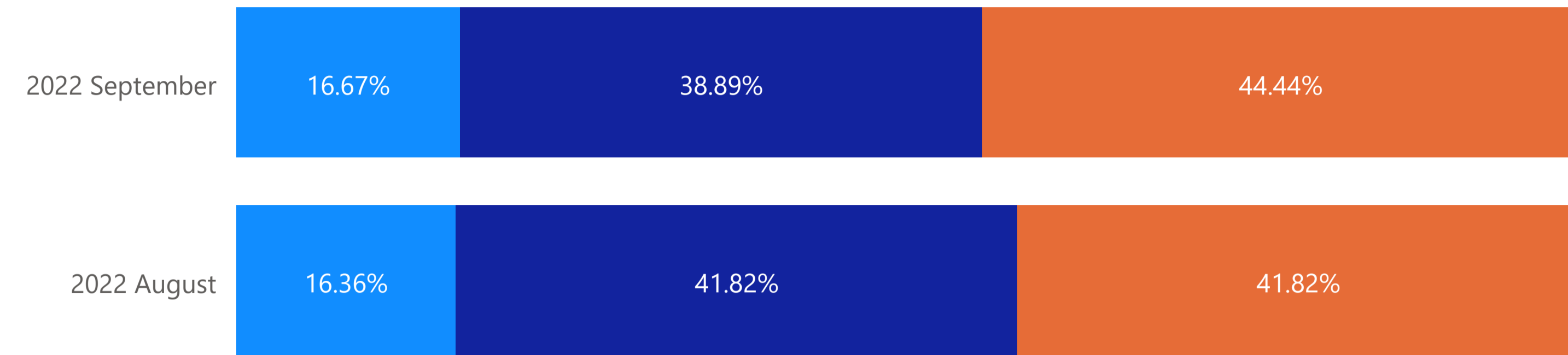
Number of Logbook Entries Created Over Time



REQUESTID	# OF ANIMALS OR EGGS	ACTION	ACTIVITY	ATTRACTANT	Surface	WEATHER	WILDLIFE ISSUE
8567						Light Rain	None observed
8564						Clear	None observed
8561							
8560							
8498	1	OBSERVED	LOITERING	N/A	PAVEMENT	Clear	OBSERVED
8463	200		FLYING PAST		TREE	Clear	OBSERVED
8398	30		FLYING LOCAL		LONG GRASS	Clear	OBSERVED
8394	22	PYRO HARASS	LOITERING	N/A	LONG GRASS	Clear	BIRD HAZING
8360	30	PYRO HARASS	LOITERING	Other	LONG GRASS	Clear	BIRD HAZING

Inspection Types by Month as a Percentage

Inspection Type ● Part 139 Continuous ● Part 139 Day ● Part 139 Night



INITIATEDDATE

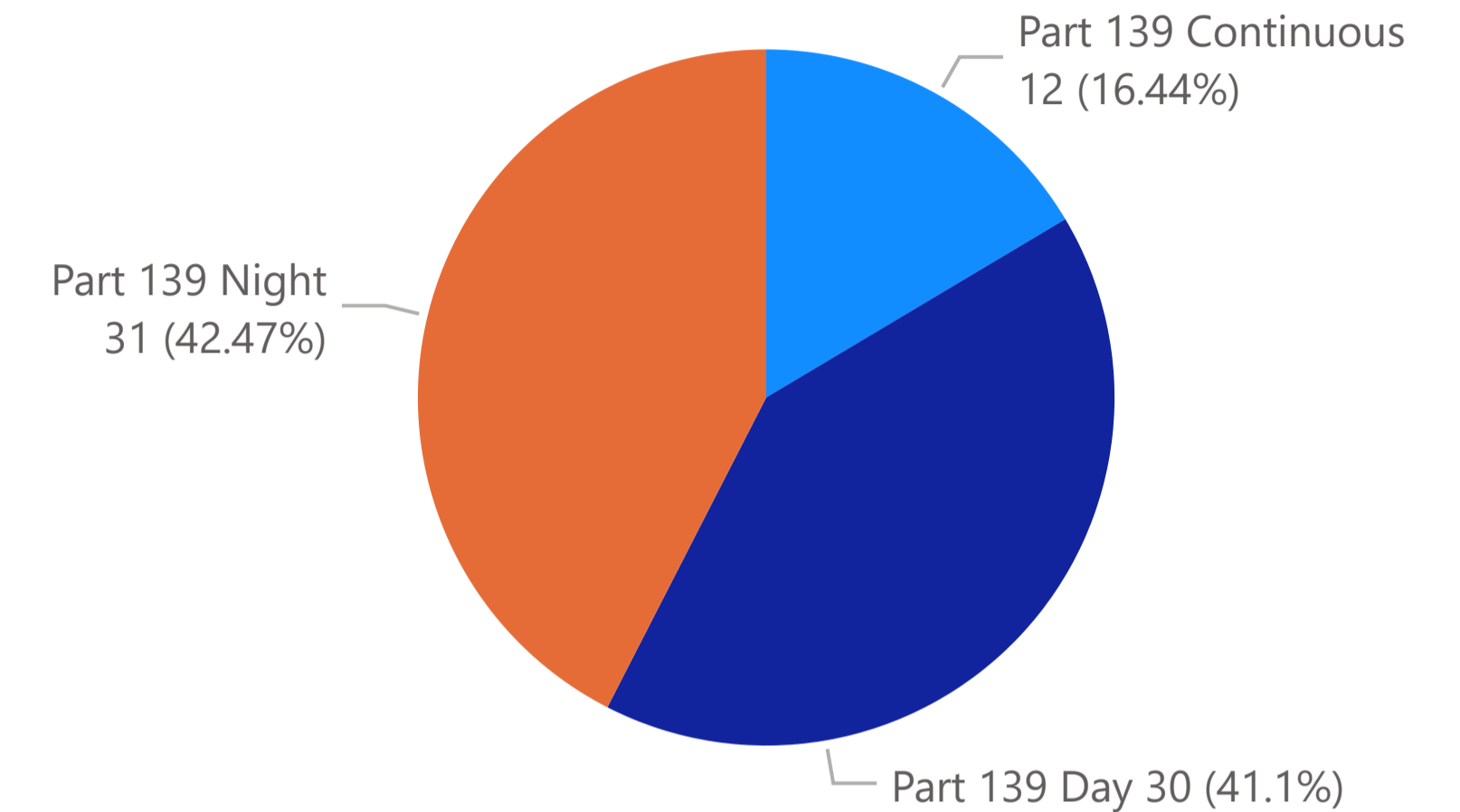
Last 1 Months

8/9/2022 - 9/8/2022

73

INSPECTIONID

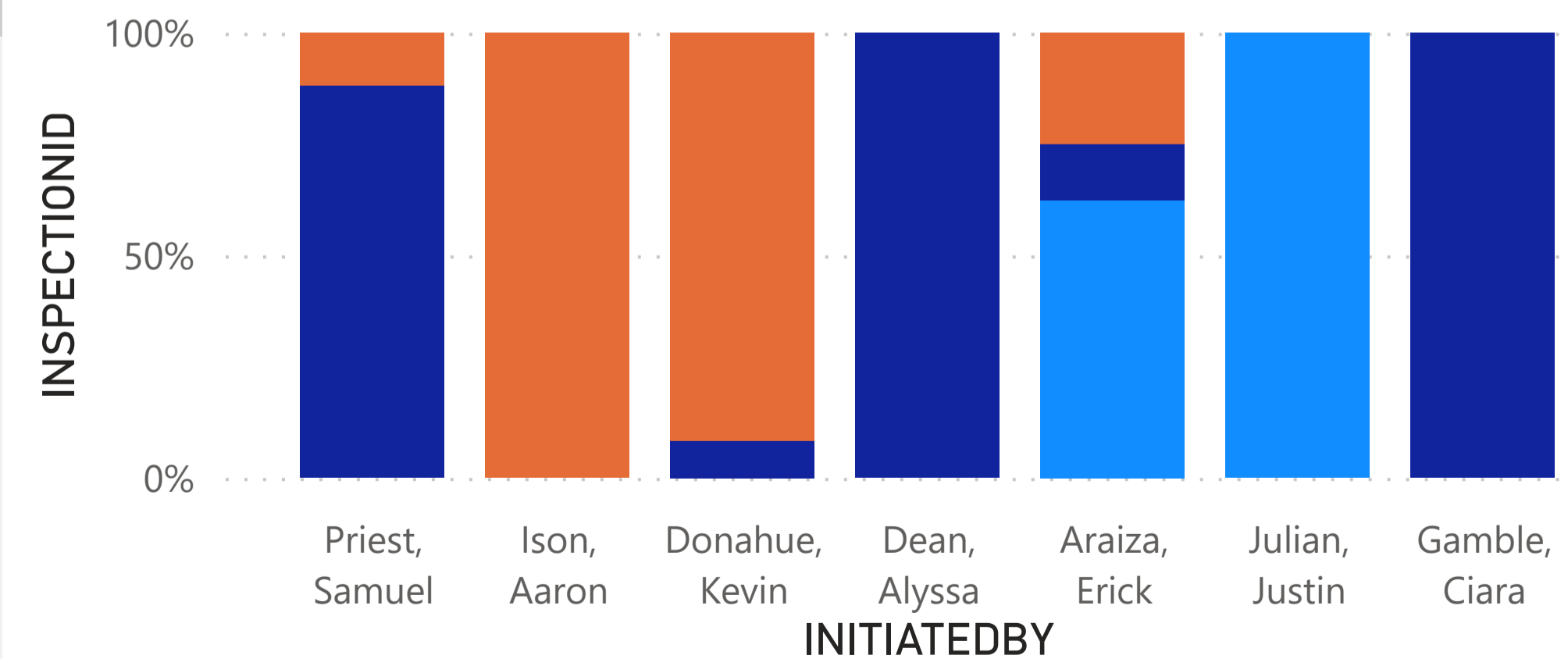
Part 139 Inspections by Type



INSPECTIONID	INITIATEDDATE	INSPTEMPLATENAME	INITIATEDBY	INSPECTEDBY	CLOSEDBY	STATUS
4459	09/07/2022	Part 139 Night	Ison, Aaron	Ison, Aaron	Ison, Aaron	CLOSED
4458	09/07/2022	Part 139 Day	Priest, Samuel	Priest, Samuel	Priest, Samuel	CLOSED
4457	09/06/2022	Part 139 Night	Donahue, Kevin	Donahue, Kevin	Donahue, Kevin	CLOSED
4456	09/06/2022	Part 139 Day	Priest, Samuel	Priest, Samuel	Priest, Samuel	CLOSED
4455	09/06/2022	Part 139 Continuous	Julian, Justin	Julian, Justin	Julian, Justin	CLOSED
4454	09/05/2022	Part 139 Night	Donahue, Kevin	Donahue, Kevin	Donahue, Kevin	CLOSED
4453	09/05/2022	Part 139 Day	Priest, Samuel	Priest, Samuel	Priest, Samuel	CLOSED
4452	09/05/2022	Part 139 Continuous	Julian, Justin	Julian, Justin	Julian, Justin	CLOSED
4451	09/04/2022	Part 139 Night	Donahue, Kevin	Donahue, Kevin	Donahue, Kevin	CLOSED
4450	09/04/2022	Part 139 Day	Priest, Samuel	Priest, Samuel	Priest, Samuel	CLOSED
4449	09/04/2022	Part 139 Continuous	Araiza, Erick	Araiza, Erick	Araiza, Erick	CLOSED

Inspection Types by Employee as a Percentage

Inspection Type ● Part 139 Continuous ● Part 139 Day ● Part 139 Night



Last 30 Days

Top-10 Locations (by Zip Code) - BFI
Total Complaints: 587

