

AFFORDABLE HOUSING & HOMELESSNESS

2019-2020 Council Budget Highlights



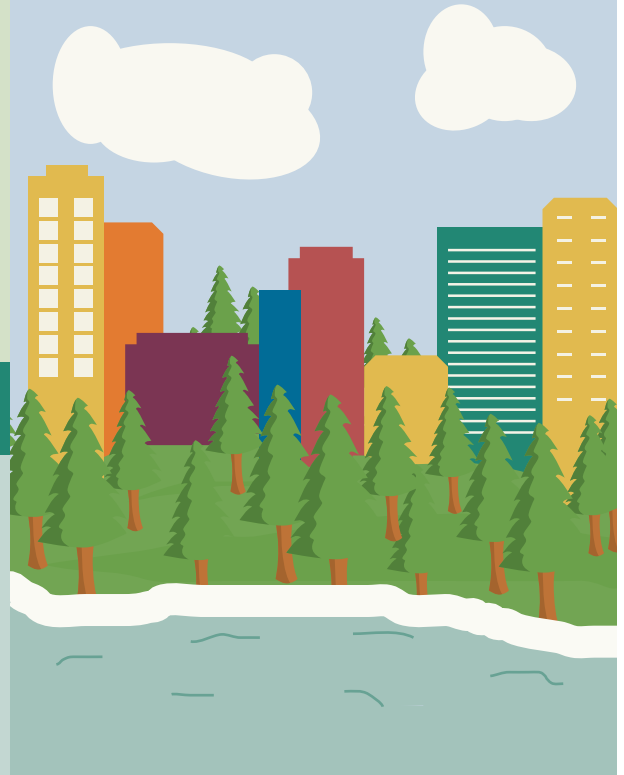
SHELTER FUNDING & REPORTING

Allocates specific funding for shelters:

- \$2M for Bellevue
- \$3M for Federal Way
- \$4M for Harborview Hall
- Snoqualmie Valley Shelter Services: \$200K
- Up to \$6M for West Wing Shelter in Seattle

Developing shelter at the King County Correctional Facility and Harborview Hall and the day center at 4th & Jefferson.

\$330 million
for thousands of new
units and shelter beds



REGIONAL AFFORDABLE HOUSING

Funds \$1.3M to support the Regional Affordable Housing Task Force efforts, as well as \$300K in housing collaboration efforts in South King County (\$150K – an increase from the Executive's proposed budget – and \$150K for other areas, including North King County).

BOND-SUPPORTED PRESERVATION & TRANSIT-ORIENTED DEVELOPMENT PROJECTS

Allocates \$100M in a new issuance of bonds to be backed by future lodging taxes for affordable, transit-oriented development (TOD) housing:

- \$30M for King County Housing Authority preservation projects outside Seattle, pending Council approval of a bond allocation plan;
- \$30M for competitively procured projects, pending Council approval of a bond allocation plan; and
- \$40M to specific affordable housing projects around King County.

Allocates \$390K for Home and Hope to continue work related to housing and homelessness.