

Eastside Rail Corridor Regional Advisory Council

Thursday, October 11, 2018

9:00 AM- 11:30 AM

Peter Kirk Room, Kirkland City Hall
123 Fifth Ave, Kirkland, WA 98033

- 9:00 **Welcome and Introductions** – RAC Chair/King County
Councilmember CM Claudia Balducci
- 9:10 **Branding Work Session** (Information and Direction Item)
Juliet D'Ambrosio, Project Lead, ICON
Amanda Young, ICON
- 10:00 **ERC Funding Commission Status and Preview** (Information and
Discussion Item)
Gene Duvernoy, ERC Funding Commission Co-Chair
- 10:50 **Integrating Art into the ERC: Redmond and Kirkland**
(Information and Direction Item)
Carolyn Hope, Park Planning and Cultural Services Manager,
City of Redmond
Ellen Miller-Wolfe, Economic Development Manager City of
Kirkland
- 11:15 **Member Progress and Success Updates** (Discussion)
- 11:25 **Public Comment**
- 11:30 **Next Steps and adjournment**

[Blank Page]

Eastside Rail Corridor Trail Funding Commission

Progress Update to Regional Advisory Council

Gene Duvernoy, Co-Chair

October 11, 2018



ERC Funding Commission



DISCUSSION OUTLINE

- 1. Scope of ERC Trail Funding Commission**
- 2. Commissioners and Project Team**
- 3. Draft Recommendations**
- 4. Next Steps**



SCOPE OF COMMISSION

1. Funding Source Options

Identify options for funding the projects through which the trail will be implemented, with a focus on private, non-governmental, and public-private partnership sources in the context of public funding opportunities. Also identify where different types of funding sources can be used to leverage other sources.



SCOPE OF COMMISSION (cont'd)

2. Actions to Fund

Identify projects that are the best candidates for current and future funding streams and best suited to leverage public and private funds. The Commission will also consider geographic distribution of projects when making recommendations to the RAC.

SCOPE OF COMMISSION (cont'd)

3. Building and Sustaining Support for ERC Corridor Development

Identify ways RAC members and supporters can build support for trail and corridor development, within the context of transit and utility uses, within their own constituencies and how to turn that support into an organized strategy to fund and sustain the trail and corridor in its entirety.



COMMISSION MEMBERSHIP

Gene Duvernoy, Forterra – Co-Chair
Greg Johnson, Wright Runstad & Co. – Co-Chair
Matt Cohen, Community
Bill Finkbeiner, Community
Stacy Graven, Meydenbauer, (Bellevue)
Blair Howe, Kidder Matthews
Steve Kramer, KG Properties (Bellevue)
Bob Moser, King County Parks Foundation
Dan Perrow, Kaiser Permanente (Bellevue)
Heather Sheffer, Boeing (Renton)
Greg Shelton, Physio Control (Redmond)
Edna Shim, Children's Hospital (Bellevue)
Kay Taylor, Evergreen Hospital (Kirkland)
Dave Tomson, SRM Development (Kirkland)
Rocale Timmons, Seco Development (Renton)
Taldi Walter, REI (Bellevue)
Dave Witt, Woodinville Chamber (Woodinville)



PROJECT TEAM

Jeff Aken, City of Redmond

Jenny Bailey, Parametrix

Emelie East, CBE Strategic

Joseph Inslee, King County Parks

Kari Page, City of Kirkland

David St. John, King County Department of Natural Resources and Parks

Jamie Strausz-Clark, PRR

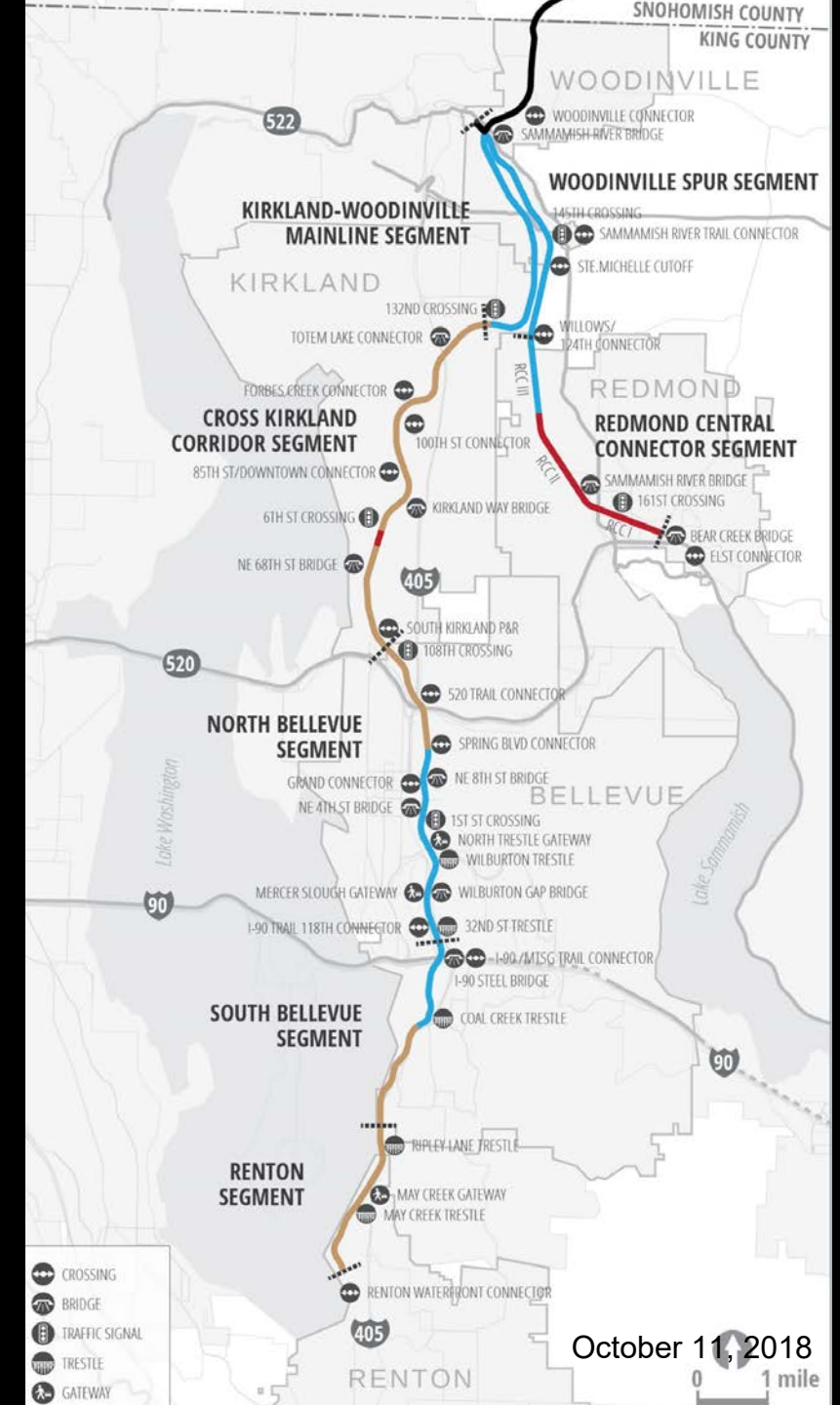
Curt Warber, King County Parks



ERC Funding Commission



ERC PROJECTS



DRAFT RECOMMENDATIONS

Three groupings of ERC projects

- Connect the Trail
- Build the Trail
- Enhance the Trail

Prioritize connectivity

ERC Funding Commission



DRAFT RECOMMENDATIONS (cont'd)

Private sector will play key role in accelerating implementation of ERC

- Support through partnership
- Support through policy
- Support through philanthropy



DRAFT RECOMMENDATIONS (cont'd)

Create entity to build and sustain support

- Independent
- Co-equal with RAC
- Offers whole ERC perspective
- Authority to facilitate partnerships and transactions with private sector
- Entrepreneurial
- Ability to advocate



ERC Funding Commission



NEXT STEPS

- Sub-groups meet November 5, 2018
 - Communications and marketing
 - Policies
 - Entity
- Recommendations finalized in January 2019



Scoping Document for the ERC Funding Commission
January 9, 2018
Final

Purpose of the Funding Commission:

The Commission will be convened by the Regional Advisory Council (RAC) to produce recommendations for funding the development of the Eastside Rail Corridor (ERC). This work will advance the existing multiple-use vision for the ERC. The Funding Commission will primarily be focused on developing a comprehensive strategy to realize an end-to-end trail within the transportation corridor, in the context of transit and utility uses that are fundamental elements of the vision. This work will be rooted in an understanding of the broader transportation corridor vision in the context of transit, utilities and trail development. These recommendations will address:

1. **Funding Source Options:** Identify options for funding the projects through which the trail will be implemented, with a focus on private, non-governmental, and public-private partnership sources in the context of public funding opportunities. Also identify where different types of sources can be used to leverage other sources.
2. **Recommending Actions to Fund:** Identify projects that are the best candidates for current and future funding streams and best suited to leverage public and private funds. The commission will also consider geographic distribution of projects when making its recommendations to the RAC.
3. **Building and Sustaining Support for ERC Corridor Development:** Identify ways RAC members and supporters can build support for trail and corridor development, within the context of transit and utility uses, within their own constituencies and how to turn that support into an organized strategy to fund and sustain the trail and corridor in its entirety.

Funding Commission Project Implementation Structure:

Project oversight will be provided by the RAC. The RAC will approve the scope prior to convening the Commission. RAC members may participate as advisors and subject matter experts in each Commission meeting. RAC meetings, timely scheduled, will be a key venue for gaining direction and information sharing as the commission's work progresses. The Commission will present its final recommendations to the RAC.

The Commission membership will be comprised of community, business and non-government organization leaders. Commission members will be confirmed by the RAC.

King County DNRP will hire a third-party facilitator to coordinate and support the Commission's work. The facilitator will organize and implement meetings of the Commission and support necessary timely coordination between the Commission and the RAC (e.g., for providing briefings and gaining direction).

The ERC RAC Principals Staff Team¹ (PST) will support project implementation through developing ideas and providing information, helping manage day-to-day implementation issues to ensure progress and alignment with RAC direction, and collaborating with the facilitator as part of the project team.

Anticipated Timeline and Level of Effort:

Commission members will be confirmed by the first quarter of 2018 by the RAC. The Commission will be convened in early 2018 and its work will be complete by the third quarter of 2018.

Preliminary/Illustrative Commission Scope:

The preliminary scope, serving as a tool to advance consideration of actual tasks and support work planning for the Commission, includes the following main activities. The RAC will approve the final scope.

4Q2017/1Q 2018:

- The RAC approves the final project scope
- King County procures the services of a third-party facilitator, with appropriate RAC involvement
- The RAC collectively identifies their desired Commission members (entities and specific people)
- The RAC assigns specific members to contact and confirm Commission members
- RAC members secure the necessary supporting resources for implementing the project

By 3Q2018:

- Meeting 1: ERC field visit; initial convening for general orientation; discussion of the goals for development of the ERC within the multiple-use vision. (Lead by PST or RAC)

[BETWEEN MEETING WORK BY MEMBERS AND STAFF]

¹ The ERC Regional Advisory Council Principals Staff Team (PST) is the group of senior staff from RAC member entities that provides support to the RAC as it advances its coordinated efforts to achieve the RAC vision.

- Meeting 2: Review of key projects and opportunities within the corridor by King County, Redmond, and Kirkland; consideration of adjacent relevant development activities (scope and timeline) by ERC owners, neighboring jurisdictions (trails and neighborhood (re)development), and private interests (i.e., large employers, developers, ...) (Lead by PST)

[BETWEEN MEETING WORK BY MEMBERS AND STAFF]

- Meeting 3: Discuss funding mechanisms relevant to the corridor and their anticipated application/implementation schedules; consider use of previously unaccessed funding mechanisms or develop new private/non-governmental funding mechanisms. (Lead by Facilitator)

[BETWEEN MEETING WORK BY MEMBERS AND STAFF]

- Meeting 4: Identify high-level project priorities and rationale within the corridor and potential private & non-governmental funding mechanisms, including project coordination and synergies between public and private development. Draft proposed high-level implementation plan for the funding strategy. (Lead by Facilitator)

[BETWEEN MEETING WORK BY MEMBERS AND STAFF]

- Meeting 5: Refine the implementation plan for the funding strategy, including 1) the timeline, key roles and responsibilities, 2) initial/foundational commitments and support necessary to advance the strategy and 3) how to get those commitments and support. (Lead by Facilitator)

[BETWEEN MEETING WORK BY MEMBERS AND STAFF]

- Meeting 6: Finalize recommended funding strategy and implementation plan for submittal to RAC. (Lead by Facilitator)

[IMPLEMENTATION OF FUNDING STRATEGY]

Staffing and Support:

The Commission's work will be coordinated and supported by a third-party facilitator hired by King County. Development and preparation of information supporting the Commission's work will be addressed primarily by staff from the respective ERC owner entities and staff that participate in the PST.

[Blank Page]

Integrating Art into the Redmond Central Connector

Eastside Rail Corridor Regional
Advisory Council Meeting
October 11, 2018



More than a trail...

TRAIL

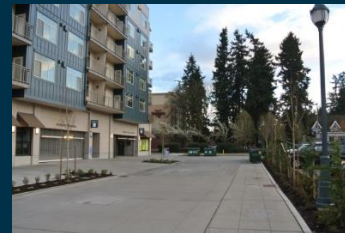
+ PARK

+ ART

+ TRANSIT

+ UTILITIES

+ ROADS



REDMOND CENTRAL CONNECTOR

Art Master Plan

Art Opportunities:

- Design Principles
- Locations
- Site-specific and integrated
- Permanent and Temporary
- Curated



**Make it Redmond:
Past, Present &
Future**



**Not Just a Place with
Art, a Place that Is Art**



Make it Magnetic



Connect the Community

Design Principles



Catalyst for Commerce



Capture the Sky



Capture the Weather



Capture the Night

Location & Scale

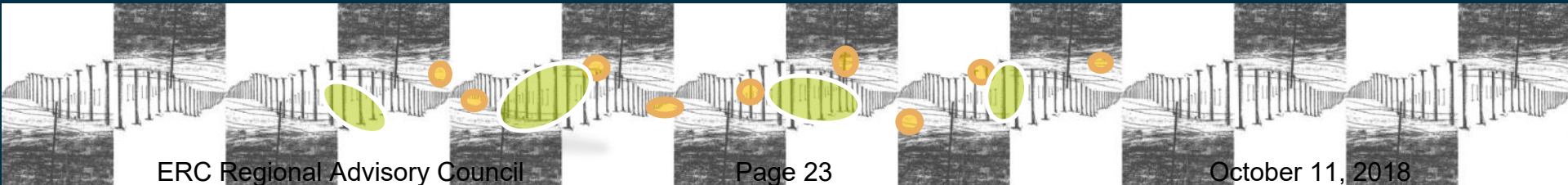
Landings



Islands & Eddies



Ties



Signals

- Site Specific
- Integrated
- Curated
- Permanent



Redmond's Erratic

A photograph of a young child in a blue hooded jacket standing next to a large, translucent, yellow-green structure that resembles a giant slide or a piece of art. The structure is set against a background of a brick wall. The child is looking down at the structure, which has a smooth, curved surface. The overall scene is brightly lit, with the yellow-green color of the structure being the most prominent feature.

- Site Specific
- Integrated
- Curated
- Permanent

Sky Painting

- Site Specific
- Integrated
- Curated
- Temporary

Integrated Art & Landscape Design

An aerial photograph of a modern park and urban intersection. The park features large green lawns divided by a network of light-colored, geometric concrete paths. Three people are walking along one of these paths. The park is bordered by a road with several cars, including a white SUV and a black sedan. In the bottom left corner, there is a large, complex metal structure, possibly a piece of art or a utility installation. The overall design is clean and contemporary.

Mixed Messages

Site Specific | Integrated | Curated | Temporary



Artist: Sidecar Collective

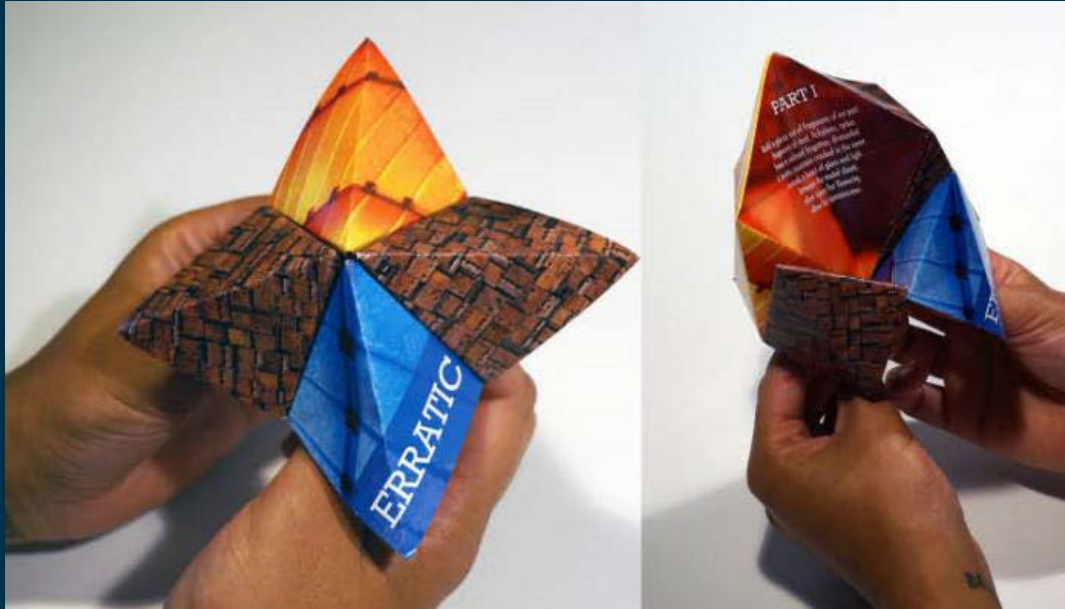
Poetry: Shin Yu Pi

ERC Regional Advisory Council

Page 28

October 11, 2018

Catalyst for Creativity





Platform for Art | Economic Vitality | Destination | Build Community

Regional Advisory Council

by

October 11, 2018



City of Redmond
WASHINGTON

Carolyn Hope
Park Planning & Cultural
Arts Manager
425-556-2313
cjhope@redmond.gov

[Blank Page]

Eastside Rail Corridor
Regional Advisory Committee

October 11, 2018

Integrating Art into the ERC

**Information on Kirkland's Art
Integration Plan for the ERC**

Can be found at

<https://www.kirklandwa.gov/Assets/CMO/CMO+PDFs/Art+Integration+Plan+for+the+CKC.pdf>

[Blank Page]

EASTSIDE RAIL CORRIDOR REGIONAL ADVISORY COUNCIL

MEETING SUMMARY

April 5, 2018 – 9:00 AM

Bellevue Botanical Garden

Advisory Council Members Present: Claudia Balducci, King County Councilmember (Chair); Angela Birney, Redmond City Councilmember (representing John Marchione, Redmond Mayor); Reagan Dunn, King County Councilmember; Kathy Lambert, King County Councilmember; John Stokes, Bellevue City Councilmember; Tom Teigen, Parks Director, Snohomish County; Blake Trask, Eastside Greenway Alliance; Christie True, Director, King County Department of Natural Resources and Parks (representing County Executive Dow Constantine); Bernard van de Kamp, Sound Transit (representing Peter Rogoff, CEO) and Amy Walen, Kirkland Mayor.

Welcome and Introductions

Chair Claudia Balducci called the meeting to order at 9:05 a.m., welcomed all in attendance and asked the Regional Advisory Council (RAC) members to introduce themselves.

Chair Balducci noted that the RAC meetings are open to the public and that it would be beneficial to the administrative staff if the meetings were recorded. She asked members to speak up if they had any issues with that. There were none raised.

Fiber Feasibility Update

Brenda Cooper, Chief Information Officer, City of Kirkland, and Darryl Hunt, Project Manager, King County Department of Information Technology; provided information regarding efforts to explore the addition of communications infrastructure to the corridor. A group of Eastside Rail Corridor (ERC) partners have been meeting for about a year to address fiber feasibility. Last spring a request for proposal (RFP) was released to find a vendor to conduct a feasibility study.

Most broadband is in some way dependent on fiber-optic cables. The availability of high-speed broadband plays an important role in future economic prosperity and equality, and enables the use of smart technology. Installing a fiber build will be expensive and take a fair amount of time, though installing while most of the trail is still “interim” will be more cost effective.

The scope of the feasibility study will include the creation of a conceptual fiber route along the length of the corridor and explore business models for accomplishing the build. Deliverables will include technical and capacity requirements, construction estimates, a fiber plan, a list of strategic points of presence, a business case analysis, possible business models and options and an analysis of construction funding. These findings will factor in the sensitive areas along the corridor as well as consider options to connect to existing infrastructure or install new infrastructure.

The cost of the feasibility study is estimated at \$50,000 - \$100,000 or more. Several parties have committed to help fund the study; Kirkland is assisting with procurement and King County is providing project management.

Ongoing and future tasks (and estimated timeframes) include continued talks with potential partners, evaluation of the RFP responses and vendor selection (2nd quarter 2018), completion of the feasibility study (3rd quarter 2018), briefing PST and RAC as desired, presentation of final report recommendations to the RAC and completion of the fiber buildout.

It was noted that steps are being taken with current projects in progress to enable the inclusion of fiber.

Discussion ensued regarding parties that have been contacted, the role of the Community Connections Consortium and Pacific Northwest Gigapop. The purpose of the project is to both lay infrastructure and future trail use, addressing revenue generation and the possible use of any savings to help build out the trail. The latter was noted as a policy question that would need to be addressed by the RAC. Snohomish County is currently looking at fiber replacement options.

Branding

Curt Warber who recently joined the King County Department of Natural Resources and Parks as a project manager replacing Erica Jacobs, addressed the benefits of the ERC and Regional Trails System (RTS) working together on branding efforts. Both groups had previously looked into branding individually, and now have the opportunity to pool their knowledge and resources on branding efforts while utilizing a single consultant.

Sujata Goel, a special projects coordinator with the King County Department of Natural Resources and Parks, and member of the RTS, noted that discussions with residents in different neighborhoods revealed that they are familiar with trails in their areas, but not with how they may connect to other trails. Current efforts include work with the National Rails to Trails Conservancy. A diagram showing a portion of the Philadelphia trail circuit was provided as an example of how the interconnection of our various trails could be depicted. Examples of branding efforts around the country were also provided. From a regional trails perspective, they are looking at focus groups and diversity within those groups.

An understanding of the values of residents and tying those to what is being provided should be taken into account when considering logo options. The goal is to enable residents to identify the trail they are on.

Anticipated outcomes are research regarding the value of the corridor and network, name and logo options for the corridor and network, and a brand identity to help tell our story. Connectivity values include seeing the entire 300+ mile system as interconnected, understanding where the network will enable you to go, identifying the trail/corridor, and aligning network, trail, segment, jurisdiction and non-profit partners.

The RFP is close to finalization.

Discussion ensued regarding the use of GPS, data sharing as a topic at the RTS's October summit, the inclusion of other counties, corporate sponsorship opportunities and having a name that evokes regional recognition.

Funding Commission

Jamie Strausz-Clark of PRR addressed progress on work to create a funding commission and provided a draft Charter. Seventeen of the 23 individuals approached to participate on the funding commission have accepted. These 17 provide a good geographical representation. One-on-one meetings with these potential participants are currently underway, with seven complete. Everyone seems to have a good understanding of the role of the funding commission, know that they will not be a part of the design process, have a strong interest in the timeline and want their participation to be meaningful and appreciated.

The hope is to affirm the draft charter at the first meeting on April 30th. Prior to this first meeting there will be optional narrated tours of portions of the corridor. Future meetings are anticipated for May (this may need to be rescheduled), June, July, September and November.

Further discussion addressed using a letterhead with all of the members' logos on it, and using terms such as corridor and interim trail rather than just trail to emphasize the multi-use function of the corridor.

Member Progress and Success Updates

Eastside Greenway Alliance (EGA)

- Enjoyed a ride on the Kirkland to Bellevue segment of the ERC.
- Vicky Clarke will be transitioning out of the EGA.

City of Kirkland

- Approximately 18,000 people have use the Kirkland corridor segment each month.
- Received \$2.5 million in State funding towards the pedestrian crossing at 124th.

Snohomish County

- Working towards 100% completion of design and engineering. Anticipate being ready to go by 2020. Next seven months will be very important. Planning it as a multi-use corridor. There are presently active trains using the rails.

City of Bellevue

- There is now a trail connection at the north and south ends of the city.
- Groundbreaking for the Sound Transit Operations and Maintenance Satellite Facility (OMSF) was held yesterday.
- Looking at how to implement the Grand Connection.
- Noted that REI has been a fantastic partner.

City of Redmond

- Working with Sound Transit on project requirements for the downtown Redmond link which will share the corridor with the Redmond Central Connector.
- A trail connection has been proposed between the East Lake Sammamish trail and the Redmond Central Connector trail that is planned to be built by Sound Transit as part of the Downtown Redmond Link Extension.
- The city is looking for funding for Phase III, final phase, of the Redmond Central Connector.

- Grant funding has been applied for and the State is providing some funding.
- The downtown park will be opening this September, it will be a block off the RCC.

Sound Transit

- Continues to work with Corridor partners.
- A temporary trail will be established near the OMSF. Hope to have a formal opening next month.
- A future project from South Kirkland to Issaquah will use some of the Corridor.
- The East Lake extension to Redmond is getting ready to go out to bid. The connection to the East Lake Sammamish Trail is a big part of the project - currently working with the City.
- East Lake construction is on schedule.

King County

- Welcomed Curt Warber to the Department of Natural Resources and Parks and the ERC.
- Commended Erica Jacobs for the work she has done on behalf of the ERC.
- There will be an official opening in May for each section of the interim trail.
- Doing a great deal of design work – particularly in the area of the Wilburton segment.
- Working on plans for busy crossings in Woodinville.
- Working hard to meet all the commitments in our agreement with WSDOT.
- The TIGER grant that we submitted did not get funded. Projects across the board like ours received no funding. Another opportunity may be coming up with proposals due in August.

Public comment

The following attendees offered public comment:

Lisa McConnel – suggested building a pedestrian bridge using 3-dimensional printers and noted that the actual building of the bridge could be an event in itself. She provided a handout with photos and links to the web pages of two bridges created this way. She also suggested eliminating the word “Rail” from Eastside Rail Corridor.

John Kearnes – commented on the reference to an excursion train at the previous meeting and expressed concern that it is not a feasible plan as he believes the easement was given to another railway.

Nathan Proudfoot – Noted that Eastside Community Rail, which has been defunct for about two years, currently holds the easement. His rail company will be conducting some rail replacement in Woodinville this summer.

Next steps and adjournment

The next meeting is scheduled for Thursday, July 12, 2018.

The meeting adjourned at 10:44 a.m.