

WHEN I TALK TO PATIENTS, MANY DON'T REALIZE THAT IT'S UNSAFE TO KEEP UNUSED MEDICATIONS AROUND THE HOME. KIDS MIGHT MISTAKE IT FOR CANDY. OTHERS MAY GET INTO IT WITHOUT YOUR KNOWLEDGE.



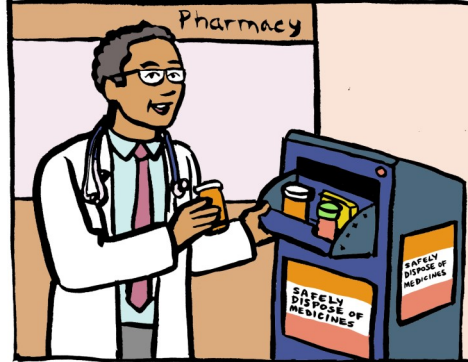
IF YOU OR YOUR CHILD GETS A PRESCRIPTION FOR PAIN TREATMENT, KEEP IT IN A SECURE PLACE. YOU CAN GET A LOCK-BOX AT A PHARMACY OR FROM AN ONLINE RETAILER.



YOU OR YOUR CHILD MIGHT BE ABLE TO MANAGE PAIN WITHOUT USING ALL THE MEDICATION. BUT HANGING ON TO UNUSED MEDS CAN BE DANGEROUS.



I TELL ALL MY PATIENTS ABOUT SECURE MEDICINE RETURN. IT'S FREE, AND AVAILABLE AT MANY LOCATIONS IN KING COUNTY.



DON'T HANG ON TO MEDS

Find a free medicine return drop-box near you:

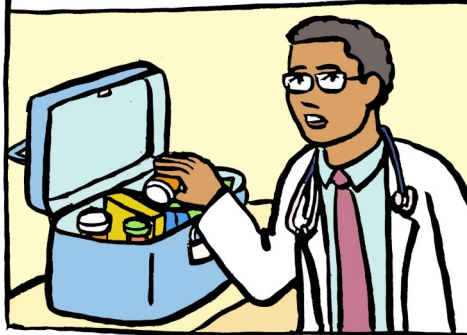
www.MedicineReturn.org

or text MEDS to 667873

WHEN I TALK TO PATIENTS, MANY DON'T REALIZE THAT IT'S UNSAFE TO KEEP UNUSED MEDICATIONS AROUND THE HOME. KIDS MIGHT MISTAKE IT FOR CANDY. OTHERS MAY GET INTO IT WITHOUT YOUR KNOWLEDGE.



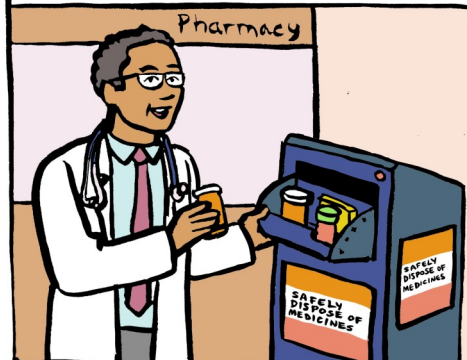
IF YOU OR YOUR CHILD GETS A PRESCRIPTION FOR PAIN TREATMENT, KEEP IT IN A SECURE PLACE. YOU CAN GET A LOCK-BOX AT A PHARMACY OR FROM AN ONLINE RETAILER.



YOU OR YOUR CHILD MIGHT BE ABLE TO MANAGE PAIN WITHOUT USING ALL THE MEDICATION. BUT HANGING ON TO UNUSED MEDS CAN BE DANGEROUS.



I TELL ALL MY PATIENTS ABOUT SECURE MEDICINE RETURN. IT'S FREE, AND AVAILABLE AT MANY LOCATIONS IN KING COUNTY.



DON'T HANG ON TO MEDS

Find a free medicine return drop-box near you:

www.MedicineReturn.org

or text MEDS to 667873

HELP KEEP OUR KIDS, FAMILIES AND COMMUNITIES SAFE

DON'T HANG ON TO MEDS

King County residents can safely get rid of medicines they no longer need by taking them to a drop-box. There are over 100 locations in King County at pharmacies, clinics, hospitals and law enforcement offices!

Find a free drop-box near you at www.MedicineReturn.org
or text MEDS to 667873



Secure Medicine Return
King County



King County

HELP KEEP OUR KIDS, FAMILIES AND COMMUNITIES SAFE

DON'T HANG ON TO MEDS

King County residents can safely get rid of medicines they no longer need by taking them to a drop-box. There are over 100 locations in King County at pharmacies, clinics, hospitals and law enforcement offices!

Find a free drop-box near you at www.MedicineReturn.org
or text MEDS to 667873



Secure Medicine Return
King County



King County