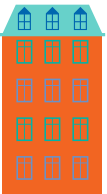
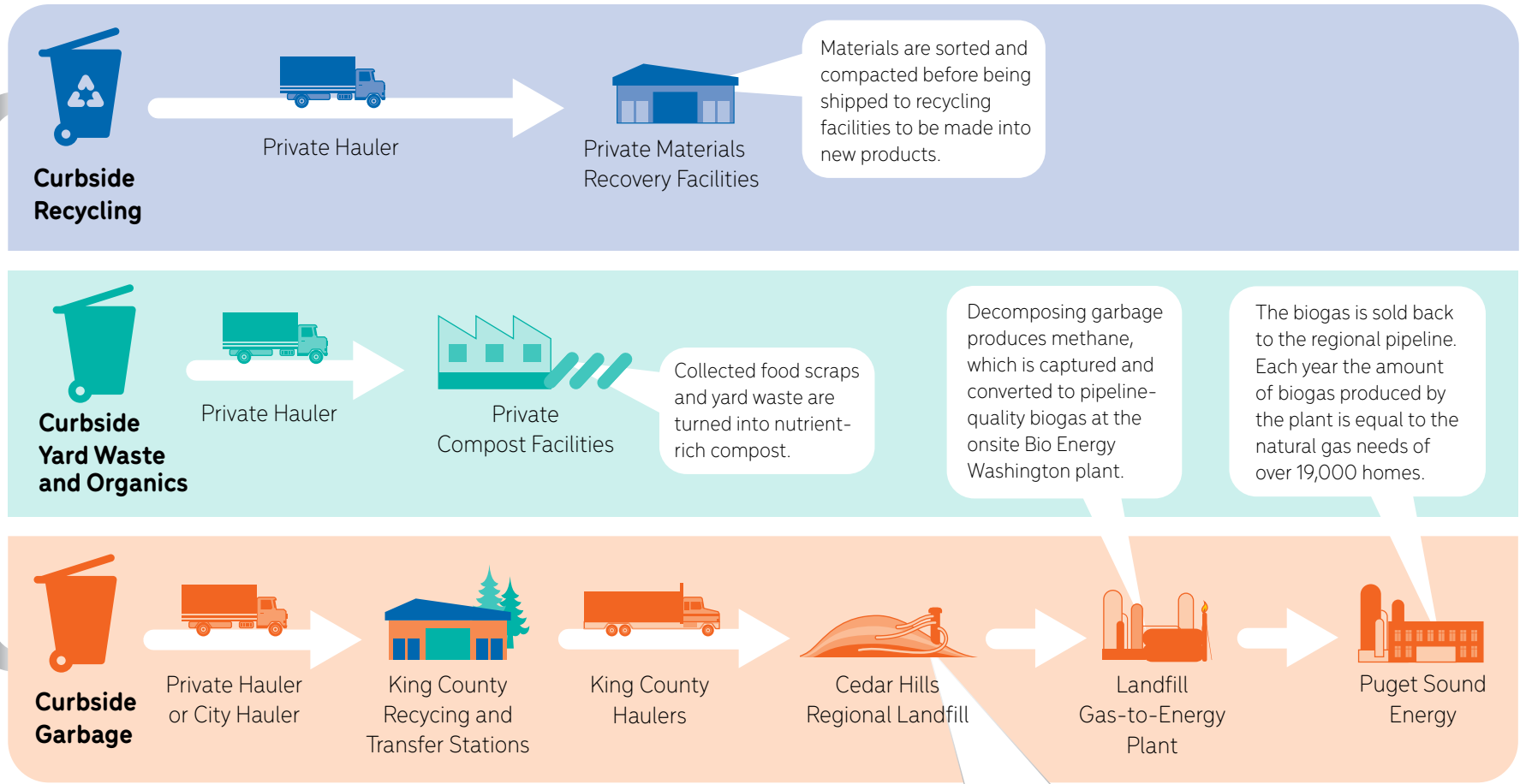


Where Does My Waste Go?

The path of recycling, yard waste and garbage once picked-up from your home.



Houses,
 Apartments
 and Condos



- **Since 1965:** the landfill has provided for the disposal of the county's garbage
- **Size:** 920 acres
- **Location:** Maple Valley area, 20 miles southeast of Seattle
- **Daily Garbage Received:** 2,550 tons from 1.5 million people across 37 cities, except Seattle and Milton
- **Tons Disposed in 2020:** 869,150 tons
- **Disposed Material:** 70% of the material sent to Cedar Hills could have been reused, recycled, or composted
- **Wildlife:** reclaimed areas of the landfill are home to black-tailed deer, elk, coyotes, and other wildlife

Alternate Formats Available
 206-477-4466, TTY Relay: 711