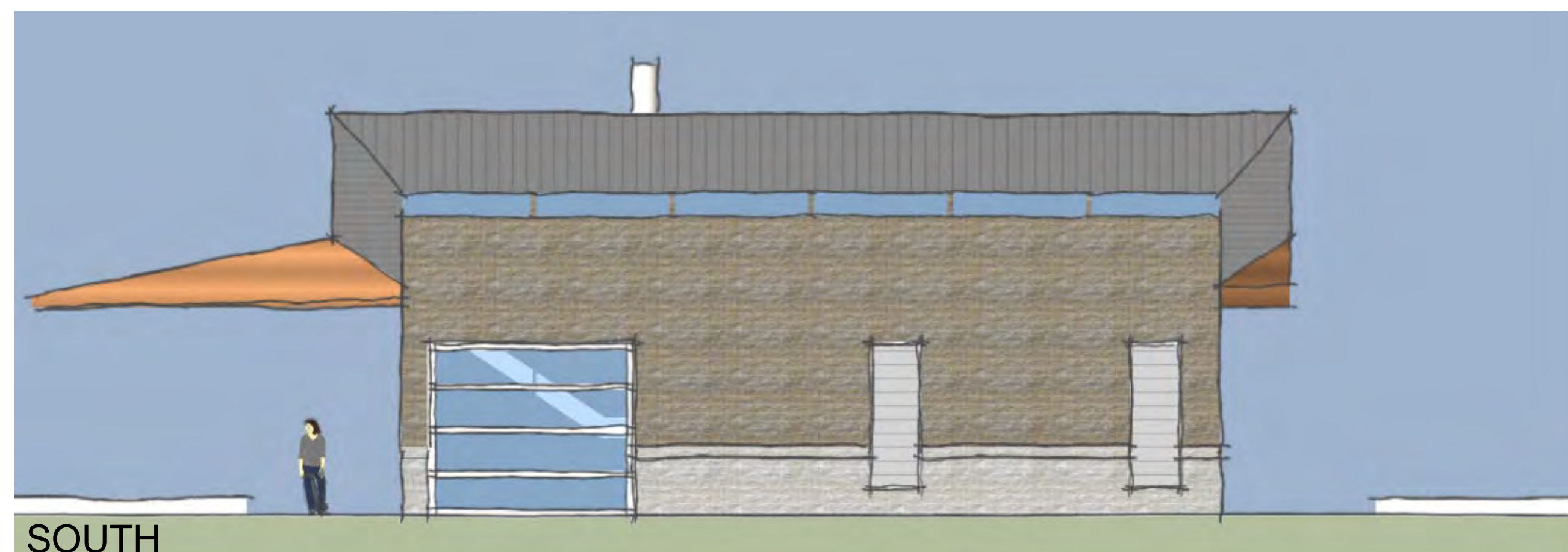
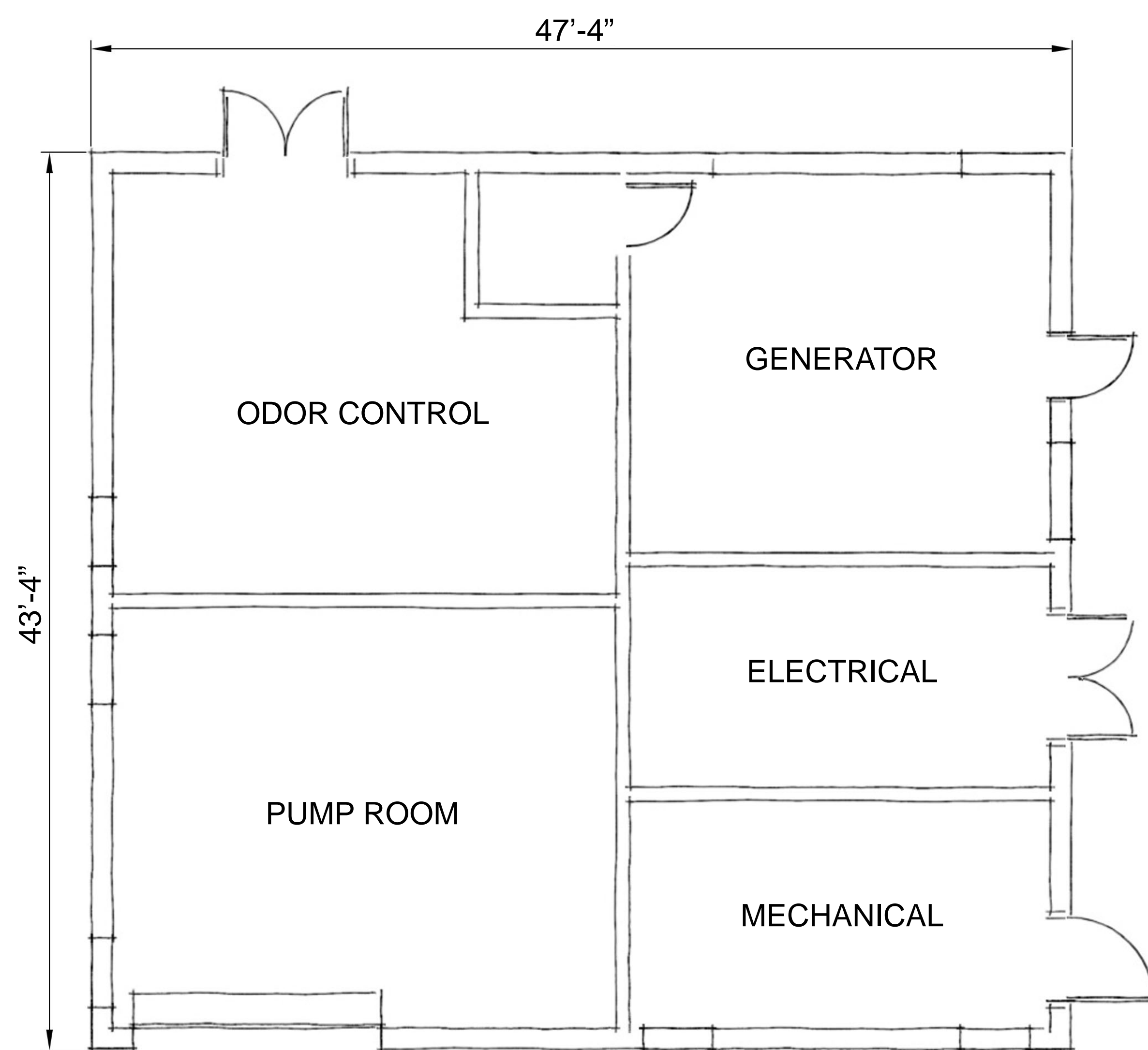


# BUILDING AS A WATERSHED



## GUIDING PRINCIPLES: ARCHITECTURE

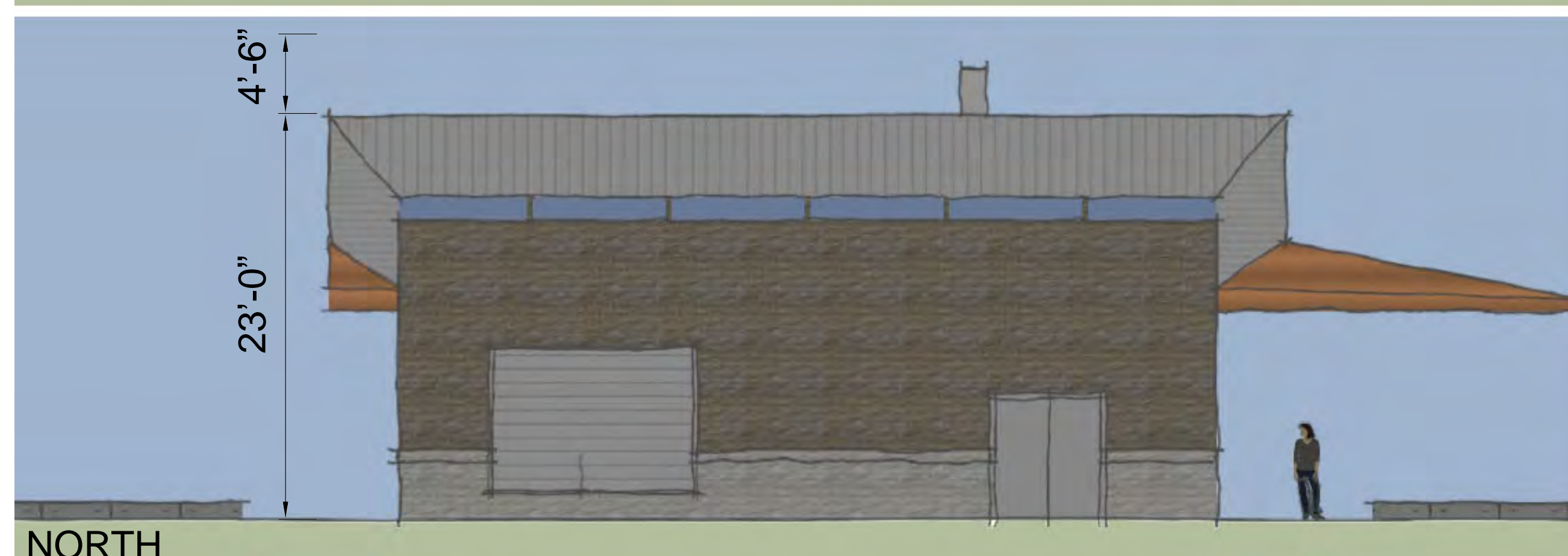
- \_ Limit building height and visual impact
- \_ Use natural and muted color palette and materials
- \_ Specify durable and low maintenance materials
- \_ Harmonize building with landscape design
- \_ Utilize roof to collect and direct rainwater
- \_ Integrate custom gutter as educational feature



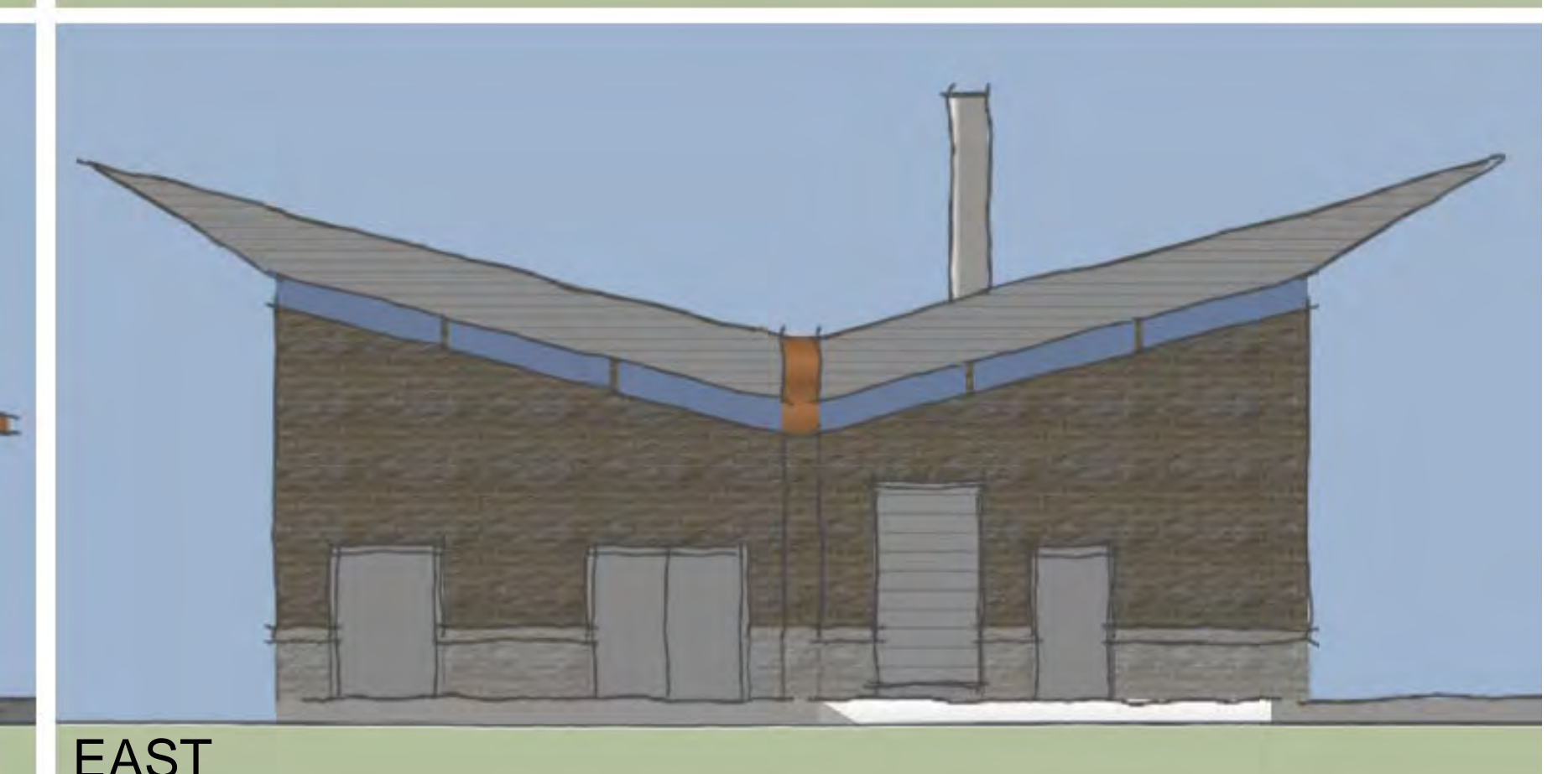
SOUTH



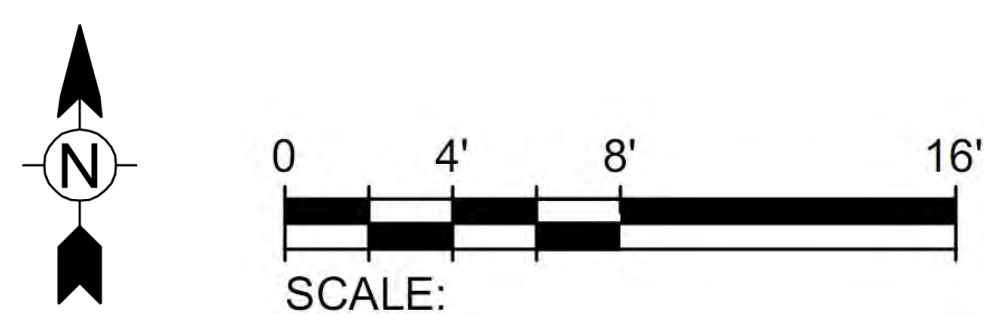
WEST



NORTH



EAST

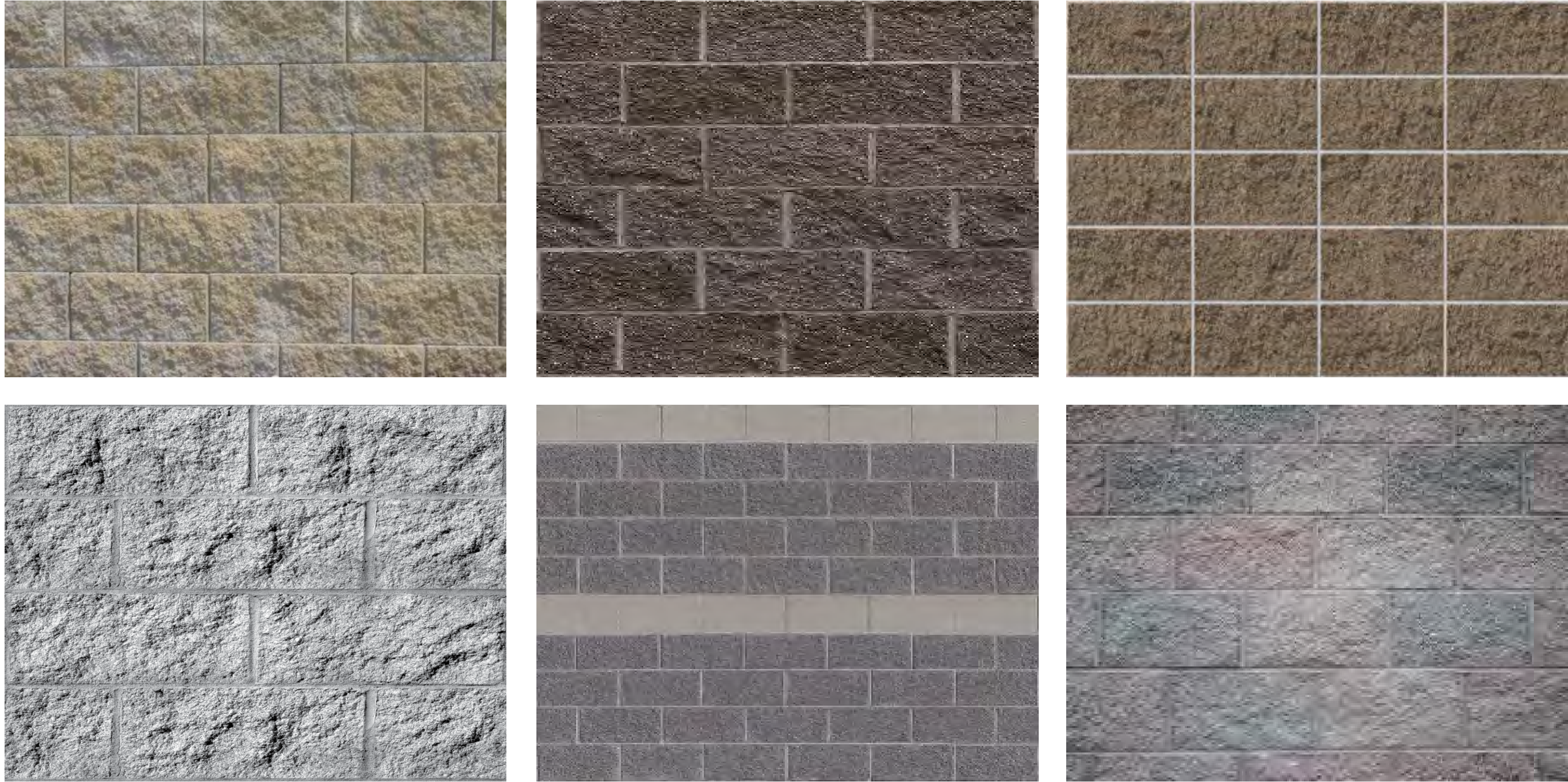




# MATERIAL PALETTE: WALLS



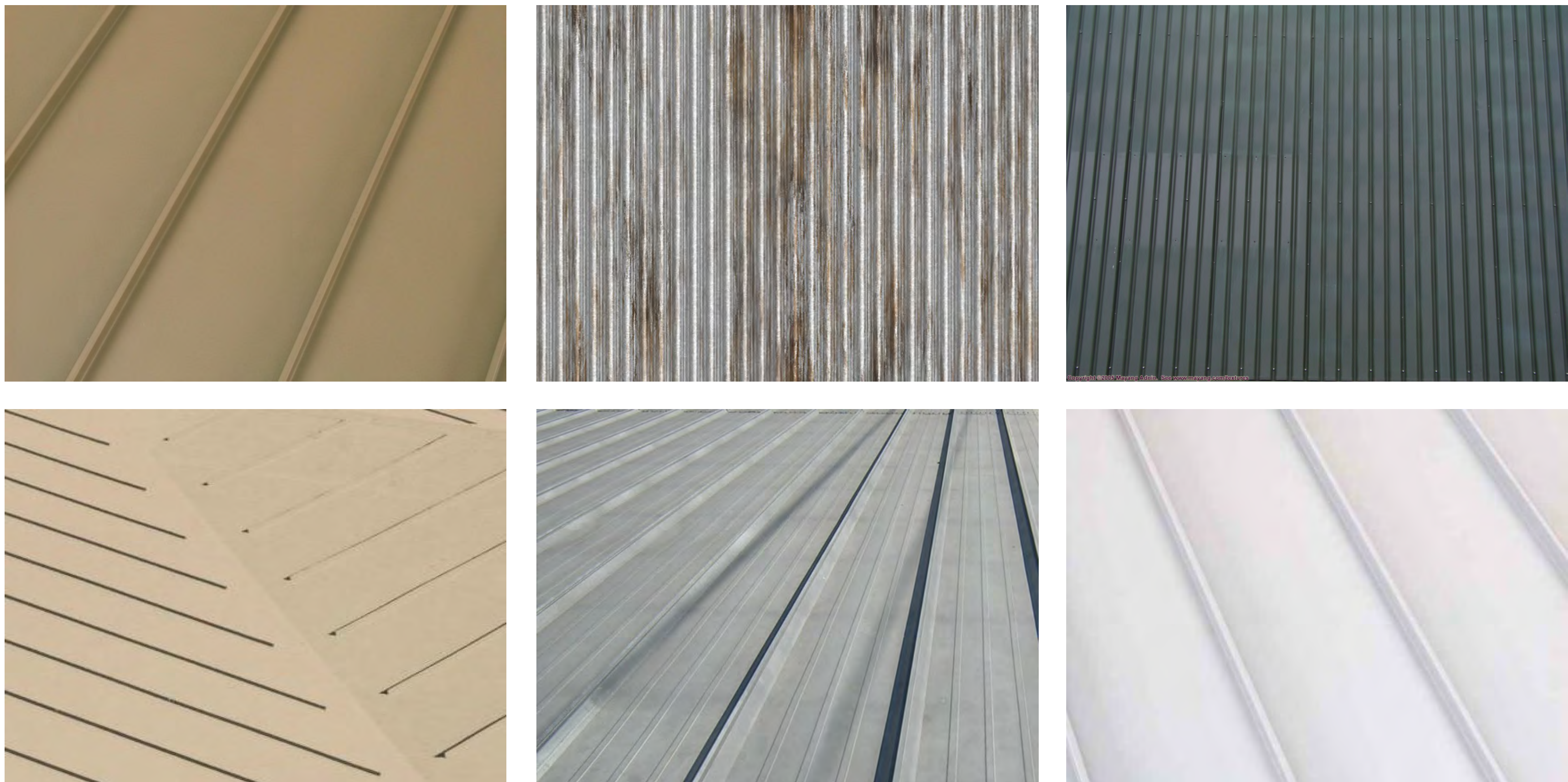
- \_ Concrete Masonry Unit (CMU)
- \_ Durable
- \_ Low maintenance
- \_ Natural look
- \_ Muted colors
- \_ Acoustic isolation



# MATERIAL PALETTE: ROOF



- \_ Metal roof
- \_ No glare from views above
- \_ Durable
- \_ Low maintenance
- \_ Long life span
- \_ Reflect heat

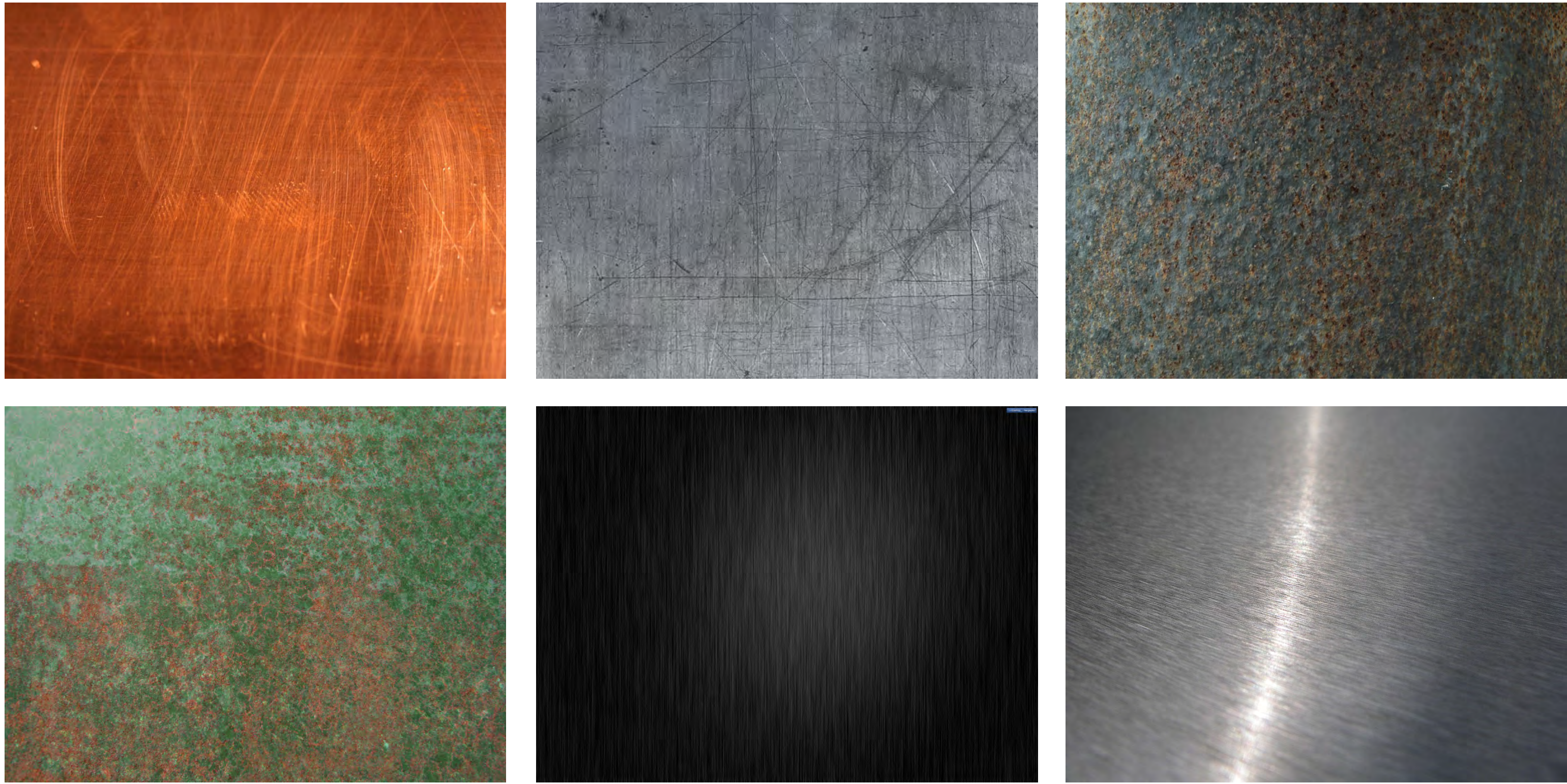




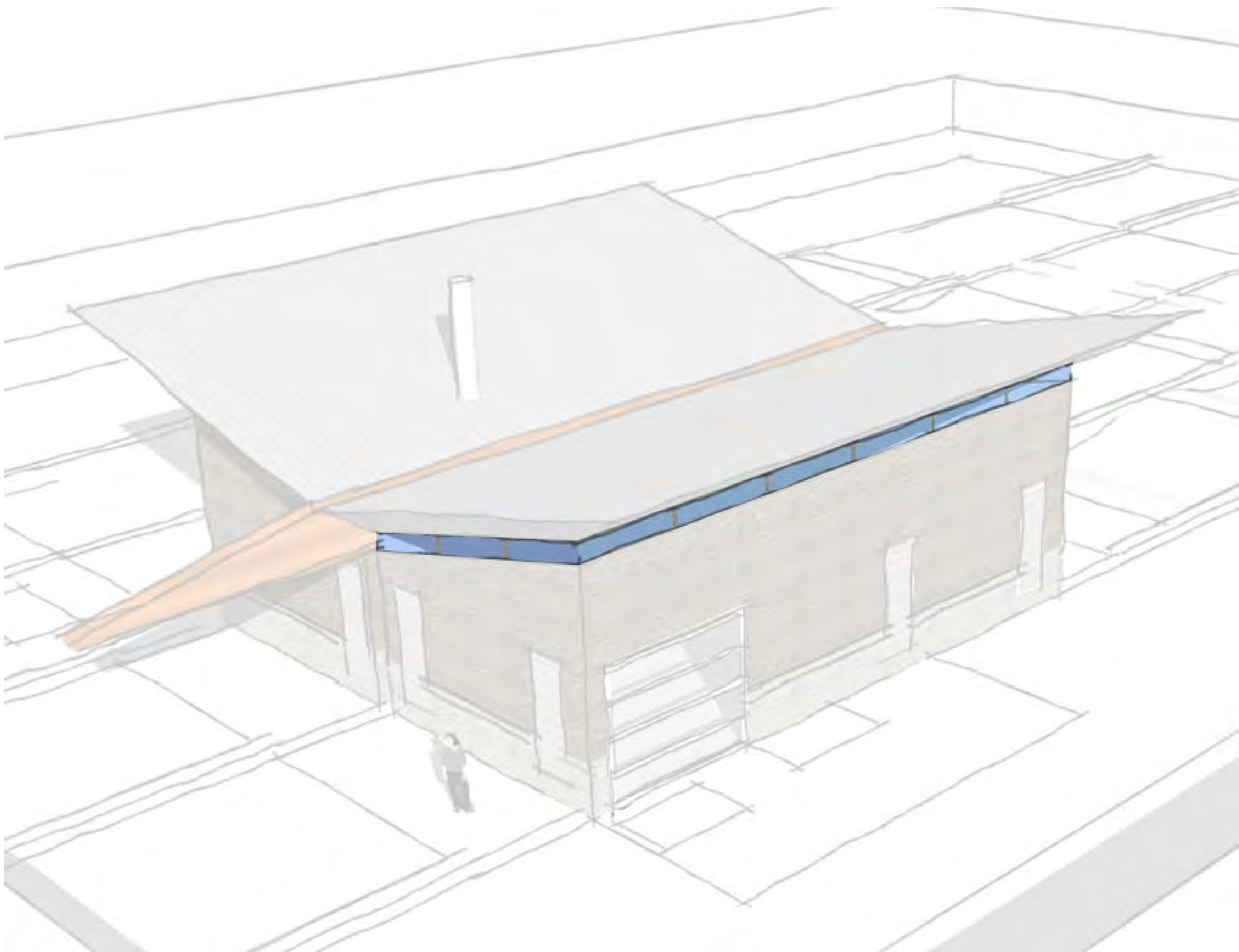
# MATERIAL PALETTE: RAIN GUTTER



- \_ Distinct feature
- \_ Convey rainwater
- \_ Create water feature
- \_ Educational opportunity



# MATERIAL PALETTE: WINDOWS



- \_ Bring natural light inside
- \_ Reduce need for artificial light
- \_ Sized to avoid bird interference

