



Investigation continues at North Beach Pump Station - Update

King County will be continuing investigation at the North Beach Pump Station facilities. The County is following up after a sinkhole was observed next to the pump station on January 27. Work has proceeded carefully to protect the operating facilities.

On Monday, Feb. 9, the County's contractor will restore the park area affected by work on Saturday. This area of the park will remain closed, along with the beach area. Blue Ridge residents can access the park area north of the construction fencing.

Facilities Inspection and Engineers will be on site during the day and overnight to continue the investigation. The County's Environmental Lab will be accessing the beach to take water quality samples. Neighbors may see employees in safety vests and hard hats accessing the park and beach during the day and after hours to continue the investigation.

King County's response team thanks everyone for your patience while the investigation's field work continues. We are available to address questions and concerns. Thank you to the neighbors who have contacted us already and are sharing information with others.

What neighbors can expect

- The County's inspection truck will be on site.
- People will see vehicles, equipment, and trucks coming and going from the work site at 9921 Triton Drive NW.
- Employees will be on site and accessing the beach through Blue Ridge Park during the day and after hours.
- Traffic will be directed around the site. Please drive slowly and obey any signs or flaggers.

If you have questions or concerns, please contact Monica Van der Vieren at 206-477-5502 or monica.vandervieren@kingcounty.gov.

The North Beach Pump Station and force main were built in the 1960's to carry wastewater from the North Beach/Blue Ridge area to Carkeek Wet Weather Treatment Facility. From Carkeek, the wastewater travels to West Point Treatment Plant.

King County added a storage tank and odor control to the existing North Beach Pump Station to reduce overflows of untreated stormwater and sewage into Puget



Sound during large storms. Those facilities went online in 2015 and continue to operate.

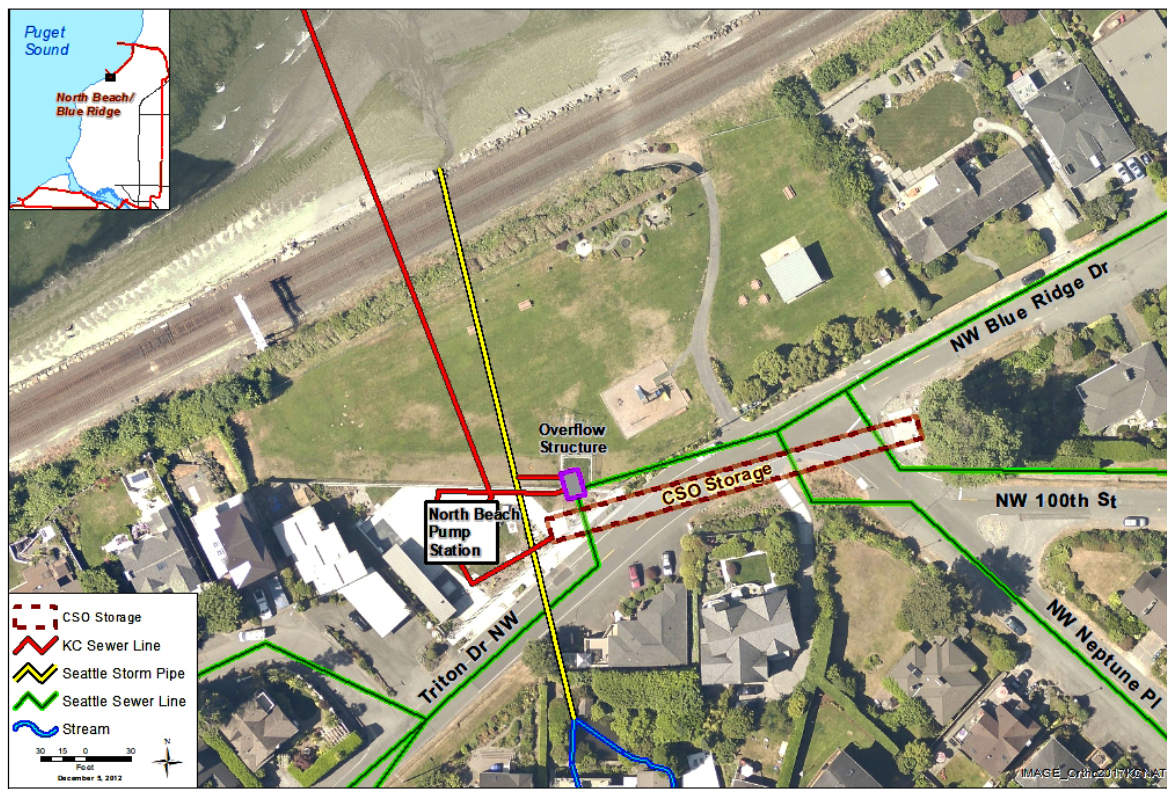
The County has been testing water quality in the area as a precaution. All monitoring results have been reported to Public Health - Seattle & King County, which has recommended temporarily closing the beach due to high bacteria counts in recent samples. The area is posted with signs and the Washington Department of Ecology has been notified. The beach will remain closed until the situation at the North Beach Pump Station is identified and resolved, and bacteria levels in water quality samples have returned to safe levels.

For more information

To learn about the facilities at North Beach, visit the Web:

www.kingcounty.gov/depts/dnrp/wtd/capital-projects/completed/north-beach-cso-control.aspx

Map of North Beach Pump Station area with City and County facilities



ALTERNATIVE FORMATS AVAILABLE
206-477-5371 / 711 (TTY Relay)