



King County crews preparing for pipe repair at North Beach Pump Station Feb. 12

King County's response team has been working around the clock to identify the source of a problem at the North Beach Pump Station. On Wednesday, crews will begin mobilizing to carry out pipe repair work. This investigation has been underway since a sinkhole was observed next to the pump station on January 27. Work has proceeded carefully to protect the operating facilities.

The County's contractor is restoring the area of Blue Ridge Park affected by excavation on Saturday, Feb. 9. Crews uncovered the force main pipe that extends across the park. They found the pipe intact, and soils around the pipe clean, compact, and dry. During investigation and repair, this area of the park will remain closed, along with the beach area. Blue Ridge residents can access the park area north of the construction fencing.

Dye testing over the weekend identified an area on King County's property that will require excavation to access the pipe underneath. On Wednesday, crews will begin mobilizing for excavation and repair. Equipment, trucks, and pumps will be on site during the repair process. **We will keep the community up to date on details- watch for updates!**

The County's Environmental Lab will be accessing the beach to take water quality samples. Neighbors may see employees in safety vests and hard hats crossing the park and accessing the beach during the day and after hours.

King County's response team thanks everyone for your patience while the field work continues. Thank you to the neighbors who have contacted us already and are sharing information with others.

What neighbors can expect

- People will see vehicles, equipment, and trucks coming and going from the work site at 9921 Triton Drive NW.
- Employees will be on site and accessing the beach through Blue Ridge Park during the day and after hours.
- There may be traffic delays as equipment and materials are delivered. Please drive slowly and obey signs and flaggers.

If you have questions or concerns, please contact Monica Van der Vieren at 206-477-5502 or monica.vandervieren@kingcounty.gov.



King County

Department of
Natural Resources and Parks
Wastewater Treatment Division

NORTH BEACH PUMP STATION

FEBRUARY 11, 2020

The North Beach Pump Station and force main were built in the 1960's to carry wastewater from the North Beach/Blue Ridge area to Carkeek Wet Weather Treatment Facility. From Carkeek, the wastewater travels to West Point Treatment Plant.

King County added a storage tank and odor control to the existing North Beach Pump Station to reduce overflows of untreated stormwater and sewage into Puget Sound during large storms. Those facilities went online in 2015 and continue to operate.

The County has been testing water quality in the area as a precaution. All monitoring results have been reported to Public Health - Seattle & King County, which has recommended temporarily closing the beach due to high bacteria counts in recent samples. The area is posted with signs and the Washington Department of Ecology has been notified. The beach will remain closed until the situation at the North Beach Pump Station is identified and resolved, and bacteria levels in water quality samples have returned to safe levels.

For more information

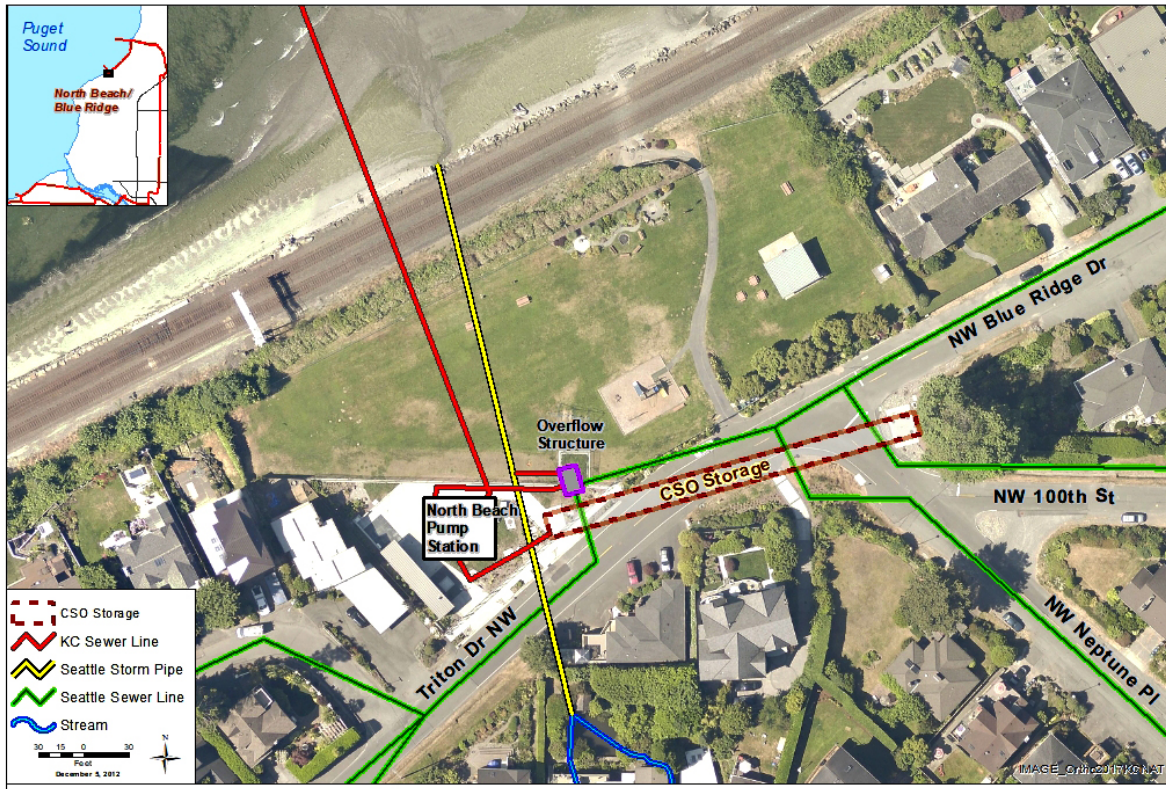
To learn about the facilities at North Beach, visit the Web:

www.kingcounty.gov/depts/dnpr/wtd/capital-projects/completed/north-beach-cso-control.aspx

If you have questions or concerns, please contact Monica Van der Vieren at 206-477-5502 or monica.vandervieren@kingcounty.gov



Map of North Beach Pump Station area with City and County facilities



ALTERNATIVE FORMATS AVAILABLE
206-477-5371 / 711 (TTY Relay)