



## Overnight Repair Work at North Beach Pump Station Starts TONIGHT - Wednesday, February 12

King County's crews will be working overnight at the North Beach Pump Station facilities tonight, Wednesday, February 12. The County's team has identified the leak location and will work around the clock to repair the pipe.

This investigation began on January 27 when a sinkhole was observed next to the pump station. Work has proceeded carefully to protect the operating facilities.

During pipe repair, vacuum trucks will pump wastewater flows out of North Beach facilities to be discharged into the system outside of the basin. Vacuum trucks will be staged on Triton Drive NW and traveling back and forth until the work is finished. Pumping wastewater and hauling it offsite is necessary to prevent overflows and backups.

King County regrets the disruptions to neighbors while this work occurs. Thank you to the community for your patience. We appreciate community members who have contacted us already and are sharing information with others.

### What neighbors can expect

- **Construction traffic will be heavy on Triton Drive NW.** People can expect delays and temporary lane closures as trucks and equipment travel to and from the site. **Please drive slowly and obey signs and flaggers.**
- **There will be noise and lights overnight at the site and in the street.** People will hear vacuum trucks pumping wastewater throughout the work, including overnight. There will be heavy equipment working on the area, and crews on site.
- **Blue Ridge Park will remain closed during the work.** The response team will let the Blue Ridge Manager know when it is safe for people to access the site.

Once repairs are complete, King County will conduct inspections and water quality monitoring to ensure that there are no further issues. The County will work closely with Blue Ridge on restoration of affected areas.

The County will resume testing water quality in the area once repairs are complete. All monitoring results are being reported to Public Health - Seattle & King County. PHSKC has recommended temporarily closing the beach due to high bacteria counts. The area is posted with signs and the Washington Department of Ecology has been notified.

**If you have questions or concerns, please contact Monica Van der Vieren at 206-477-5502 or [monica.vandervieren@kingcounty.gov](mailto:monica.vandervieren@kingcounty.gov)**



## For more information

To learn about the facilities at North Beach, visit the Web:

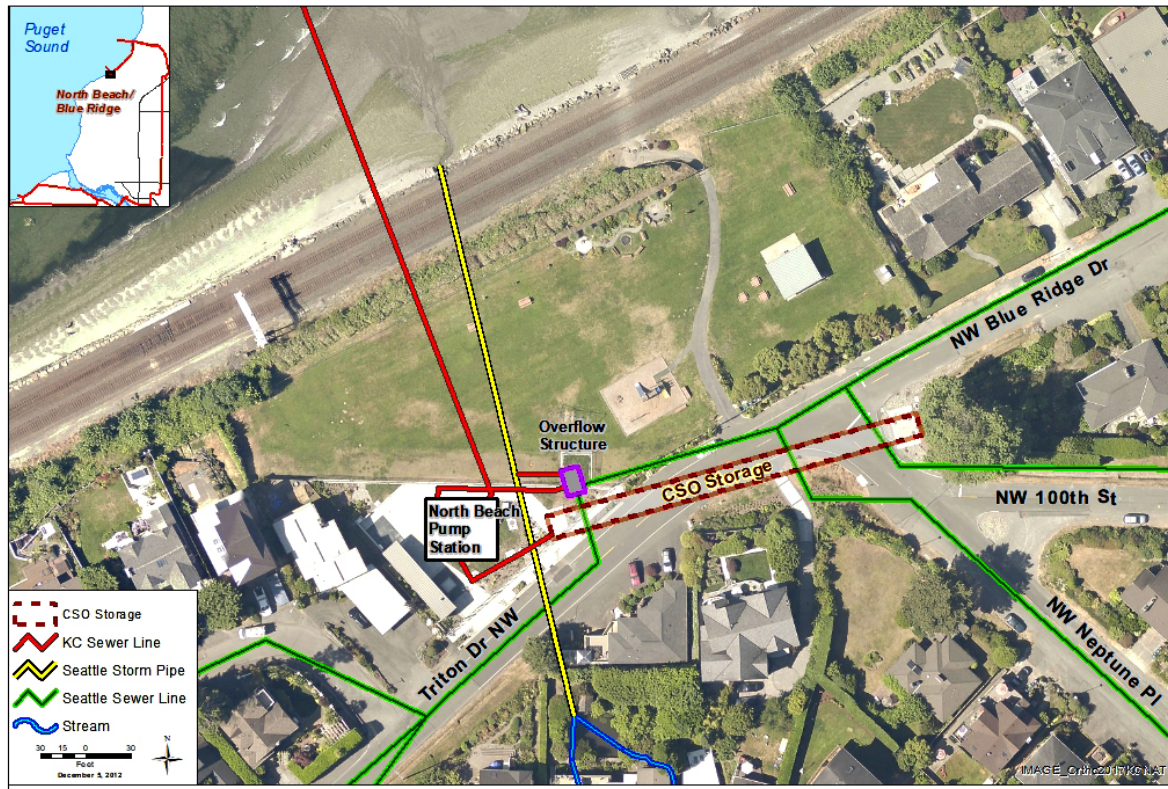
[www.kingcounty.gov/depts/dnrp/wtd/capital-projects/completed/north-beach-cso-control.aspx](http://www.kingcounty.gov/depts/dnrp/wtd/capital-projects/completed/north-beach-cso-control.aspx)

The North Beach Pump Station and force main were built in the 1960's to carry wastewater from the North Beach/Blue Ridge area to Carkeek Wet Weather Treatment Facility. From Carkeek, the wastewater travels to West Point Treatment Plant.

King County added a storage tank and odor control to the existing North Beach Pump Station to reduce overflows of untreated stormwater and sewage into Puget Sound during large storms. Those facilities went online in 2015 and continue to operate.

The County has been testing water quality in the area as a precaution. All monitoring results have been reported to Public Health - Seattle & King County, which has recommended temporarily closing the beach due to high bacteria counts in recent samples. The area is posted with signs and the Washington Department of Ecology has been notified. The beach will remain closed until the situation at the North Beach Pump Station is identified and resolved, and bacteria levels in water quality samples have returned to safe levels.

## Map of North Beach Pump Station area with City and County facilities



**ALTERNATIVE FORMATS AVAILABLE**  
**206-477-5371/711 (TTY Relay)**