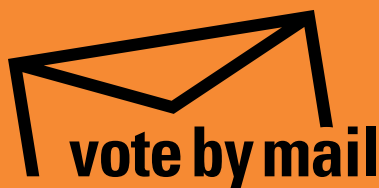


August 16, 2011 Primary and Special Election

**King County**  
**Official Local Voters' Pamphlet**



For more information call  
206-296-VOTE (8683) or visit  
[www.kingcounty.gov/elections](http://www.kingcounty.gov/elections)

Published by:



**King County**  
Elections



Dear King County Voter:

I am one of those people who enjoys celebrating the spirit of each season and summer is a favorite. After a string of rainy months, we finally get to plan our events (with some degree of confidence) to take place outdoors and recognize important holidays that celebrate the freedoms Americans have throughout our history fought for and defended. The right to vote is among the freedoms we hold dear. Maintaining the privacy and security of each voter's ballot are critical requirements of our voting process and something that every member of the Elections' team understands and protects.

While we are always looking for ways to cut costs, efficiencies should never compromise the integrity of a single vote. Ballot security is taken extremely seriously by the Elections Department and is addressed in multiple ways— physical measures, technology measures, handling processes, and layers of oversight.

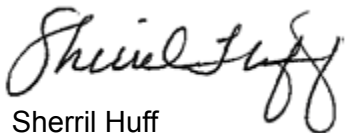
The security measures in place for each election include these and more:

- Ballots and ballot processing areas are safeguarded by key card access only and biometric controls that check fingerprints.
- All staff, observers, visitors and media must be credentialed and wear a badge at all times. Color-coded lanyards allow for quick identification of level of security clearance.
- Staff, political party observers and others participate in a Logic and Accuracy Test to ensure equipment will function properly in preparation for each election and that essential security protocols are in place
- There is no wireless internet at Elections headquarters.
- More than 20 security cameras monitor and record activities in and around the building 24 hours a day.
- Sheriff's deputies patrol the building on key dates and assist with ballot drop box retrieval
- Building alarm systems are on doors and high security areas.
- Ballots have a batching and tracking system.
- A formal chain of custody process supports all movement of ballots.
- Observers from both political parties are requested to be on site for every election as added assurance of oversight and accountability.
- The 13-member Citizen's Election Oversight Committee is appointed by the County Council and monitors each county election.

Finally, the public is an important partner in monitoring elections and I'd like to invite everyone to participate! During an election, take a look at ballots being opened by election staff by going to our website and using the webcam at [www.kingcounty.gov/elections](http://www.kingcounty.gov/elections). You are always welcome to visit us in person, anytime, and without an appointment during business hours. You will need to first check in and then you can walk "the loop" in the Elections office, where the entire ballot processing area is visible. I promise you will be surprised at the detail involved in ballot processing and the security measures you will see and experience.

The Elections Department has recently returned to our headquarters location in Renton, a facility designed for optimal viewing of each step of our operations. It's great to be back and we will be celebrating our return with an open house later in the year. Until then, I wish everyone a wonderful summer and we hope to see you during one of the upcoming elections in Renton!

Best Regards,

  
Sherril Huff



For more information on visiting Elections to "do the loop" or set up a group tour, call 206-296-1540.

## Frequently asked questions

### Why are there measures and candidates in the local voters' pamphlet that are not on my ballot?

Don't worry, your ballot is correct.

The measures and races on your ballot reflect the districts in which you are registered to vote. The local voters' pamphlet may cover multiple districts and include measures and races outside of your districts.

### What is an explanatory statement?

An explanatory statement is prepared by each district's attorney stating the effect of the ballot measure if passed into law.

### How are committees in favor of or in opposition to a measure formed?

Districts choosing to participate in a local voters' pamphlet are responsible for appointing committee members who agree to write statements.

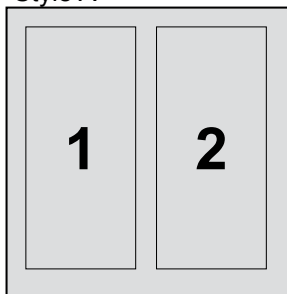
The statements are a way to persuade voters to vote for or against a measure. King County Elections is not responsible for the content of the statements.

### What is the order of candidates in the local voters' pamphlet?

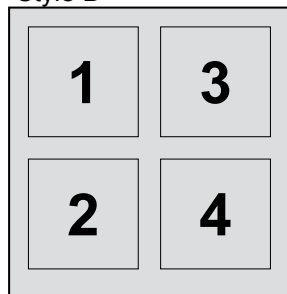
Candidates in the local voters' pamphlet appear in the order they will appear on the ballot.

Candidates are given word limits based upon the number of registered voters within each district. Below is a guide to determining the ballot order for candidates on a page.

Style A



Style B



## Table of contents

### General information

A letter from the Director of Elections. . . . .	2
Reading the voters' pamphlet. . . . .	3
Returning your ballot. . . . .	5
Duties of offices in this election. . . . .	7

### King County

Metropolitan King County. . . . .	8
-----------------------------------	---

### Judicial

Court of Appeals, Division No. 1, District No. 1. . .	13
---	----

### City

City of Burien. . . . .	14
City of Federal Way. . . . .	16
City of Lake Forest Park. . . . .	17
City of Kirkland. . . . .	18
City of Kent. . . . .	20
City of Milton. . . . .	23
City of Newcastle. . . . .	24
City of Renton. . . . .	25
City of Sammamish. . . . .	26
City of Seattle. . . . .	28
City of SeaTac. . . . .	34
City of Tukwila. . . . .	35

### School

Seattle School District No. 1. . . . .	36
Federal Way School District No. 210. . . . .	46

### Special purpose

King County Fire Protection District No. 16. . . .	47
King County Fire Protection District No. 43. . . .	50
King County Water District No. 20. . . . .	51
Soos Creek Water and Sewer District. . . . .	52
Public Hospital District No. 1. . . . .	54

### Ballot Measures

King County. . . . .	57
City of Seattle. . . . .	58
City of Tukwila. . . . .	60

### Candidate index. . . . . 63

# register & vote!

## Requirements

To register to vote in Washington, you must be:

- A citizen of the United States
- A legal resident of Washington State
- At least 18 years old by Election Day

## How to register

- Register online with the Secretary of State, [www.sos.wa.gov](http://www.sos.wa.gov)
- Download a registration form from the King County Elections website, and return it by mail or in person
- Register in person at the King County Elections office

## Registration deadlines

While you may register to vote at any time, there are registration deadlines prior to each election. The deadlines for the August 16, 2011, primary election:

- **July 18** – Deadline to register by mail or online, or to transfer or update voter registration
- **August 8** – Deadline for people who are not currently registered in Washington

## Keep your voter registration current

Update your registration if you have moved or changed your name, or if your signature has changed. Simply submit a new registration form to update your information.

You've moved your furniture, your clothes, the kids and the dog.

## But what about your vote?

Did you know that when you move you need to update your address with King County Elections?

You can update your address online, by phone, or by visiting our office.



## Contact us

### Phone:

206-296-VOTE (8683)  
1-800-325-6165  
TTY Relay: 711

### Email:

[elections@kingcounty.gov](mailto:elections@kingcounty.gov)

### Online:

[www.kingcounty.gov/elections](http://www.kingcounty.gov/elections)

### Mail or in-person:

919 Southwest Grady Way  
Renton, WA 98057



# Returning your ballot



## Ballot Drop Boxes

King County Elections offers ballot drop boxes as an option for returning your ballot without using the U.S.

Postal Service or a first class stamp.

Ballot drop boxes are located across the county and open 24-hours a day beginning Thursday, July 28.

Ballot drop boxes close on Election Day, August 16, at 8:00 p.m.

### Ballot drop box locations:

**!** Please note that some of the ballot drop box locations have changed.

#### Crossroads Shopping Center - South entrance

15600 NE 8th Street, Bellevue 98008

#### Federal Way City Hall

33325 8th Avenue South, Federal Way 98003

#### Issaquah City Hall

130 East Sunset Way, Issaquah 98027

#### King County Elections

919 SW Grady Way, Renton 98057

#### Lake Forest Park City Hall

17425 Ballinger Way NE, Lake Forest Park 98155

#### Regional Justice Center

401 4th Avenue N, Kent 98032

*Near parking garage entrance*

#### Redmond City Hall

15670 NE 85th Street, Redmond 98052

#### Tahoma School District

25720 Maple Valley-Black Diamond Rd SE,  
Maple Valley 98038

### Seattle ballot drop box locations:

#### King County Administration Building

500 4th Avenue

#### Magnuson Park

6344 NE 74<sup>th</sup> Street (use NE 74<sup>th</sup> St entrance)  
Seattle, WA 98115

#### Ballard Branch Library

Corner of NW 57<sup>th</sup> Street & 22<sup>nd</sup> Avenue NW

## Through the mail

You can vote and return your ballot through the U.S. Postal Service as soon as you receive it. Ballots must be postmarked by August 16. This requires first class postage.



## Accessible voting centers

Accessible voting centers are available for voters who need assistance completing their ballot. Trained staff and specialized equipment is available to help voters with disabilities cast a private, independent ballot.

### King County Elections

919 SW Grady Way, Renton, 98057

July 27 - August 15

Monday - Friday, 8:30 a.m. - 4:30 p.m.

Tuesday, August 16, 7:00 a.m. - 8:00 p.m.

### Bellevue City Hall

450 110th Ave. NE, Bellevue, 98009

Monday, August 15, 10:00 a.m. - 5:00 p.m.

Tuesday, August 16, 7:00 a.m. - 8:00 p.m.

### Seattle Union Station

401 S. Jackson St., Seattle, 98104

Monday, August 15, 10:00 a.m. - 5:00 p.m.

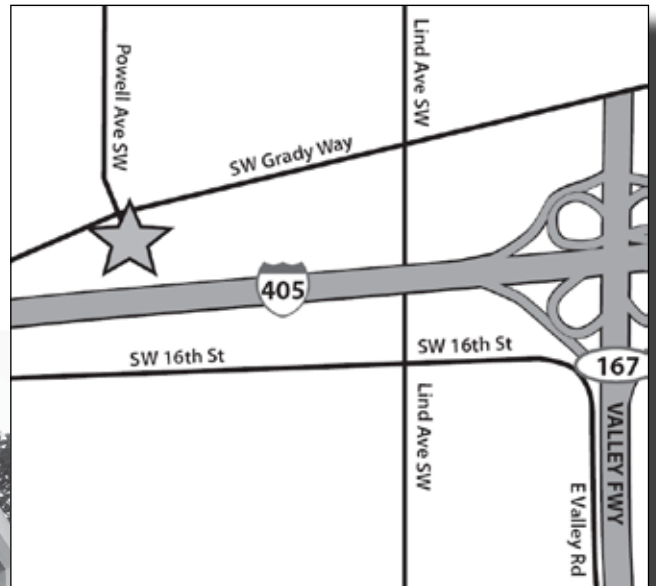
Tuesday, August 16, 7:00 a.m. - 8:00 p.m.

# King County Elections has moved to Renton!

King County Elections is now located at 919 Southwest Grady Way in Renton. The building features a viewing loop around the area where ballots are processed, which allows the public to visit and take a self-guided tour.

We hope you'll visit us during the primary or general election to see an election in action and learn more about how they are conducted. For more information on hours and visiting Elections call 206-296-VOTE (8683).

King County Elections returned to the same facility we used until 2009, when the risk of flooding from the Howard Hanson Dam resulted in a temporary move to Tukwila.



Title	Duties	Term (years)	Salary (2011)
<b>Metropolitan King County Council</b> (elected by voters in the County Council District)	<ul style="list-style-type: none"> <li>• Sets policies and enacts laws</li> <li>• Develops and adopts county budget</li> <li>• Oversees county services</li> <li>• Represents and serves the needs of citizens</li> </ul>	4	\$131,578.72
<b>Court of Appeals Judge</b> (elected by all voters in King County)	Hears and decides on most of the appeals from Superior Court	4	\$156,328.00
<b>City Mayor</b> (elected by voters in the city)	<ul style="list-style-type: none"> <li>• Manages the administration of the city</li> <li>• Oversees operations and budget of a city</li> <li>• Represents and serves the needs of citizens</li> </ul>	4	Lake Forest Park, \$36,000 Milton, \$18,000
<b>City Council</b> (elected by all voters in the city)	<ul style="list-style-type: none"> <li>• Approves the city's budget</li> <li>• Develops laws and policies</li> <li>• Oversees public services</li> <li>• Represents and serves the needs of citizens</li> </ul>	4	\$0-\$117,533.42 Varies by city
<b>School District Director/Position</b> (*elected by all voters in the school district) <i>*Seattle School District No. 1 director districts are only voted on by voters within each director district for the primary election</i>	<ul style="list-style-type: none"> <li>• Sets policies for schools</li> <li>• Provides oversight for the operations of the school system</li> <li>• Represents and serves the needs of citizens</li> </ul>	4	No annual salary
<b>Fire District Commissioner</b> (elected by all voters in the fire district)	<ul style="list-style-type: none"> <li>• Oversees fire services including fire response and protection, emergency medical aid and more</li> <li>• Represents and serves the needs of citizens</li> </ul>	6	No annual salary
<b>Water District Commissioner</b> (elected by all voters in the water district)	<ul style="list-style-type: none"> <li>• Oversees the water district to provide clean, safe drinking water</li> <li>• Represents and serves the needs of citizens</li> </ul>	6	No annual salary
<b>Sewer/Wastewater District Commissioner</b> (elected by all voters in the sewer/wastewater district)	<ul style="list-style-type: none"> <li>• Oversees the sewer district to keep up facilities, meet water needs and meet environmental requirements</li> <li>• Represents and serves the needs of citizens</li> </ul>	6	No annual salary
<b>Public Hospital Commissioner</b> (elected by all voters in the Public Hospital District)	<ul style="list-style-type: none"> <li>• Oversees hospital operations and delivers services to promote health</li> <li>• Represents and serves the needs of citizens</li> </ul>	6	No annual salary



## Patsy Bonincontri

**Occupation:** An architect for over 20 years, I build communities worldwide

**Education:** I hold a Bachelor of Architecture degree from the University of Southern California

**Statement:** With limited resources and growing demand for better services, King County faces critical challenges. I can solve our issues in a **non-partisan, open-minded, practical and effective way**. Vote for me

and I will tackle our problems and build a fiscally sound, environmentally sustainable King County.

My life as a Navy wife living, working and raising two children all over the world has taught me how to learn from others and do more with less. My experience as an architect has taught me that working together we build community. My public service has taught me that economic stability is the foundation of meeting community needs.

I served on Bellevue Planning Commission from 1998 to 2007, working on land use implementation. I served on Bellevue Construction Code Advisory Committee, improving services to homeowners, businesses and contractors. I served on Sound Transit's Citizen Oversight Panel, helping guide a regional transportation system.

In 2008, I was appointed to Bellevue City Council. As representative on Puget Sound Regional Council's Growth Management Board, I worked on policies to attract new businesses and create opportunities. On the Committee to End homelessness and Eastside Human Services Forum, I undertake challenges to meet basic needs of the vulnerable.

We can find ways to support growth and provide resources to residents and businesses without damaging the natural beauty around us.

We can find ways to provide for open space, arts, sports and entertainment to foster a vibrant community that attracts top talent and innovative companies to King County.

We can find ways to help our fellow citizens who are less fortunate by investing in life-long learning opportunities and effective human services.

I look forward to the opportunity to apply my diverse experience on policies that are responsive to residents and businesses and keep King County - a great place to live.

**Contact Information:**

15600 NE 8th Street B1 PMB 426  
Bellevue, WA 98008

425-829-0773  
[www.vote4patsy.com](http://www.vote4patsy.com)



## Richard E. Mitchell

**Occupation:** Attorney

**Education:** Bachelor of Architecture (Cornell), Master of Urban Planning (Michigan), Juris Doctor (Syracuse)

**Statement: Leadership you can trust**

Richard Mitchell is a tireless advocate for change, a community leader on social justice issues, and a lawyer with degrees in architecture and urban planning. Richard believes that Eastside communities and

working families deserve leadership they can trust. He knows that dedication is needed to solve the County's challenges. As an activist and leader on health services, housing, land use, urban planning, and justice issues, Richard will bring experience, work ethic and integrity to the King County Council.

**Experience that matters**

Richard Mitchell is a former General Counsel to the Office of the Governor, a trial and real estate lawyer who serves as a trustee for the Legal Foundation of Washington, a regent at Seattle University, and a Commissioner on the King County Housing Authority. He is a past board member of the International Community Health Services Foundation, and former adjunct faculty member at Seattle University's School of Law. Richard has served on the boards of several non-profits including Environmental Works and the Washington Low Income Housing Network. His broad experiences on a range of issues involving suburban and urban planning, transportation and environmental concerns is the right kind of experience to represent the Eastside.

**Diverse, Innovative Leadership**

Richard Mitchell is endorsed by community members, business leaders, and elected officials including State Representatives Cindy Ryu and Roger Goodman, State Senator Adam Kline and former Senators Brian Weinstein, Claudia Kauffman and Randy Gordon, Kirkland City Councilmember Dave Asher, and Mercer Island Councilmember Mike Grady.

Richard Mitchell has also received the endorsements of the Sierra Club Washington State Chapter, 32nd, 41st, 45th, and 48th Legislative District Democrats, in addition to the sole endorsement of the King County Democrats.

Richard Mitchell has the integrity, experience and leadership we need. Elect Richard Mitchell for King County Council! [www.ElectRichardMitchell.com](http://www.ElectRichardMitchell.com)

**Contact Information:**

PO Box 1713  
Mercer Island, WA 98040

425-533-2912  
[www.electrichardmitchell.com](http://www.electrichardmitchell.com)



## Council District No. 6



## Jane Hague

**Occupation:** King County Council Member

**Education:** Attended Western Michigan University, President: National Association of Counties, President: Washington Association of County Officials

**Statement:** It is an honor to serve the Eastside.

Since I was first elected to the Council, I have reached out and worked across party lines to get results. I never let partisan political games get in the way of sound policy.

### Stopping Tax Increases and Overspending

During the past two years, my focus has been on balancing the budget and stopping unnecessary tax increases.

I blocked sales and car tab tax increases that would have cost working families millions of dollars. Last year, as Vice-Chair of the Council, I led the effort to work with county labor unions to reduce costs, saving more than \$20 million. Over ninety percent of county employees agreed to voluntary wage reductions.

As chair of the Council's Committee of the Whole, I have kept county leadership focused on remaking government so it is efficient and sustainable -- only then will we be able to have the transportation, criminal justice and social services our citizens deserve.

### Strong Endorsements from Democrats and Republicans

I have been endorsed by SEIU1199NW, the King County Corrections Guild, the Eastside Business Alliance, Bellevue Deputy Mayor Conrad Lee, Washington Women, Republican State Attorney General Rob McKenna and Democrat State Auditor Brian Sonntag, State Senators Andy Hill and Steve Litzow, as well as dozens of city officials.

### A Good Listener

I work hard to be a good listener for the citizens of the Eastside, working with elected officials and community leaders to help solve local and regional challenges. They know they can turn to me to get a helping hand.

The King County Boys & Girls Clubs named me *Children's Champion*, and multiple arts organizations have honored my efforts on behalf of the arts.

I live in Bellevue with my husband. We both enjoy the outdoors and are avid cyclists.

### Contact Information:

14150 NE 20th, PMB303  
Bellevue, WA 98007

425-786-2380  
www.janehague.com



## John Creighton

**Occupation:** King County Port Commissioner; Business Attorney

**Education:** Interlake High School, Bellevue; BA and MA, International Relations, Johns Hopkins University; JD, Columbia University

**Statement:** John Creighton: Effective Leadership, Real Reform

*What do Democrats, Republicans, Independents, business leaders, labor unions, environmentalists and transportation*

*advocates have in common?* All of them support John Creighton for King County Council. As your Port Commissioner since 2006, John has built a record of reform and results. As your advocate on the Council, John will have three main priorities: reforming county government, ensuring transportation choices, and protecting our environment.

John knows the King County Council needs to make tough reforms, starting with the Council itself. John proposes: \* Lowering the number of Councilmembers to 7. \* Reducing Councilmember pay to under \$100,000. \* Providing transparent accounting so taxpayers know where their money is being spent.

John believes we need to: \* Base decisions on bus service and light rail on ridership and engineering recommendations, not politics. \* Address critical freight and commuter needs throughout King County. \* Reduce overhead for Sound Transit and Metro and reduce duplication of the agencies.

John spearheaded the passage of a 6-part environmental motion on the Port Commission that made important environmental reforms such as prohibiting cruise ships from dumping in the Puget Sound. John proposes that King County: \* Prioritize work on protecting Puget Sound including appointing one person to oversee all storm water management issues County-wide. \* Strengthen policies that protect our quality of life as the region continues to grow in the coming decades.

John Creighton says: *"I grew up on the Eastside and care deeply about our community. The policies that the County puts into place in the next 5-10 years will shape our region for the next hundred. I will champion policies that help return our region to economic prosperity while strengthening our communities and protecting our environment."*

Please vote John Creighton for King County Council!

### Contact Information:

6619 - 132nd Avenue NE, PMB 182  
Kirkland, WA 98033

425-636-8924  
www.johncreighton.org



## Joe McDermott

**Occupation:** King County Councilmember

**Education:** M.P.A., University of Washington; B.A., Gonzaga University; Executive Education Program, Kennedy School, Harvard University

**Statement:** "King County faces challenges that require seasoned, effective leadership. On the County Council, the Sound Transit Board and in my years in the legislature, I've rolled up my sleeves and worked to get

results on issues that matter: transit and transportation priorities; land and water protection; human services and public safety. I look forward to continued service for our diverse and unique region. "

### Re-Elect Joe McDermott: Proven, Effective Leadership

A lifelong area resident, Joe McDermott is working hard to get King County back on track—bringing compassion and innovation to a difficult budget process and safeguarding critical services.

**REFORM:** Together with the Executive, Joe has worked to implement an ambitious reform agenda that is saving millions by enlisting the good ideas of employees and efficiency experts alike—preserving services and respecting employees.

**TRANSIT and TRANSPORTATION:** Joe supports needed investments in the South Park Bridge, preserving Metro Transit, and working to assure light rail construction in a difficult economy.

**SMALL BUSINESS and JOBS:** Joe supports continued assistance for workers, and help for small and emerging businesses that spur economic growth.

**HUMAN SERVICES:** Joe is an outspoken advocate for safeguarding services for the vulnerable, including crime victims and their families.

**ENVIRONMENTAL PROTECTION:** Joe sponsored the legislation to preserve Maury Island and continues to lead on Duwamish cleanup and other priorities.

Joe is proudly endorsed by the 34th Legislative District and King County Democrats; Executive Dow Constantine; Senator Sharon Nelson; Representatives Joe Fitzgibbon, Eileen Cody and Sharon Tomiko Santos; King County Labor Council; Seattle Fire Fighters Union, Local 27; NARAL Pro-Choice Washington and hundreds of our neighbors!

### Contact Information:

PO Box 16254  
Seattle, WA 98116

206-937-4184  
[www.JoeMcDermott.org](http://www.JoeMcDermott.org)



## Goodspaceguy

**Occupation:** Goodspaceguy42: Amateur astronomer, economist, handyman, accountant: a Spaceship Earth owner.

**Education:** University educated in America, Germany, and Sweden, Goodspaceguy earned Bachelor's and Master's degrees (including economics.)

**Statement:** The COMPETITIVE, free market economy produces the highest living standard for the people. Profit and wealth produce jobs.

Profit and wealth are incentives that produce jobs. When people speak against profits and wealth, they decrease jobs. Let's make King County into a JOBS, PROFIT, AND WEALTH COUNTY.

Unfortunately, year after year, our economy is continually sabotaged. Jobs and businesses disappear and decrease the goods and services produced. Our living standard becomes less than it could be. When average wages become too high in relation to average prices, profits decrease and produce the job loss called RECESSION. The job losses continue until the average wages come down in relation to prices. Then increasing profits bring back jobs.

Let's stop the sabotage. For example, the minimum wage has destroyed troubled businesses, has destroyed the jobs of many low-income workers, some of whom are now homeless or living with families or friends or are on welfare, a heavy, heavy burden for the workers to carry. The minimum wage does not create jobs. The minimum wage makes businesses and jobs go away. Wages for different types of labor should be set by the supply and the demand for each type of labor. Please help unsabotage our economy by demanding that the minimum wage be abolished, and by requesting that wages be set by supply and demand. Remember: Prices need to cover wages. The higher the wages, the higher the prices. The lower the wages, the lower the prices.

Often voters elect big spending flimflammers who don't understand economics: causing misery. The elected big-spenders continue to build big, big government, a heavy burden for workers to carry. ... sometimes in the form of unemployment. Elect small spending Goodspaceguy42@yahoo.com to grow jobs. Let's defend the profit prosperity that produces jobs.

### Contact Information:

10219 Ninth Avenue So.  
Seattle, WA 98168

206-601-8172  
<http://colonizespace.blogspot.com>

## Council District No. 8



## Diana Toledo

**Occupation:** King County Enforcement Coordinator, Animal Cruelty Investigator, and Licensing Supervisor.

**Education:** University of Washington Bachelors of Arts Degree; Business Administration - Finance Concentration.

**Statement:** Last year voters in King County stood against Councilmember Joe McDermott's platform issues; voting down each of his supported initiatives and

reversing harmful legislation that he had previously passed. Voters wisely recognized that although his platform issues may have been created with good intentions, the legislation was poorly written with no safeguards protecting our elderly, lower and middle class, and minority communities.

I am not afraid to stand against bad legislation and have the track record in King County to prove it. I've earned grass roots support from concerned citizens and a diverse list of community advocates including youth and senior services, animal rescue organizations and immigrant communities.

**Restoring** Critical Programs; **Eliminating** Ineffective Departments.

With this budget crisis, King County has decimated its safety net by cutting all social services, yet we have millions of dollars to spend on ineffective and elitist programs. I am willing to go against the establishment and eliminate waste; redirecting funds to critical programs that impact our youth, seniors and disadvantaged citizens.

**Funding for our kids, not cultural elites.** We spend millions funding an elite few adult "artists" while eliminating Arts programs in schools. Dissolve 4Culture; instead fund Public School Arts.

**The KC Ombudsman's Office has no teeth.** It must live up to its mandates or be defunded. I'm demanding true whistle-blower protection and a safe working environment for all employees.

**KC Communication staff reduction.** With a Communication liaison assigned to nearly every department spinning and sterilizing all information before it reaches the public; reductions would save millions and allow for better public transparency.

I have 15 years of regulatory experience specific to King County, bringing a new "internal" perspective to the Council. I will use my front-line principles, insight and County expertise to make sure out-of-touch lawmakers hear YOUR voice.

Visit [www.VoteTOLEDO.com](http://www.VoteTOLEDO.com) for endorsements.

**Contact Information:**

4701 SW Admiral Way #39  
Seattle, WA 98116

206-333-8118  
[www.VoteTOLEDO.com](http://www.VoteTOLEDO.com)

**Candidate statements and measure arguments are printed exactly as submitted.**

King County Elections does not fact check or correct punctuation, grammar, syntax errors or inaccurate information.

# Washington votes by mail

The state legislature recently passed legislation making Washington a state that votes entirely by mail, a process that King County has used since 2009.

---

**All voters receive their ballots and voters' pamphlets through the mail more than two weeks before Election Day.** Voters have the convenience of voting from their home or anywhere and can return their ballots through the mail (using a first class stamp) or at designated drop boxes. Washington no longer has polling places.

---

**Voting begins the day you receive your ballot and the deadline to return ballots is Election Day.** Ballots must be returned to a ballot drop box by 8:00 p.m. or postmarked by this day. Ballots will continue to be processed and counted until election certification on August 31.

---

If you do not receive your mail ballot or lose your ballot, please contact King County Elections.



## About the Top 2 Primary

Washington uses a “Top 2” system for its primary election. A Top 2 primary allows voters to vote for any candidate running in each race. The two candidates who receive the most votes in the primary election advance to the general election. A candidate must also receive at least 1% of the votes cast in that race to advance to the general election.

The Top 2 primary applies to partisan offices. It does not apply to elections for President, Vice President or Precinct Committee Officers. While there are some slight variations, elections for nonpartisan office, such as city council or judge, are conducted in a similar manner to the Top 2 primary. Generally, the two candidates in a nonpartisan race who receive the most votes in the primary advance to the general election.

You may wonder why some offices don't appear on the primary ballot. When only one or two candidates file for a nonpartisan office, there is no primary and the candidates automatically advance to the general election. For partisan offices and some judicial offices, there is still a primary even if only one or two candidates file.

Learn more about the Top 2 primary at: [www.sos.wa.gov/elections](http://www.sos.wa.gov/elections)

## Judge Position No. 2



## Michael Spearman

**Legal/Judicial Experience:**

Appellate Court Judge (2010 - present); Mediator/Arbitrator (2007-2010); Superior Court Judge (1993-2007); Attorney in Private Practice (1986-88); Defender (1983-86; 1989-93)

**Other Professional Experience:**

Machinist & Union Steward, member of IAM (1974-78); Board member: King County Bar Association (2008-10); The Defender Association (2008-09); Washington

Foundation for the Courts (2008-10)

**Education:**

B.A. Brown University (1974); J.D. New York University (1981)

**Community Service:**

Board member: CASA (Court Appointed Special Advocates for children; Seadrunar (residential drug treatment program)

**Statement:**

Judge Spearman currently serves on the Court of Appeals, where he sits on three judge panels that review proceedings from the lower courts to make sure trials are conducted fairly and according to law. He began his judicial career in 1993 as a trial judge on the King County Superior Court bench, where he earned high marks for his calm demeanor, intelligence, and impartiality. Judge Spearman retired from the court in 2007 and worked as a private mediator helping people resolve their disputes outside of the courtroom. In March 2010, Governor Gregoire appointed Judge Spearman to the Court of Appeals.

Judge Spearman would like to thank the citizens of King County for allowing him to serve on the Washington State Court of Appeals for the next six years. He considers it an honor and a privilege to serve as an appellate court judge.

**Contact Information:**

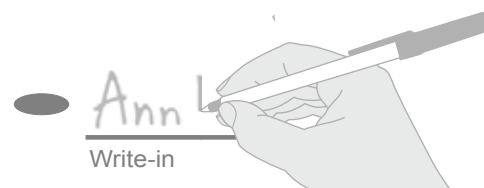
206-714-5637

spearmanforjudge@gmail.com

## Regarding write-ins

A write-in line is provided on your ballot for each race regardless of the number of candidates. You have the option to write in the name of a candidate. Frivolous write-ins, such as Mickey Mouse or Bigfoot, result in additional work and expenses to process.

You do not need to make a selection in every race for your votes to count, and write-in votes are not tallied by name unless the total number of write-in votes could make a difference in the result of the race.



## Council Position No. 2



## Greg Duff

**Occupation:** Concrete mixer driver

**Education:** King County Sheriff's Office  
Citizens Police Academy Graduate; attended  
NSCC

**Statement:** **Greg Duff is ...**

a father, grandfather, veteran, small business owner, truck driver, union member, international mission leader, church elder, community activist, planning commission member, former President of the North

Highline Unincorporated Area Council, block watch captain, Transform Burien volunteer, athlete, baseball coach, Steve Cox Memorial Field volunteer, former Union Gospel Mission job training programs manager, singer in the Blue Jackets Naval Choir, and graduate of the King County Sheriff's Office Citizen's Police Academy. Greg Duff has the perfectly well-rounded life experience to serve you well.

**Greg Duff is who we need on the Burien City Council.**

**Dear Neighbors,**

I believe we need to look out for all our neighbors. With 30 years community volunteering experience, people tell me they want more from their local leaders: open parks, community centers and libraries, better public safety, jobs and safe streets. I am running to deliver. I ask for your vote.

-- **Greg**

**Contact Information:**

PO BOX 66557

BURIEN, WA 98166

206-387-8255

WWW.DUFF4BURIEN.com



## Ed Dacy

**Occupation:** Tax Auditor Department of Revenue Retired • Riteline Tax Service

**Education:** BA Business Administration  
Specializing in Accounting Central  
Washington 1975 • Graduated Kennedy HS  
1971

**Statement: Activities:** Vice Chair of the City of Burien Parks and Recreation Advisory Board • Board Member and Treasurer of Hospitality House • Commissioner for CYO

Youth Basketball & Track for King County • Has been track announcer for Highline School District Track meets • Chairman the Pastoral Council at his church • Among many other activities

**Some things that Ed intends to work on if elected:** Making a priority for the City to put sidewalks on at least one side of the street on the safe walking routes for Elementary School Children • Designating Hilltop Park for Future Sport Fields • Establish a Dog Park in Burien • Work to attract youth and teenage oriented entertainment businesses • Opposition to the consolidation of White Center & Boulevard Park Libraries • Expansion of the Community Garden program • Explore options to close 'problem' bars quicker than currently being done

**Contact Information:**

PO Box 66346

Burien, WA 98166

206-246-5162

EdDacy@msn.com



## Lucy Krakowiak

**Occupation:** Burien Business Owner/  
Operator - Burien Massage Therapy Center

**Education:** B.Sc. Biology/minor in Chemistry,  
Secondary Education Teaching Certification

**Statement:** **Thanks** for the honor of **serv**  
**ing you** on Burien's City Council.

**Burien** has been my home for 20+ years. I've been a Burien business professional for over 15 years. **I care deeply about our community**, serving as an elected official,

high school mentor, CleanSweep volunteer, and Discover Burien member. Regionally, I serve as a Suburban Cities Association board member.

During this term, I've become **increasingly concerned** about the direction our city is heading. I feel that some actions the council has taken aren't in Burien's best interest. I have cast the lone "no" vote on several issues including additional expansion, budget, and animal control. **I continue to advocate** for public safety, a thriving business community and protecting the environment.

To continue to **champion for a better Burien** and insure a safe vibrant community, I need your support. I look forward to continuing to serve you.

**Thank you for your vote.**

**Contact Information:**

PO Box 66852

Burien, WA 98166

206-242-8378

www.electlucy.com

## Ballot stub

Remove and recycle the stub at the top of your ballot.

There is no need to keep the stub, and removing it helps us to process ballots quickly and efficiently.



Council Position No. 4



**Gordon M. Shaw**

**Occupation:** No information submitted

**Education:** No information submitted

**Statement:** A 64 year resident of this community who grew up next door to Highline High School I've served on Burien's Council for the past eight years. I support Burien's vision of a friendly City with a small-town-atmosphere, with diverse economic vitality seeking to maximize sales tax while minimizing property tax. I support efforts to

expand our economy into the Northeast-Redevelopment-Area, diversifying our economy. The annexation of North Highline is a challenge. As a private side decision maker I will look at all the numbers and impacts and will not vote for annexation unless it can be done **without** our existing residents subsidizing this effort. If the numbers do work I will support annexation. I think of that area as part of the community I grew up in. Burien deserves leaders who will work to get it right.

**Contact Information:**

16235 21st Ave. SW  
Burien, WA 98166

206-244-2457



**Bob Edgar**

**Occupation:** Corporate Education

**Education:** A.A Computer Science, B.A Earth Science, MBA Information Systems, Doctorate, Seattle University-Educational Leadership

**Statement:** My goals for Burien: a safe place to live, a vibrant city with a small town flavor and a sustainable community that supports Burien families and businesses for the long-term. The City Council needs fresh

ideas and a new perspective on the economic challenges facing our city, and as your representative, I will question the implications of any further annexations. With many years of business experience, I stand for open, honest, responsive government, sound fiscal management and robust economic development for Burien.

I am a champion for preserving and protecting Burien's environment, shorelines and neighborhoods and for representing citizens' concerns. As a Burien resident for over 20 years, I am proud of my work preserving Salmon Creek Green Belt and Seahurst Park. Board Member-Shorewood on the Sound Community and Sustainable Burien; Member-Neighbors Of Seahurst Park; Committee Member-Salmon Creek Neighborhood Plan.

Thank you for your support and your vote.

**Contact Information:**

PO Box 46274  
Seattle, WA 98146

206-734-9653  
ElectBob4Burien@yahoo.com



**Joey Martinez**

**Occupation:** Senior Network Engineer

**Education:** Some College

**Statement:** As a dedicated employee to both the City of Auburn and now the City of Seattle at City Light, I have learned the inner workings of government operations and what it takes to function effectively. I have observed areas where government excels and where government fails. My hope is to be able to use that knowledge to improve processes and

effect positive change.

If elected, I plan to use my knowledge to bridge the gap between what we desire as citizens and the government's potential to manage and achieve those desires. I am confident that my knowledge will also bring about the progress we need to lower taxpayer dollars and enhance services to the residents of this great city. I humbly ask that you allow me the opportunity to serve you on the Burien City Council.

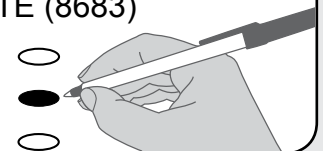
**Contact Information:**

429 S 189th st  
Burien, WA 98148

206-251-7044  
martinez3660@msn.com

**Tips for voting**

- Read the ballot, envelope and voters' pamphlet carefully
- Use a black ink pen to fill out your ballot
- Remove and recycle the stub at the top of the ballot
- Sign the oath on the back of the return envelope
- Do not put multiple ballots in one envelope
- Lost or damaged ballot? Questions? Call 206-296-VOTE (8683)



## Council Position No. 3



## Mark Koppang

**Occupation:** Sales Professional

**Education:** Bachelor's degree in Theology

**Statement:** My wife and I, along with our children, have enjoyed living in Federal Way for the last 15 years. I am proud to call Federal Way home.

As a member of the council my priorities will be:

**Promote Job Growth Policies.** With unemployment at 9% we need jobs. I will support policies that make Federal Way an attractive place for businesses to come and stay.

**Fiscal Responsibility.** Like us, our city government needs to live within its means.

**Improve Neighborhood Safety.** The cities first priority is to keep us safe.

**The Environment.** I want to see Federal Way developed and preserved in a way that leaves a legacy of **prosperity** and **beauty** for future generations.

Together we can make Federal Way even better. **Vote Koppang for Council.**

**Contact Information:**

31811 Pacific Hwy S., B-257  
Federal Way, WA 98003

253-250-8022  
koppangforcouncil@gmail.com



## Susan Honda

**Occupation:** Volunteer, Chair of the Arts Commission, Diversity Commission, Retired RN.

**Education:** University of Puget Sound, Tacoma General Hospital School of Nursing.

**Statement:** Susan Honda, R.N. is running to bring her years of leadership experience to the council. Susan will be an **effective advocate** for all citizens of Federal Way.

Susan's priorities are: Ethical accountable government, Transportation and street system improvements, Prosperous rational business climate, Responsible development of our community and Encouraging a diversity of participation.

Susan's work as a Registered Nurse and volunteer experience with PTA, schools, scouts and city commissions are greatly needed: experience such as listening to all citizen's input and concerns, fostering a collaborative environment where diversity is an asset to all potential solutions and doing the right thing. Proud to call Federal Way her home since 1979. Susan looks forward to serving the citizens of this great city with **integrity, dedication and common sense.**

**Years of experience. Hearing you loud and clear.**

**Contact Information:**

33714 - 4th Ave SW  
Federal Way, WA 98023

253-838-0734  
www.HondaforFW.com



## Roger Flygare

**Occupation:** Husband 35 years, Dad, CEO Flygare & Associates Court Reporters.

**Education:** US Army Vietnam Veteran, 1968-71, Purple Heart, Court Reporting Degree and AA Degree from GRCC.

**Statement:** "**Why Federal Way City Council?**" **First of all, I live here.** I will provide local responsible, accessible city government to FW citizens • **I am a businessman in FW.** The concerns of FW

businesses include but are not limited to traffic flow, high speed Internet access, empty storefronts and empty lots • **I play here.** We are blessed as a city of diversity. My family enjoys the local restaurants, our local parks, our local theaters and shopping. The more entertainment opportunities we create the more our city will stay family friendly • **Living Wage Jobs.** There is a lot of empty commercial space in FW. As a community, we need to invite jobs that can sustain a family • **As your city councilman,** I will search out opportunities to make FW a magnet to achieve an improving and a long lasting economic recovery in the core of our city. **I ask for your vote.**

**Contact Information:**

1715 So. 324th Pl, Suite 250  
Federal Way, WA 98003

253-929-9430  
www.vote4rogerflygare.com



## Scott M. Sparling

**Occupation:** Entrepreneur, Small Business Owner, Entertainer

**Education:** AA Degree from Green River Community College

**Statement:** I believe that City Government needs to become more accessible and responsive to Federal Way citizens and I know I can help provide that contact. I want to listen to what our neighbors have to say, and actively be part of the solution to make

us all feel heard and significant in our own city. In this way, the people's priorities are my priorities.

As an entrepreneur and small business owner, I know I can make a difference and bring new ideas to city council. I have lived in Federal Way for twenty-four years, and am raising my own family here as well. I am determined to be part of Federal Way's growth and help the city move forward and to develop in a positive direction. I think outside the box, and work hard to make a difference. I hope to earn every vote and serve our residents well.

**Contact Information:**

No information submitted



Mayor



**Dwight A. Thompson**

**Occupation:** Small Business Owner; Command Executive Officer - US Army Reserve

**Education:** Master of Social Work and Bachelor of Arts - University of Washington

**Statement:** Dwight's vision for our city government: curtail expenses, eliminate inefficiencies, and reshape the way we do business. Responsive to citizen input, he CUT expenses and voted NO to increased

taxes. As Mayor, Dwight will maintain our superior police response time; ensure essential services for our community's senior citizens; and improve road maintenance and parks. Dwight remains committed to protecting our environment for future generations.

Dwight has the management, community, and leadership experience to lead our city through these tough economic times. He has been a successful small business owner for 25 years, a longtime volunteer Scout Leader, a City Councilmember and a Deputy Mayor. Dwight served our country as an Army Colonel directing hospitals for our wounded soldiers throughout Afghanistan.

**A proven consensus builder – Elect Dwight as our Mayor.**

ENDORSED BY: State Representative Ruth Kagi; King County Councilmember Bob Ferguson; Roger Olstad; Ros Bird; Councilmember Sandy Koppenol, and many others.

**Contact Information:**

16270 Beach Drive NE 206-399-9477  
Lake Forest Park, WA 98155 www.DwightForMayor.com



**Mary Jane Goss**

**Occupation:** Businesswoman, co-manager/owner; extensive accounting, auditing, and management experience

**Education:** Villanova University, Bachelor of Science in Accountancy, Certificate in Municipal Leadership from Associated Washington Cities

**Statement: Public Service:** LFP City Council, 1998-2005. Co-President, Shorecrest PTSA; earned Golden Acorn

Award. Treasurer, 2010 "No on Prop 1" campaign.

As the first woman to serve as Mayor, I will reform city government, making it efficient and transparent. Recognizing citizens' top priorities, including public safety, I will ensure the City exercises the discipline and resourcefulness necessary to live within its means and to protect our residents – 78% of whom defeated last year's proposed levy to double City property taxes. The survival of Lake Forest Park as a residential community depends on putting a stop to unwarranted tax increases.

Residents have asked for more participatory involvement and respect for diverse opinions. With your input, together we will achieve better solutions for our neighborhoods and government. I would appreciate your vote for a much-needed change in our City leadership.

**Endorsements** include LFP GOV WATCH, King County Democratic Central Committee, 32nd District Democrats.

**Contact Information:**

206-550-2376  
WWW.MARYJANEGOSSFORMAYOR.COM



**Stan Lippmann**

**Occupation:** Physicist, Politician, Telecom/ISP, Anti-Vaccine/AGW/NWO/Bilderberger Activist

**Education:** NYU 1981 BS (Physics), JHU 1984 MA, 1989 Ph.D. (Physics), UW 1998 J.D. (Law)

**Statement:** "The President is merely the most important among a large number of public servants. He should be supported or opposed exactly to the degree which is warranted

by his good conduct or bad conduct, his efficiency or inefficiency in rendering loyal, able, and disinterested service to the Nation as a whole. .... Any other attitude in an American citizen is both base and servile. To announce that there must be no criticism of the President, or that we are to stand by the President, right or wrong, is not only unpatriotic and servile, but is morally treasonable to the American public. Nothing but the truth should be spoken about him or anyone else. But it is even more important to tell the truth, pleasant or unpleasant, about him than about anyone else." President Theodore Roosevelt. May 7, 1918.

*It's time for us to restore the Republic from the ground up.*

**Contact Information:**

16203 41st Ave NE 206-372-7594  
Lake Forest Park, WA 98155 www.stanlippmann2011.com

**Your online voter guide**

Use "Your Voter Guide" on the King County Elections website to check your registration information and look up the races and measures that will appear on your ballot.

**Your Voter Guide**

Find your registration status and view your sample ballot

First name  Last name

Date of birth (MM/DD/YYYY)

Search by address

[www.kingcounty.gov/elections](http://www.kingcounty.gov/elections)

## Council Position No. 2



## Bob Sterhoff

**Occupation:** Real Estate Development and Construction

**Education:** BA University of Washington

**Statement:** Kirkland is an historic, vibrant and diverse place to live, work and play. Our quality of life and community character must be balanced while being fiscally and socially responsible. I am a 54 year resident of the Kirkland area with a diverse business background and 25 years of civic

and community service. I represent Kirkland citizens by bringing unique and creative perspectives to the Council. I Chair the Public Safety and Annexation Committees and serve on the Economic Development Committee, Executive Board of the Puget Sound Regional Council, Suburban Cities Association, Enterprise Seattle and Norcom. I serve on the Regional Transit Committee, Regional Transportation Priority Work Group and Jail Advisory Group. I Chair the Growth Management Policy and Growth Management Planning Council Suburban Cities Caucus. I look forward to continuing to serve all citizens, residents and businesses that care about Kirkland today and for the generation's that follow.

BobSterhoff.com

**Contact Information:**

255 7th Ave S.  
Kirkland, WA 98033

[www.BobSterhoff.com](http://www.BobSterhoff.com)



## Jason Gardiner

**Occupation:** Wide Area Network Architect

**Education:** US Navy, Foothill College

**Statement:** With the annexation and addition of over 35,000 people into Kirkland I want to be able to help the newly annexed areas, from Kingsgate to Finn Hill and North Juanita, participate fully in the city's government decision-making process. I am concerned that with this massive population and land growth and the current economic recession,

services such as police, fire and medic coverage will be cut in either the newly annexed area or within the old boundaries of Kirkland or both. I want to ensure that city services are available to every citizen of Kirkland equally. I want to be your open door into the city council allowing residents to ask questions and suggest ideas along with providing timely feedback on issues. I am committed to ensuring Kirkland maintains a sustainable budget as we work through the transition to becoming the 12th largest city in the state.

**Contact Information:**

11410 NE 124th St #177  
Kirkland, WA 98034

425-283-9348  
[www.gardiner4kcc2.com](http://www.gardiner4kcc2.com)

## Chuck Hinson

No information submitted

No photo  
submitted

# Track your ballot packet online

Track the progress of your ballot packet at several points using the Ballot Packet Tracker on the King County Elections website.

- Track point #1: Your ballot packet was assembled by King County Elections and mailed to you
- Track point #2: King County received your completed ballot packet
- Track point #3: Your signature was verified and your ballot proceeded to the counting process

Council Position No. 6



**Martin Morgan**

**Occupation:** Self Employed, working primarily in the greater Kirkland area

**Education:** Eisenhower High, United States Navy with extended service to develop new supply protocol, Fire-fighting School

**Statement: Seeking Accountability for the Citizens and the Health of our Community**

...  
From the first time I set foot in Kirkland 34 years ago, I new it would be a wonderful

place to live and raise a family. Sharon and I have been married for 23 years, raising our two children here, and enjoying Kirkland’s many amenities.

Although a wonderful place to live, the lack of accountability in city government keeps our city from prospering and being all it can be. We need to elect a council that seeks accountability and stops civil retribution. We need to work toward an elected mayor to insure accountability of city management.

**I am committed** to open, transparent government with easy access for all.

**I am committed** to fiscal responsibility for a healthy community.

**I am committed** to funding public services, preserving neighborhood character and promoting a healthy business environment.

**Vote for Martin Morgan.**

**Contact Information:**

PO Box 2181  
Kirkland, WA 98083

425-822-4965  
martinmorgan77@gmail.com



**Dave Asher**

**Occupation:** Retired Army Lieutenant Colonel & CFO UW Educational Outreach

**Education:** MS, (4.0 GPA) Logistics Management; BS, (with honors) Business Administration

**Statement:** We have a great city - now, 12<sup>th</sup> largest in Washington. **Our community has amazing energy and passion to build a great future together.** I hope to make the most of the fresh opportunities, and with your

help, to face our new challenges honestly and responsibly.

**Our first priority** is to maintain the effectiveness and responsiveness of our police, fire and emergency medical response. **Running a close second** is ensuring city government upholds the long tradition of being professional and responsive while maintaining fiscal discipline.

**A great city runs on effective partnerships** between government, citizens and business. As a former neighborhood association chair, I value these organizations and listen closely to neighborhood residents. We can become a more efficient and nimble government, despite today's economic challenges, by leveraging technology and nurturing the health of our businesses and neighborhoods.

**Endorsements:** many community leaders, Washington Conservation Voters, Sierra Club, Cascade Bicycle Club

**Contact Information:**

13003 NE 98th Place  
Kirkland, WA 98033

425-681-3283  
www.daveasher.org



**James A. (Jim) Hart**

**Occupation:** Professional Land Surveyor

**Education:** Attended Washington State University

**Statement:** As a former Houghton community council member, Rotary president, and current member of the LSAW (Land Surveyors Association of Washington), I have an extensive knowledge of Kirkland and its neighborhoods. Being a long time Kirkland business owner, Jim Hart and Associates,

LLC – professional land surveyor, I have seen every square foot of land in both the new and old areas at one time or another.

As a City Council Member, I will welcome the new neighborhoods. The word annexation bothers me. I see this process as a merger of great areas into one City, Kirkland; with many neighborhoods that can retain their individuality. I will work with all of Kirklands residents for a smooth transition.

**Contact Information:**

220 6th Street  
Kirkland, WA 98033

425-822-4171  
www.jimhartassoc.com

**What if I receive another person’s ballot?**

If you receive a ballot addressed to someone else, do not vote using that ballot. Mark the ballot “Return to Sender” and put it in the mail.

Contact Elections for a replacement ballot.

The name on the envelope is used to verify signature with the signature in the official voter registration file for that voter.

## Council Position No. 3



## Les Thomas

**Occupation:** Retired Gemologist/Appraiser

**Education:** MBA from UPS, BA from UW and CGA from American Gem Society

**Statement:** Over the past eight years, it has been my incredible opportunity to serve the citizens of Kent as your City Councilman. Some of the many accomplishments include: the building of Downtown Station, ShoWare Center, Town Square Plaza with the Rotary ball, the addition of 25,000 new residents

with the annexation of Panther Lake and the formation of over twenty two "Neighborhood Councils". I am especially proud of the reduction in residential taxes from \$2.36/\$1,000 of your assessed property valuation to \$1.48/\$1000...yet more needs to be done! With your help and your vote, it is my pledge to continue my focus on lessening our tax burdens. After all, government should also have to live within its means. Along with reducing taxes, it is my goal to complete the unfinished garage in downtown and keep the promise to replace the soccer fields that were removed when ShoWare Center was constructed.

**Contact Information:**

PO Box 568  
Kent, WA 98035

253-854-3623  
lthomas370@aol.com



## Nancy Skorupa

**Occupation:** President and CEO of Renaissance Yarns, LLC

**Education:** Associate of Arts - Highline Community College

**Statement:** Prices of gasoline and other essentials are soaring. Families are struggling in the slow economy. This is no time for the government to raise taxes. But when taxes were over-collected, they were irresponsibly put into the general fund – instead of being

used to decrease the tax burden on families and businesses. As a small business owner, I know that small businesses are the heart of our community and the key to our city's future prosperity. Promoting economic growth is vital to create new jobs for the people of Kent. I'll be a new, fresh voice on the city council. I know that you deserve fiscally responsible stewardship of your tax dollars and elected officials who respect and are answerable to the will of the voters.

**Contact Information:**

417 Ramsay Way, Ste 109  
Kent, WA 98032

206-909-9272  
http://nancyjskorupa.com



## Jim Bennett

**Occupation:** Retired

**Education:** Kent Meridian High School, Napa College, Renton Vo-Tech

**Statement:** Jim Bennett has been a resident of Kent for over 50 years. He has a **personal commitment to the growth and quality of life** for the citizens of Kent. He will bring a fresh outlook to our community along with 7 years of previous **Kent City Council Experience**. His **proven leadership**

**skills in both local business and the community**, provides a strong **conservative** voice that can be counted on to work towards **reduced taxes and more efficient city services**. This includes **repair of our roadways and strengthening of our community's crime prevention**.

Jim had great concerns with the recent controversy over the regionalization of the fire department funds and will ensure that our **tax payer dollars will not be misallocated again**.

Jim Bennett will work tirelessly towards the overall improvement of our city as a dedicated and committed member of this community.

**Contact Information:**

10216 SE 256th St. Ste 103 PMB 396  
Kent, WA 98030

206-595-0199  
jrb108@juno.com

# Returning your ballot early

Return your completed ballot as early as possible.

Not only will more results be available to report on election night, but we'll have more time to connect with you if we have any difficulty verifying your signature. Returning ballots as early as possible also helps us save tax dollars by keeping elections costs down.

You can return your ballot through the mail or at a ballot drop box as early as the day you receive it!

Council Position No. 5



**Charles Lambert**

**Occupation:** Local Kent Business Owner

**Education:** No information submitted

**Statement:** Charles Lambert has been a successful business man for over 35 years, and is currently a business owner in Beautiful Downtown Kent. Being an involved member of our local community, Charles has earned a strong reputation as a man with honesty and integrity; something he feels is missing from the current Kent City Council. If elected to

Kent City Council Seat #5, future councilman Lambert promises to bring back honesty and integrity through transparency.

His top priorities are keeping tax liabilities low, working with local law enforcement to improve our community's security and increasing educational opportunities for our future generations.

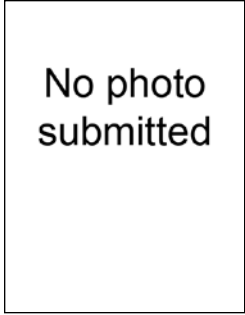
A vote for Charles Lambert is a vote for a someone that believes the City of Kent's strength will come from listening to the diverse people who live and work within our community. Together we can make a difference!

**Contact Information:**

Kent, WA 98030

253-205-6935

charleslambert56@yahoo.com



**Debbie Raplee**

**Occupation:** Staff Analyst

**Education:** No information submitted

**Statement:** These past four years have brought many changes to Kent. As a member of the Citizens Committee and Design Committee, the ShoWare Center successfully opened in Kent. As Council President, I improved the budget process to allow council members to meet with each department manager to discuss their needs

for the upcoming year. This was a huge change in the budget process! We are now the largest city in south King County due to the Panther Lake annexation. I will continue to strive for transportation improvements. I believe good stewardship of your tax dollars is imperative to Kent remaining an affordable and enjoyable place to live. I will continue to make the investments necessary to ensure our community is safe and well maintained. Thank you for the opportunity to serve you, it has been an honor. With your vote, we can continue our efforts together for the City of Kent.

**Contact Information:**

621 Marion St

Kent, WA 98030

253-850-1934

ldraplee@msn.com



**Gwen Allen**

**Occupation:** Independent Sales Broker; Chamber Board Member

**Education:** Graduated from Leesburg Sr. High; attended Southern University

**Statement:** Gwen has lived in the state of Washington for 40 years. Away from her home and family in Florida, she made her way through life, raised children and experienced careers which have served to instruct and prepare her for this position . Gwen is

honored to have another opportunity to serve and give back...Kent is her home! Working with our local businesses, daily, gives Gwen a greater appreciation for their concerns. Gwen will work to make sure "their voices are heard" in our region.

Gwen will represent "ALL" of our citizens! She will take what she hears from the communities and engage in sustainable solutions for our residents. Establishing better sources and resources for our young citizens to participate in the process of living, learning, working and enjoying what Kent has to offer, in a safe, secure and connected environment. OUR future is her focus.

**Contact Information:**

10605 SE 240th St.PMB #137

Kent, WA 98030

253-486-9029

gallencarston@gmail.com



**Bill Boyce**

**Occupation:** Human Resource Generalist

**Education:** B.A. Business

**Statement:** My name is Bill Boyce and I am running for Kent City Council Position #5. Our family has lived in Kent for 28 years. I am currently a 23-year Boeing employee working within Human Resources. I believe it's my civic duty to serve and make Kent a better place, while being fiscally responsible and living within our means.

I have served 16 years on Kent School District Board of Directors, with four terms as Board President. I am a Past President of Kent Sunrise Rotary Club and served 13 years as Criminal Justice Training Center Commissioner.

I want to be your advocate for our diverse community, for small business, and for police. Working together we can ensure our city is a safe, productive, and fun place for all, from children through senior citizens as well as business and community members. I ask for your support.

**Contact Information:**

14310 SE 256th Pl

Kent, WA 98042

206-915-0930

wboyce5@comcast.net

## Council Position No. 7



## Dana Ralph

**Occupation:** Medical Accounts Receivable

**Education:** Everett and Green River Community College

**Statement:** The heart of my candidacy is summed up as: **"Putting Kent First"**.

**\*Building a sense of family and community safety** by continuing to support our nationally-accredited police and fire departments and award-winning parks programs. **\*Promoting economic development** by supporting the

business community's efforts to bring employment opportunities to Kent. **\*Focusing on improving core infrastructure**—streets, sidewalks, and public transportation—through improved maintenance and prioritized development.

Experience as a business owner, community volunteer, wife and mother uniquely qualify me for being an effective Kent City Councilmember. I understand the importance of fiscal responsibility. Volunteer work has shown me that the combined efforts of many groups working with city government result in the completion of projects that enhance our community.

Community involvement that has prepared me to serve as a policy maker: \*Chair, Land Use and Planning Board \*Transportation Master Plan \*Chair, Kent Arts Commission, \*PTA \*Kent Kiwanis \*Kent Chamber of Commerce

**Contact Information:**

PO Box 6042  
Kent, WA 98064

253-332-0760  
www.danaforcouncil.com



## Michael S. Sealfon

**Occupation:** Retired

**Education:** PhD Ohio State University, MS Univ of Tennessee

**Statement:** An 18-year resident of Scenic Hill, he holds a doctorate in clinical chemistry from Ohio State. He is a retired Army Colonel and a Vietnam Veteran. He was the MLT program director, Renton Technical College and Technical Director for Labcorp, formerly of Kent. Currently community service activities

are his priority. He is a pilot with the Coast Guard Auxiliary; a member of the Kent Regional Fire Authority Citizens Advisory Board; serves with the Kent Communications Support Team, Kent-4-Health program, and the American Legion Kent #15. Michael is proficient with emergency management operations, in managing budgetary priorities, dealing with diverse groups, and public relations activities. *"From what I have seen politically and economically across this country, it is now time for every citizen to become involved in the governing process."* *"I wouldn't run for this position, if I didn't think my skills couldn't contribute to the continued growth of Kent."*

**Contact Information:**

162 Olympic Way  
Kent, WA 98030

253-850-7515  
wa2ocg@aol.com



## Suzanne Smith

**Occupation:** Mom; Community Leader; Director, Federal Way School Board

**Education:** Associate of Science, Veterinary Technology, WCCC, 1980; graduate, Federal Way Chamber, Advancing Leadership Program, 2005

**Statement:** I bring community leadership and passion to my top priorities of public safety, fiscal responsibility and economic development. Through my involvement with

government, education and citizens groups I have developed positive relationships with city and state leaders.

**Community Leader:** Over 16 years in PTA; appointed to multiple advisory committees for the *Federal Way School District* including, Parent Partnership, Budget, Boundary, Construction Oversight and Art Selection; experience running multiple levy campaigns as treasurer of *Citizens for Federal Way Schools*; appointed to the *Federal Way Diversity Commission* 2005 - 2008.

**Elected Experience:** Director Federal Way School Board 2007, (*part of Kent is in the Federal Way School District.*) My husband Richard and I along with our two children have lived on Kent's West Hill for 18 years.

**I believe that thoughtful, visionary leadership is vital to the success of our city.**

**I look forward to serving you on the Kent City Council.**

**Contact Information:**

PO Box 4544  
Kent, WA 98089

253-850-8783  
www.smith-suzanne.com

# Recycle your voters' pamphlet

Once you've read your voters' pamphlet and filled out your ballot, please recycle.



Mayor



**Caleb Lewis**

**Occupation:** Student  
**Education:** Current Political Science and Theatre Arts major at Oregon State University

**Statement:** You may ask yourself, "why should I vote for a 19 year old newly out of his freshman year of college?" Little advancement of the city has gone on too long and will continue to do so if we do not get fresh and new ideas into the mix. I am young, innovative, and open to all ideas. I have lived

in Milton my entire life, I know my city's needs.

I finished my first year at Oregon State University as a walk for the crew team, President of my dorm, an intern for the Associated Students of Oregon State University, traveled to UW for Model European Union, and also went to Western Illinois University for the National Association of College and University Residence Halls, alongside also being a double major in Political Science and Theatre. I have experienced growth, improvement, and have learned from all of my endeavors

**Contact Information:**  
 PO Box 512 253-320-1865  
 Milton, WA 98354 ckln88@yahoo.com



**Debra Perry**

**Occupation:** Mayor of Milton  
**Education:** Various economic, business and art school

**Statement:** The most important thing to me is what's going on in Milton. It's where I choose to live. We have 100 years of history, and we've all seen hard times before. It's times like these that you look at every dollar carefully, and make sure that dollar is doing its best for you. That's what we all have to

do in our homes, and likewise that's what we have to do in our city. I understand my job is to represent the citizens of Milton. I also understand the beauty of taking the combined Voice of boards and commissions and putting it into action. That Voice represents you, and what you want and need. We also need strong association with the cities around us, while maintaining our unique identity. There's no city like Milton, and there never will be.

**Contact Information:**  
 PO Box 384 253-691-1095  
 Milton, WA 98354 debra@perryformayor.net



**Leonard Sanderson**

**Occupation:** Former florist & nurseryman, retired bank vice president  
**Education:** Fife High School, American Institute of Banking, Certificate of Data Processing

**Statement:** I have been a Milton homeowner 59 years and have been involved in social, civic, community organizations and City government most of this time. I personally feel a strong responsibility to utilize my years

of business and corporate management experience in supporting Milton Citizens and City.

Financial conditions are the most important issue before the City and Milton Citizens. The City should not resolve the City financial problems by just asking Milton Citizens to pay more in taxes and fees. It is time to manage the City and provide services within the current revenue available. We do not need to re-invent government, only manage our City in a more professional and efficient manner.

I have the knowledge, experience, willingness and commitment to lead our City through these challenging times. Your vote for me as Mayor of Milton will indicate you are willing to help solve this financial issue.

Thank you.  
**Contact Information:**  
 1201 24th Avenue Court, # D 253-304-1562  
 Milton, WA 98354 lensand@mindspring.com

**It pays to be informed!**

You can help us keep election costs down just by staying informed. Vote early. Read the instructions and vote correctly. Be informed.

## Council Position No. 4

No photo  
submitted

## Andrew T. Shelton

No information submitted

## Gordon A. Bisset



**Occupation:** Retired mathematician and computer software analyst

**Education:** B.S. in Chemical Engineering from the University of Washington

**Statement:** I have proven elective service as your City Councilor from 2002-2005. I served on the Council Finance Committee. I was chair of the Planning Commission from 1998-2001. I have always listened attentively and responded promptly to each citizen's issues.

I will maintain Newcastle as an outstanding residential community with sound infrastructure and a downtown that will provide improved services. I will insist that we keep Newcastle's budget balanced by spending only within our means without new taxes.

I will put your safety first; police and fire protection are fundamental. I will work to reverse years of neglecting our infrastructure; your streets and storm water facilities must be maintained before deterioration becomes a costly crisis.

I strongly support local parks and trails and utilizing the work of our volunteers.

I am a regular attendee and contributor at our Council meetings. I am currently President of the Hazelwood Community Association.

**Contact Information:**

7201 125th Avenue SE  
Newcastle, WA 98056

425-226-9345  
gdbisset@msn.com



## Frank Irigon

**Occupation:** Retired Community Social Worker

**Education:** BA and MSW, University of Washington

**Statement:** My family and I have lived in the City of Newcastle for 25 years. I have seen it grow from an unincorporated part of King County to what it is today, a city of 10,000 residents. I remember in the beginning there was a farm across the street where we lived

and around where the Safeway is now there was a pasture. Now those bucolic days are gone and our city is growing, and how it grows depends on us. We all have a vested interest in living in a Good City. I pledge that that how we're governed is transparent and accountable; that the budget reflects our priorities; and to have development without compromising the environment or our quality of life. I make this pledge to you as your neighbor and as your city councilman if elected.

**Contact Information:**

6947 Coal Creek Parkway SE #300  
Newcastle, WA 98059

425-235-4795  
frank.irigon@gmail.com

# Lost or damaged ballot?

*Spilled coffee on your ballot?*

*Threw it out with the recycling?*

*Never received it?*



If you need a ballot, contact King County Elections. You can call, email or visit the Elections office, or request a replacement ballot online.

To avoid long lines, don't wait until Election Day!



Council Position No. 5



**Mark Martinez**

**Occupation:** Contract labor and cost Accountant

**Education:** Using the GI Bill Mark earned a BA in Accounting and Economics from Seattle University

**Statement:** After ten years of service to our country in the Marines, two-tour Iraq veteran Mark Martinez wants to serve his community. He grew up, met his wife of 14 years and is raising their four children together in Renton.

His leadership and willingness to collaborate make him uniquely qualified to implement solutions in our growing community.

Mark believes citizens can make the best choices for themselves. He wants transparency in government so citizens can track their tax dollars.

His top priorities are • keeping our **Neighborhoods and Youth Safe** • protecting our **Police and Fire Departments** from across-the-board cuts • keeping **taxes low** • preserving Renton's **Historic Landmarks**

An active community member, he believes it's not about the past but about bridging the present and the future. Strengthening community safety and promoting intelligent growth will shape our vibrant city's future. Our diverse population is the real architect of that future.

**Contact Information:**

4116 NE 5th St  
Renton, WA 98059

425-301-7522  
MarkForRenton.com



**Ed Prince**

**Occupation:** Program Coordinator, Seattle Neighborhood Group

**Education:** Franklin High, Washington State University

**Statement:** With 10 years experience in community, government and neighborhood programs, Ed Prince brings the knowledge and commitment to public service we want on our Renton City Council. A husband and father, Ed chairs the Renton Planning Commission; is President/Founder of The

Next Curve; chaired Citizens for Renton Schools and served as a Renton Community Budget Advisor.

**Ed's Priorities:**

- Enhance our public safety
- Create a thriving economy by supporting local industries and small businesses to increase living-wage jobs
- Provide City services in a cost-effective manner
- Partner with the school district and Renton Technical College
- Maximize regional resources to improve Renton's quality of life

**Endorsements:**

Mayor Denis Law; Councilmembers King Parker, Terri Briere, Randy Corman, Don Persson, Greg Taylor, Rich Zwicker; Renton School Board Director Pam Teal, State Representatives Marcie Maxwell, Bob Hasegawa, Zack Hudgins and Eric Pettigrew; more at www.EdPrince.com.

I appreciate your vote. Thank you!

**Contact Information:**

PO Box 59961  
Renton, WA 98058

206-478-3802  
ed@edprince.com



**Robin H. Jones**

**Occupation:** Certified Project Manager for Boeing; Officer with U.S. Army Reserve

**Education:** Bachelor's Degree in History, University of Idaho; Master's Degree in International Relations, Lancaster University, UK

**Statement:** As a Project Manager for Boeing and a 25 year Senior Army Officer, I have the maturity, experience and leadership to work with large organizations, building consensus

and achieving results. I am not afraid to ask the hard questions, challenge what is wrong, and stand for what is right. As past Chair of the Renton City Human Services Committee I understand the issues and concerns our city faces.

As your councilmember I will maintain a safe city: providing compassionate social programs and maintaining key services to city residents, within a realistic tax model. It is essential for us to strike the right balance between maintaining a livable community and improving our economic vitality. We must attract new business and retail to generate additional city revenue.

I will serve as a new voice for our citizens, bringing fresh, objective, leadership to Renton.

Endorsed by Democrats, Independents, and Republicans alike.

Thank you

**Contact Information:**

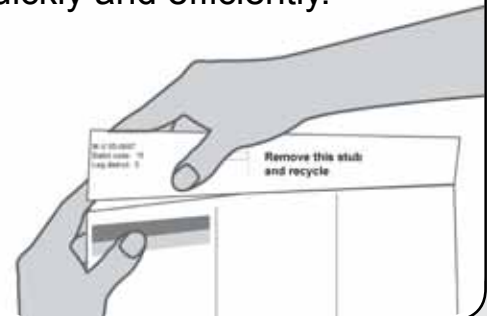
PO Box 58234  
Renton, WA 98058

206-245-4010  
www.robinjonesforrentoncitycouncil.com

**Ballot stub**

Remove and recycle the stub at the top of your ballot.

There is no need to keep the stub, and removing it helps us to process ballots quickly and efficiently.



## Council Position No. 4



## Jim Wasnick

**Occupation:** Technology Executive - Operations, Information Systems, Customer Support

**Education:** Master's of Business Administration - Seton Hall University & Bachelor of Science - Montclair State University

**Statement:** I am excited about the potential for Sammamish as we transition beyond our first 12 years as a city. As a vibrant community, we must maintain our **fiscal responsibilities**

to you the taxpayer as well as continue to provide for **infrastructure, community offerings and sustainable growth.**

We must **balance** competing priorities while respecting individual property owner's rights and the natural landscape of where we have all chosen to live.

By **listening** to all viewpoints, I assure you that I will be a voice of balance on the City Council to ensure that the City's decisions be evaluated from a **four point initiative: impact on the full taxpayer base, overall benefit to the community, individuals' rights and long-term sustainability.**

I will be very engaged as a City Councilman and fully embrace the opportunity to work for you. You can learn more about me at [WASNICKFORSAMMAMISH.ORG](http://WASNICKFORSAMMAMISH.ORG). Thank you for your support!

**Contact Information:**

22613 SE 32nd ST  
Sammamish, WA 98075

425-395-4585  
[jim@wasnickforsammamish.org](mailto:jim@wasnickforsammamish.org)

## John Galvin



**Occupation:** psychologist with emphasis on individual and organizational psychology

**Education:** Doctoral degree in psychology

**Statement:** For ten years, John Galvin has been a pro-active participant in Sammamish affairs. He has an good understanding of City history, the Growth Management Act, Puget Sound Regional Planning, the City's Comprehensive Plan, the City's finances, police and fire services, the Town Center

Plan, and City Council's performance over the years.

He has taken some "heat" for his willingness to point out inconvenient truths, particularly in relationship to the city's lack of economic development, a disastrous Town Center plan, and political, bureaucratic insensitivity for property rights.

Candidate Galvin has the academic and practical experience needed to tackle the complex social and economic challenges facing a bedroom community like Sammamish. He believes we must think globally, nationally, and regionally, but act locally.

If you want a councilman who will work for you: promise only what he can deliver; and be transparent in his thoughts and actions, vote for John Galvin.

**Contact Information:**

432 228th Avenue SE  
Sammamish, WA 98074

425-443-4357  
[voteforgalvin@comcast.net](mailto:voteforgalvin@comcast.net)



## Ramiro Valderrama

**Occupation:** Executive for Fortune 100 corporations in Management Consulting and Technology

**Education:** B.S. US Military Academy, West Point, NY; Masters Engineering Administration George Washington University, Washington DC.

**Statement:** As a resident of Sammamish, I value our sense of community and the diversity of our people, parks, and wildlife. With 25 years of international executive

experience, I bring leadership, management and technical skills to build successful approaches to find solutions to complex issues, especially in times of economic challenges and limited resources.

I have led and mobilized citizens to engage our representatives through Citizens for Sammamish, an organization formed to promote dialogue and leverage the expertise within our community. We have developed effective solutions to challenging community issues, including environmental, critical community services, finance, and transportation. If we work together, prioritize our needs and make sound choices our city will continue to thrive.

For the future, I am committed to balanced, collaborative approaches that maximize our citizens' strength. My focus is on continuing to build partnerships within our community for more effective, transparent decision-making and a culture of accountability.

**Contact Information:**

704 228th Box #725  
Sammamish, WA 98074

425-898-9777  
[www.valderrama4council.com](http://www.valderrama4council.com)

# Election results

King County Elections continues to process ballots and report results from Election Day until the election ends on certification day.

Results for the primary election will be posted once on Election Day, August 16, at 8:15 p.m., and updated on subsequent weekdays at 4:30 p.m. until the election is certified on August 31. Results are posted on the King County Elections website.



# City of Seattle

Seattle is a Charter City that has a Mayor/Council form of government. The Mayor, the City Attorney, and City Councilmembers are full-time, nonpartisan, elected officials, who are elected to four-year terms. Together the Mayor and Council are responsible for the conduct of City government. Elections for these positions are held in odd-numbered years. In 2011, five City Council positions will be on the general election ballot, and two of those positions – positions 1 and 9 – are on the primary ballot. The next election for mayor, city attorney and the remaining four City Council positions will be held in 2013.

## **Seattle City Council**

The Seattle City Council is the City's elected legislature. The nine members determine City policy through enactment of ordinances and the adoption of resolutions. The Council authorizes public improvements and expenditures, provides for public safety and health, adopts regulations, levies taxes, controls the finances and property of the City and performs many related legislative tasks. All ordinances enacted by the City Council are subject to Mayoral veto, which may be overridden by a vote of six councilmembers.

The Seattle City Charter provides that councilmembers are elected at-large to four-year terms through City-wide, non-partisan elections, held in odd-numbered years. The City Charter provides that candidates for City Council must be United States citizens and registered to vote in the City of Seattle.

## **Working for a candidate or ballot issue**

If you are interested in working on a City candidate or ballot issue campaign, please call the SEEC at 684-8500, or visit our web site at [www.seattle.gov/elections](http://www.seattle.gov/elections) for campaign contact information.

## **Making campaign contributions**

The following regulations apply to campaign contributions for City candidate and City ballot issue committees:

- Committees must report the receipt of both monetary and in-kind contributions.
- Candidate committees have a contribution limit of \$700 per contributor per election cycle. The election cycle includes both the primary and general elections. Ballot issue committees do not have contribution limits except during the final 21 days before the election, when they may not accept contributions of more than \$5,000 from any one contributor.
- Individuals who contribute more than \$100 to a committee are required to disclose their occupation, the name of their employer, and the city and state where they are employed.
- Committees may not accept cash contributions of more than \$60. Contributions of more than \$60 in the aggregate must be made by check, money order, or credit card.

For more information on campaign disclosure, visit our website at [www.seattle.gov/elections](http://www.seattle.gov/elections), or contact the SEEC at 684-8500.



## Michael Taylor-Judd

**I am the only candidate in the Primary opposed to the fiscally irresponsible Deep Bore Tunnel proposal.** Data from the State, County and City Departments of Transportation tell us the tunnel will be a certain failure without \$190 million in increased transit funding and a workable tolling mechanism. This project must be fixed or stopped.

I am running for City Council because **I am frustrated** with political leaders who support our shared values in private, but fail to stand up for us when in office. I'm frustrated with leaders who refuse to make tough decisions and deal honestly with Seattle citizens. And I'm frustrated with politicians who retreat in the face of big money and insider deals. I will fight hard for our shared values.

**Short-sighted decision making has costs.** No one can say who will pay for the necessary street improvements to handle the 45,000-plus vehicles that will flood Downtown streets as a result of the Deep Bore Tunnel. Our elected officials don't care that regular citizens cannot afford \$4 tolls each way. How much more will they cut funding for our remaining community centers, libraries, parks and **dwindling social services?**

As your Councilmember, I will advocate for an **efficient and equitable transportation system** that serves the needs of all users. I will fight for **affordable housing and thriving urban neighborhoods**. And I will promote neighborhood safety through a more **effective relationship with Seattle Police**.

I will work for quality K-12 education and equal access to tools and resources for all students and families. I strongly support the renewal of our **Families and Education Levy**.

**My background** as the manager of a non-profit healthcare foundation, and my 10-plus years of political involvement and volunteer work in Seattle have prepared me to be your Councilmember. I've walked door-to-door for health care reform, served as a PCO and local Democratic leader, campaigned successfully for LGBT rights, and won increased transit for Seattle neighborhoods.

**My campaign is about you.** I believe everyday voters are just as important as well-connected donors. I believe all citizens have the right to access their elected leaders to share ideas and concerns. **Every citizen deserves a response.** As your Councilmember, I promise you this basic respect.

To see a list of the wide range of community organizations and individuals supporting my campaign, please visit my website at [www.ElectMichaelTaylor.com](http://www.ElectMichaelTaylor.com).

I respectfully ask for your vote.

### Contact Information:

PO Box 66591  
Seattle, WA 98166

206-569-4583  
[info@electmichaeltaylor.com](mailto:info@electmichaeltaylor.com)  
[www.ElectMichaelTaylor.com](http://www.ElectMichaelTaylor.com)



## Maurice Classen

**Maurice Classen: New Leadership; Shared Values**

I am a Senior Deputy Prosecuting Attorney, small business owner, and teacher at the University of Washington School of Law. I'm running for City Council because I believe that to reach our potential as a city we need new leaders, new vision, and new ideas rooted in our shared Seattle values.

We are a forward-thinking, innovative community – on the forefront of technology, aerospace, clean energy and home to world-class research and higher education. We value our diversity, small businesses, distinctive neighborhoods, and natural environment. I'm proud to call Seattle home.

### A Personal Commitment to Victims and Families

As a prosecutor on domestic violence and sex assault cases, I have earned the respect and support of victim advocates and families. I oppose the Mayor's efforts to cut advocates for these crimes, and will work to ensure funding for these vital services.

For me, protecting crime victims—especially women and children—is personal as well as professional. I lost my mother to an act of domestic violence, and have dedicated my career—a commitment to protecting the vulnerable—to her memory.

### New Energy and a Positive Vision

On the Council, I will champion realistic solutions that set us on a path to sustainability, prosperity, and equality without slashing funding to meet budgets.

- **Jobs and Economic Development**— I will create greater incentives for emerging clean energy technologies and will coordinate zoning with neighborhood businesses. As a part owner of a small business, I know what it takes to protect jobs and build for our future.
- **Common Sense Criminal Justice**—I have offered detailed police accountability and marijuana reform measures. I'm also dedicated to restoring our neighborhood police patrols back to their proper levels.
- **Transit and Transportation Solutions**— I promise to continue our plans to expand light rail and protect Metro service, fill potholes, and move forward with regional infrastructure investments.
- **21<sup>st</sup> Century Government**—During my time on the Council I'll also focus on technology and innovation within our city government, streamlining our systems to make our city work better for its citizens.

### Maurice Classen: Leadership We Need Now!

I have a passion for keeping Seattle a place for families—a safe, affordable city with great schools, transit-friendly business districts, and strong neighborhoods.

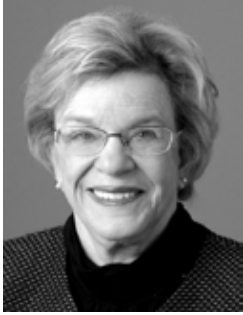
I'm proudly endorsed by the King County Democrats, 43rd District Democrats, 36th District Democrats, Judy Maleng and hundreds more!

### Contact Information:

410 16<sup>th</sup> Ave E  
Seattle, WA 98112

Tel: 206-216-3279  
Fax: 206-547-5548  
[info@classenseattle.com](mailto:info@classenseattle.com)  
[www.classenseattle.com](http://www.classenseattle.com)

## Council Position No. 1



## Jean Godden

You've known me as a longtime journalist, your City Councilmember for the past seven years, and more recently as the Budget Chair empowered to balance our city's budget. Through the toughest recession in recent history, we managed to prioritize public safety – and restore other services you value most like domestic violence prevention, community health clinics, and libraries. Unlike other communities, Seattle's budget was handled fairly and respectfully.

One accomplishment of which I am very proud is bringing jobs to Seattle. I personally negotiated with Frank Russell Company to close the deal on their move to Seattle, delivering hundreds of jobs that would have gone to Chicago if I had not been involved. **Endorsed by Martin Luther King County Labor Council and Seattle Firefighters.**

I'm an unapologetic, driven environmentalist who chaired the council committee when Seattle City Light became the first carbon neutral utility in the country. **Endorsed by Washington Conservation Voters.**

I expanded public access to city information – especially the budget – and brought our budget hearings into neighborhoods all over town. **Endorsed by King County Democrats.**

As one of only three women on the Seattle City Council, I have continually worked for women's equality by making sure homeless women and children are protected, domestic violence programs are funded, and trafficking of women is aggressively addressed. **Endorsed by Washington State Women's Political Caucus.**

I am for the deep bore tunnel and want to move on from this 10-year-old debate and fix the Viaduct. I am a friend of local business and our Chamber, but disagree with them when necessary to ensure fair taxation and fees. **Endorsed by King County Realtors.**

My commitment to you is to tell you the truth about our budget, proposed cuts, and revenue forecasts, even if they hurt. We are slowly making our way through this debilitating recession, and I will work hard not to take any more money out of your pockets unless it affects our immediate public health and safety, transportation, or the environment.

Though the recession lingers on, we need to be striving towards being a better, more inclusive city. I love this city, and as a reporter and now your City Councilmember, I work seven days a week, visiting our neighborhoods and listening to people about how we can be a better Seattle.

I'm Jean Godden ... still reporting to you.

I humbly ask for your vote.

**Contact Information:**

Phone: 206-443-1990

[info@jeangodden.com](mailto:info@jeangodden.com)

Fax: 206-382-1338

[www.jeangodden.com](http://www.jeangodden.com)


## Bobby Forch

I'm running for Seattle City Council because our city government needs to do a better job getting results.

I started out twenty years ago as a laborer putting in parking meters and painting crosswalks. I worked my way up to become the city's public works contracting manager administering over \$100 million in public works projects. Throughout my career, I've worked to ensure equity and fairness in the city's contracting process to create more

opportunities for small and local businesses. I'm ready to bring those same values to the City Council.

My priorities have been shaped by my unique background as a small business owner and advocate, and experience working within government.

I am the only candidate who has worked within city government to create real, family wage jobs. We need to fight to ensure Seattle is always the economic engine of the northwest by working with our business leaders to ensure this is the best place in the northwest to own a business. We need to not only work with companies like Boeing and Microsoft but we need to work with our innovative smaller companies and individual small businesses too.

While some on the City Council have waffled on council oversight of our police, I've worked on a detailed plan to renew trust between our neighborhoods and our police officers. My plan includes better communication training, setting up an anonymous complaint hotline, and putting a civilian on the Firearms Review Board. You can read the full plan at [www.bobbyforch.com/police-plan](http://www.bobbyforch.com/police-plan).

I am also the only candidate with real experience working on transportation projects and will prioritize fixing potholes quickly, synchronizing streetlights and providing more transportation choices.

I've helped our small businesses. I've made city government work smarter. I've championed our city's kids. I believe I have the experience and proven record of results to hit the ground running as your next Seattle City Councilmember.

I've lived in Seattle's Central District for over twenty years with my wife and son. I've been a board member for Northwest Children's Fund and am a current member of the 37th District Democrats. I'm endorsed by King County Democrats, the 34<sup>th</sup> District Democrats, 36<sup>th</sup> District Democrats, 37<sup>th</sup> District Democrats, 46th District Democrats, Laborers Local 440, King County Councilmember Larry Gossett, Port Commissioner Rob Holland, Rep. Eric Pettigrew and Rep. Zack Hudgins. I am committed to ensuring Seattle continues to be a world-class city.

**Contact Information:**

206-853-3322

[info@bobbyforch.com](mailto:info@bobbyforch.com)
[www.BobbyForch.com](http://www.BobbyForch.com)



## Fathi Karshie

Fathi Karshie born in Ethiopia came to the US as a refugee. For most of his life he has lived in Seattle. He opted out of school at an early age in order to work and help sponsor his family left back in Africa. Though for the most part he worked as a janitor, Karshie's first job was in a factory assembling auto parts. Karshie has also owned and operated small start-up companies. Currently he owns and operates a small paralegal business. In addition to being active with various

communities, Karshie is also the Director of Global Aid Against Poverty an organization with international reach.

In the past Karshie has volunteered for various non-profit organizations in Seattle as well as in other parts of the world. Karshie sees volunteer moments as learning moments. And as a volunteer he enjoys working in the background. However, he states that Occasions do call on those in the background to take charge of leadership roles. Seattle for him is in that moment.

Karshie has traveled to and even studied in other parts of the world and believes Seattle to be uniquely situated as cultural bridge to the rest of the world. His interests in civic and political issues extend to Culture and Language. Karshie speaks six African languages.

Karshie Strongly believes that he is well placed to contribute to Seattle's vibrant and diverse cultural make up. Karshie is running for Seattle City Council to inject an independent outsider voice and to advance sustainable thriving economy, to make Seattle a better dwelling place for us all.

Karshie's holds an BA in Political Science from university and a Law degree from university of Warwick.

### Contact Information:

PO Box 46273  
Seattle, WA 98106

206-762-2434  
QARSHIE@GMAIL.COM  
www.Karshie.com



## Sally J. Clark

### Re-Elect Sally Clark: A Positive Vision

It is an honor to work for you on behalf of the city we love. Seattle has weathered the past few years better than many American cities. However, we have too many people out of work, too many vacant storefronts, and too many people in need of a meal and shelter. My priorities for the next four years will be **job creation**, building a **mobility-focused transportation system** with healthy transit, bike and pedestrian options, and

keeping **Seattle neighborhoods** not just safe, but sought after for great small businesses, parks and housing for all.

I'll work to position our city and our neighborhoods for a successful rebound by stretching tax dollars further and reprioritizing spending. I'd appreciate your vote!

### Re-Elect Sally Clark: Serving Our Neighborhoods

Seattle's acknowledged leader in serving our diverse, dynamic neighborhoods, Sally brings a commitment to listening and a focus on pragmatic solutions to the tough issues we face:

**Smart Development:** Sally strengthened the rules to curb mega-houses that dwarf neighbors in single-family areas; made it easier to remove derelict homes; improved energy efficiency in new construction.

**Stronger Neighborhood Planning:** Sally believes in community-driven neighborhood planning. The result: revitalization and investment in keeping with the character of our neighborhoods.

**Protecting what we value:** Sally believes we don't have to trade character for economic growth. She works for historic preservation and revitalization in all neighborhoods, especially Pioneer Square and Pike Place Market.

### Re-Elect Sally Clark: Protecting Businesses, Creating Jobs

Sally is committed to job creation and retention:

**Vibrant Business Districts:** Promoting development along light rail and bus routes, facilitating arts jobs, and fighting for effective transit, Sally is helping local business thrive.

**Expanding Clean Jobs:** Sally supports expansion of biotechnology and research jobs, worked to keep Children's Hospital in Seattle, and advocates for middle class jobs at our Port.

### Re-Elect Sally Clark: Protecting People

Sally has used innovation to expand and protect programs that serve the poor, our homeless neighbors and crime victims:

**Protection from Predatory Lenders:** To protect low-income people from high fees and interest rates, Sally launched a bank program that serves more than 40,000 people.

**Preserving Human Services:** Facing unprecedented cuts, Sally protected services for victims of domestic violence. Sally opened City Hall to serve as a winter homeless shelter and is the leading voice for affordable housing so families of all income levels can make a home in Seattle.

### Contact Information:

PO Box 2041  
Seattle, WA 98111

206-235-0363  
info@electsallyclark.com  
www.electsallyclark.com

## Council Position No. 9



## Dian Ferguson

### Education

- Masters of Public Administration, University of Washington
- Bachelor of Arts, History, Asian Studies, University of Puget Sound
- Leadership Tomorrow Class of 1995

### “DIAN FERGUSON: PROVEN LEADERSHIP”

Dian Ferguson is a leader who gets things done, and a former executive director of several nonprofits including SCAN-TV, the public access television station. Dian is a small business owner; the proud mom of Elliott, a recent college graduate, and worked as a senior advisor to Mayor Paul Schell. Dian served on the founding board of Town Hall, was a PTA President and is a past chair of NARAL Pro Choice Washington.

### ARE YOU TIRED OF ENDLESS PROCESS?

Are you impatient with a city government that devotes endless meetings to “listening,” and then ignores public sentiment anyway? Ten years ago, Barack Obama was an Illinois state senator, while in Seattle, we had the Nisqually Earthquake. Today, Obama is President and we’re still arguing about what to do about the Viaduct. It is incredible that it has taken *ten years* to decide how to replace a viaduct.

Are you tired of process that wastes time and costs money at the expense of efficiencies and basic needs being met? Dian will listen...to *all* Seattleites...and then she will act in a timely manner not bogged down by process.

### A FOCUS ON WHAT MATTERS

Job creation...public safety *and* real police accountability...affordable housing for those making under \$50,000, not favors for developers cashing in on tax breaks under the guise of affordable housing...maintaining a safety net in social services...better use of city education dollars...a business climate where small businesses can thrive...transportation solutions based on moving people and goods...Dian Ferguson will provide a desperately needed voice on city council for Seattleites who can barely afford to live in Seattle, whose kids are not achieving academic success and for those who continue to remain unemployed. In the middle of the worst recession of our lives, the Seattle City Council should have a committee focused on bringing jobs here! Seattle continues to miss opportunities and is failing to reach our potential as a great city.

### TIME FOR A NEW VOICE!

Endorsed by King County Council Chair Larry Gossett, Seattle School Board member Betty Patu, former City Council members Judy Nicastro and David Della, former state legislator Dawn Mason, Tsuguo “Ike” Ikeda, Lembhard Howell, Jeanne Legault, and thousands of citizens wanting to be heard.

### Contact Information:

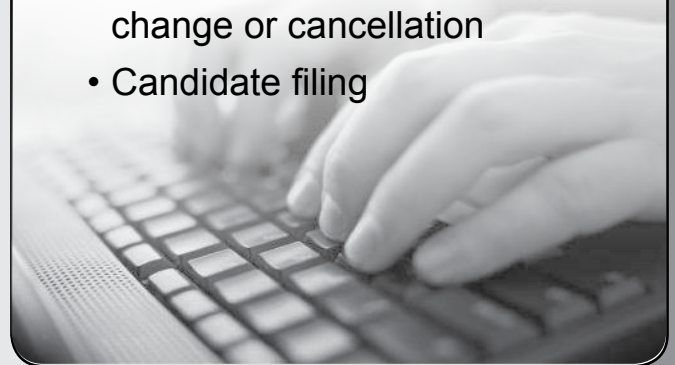
PO Box 22867  
Seattle, WA 98122

206-478-4471  
www.DianFerguson.com  
info@DianFerguson.com

# Elections information at your fingertips

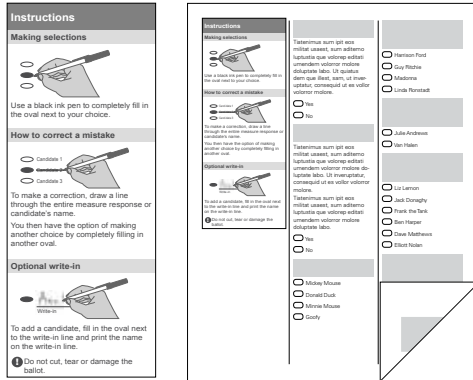
Visit [www.kingcounty.gov/elections](http://www.kingcounty.gov/elections)  
for information and tools:

- Register to vote
- Update your address
- Request a replacement ballot
- Customized voter guide
- Track ballot progress
- Print forms for voter name change or cancellation
- Candidate filing



# How to vote by mail

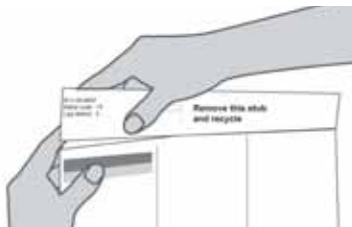
- Carefully read and follow the instructions on the ballot and in the voters' pamphlet.



- Read your entire ballot, front and back, before filling it out.
- Use a black ink pen.



- Remove and recycle the stub at the top of the ballot.



- Sign the oath on the back of the return envelope.



- Return your ballot through the mail (using a first class stamp) or at a ballot drop box.

**!** Make sure to return your ballot by **August 16**, the Election Day deadline.



# Your signature verifies your vote

Sign the oath on the back of your return envelope before returning it. Take your time and sign carefully.

Before any ballot is counted, state law requires that specially trained Elections staff make sure the signature on the ballot envelope matches the signature on file with your voter registration. If you forget to sign or if the signatures don't match, the Elections department cannot count your ballot. If this happens, Elections staff will contact you to take care of the issue.

**Sign and date below**

*Jane Doe* 8/9/11  
signature of voter (required) date  
janedoe@gmail.com  
email or phone number (optional, in case there is an issue with your signature)

**Read the oath**

I do solemnly swear, or affirm under penalty of perjury that I am:

- A citizen of the United States,
- A legal resident of the state of Washington,
- At least 18 years old on election day,
- Voting only once in this election,
- Not ineligible to vote due to a felony conviction, and
- Not disqualified from voting due to a court order.

It is illegal to forge a signature or use another person's ballot. According to state law, all qualified, attempting to vote more than once, or falsify voting. The oath is a felony punishable by a maximum imprisonment of five years, a maximum fine of \$10,000, or both.

**Information about your signature**

Before any ballot is counted, state law requires that specially trained staff make sure the signature on this envelope matches the signature on file with your voter registration.

A power of attorney signature is not valid in Washington. (See the process of voting.)

**Sign and date below**

*Jane Doe* 8/9/11  
signature of voter (required) date  
janedoe@gmail.com  
email or phone number (optional, in case there is an issue with your signature)

If you are unable to sign, make a mark in the signature area above. Have your mark witnessed and signed by two people below.

signature of witness 1 \_\_\_\_\_ signature of witness 2 \_\_\_\_\_

**This envelope is only for:**

US43312 41  
1111 SAMPLE AVE S  
BELLEVUE, WA 98011  
Election Day: August 16, 2011

## We've moved, have you?

Did you know that when you move you need to update your address with King County Elections?

You can update your address online, by phone, or in person.

### Phone:

206-296-VOTE (8683)

1-800-325-6165

TTY Relay: 711

### Online:

[www.kingcounty.gov/elections](http://www.kingcounty.gov/elections)

### Mail or in-person:

919 Southwest Grady Way

Renton, WA 98057



## Council Position No. 3



## Othman Heibe

**Occupation:** Cab driver

**Education:** Pursuing my B.A. as a full-time student at the University of Washington; Highline Community College

**Statement:** I was born in Somalia. Years ago I was forced to flee a corrupt government and an environment of poverty and war. The United States lent me a hand, responding with warmth, opportunity and citizenship.

The best way I can repay is through public service.

Studying Political Science at the UW, I've learned that the gift of Democracy should never be taken for granted.

As a taxi driver, I get unusual opportunities to talk – and listen – to many people. I've learned that despite our age, religion and diverse backgrounds, we all want the same things; safe neighborhoods, a clean environment, and opportunities for our children. We want government we can trust; government that spends wisely.

The Council has seven positions. I bring a unique perspective.

I hope it's possible that one position could go to someone like me.

With energy and desire to give back, I ask for your vote.

**Contact Information:**

P.O.Box # 68159  
SeaTac, WA 98188

206-346-4647  
[www.facebook.com/othmanheibe](http://www.facebook.com/othmanheibe)



## Terry Anderson

**Occupation:** No information submitted

**Education:** Oregon College

**Statement:** Terry is SeaTac's only remaining original council member. Terry's extensive community experience is matched by her knowledge of issues surrounding the City of SeaTac. She knows land use, zoning and transportation issues as well as anyone running. She served on the group that advised county planners on the update of

the SeaTac portion of the Highline Community plan, and is a sensible guide for area growth. She is articulate and has the ability to keep things moving. "Considering issues on their merits should come first."

Terry grew up in the Highline District where she and her late husband, George, raised their son Scott. "SeaTac is the cog in the middle of the regional wheel" and is the first place people see when arriving at the Airport. "We should always strive to be a good memory while keeping in mind our citizens come first. That is why we are here."

**Contact Information:**

3745 So. 188th St.  
SeaTac, WA 98188

206-244-3516  
[taamayor@aol.com](mailto:taamayor@aol.com)



## Sandra Cook-Bensley

**Occupation:** Accounts Receivable Coordinator, Continental Mills, Inc.

**Education:** Attended Lane Community College (Oregon)

**Statement:** SeaTac's citizens deserve a city government that is transparent, responsive, accountable for results and fiscally responsible. I have dedicated considerable time learning about the City and its needs. I regularly attend City Council and

other meetings, I have been reading agenda bills and contracts, and am eager to study the issues. As a new councilmember, I can hit the ground running.

I will bring a unique combination of business acumen and common sense to all City Council issues. I will do my homework and due diligence on agenda items and not "rubber stamp" major decisions.

I will seek-out the concerns of you, the citizens of SeaTac, and be responsive. I will bring fresh perspective to the Council on issues such as property rights and improving our business climate.

Vote for Sandra Cook-Bensley, for accountability, fiscal prudence, and addressing the concerns of SeaTac's citizens.

**Contact Information:**

3425 S. 176th Street, Suite 159  
SeaTac, WA 98188

206-248-3031  
[sandra\\_bensley@yahoo.com](mailto:sandra_bensley@yahoo.com)

## Why are there ballot measures and races in this pamphlet that are not on my ballot?

Don't worry, your ballot is correct. Your ballot includes the measures and races on which you are eligible to vote and reflect the district in which you reside. The voters' pamphlet may cover several different districts and as a result, some items in this pamphlet may not appear on your ballot.

You can find all the measures for which you are eligible to vote by using the online voter guide at [www.kingcounty.gov/elections](http://www.kingcounty.gov/elections).

Council Position No. 6



**Ruth Sanoy**

**Occupation:** Retired caregiver and past school teacher 15 years

**Education:** Elementary Teacher Certificate, BS in Education, and Modern Office Skills Certificate from SOIC.

**Statement:** At my age of 80, and married for 60 years with 8 children, 14 grandchildren, and 5 great grandchildren my experience in dealing with people will really help me to push my projects that will be beneficial for the

progress of the City of Tukwila. My Spirituality is also is an asset in doing the best in supporting any program. I can put myself in any program that can make children grow better citizens of tomorrow.

2003 IDIC Queen, FCS Mrs. Luzon, and member of Filipino Community Center and IDIC. She became a model teacher in the Philippines.

**Contact Information:**

15156 65 Ave So #1009  
Tukwila, WA 98188

206-242-0029  
ruths206@gmail.com



**Kate Kruller**

**Occupation:** Internet Technology Project Manager

**Education:** MBA – Engineering/Technology Management; BA - Communications, Project Management Professional (PMP) Credential

**Statement: Kruller's Core Goals:** • Responsible city budgets • Reliable fire and aid services to all citizens • Affordable housing and safe neighborhoods • Improve

transportation for the people of Tukwila

**Who Kruller is:** • A Tukwila resident, citizen and volunteer for some 20 years • elected Precinct Committee Officer (11-Tuk-3128) and community organizer since 2005 • Puget Sound Access Board Member - Channel 77 • Previous small business owner 2001-2009 • Business advocate on Transportation; Regional/State Transportation professional 2003-2010 • Tukwila Village advocate • Tukwila Municipal Pool District supporter • Promoted successful Capital Levy for Technology in Tukwila schools

**Why Vote Kruller:** • Effective leader and consensus builder • 20 years of community service working to improve Tukwila • Experience finding the best solutions for people

**Share your concerns with Kruller:** Kate will listen and represent you!

**Contact Information:**

P.O. Box 69534  
Tukwila, WA 98188

206-244-1295  
www.kate4tukwila.com



**Louise H. Strander**

**Occupation:** Real Estate Management

**Education:** Foster High School; Seattle Pacific University, Bachelor of Arts

**Statement:** My family came to Tukwila nearly 100 years ago. My father served as mayor and my mother served on our school board. I want to continue this tradition of community service to make Tukwila a great place to live and raise a family.

Making sure Tukwila's Police and Firefighters have what they need to protect our safety is my highest priority. I will fight to keep Tukwila's four fire stations open, reopen the police resource center and increase police patrols to reduce crime.

Improving and protecting our neighborhoods is very important to me. Some of our neighborhoods don't have sidewalks and I want to build sidewalks to improve safety and increase property values.

We are facing difficult times and I believe my experience can ensure a bright future for Tukwila and our neighborhoods.

Tukwila's Firefighters have endorsed me and I would be honored to have your support and vote too!

**Contact Information:**

P.O. Box 88926  
Tukwila, WA 98138

206-291-6727  
www.electlouisestrander.com

**Recycle your voters' pamphlet**

Once you've read your voters' pamphlet and filled out your ballot, please recycle.



# Clarification on Seattle School District No. 1 races

In the primary, the director positions are voted on by registered voters living in the director district. In the General Election, these positions are voted at large by all registered voters in Seattle School District No. 1.

## Director District No. 1



### John Cummings

**Occupation:** Educational Consultant

**Education:** Master's Degree Special Education

**Statement:** My name is John Cummings and I am a Candidate for School Board.

The last few years have been tough on our children with a corrupt, toxic, culture that was fostered by our former superintendent and allowed by a School Board that failed to provide the vision and leadership for which they were elected. The Superintendent is gone, and now it's time for the Board to go as well, so that we can make a fresh start and get this District rolling in the right direction again.

We need to hire a new superintendent and I believe we don't have to look much farther than the District Administrative staff to find a current Seattle community member to fill the post. How refreshing it will be to have someone from this District leading this District. It makes sense for us and our children.

We also need to change this obsession we have developed for testing our kids so much. The MAP is expensive, and completely unnecessary. I will move to have it eliminated, thereby freeing up time, space and sorely needed money.

Finally, let's start treating our teachers with the respect that they deserve. As a former teacher I know that the job has become increasingly unmanageable. The criticism has become ridiculous and needs to stop. Remember, when someone is bad mouthing our teachers, they are disrespecting our neighbors and friends.

It's time to move past the issues that held us down and once again reach for the stars.

**Contact Information:**

PO Box 27397  
Seattle, WA 98165

206-271-0949  
cummingsforschoolboard.blogspot.com

## Director District No. 1



## Peter Maier

**Occupation:** Consumer rights attorney; small business owner

**Education:** Attended Seattle Public Schools. Graduated from Nathan Hale High School. Oberlin College. Harvard Law School

**Statement: Responsible leadership.** It has been an honor representing District One's families and children on the School Board for the last four years. These are challenging times for all of us who care deeply about public

education. It requires **calm, responsible leadership** to manage the budget cuts from Olympia, the changes in our District's leadership, and to keep the focus on helping every student achieve her or his potential.

**Making tough decisions.** I took swift, decisive action on replacing our Superintendent. We installed new accountability systems, and negotiated innovative teacher and principal contracts. These were tough but necessary decisions.

**Fighting for our local schools.** I take my responsibility to District One schools very seriously, visiting each regularly. I have guest taught middle school math and high school social studies and have visited schools District-wide. I lobbied Legislators for full funding and led three successful levy campaigns. I have been twice awarded the PTSA 'Golden Acorn' for service to our schools.

**Achieving successes.** District enrollment has increased to levels not seen since the 1990's. Advanced learning enrollment has grown, as have language immersion programs; a new high school science and technology program has been launched; our teachers are dedicated and hard working; and we have strengthened our principal corps.

**The challenges.** Much remains to be done. We must continue to strengthen schools and achieve better outcomes for children across the city. Over the next five years, 6,000 new students will enroll, and we must provide quality building spaces for them and all our students.

**Endorsements.** 46th District Democrats. King County Young Democrats. 7 City Council members. 10 PTSA Presidents. 4 State Legislators. 6 former School Board members. Many community members.

Answers are not easy! With your vote I will continue to work hard for all our children. Thank you.

**Contact Information:**

705 2d Ave #1300  
Seattle, WA 98104

206-623-2800  
www.petermaierforschoolboard.com



## Sharon Peaslee

**Occupation:** Writer/producer/director

**Education:** MA English Education New York University credentialed to teach English and Speech/Drama

**Statement:** If elected I will help transform our district's top-down culture into one that works in genuine partnership with school communities. A recent state audit found the school district to be fiscally irresponsible with "a culture of intimidation." We must end the corruption

and cronyism that has lost the district millions of dollars. I will be sure our resources are spent exclusively to help students, not hidden agendas. I will work openly and collaboratively with school communities in making decisions that impact their schools and children.

I will address these issues head on:

Stop blaming teachers for the ACHIEVEMENT GAP. We must replace programs that don't work and provide teachers with the best materials. I will push for clear and explicit texts that help all students, including those who have failed in the past.

We need highly effective REMEDIATION and equally effective ACCELERATION to be sure that the learning needs of all students are met.

We must replace one-size-fits-all with SUCCESS-FOR-ALL, offering many pathways to success so that students can pursue their own chosen goals.

We must THINK BEYOND TEST SCORES and support the full development of our schools and students. We must encourage innovative teaching and learning, drawing from resources in our communities.

I'm a credentialed teacher and have pursued my passion for education as a parent and activist. I worked with parents and legislators to improve WA math standards, adopted in 2008. In Lake Washington and Bellevue School Districts I organized the community push for better math, and we won. I also worked to bring greater flexibility to home schooling policies in Bellevue. I co-founded Fast Track Math, a non-profit after school program, and continue to be a Director. I've been a member of PTSA and have two children in Seattle School District.

Endorsements: Cliff Mass, Where's the Math?

**Contact Information:**

PO Box 27824  
Seattle, WA 98165

206-605-4744  
SharonPeasleeForSchoolBoard.com

## Director District No. 2



No photo  
submitted

## Jack Whelan

**Occupation:** Lecturer, Core Coordinator, Business Communications, UW Foster School of Business

**Education:** Boston College, BA; Yale University, MA

**Statement:** The group running the Seattle School District is out of touch with reality. It's time for the reality-based community to assert control over our kids' education.

My name is Jack Whelan. I am running for School Board Position 2, held now by Sherry Carr. Since 1986, I have been on the faculty of the Foster School at the University of Washington. My wife has taught for SPS mostly as a special education teacher since 1992. My son graduated from Green Lake Elementary and Ingraham High School.

Current district leaders have proved that they're out of touch with financial reality. They allowed millions of dollars to disappear in Pottergate and the Martin Luther King sale to the lowest bidder. They blew millions on faddish, ineffective math curricula. They allowed an inexperienced district Director to blindside an effective, straight-shooting educator like Martin Floe at Ingraham. Shall I go on?

Sherry Carr has supported establishment policies that have led to the reality-challenged scandals listed above. We need to replace her with someone who has common-sense ideas about how to deliver a quality education to all our kids.

Here's my platform:

- I will push for curricula and classroom practices that promote competency, confidence, and the ability to learn how to learn. •I will push back against tail-wagging-the-dog, high-stakes testing. •I will push for scarce resources to be allocated to classrooms rather than to consultants and administrative pet projects. •I will push back against top-down, centralized, agenda-driven micromanaging. •I will push back against the corporate-driven, privatizing, anti-union, education reform agenda.

We must insure that our students gain the knowledge and adaptive skills they need to understand the world we live in. We must insure they are prepared for the responsibilities of citizenship in a complex society.

Endorsed by Cliff Mass and 'Where's the Math'.

**Contact Information:**

9047 Burke Ave. N  
Seattle, WA 98103

206-261-2495  
jackwhelan1@comcast.net



## Terrence J. Menage

**Occupation:** Education advocate, researcher/writer

**Education:** BA; MIT; Ed.S; Ed.D.

**Statement:** I have served as a classroom teacher, assistant administrator and Head Teacher of a district wide program in the Seattle Schools; during my career I have also served as a senior faculty member for a master's in teaching program, assistant principal and principal as well as a consultant to a wide

range of schools and programs and a presenter at various educational conferences. I humbly submit my candidacy for the Seattle Public Schools Board of Directors position 2; I am ready, willing and able to serve the families and students in the city of Seattle.

The Board of Directors for the Seattle Public Schools must serve as the policymaking board that supervises the superintendent, providing the appropriate stewardship of the largest public school district in our state. Recent history has clearly demonstrated that members of the board have not appropriately set policy for the district, they defer to the principals and teachers to set policy; it has also been clear that the board has not adequately supervised the superintendent as evidenced by financial scandals and poor decision-making, and this failure in what is their paramount duty to the district is resulting in harm to the students.

We must bring new members to the board that are determined to end business as usual in headquarters; millions of dollars in taxpayer money and resources are at stake, in addition to the futures of thousands of children.

**Contact Information:**

9520 Wallingford Avenue North  
Seattle, WA 98103

206-331-8373  
mmigrant@aol.com

## Director District No. 2



## Mark T. Weber

**Occupation:** Entrepreneur

**Education:** B.A. - The Evergreen State College, MAEd - University of Phoenix

**Statement:** Our school district is at a crossroads. It is no exaggeration to say our nation's future depends on the decisions made within our public school systems in the next few years. In 1995, John Stanford came to town and started the process of turning the Seattle School District around. Through

his leadership our school district started on a path toward being a world leader in education by bringing a "business leadership approach to solving educational problems." He did not come from an educational management background. He was a retired Army General and he knew that to lead, you must set high standards, expect the best from your people and students, and hold those who did not meet expectations accountable. Unfortunately, John Stanford's life and work was cut short by cancer in 1998. However, John Stanford left behind a legacy of excellence and high expectations of our school system and our students. Today, the Seattle School District ranks 131st out of the top 258 school districts in the United States. How is it that in just 13 short years the Seattle School District has slid back into a top-heavy bureaucracy where accountability is missing and mediocrity is the expected norm? Instead of touting our nonsensical achievements, we should be hanging our heads in shame. Some of our school leaders have let down our children, the taxpayers, and our future. I do not claim to have all the answers, but what I do know is this; Education is a Team Sport and we need to get all the players on the field. I can ask the hard questions, not accept mediocrity, and never settle for the easy way out.

**Contact Information:**

621 NE 78th  
Seattle, WA 98115

206-604-6518  
www.Weber4SeattleSchools.com



## Sherry Carr

**Occupation:** Senior Manager, The Boeing Company; past citywide PTSA President

**Education:** MBA, Seattle University; BA, Business Administration, UW

**Statement:** "Four years ago, I ran for School Board energized by the belief that putting kids first in all we do is the surest path to quality schools – schools that give every child the best possible chance at success in life. That belief has driven my decision making on behalf of our

city's 47,000 students and given me courage during challenging times and tough decisions."

**Sherry Carr: A Record of Accountability and Performance**

A parent of two Seattle Schools students, Sherry was an active PTSA leader and school levy campaign co-chair before her election to School Board. Her experience as a Boeing senior finance leader brings critical financial and managerial expertise to the Board. She has led the development of a new and **stronger oversight and governance structure** for our schools.

Sherry and her Board colleagues instituted a **neighborhood-based student assignment** plan that cuts costs and promotes **student achievement**; negotiated **landmark agreements with teachers and principals** regarding performance evaluation; developed **school and district "report cards"** to improve **accountability**; instituted curriculum changes to ensure **more equitable access to high quality education**; provided new **advanced learning opportunities**; and **prioritized classrooms and reduced central administration** through four years of budget shortfalls. These accomplishments benefit *all* students.

**Let's Keep Sherry Carr Working for Kids!**

*"Despite deep statewide education cuts and local challenges that have tested us as a community, I am immensely proud of the steady and substantial progress we've made. We are well on the road toward schools where excellence is expected and all students achieve at high levels. I appreciate your vote."*

Endorsements include: Women's Political Caucus, King County Young Democrats, education advocates Lisa Macfarlane and George Scarola, state legislators Scott White and David Frockt, City Councilmembers Burgess, Clark, Conlin, Godden and Harrell, PTSA leaders and parents throughout Seattle.

**Contact Information:**

P.O. Box 30732  
Seattle, WA 98113

206-914-6790  
www.carr4kids.com

## Director District No. 2



## Kate Martin

**Occupation:** consulting services related to planning, design & construction

**Education:** 1979, Bachelor of Landscape Architecture, SUNY College of Environmental Science & Forestry, Syracuse, NY

**Statement:** Fixing Seattle Public Schools (SPS) is essential to the future of our city. Whether or not you have children, I'm sure we agree that integrity, solid academics and financial responsibility must become the words

we use to describe SPS.

I'm a concerned parent, a professional planner and a seasoned problem solver with a long history working to make Seattle a better place for people, especially children.

Researching education policy at theseattlejournal.com and navigating my two sons through SPS tell me that we need to start doing what works, not what special outside interests dictate.

These are my priorities:

**Do more with less.** I will channel the resources we have into classrooms, not the super-sized ineffective central bureaucracy.

**Put the public back in public schools.** I will welcome the voice of families which has been silenced by special outside interests.

**Challenge every single student.** I will replace the one-size-fits-all approach with one that fully serves top achievers, kids in the middle and at-risk kids so that every student can achieve their personal best.

**Use proven strategies.** I will ensure that every educational move is a winning one. I'll rely on facts and research-based information for guidance, not the business-as-usual politics that brought us expensive failures.

**Eliminate rubberstamping.** I will keep a good eye on SPS so we don't sell our buildings for pennies on the dollar, adopt unsound textbooks, reward poor performance, put temps without credentials in classrooms or mismanage bond and levy money.

**Offer multiple pathways for students.** I'll introduce options so that every student has a fair chance at success in school and in life.

I would be honored to receive your vote. Thank you.

Recommended by the endorsement committee of King County Democrats Personal Endorsement, Justin Simmons, Chair, Metropolitan Democratic Club of Seattle

Approved by "Where's the Math"

**Contact Information:**

POB 30134  
Seattle, WA 98117

206-783-6538  
<http://www.katemartinforschoolboard.com>

## Stay current with election news

How do you get your news? If you're like many King County voters, and prefer to go online for news and information, here are some great ways to keep up with the latest from King County Elections:



[www.kingcounty.gov/elections](http://www.kingcounty.gov/elections)



[www.facebook.com/KingCountyElections](http://www.facebook.com/KingCountyElections)



[www.kingcountynews.wordpress.com](http://www.kingcountynews.wordpress.com)



[www.twitter.com/kcnews](http://www.twitter.com/kcnews)



# Why we may call you

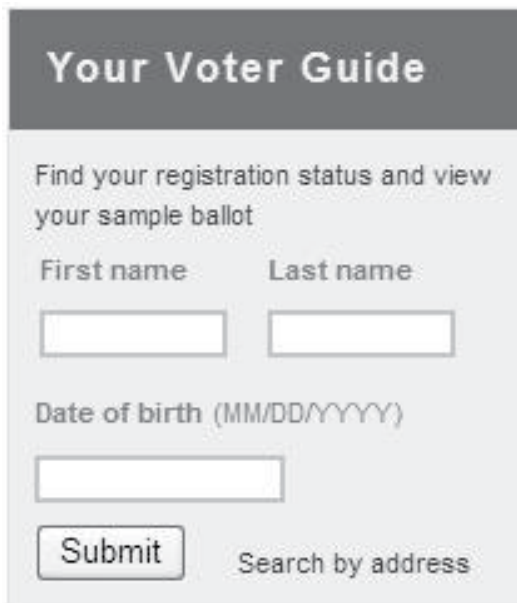
Remember the voter's oath on your ballot return envelope? You may not realize it, but your signature on this oath is critical for your vote to be processed.

If your ballot has a signature issue, King County Elections will attempt to contact you by phone and mail. Please follow the instructions and reply promptly.

The signature on your ballot envelope must match the signature on file with your voter registration. Your ballot cannot be opened and processed until the signature is matched, or "verified."

To update your signature for future elections, fill out a new registration form with your signature.

## online voter guide



The screenshot shows a web form titled "Your Voter Guide". Below the title, it says "Find your registration status and view your sample ballot". There are two input fields for "First name" and "Last name". Below these is a "Date of birth (MM/DD/YYYY)" input field. At the bottom left is a "Submit" button, and at the bottom right is a link that says "Search by address".

Use "Your Voter Guide" on the King County Elections website to:

- View your voter registration information
- See which districts you are eligible to vote in for this election
- Read about the ballot measures and candidates on your ballot

[www.kingcounty.gov/elections](http://www.kingcounty.gov/elections)

## Director District No. 3



## John Dunn

**Occupation:** Retired Teacher

**Education:** BA Gonzaga University, 1963; MEd University of Washington 1971, and 1983

**Statement:** My name is John Dunn. I have taught in the Seattle Public Schools for 45 years. I have a broad range of experience at different levels of education from kindergarten to twelfth grade. I have taught regular education and special education. I have

been inspired by the literally thousands of children who have been in my classrooms.

This experience has taught me to understand that each child is profoundly different. It has taught me that a great teacher understands the uniqueness of each of his students. The challenge for a humane system of public education is to meet each child where she is and to bring her along to her maximum potential. This is what will bring down the dropout rate and close the achievement gap.

The work of education has to be supported by reasonable class sizes and wrap-around services for the child that the teacher cannot provide by himself. The current board has paid lip service to "educational excellence" while enormous amounts of time are dedicated just to testing and while the curriculum has been narrowed to focus on what is tested.

I believe that I can make changes that will ensure that the School Board will hold the Superintendent accountable for the expenditure of funds so that students come first. I propose an on-going board policy requiring an external audit of District finances and administrative practices.

The board must also require that the District administration will communicate and engage parents, educators, staff and community on issues that affect them.

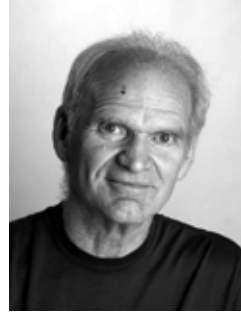
The education of children is our paramount responsibility; all else is secondary. I will work tirelessly to see that this is realized. John Dunn - The Change We Need; The Voice We Deserve.

Endorsed by: MLK County Labor Council; Operating Engineers Local 609; Seattle Education Association.

**Contact Information:**

PO Box 99395  
Seattle, WA 98139

206-407-7795  
www.johndunnforschoolboard.org/



## David Blomstrom

**Occupation:** No information submitted

**Education:** BS in ecology

**Statement:** An economic train wreck, endless war, our latest fascist pResident, environmental ruin - from the Gulf Coast oil spill to Japan's ongoing nuclear meltdown to the genetically modified food Bill Gates so adores...where will it all end? Can we fight back?

**Hell yes!**

You roll up your sleeves and start fighting in your backyard. It's called grassroots reform or, if you're really serious, *revolution*.

Children need to be protected from the Gates Foundation, First AME Church, King County Demopublicans, military recruiters seeking unemployed idiots to help rape, torture and murder Muslims and steal their natural resources, and an army of other corporate scum. And even if you don't care about children, do you want the Seattle School District to continue embezzling and wasting millions of dollars? Do you care about your property taxes?

Freedom fighters in Iraqistan have committed suicide in protecting their children from the trailer park trash and sex predators who find a safe haven in the U.S. military. So why can't Seattleites take a stand against the corporate predators that run Seattle and its increasingly privatized public schools?

I worked for the Seattle School District for sixteen years and have been a political activist since 1995. I've run for public office before; I'm the only candidate who snubs endorsement interviews with the corporate media, which include the *Seattle Weekly* and *The Stranger*.

Politics may be sleazy, but it can also be intriguing, even entertaining. If you like whodunits, detective stories and conspiracy theory - or if you're just looking for simple facts about Seattle Schools, Inc. - check out my campaign at [www.seattle-mafia.org](http://www.seattle-mafia.org). Remember: **Knowledge is power.**

In solidarity with the left-wing visionaries who are transforming Latin America, Greek protesters, and the freedom fighters sticking it to Team USA in Iraqistan and Libya, **viva la revolucion!**

**Contact Information:**

PO Box 95465  
Seattle, WA 98145

[www.seattle-mafia.org](http://www.seattle-mafia.org)

## Director District No. 3



## Harium Martin-Morris

**Occupation:** Software Development Manager - The Boeing Company

**Education:** BS in Education - Cortland State, MBA - Babson College

**Statement:** Harium Martin-Morris is the only former K-12 classroom teacher currently serving on the Seattle School Board. A national education consultant, former Nathan Hale PTSA President, MBA graduate and current Boeing software development manager, Harium

brings a combination of classroom and professional experience, parent advocacy, and business leadership to the school board.

### Independence and accountability

Harium Martin-Morris voted **NO** on the school closure plan, and was right – the district now is reopening schools. Harium **opposed** the sale of MLK Elementary School to a local church – and was right. Now the state auditor is investigating the sale. Harium insisted on accountability and produced report cards for both the district and individual schools.

### Tough decisions in tough times

After financial problems were found, Harium **demand**ed the immediate dismissal of the superintendent. He's working with the state auditor to ensure that tighter financial controls are put in place so that misappropriation of funds cannot happen again.

### Does his homework

Over the last four years, Harium worked to make a predictable student assignment plan, giving parents and students the stability that they need. Harium personally reviewed every school district policy, and reduced the number of redundant and outdated policies. He's accessible, hosting a monthly town hall in his district since 2008.

Endorsements include: Seattle City Councilmembers Tim Burgess, Sally Clark, Jean Godden, and Bruce Harrell; Lauren McGuire, President Seattle Council PTSA, Sharon Rodgers, Past President, Seattle Council PTSA; Lisa Macfarlane, co-founder, League of Education Voters.

Harium lives in the Wedgwood-Ravenna area with his wife, who teaches biology at UW. He has two children, a son who graduated from Nathan Hale High School and a daughter who is graduating from Roosevelt High School.

### Contact Information:

P.O. Box 51052  
Seattle, WA 98115

206-795-9844  
www.harium.org



## Michelle Buetow

**Occupation:** Communications/Marketing Professional

**Education:** BSJ, Medill School of Journalism, Northwestern University

**Statement:** Michelle Buetow is a respected community advocate and engaged school volunteer who is a member of two Seattle Public Schools standing committees. The mother of two young SPS students, Michelle led a multi-year effort to unite the Eastlake

neighborhood and the TOPS K-8 school community behind the innovative GeoZone admissions policy recently adopted by the Seattle School Board.

### New energy for the School Board

Michelle is an advocate of higher District standards. She opposed the "D average to graduate" SPS staff-recommended proposal. She wants to ensure that students read at grade level by Grade 3, to prioritize intervention programs to help struggling students, and to grow alternative education programs including arts, language immersion and STEM. She will work to establish a collaborative Board relationship with teachers and paraprofessionals.

### An independent voice

Michelle will be a strong board member who will insist on administration accountability to parents and communities. Michelle will work to eliminate what The Seattle Times has described as the District's "grim reputation for sloppy stewardship of tax dollars," including longstanding fiscal and operational problems identified through highly critical state audits.

### Every school a quality school

Michelle will work to provide excellent programs throughout Seattle. She will ensure more partnerships with non-profits to address the Opportunity Gap through academic and human service support. By respecting parents as core stakeholders in governance decisions, and through Board-driven community relations programs, she will involve more Seattleites in improving our schools. She will partner with government and neighborhoods to resolve school capacity challenges.

### A broad base of support

Michelle is endorsed by the King County Democrats, 43<sup>rd</sup> District Democrats, 46<sup>th</sup> District Democrats, King County Young Democrats, plus parents, educators and community leaders from across Seattle. See [BuetowforSchoolBoard.com](http://BuetowforSchoolBoard.com) for a complete list.

### Contact Information:

117 E. Louisa St., #2011  
Seattle, WA 98102

206-856-4815  
[www.BuetowforSchoolBoard.com](http://www.BuetowforSchoolBoard.com)

## Director District No. 6



## Nick Esparza

**Occupation:** Self Employed

**Education:** BS Political Science and Minor Sociology University of the Ozarks, Clarksville, AR

**Statement:** I have chosen to run for school board because it is my belief that every student deserves a quality education. One such way in which we can provide better education is through looking at how the board uses its money to fund programs. We need to use

funds for hiring teachers and staff members that can provide consistency in the schools. Use these funds to hire within the schools instead of outside consultants.

I am also against school closures. Closing schools has an adverse effect on staff, students and parents. Relocation is time consuming and costly. Closing schools has shown to be ineffective and costly. Many of the recent schools that were closed have been reopened and cost us more time and money.

For more information see my youtube page

<http://www.youtube.com/NickEsaprza>

**Contact Information:**

3810 SW Holden St.  
Seattle, WA 98126

206-446-0615  
[nickesparza@live.com](mailto:nickesparza@live.com)



## Marty McLaren

**Occupation:** Retired K12 teacher.

**Education:** BA, History, UW; Teaching Credential, Pacific Oaks College; endorsements in Math, Science, History, ECE

**Statement:** I'm Martha McLaren. My three children attended Seattle Public Schools, as does my grandson. I became a teacher in 1987 and taught in SPS from 1999-2009.

Nationwide, public education has been squeezed into a narrow definition of what education ought to provide: competence in basic skills. We Seattleites and our children have a much broader vision of what school should be. A school must engage and teach the whole child.

My teaching experience gives me insights that are currently missing on the school board. Since 1999 I've engaged with hundreds of students and families. I've talked in depth with teachers at every level, with administrators, and support staff.

I get results: I helped bring forward the vastly improved 2008 math standards and raised awareness of SPS's inadequate curriculum and texts.

On a personal level, I will work from clear priorities:

- Push for broad communication and collaboration among parents, students, teachers, community, and district staff
- Develop a free and early flow of information from the district to all interested community members
- Foster reconciliation that dispels the current culture of intimidation
- Build consensus for a humane vision of whole-child public education

On a policy level I will:

- Provide rigorous oversight of district finances to prevent further scandals and unsatisfactory audits
- Take a realistic look at programs and structures in SPS to eliminate what doesn't work
- Acknowledge successes within individual schools that can serve as incubators for other schools
- Give guidance to the superintendent about the values that Seattle's citizens want to cultivate in our schools

Together, we can bring the wisdom and guidance of the community back into the Seattle Public Schools. **Vote for Martha McLaren to reclaim our schools!**

**Endorsements: Seattle Education Association; MLKing County Labor Council; 34th District Democrats**

**Contact Information:**

PO Box 46407  
Seattle, WA 98146

206-779-6062  
[www.marty4SSD.com](http://www.marty4SSD.com)

## Director District No. 6



## Steve Sundquist

**Occupation:** Managing Director, Retired. IT and Systems Development. Russell Investment Group

**Education:** B.S. Computer Science, WSU, summa cum laude \* M.B.A., University of Chicago, Dean's Honor List

**Statement: Putting Students First**

My youngest daughter just graduated from Chief Sealth International H.S. and my wife Liann and I couldn't be more proud. I'm

inspired by the dedicated teachers and education my daughters received, and I want *all* Seattle children to have the same opportunities. I'm a 21-year resident of West Seattle, life-long Democrat, school and community volunteer, retired finance manager, and Fauntleroy Church leader where I helped build consensus for a co-location agreement with the YMCA to serve our community's youth. I am honored to serve as the current School Board President. My leadership and decision-making is guided by a simple, straight-forward question: What's in the best interest of the students?

**Increased Access, Accountability, and Academic Rigor**

We are making systemic changes to increase access, accountability, and academic rigor, and to foster greater family involvement - all in pursuit of significant gains in student achievement. We reformed the Student-School Assignment Plan so it is neighborhood-based and more equitably delivers education closer to home. We implemented a district-wide School Improvement Framework with plans for every school, including annual on-line scorecards that track progress and increase accountability and transparency. We achieved ground-breaking new contracts with teachers and principals that incorporate student results in the evaluation systems. Despite the severe recession, we balanced the budget through tough decisions that keep resources focused on the classroom where they make the biggest difference.

**All of us working together**

I take the public's trust and confidence very seriously and believe it's fundamental to delivering a quality education for every student in Seattle. Our work is far from finished. It takes all of us working together. It has been a great honor to represent you on the School Board and I respectfully ask for your vote.

**Endorsed by: King County Young Democrats**

**Contact Information:**

PO Box 21671  
Seattle, WA 98111

206-938-2967  
www.sundquist4schools.com



## Joy Anderson

**Occupation:** Freelance Writer, Editorialist and Education Advocate

**Education:** HS Diploma Phillips Academy, Andover, Massachusetts, B/A English Dartmouth College, Hanover, NH, SCCC Seattle

**Statement:** These are troubling times for Seattle Public Schools. Under the incumbent, schools were pitted against each other, reference areas gerrymandered, siblings split to different schools, and neighborhoods were

NOT equally represented. All this at the expense of our children: not only in terms of money, but also in irreplaceable time in our children's lives. Four years were squandered on a privately funded agenda gone awry.

The incumbent engineered the closure of Cooper Elementary, a debacle which not only harmed children academically, according to the District's own numbers, but also severely overcrowded elementary schools in West Seattle. I know this firsthand, as my daughter attended Cooper. School closures and the "new" student assignment plan shifted burdens onto families and produced awkward schedules, painfully crammed schools, nonsensical boundary lines, and fewer program choices.

In already bleak financial times for the District, this recent newspaper headline appeared under the incumbent's watch: "Financial scandal hits Seattle Public Schools." And, he gave the superintendent a performance raise, then fired her.

I will advocate for all neighborhoods, all schools, all parents, and all children EQUALLY. Current math programs are causing mutinies in households all over the city, further damaging many of our fragile learners. All of the children in this culturally rich city deserve the BEST that public education can offer.

I believe in public schools. I received a good education in public schools, which prepared me to earn a Bachelor's degree at Dartmouth College. I had an on-air radio career in Milan, Italy, as well as in television. For a decade I served as a counselor for at risk children in the Seattle area. My husband is from England and is an aerospace engineer. My daughter is enrolled in Seattle Public Schools.

Please vote for Joy Anderson for School Board Position Number 6.

**Contact Information:**

4742 42nd Avenue SW PMB 317  
Seattle, WA 98116

206-240-4216  
joyousanderson@gmail.com

## Director District No. 3



## Danny Peterson

**Occupation:** Educator and Pastor, Grace Church

**Education:** B.S. in Neurobiology (University of Washington), M.A. in Teaching (Seattle Pacific University)

**Statement:** As a nine year resident of Federal Way and parent of two young children, my passion is to see our school district serve its students effectively. This requires a critical focus in assuring equity in every classroom

by supporting teachers and administrators in their efforts to eliminate the achievement gap.

Having taught in both private and public schools, including Decatur High School, I realize the impact a culture of excellence can make in the classroom. As a member of the Federal Way School Board, I will support decisions that are student centered and represent the voice of both parents and educators.

By establishing **educational accountability, fiscal responsibility, and transparent communication** we can build on the strength of a common purpose that will develop each child's full potential in our richly diverse classrooms and prepare them with 21st century skills to position our community for success.

**Contact Information:**

PO Box 24561  
Federal Way, WA 98093

253-838-2789  
[www.facebook.com/askdannypeterson](http://www.facebook.com/askdannypeterson)



## Elizabeth Drake

**Occupation:** Teacher, administrator for forty years. Recently retired High School Principal

**Education:** Bachelor of Education, Brentwood, England. Education Leadership Masters Degree, Lehigh University, Pennsylvania.

**Statement:** Public Education has been a vital part of my life for the past forty years. I have been a teacher and administrator in England, Pennsylvania, and most recently, here in

Federal way. I completed my undergraduate degree in England, and my Masters in Educational Leadership at Lehigh University. Since recently retiring as principal from Todd Beamer High School I have become actively involved in the Communities in Schools organization.

I am very committed to the Federal Way Community where I have lived for the past four years. My husband, children, and grandchildren live and work in Federal Way. My commitment to student success and my background in education are a good fit for the challenges of School Board Director. As President-Elect of Communities in Schools I endorse "all students graduating poised for success," and will work to achieve this vision as School Board Director.

**Contact Information:**

31001 39th Avenue SW  
Federal Way, WA 98023

253-347-6683  
[liz4director@gmail.com](mailto:liz4director@gmail.com)



## Carrie BeSerra

**Occupation:** Stay at home mom

**Education:** Bachelor of Science, Speech and Hearing Sciences

**Statement:** I am Carrie BeSerra and my family has called Federal Way home for 12 years. I have a Bachelors degree from the University of Washington and enjoy volunteering in my church, homeowner's association, community, PTA, my children's school activities and their Girl Scout troop.

I am running for school board to make certain all our students get the best education humanly possible. I want every kid to bring their magical love of learning to school and be proud of everything they are able to accomplish there. Like all of you, I want to help our kids be the best they can be. We can accomplish this goal by making certain all our schools are effective schools. Effective schools maximize learning for all students and possess strong leadership, optimal class size, academic focus, and high parental involvement. Lets work together to help every kid realize and achieve their full potential.

<https://www.facebook.com/pages/Carrie-BeSerra-Federal-Way-School-Board-Position-3/228169177209310>

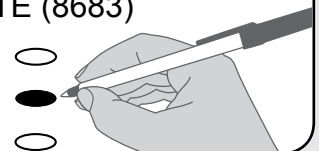
**Contact Information:**

3941 SW 317th ST  
Federal Way, WA 98023

206-799-1631  
[cabeserra@comcast.net](mailto:cabeserra@comcast.net)

## Tips for voting

- Read the ballot, envelope and voters' pamphlet carefully
- Use a black ink pen to fill out your ballot
- Remove and recycle the stub at the top of the ballot
- Sign the oath on the back of the return envelope
- Do not put multiple ballots in one envelope
- Lost or damaged ballot? Questions? Call 206-296-VOTE (8683)



Commissioner Position No. 1



Stan Isenhath

**Occupation:** No information submitted

**Education:** No information submitted

**Statement:** 35 years of my 4th generation native Seattle roots have been here in Kenmore. Following my BA from the UW Foster School of Business, I enjoyed 35 years corporate management in technology systems, responsible for 'what's next' in market development worldwide. 7 years ago I changed focus to serve locally as

an associate broker, Windermere RE. I believe the fire commission's effectiveness will depend much on listening to you, our residents, and performing within budgets. I have a track record of simply making things happen. I identify strategic goals and priorities and bring them to conclusion within available, limited resources. I know we can do this without raising more taxes. I look forward to working collaboratively with our public safety agencies.

My local community service includes Kenmore Planning Commission, Downtown Task force selection, Shoreline Management, Inglewood CC, Northshore School District, Residential Housing. Stanisenhath@windermere.com

**Contact Information:**  
No information submitted



Eric Adman

**Occupation:** Fire Department Paramedic

**Education:** BA, Economics, University of Washington, Paramedic Certification, University of Washington / Harborview Paramedic Program

**Statement:** The Northshore Fire Department is at a crossroads. Revenues are down due to annexations into the district and decreased property values. Nearby departments are considering combining operations to achieve efficiencies and savings. I bring a fresh, positive look at these issues. Providing excellent levels of service 24/7 and maintaining good response times are my goals.

I have lived, worked, and volunteered in the Northshore community for many years. As a firefighter in Bothell for 12 years, and a paramedic in Shoreline for 6 years, I know all Northshore area fire department personnel and operations very well. My volunteer and community work includes many leadership roles in charitable organizations. For example, I currently chair the Sno-King Watershed Council, and I am assisting EMPACT Northwest to establish a pilot EMS system in Haiti.

I will work hard to earn your trust and maintain high service levels from your excellent fire department.

**Contact Information:**  
7815 NE 192 St 425-780-9731  
Kenmore, WA 98028 www.wix.com/EricLAdman/firecommissioner



Don Ellis

**Occupation:** Certified Fraud Examiner, 2005 to present

**Education:** University of Washington; Business Administration; Post Graduate, five quarters. McGill University, Post Graduate, 1 year

**Statement:** Experience

Reid Institute Interviewing and Interrogation; Karrass Institute, Negotiation; Principal Representative to NORCOM, (Northeast

King County Regional Public Safety Communication Agency - 911); Chair Northshore Fire District 2008 through 2010; Chair Snohomish River Water Authority from 1995 inception to present.

Statement:

With the passage of the Benefit Charge affording the Northshore Fire Agency the ability to utilize two funding sources instead of one, the Commissioners pledged not to exceed a combined assessment of \$1.50 per \$1,000.00 of assessed value. As a candidate for re-election I stand firm on this commitment. Although assessed property valuations and agency revenues have dropped precipitously and are expected to continue to drop, I am opposed to raising taxes on all of us who have suffered reduced property values. Inter-agency cooperation, carefully reduced budgets and the use of some reserves made possible by the benefit charge can likely cover the shortfall. Thank you for your support.

**Contact Information:**  
ppd5@comcast.net

Washington votes by mail!

Washington now votes entirely by mail. All voters receive their ballots through the mail and there are no polling sites.

Make sure your contact information is up to date with King County Elections so that your ballot reaches you.

Voting begins as soon as you receive your ballot, so why wait? Vote and return your ballot before the Election Day deadline.



# Lost or damaged ballot?

*Spilled coffee on your ballot?*

*Threw it out with the recycling?*

*Never received it?*



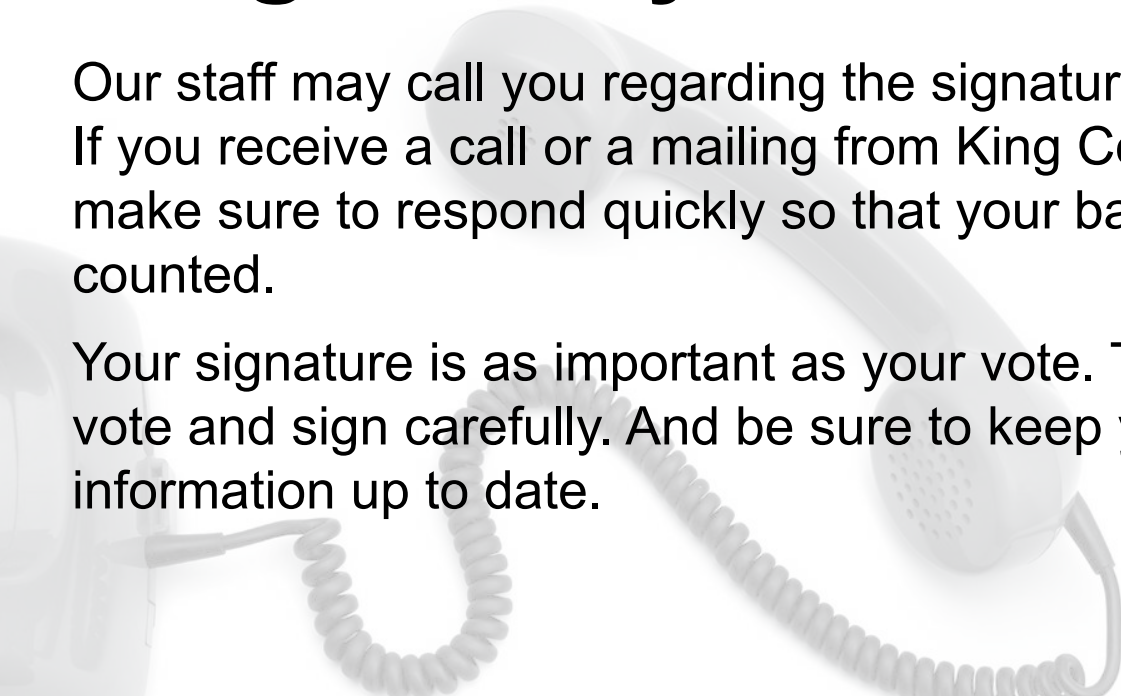
If you need a ballot, contact King County Elections. You can call, email or visit the Elections office, or request a replacement ballot online.

To avoid long lines, don't wait until Election Day!

## If you are contacted by King County Elections

Our staff may call you regarding the signature on your ballot. If you receive a call or a mailing from King County Elections, make sure to respond quickly so that your ballot can be counted.

Your signature is as important as your vote. Take your time, vote and sign carefully. And be sure to keep your registration information up to date.





# Returning your ballot early

Return your completed ballot as early as possible.

Not only will more results be available to report on election night, but we'll have more time to connect with you if we have any difficulty verifying your signature. Returning ballots as early as possible also helps us save tax dollars by keeping elections costs down.

You can return your ballot through the mail or at a ballot drop box as early as the day you receive it!



## Commissioner Position No. 4



## Gabe DeBay

**Occupation:** Firefighter-EMT; Emergency Medical Services Instructor; Small Business Owner

**Education:** Edmonds Community College: Associates Degree, Program Requirements Completed for Fire Officer Degree; attended WSU

**Statement:** As your Fire Commissioner I will make sure that you receive the *highest* level of **fire protection** and *quality emergency*

**medical services!** As a professional Firefighter-EMT in King County, I understand what it takes to bring you and your family the care you deserve.

During these tough economic times our fire district has seen a decrease in revenue. I will bring needed fiscal responsibility, backed by *experience*, while still delivering the highest possible level of service. Currently serving on a local fire department financial committee I have learned how to save tax payers' money while maintaining life safety, customer service, and jobs. I will also explore alternative funding sources so that depreciation in property values will have less of an impact on Fire District 43.

My family's home is Maple Valley. If we need the FD we want the best! That is what I will give you as Fire Commissioner.

**Contact Information:**

26828 Maple Valley Highway, Suite 143  
Maple Valley, WA 98038

206-715-9741  
VoteDeBay@gmail.com



## Jennifer C. Rydberg

**Occupation:** Attorney

**Education:** BS Chemistry, University of Puget Sound; Juris Doctor, University of Puget Sound School of Law

**Statement:** I have been one of your five fire commissioners since April 2010. As a team, we have worked hard to slash expenses and preserve firefighter jobs. We have developed long-term strategies and continued responsible financial management.

An attorney for 33 years, I bring a unique skill set to the Board, including expertise in law, contracts, sound business practices, and long-term planning.

For over 25 years, I have been active in Boy Scouts in Maple Valley, and am a past president of the Tahoma School District Board of Directors. My husband, Ray, a scoutmaster and Boeing engineer, and I have raised two sons here who are Eagle Scouts.

Critical emergency medical and fire safety services are provided in Maple Valley by a top-to-bottom team of people committed to quality and compassion. I would be proud to continue to serve our community as your fire commissioner. Thank you for your support.

**Contact Information:**

18619 SE Lake Youngs Rd.  
Renton, WA 98058

425-235-5535  
www.jcrlaw.com



## Jim Callow

**Occupation:** Systems Engineering Manager, The Boeing Company

**Education:** B.S., University of Wyoming

**Statement:** Maple Valley Fire and Life and Life Safety has challenges that require effective problem solving, innovative leadership. As an advocate for tax payers I will continue to have well trained, prepared and equipped professionals and I will be fiscally responsible to the citizens. Our

community is geographically diverse requiring response to urban and rural areas. This drives response times, equipment and personnel that we need to recognize for inclusion in total community Fire and Life Safety protection. Planning for the future requires an advocate like Jim committed to our quality of life. Effective, open and honest communications to the citizens is important to keep the community informed of the challenges ahead, needed to maintain Fire and Life Safety at the correct community levels.

**Contact Information:**

23900 242nd Way, S.E.  
Maple Valley, WA 98038

206-696-1650  
james.callow@comcast.net

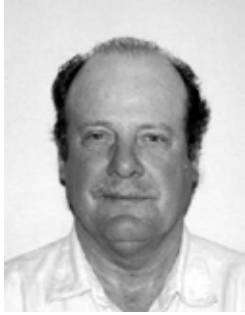
# Information in Chinese

King County Elections is required to produce election information in Chinese, including ballots, voters' pamphlets and other printed materials, along with information online and through the Voter Hotline, 206-296-VOTE (8683).

These services are provided by King County in accordance with Federal law. For more information, visit the King County Elections and Secretary of State websites.

# 中文資訊

Commissioner Position No. 3



Bill Placek

**Occupation:** Self Employed /Landscape & Building Maintenance

**Education:** Continued Education in Career Field

**Statement:** I began my career in the construction industry and was involved in site development and various aspects of construction.

I am currently the owner/operator of Bill's Maintenance Company, Inc. My business consists of grounds maintenance and building maintenance for a 20 acre condominium complex. I have contracted with Glen Acres Homeowners Association, Inc. for 30+ years.

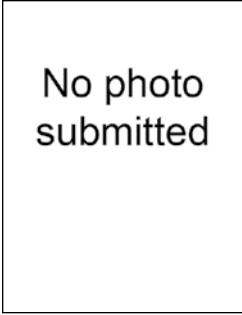
I have worked with Water District 20 and other contractors over the years, dealing with utility issues through out the Glen Acres community.

My wife and I have lived in the Burien community for 36 years. We have two adult children.

**Contact Information:**

13251 5th Ave SW  
Burien, WA 98146

bplacek1@gmail.com



Sandy Hopp

No information submitted



Darold P. Doell

**Occupation:** No information submitted

**Education:** No information submitted

**Statement:** Darold Doell's community service spans over 30 years as both Water and Fire Commissioner. In both positions, he constantly strived to improve services and maximize utilization of the ratepayers' dollars.

Darold Doell wants Water District 20 ratepayers to know:

- Is non-partisan and will represent each District member with fairness and equality.
- A strong custodian for ratepayers' funds by maintaining the purest and most efficient water system for your dollar.
- Has earned the reputation as an experienced business leader who is friendly, knowledgeable, and is especially understanding of the water needs within the District.
- Project Manager for numerous multi-million dollar Geo-Thermal and Water Projects.

Darold is a long time Burien resident. A retired Air Force Officer that has spent his entire adult life serving country and community. Has Bachelor of Arts and Masters degrees in Business Administration. Married with two grown children.

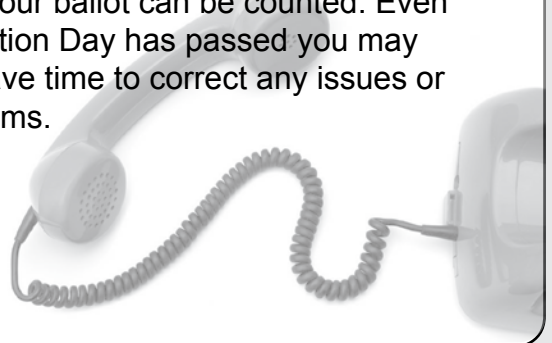
**Contact Information:**

P.O. Box 208  
Seahurst, WA 98062

206-307-4355

Contacted by King County Elections?

If you are contacted by King County Elections regarding your signature, respond promptly in order to make sure your ballot can be counted. Even if Election Day has passed you may still have time to correct any issues or problems.



## Commissioner Position No. 1



## Darren M. Yokers

No information submitted



## Darold Stroud

**Occupation:** Vice President Financial Operations, T-Mobile

**Education:** Masters of Accountancy; Brigham Young University. Bachelor of Science, Accounting; Brigham Young University

**Statement:** My family and I have lived in the Kent area for 15 years. I am running for office in order to give back to the Community and the good people that live here. I will bring a significant amount of experience and benefit

to the Board due in part to my financial expertise and background. As the current Vice President of Financial Operations for T-Mobile, I have led long range financial planning for large projects, managed significant service level improvements, drove cost efficiencies with results in excess of \$100M, and successfully managed a budget of over \$300M. I will bring this same level of success, diligence, and oversight to the Board. I look forward to working with my fellow Commissioners and District employees to continue striving to provide great service at rates that are among the lowest in the region. I appreciate your vote and the opportunity to serve you.

**Contact Information:**

14910 SE 264th St  
Kent, WA 98042

253-852-8356  
darold\_stroud3@hotmail.com

No photo  
submitted

## Mike Cole

**Occupation:** Software Test Engineer

**Education:** Tech School

**Statement:** I moved to South King County from Eastern Washington in 2003, accepting an offer to manage a local restaurant. After working for over a decade in restaurant management, I changed careers to work in the high-tech industry with computers. I have managed my own businesses, and managed businesses for others, as well as having done

consulting and marketing work to assist newer business owners in getting off to a great start. I understand what is required to keep costs down while providing top quality service.

For water and sewer services, unlike private businesses, you don't have much choice of who your service provider will be. That does not mean you have no recourse when there are problems. You have the choice of who represents you, and who you believe will be your best advocate. I will be that person, and look forward to serving you soon.

**Contact Information:**

Kent, WA 98031

253-234-5234  
mikecole79@gmail.com



## Rachelle Weiler

**Occupation:** Real Estate Agent

**Education:** University of Washington

**Statement:** I am seeking the opportunity to serve as your commissioner for Soos Creek.

I have been a lifelong Western Washington resident and have lived in the district for over 10 years. I am currently raising two daughters with my husband Travis. I am an active member with my church and the Benson Hill Elementary PTA. I am dedicated to improving

the community that we all love.

I will bring an open mind, experience, proactive thinking, and sound principals if given the privilege of serving as your new commissioner. I promise to improve your experience as both a customer and stakeholder, while continuing to provide quality, reliable, affordable water & sewer services. I believe that Soos Creek's customers deserve the best from their water & sewer provider and from their elected officials. I thank you for your time and I ask you for your vote.

**Contact Information:**

18110 114th Ave SE  
Renton, WA 98055

206-650-6467  
rachelleweiler@hotmail.com

## Commissioner Position No. 1



## Larry West

**Occupation:** Geotechnical Engineer

**Education:** His formal education includes both geology and civil engineering

**Statement:** Mr. West has over forty years of management, engineering and environmental experience with both private and government organizations. For the past 20 years he has worked for King County on many engineering projects that are similar to ones at Soos Creek Water & Sewer District. These included

evaluating physical hazard areas on proposed residential and commercial developments and landslides within the county. Prior to that time he was involved with the design and construction of several dams, tunnels, canals and associated groundwater studies for the California Department of Water Resources. He also participated in the design and construction of tunnels for the San Francisco Rapid Transit System, and a concrete arch dam and underground power station in northeastern Washington when he worked for the Bechtel Corporation. As a Partner with the engineering firm of Dames & Moore, he managed site selection and environmental studies for several nuclear plants in Washington.

**Contact Information:**  
888-686-7799



## Steve Pfaff

**Occupation:** Retired Manager Gas Supply for Cascade Natural Gas Corp.

**Education:** Bachelor's Degree from Northwestern Oklahoma State University

**Statement:** Steve has over 30 years of experience working for and with utilities and 10 years of management experience with Cascade Natural Gas Corporation. He has a proven history of effective management, excellent customer service and has worked

with federal and state regulatory agencies.

Steve and wife Noell have lived in the Soos Creek Water and Sewer District for 14 years. His background of working for a utility and his management skills would make him an excellent commissioner and retirement gives him the time to devote to the Commission in order to preserve the tradition of excellent customer service while balancing the needs of the District.

Steve looks forward to representing the community and serving as your Commissioner to find the most efficient solution to the changing requirements of the Soos Creek Water and Sewer District.

**Contact Information:**  
23913 137th Ave SE  
Kent, WA 98042

253-630-1097  
irbquilt@msn.com

## Election results

King County Elections continues to process ballots and report results from Election Day until the election ends on certification day.

Results for the primary election will be posted once on Election Day, August 16, at 8:15 p.m., and updated on subsequent weekdays at 4:30 p.m. until the election is certified on August 31. Results are posted on the King County Elections website.



## Commissioner Position No. 1



## Paul Joos

**Occupation:** Eye surgeon, businessman, Creighton Medicine Board (> decade), missions overseas, locally.

**Education:** Graduate of Renton High School (1964), Pacific Lutheran University (1968), Creighton University Medical School (1973).

**Statement:** The Public Hospital District #1 enters into a new era with the association with UW Medicine. We need a full time member of Valley Medical Center's professional

staff to watch over patient care and maintain better patient access. We need a **leader** on the board with **no political agendas or aspirations, no financial conflicts**, and who will wholeheartedly support all of our population. Although Valley Medical Center is a great institution, my goal is to put even more substance behind their marketing claims. I am not the candidate promoted by the hospital or the dissident board members, but a true advocate for the public. We need better **teamwork** on the board of commissioners to collaborate with all the members of the health delivery team. We also need this same approach for outreach to the community. I simply want to give back to the people who have provided me with a successful career.

**Contact Information:**  
4011 Talbot Rd S #210  
Renton, WA 98055

425-226-4300  
electpauljoosmd@yahoo.com



## Mary Alice Heuschel

**Occupation:** Superintendent, Renton School District

**Education:** Doctorate in Education, Nationally recognized leader and public educator

**Statement:** The new Alliance between Valley Medical and UW Medical Center is a major step forward in access to quality healthcare in our area. This Alliance must be developed and sustained to the benefit of all. As a candidate for VMC Commissioner, I am pledged to

responsibly integrate these organizations and be accountable for the benefits to our public.

### Award-Winning Leadership

Recognized as Washington's 2011 Superintendent of the Year and ranked in the top four - nationally, I have led a committed team to make the Renton School District one of the finest in the state. We made tough fiscal decisions, but never lost sight of what makes a successful student — like the link between quality healthcare and learning.

### Uniquely Qualified

My mother, a nurse, instilled in me a commitment to healthcare. Last year, serving on the Valley Medical President's Advisory Council, I learned what works — and doesn't — from many perspectives and advocated for the Alliance. I will provide fiscally responsible leadership to the Commissioner position.

Today, I ask for your vote. My record as a proven and independent community leader is available at: [www.electmaryalice.com](http://www.electmaryalice.com). I'll work to insure Valley Medical Center delivers world-class healthcare, improving our quality of life.

### Contact Information:

PO Box 1185  
Renton, WA 98507

425-572-6806  
[www.electmaryalice.com](http://www.electmaryalice.com)

Commissioner Position No. 1



**Jim Grossnickle**

**Occupation:** Engineer (contractor) - Boeing Applied Physics Laboratory

**Education:** B.S. (Electrical Engineering, Physics) - Pacific Lutheran University; M.S. and Ph.D. (Plasma Physics) - University of Washington

**Statement:** Valley needs an additional new Commissioner independent of the political establishment who can look at the big issues facing the hospital with fresh eyes.

As Commissioner, I will work to reduce property taxes and stop wasteful spending as documented by the Seattle Times and King5:

<http://www.king5.com/home/valley-medical-center-122473009.html>

[http://seattletimes.nwsource.com/html/localnews/2009961107\\_valleymed29m.html](http://seattletimes.nwsource.com/html/localnews/2009961107_valleymed29m.html)

I will make sure public resources are spent on enhancing the exceptional medical care provided at Valley, not on inflated administration salaries and unnecessary retirement benefits. I want to make sure the alliance with UW Medicine is a positive experience and that your voice is not drowned out by a larger unelected board. Your tax dollars should not be used as a blank check. I will work to improve lagging staff morale.

I pledge open government, fiscal responsibility, and holding public entities accountable. I will make sure that board decisions are made in full public view, not behind closed doors, to restore public trust. I support funding for Emergency Services and Medic One. I am endorsed by King County Councilman **Reagan Dunn** and State Auditor **Brian Sonntag**.

I am active in Hazelwood Elementary and Renton Council PTASs, Renton School District Budget Committee, and Leadership Eastside.

Please contact me at 206-276-8366 or [www.JimGrossnickle.org](http://www.JimGrossnickle.org).

**Contact Information:**

5806 119th Ave SE Ste A #127  
Bellevue, WA 98006

206-276-8366  
jimforvalley@comcast.net

# Remember to sign the return envelope

Sign the voter oath on the back of your return envelope before sending it back. Take your time and sign carefully.

Before any ballot is counted, state law requires that specially trained staff make sure the signature on the ballot envelope matches the signature on file with your voter registration. If you forget to sign, or if the signature doesn't match, Elections staff will contact you to take care of the issue.



# Why are there ballot measures and races in this pamphlet that are not on my ballot?

Don't worry, your ballot is correct.

Your ballot includes the measures and races on which you are eligible to vote and reflect the district in which you reside. The voters' pamphlet may cover several different districts and as a result, some items in this pamphlet may not appear on your ballot.

You can find all the measures for which you are eligible to vote by using the online voter guide at:  
[www.kingcounty.gov/elections](http://www.kingcounty.gov/elections).

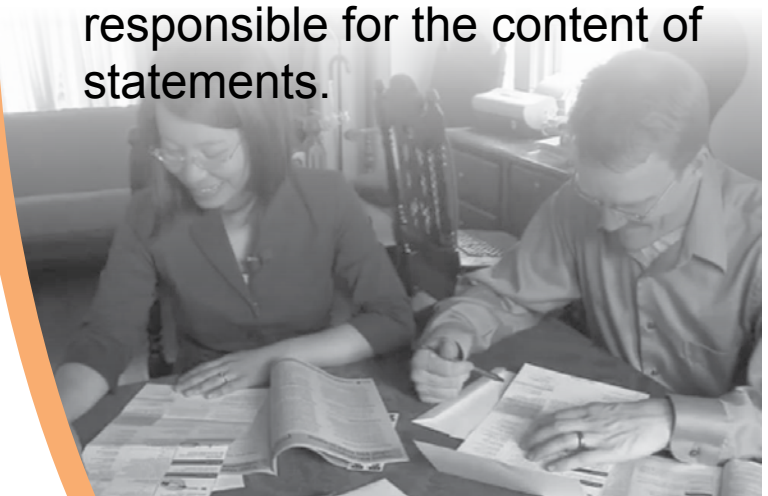
# Reading ballot measure information

## Explanatory statements

An explanatory statement is prepared by each district's attorney stating the effect of the ballot measure if passed into law.

## Committees in favor and in opposition

Districts are responsible for appointing committee members to write pro and con statements. The statements are a way to help voters decide how to vote on the measure. King County Elections is not the author or responsible for the content of statements.





### Proposition No. 1 Veterans and Human Services Levy

The King County council has passed Ordinance No. 17072 concerning funding for regional veterans, health, and human services. This proposition would replace an expiring levy and fund capital facilities and services that reduce medical costs, homelessness, and criminal justice system involvement with half of proceeds supporting veterans and their families. It would authorize King County to levy an additional property tax of 5 cents per \$1,000 of assessed valuation for collection in 2012 and authorize annual increases by the percentage increase in the consumer price index or 1%, whichever is greater, with a maximum increase of 3%, for the five succeeding years. Should this proposition be:

- APPROVED  
 REJECTED

#### Statement in favor

##### RENEW THE KING COUNTY VETERANS AND HUMAN SERVICES LEVY

The Veterans and Human Services Levy, approved overwhelmingly by voters in 2005, has improved the lives of over 82,000 veterans, their families, and others across King County.

This is a RENEWAL of an existing levy, not a new tax or increase. Despite tremendous needs of veterans returning from service, the non-partisan citizen oversight boards recommended providing services efficiently and with accountability, holding the line on taxes. The average homeowner would invest only \$17 annually.

Voting YES to renew the Veterans and Human Services Levy supports these essential services:

- Employment training
- Veterans treatment for Post-Traumatic Stress Disorder (PTSD)
- Housing with support services
- Behavioral health services
- Services for new mothers and infants

The levy is supported by all nine members of the non-partisan King County Council, Executive Constantine, veterans, human service providers, housing and public health advocates, and leaders throughout King County.

Vote YES to RENEW the Veterans and Human Services Levy—a small investment, with a huge impact for our veterans, our neighbors, and our communities.

Supported by: YWCA, Plymouth Housing, HealthPoint Senior Services, Valley Cities Counseling & Consultation, Catholic Community Services, Hopelink, Kent Youth and Family Services

**Statement submitted by:** Bob Ferguson, Doug Hoople and Sue Sherbrooke  
• <http://www.vetsandhumanservices.org/>

#### Explanatory statement

If approved by voters, Proposition 1 would authorize King County to levy an additional regular property tax at the rate of five cents (\$0.05) or less per one thousand dollars (\$1,000) of assessed valuation on all taxable property within King County to fund regional health and human services for veterans and military personnel, their families, and other needy residents. The levy would be authorized for a six-year period with collection beginning in 2012 and would replace a levy expiring this year that voters approved in 2005. In years two through six of the levy, annual increases would be authorized up to the greater of 1% or the percentage increase in the consumer price index, up to a maximum of 3%.

Services specific to the needs of veterans and military personnel and their families funded by the levy would include treatment for posttraumatic stress disorder, specialized employment assistance, and services that increase self-sufficiency. Services that would also be available to other residents in need would include mental health counseling, substance abuse prevention and treatment, employment assistance, housing assistance, homelessness prevention, and services that reduce involvement in the criminal justice system and reduce emergency medical costs. Levy proceeds would also be used to fund capital facilities for these services. Half of the levy proceeds would fund services for veterans and military personnel and their families. The other half would fund services for a wide range of citizens in need.

If Proposition 1 passes, a citizen oversight board created in 2005 would continue to review the expenditure of levy proceeds and make policy recommendations to the King County executive and the King County council on levy expenditures.

---

*The complete text of this measure begins on page 61.*

#### Statement in opposition

No statement submitted.

Statements in favor of and in opposition to a ballot measure are submitted by committees appointed by the jurisdiction. No persons came forward to serve on the committee and to write a statement in opposition. If you would like to be involved with a committee in the future please contact the jurisdiction.



## Referendum 1

The Seattle City Council passed Ordinance Number 123542 entering into agreements related to the Alaskan Way Viaduct replacement. Section 6 of that ordinance has been referred to the voters for approval or rejection.

Section 6, if approved, would authorize the City Council to give notice to proceed, beyond preliminary design work, with three agreements concerning the State's proposal to replace the Alaskan Way Viaduct with a deep-bore tunnel. Section 6 states:

“The City Council is authorized to decide whether to issue the notice referenced in Section 2.3 of each Agreement. That decision shall be made at an open public meeting held after issuance of the Final Environmental Impact Statement.”

Should this ordinance section be:

- APPROVED  
 REJECTED

## Explanatory statement

### Alaskan Way Viaduct replacement agreements referendum measure (Ord. 123542, Section 6)

#### 1. Ordinance Number 123542, Section 6, and the referendum process

This ballot measure will neither approve nor reject the deep-bore tunnel as an alternative to replace the Alaskan Way Viaduct. Rather, as explained below, your vote will affect how the City Council will decide whether to proceed with current agreements on the deep-bore tunnel beyond preliminary design work, after environmental review is completed.

The Seattle City Council enacted Ordinance 123542 (the Ordinance) on February 28, 2011, accepting three agreements between the City of Seattle and the Washington State Department of Transportation (the State). The agreements relate to the City's and the State's preferred alternative to replace the Alaskan Way Viaduct along Seattle's central waterfront with a deep-bore tunnel. The three agreements address utility design, utility relocation, property issues, environmental remediation, design review, permitting, and construction coordination. Construction of the proposed deep-bore tunnel is the subject of a separate contract between the State and a contractor. The City is not a party to that construction contract.

A sufficient number of Seattle voters signed referendum petitions to refer the Ordinance to a public vote. The King County Superior Court, however, determined that Section 6 of the Ordinance is subject to a public vote. The rest of the Ordinance, now in effect, accepts the agreements (Sections 1 and 2); authorizes the Clerk to sign the agreements (Section 3); directs the Mayor to see that the agreements are faithfully kept and performed (Section 4); provides that the agreements may only be amended as authorized by ordinance (Section 5); ratifies and confirms prior consistent acts (Section 7); and

provides for an effective date (Section 8).

Section 6 of the Ordinance references an identical Section 2.3 in each of the three agreements currently in effect. Under Section 2.3 only preliminary design work is permitted before issuance of the Final Environmental Impact Statement (FEIS) and the federal Record of Decision (ROD). An FEIS provides an analysis of the environmental impact of a proposed action and reasonable alternatives to the proposed action. In its ROD, the Federal Highway Administration will select an alternative from the FEIS for purposes of federal funding. Section 2.3 specifies that the City Council will decide whether to issue the notices to proceed with work under the agreements beyond preliminary design work if the deep-bore tunnel alternative is selected. If the deep-bore tunnel alternative is not selected, the agreements terminate.

Section 6 authorizes the City Council to decide whether to issue the notice to proceed with work under the agreements at an open public meeting after issuance of the FEIS and ROD without passing another ordinance.

#### 2. The law as it presently exists

The Ordinance accepted the three agreements regarding replacement of the Alaskan Way Viaduct. Section 6 of the Ordinance is suspended pending the results of this referendum. These agreements between the City of Seattle and the State are currently in effect as they relate to preliminary design work on the proposed deep-bore tunnel. The three agreements are available on the City's website at: <http://www.seattle.gov/leg/clerk/tunnelagreements.pdf>

In order for the agreements to be effective beyond the preliminary design phase of the project, the following must occur: (i) the Federal Highway Administration must issue a ROD selecting the deep-bore tunnel; (ii) the State must issue a notice of its decision to proceed; and (iii) the City Council must issue a notice of its decision to proceed. After issuance of the federal ROD, the City Council may decide whether to proceed with these agreements. Under present law, the City Council has the authority to make this decision only by enacting another ordinance. An ordinance is subject to potential veto and potential referendum.

#### 3. The effect of Ordinance 123542, Section 6, if approved by the voters

Section 6 would authorize the City Council to issue the notice to proceed with the agreements beyond the initial design phase without requiring an ordinance. A decision by the City Council to issue the notice must still be made at an open public meeting after issuance of the FEIS and the federal ROD.

#### 4. The effect of this referendum vote

If a majority of voters casting ballots in this referendum vote to **approve** Section 6 of the Ordinance, it will become law, and the City Council would have the authority to decide to proceed with the agreements beyond the preliminary design phase of the project without enacting another ordinance.

If a majority of voters casting ballots in this referendum vote to **reject** Section 6 of the Ordinance, then it will not become law, the law will remain as it is now, and the City Council would have the authority to proceed with the agreements beyond preliminary design phase of the project only by enacting another ordinance, which would be subject to a potential veto and potential referendum.

## Statement in favor

### It's Time to Move Forward: APPROVE Referendum 1

Enough is enough. We all know the Alaskan Way Viaduct is dangerous and needs to be replaced.

For ten years, we've studied every conceivable option. As representatives of Pike Place Market, neighborhood businesses, and working families, we participated in many of these discussions, and we were happy to reach consensus with transportation engineers, citizen advisory panels, the Seattle City Council, King County Executive and Governor to move people and freight with a tunnel. Construction contracts have been awarded and work has begun—ahead of schedule and under budget. Why are we second-guessing this now?

The tunnel is the only option with funding from the state and the only option that keeps the Viaduct open during construction.

### APPROVE Ref 1: We Cannot Afford More Delay, Broken Promises

We've talked about replacing the Viaduct longer than it took to fight WW II. Mayor Mike McGinn and other Ref 1 opponents use delay and obstruction to push their own agenda, which is to replace the Viaduct with nothing and force 110,000 cars on city streets and I-5, with no state money for transit or road improvements. What does this "surface option" mean for you? More traffic, more delay, busses and freight caught in gridlock.

### APPROVE Ref 1: To Hold Politicians Accountable

During his campaign, Mayor McGinn promised to NOT stand in the way of the tunnel but quickly broke his promise: creating legal and political paralysis. Mayor McGinn, with Tim Eyman's support, worked to get Ref 1 on the ballot. Tell them to stop by approving Ref. 1.

### APPROVE Ref 1: For Environmental Improvements on our Waterfront

The tunnel package includes bike and pedestrian investments, parks and open space, salmon habitat and storm water improvements that will protect the Sound.

### APPROVE Ref 1: Progress over Endless Process

The text of Ref. 1 is confusing and voters have a right to be angry and impatient. Legal experts and reporters acknowledge it's not an up-or-down vote on the tunnel. But we are at a crossroads: Either we reaffirm the progress we've made, or waste time and taxpayer money with more litigation. We urge you to APPROVE Ref. 1, and let's move forward.

## Rebuttal of statement in opposition

The opponents of Ref. 1 say things that simply aren't true. Here are the facts:

- Despite opponent's legal challenge, the City Ethics and Elections Commission said this vote only determines whether we move forward or get more process.
- We have had ten years of process, with hundreds of meetings and comments. A community stakeholder group—including environmental, bicycle, and transit advocates—recommended the deep-bore tunnel.
- The Viaduct replacement package includes \$32 million for Metro Transit. King County is committed to an additional \$190 million in transit investments.
- The tunnel is fully funded by the state, with \$100's of millions in reserves.
- Opponents don't have a real solution—their "surface option" places the full cost on Seattle taxpayers. It is irresponsible for Mayor McGinn and other opponents to risk \$2.4 billion of state money with no realistic alternative—only delay and obstruction.

Let's move forward: Approve Ref. 1

**Statement submitted by:** Carol M. Binder, former Executive Director, Pike Place Market • David Freiboth, Executive Secretary, M.L King County Labor Council • Patricia Mullen, President, West Seattle Chamber of Commerce [www.letsmoveforward.org](http://www.letsmoveforward.org)

## Statement in opposition

Referendum 1 is your opportunity to tell the politicians to **reject a tolled deep-bore tunnel** replacement of the Alaskan Way Viaduct.

In Seattle, we consistently vote to spend our limited public dollars on things that align with our priorities and will create a better future for our city – things like parks, libraries, community centers, transit, families and education, housing, Pike Place Market, and fixing our streets – things we all use and value.

In the past, when politicians have tried to push through projects that don't fit our priorities, like razing Pike Place Market or building an expressway through the Arboretum, we've come together as a city, rejected their plan and told them we deserve better.

In 2009, politicians cut a risky and expensive backroom deal to pursue a tolled tunnel under Seattle. In an economic downturn, they chose a Viaduct replacement option with **no exits downtown**, and a price tag **one billion dollars more than other solutions**. Since that day, they have refused to have a transparent conversation about the project or explain how they will address the project's practical and financial failures.

The facts about the tolled tunnel are clear – it will:

- Result in significant **tax increases** to cover the \$700 million project funding deficit;
- Stick Seattle taxpayers with the bill for **cost overruns**, thanks to a state law enacted by the governor and the legislature;
- Increase congestion with **\$7-9 roundtrip tolls** forcing tens of thousands of cars onto city streets; and
- **Make transit service worse**, since it includes NO money for improved transit service and the proposed mega-interchange in Pioneer Square will cause impenetrable congestion for West Seattle buses.

The tolled tunnel is a terrible idea that does not align with our priorities. We can't afford it, and it puts the future of our city at risk. That's why the politicians fought so hard to prevent a vote on it – because they know that if the public knew the facts about the tolled tunnel, then we would once again come together as a city and **demand a better solution**.

Seattle deserves a solution for replacing the Alaskan Way Viaduct that we can afford, makes it easier to get around, improves transit service, and does not threaten our other, more important priorities. The most important step to a better solution is this vote, when we stand up to the politicians and **reject Referendum 1**.

## Rebuttal of statement in favor

The tunnel is not a done deal. It's a bad plan, and we can stop it.

Imagine it was up to you to approve a \$4.2 billion replacement of the Viaduct with the world's largest tunnel, but the design included **no downtown exits**, cost hundreds of millions more than your budget, and stuck **Seattle taxpayers with cost overruns**.

You'd say, "There must be a better way."

There is, and other options that have been largely ignored cost at least \$1 billion less than this luxury project.

Seattle's healthy future depends on a practical solution that **saves money** for other priorities.

Instead of arguing the tolled tunnel's merits, or addressing the project's many serious problems, tunnel backers simply say we're too far down the road to reconsider. They make this about personalities as opposed to facts, and say the vote doesn't matter. **Seattle, we are smarter than that.**

### REJECT Referendum 1.

**Statement submitted by:** Cary Moon, People's Waterfront Coalition • Tim Harris, Real Change News • Kevin Fullerton, Sierra Club [www.protectseattlenow.org](http://www.protectseattlenow.org) • 206-913-3725

**Proposition No. 1****Formation and Funding of Tukwila Pool Metropolitan Park District**

Tukwila Resolution No. 1738 proposes creation of the Tukwila Pool Metropolitan Park District, coextensive with the City's boundaries pursuant to RCW 35.61, including the authority to levy a general tax on property within the District each year, not to exceed 15 cents per thousand dollars of assessed valuation, for the purpose of acquiring and operating a pool facility.

The Tukwila Pool Metropolitan Park District is to be governed by the City Council of the City of Tukwila, serving as the Board of Commissioners in an ex officio capacity.

- FOR THE FORMATION OF A TUKWILA POOL METROPOLITAN PARK DISTRICT TO BE GOVERNED BY THE TUKWILA CITY COUNCIL, SERVING AS THE BOARD OF COMMISSIONERS
- AGAINST THE FORMATION OF A TUKWILA POOL METROPOLITAN PARK DISTRICT

**Statement in favor**

Tukwila Pool belongs to all of us. For nearly 40 years it has impacted our quality of life and makes our city livable. It is necessary, nearby, and accessible for all.

At the pool, lifeguards, firefighters and airline personnel are trained to save lives. Families are taught to swim, combating the second leading cause of unintentional death among children in our state -- drowning. The pool provides low-impact, aerobic exercise, especially for our seniors and citizens with health conditions, including physical therapy for Tukwila school students and traumatic brain injured and post-amputation veterans. Our pool is large enough for training in scuba and kayaking, and competitions for swimming, diving and synchronized swimming. Our pool hosts summer camps, Space Camp, and birthday parties. Our seniors socialize there and teens have a positive outlet for their energy.

This nearby amenity makes Tukwila an attractive location to settle, positioning us for the recovery.

A metropolitan park district will provide stable funding and opportunities for improvement.

We can continue to build upon the Thrust Forward legacy that positively impacts our health and welfare.

A no vote means the pool will close by Sept. 15, 2011. A YES vote opens up our future.

**Rebuttal of statement in opposition**

This isn't a philosophical question. A "no" vote closes the pool. Some services cost more. That doesn't mean they're worth less. It's easy to target more expensive services, regardless of their importance. Citizens are telling the government the pool is a priority for our kids, seniors, the infirm and the athletic. Water safety is absolutely necessary in our community. A metropolitan park district ends the pool's vulnerability to quick-fix budget trimming. Vote YES.

**Statement submitted by:** Save Tukwila Pool Committee • savetukwilapool@clearwire.net

**Explanatory statement**

If approved by the voters, this ballot measure would authorize the creation of the Tukwila Pool Metropolitan Park District, encompassing the same boundaries as the City of Tukwila. The City of Tukwila currently operates and maintains the City of Tukwila Pool. The City does not have the resources to continue to manage, maintain and operate the pool. If this proposition is approved, the Tukwila Pool Metropolitan Park District would be created to maintain and operate the Tukwila Pool.

The District would have all the powers enumerated in Ch. 35.61 RCW including the power to levy an annual tax on all taxable property within the district in an amount not to exceed 15 cents per \$1000 of assessed valuation. The District would also have the authority to issue debt and to exercise the right of eminent domain. The District would be governed by the Tukwila City Council, serving as the board of commissioners.

*The complete text of this measure is available at the Elections Office or online at [www.kingcounty.gov/elections](http://www.kingcounty.gov/elections).*

**Statement in opposition**

Let's examine the proposal:

Today, Politicians slough off their responsibilities to budget honestly. They select a critical service from the budget and refer that item to the people with a tax themselves anew to get it attitude. Emergency medics come quickly to mind. In this instance it is a swimming pool.

Legislative bodies are charged with making decisions about which are the priority of each service they can purchase with what we can afford with our taxes. Of course, the legislature has broad choices. They have the whole budget to pick and choose from. If you had the same choice, you may very well select a different set of priorities. You might choose a swimming pool rather than so many parks. Or you might ask citizens to help out maintaining parks. In any event, infinite service acquisition isn't possible.

Philosophically, the act is the same as having the Administration and Council go out to the vegetable truck and select all the good vegetables they want to feed their constituents and telling the on looking masses to pony up more money.

Send the proposition back by voting no with the message that we aren't taking the bait. Additionally, do your job.

**Rebuttal of statement in favor**

We are being asked to vote authority to the city of Tukwila to create a second new tax stream this year. They have already increased fees that impact the poorest among us the most. This tax is collected in perpetuity, every year on our homes, not to exceed 15 cents per thousand dollars of assessed valuation unless repealed by a future Mayor-Council vote. Practically, the tax is a forever tax.

We have kids to feed!

**Statement submitted by:** Marvin Willoughby • 206-241-5885

## Proposition No. 1 Veterans and Human Services Levy

AN ORDINANCE providing for the submission to the qualified electors of King County at a special election to be held in King County on August 16, 2011, of a proposition to provide regional health and human services to residents of King County by renewing and replacing authorization of the veterans and human services property tax levy in excess of the levy limitation contained in chapter 84.55 RCW, for a consecutive six-year period at a first year rate of not more than \$0.05 per one thousand dollars of assessed valuation, with subsequent maximum levy collections being increased by the greater of 1% or the percentage increase in the consumer price index as long as that amount does not exceed 3%, for the purpose of providing funding to enable the provision of health and human services such as affordable and supportive housing, mental health counseling, substance abuse prevention and treatment, employment assistance and other essential regional health and human services for residents of King County and establishing county citizen oversight boards to review and report on expenditures of levy proceeds, contingent on voter approval of the levy.

BE IT ORDAINED BY THE COUNCIL OF KING COUNTY:

### SECTION 1. Findings:

A. To enhance the available funding for veterans and other human services in King County, the metropolitan King County council approved Ordinance 15279, placing a six-year veterans and human services levy on the ballot. In November 2005, the veterans and human services levy passed with nearly fifty-eight percent approval, generating much needed funding to help veterans, military personnel and their families and other individuals and families in need across the county through a variety of regional health and human services.

B. The veterans and human services levy generates an average of \$14.6 million per year. One-half of these revenues are dedicated exclusively for veterans and their families and the remaining one-half is dedicated to other King County residents in need of human services. This levy remains in effect until December 31, 2011.

C. All activities supported by the levy advance one or more of three overarching policy goals:

1. Reducing homelessness;
2. Reducing emergency medical and criminal justice involvement;

or

3. Increasing self-sufficiency for veterans, military personnel, their families and other individuals and families in need.

D. Since 2006, the veterans and human services levy has met these policy goals by:

1. Enrolling over one thousand seven hundred chronically homeless individuals in outreach services as a first milestone in ending homelessness. Of those helped, approximately eighteen percent are veterans and at least one hundred had been involved in the criminal justice system due to mental illness or co-occurring disorders;

2. Providing over four hundred homeless veterans with twenty-four thousand bed-nights of emergency shelter and transitional housing, coupled with case management and advocacy;

3. Expanding King County's existing veterans programs and adding one new program to serve over nine thousand military personnel, veterans and their families. These programs include: financial aid and emergency assistance for rent, food, utilities, medical needs and burial; employment services such as job placement, career counseling and job training; transportation; mental health counseling, including crisis and posttraumatic stress disorder counseling and intervention services; case management services for those needing housing, treatment or other assistance; long-term and short-term housing; treatment for trauma; homeless prevention; veterans' incarcerated prevention; and other programs;

4. Serving three hundred eighty veterans experiencing posttraumatic stress disorder with five thousand nine hundred thirty hours of levy-funded counseling in 2009 alone, with a demonstrated success rate of ninety-five percent of clients reducing posttraumatic stress disorder symptoms;

5. Assessing over ten thousand four hundred low-income persons for behavioral health issues. Of these persons, more than three thousand were indicated to have depression or anxiety symptoms and entered treatment by the end of 2009;

6. Treating one thousand primary care clients, including an estimated one hundred fifty veterans or their family members, successfully reducing their depression or anxiety symptoms and improving their long-term health prospects; and

7. Screening over seven thousand one hundred mothers for maternal depression. Of these, six hundred eighty-five received behavioral health treatment services, contributing to the healthy development of their children. Of those measured, sixty-eight percent have reduced depression or anxiety, or both, thereby improving the likelihood of their successful parenting and improved self sufficiency;

E. Although the veterans and human services levy is set to expire at the end of 2011, the need for veterans and human services remains high. Approximately one hundred thirty-nine thousand veterans live in King County representing over twenty percent of the state's veterans. The population of veterans in the state is growing and Washington ranks eighth nationwide for the total number of veterans in the state.

F. King County has a growing homeless population, estimated to be as many as eight thousand five hundred on any given night. Among these, the United States Department of Veterans Affairs estimates that there are as many as two thousand five hundred homeless veterans in the Puget Sound region.

G. The current recession continues to challenge individuals and families throughout the region, as high unemployment and foreclosure rates increase the need for housing and supportive health and human services.

H. King County's current expense fund faces continuing challenges in future years, including anticipated shortfalls in 2012 and 2013 in excess of twenty million dollars each year. As a discretionary service under state law, human service funding has been almost entirely eliminated and faces complete elimination in future years. At the state level, cuts to human services funding are anticipated to have devastating impacts on King County families in need.

I. Given the positive outcomes of the veterans and human services levy on the lives of veterans, military personnel, their families and other individuals and families in need, and the projected need for sustained veterans and human services funding in future, it is appropriate to ask the voters to renew and replace the veterans and human services levy.

J. The current economic crisis has eroded property values causing jurisdictions to reach the limits of the authorized property tax rate under state law. As a result, any future increase in the veterans and human services levy rate would negatively affect the ability of other jurisdictions in King County to collect needed revenues for flood prevention, hospital maintenance and fire district operations. As such, it is appropriate to maintain the current rate of \$0.05 per one thousand dollars of assessed valuation in the first year of the levy.

K. Under state law, a levy lid lift is limited to a maximum term of six years if the levy provides for a specified index to be used to determine the limit factor.

**SECTION 2. Definitions.** The definitions in this section apply throughout this ordinance unless the context clearly requires otherwise.

A. "Family" means a veteran's or military personnel's spouse, domestic partner or child or the child of the spouse or domestic partner or

other dependent relatives if living in the household of a veteran or military personnel.

B. "Human services for veterans" means services and projects of the King County veterans' program specifically developed to meet the needs of veterans, military personnel and their families in King County.

C. "Levy" means the levy of regular property taxes for the specific purpose and term provided in this ordinance and authorized by the electorate in accordance with state law.

D. "Levy proceeds" means the principal amount of funds raised by the levy and any interest earnings on the funds.

E. "Limit factor" means the greater of 1% or the percentage increase in the consumer price index as long as that amount does not exceed 3%. The consumer price index is defined as the ratio of the most recent June Consumer Price Index to the immediately previous June Consumer Price Index (final published CPI-W Seattle-Tacoma-Bremerton, as calculated by the United States Bureau of Labor Statistics, or its successor) expressed as a multiple of one hundred percent to achieve the result of one hundred percent plus inflation.

F. "Military personnel" means those persons currently serving in a branch of the military, including the National Guard and reservists for any branch of the military.

G. "Regional health and human services" means a range of services and related capital facilities, including housing, that meet basic human needs and promote safe and healthy communities including, but not limited to:

1. Prevention and early intervention services that reduce or prevent adverse human behaviors and social conditions that lead to crises, serious dysfunction or disability;
2. Criminal justice linked services that assist individuals and their families in avoiding or mitigating their involvement with the criminal justice system;
3. Crisis intervention services that address life threatening situations and other crises;
4. Rehabilitation and support services that provide treatment for individual and family problems or provide support to maintain or enhance their present level of independence.

H. "Veterans" mean those persons who have served in any branch of the military, including the National Guard and reservists for any branch of the military.

**SECTION 3. Levy submittal to voters.** To provide necessary funds for the provision of regional health and human services to King County's veterans, military personnel and their families and other residents in need of health and human services, the county council shall submit to the qualified electors of the county a proposition to renew and replace an expiring levy and authorize a regular property tax levy in excess of the levy limitation contained in chapter 84.55 RCW for six consecutive years, commencing in 2011, with collection beginning in 2012, at a rate not to exceed five cents per one thousand dollars of assessed value in the first year, with subsequent levies limited by the limit factor as defined in section 2 of this ordinance.

**SECTION 4. Deposit of levy proceeds.** The levy proceeds shall be deposited in two special revenue funds, which funds shall be specified by ordinance. The levy proceeds shall be divided to place fifty percent of the levy proceeds in one fund designated for the provision of regional health and human services for veterans, military personnel and their families. The remaining fifty percent of the levy proceeds shall be placed in another fund designated for the provision of regional health and human services to a wide range of people in need of such services.

**SECTION 5. Eligible expenditures.** If approved by the qualified electors of the county, all levy proceeds shall be used to pay the costs associated with provision of regional health and human services to a

wide range of people in need of such services, including, but not limited to, services that increase self-sufficiency for veterans, military personnel and their families, services that reduce involvement in the criminal justice system, services that reduce emergency medical costs, services for children and youth, the elderly, the unemployed and underemployed and for services specific to veterans' needs such as treatment for posttraumatic stress disorder and specialized employment assistance. The provision of services will include a range of regional health and human services and related capital facilities including, but not limited to, housing assistance, homelessness prevention, mental health counseling substance abuse prevention and treatment and employment assistance.

Eligible expenditures shall also include payment of costs to strengthen and improve the health and human services system and infrastructure to provide greater access to services and engender better coordination and integration of regional health and human services addressing the needs of veterans, military personnel and their families.

**SECTION 6. Call for special election.** In accordance with RCW 29A.04.321, it is hereby deemed that an emergency exists requiring the submission to the qualified electors of the county at a special election to be held on August 16, 2011, a proposition authorizing a regular property tax levy for the purposes described in this ordinance. The director of the elections department shall cause notice to be given of this ordinance in accordance with the state constitution and general law and to submit to the qualified electors of the county, at the said special county election, the proposition hereinafter set forth. The clerk of the council shall certify that proposition to the director of the elections department, in substantially the following form, with such additions, deletions or modifications as may be required for the proposition listed below by the prosecuting attorney:

PROPOSITION 1: The King County council has passed Ordinance 17072 concerning funding for regional veterans, health, and human services. This proposition would renew and replace an expiring levy and fund capital facilities and services that reduce medical costs, homelessness, and criminal justice system involvement with half of proceeds supporting veterans and their families. It would authorize King County to levy an additional property tax of 5 cents per \$1,000 of assessed valuation for collection in 2012 and authorize annual increases by the percentage increase in the consumer price index or 1%, whichever is greater, with a maximum increase of 3%, for the five succeeding years. Should this proposition be:

Approved? \_\_\_\_\_

Rejected? \_\_\_\_\_

**SECTION 7. County citizen oversight boards established.** If the levy is reapproved by the voters, the oversight boards established by Ordinance 15279 shall be continued and the criteria identified for board membership shall be maintained.

**SECTION 8. Ratification.** Certification of the proposition by the clerk of the county council to the director of the elections department in accordance with law before the election on August 16, 2011, and any other act consistent with the authority and before the effective date of this ordinance are hereby ratified and confirmed.

**SECTION 9. Severability.** If any provision of this ordinance or its application to any person or circumstance is held invalid, the remainder of the ordinance or the application of the provision to other persons or circumstances is not affected.

Ordinance 17072 was introduced on 1/3/2011 and passed as amended by the Metropolitan King County Council on 5/2/2011, by the following vote:

Yes: 9 - Mr. Phillips, Mr. von Reichbauer, Mr. Gossett, Ms. Hague, Ms. Patterson, Ms. Lambert, Mr. Ferguson, Mr. Dunn and Mr. McDermott

No: 0

Excused: 0

<u>Candidate</u>	<u>Page</u>				
Adman, Eric	47	Gardiner, Jason	18	Peaslee, Sharon	37
Allen, Gwen	21	Godden, Jean	29	Perry, Debra	23
Anderson, Joy	45	Goodspaceguy	10	Peterson, Danny	46
Anderson, Terry	34	Goss, Mary Jane	17	Pfaff, Steve	53
Asher, Dave	19	Grossnickle, Jim	55	Placek, Bill	51
Bennett, Jim	20	Hague, Jane	9	Prince, Ed	25
BeSerra, Carrie	46	Hart, James A. (Jim)	19	Ralph, Dana	22
Bisset, Gordon A.	24	Heibe, Othman	34	Raplee, Debbie	21
Blomstrom, David	42	Heuschel, Mary Alice	54	Rydberg, Jennifer C.	50
Bonincontri, Patsy	8	Hinson, Chuck	18	Sanderson, Leonard	23
Boyce, Bill	21	Honda, Susan	16	Sanoy, Ruth	35
Buetow, Michelle	43	Hopp, Sandy	51	Sealfon, Michael S.	22
Callow, Jim	50	Irigon, Frank	24	Shaw, Gordon M.	15
Carr, Sherry	39	Isenhath, Stan	47	Shelton, Andrew T.	24
Clark, Sally J.	30	Jones, Robin H.	25	Skorupa, Nancy	20
Classen, Maurice	28	Joos, Paul	54	Smith, Suzanne	22
Cole, Mike	52	Karshie, Fathi	30	Sparling, Scott M.	16
Cook-Bensley, Sandra	34	Koppang, Mark	16	Spearman, Michael	13
Creighton, John	9	Krakowiak, Lucy	14	Sternoff, Bob	18
Cummings, John	36	Kruller, Kate	35	Strander, Louise H.	35
Dacy, Ed	14	Lambert, Charles	21	Stroud, Darold	52
DeBay, Gabe	50	Lewis, Caleb	23	Sundquist, Steve	45
Doell, Darold P.	51	Lippmann, Stan	17	Taylor-Judd, Michael	28
Drake, Elizabeth	46	Maier, Peter	37	Thomas, Les	20
Duff, Greg	14	Martin, Kate	40	Thompson, Dwight A.	17
Dunn, John	42	Martinez, Joey	15	Toledo, Diana	11
Edgar, Bob	15	Martinez, Mark	25	Valderrama, Ramiro	26
Ellis, Don	47	Martin-Morris, Harium	43	Wasnick, Jim	26
Esparza, Nick	44	McDermott, Joe	10	Weber, Mark T.	39
Ferguson, Dian	31	McLaren, Marty	44	Weiler, Rachelle	52
Flygare, Roger	16	Menage, Terrence J.	38	West, Larry	53
Forch, Bobby	29	Mitchell, Richard E.	8	Whelan, Jack	38
Galvin, John	26	Morgan, Martin	19	Yokers, Darren M.	52

## Ballot measure contact information

King County Proposition No. 1

Anne Noris - Clerk of the Council  
206-296-0364

City of Seattle  
Referendum No. 1

Monica Martinez Simmons - City Clerk  
206-684-8361  
monica.simmons@seattle.gov

City of Tukwila  
Proposition No. 1

Rick Still - Parks and Recreation Director  
206-767-2344  
rstill@ci.tukwila.wa.us

If you have questions regarding the measures on your ballot you can contact the district proposing the measure at the information provided above.

The complete text of ballot measures is available at the King County Elections Office or online at [www.kingcounty.gov/elections](http://www.kingcounty.gov/elections).



**King County**

Department of Elections  
919 SW Grady Way, Ste 100  
Renton, WA 98057-2906

NON PROFIT ORG  
US POSTAGE  
PAID  
SEATTLE, WA  
PERMIT NO 1455

# ECRWSS Residential Customer

## Primary Edition

To obtain this pamphlet in an alternate format please contact King County Elections at 206-296-VOTE (8683).

King County produces all election materials in both English and Chinese. If you, or someone you know, needs language assistance, call King County Elections and request a ballot and voting material in Chinese.

為符合聯邦法律，此資料有中文版本。



Please recycle your voters' pamphlet