

Lake Washington School District No. 414

King County Elections is not authorized to edit statements, nor is it responsible for the contents therein.

Proposition No. 3 Construction Levy (Critical Construction Needs)

The Board of Directors of Lake Washington School District adopted Resolution No. 2321 for educational facilities and critical construction needs. This proposition authorizes construction of elementary, middle school and high school classroom capacity; and acquisition of required property; and authorizes the following excess levies for such purposes on all taxable property within the District:

Collection Year	Estimated Levy Rate/\$1,000 Assessed Value	Levy Amount
2023	\$0.42	\$35,000,000
2024	\$0.51	\$45,000,000
2025	\$0.49	\$45,000,000
2026	\$0.60	\$58,000,000
2027	\$0.55	\$56,000,000
2028	\$0.53	\$56,000,000

as provided in the Resolution. Should this proposition be approved?

Yes
No

The complete text of this measure is available at the Elections Office or online at kingcounty.gov/elections.

Statement in favor

Submitted by: Penny Sweet, Angela Birney, Karen Moran, Vote4lwsdkids.org

Our schools are facing critical capacity issues. As one of the fastest-growing districts in the state, we must act now to address overcrowding. Many schools are already over-capacity, and by 2030, 83% of all schools in the district will be at or over capacity.

Our district relies on more than 160 portables to accommodate current enrollment – that's equivalent to 5 elementary schools! Students learning in portables are separated from core facilities like bathrooms, offices, specialists, the library and cafeteria, which presents logistical challenges. Furthermore, failing to act now will only increase the cost down the road of operating and purchasing more temporary space.

Students can't learn effectively in makeshift classrooms, and have needed to use hallways and converted spaces for learning. Overcrowding further threatens our ability to deliver smaller class sizes that are so important to giving all students the individual attention they need to succeed.

Voting yes builds additional permanent classrooms for 2,300 students at all levels across the district to address current needs and prepares for future growth. All students deserve access to a safe, productive learning environment. Please join community leaders, elected officials, and your neighbors in voting yes for our schools!

Rebuttal of statement in opposition

Voting yes adds new classrooms at Redmond Elementary campus, additions at Finn Hill, Kirkland, and Redmond middle schools, plus capacity for 1,200 high school students. For a full list of projects visit www.lwsd.org/education-levies.

This is not a new tax. Because bond debt is being paid off, the levy increases capacity while keeping the tax rate low. Passing all 3 measures only increases property taxes by \$270 per year for a \$1,000,000 home. Vote yes.

Explanatory statement

Lake Washington School District requests voter approval of a Construction Levy to fund the *Building Excellence* plan and enables the district to pay for critical classroom needs not funded by the state and needed to meet current and future educational programs for its students. The district has grown by over 7,300 students since 2008 and expects to enroll 3,500 more students by 2030.

These funds would be deposited in the Capital Projects Fund to pay for construction of classrooms to provide space for over 2,300 students. Projects include elementary capacity in the Redmond area; additional capacity at Finn Hill, Kirkland and Redmond middle schools; additional high school capacity; and acquisition of property for future needs.

Passage of this proposition would provide an average of \$49.2 million per year over the next six years. If authorized by the voters and based on current assessed valuation information, estimated levy rates would average \$0.52 per thousand per year of assessed valuation beginning in 2023. The tax rate for construction levies will decrease over time as past bonds are paid off and prior construction levies expire. The exact levy rate shall be adjusted based upon the actual assessed value of the property within the District at the time of the levy.

Further information is available on the district's website at www.lwsd.org.

Exemptions from taxes may be available to homeowners who are 61 or older, or disabled, and who meet certain income requirements. For more information, call the King County Department of Assessments 206-296-3920.

Statement in opposition

Submitted by: Susan Wilkins, info@UnfairSchoolTaxes.com

Proposition 3 asks voters to raise property taxes by \$295,000,000 for construction and property acquisition over 6 years; however, it provides no information about the construction projects being funded. The district's Explanatory Statement says that elementary, high school and three middle school construction projects may occur. Voters deserve to know how their tax dollars will be spent.

In 2016, voters approved a bond measure that built 7 schools. In 2019, a \$120,000,000 six-year levy built major additions at 5 schools. Both ballot measures specifically told voters what projects their taxes would be spent on. This levy provides no such information for voters to evaluate what they are approving.

Last year, LWSU used your tax dollars to purchase 25 acres in Redmond that was part of the Cadman Gravel Pit. The site contains immense piles of construction rubble and mixed fill. Soil samples indicate arsenic contamination (TetraTech ESA). Will your tax dollars be spent on site clean-up and remediation?

Again, with so many families and local businesses struggling to recover under Covid, this is no time to commit to undefined tax increases. This levy fails to tell taxpayers how this property tax increase will be spent. Vote No.

Rebuttal of statement in favor

This proposed 6-year \$295 million levy overlaps the three remaining years of the current six-year construction levy, increasing your total property taxes. It fails to consider the recent enrollment decline due to Covid impacts. Most importantly, unlike previous construction levies and bonds, it fails to provide a specific list of projects making it virtually impossible for voters to evaluate project priorities or to hold the district accountable for the eventual spending. Vote No.

For questions about this measure, contact: Shannon Parthemer, Communications Director, (425) 936-1342, sparthemer@lwsd.org

February 8, 2022 Special Election

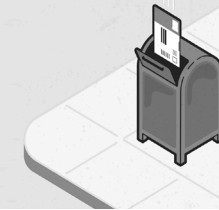
King County Official Local Voters' Pamphlet

as requested by the Lake Washington School District No. 414

Return your ballot by mail. No stamp needed!

We recommend dropping your ballot in the mail by the Friday before Election Day to make sure it gets postmarked in time to be counted.

Ballots must be postmarked by Election Day, February 8.



Ballot drop boxes

All 74 drop boxes across King County will be open for this election. To find the complete list, please see the other pamphlet in your ballot packet or visit kingcounty.gov/elections.

Ballot drop boxes close at 8 p.m. sharp on Election Day, February 8.

Vote Centers

Vote Centers are available for voters that need assistance. Each center has voting machines that offer audio or large print ballots, and other assistive devices. Elections staff are available to assist as needed. Voters can also register to vote and get their ballots at Vote Centers through 8 p.m. on Election Day.

Location

Hours of operation

King County Elections
919 SW Grady Way
Renton, WA 98057

Weekdays, January 19 – February 7, 8:30 a.m. – 4:30 p.m.
Election Day, February 8, 8:30 a.m. – 8:00 p.m.

Access Your Ballot Online

Access and print your ballot online! Those with disabilities or others who choose to do so may mark their selections on the ballot online before printing – or you can choose to print out a blank ballot to mark by hand. Online ballot access has been designed specifically to enable voters who are blind or have low vision to cast a private ballot and is available to all registered voters.

Just print, sign, follow the instructions for packaging, and return as you normally would – by mail or by drop box before boxes close at 8 p.m. sharp on Election Day.

Access your ballot at kingcounty.gov/elections/obmp.

If none of the above voting options work for you, please contact our office.

Register to vote

Online

You can register to vote online at VoteWA.gov -- all you need is two minutes and a Washington State Driver's License or ID. You can register online by January 31 for this election.

By mail

Download and print a registration form from kingcounty.gov/elections and mail it to King County Elections. It must be received by January 31 for this Special election.

In person

You can register in person through February 8, Election Day, at King County Elections headquarters. More information about hours and services can be found at kingcounty.gov/elections



Who donates to campaigns?
View contributors for candidates and measures

Public Disclosure Commission
www.pdc.wa.gov | Toll Free 1-877-601-2828

206-296-VOTE (8683) | elections@kingcounty.gov | kingcounty.gov/elections

919 SW Grady Way
Renton, WA 98057



**Proposition No. 1
Replacement of Existing Educational Programs and Operations Levy**

The Board of Directors adopted Resolution No. 2319 concerning educational funding for student programs and services. This proposition authorizes the District to levy the following excess taxes, to replace an expiring levy, on all taxable property within the District, to support the District's educational programs, staff and operations, which are not funded or not fully funded by the State:

Collection Year	Estimated Levy Rate/\$1,000 Assessed Value	Levy Amount
2023	\$1.03	\$85,600,000
2024	\$1.03	\$89,900,000
2025	\$1.03	\$94,400,000
2026	\$1.03	\$99,100,000

all as provided in the Resolution. Should this proposition be approved?

- Yes
- No

The complete text of this measure is available at the Elections Office or online at kingcounty.gov/elections.

Statement in favor

Submitted by: Penny Sweet, Angela Birney, Karen Moran, Vote4lwsdkids.org

Vote yes to renew our commitment to a quality education for all our students. This measure funds essential services not covered by the state and accounts for 14% of the district's budget. Failure to pass this measure would result in drastic cuts to educational programs, student support, and services.

For example, the state pays for only 5 nurses to cover our 57 schools! Local levy dollars cover the rest. The levy also covers 100% of sports and extracurriculars. It funds special education, the highly capable program, and early childhood education, including preschool and Head Start. These critical programs have been shown to significantly improve student learning and lead to better outcomes after graduating.

We're proud of our Lake Washington students, teachers, and families. We have some of the best schools in the state, with a graduation rate of 94%, high test scores, and robust STEM and career pathway programs. Better schools help build stronger communities, and that's why the voters overwhelmingly passed this measure four years ago. Now it's time to renew our commitment and ensure a quality education for all our students.

Please join community leaders, elected officials, and your neighbors in voting yes for our students!

Rebuttal of statement in opposition

Our community values a high-quality education system. The opposition statement has their facts wrong and doesn't address the substance of this measure. The McCleary Plan doesn't cover nurses, sports and activities, early childhood education, or advanced learning. These are essential staff and programs, and levy failure would directly cut student learning.

This levy renewal covers the amount specifically authorized by the Legislature for local districts and fills critical gaps in state funding. Vote yes.

Explanatory statement

Lake Washington School District requests voter approval of a replacement Educational Programs and Operations levy to enable the District to pay for its educational programs and services not funded by the state and needed to meet the current and future educational programs and services for students. The proposed levy replaces the District's current levy that expires in 2022. This expiring levy currently provides approximately 14% of the general expense of operating the District, and pays for teaching and non-teaching staff, health and safety services, social-emotional supports, early learning programs, transportation, staff professional learning, activities and athletics/sports, additional course offerings, and other non-capital expenses of operating the District schools.

Passage of this proposition would allow the levy of an average of \$92.3 million per year over the next four years. If authorized by the voters and based on current assessed valuation information, the estimated levy rate per \$1,000 of assessed value would be \$1.03 beginning in 2023. This replaces an expiring levy. The district is limited to collecting only what the state legislature authorizes. The exact levy rate shall be adjusted based upon the actual assessed value of the property within the District and the limitations imposed by State law at the time of the levy.

Further information is available on the district's website at www.lwsd.org. Exemptions from taxes may be available to homeowners who are 61 or older, or disabled, and who meet certain income requirements. For more information, call the King County Department of Assessments 206-296-3920.

For questions about this measure, contact: Shannon Parthemer, Communications Director, (425) 936-1342, sparthemer@lwsd.org

Statement in opposition

Submitted by: Susan Wilkins, UnfairSchoolTaxes.com

Proposition 1 is excessive and should be rejected. It does not replace the current levy; it increases it by over 26%.

Under the 2017 McCleary Plan, the State dramatically increased property taxes to fully fund Basic Education and specifically limited future local EP&O levies to "Enrichment" expenses. This year another major McCleary tax increase goes into effect (\$.90 per thousand assessed valuation -- \$1000 increase to the median homeowner). You and every other homeowner, renter and business will be paying that bigger tax bill in just a few weeks.

This year the McCleary property taxes you pay will provide LWSO over \$130,000,000 more in state funds than it did in 2017. Even if individual property taxes were not increased, the LWSO budget grows due to new homes, apartments and commercial development. With families and small businesses suffering the loss of family members and employees, increased illness and medical risk, unemployment, lost revenue or bankruptcy due to Covid, this is no time for a 26% tax increase.

We all want good schools and we all need affordable and sustainable property taxes. Reject this excessive Proposition and require the district to fit their "Wish List" into a "No Tax Increase" Proposition.

Rebuttal of statement in favor

Get the facts: Proposition 1 cannot fund Basic Education programs covered by the State. It cannot pay for Special Education and programs for students with disabilities already funded by the McCleary Plan. And remember, the McCleary tax permanently increases 33% to \$3.60 per thousand this year.

This levy can fund extra nurses, sports, preschool, security, extended day – but the 26% increase to \$85-\$99,000,000 per year is excessive. You deserve affordable property taxes. Vote No.

**Proposition No. 2
Replacement of Existing Technology and Capital Projects Levy**

The Board of Directors adopted Resolution No. 2320 for educational technology and facilities levies. This proposition authorizes the District to levy the following excess taxes, to replace an expiring levy, on all taxable property within the District, to support improvement and upgrades of facilities; including educational technology, software and training; building systems, health and safety and site improvements throughout the District:

Collection Year	Estimated Levy Rate/\$1,000 Assessed Value	Levy Amount
2023	\$0.49	\$41,100,000
2024	\$0.49	\$43,200,000
2025	\$0.49	\$45,300,000
2026	\$0.49	\$47,500,000

all as provided in the Resolution. Should this proposition be approved?

- Yes
- No

The complete text of this measure is available at the Elections Office or online at kingcounty.gov/elections.

Statement in favor

Submitted by: Penny Sweet, Angela Birney, Karen Moran, Vote4lwsdkids.org

Vote yes to renew the technology and capital projects levy. All students deserve access to high quality education regardless of background or family income.

Preparing students to succeed after graduation requires access to modern technology. This measure provides nearly 100% of the funding to maintain the district's 1:1 student-to-device ratio. Technology funds include online platforms to help students excel outside of the classrooms, as well as critical technology infrastructure such as digital whiteboards, and training for classroom instruction.

Prop. 2 also funds critical facility maintenance including code compliance and improvements such as roof repairs, HVAC, fire alarms systems, and health, safety and security upgrades across the district. Failure to pass would result in deferred maintenance and would only cost more money down the road. This is a fiscally responsible measure to protect our investments in our schools. Renewing this levy keeps our students warm, dry, and safe.

This measure was passed overwhelmingly by the voters four years ago. Please join community leaders, elected officials, and your neighbors in voting yes for critical building maintenance and classroom technology!

Rebuttal of statement in opposition

This measure is a replacement of an expiring levy that will maintain the same tax rate. Lake Washington SD delivers top-tier education at a lower rate than comparable districts like Northshore or Bellevue. These levy funds were used when schools closed to address many needs like transitioning to remote learning, including ensuring that every student had access to a device. It funds facility and technology needs not covered by the state. Vote yes.

Explanatory statement

Lake Washington School District requests voter approval of a replacement School Technology and Capital Projects levy to enable the district to pay for computers for students, classroom technology, improvements and upgrades of school facilities, for technology improvements, and equipment and training not funded by the state and needed to meet the current and future educational programs for its students. The proposed levy replaces the District's current levy that expires in 2022 and funds would be deposited in the Capital Projects Fund to pay for replacement computers; upgraded server and network infrastructure; instructional and assessment software; technology support for over 35,000 student and staff computers; health and safety upgrades; and replacement of aging major building systems such as roofs and heating systems.

Passage of this proposition would allow the levy of an average of \$44.3 million per year over the next four years. If authorized by the voters and based on current assessed valuation information, estimated levy rates per \$1,000 of assessed value would be \$0.49 beginning in 2023. This replaces an expiring levy. The exact levy rate shall be adjusted based upon the actual assessed value of the property within the District at the time of the levy.

Further information is available on the district's website at www.lwsd.org. Exemptions from taxes may be available to homeowners who are 61 or older, or disabled, and who meet certain income requirements. For more information, call the King County Department of Assessments 206-296-3920.

For questions about this measure, contact: Shannon Parthemer, Communications Director, (425) 936-1342, sparthemer@lwsd.org

Statement in opposition

Submitted by: Susan Wilkins, (425) 374-6655

Again, LWSO asks you to replace a levy but in fact they make it a 21% tax increase over 4 years. While we need to continue some level of Facilities and Technology funding, we also need to ensure taxpayers are getting affordable and sustainable property taxes.

The pandemic closed down schools for more than a year reducing normal wear and tear that would have occurred. Some routine maintenance was essential, but significant spending on repairs and upgrades did not occur. Between reduced facility usage and an increase in building maintenance funds from the state's McCleary school funding, lower tax collections for 2023 and 2024 are in order as a refund for 2020 and 2021 taxes already paid.

Families and local businesses have been stretched thin financially during the pandemic and are also about to be hit hard by this year's huge McCleary property tax increase. This is no time for a tax increase for Facilities and Technology.

Vote No on this levy and send a message to the district that their proposed property taxes are too high. Tell them to run a reduced Facilities and Technology levy in April that is more reasonable.

Rebuttal of statement in favor

Again, the district abuses public goodwill by disguising a tax increase as a "simple renewal". Voters deserve honesty. With this year's permanent tax increase and the struggles of families and local businesses with Covid, voters need an affordable levy. We can keep our students warm, dry and safe with an honest, No Tax Increase levy proposal. Defeating this levy will require the district to offer an affordable levy. Proposition 2 is excessive – vote No.