

# King County General Fund Gap Explained

1

The King County General Fund supports local and regional services for 2.1 million residents.



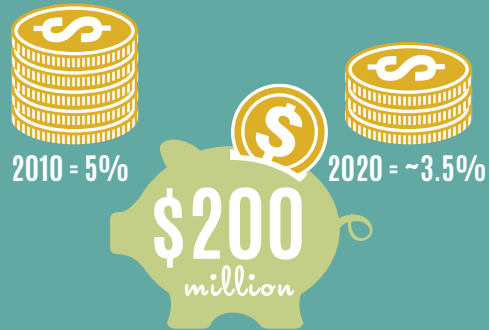
2

The cost of providing services increases about 3.5% annually (inflation plus population growth). But state law limits property tax revenue growth to just 1%, creating a structural gap.



3

King County's efficiency efforts have reduced the General Fund cost curve from 5% to about 3.5% for a savings of \$200 million.



6

If the state legislature fixed the property tax limit, it would cost the typical homeowner\* in King County about

**\$9** a year

to continue protecting public health and safety.

(\*\$416k home)

5

Until the structural gap is fixed, King County will have to cut critical services.



General Fund Expenditures

4

However, the long-term structural gap still contributes to a \$50 million shortfall in the 2017/2018 General Fund budget.

**\$50** million  
GAP