



AIMs High Uses Maps to Compare Differences across the County

This year's AIMs High website uses more maps than ever before to show how community conditions and performance results can vary across different regions within King County. King County's [Equity and Social Justice](#) principle in the KCSP inspires us to understand inequities in our community and our service delivery. Maps are one method of disaggregating information to understand where inequities exist so that we can better direct policies and services to promote equity and social justice.

Why do map areas vary?

AIMs High maps divide King County into multiple sub-regions. This is because the data behind each map comes from different sources with different data collection methodologies and measurement purposes. AIMs High combines geographic data produced for a variety of purposes to create a comprehensive picture of geographic variation within the County. Examples of geographic sub-regions used in AIMs High maps include: city limits, health reporting areas, zip codes, census tracts, and property parcels. The following data sources are the basis for the maps presented in AIMs High:

Mapping King County Resident Perspectives

This year's King County Resident Survey, conducted in April and May of 2012, was designed to separate the responses of residents in seven distinct regions of the county to enable comparison and analysis by creating statistically significant groups. Six of the regions were formed by splitting urban unincorporated areas, rural unincorporated areas and incorporated areas outside the city of Seattle into "North and East" and "South" regions. The City of Seattle is the seventh region. [Download the full results for the survey](#) - 20MB PDF.

Details of the King County Resident Survey: More than 125 responses were gathered from each of the seven regions and more than 250 responses were collected from Seattle. The results for the City of Seattle have a precision of at least +/- 6.2% at the 95% level of confidence and the results for each of the other six areas have a precision of at least +/- 8.7% at the 95% level of confidence. This means that if the entire survey process was repeated 100 times, we expect that the average response within the regions would be within 6.2%/8.7% of this year's average 95 of the 100 times. Surveys were administered in English, Spanish, and Mandarin Chinese. Of the 3,000 households that were selected to receive the survey, 266 completed the survey by mail and 759 completed the survey by phone for a total of 1,025 completed surveys (King County's population is about 1.9 million people).

Mapping King County Health Outcomes

Community Health Data is presented geographically based on Health Reporting Areas (HRAs). In 2011, 48 new HRAs were created to coincide with city boundaries, in order to aid in considering issues related to local health status or health policy. Where possible, neighborhoods are defined within large cities. Outside of cities, unincorporated areas of King County are delineated. For data reliability, some areas were combined. HRAs are used whenever there is sufficient sample size to present the data.

Mapping U.S. Census Information

Some AIMs High data are presented geographically based on U.S. Census information. Census tracts are small, relatively permanent statistical subdivisions of a county or equivalent entity. The primary purpose of census tracts is to provide a stable set of geographic units for the presentation of statistical data.

Census tracts generally have a population size between 1,200 and 8,000 people, with an optimum size of 4,000 people. A census tract usually covers a contiguous area; however, the spatial size of census tracts varies widely depending on the density of settlement. Census tract boundaries are delineated with the intention of being maintained over a long time so that statistical comparisons can be made from census to census. Census tracts occasionally are split due to population growth or merged as a result of substantial population decline.

Mapping Land Use

Several AIMs High maps show geography based on land use. The land use categories are [Comprehensive Plan](#) land use designations. Each map shows different characteristics of the land use, with the legend providing information about what characteristics and boundaries are included in the particular map.

Complete List of all AIMs High maps

2012 King County Resident Survey Regions

Data Source: ETC Institute and the King County Office of Performance Strategy and Budget

Where to Find this Map: [Economy and Infrastructure Transportation Objective](#)

[Justice and Safety Keep People Safe Objective](#)

[Justice and Safety Proactive Law Enforcement Strategy](#)

[Justice and Safety Fair and Accessible Justice Objective](#)

[Public Engagement Public Awareness Objective](#)

[Service Excellence Customer Satisfaction Objective](#)

[Service Excellence Access Services Objective](#)

Adolescent Birth Rates

Data Source: Washington State Department of Health

Where to Find this Map: [Health and Human Potential Prevention Strategy](#)

Agriculture and Forest Lands 2012

Data Source: U.S. Forest Service, King County Department of Permitting and Environmental Review, King County Department of Natural Resources and Parks, and King County Department of Assessments

Where to Find this Map: [Environmental Sustainability Agriculture and Forestry Objective](#)

Areas without Access to Healthy Food

Data Source: USDA

Where to Find this Map: [Health and Human Potential Community Health Objective](#)

[Health and Human Potential Health Policy Strategy](#)

Average Number of Poor Physical or Mental Health Days in Last 30 Days

Data Source: Washington State Department of Health

Where to Find this Map: [Health and Human Potential Integrated Services Objective](#)

Average Unemployment Rate

Data Source: 2006 -2010 American Community Survey

Where to Find this Map: [Economy and Infrastructure Strong Economy Objective](#)

Communities Inside Urban Growth Boundary Within Quarter Mile of Park, Open Space or Trail

Data Source: Analysis from King County GIS Center

Where to Find this Map: [Economy and Infrastructure Built Environment Objective](#)

[Health and Human Potential Health Policy Strategy](#)

Healthy Food Access

Data Source: Analysis from King County GIS Center

Where to Find this Map: [Health and Human Potential Community Health Objective](#)

HIV Incidence Rate

Data Source: Public Health - Seattle & King County HIV/AIDS Registry Data

Where to Find this Map: [Health and Human Potential Health Education Strategy](#)

King County's Open Space System 2012

Data Source: King County Department of Natural Resources and Parks, Water and Land Resources Division

Where to Find this Map: [Economy and Infrastructure Parks, Trails, Open Space Strategy](#)

[Environmental Sustainability Ecosystems Objective](#)

[Environmental Sustainability Land Acquisition Strategy](#)

Land Use 2012

Data Source: Department of Permitting and Environmental Review

Where to Find this Map: [Economy and Infrastructure Rural Communities Objective](#)

[Economy and Infrastructure Rural Growth Strategy](#)

Low Income & Minority Census Tracts In Proximity To Transit Routes

Data Source: King County Metro

Where to Find this Map: [Economy and Infrastructure Transportation Needs Strategy](#)

Means of Transportation to Work: Percent Carpool

Data Source: 2006 -2010 American Community Survey

Where to Find this Map: [Environmental Sustainability Pollution and Health Strategy](#)

Means of Transportation to Work: Percent Drove Alone

Data Source: 2006 -2010 American Community Survey

Where to Find this Map: [Environmental Sustainability Pollution and Health Strategy](#)

Means of Transportation to Work: Percent Public Transit

Data Source: 2006 -2010 American Community Survey

Where to Find this Map: [Environmental Sustainability Pollution and Health Strategy](#)

Means of Transportation to Work: Percent Walk & Bike

Data Source: 2006 -2010 American Community Survey

Where to Find this Map: [Environmental Sustainability Pollution and Health Strategy](#)

Means of Transportation to Work: Percent Worked at Home

Data Source: 2006 -2010 American Community Survey

Where to Find this Map: [Environmental Sustainability Pollution and Health Strategy](#)

Median Household Income

Data Source: 2006 -2010 American Community Survey

Where to Find this Map: [Economy and Infrastructure Strong Economy Objective](#)

Percent Adult Smokers

Data Source: Washington State Department of Health

Where to Find this Map: [Health and Human Potential Premature Death Strategy](#)

Percent Adults with No Influenza Immunization

Data Source: Washington State Department of Health

Where to Find this Map: [Health and Human Potential Premature Death Strategy](#)

Percent Adults with No Pneumonia Immunization

Data Source: Washington State Department of Health

Where to Find this Map: [Health and Human Potential Premature Death Strategy](#)

Percent Below 200% of Federal Poverty

Data Source: 2006 - 2010 American Community Survey

Where to Find this Map: [Health and Human Potential Integrated Services Objective](#)

Percent Exposed to Noise Pollution Along High Volume Roadways

Data Source: King County Department of Assessments

Where to Find this Map: [Health and Human Potential Community Health Objective](#)

Percent of Adults Who Did Not See a Doctor Due To Cost

Data Source: Washington State Department of Health

Where to Find this Map: [Health and Human Potential Access to Care Strategy](#)

Percent of Births That Are Low Birthweight

Data Source: Washington State Department of Health

Where to Find this Map: [Health and Human Potential Prevention Strategy](#)

Percent of High Risk Code Enforcement 7 Day Response

Data Source: Department of Permitting and Environmental Review

Where to Find this Map: [Justice and Safety Code Enforcement Strategy](#)

Percent of Households Spending 30% and More of Income on Housing

Data Source: 2006 -2010 American Community Survey

Where to Find this Map: [Economy and Infrastructure Built Environment Objective](#)

Percent of Overweight or Obese Adults

Data Source: Washington State Department of Health

Where to Find this Map: [Health and Human Potential Premature Death Strategy](#)

Percent of Women Giving Birth With Late or No Prenatal Care

Data Source: Washington State Department of Health

Where to Find this Map: [Health and Human Potential Health Education Strategy](#)

Percent Overweight or Obese Students

Data Source: Washington State Healthy Youth Survey

Where to Find this Map: [Health and Human Potential Premature Death Strategy](#)

Percent Student Smokers

Data Source: Washington State Healthy Youth Survey

Where to Find this Map: [Health and Human Potential Premature Death Strategy](#)

Rate of Asthma Hospitalization

Data Source: Washington State Department of Health

Where to Find this Map: [Health and Human Potential Safe Food, Water, and Air Strategy](#)

Rate of Infant Mortality

Data Source: Linked Birth/Death Certificate Data: Washington State Department of Health

Where to Find this Map: [Health and Human Potential Children and Youth Objective](#)

Retail Food Environment Index

Data Source: InfoUSA, 2/2010

Where to Find this Map: [Health and Human Potential Community Health Objective](#)
[Health and Human Potential Health Policy Strategy](#)

Sexually Transmitted Disease Rate: Chlamydia in Females

Data Source: Public Health - Seattle & King County STD Report Records

Where to Find this Map: [Health and Human Potential Health Education Strategy](#)

Sexually Transmitted Disease Rate: Gonorrhea in Females

Data Source: Public Health - Seattle & King County STD Report Records

Where to Find this Map: [Health and Human Potential Health Education Strategy](#)

Sexually Transmitted Disease Rate: Gonorrhea in Males

Data Source: Public Health - Seattle & King County STD Report Records

Where to Find this Map: [Health and Human Potential Health Education Strategy](#)

Unintentional Injury Death Rate

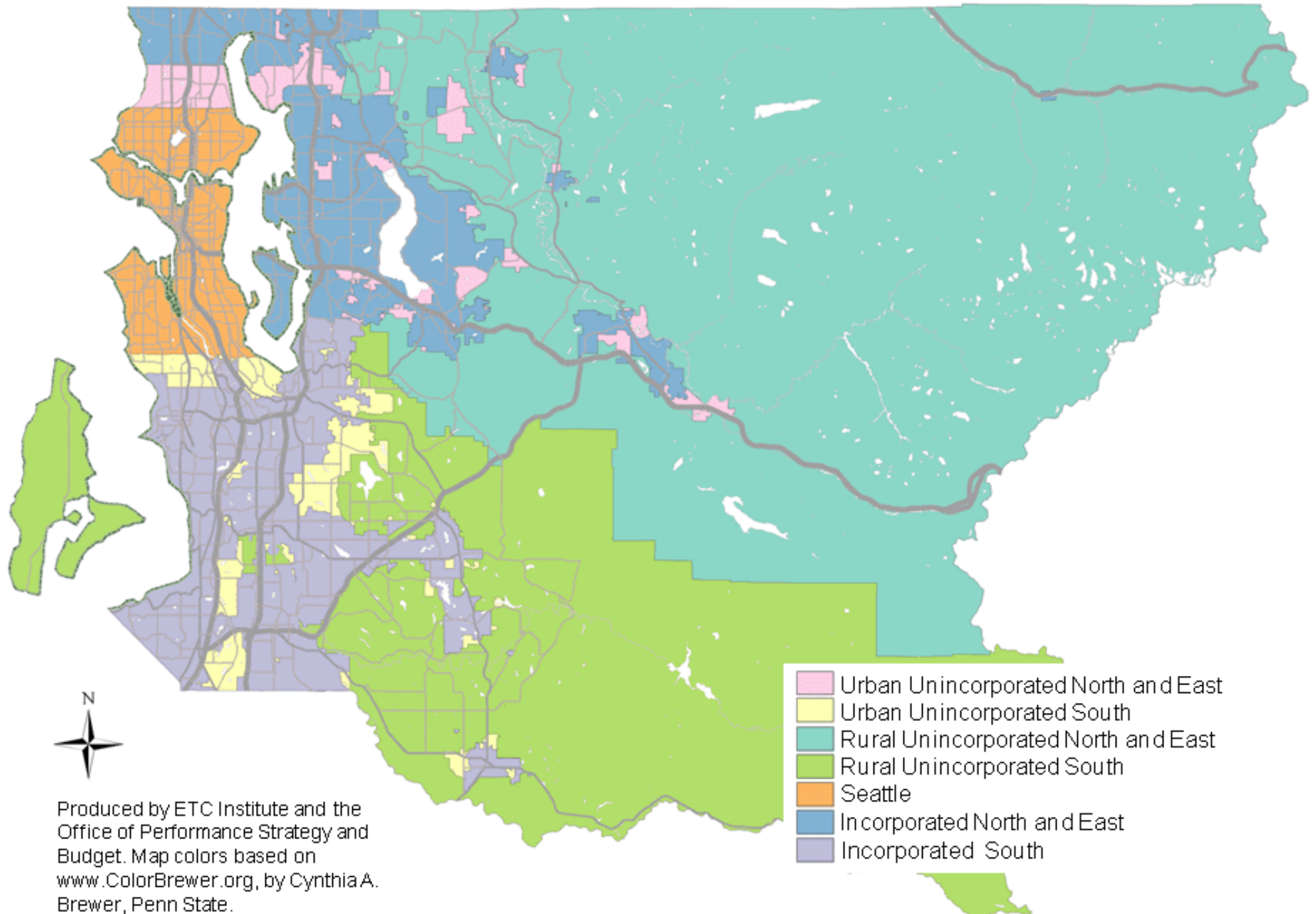
Data Source: Washington State Department of Health

Where to Find this Map: [Health and Human Potential Premature Death Strategy](#)

Other King County Map Websites

- [King County Demographics](#)
- [Land Use and Comprehensive Planning](#)
- [Public Health Community Health Indicators](#)
- [DNRP Equity and Social Justice Program](#)
- [KCGIS Center Maps](#)

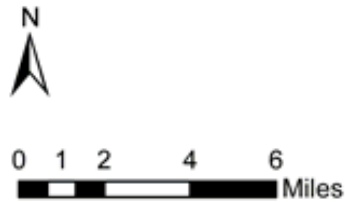
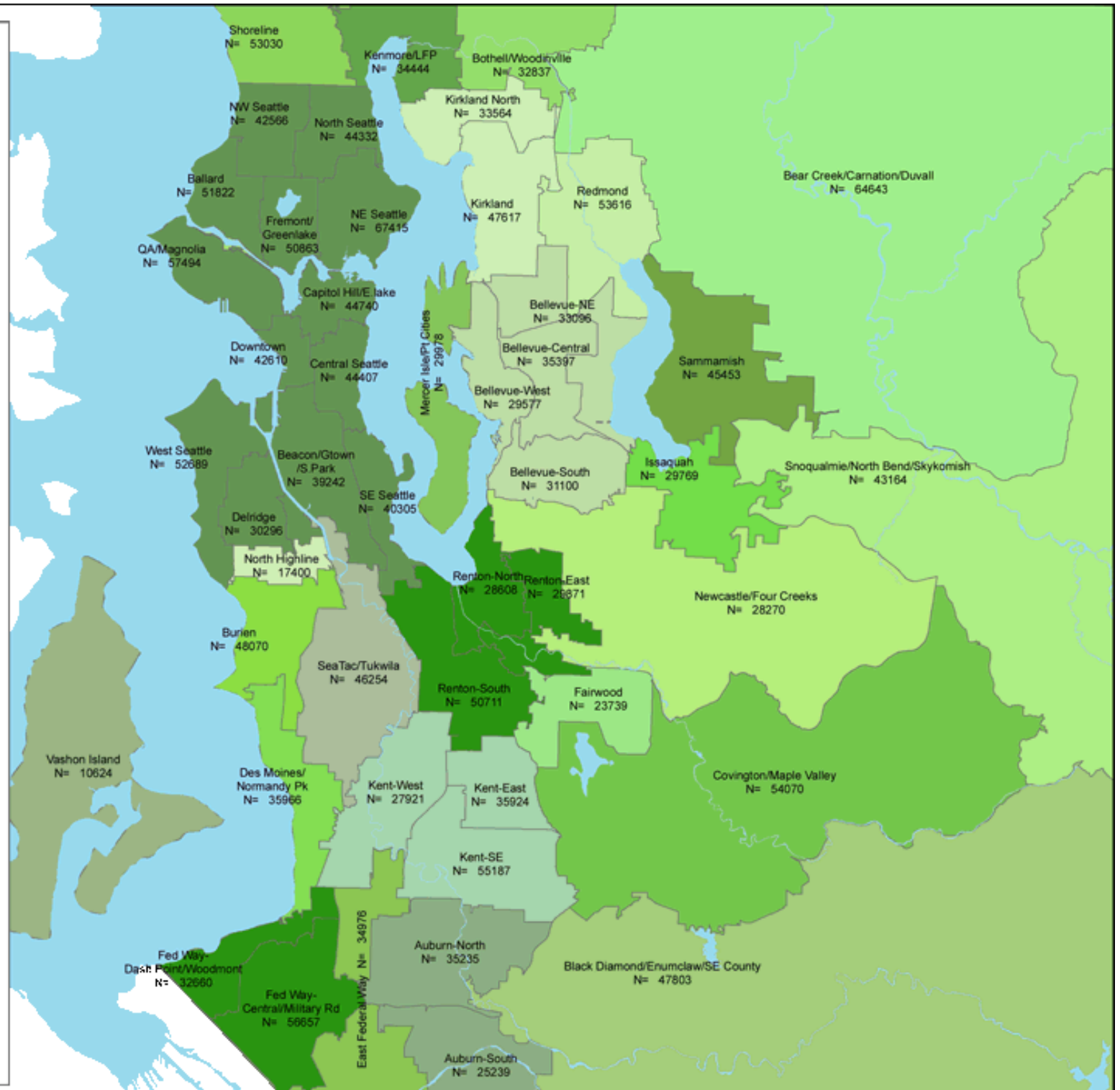
2012 King County Resident Survey Regions



Produced by ETC Institute and the Office of Performance Strategy and Budget. Map colors based on www.ColorBrewer.org, by Cynthia A. Brewer, Penn State.

Health Reporting Areas (HRA) and 2010 population King County, WA

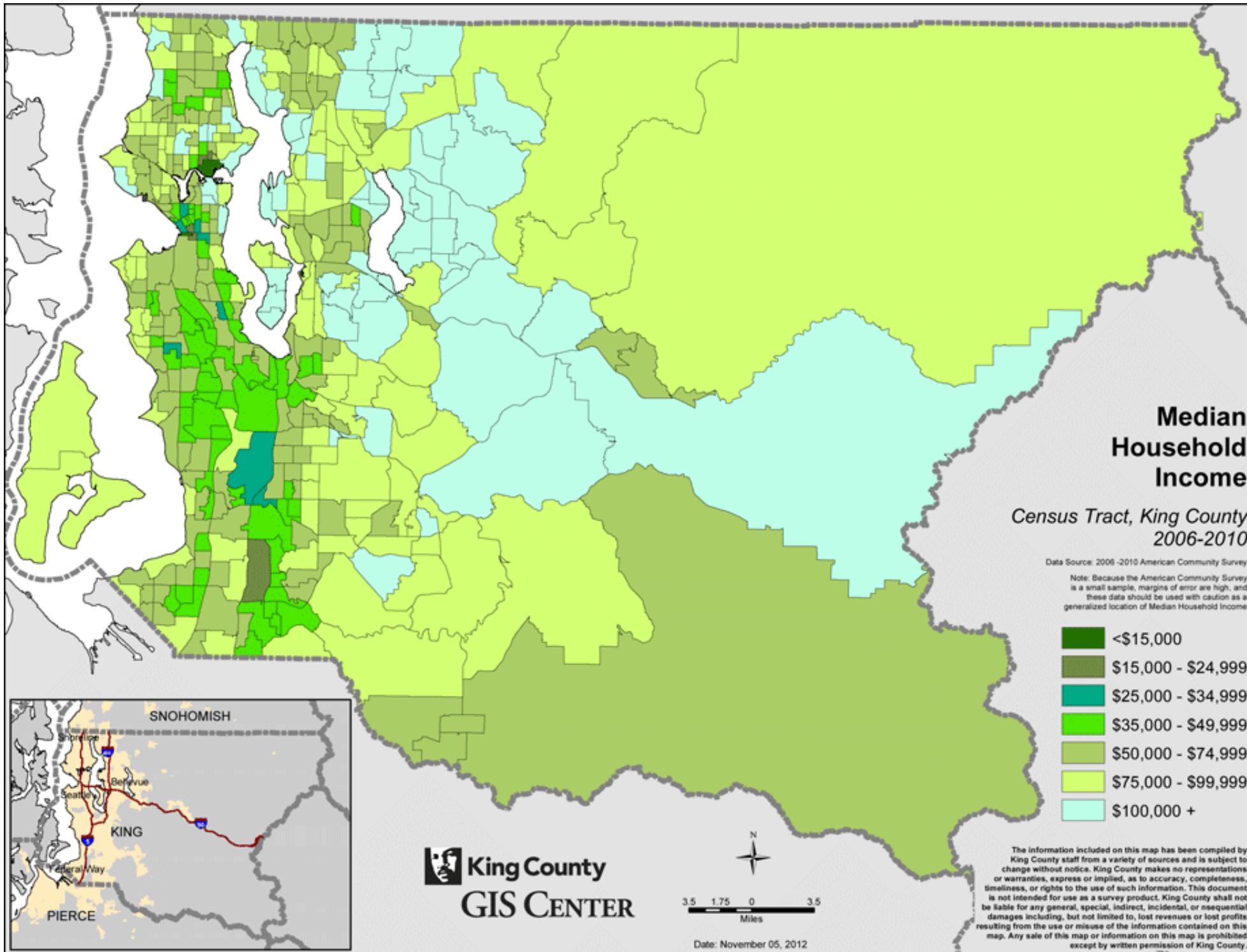
Auburn, Bellevue, Federal Way, Kent, Renton & Seattle HRAs are divided into neighborhoods.

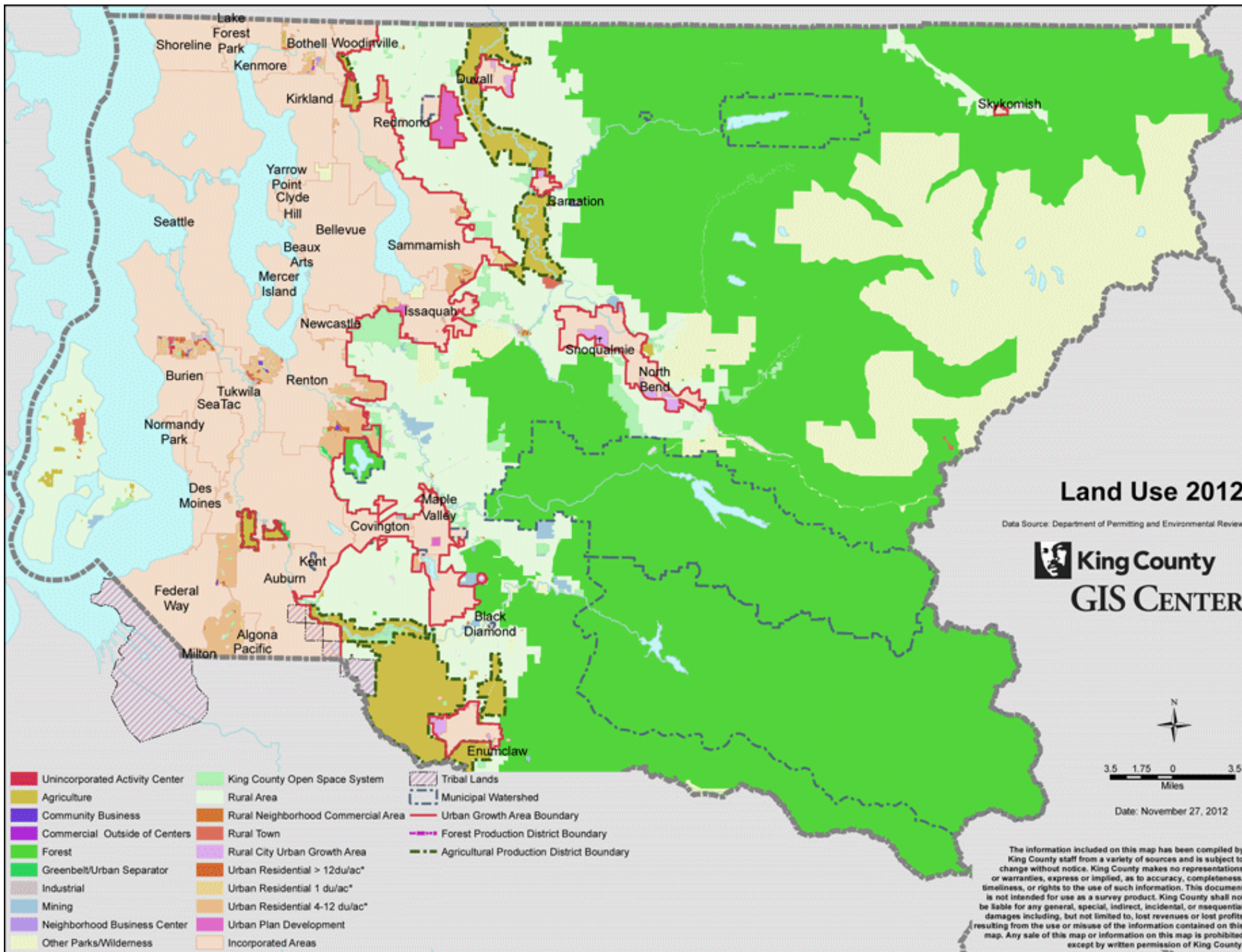


N = 2010 population for each HRA
 Data source: Intermin Population estimates, PHSKC, APDE 1/2012

Produced by: Public Health-Seattle & King County Assessment, Policy Development & Evaluation

Last Modified 08/2012





- | | | |
|--------------------------------|------------------------------------|---|
| Unincorporated Activity Center | King County Open Space System | Tribal Lands |
| Agriculture | Rural Area | Municipal Watershed |
| Community Business | Rural Neighborhood Commercial Area | Urban Growth Area Boundary |
| Commercial Outside of Centers | Rural Town | Forest Production District Boundary |
| Forest | Rural City Urban Growth Area | Agricultural Production District Boundary |
| Greenbelt/Urban Separator | Urban Residential > 12du/ac* | |
| Industrial | Urban Residential 1 du/ac* | |
| Mining | Urban Residential 4-12 du/ac* | |
| Neighborhood Business Center | Urban Plan Development | |
| Other Parks/Wilderness | Incorporated Areas | |