

PLAN OF OPERATIONS

**THE RECYCLING DEPOT
6004 CORSON AVENUE SOUTH
SEATTLE, WASHINGTON**

**Submitted by:
Farallon Consulting, L.L.C.
975 5th Avenue Northwest
Issaquah, Washington 98027**

Farallon PN: 2325-001

**For:
The Recycling Depot, Inc.
6004 Corson Avenue South
Seattle, Washington 98108**

March 1, 2022

Prepared by:



Lisa Thompson, E.I.T.
Staff Engineer



Eric Buer, L.G., L.H.G., P.G.
Principal Hydrogeologist

Reviewed by:



Suzy Stumpf, P.E.
Principal Engineer



Stacy D. Patterson
Principal Environmental Scientist



TABLE OF CONTENTS

ACRONYMS AND ABBREVIATIONS	ii
1.0 INTRODUCTION	1-1
1.1 FACILITY DESCRIPTION	1-1
1.2 LAND USE.....	1-1
1.3 TOPOGRAPHY, CRITICAL AREAS, AND STORMWATER MANAGEMENT.....	1-1
1.4 PHYSICAL AND MAILING ADDRESSES	1-2
1.5 PERMIT HOLDER, FACILITY OWNER, AND OPERATOR.....	1-2
1.6 FACILITY DESCRIPTION	1-2
1.6.1 Facility Access, Hours of Operation, and Signage	1-3
1.6.2 Facility Plan	1-4
2.0 PLAN OF OPERATION	2-1
2.1 WASTE MATERIAL DESCRIPTIONS.....	2-1
2.2 WASTE ACCEPTANCE PROCEDURES.....	2-2
2.3 WASTE HANDLING AND SEGREGATION	2-3
2.3.1 Handling.....	2-3
2.3.2 Segregation	2-3
2.3.3 Limited Moderate Risk Waste	2-3
2.3.4 Universal Waste	2-3
2.3.5 Non-PCB Containing Ballasts and Capacitors	2-3
2.3.6 Electronic Waste	2-4
2.3.7 Facility Steel Pile.....	2-4
2.4 MATERIAL REMOVAL.....	2-4
2.4.1 Specific E-waste Handling.....	2-5
2.4.2 Specific Limited Moderate Risk Waste (spent lead acid battery) Handling.....	2-5
2.4.3 Universal Waste – Waste Batteries Handling.....	2-5
2.5 FACILITY CONTROLS	2-5
2.5.1 Litter, Dust, and Nuisance Odors.....	2-5
2.5.2 Rodents, Insects, and Other Vectors	2-6
2.6 SPILL KIT LOCATIONS.....	2-6
3.0 INSPECTIONS AND MAINTENANCE	3-1
3.1 INSPECTIONS.....	3-1
3.2 RECORDS AND REPORTING.....	3-1
3.2.1 Annual Reporting.....	3-1
3.2.2 Recordkeeping	3-2
4.0 SAFETY AND EMERGENCY RESPONSE	4-1
4.1 EMERGENCY PREPAREDNESS	4-1



4.2	EMERGENCY CONTACT INFORMATION.....	4-1
4.3	EMERGENCY CONTACT PROCEDURES.....	4-2
4.4	EMERGENCY SPILL RESPONSE PLAN – IMMEDIATE ACTIONS	4-2
4.5	SPILL CLEANUP AND DISPOSAL PROCEDURES.....	4-3
4.6	FIRE AND SAFETY EQUIPMENT	4-3
4.7	SPILL REPORTING REQUIREMENTS.....	4-3
	4.7.1 Agency Reporting	4-3
5.0	CLOSURE PLAN	5-1
5.1	NOTIFICATION	5-1
5.2	WASTE REMOVAL	5-1
5.3	FINANCIAL ASSURANCE	5-1
6.0	REFERENCES.....	6-1

FIGURES

Figure 1 *Property Vicinity Map*

Figure 2 *Site Plan*

APPENDICES

Appendix A *Facility Permits and Notifications*

Appendix B *Engineering Design*

Appendix C *Annual Reports*

Appendix D *Signage and Flyer*

Appendix E *Facility Inspection Forms*



ACRONYMS AND ABBREVIATIONS

BOL	bill of lading
Ecology	Washington State Department of Ecology
e-waste	electronic waste
Farallon	Farallon Consulting L.L.C.
Facility	the recycling facility located on the real property comprising King County Parcel No. 6920700060 with a street address of 6004 Corson Avenue South in Seattle, Washington
The Recycling Depot	The Recycling Depot, Inc.
SEPA	State Environmental Policy Act
WAC	Washington Administrative Code



1.0 INTRODUCTION

Farallon Consulting, L.L.C. (Farallon) has prepared this Plan of Operations on behalf of The Recycling Depot, Inc. (The Recycling Depot) for the property at 6004 Corson Avenue South in Seattle, Washington (herein referred to collectively as the Facility) (Figure 1) to meet the requirements of Section 320(6) of Chapter 173-350 of the Washington Administrative Code (WAC 173-350-320(6)). The Plan of Operations contains information regarding the Facility location and access, waste materials, and recyclables management procedures; Facility controls; inspection and maintenance requirements and procedures; emergency plans; and closure plans.

The Plan of Operations provides guidance for outdoor storage or treatment of solid waste in piles of recyclable materials. The Recycling Depot also accepts and handles spent lead acid batteries as a limited moderate risk waste in accordance with WAC 173-350-360(2) Moderate risk waste handling – Permit exemption, and electronic waste (e-waste) in accordance with the Washington State Department of Ecology (Ecology) Interim Enforcement Policy, Conditional Exclusion for Electronic Wastes.

1.1 FACILITY DESCRIPTION

The Facility is on King County Parcel No. 6920700060, which totals 0.60 acre of land. The Facility is bordered to the north by South Vale Street, to the east by an industrial property, to the south by South Harney Street, and to the west by Corson Avenue South (Figure 1). The Facility is primarily used for staging and sorting metals for recycling. Structures on the Facility include a scale house, mobile offices, and equipment sheds; all located on the western portion of the Facility (Figure 2). Adjacent properties include an automotive body repair shop to the north, an industrial property to the east, a hotel to the south, and a commercial strip mall to the west.

1.2 LAND USE

The Facility is zoned for general industrial use (Seattle Department of Construction Inspections Code IG2 U/85). The Recycle Depot submitted applications for permitted land use to the Seattle Department of Construction Inspections under record number 6778390-CN on July 20, 2020 and is undergoing review.

1.3 TOPOGRAPHY, CRITICAL AREAS, AND STORMWATER MANAGEMENT

The Facility topography is primarily flat with less than 1 foot of vertical relief. The ground surface elevation is approximately 20 feet North American Vertical Datum of 1988. The Facility and the surrounding vicinity are identified as a Critical Area ECA5 for potential liquefaction.

The Facility is nearly entirely paved with concrete and asphalt, with the exception of some relatively small planter areas near the southwestern corner and a narrow unpaved strip along a portion of the Facility's east boundary. The rights-of-way on the west and south Facility boundaries are paved with sidewalk, curb, gutter, and roadway. An approximately 9-foot-wide



gravel-surfaced shoulder is present north of the Facility boundary on the southern side of the South Vale Street right-of-way.

Stormwater runoff is conveyed via surface and shallow concentrated flows to existing on-site and adjacent off-site points of collection. On-site points of collection include an area drain, and the recessed equipment well of the on-site truck scale. Off-site points of collection are Seattle Public Utilities combined storm drainage and sanitary sewer catch basins, located at the corner of Corson Avenue South and South Vale Street, and Corson Avenue South and South Harney Street. From the combined storm drainage and sanitary sewer catch basins, runoff is conveyed in combined sanitary and stormwater conveyance pipes to treatment at a King County wastewater treatment plant.

1.4 PHYSICAL AND MAILING ADDRESSES

The Facility street address is:

The Recycling Depot, Inc.
6004 Corson Avenue South
Seattle, Washington 98108

The Facility's mailing address for business and other correspondence is:

The Recycling Depot, Inc.
6004 Corson Avenue South
Seattle, Washington 98108

1.5 PERMIT HOLDER, FACILITY OWNER, AND OPERATOR

This Plan of Operations was prepared on behalf of The Recycling Depot. The Recycling Depot has applied for, or currently holds, the following permits in connection with the Facility:

- King County Solid Waste Permit No. [Number to be issued]; and
- City of Seattle Department of Construction and Inspections Permit No. [Number to be issued].

Names, certificate or certifications, and licenses for Facility operators are posted in the mobile offices. Permits related to Facility operations will be included in Appendix A.

1.6 FACILITY DESCRIPTION

The primary activities on the Facility are associated with collection, segregation, and transportation of consumer products and waste materials for recycling that include ferrous and



non-ferrous metals, mixed metal scrap, lead acid batteries, catalytic converters, and other recyclables.

Specific activities conducted on the Facility include:

- Transfer of materials for recycling, including weighing and unloading individual and commercial vehicles;
- Collection, sorting, and storage of recyclable materials;
- Processing of scrap steel by baling and shearing steel into saleable products;
- Sorting and/or partially disassembling combined metal products, small motors, and automotive parts for recycling;
- Storage of sorted materials in segregated containers and/or piles prior to transport; and
- Loading of bins and commercial vehicles with sorted or processed materials for transport to other facilities.

Electronics are accepted from households (e.g. households and conditionally exempt small quantity generators (CESQGs) per WAC 173-350-360 and small quantity generator (SQGs) per WAC 173-303) and handled and recycled in accordance with the Ecology Interim Enforcement Policy, Conditional Exclusion for Electronic Wastes.

1.6.1 Facility Access, Hours of Operation, and Signage

The Facility is secured and fenced on all sides with 6-foot-high chain-link fencing topped with three strands of barbed wire to prevent unauthorized access and illegal dumping. Entrance and exit gates are on the southern and northern boundaries of the Facility, respectively. Access gates are closed and locked during all non-business hours. Business is conducted on the Facility 7 days a week between the hours of 8:30 a.m. and 4:30 p.m. Signage identifying The Recycling Depot and providing a contact phone number is posted at the south entrance gate.

Vehicle traffic is restricted to entering from South Harney Street south of the Facility and exiting onto South Vale Street north of the Facility. Vehicle traffic is restricted to the western portion of the Facility.

The Facility is paved with a mix of concrete and asphalt that can be cleaned as needed and provides an all-weather surface for vehicles and prevents potential contamination of Facility soils and groundwater. A 9-foot-wide gravel median is present north of the Facility boundary on the south side of South Vale Street. Engineering drawings of the Facility are provided in Appendix B.



1.6.2 Facility Plan

The Facility operations include the use of multiple containers for storage of waste materials, segregated recyclable products, and sorted metals. Primary operational features for the Facility include:

- Two 40-foot shipping containers for accumulation of materials to be sent to overseas facilities;
- A 4-foot-high loading dock for loading commercial vehicles;
- Vehicle scales for weighing vehicles and recyclable materials entering and exiting the Facility;
- Stationary bins for sorted materials including white goods, “irony” aluminum, old sheet aluminum, and other non-ferrous materials;
- A steel pile;
- A metal shearing station, compactor, and multiple baler stations;
- Covered storage for oil, propane, and other equipment;
- Covered storage for e-waste; and
- Covered storage for spent lead acid batteries.

Detailed Facility plans are shown on Figure 2.



2.0 PLAN OF OPERATION

This section addresses requirements of WAC 173-350-040, Performance Standards; WAC 173-350-210(6), Recycling and Material Recovery Facilities – Permit Requirements – Operating; WAC 173-350-320(6), Piles used for storage or treatment – Permit Requirements – Operating. Details are provided to describe waste materials, segregated recyclable products, and sorted metals handled on the Facility; the procedures for screening and accepting waste materials, segregated recyclable products, and sorted metals; and descriptions of how waste materials, segregated recyclable products, and sorted metals are handled on the Facility.

The Recycling Depot is an exempt limited moderate risk waste handling facility and operates in accordance with WAC 173-350-360(2). The only moderate risk waste accepted at The Recycling Depot is spent lead acid batteries from households, CESQGs, and SQGs; therefore, The Recycling Depot is exempt from a moderate risk waste handling permit. In addition, The Recycling Depot manages and recycles e-waste in accordance with the Ecology Interim Enforcement Policy, Conditional Exclusion for Electronic Wastes.

2.1 WASTE MATERIAL DESCRIPTIONS

The Recycling Depot accepts the following consumer waste materials, recyclable products, and metals for sorting, segregation, and transport to other recycling facilities:

- Aluminum cans;
- Ferrous metals, including iron and steel;
- White goods, including stoves; washers; dryers; and with visual verification that compressor containing refrigerants has been removed, refrigerators and freezers. If a compressor has not been removed, the client is directed to take the refrigerator or freezer to Seattle Public Utilities' North or South transfer stations for recycling;
- Non-ferrous metals, including copper, brass, aluminum, stainless steel, nickel, titanium, lead, and all metal alloys;
- Mixed metal scrap, including electric motors, starters, and insulated copper wire;
- Vehicle catalytic converters;
- Limited moderate risk wastes, defined per WAC 173-350-100 as waste batteries (lead acid batteries) from households. Waste oil and waste antifreeze are also limited moderate risk wastes, but these wastes are not collected by The Recycling Depot.
- Universal waste – batteries, and cell phone batteries.
- E-waste including computers, televisions, e-readers, monitors, tablets, portable DVDs, mice, keyboards, speakers, printers, scanners, cell phones, and game consoles, and peripheral components. E-waste is not dismantled at the facility. It is managed per the Ecology Interim Enforcement Policy, Conditional Exclusion for Electronic Wastes.



Annual reports that catalog the total tonnages of recyclable products processed at the Facility are provided in Appendix C.

2.2 WASTE ACCEPTANCE PROCEDURES

Only authorized waste materials, recyclable products, and metals are accepted at the Facility. No unknown waste is accepted at the Facility. Incoming materials are inspected by a Recycling Depot attendant to ensure that the Facility accepts and handles the materials presented. Any items that are not accepted (e.g., fluorescent lamps) are rejected by the Facility at the operator's discretion and taken off the Facility by the customer. For materials that are authorized by The Recycling Depot, customers are instructed to drop them off in the appropriate designated area (Figure 2).

Any containers arriving at the Facility that are corroded or in leaking containers will be rejected by the Facility. In the event that limited moderate risk waste is left at the gate while the Facility is unattended, the materials will be placed in a secure compatible holding container, labeled, and placed under cover. Hazardous and/or dangerous waste is not accepted at the Facility. In the event that hazardous and/or dangerous waste is unintentionally accepted or left at the gate while the Facility is unattended, the waste immediately will be returned to the owner or, if necessary, placed in a compatible drum or holding container and placed under cover on secondary containment. The hazardous and/or dangerous waste will be managed by a licensed outside vendor, who will sample, profile, and dispose of the waste at a licensed hazardous waste treatment, storage, and disposal facility.

The Recycling Depot maintains posted signage at the entrance to the Facility stating that no hazardous or toxic wastes are accepted. Photographs of the signage can be found in Appendix D. The Recycling Depot also provides a flyer specifying that lead acid batteries are only accepted from households or small quantity generators (Appendix D). Waste materials not accepted at the Facility include:

- Asbestos-containing materials;
- Radioactive materials;
- Oily waste, oil filters, transformers, and other vessels containing oil;
- Closed or sealed containers;
- Explosives, weapons, or ammunition;
- PCB-containing ballasts or capacitors, or unlabeled ballasts or capacitors;
- Tires or rubber-coated items;
- Paint cans or pesticide containers; and
- Refrigerators and freezers with compressors that contain Freon. (If a compressor is present, the client must have a certificate confirming proper removal of Freon gas prior to acceptance, or the client will be directed to Seattle Public Utilities North or South Transfer Stations for disposal/recycling options.)



2.3 WASTE HANDLING AND SEGREGATION

The following subsections address handling of waste materials, recyclable products, and metals delivered to the Facility and segregation of accepted materials. A description of the steel pile used for storage of ferrous metal required under WAC 173-350-320 is provided in subsection 2.3.4, Facility Steel Pile.

2.3.1 Handling

If the customer is dropping off bulk metals, the truck is weighed on the truck scale and an attendant observes material unloading at the steel pile. All non-ferrous metals are screened and weighed by an attendant at the time they are delivered and sorted under cover on the western portion of the Facility.

Other waste materials, including spent batteries, e-waste, mixed metals, and aluminum cans, are unloaded in the designated portion of the Facility as directed and observed by The Recycling Depot attendant.

2.3.2 Segregation

The Recycling Depot attendants sorts bulk metals, including scrap steel, iron aluminum, and old sheet aluminum at the bulk metals unloading area adjacent to the steel pile. Other metals accepted in smaller quantities (e.g., copper, brass, and lead) are weighed and sorted under cover on the western portion of the Facility.

2.3.3 Limited Moderate Risk Waste

Spent lead acid batteries are accepted from households, CESQGs, and SQGs and is the only type of limited moderate risk waste accepted by The Recycling Depot. Used oil and used antifreeze are not accepted from clientele. The spent lead acid batteries are hand-sorted by an operator, scaled, and then stacked or stored in a designated, covered location. Appropriate personal protective equipment is used during handling of moderate risk waste. Spent lead acid batteries are stacked on pallets three high, shrink-wrapped, properly labeled, and stored in a designated covered location prior to shipment. The spent lead acid batteries are managed to prevent spill or releases of hazardous substances to the environment and, control and prevent exposure to the public.

2.3.4 Universal Waste

Cell phone batteries are accepted. The batteries are hand-sorted by an operator, scaled, and then stored in compatible containment in a designated, covered location and appropriately labeled. The date the batteries were first put in the container is placed on the label.

2.3.5 Non-PCB Containing Ballasts and Capacitors

Ballasts and capacitors are inspected by The Recycling Depot attendant to ensure they are marked “No PCBs” before acceptance at the facility. Non-PCB containing ballasts and capacitors are stored in labeled 55-gallon drums with a secure lid in a designated covered location. Lead is stored in labeled 55-gallon drums in a designated covered location.



2.3.6 Electronic Waste

The Recycling Depot attendants collect, and hand sort e-waste. The e-waste is stored in a designated location in labelled plastic or steel bins with covers or in a covered area to minimize unintentional breakage and prior to shipment for recycling. E-waste is not dismantled on-site. E-waste may include computers, televisions, e-readers, monitors, tablets, portable DVDs, mice, keyboards, speakers, printers, scanners, cell phones, and game consoles and is managed and handled in accordance with of the Ecology Interim Enforcement Policy, Conditional Exclusion for Electronic Wastes. The letter of notification to the Department of Ecology of the e-waste handling is provided in Appendix A.

2.3.7 Facility Steel Pile

Ferrous metal that is accepted is placed on the steel pile. The steel pile is located on the central portion of the Facility. The maximum height is maintained at or below approximately 20 feet above the ground surface, and the maximum footprint allowed on the Facility is 50 feet by 35 feet (Figure 2). Allowable operating dimensions of the steel pile limit the total volume to approximately 430 cubic yards at any one time.¹ Access to the steel pile is restricted to Facility operators during business hours and access controls. The steel pile is secured by Facility fencing during nonoperating times.

2.4 MATERIAL REMOVAL

Sorted materials are regularly removed from the Facility on the following schedule:

- No. 1 steel (HMS 80/20) is shipped in overseas containers daily;
- White goods (refrigerators and freezers) that have been professionally evacuated of gases and/or oil and contaminated steel are shipped to a shredder daily;
- Old sheet aluminum bins are removed approximately once per week;
- Irony aluminum is removed twice per week;
- Overseas shipping containers containing other recycled materials are removed weekly;
- Lead items such as fishing weights, roof vents, old lead bathroom fixtures are removed regularly, as needed;
- Cell phone batteries are removed regularly and shipped for recycling;
- Stereos, computer towers, and videocassette recorders e-waste is shipped weekly to a local recycler;
- Non-PCB containing ballasts are removed when the 55-gallon storage drum is full;
- Non-PCB containing capacitors are removed when the 55-gallon storage drum is full; and

¹ Approximately 245 short tons based on a bulk density of 42 pounds per cubic foot for scrap steel.



- Spent lead acid batteries are removed on an on-call basis approximately once per week.

2.4.1 Specific E-waste Handling

E-waste will be shipped under a bill of lading (BOL) to meet applicable hazardous material Department of Transportation requirements. Broken or crushed electronics will be shipped under a BOL, packaged to prevent release to the environment, and labeled as e-waste.

E-waste will be accumulated in a manner that minimizes unintentional breakage and is protective of the environment.

E-waste will be moved off-site within 180 days for recycling from date of receipt. As a standard practice e-waste is shipped off-site on a weekly basis.

2.4.2 Specific Limited Moderate Risk Waste (spent lead acid battery) Handling

Spent lead acid batteries are collected and managed in a manner to prevent spills or release, and to protect the environment. Spent lead acid batteries are stacked three-high on pallets, secured, and labelled. Spent lead acid batteries will be moved off-site within 180 days for recycling from date of receipt. As a standard practice the spent lead acid batteries are shipped off-site on a weekly basis.

2.4.3 Universal Waste – Waste Batteries Handling

Cell phone batteries are collected and managed to protect the environment. The batteries are placed in compatible containers, secured, and labelled with the date batteries were first placed in the container. The batteries will be moved off-site within 1 year of being placed in the container. As a standard practice the batteries are shipped off-site on a weekly basis.

2.5 FACILITY CONTROLS

This section addresses requirements of WAC 173-350-040, Performance Standards; and WAC 173-350-210(6)(a)(iv), WAC 173-350-320(6)(a)(iv), and WAC 173-350-360(2). Details provided below describe how The Recycling Depot controls operations on the Facility, including control of litter, dust, and nuisance odors, and pests and other vectors.

2.5.1 Litter, Dust, and Nuisance Odors

The Facility is swept as needed to control and contain litter and dust. Dust suppression is provided as needed using 2 to 3 fans fitted with water misters. The water for the misters is provided by garden hose. The fans are mobile and can be moved around the facility to mitigate fugitive dust generation when warranted. Misting is applied during pile sorting and material movement as needed. Activities on the Facility do not generate nuisance odors.



2.5.2 Rodents, Insects, and Other Vectors

Materials accepted and handled by The Recycling Depot do not include food waste or other products that attract birds, rodents, insects, and other vectors to the Facility. Best management practices to deter vectors and rodent habitation include:

- Inspect the facility for potential nesting and food sources periodically, and if identified, remove.
- Move and manage material piles, to inhibit vector habitation.
- Trim and remove bushes, shrubs, and vines, to inhibit habitation, as necessary.
- Clean and inspect building and sheds and remove potential bedding/nesting materials.
- If needed, use snap traps to remove rodents.

2.6 SPILL KIT LOCATIONS

Spill kits are labeled and conspicuously available at multiple locations around the Facility, including adjacent to the scale, adjacent to used-oil storage, and at the covered materials storage and sorting areas. The Recycling Depot keeps stocks of wood shavings, oil absorbent pads, and absorbent socks for spill response, which are appropriate for the materials stored and recycled at the Facility. Any spill response materials are drummed or placed into a sealed bulk container for proper disposal at a licensed facility.



3.0 INSPECTIONS AND MAINTENANCE

This subsection provides details of Facility inspections and recordkeeping as specified under WAC 173-350-210(6)(a)(v), WAC 173-350-210(6)(a)(vi), WAC 173-350-320(6)(a)(v), WAC 173-350-320(6)(a)(vi), and WAC 173-350-360 (2).

3.1 INSPECTIONS

Regular facility inspections and maintenance are completed by employees of The Recycling Depot. Inspections are performed at a minimum of once per week or once each operating day, whichever is more frequent, to ensure the Facility continues to meet operational standards. Annual inspections are conducted to inspect secondary containment systems, sumps, and ventilation systems, as applicable. Equipment, including the scale, shear, and balers, are serviced professionally by an outside vendor, as needed. Used oil generated by Facility operations and moderate risk wastes are removed from the Facility and disposed of or recycled off the Facility by the third party.

Facility inspection reports include the date of inspection, the name and signature of the inspector, a notation of observations made, and the date and nature of any needed repairs or remedial actions taken. Inspection reports also include any significant deviations from this Plan of Operation. An inspection form is provided in Appendix E. Completed forms will be kept with this plan for a minimum of 5 years and are available for review as needed.

3.2 RECORDS AND REPORTING

The Recycling Depot maintains records of all materials processed on the Facility, including the types and total weights handled each year. Annual reporting and recordkeeping details are described in the following sections.

3.2.1 Annual Reporting

The Recycling Depot completes an annual report using standard reporting forms provided by the Department of Ecology that is submitted to the City of Seattle and the Seattle & King County Public Health Department each year on or before April 1 in accordance with WAC 173-350-210(6)(b), and 173-350-320(6)(a)(vi). Copies of annual reports will be filed in Appendix E. The annual report details the Facility's activities during the previous year and includes the following information:

- Name and address of the Facility;
- Calendar year covered by the report;
- Annual quantities and types of solid waste and moderate risk waste handled by the Facility, including amounts received, amounts removed, and the amount of waste remaining at the Facility at year's end, in tons or cubic yards;



- Number of households and conditionally exempt small quantity generators served annually (moderate risk waste);
- Destination of waste material transported from the Facility for processing or disposal; and
- Any additional information required by the jurisdictional health department as a condition of the permit.

A separate report is required to be submitted to the Department of Ecology regarding handling of limited moderate risk waste (spent lead acid batteries) in accordance with the Moderate Risk Waste Handling Permit Exemption. The annual report details the Facility's activities during the previous year associated with spent lead acid battery handling and includes the following information:

- Name and address of the Facility;
- Calendar year covered by the report;
- Annual quantities of spent lead acid batteries handled by the Facility, including amounts received, amounts removed, and the amount of remaining at the Facility at year's end, in tons or cubic yards; and
- Destination of waste material transported from the Facility for processing or disposal.

Copies of annual reports will be filed in Appendix E.

3.2.2 Recordkeeping

Annual reports and facility inspection records are kept for a minimum of 5 years and are available upon request. Incoming material types and quantities are recorded and tracked in an on-site computer system. The description, quantity, and price of the incoming material are entered. Sales of outgoing material is tracked separately from incoming materials in the on-site computer system. Reports of incoming and outgoing materials may be generated as requested.



4.0 SAFETY AND EMERGENCY RESPONSE

This section describes minimum safety and emergency response measures in effect at the Facility, including emergency contact information and protocols for immediately summoning fire, police, or other emergency service personnel if needed.

4.1 EMERGENCY PREPAREDNESS

Should an emergency, including hazardous material spill, fire, explosion, or other unforeseen event, occur inside or outside the Facility, the appropriate emergency services will be notified immediately. Any customers present will be evacuated from the Facility following established traffic patterns through the north exit gate. Access gates will be closed and locked to prevent other customers from entering. Staff will exit through the south gate and muster south of the Facility in the parking area on the corner of South Harney Street and Corson Avenue South to provide access for emergency personnel as requested. Only emergency personnel will be permitted on the Facility until the emergency has been addressed and the Facility is deemed safe to be re-opened to the public.

4.2 EMERGENCY CONTACT INFORMATION

Primary Facility Contacts:

General Manager, Dave McElroy:	(206) 979-3959
Office Manager, Catherine Adams:	(206) 325-7288

Agency Contacts:

Fire, Rescue, Ambulance, and Police	911
Seattle Fire Station 27 (non-emergency)	(206) 386-1400
Seattle Police Department South Precinct (non-emergency)	(206) 386-1850
Washington Poison Center	(800) 222-1222
Public Health – Seattle & King County	(206) 296-4600
National Response Center	(800) 424-8802
Washington Emergency Management Division	(800) 258-5990
Department of Ecology Northwest Regional Office	(425) 649-7000



4.3 EMERGENCY CONTACT PROCEDURES

In the event of an emergency, the following shall be notified:

Fire, Rescue, Ambulance, and Police (if applicable)	911
The Recycling Depot Yard Manager	As posted in the Office

4.4 EMERGENCY SPILL RESPONSE PLAN – IMMEDIATE ACTIONS

In the event of a spill, Facility personnel should take immediate action to stop the source of the spill and to contain the spilled substance. Site contacts should be notified to ensure an expedited cleanup. In the event of a spill, the following steps should be taken:

- **Extinguish Any Sources of Ignition.** Until the material is identified as nonflammable and noncombustible, all potential sources of ignition in the area should be removed or disabled. Vehicles should be turned off. If the ignition source is stationary, attempt to move spilled material away from ignition source. Avoid sparks and movement creating static electricity.
- **Confirm if Danger to Human Health Exists.** If there is an immediate threat to human life (e.g., a fire in progress or fumes overcoming workers), an immediate alarm should be sounded to evacuate the area, and the fire department should be called. If there is no health or safety hazard, begin to address the spill.
- **Attempt to Stop the Release at its Source.** The discoverer may attempt simple procedures (e.g., turning valves, plugging leaks) to stop the release at the source.
- **Contain Released Material.** Cover drains to block access to adjacent catch basins. Following proper safety procedures, the spill should then be contained using absorbent materials and dikes. All containment equipment should be moved into place using shovels and brooms whenever practical. Spill kits are located throughout the Facility.
- **Initiate Notification and Reports to Outside Agencies.** The main or back-up site contact will determine whether a reportable spill has occurred. Verbal notifications to government agencies will be made by the main or back-up site contact, if necessary. Where verbal notification is given, a confirming written report will be sent to the same entity, if required.
- **Initiate Spill Notification and Reporting Procedures.** Request the assistance of outside personnel (i.e., Seattle Fire Department) if an uncontrollable spill has occurred and/or if the spill has migrated beyond the site boundaries or enters a storm drain.



4.5 SPILL CLEANUP AND DISPOSAL PROCEDURES

Appropriate personal protective equipment and cleanup procedures can be found on Material Safety Data Sheets (MSDSs). Care must be taken when cleaning up spills to minimize the generation of waste. Spill cleanup and disposal procedures are detailed below:

- **Recover or Clean Up the Material Spilled.** Appropriate Facility personnel and/or an approved vendor with a current contract in place will assist with spill cleanup efforts and waste disposal. The main or backup site contact has responsibility for overseeing the spill cleanup and waste disposal process. Liquids absorbed by solid materials will be shoveled into open-top, 55-gallon drums. When drums are filled after a cleanup, the drum lids will be secured, and the drums will be labeled appropriately to identify the substance, the date of the spill/cleanup, and the facility name and location. Combining incompatible materials can cause potentially dangerous chemical and/or physical reactions or may severely limit disposal options. Compatibility information can be found on MSDSs. Waste materials will be disposed of at a permitted facility.
- **Clean Up the Spill Area.** Surfaces that are contaminated by the release will be cleaned using an appropriate substance. Cleanup agents must be minimized, contained, and disposed of properly. Occasionally, porous materials (such as wood, soil, or oil-dry) may be contaminated. These materials may require special handling for disposal.
- **Clean Tools and Equipment Used in Cleanup.** Even if dedicated to cleanup efforts, tools and equipment that have been used must be replaced or cleaned before restoring them to the spill kit.

4.6 FIRE AND SAFETY EQUIPMENT

Portable fire extinguishers are located throughout the Facility, are well marked, and are easily accessible. Records are kept on fire equipment in service. Regular inspections are performed in accordance with established procedures.

4.7 SPILL REPORTING REQUIREMENTS

4.7.1 Agency Reporting

Spill reporting requirements vary by regulatory agency, as detailed below. Spill reports to be submitted to regulatory agencies will be prepared by the site contact. Copies of regulatory correspondence should be retained for at least 3 years.

4.7.1.1 Washington State Spill Reporting Requirements

Any quantity of oil or hazardous materials entering the waters of the state is considered a reportable spill. State waters include Washington's marine waters, estuaries, rivers, lakes, streams, creeks, ponds, springs, wetlands, underground (ground) water sources, sewers, storm drains, beaches, ditches, and even snowbanks.



Spills or discharges of moderate risk waste (oil, antifreeze, sulfuric acid from lead acid batteries) to the environment. Notify the King County Health Department and Department of Ecology.

Washington State Department of Ecology Northwest Office: (425) 649-7000

Seattle Public Utilities Operation Response Center: (206) 386-1800

King County Health Department: (206) 487-0530

In the event that any quantity of oil enters the waters of the state, also call the following:

1. Washington Emergency Management Division: 1-800-258-5990

OR 1-800-OILS-911

2. National Response Center: 1-800-424-8802

As per Part 110.3 of Title 40 of the Code of Federal Regulations, a discharge of oil includes: 1) a discharge that violates applicable water quality standards, or 2) a discharge of oil that causes a film or sheen upon or discoloration of the surface of the water or adjoining shorelines or causes a sludge or emulsion to be deposited beneath the surface of the water or upon adjoining shorelines.

Typical information that will be requested includes:

- Where is the spill?
- What spilled?
- How much spilled?
- How concentrated is the spilled material?
- Who spilled the material?
- Is anyone cleaning up the spill?
- Are there resource damages?
- Who is reporting the spill?
- How can we get back to you?



5.0 CLOSURE PLAN

The following section identifies The Recycling Depot closure plan for the Facility, including notification requirements and waste removal methods in accordance with the requirements of WAC 173-350-210(8), and WAC 173-350-320(8).

5.1 NOTIFICATION

Prior to closure of operations on the Facility, The Recycling Depot will notify the King County and City of Seattle public health departments in writing 60 days prior to final closure.

5.2 WASTE REMOVAL

All wastes currently accepted, sorted, and handled on the Facility will be removed to a facility that conforms with the applicable regulations for each waste type. Waste will be removed using the same methods and equipment that are applied to regular operations, including commercial trucks and Connex shipping containers. All wastes that cannot be sold and must be disposed of will be removed from the Facility and disposed of in accordance with state and federal regulations.

5.3 FINANCIAL ASSURANCE

There are no specific financial assurance requirements for piles used for storage or treatment and The Recycling Depot is exempt from moderate risk waste closure requirements.



6.0 REFERENCES

City of Seattle Department of Construction Inspection. 2020. Land Use Map Online Resource <<http://seattlecitygis.maps.arcgis.com/apps/webappviewer/index.html?id=f822b2c6498c4163b0cf908e2241e9c2>>. (October 1, 2020.)

King County Assessor. 2020. Parcel Viewer Online Resource <<https://gismaps.kingcounty.gov/parcelviewer2/>>. (October 1, 2020.)

FIGURES

**PLAN OF OPERATIONS
The Recycling Depot
6004 Corson Avenue South
Seattle, Washington**

Farallon PN: 2325-001



REFERENCE: 7.5 MINUTE USGS QUADRANGLE SEATTLE SOUTH, WASHINGTON, DATED 2013



Quality Service for Environmental Solutions | farallonconsulting.com

Washington
Issaquah | Bellingham | Seattle

Oregon
Portland | Baker City

California
Oakland | Folsom | Irvine

FIGURE 1

PROPERTY VICINITY MAP
THE RECYCLING DEPOT
6004 CORSON AVENUE SOUTH
SEATTLE, WASHINGTON

FARALLON PN: 2325-001

Drawn By: sgaynier

Checked By: SS

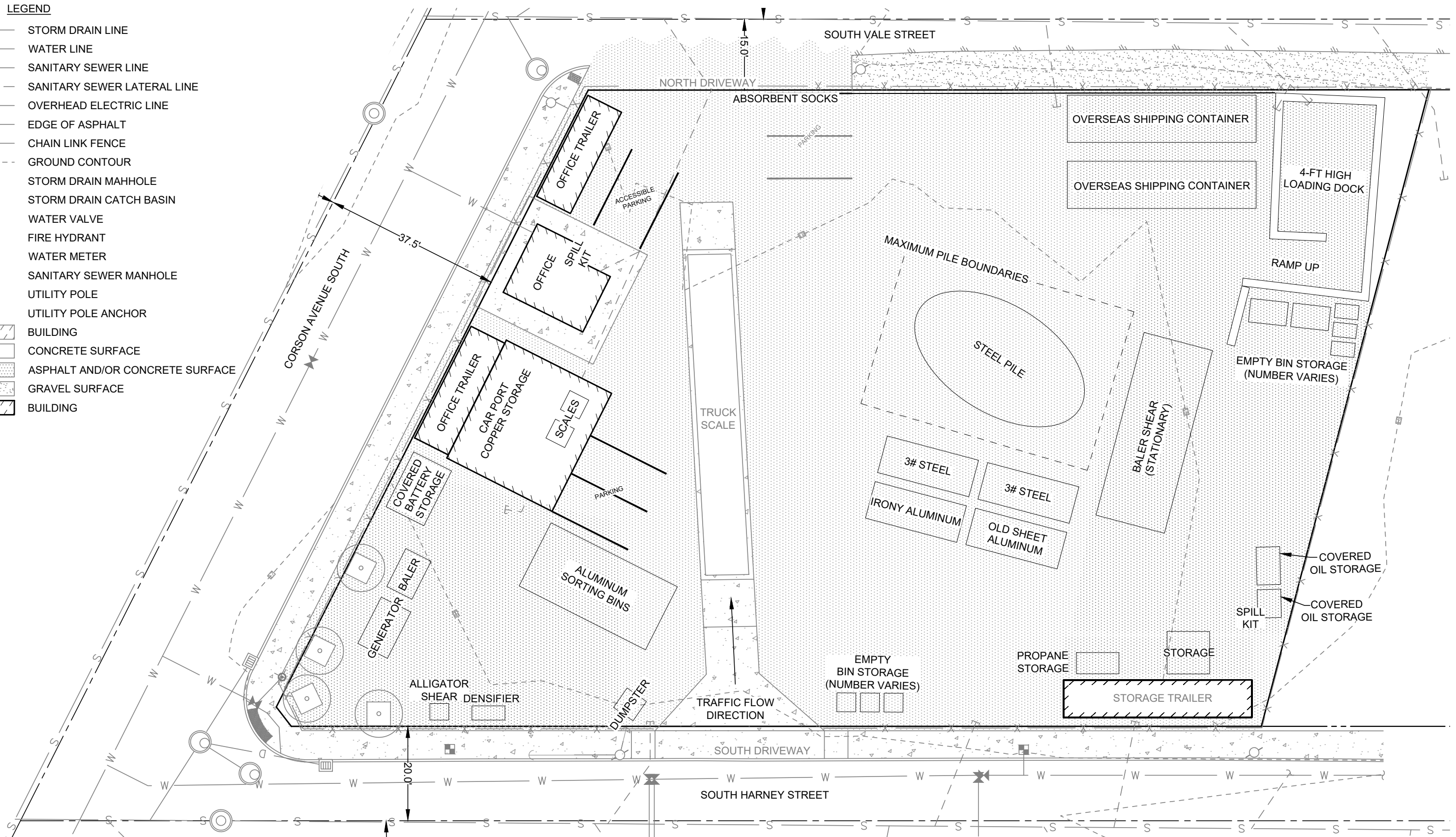
Date: 4/9/2020

Disc Reference:

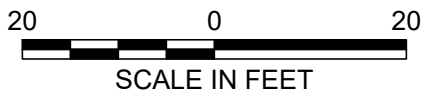
Path: Q:\Projects\The Recycling Depot\001 Corson Ave\Mapfiles\Figure-01_SiteVicinity.mxd

LEGEND

- D — STORM DRAIN LINE
- W — WATER LINE
- S — SANITARY SEWER LINE
- - - SANITARY SEWER LATERAL LINE
- - - OHE — OVERHEAD ELECTRIC LINE
- / — EDGE OF ASPHALT
- X - CHAIN LINK FENCE
- - - 18' - - - GROUND CONTOUR
- — STORM DRAIN MAHOLE
- — STORM DRAIN CATCH BASIN
- ⊕ — WATER VALVE
- ⊕ — FIRE HYDRANT
- ⊕ — WATER METER
- ⊕ — SANITARY SEWER MANHOLE
- ⊕ — UTILITY POLE
- ⊕ — UTILITY POLE ANCHOR
- ▨ — BUILDING
- ▨ — CONCRETE SURFACE
- ▨ — ASPHALT AND/OR CONCRETE SURFACE
- ▨ — GRAVEL SURFACE
- ▨ — BUILDING



R:\Projects\2325-001\CAD\Engineering\Drawings\2325-001-Figure-02-for-KC-CoS-Health.dwg 3/1/2022 11:17 AM (Chris Kovacs)



Washington
Issaquah | Bellingham | Seattle

Oregon
Portland | Baker City

California
Oakland | Irvine

FARALLON
CONSULTING

Your Challenges. Our Priority. | farallonconsulting.com

Drawn By: NM Checked By: SS

FIGURE 2
SITE PLAN
THE RECYCLING DEPOT
6004 CORSON AVENUE SOUTH
SEATTLE, WASHINGTON

FARALLON PN: 2325-001

APPENDIX A
FACILITY PERMITS AND NOTIFICATIONS

PLAN OF OPERATIONS
The Recycling Depot
6004 Corson Avenue South
Seattle, Washington

Farallon PN: 2325-001



June 17, 2021

Rob Rieck
Hazardous Waste and Toxics Reduction Program
P2RA Section,
Department of Ecology
PO Box 47600
Olympia, Washington 98502

RE: Notification of Limited Moderate Risk Waste Handling

The Recycling Depot is submitting this letter to the Hazardous Waste and Toxics Reduction Program to notify that The Recycling Depot facility located at 6004 Corson Avenue South, Seattle, Washington is accepting and recycling lead acid batteries. The Recycling Depot collects lead acid batteries from households and small quantity generators and sends the lead acid batteries to local facilities for recycling and does not export these materials outside of the country.

The Recycling Depot will manage the lead acid batteries in accordance with Washington Administrative Code 173-350-360 (2) Moderate Risk Waste handling – Permit exemption outlined in Table 360-A.

The Recycling Depot only accepts and recycles lead acid batteries from households and small quantity generators. Please contact the undersigned at 206-602-3550 if you have any questions.

Regards,

Dave McElroy
General Manager
206-979-3959 (Cell)

6004 Corson Ave South • Seattle, WA 98108 • 206.767.7211

RECYCLINGDEPOTSEATTLE.COM



T R A N S M I T T A L

To: Dawn Marie Mauer **Date:** September 17, 2021
Washington State Department of Ecology - NWRO **Farallon PN:** 2325-001
PO Box 330316 **Project Title:** Corson Avenue Site
Shoreline, Washington 98133-9716 The Recycling Depot Facility
cc: Rory O'Rourke, Seattle King County Public Health

We are enclosing:

<u>Copies</u>	<u>Description</u>
<u>1</u>	<u>Notice of Intent to Operate Under Terms and Conditions for Solid Waste Permit Exemption</u>
<u>1</u>	<u>Addendum to Notice of Intent – Part 3, Facility Details</u>

Remarks: Please note that this submittal is in coordination with a solid waste permit submittal currently under review by Seattle & King County Public Health, Environmental Health Services Division. A copy of the enclosed is being provided to Rory O'Rourke with Seattle & King County Public Health Solid Waste Program.

From: Suzy Stumpf, P.E.

If enclosures are not as noted, please notify us at (425) 295-0800.



**Notice of Intent to Operate Under Terms and Conditions
for Solid Waste Permit Exemption**
Chapter 173-350 WAC, Solid Waste Handling Standards

Identification
Number
(For official
use only)

PART 1. General Information

Name of Facility: The Recycling Depot		Date: June 17, 2021
<input checked="" type="checkbox"/> Currently operating. <small>4/1/2011</small> Date operations started: _____ <small>The Recycling</small> <input type="checkbox"/> Plan to start operations on _____		Contact information is for (check one): <input type="checkbox"/> Facility owner <input checked="" type="checkbox"/> Facility operator <input type="checkbox"/> Facility owner/operator
Company Name or Government Entity: The Recycling Depot Contact Name and Position in Company or Government Entity: Dave McElroy Contact Mailing Address: dave@islandrecycling.com Contact phone: 206-940-0757 E-mail: dave@islandrecycling.com		Facility address (if different than mailing address): County where facility is located: King Facility phone: 206-325-7288 Facility website: NA
Describe how close the operation will be to surface water and approximate depth to groundwater (if known): The facility is approximately 1 mile east of the Duwamish River. Stormwater from the facility is conveyed to the Seattle Public Utilities combined sewer system. Depth to groundwater is unknown.		

PART 2. Type of Exemption

In accordance with [chapter 70.95 RCW](#), *Solid Waste Management – Reduction and Recycling*, the activities listed herein are exempt from solid waste handling permitting. An owner or operator that does not comply with the terms and conditions for exemption must obtain a permit from the jurisdictional health department and comply with applicable requirements for the solid waste handling activity. In addition, [RCW 70.95.315](#) authorizes penalties for failure to meet the terms and conditions of exemption.

Continued on next page...

Mark all solid waste handling activities/facilities that are included in this notification of exemption. If the activity/facility does not fit the description below in its entirety, do not fill out this form. Please contact the Washington Department of Ecology to determine what, if any, solid waste regulations apply (phone numbers are at the end of this form).

Recycling or material recovery of commingled or segregated brick, cured concrete, or asphaltic materials. WAC 173-350-210 Table 210-A(2). Facilities with outdoor piles over 250 cubic yards must also have either a water quality sand and gravel or construction stormwater general permit to comply with the Piles standards under WAC 173-350-320 Table 320-A(4).

Recycling or material recovery of source-separated recyclable materials. WAC 173-350-210 Table 210-A(3)

Piles of wood waste, wood-derived fuel, and nonferrous metals where the facility will have over 250 cubic yards but no more than 2,000 cubic yards total material on-site. [WAC 173-350-320 Table 320-A\(3\)](#)

Moderate risk waste (MRW) handling using a mobile system(s), collection event(s), or limited MRW facility. WAC 173-350-360(2) Table 360(A)

Composting of feedstocks that may include all organic feedstocks. Composting facility will have greater than 25 but no more than 250 cubic yards of all materials on-site at any one time, not to exceed 1,000 cubic yards feedstocks processed in a calendar year. [WAC 173-350-220 Table 220-A\(2\)](#)

Composting of yard debris, crop residue, manure and bedding and/or bulking agents. Composting facility will have greater than 25 but no more than 500 cubic yards of all materials on-site at any one time, not to exceed 2,500 cubic yards feedstocks processed in a calendar year. [WAC 173-350-220 Table 220-A\(3\)](#)

On-farm composting of agricultural wastes, yard debris and/or bulking agents. Composting facility will have greater than 25 but no more than 1,000 cubic yards of agricultural wastes and bulking agents on-farm at any one time, and up to 50% of organic materials on-farm may be yard debris. Composting facility will manage more than 25 cubic yards of imported yard debris on-site at any one time or if managing only agricultural waste will distribute materials off-farm. [WAC 173-350-220 Table 220-A\(4\)](#)

On-farm, or on-site for zoos, composting of agricultural wastes, manure and bedding from zoos and/or bulking agents. Composting facility will have greater than 25 cubic yards of all materials on-farm, or on-site for zoos, at any one time. Composting facility will distribute composted materials off-farm, or off-site for zoos. [WAC 173-350-220 Table 220-A\(5\)](#)

Vermicomposting that may include all organic feedstocks. Vermicomposting facility will have greater than 25 but no more than 250 cubic yards of material generated on- or off-site, or up to 1,000 cubic yards of material generated on-site at any one time. [WAC 173-350-225 Table 225-A\(2\)](#)

Vermicomposting of preconsumer vegetative food waste, yard debris, crop residue, manure and bedding and/or bulking agents. Vermicomposting facility will have greater than 25 but no more than 1,000 cubic yards of all materials on-site at any one time. [WAC 173-350-225 Table 225-A\(3\)](#)

Other conversion technologies that may include all organic feedstocks. Facility will have greater than 5,000 but no more than 50,000 gallons of liquid or semi-solid material on-site at any one time or greater than 25 but no more than 250 cubic yards of nonliquid material on-site at any one time. [WAC 173-350-225 Table 225-A\(4\)](#)

Anaerobic digesters that may include all organic feedstocks. Facility will have greater than 5,000 but no more than 50,000 gallons of liquid or semi-solid material on-site at any one time or greater than 25 but no more than 250 cubic yards of nonliquid material on-site at any one time. The facility will receive organic materials from off-site or distribute them off-site. [WAC 173-350-250 Table 250-A\(2\)](#)

Anaerobic digesters that include livestock manure from on- or off-site and organic feedstocks that are not from municipal, commercial or residential solid waste collection programs. Imported organic feedstocks will be preconsumer and if likely to contain animal by-products, will be source separated at a facility licensed to process food by applicable regulatory agencies. Imported organic feedstocks that contain bovine processing waste will be derived from animals approved by the USDA and not contain any specified risk material. Imported organic feedstocks will not contain sheep carcasses or sheep processing waste. At least 50% of feedstock volume will be livestock manure and imported, nonmanure feedstocks will be no more than 30% of total feedstock volume processed. [WAC 173-350-250 Table 250-A\(3\)](#)

PART 3. Facility Details

Provide the information below for each activity/facility included in this notification of exemption. You may attach a separate document or, if using this form in Word version, provide the information following each numbered item.

Recycling and material recovery facilities per WAC 173-350-210(2) Table 210-A(2) or (3)

Provide the information below. The Washington Department of Ecology will use the information to decide if the facility will meet terms and conditions for permit exemption.

Please answer thoroughly.

1. List specific types of solid waste accepted at the facility.
2. Except for facilities handling only commingled brick, cured concrete, or asphaltic materials, describe how operators will ensure they accept only source separated recyclable materials.
3. Except for facilities handling only commingled brick, cured concrete, or asphaltic materials, describe how operators will ensure they accept no more than five percent (in weight or volume) of incidental or accidental residual per year or per load, whichever is more stringent.
4. Except for facilities handling only commingled brick, cured concrete, or asphaltic materials, describe how operators will prevent the attraction of vectors.
5. Describe how operators will store, sort, consolidate, recycle (if applicable) and market each material.
6. If stored outside, indicate how long materials will be stored. NOTE: Piles stored outside may be subject to solid waste permitting under the WAC 173-350-320, Piles used for storage or treatment.
7. Describe how operators will recycle or ship for recycling at least fifty percent of all incoming material annually.
8. Describe how operators will record amount and type of materials received, recovered or recycled and disposed (in tons). The facility will need to report these figures annually on a form the Department of Ecology will send to you.
9. For facilities handling commingled or segregated brick, cured concrete, or asphaltic materials in outdoor piles over 250 cubic yards on-site at any one time, specify either the water quality sand and gravel or construction stormwater general permit number and expiration date, or attach the permit.
10. Verify that you have read and understand the terms and conditions for a solid waste permit exemption in either [WAC 173-350-210](#)(2) Table 210-A(2) or (3).

Piles used for storage or treatment per WAC 173-350-320(2) Table 320-A(3)

Provide the information below. The Washington Department of Ecology will use the information to decide if the facility will meet terms and conditions for permit exemption.

Please answer thoroughly.

1. List specific types of solid waste accepted at the facility.
2. Specify the maximum amount of waste that will be on-site at any one time.
3. Describe how operators will record annual quantities and types of material handled by the facility, including amounts received, amounts removed and where it went, and the amount of waste remaining at the facility at year's end, in cubic yards. The facility will need to report these figures annually on a form that the Department of Ecology will send to you.
4. Describe how operators will ensure the removal of at least fifty percent of all materials handled within the calendar year. For example: A facility begins the calendar year with 300 CY of wood waste on hand. The facility accepts 400 CY during the calendar year. In order to meet this condition, at least 50% of 700 CY (300 + 400) or 350 CY, must be removed from the facility by the end of the calendar year, leaving no more than 350 CY on hand.
5. Describe how operators will prevent fugitive dust and the attraction of vectors.
6. Verify that you have read and understand the terms and conditions for a solid waste permit exemption in WAC 173-350-320(2).

Moderate risk waste (MRW) handling per WAC 173-350-360(2) Table 360-A

Provide the information below. The Washington Department of Ecology will use the information to decide if the activity will meet terms and conditions for permit exemption. Please answer thoroughly.

1. Is the activity an MRW mobile system, MRW collection event, limited MRW facility
2. For collection event(s), list anticipated date(s).
3. For mobile system or collection event(s) list anticipated location(s).
4. List specific types of MRW accepted.
5. List source of MRW accepted (household, conditionally exempt small quantity generators, other).
6. Describe how operators will ensure that MRW is handled in a manner that prevents spills or release of a hazardous substance to the environment.
7. Describe how operators will ensure that MRW is handled in a manner that prevents exposure to the public of a hazardous substance.
8. Describe how operators will ensure that incompatible waste are not allowed to come into contact with each other.
9. While not actively being used, describe how operators will ensure containers of MRW are closed in a manner to prevent spillage if overturned.
10. Describe how operators will mark containers to identify the type of MRW within.
11. Describe what training is provided to operators about the chemical nature of materials handled and mitigating action in case of a release.
12. Describe what measures will be in place to control public access.
13. Describe the type of secondary containment operators will use for containers and tanks capable of storing fifty-five gallons or more of liquid MRW.
14. Describe how operators will record amount and type of MRW received, number of households or conditionally exempt small quantity generators served (except limited MRW facilities), and type of final disposition. The facility will need to report these figures annually on a form the Department of Ecology will send to you.
15. Verify that you have read and understand the terms and conditions for a solid waste permit exemption in [WAC 173-350-360\(2\)](#).

Composting per WAC 173-350-220(2) Table 220-A(2), (3), (4) or (5)

Provide the information below. The Washington Department of Ecology will use the information to decide if your facility will meet terms and conditions for permit exemption. Please answer thoroughly.

1. Briefly describe how operators will store and process materials, including structures used (storage pad, leachate collection, etc.).
2. List specific types of feedstocks to be composted.
3. List the source(s) of each type of feedstock.
4. Specify the maximum volume (cubic yards) of materials that may be on-site at any one time, which includes feedstocks, active composting, curing piles and composted materials.
5. For facilities other than those under WAC 173-350-220 Table 220-A(4), specify the maximum volume (cubic yards) of feedstocks to be composted in a calendar year.
6. For dairies, describe how composting is part of the dairy nutrient management plan required by chapter 90.64 RCW.
7. For farms other than dairies, describe how composting is part of a farm management plan written in conjunction with a conservation district, a qualified engineer, or other agricultural professional able to certify that the plan meets applicable conservation practice standards in the USDA *Washington Field Office Technical Guide*, code 37, produced by the Natural Resource Conservation Service.
8. Specify where composted materials will be used (used on-site or on-farm, distributed off-site or to other farms, etc).
9. For facilities that distribute composted materials off-site or off-farm, list specific parameters operators will test to analyze composted materials to demonstrate it meets compost quality standards of WAC 173-350-220(6) Table 220-B before distribution. Specify how often operators will test materials and describe how operators will obtain representative samples for analysis.
10. For facilities that distribute composted materials off-site or off-farm, describe how operators will manage the operation to reduce pathogens to meet limits set by WAC 173-350-220(6) Table 220-B.
11. Describe how operators will manage materials to prevent nuisance odors and the attraction of vectors.
12. Describe how operators will record amount and type of feedstock received, amount of compost produced and amount used or distributed. Attach form or computer printout if available. The facility will need to report these figures annually on a form the Department of Ecology will send to you.

Verify that you have read and understand the terms and conditions for a solid waste permit exemption in WAC 173-350-220(2) Table 220-A(2), (3), (4), or (5).

Vermicomposting per WAC 173-350-225 Table 225-A(2) or (3)

Provide the information below. The Washington Department of Ecology will use the information to decide if your facility will meet terms and conditions for permit exemption. Please answer thoroughly.

1. Briefly describe how operators will store and process materials, including structures used (storage pad, containers, etc.).
2. List specific types of solid waste accepted at the facility.
3. List the source(s) of each type of solid waste accepted.
4. Specify the maximum volume (cubic yards) of materials that may be on-site at any one time, which includes feedstocks, active vermicomposting materials and final vermicomposting material.
5. Specify where materials will be used (used on-site or distributed off-site).
6. Describe how operators will manage materials to prevent nuisance odors, the attraction of vectors and migration of agricultural pests.
7. For facilities that distribute material off-site, describe how operators will record amount and type of solid waste received, material produced, and material used or distributed. Attach form or computer printout if available. The facility will need to report these figures annually on a form the Department of Ecology will send to you.

Verify that you have read and understand the terms and conditions for a solid waste permit exemption in [WAC 173-350-225](#)(2) Table 225(2) or (3).

Other conversion technologies per WAC 173-350-225 Table 225-A(4)

Provide the information below. The Washington Department of Ecology will use the information to decide if your facility will meet terms and conditions for permit exemption. Please answer thoroughly.

1. Briefly describe how operators will store and process materials, including structures used (storage pad, tanks, etc.).
2. List specific types of liquid, semi-solid or nonliquid material accepted at the facility.
3. List the source(s) of each type of material accepted.
4. Specify the maximum amount (gallons or cubic yards) of materials that may be on-site at any one time, which includes feedstocks, actively processing materials and final materials.
5. Specify where materials will be used (used on-site or distributed off-site).
6. For facilities that distribute materials off-site:
 - List specific parameters operators will test to analyze final material to demonstrate it meets compost quality standards of WAC 173-350-220(6) Table 220-B before distribution, and specify how often operators will test materials; or
 - Demonstrate how materials meet the conditions for a commercial fertilizer as applicable in chapter 15.54 RCW; or
 - Provide names of compliant permitted or conditionally exempt compost facilities where operators will send materials for further treatment to meet compost quality standards; or
 - Demonstrate how operators will land apply material in accordance with WAC 173-350-230, land application; or
 - Show that the material will be used in accordance with WAC 173-350-200, beneficial use permit exemptions; or
 - Explain processing or management of material in an alternate matter approved by the Department of Ecology or the jurisdictional health department.
7. Describe how operators will manage materials to prevent nuisance odors, the attraction of vectors and migration of agricultural pests.
8. Describe how operators will record will record amount and type of feedstock received, material produced, and material used or distributed. Attach form or computer printout if available. The facility will need to report these figures annually on a form the Department of Ecology will send to you.
9. Verify that you have read and understand the terms and conditions for a solid waste permit exemption in [WAC 173-350-225\(2\)](#) Table 225(4).

Anaerobic digesters per WAC 173-350-250(2) Table 250-A(2) or (3)

Provide the information below. The Washington Department of Ecology will use the information to decide if your facility will meet terms and conditions for permit exemption. Please answer thoroughly.

1. Briefly describe how operators will store and process materials, including structures used (storage pad, tank, lined or unlined surface impoundment, etc.).
2. List specific types of liquid, semi-solid or nonliquid material accepted at the facility.
3. List the source(s) of each type of material accepted.
4. Specify the maximum amount (gallons or cubic yards) of materials that may be on-site at any one time, which includes feedstocks, digesting materials and final materials.
5. Specify where materials will be used (used on-site or distributed off-site).
6. For manure digester in compliance with Table 250-A(3)
 - Describe how organic materials will be received and stored in a structure(s) that:
 - Complies with the Natural Resource Conservation Service's Practice Standard Code 313 in effect as of July 26, 2009, or other approved storage construction standard approved by the Department of Ecology or jurisdictional health department; and
 - Is certified by a representative of the Natural Resources Conservation Service to be effective at protecting surface or groundwater; or
 - Meets applicable construction industry standards adopted by the American Concrete Institute or the American Institute of Steel Construction in effect as of July 26, 2009.
 - Describe how the anaerobic digester will be designed and operated in accordance with standards in the Natural Resources Conservation Service's Conservation Practice Standard, Code 366, in effect as of July 26, 2009.
 - If accepting imported organic feedstocks likely to contain animal by-products, explain how operators will ensure it is source separated at a facility licensed to process food by the U.S. Department of Agriculture, the U.S. Food and Drug Administration, the Washington State Department of Agriculture, or other applicable regulatory agency. For example, operators will obtain a copy of the USDA, FDA or WSDA license for that feedstock and retain for your records and agency review.
 - If accepting imported organic feedstocks containing bovine processing waste, explain how operators will ensure the waste is derived from animals approved by the U.S. Department of Agriculture Food Safety and Inspection Service and not contain specified risk material. For example, employees will obtain a copy of the USDA approval for that feedstock and retain for your records and agency review.
 - Explain how operators will prevent the acceptance of sheep carcasses or sheep processing waste.
 - Describe how operators will manage materials to prevent nuisance odors, the attraction of vectors and migration of agricultural pests.
 - Specify the length of time between receipt of imported organic feedstocks and when operators will feed those materials into the digester.

Continued on next page...

7. For facilities that distribute digestate off-site:

- List specific parameters operators will test to analyze digestate solids to demonstrate it meets compost quality standards of WAC 173-350-220(6) Table 220-B before distribution, and specify how often operators will test materials; or
- Demonstrate how digestate liquids or nonseparated digestate will meet the conditions for a commercial fertilizer as applicable in chapter 15.54 RCW; or
- Provide names of compliant permitted or conditionally exempt compost facilities where operators will send digestate for further treatment to meet compost quality standards; or
- Demonstrate how operators will land apply material in accordance with WAC 173-350-230, land application; or
- Show that the material will be used in accordance with WAC 173-350-200, beneficial use permit exemptions; or
- Explain processing or management of material in an alternate matter approved by the Department of Ecology or the jurisdictional health department.

8. Describe how operators will manage materials to prevent the attraction of vectors and migration of agricultural pests.

9. Describe how operators will record amount and type of feedstock received, digestate produced, digestate used or distributed and, if applicable, results of digestate analysis. Attach form or computer printout if available. The facility will need to report these figures annually on a form the Department of Ecology will send to you.

10. Verify that you have read and understand the terms and conditions for a solid waste permit exemption in WAC 173-350-250(2) and Table 250-A(2) or (3).

Preparer's Name (printed): <i>DAVE M. ELOY</i>		Title/Company: <i>General Manager</i>	
Preparer's Signature: <i>[Signature]</i>		Phone: <i>206-979-3959</i>	E-mail: <i>dave@islandrecycling.com</i>
		Date: <i>9.13.2021</i>	

Submit this notice and any attachments to both:

The Ecology regional office for the county in which the facility is located, provided below, and the jurisdictional health agency for the area in which the facility is located.

Southwest Regional Office, 360-407-6300

Solid Waste Management Program
P.O. Box 47775, Olympia, WA 98504-7775

Northwest Regional Office, 425-649-7000

Solid Waste Management Program
3190 - 160th Ave. SE, Bellevue, WA 98008-5452

Central Regional Office, 509-575-2490

Solid Waste Management Program
1250 W Alder Street, Union Gap, WA 98903-000

Eastern Regional Office, 509-329-3400

Solid Waste Management Program
4601 N Monroe, Spokane, WA 99205-1295



The Department of Ecology is committed to providing people with disabilities access to information and services by meeting or exceeding the requirements of the Americans with Disabilities Act (ADA), Section 504 and 508 of the Rehabilitation Act, and Washington State Policy #188.

To request an ADA accommodation, contact Ecology by phone at 360-407-6900 or email at first.last@ecy.wa.gov. For Washington Relay Service or TTY call 711 or 877-833-6341. Visit [Ecology's website](https://ecology.wa.gov)¹ for more information.

¹ <https://ecology.wa.gov/About-us/Accountability-transparency/Accessibility>
ECY 070-493 (Revised 02/20)

Ecology Notice of Intent to Operate Under Terms and Conditions for Solid Waste Permit Exemption

Part 3. Facility Details

Moderate Risk Waste (MRW) Handling per WAC 173-350-360(2) Table 360-A

1. The facility operates as a limited MRW facility.
2. The facility does not hold MRW collection events.
3. The facility does not participate in mobile MRW collection events.
4. The only moderate risk waste accepted at The Recycling Depot is lead acid batteries from households and small quantity generators. In addition, The Recycling Depot manages and recycles e-waste in accordance with the Ecology Interim Enforcement Policy, Conditional Exclusion for Electronic Wastes.
5. Source of MRW accepted is households and conditionally exempt small quantity generators.
6. All employees are trained individually prior to starting on to how to identify the different types of metal, recyclable materials, and where they go. Materials are sorted and as appropriate placed in separate bins for sorting and storage.
7. The public does not have access to the facility's sorting and storage areas. Public access is restricted to the drop off location.
8. Employees unload and sort metal by type and then place like materials in bins. Incompatible waste is sorted and separated at time of delivery.
9. All material storage bins have individual covers and stored under a covered area.
10. Individual bins are labeled by material.
11. All employees are trained individually prior to starting on to how to identify the different types of metal, recyclable materials, and where they go. All employees are trained on how to respond to an accidental spill and where spill kits are located.
12. The entire facility is secured by fence with locking access gates. Customers are allowed to access the facility through controlled access gates. When the facility is not open the access gates are closed and secure.
13. Based on the limited MRW accepted at the facility, the facility does not store liquids of 55-gallons or more of MRW.
14. Incoming MRW is recorded in the facility's BUY BACK PRO system. The sale of MRW to an authorized vendor is recorded in the facility's account software. These items will be detailed in the annual report provided to the Department of Ecology.

15. The facility owner and operators have read and are familiar with the terms and conditions for a solid waste permits exemption in WAC 173-350-360(2).

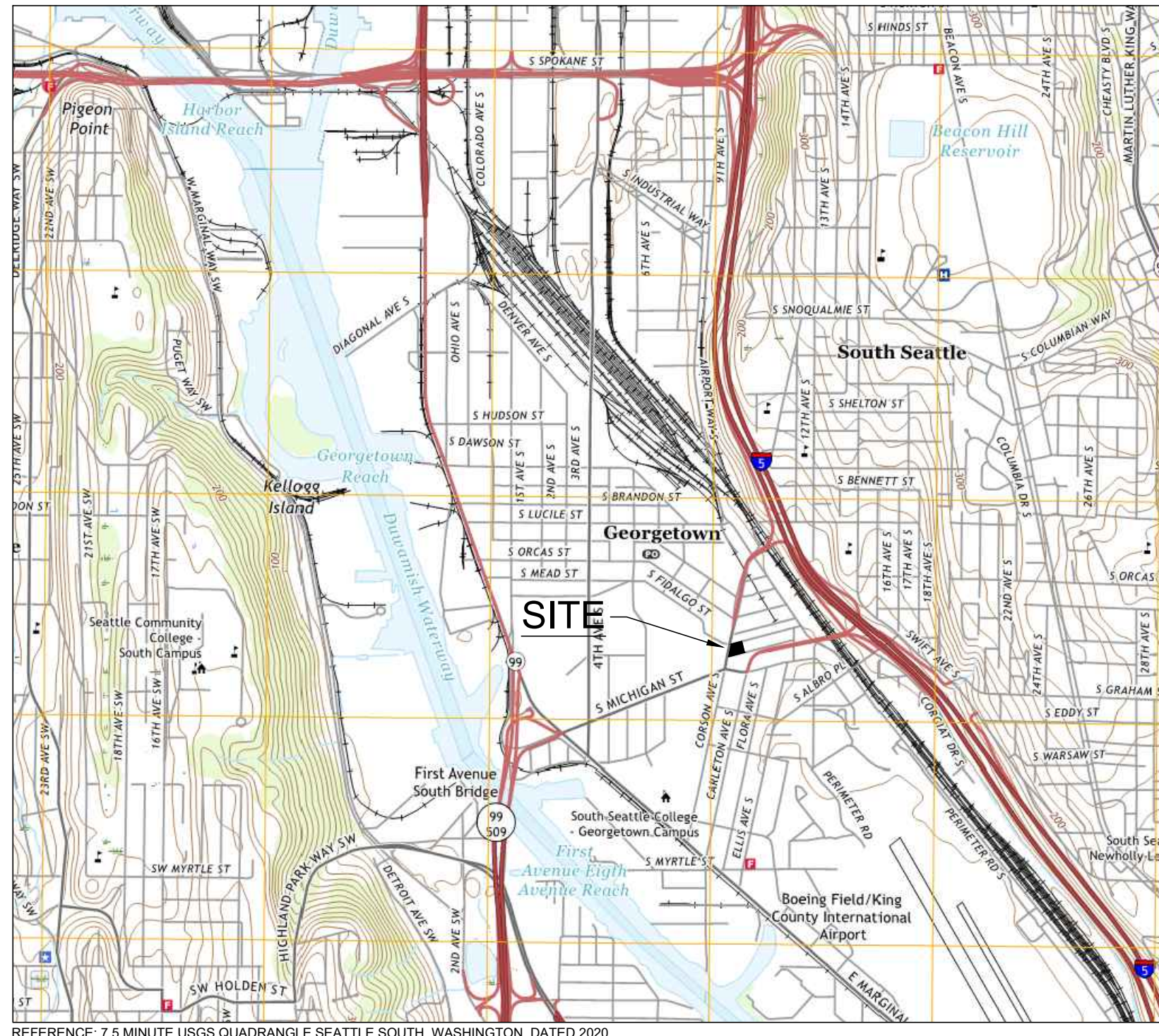
**APPENDIX B
ENGINEERING DESIGN**

PLAN OF OPERATIONS
The Recycling Depot
6004 Corson Avenue South
Seattle, Washington

Farallon PN: 2325-001

RECYCLING DEPOT SEATTLE, WASHINGTON

SITE VICINITY MAP



SITE LOCATION:
6004 CORSON AVENUE SOUTH
SEATTLE, WASHINGTON 98108

APN: 6920700060



DIRECTORY

APPLICANT:
RECYCLING DEPOT
6004 CORSON AVENUE SOUTH
SEATTLE, WASHINGTON 98108

CONTACT: CATHERINE ADAMS
TEL: (206) 940-0757
EMAIL: CATHERINE@ISLANDRECYCLING.COM

CIVIL ENGINEER:
FARALLON CONSULTING, L.L.C.
975 5TH AVENUE NORTHWEST
ISSAQUAH, WASHINGTON 98027

CONTACT: CHRISTOPHER P. KOVAC, P.E.
TEL: (425) 394-4419
EMAIL: CKOVAC@FARALLONCONSULTING.COM

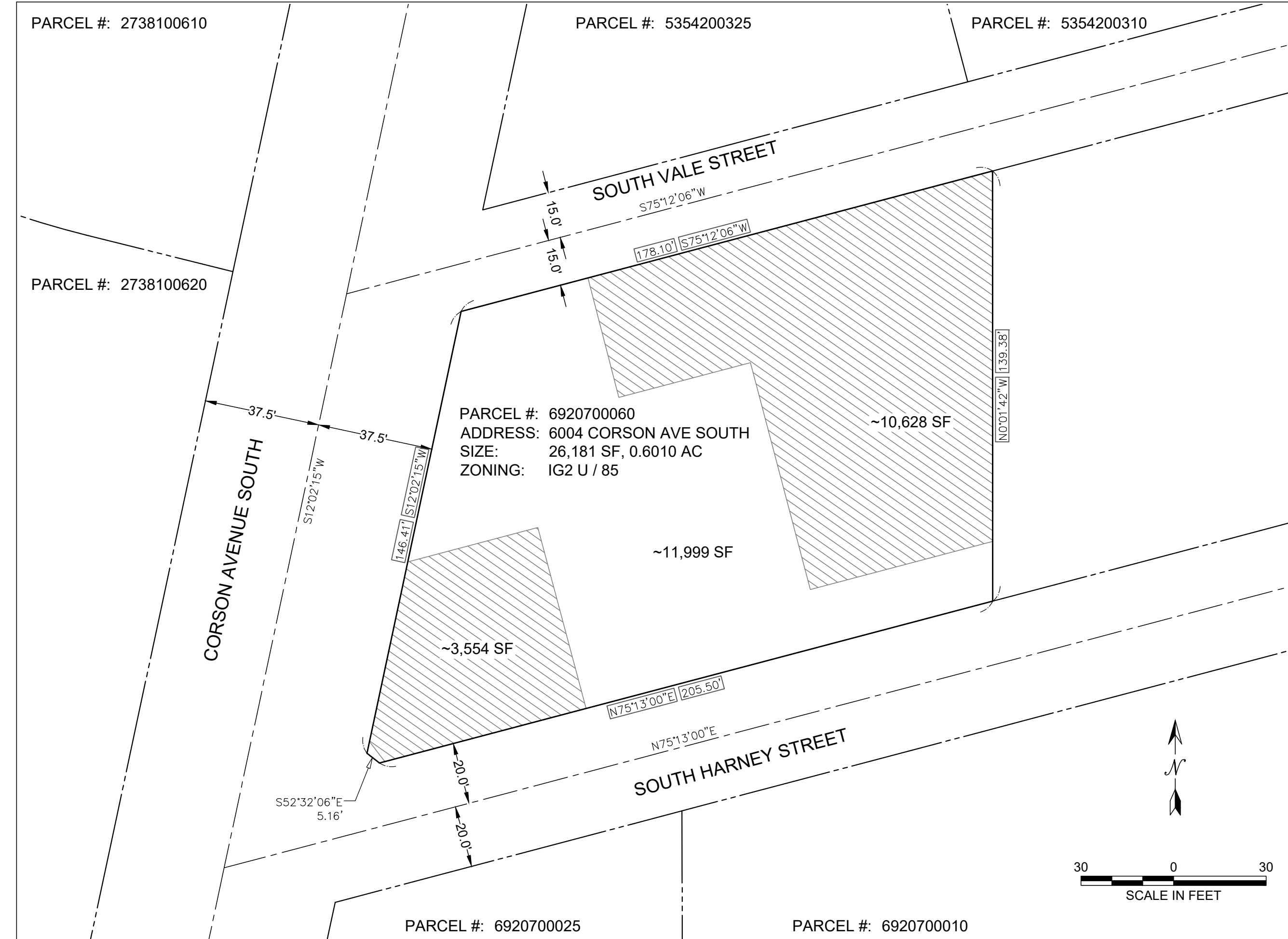
OWNER:
A SUNNY PLACE, LLC
219 POIPIU DRIVE
HONOLULU, HAWAII 96825

CONTACT: JAMES NUTTER
TEL: (808) 216-9777
EMAIL: JIM@ISLANDRECYCLING.COM

ENVIRONMENTAL CONSULTANT:
FARALLON CONSULTING, L.L.C.
1809 7TH AVENUE, SUITE 1111
SEATTLE, WASHINGTON 98101

CONTACT: SUZANNE E. STUMPF, P.E.
TEL: (425) 394-4442
EMAIL: SSTUMPF@FARALLONCONSULTING.COM

PROJECT ZONING DATA



PARCEL LEGAL DESCRIPTION:

LOTS 1 THROUGH 8 INCLUSIVE, BLOCK 2, PUBLIC BENEFIT SUBDIVISION TRACT 17, CITY OF GEORGETOWN, ACCORDING TO THE PLAT RECORDED IN VOLUME 8 OF PLATS, PAGE 34, IN KING COUNTY, WASHINGTON;

EXCEPT THE WEST 15 FEET OF LOTS 4 THROUGH 8 FOR STREET;

TOGETHER WITH THE VACATED ALLEY ADJACENT;

EXCEPT THAT PORTION CONVEYED TO THE CITY OF SEATTLE FOR STREET PURPOSES BY DEED RECORDED UNDER RECORDING NUMBER 20170523000367;

SITUATE IN THE CITY OF SEATTLE, COUNTY OF KING, STATE OF WASHINGTON.

DRAWING INDEX

SHEET #	SHEET NAME
C0.10	PROJECT COVER SHEET
C3.00	SITE PLAN
C3.10	SITE OPERATIONS PLAN

LEGEND

EXISTING	PROPOSED	DESCRIPTION
D		STORM DRAIN LINE
W		WATER LINE
S		SANITARY SEWER LINE
OH-E		SANITARY SEWER LATERAL LINE
		OVERHEAD ELECTRIC LINE
		EDGE OF ASPHALT
X		CHAIN LINK FENCE
		GROUND CONTOUR
		STORM DRAIN MAHOLE
		STORM DRAIN CATCH BASIN
		WATER VALVE
		FIRE HYDRANT
		WATER METER
		SANITARY SEWER MANHOLE
		UTILITY POLE
		UTILITY POLE ANCHOR
		BUILDING
		CONCRETE SURFACE
		ASPHALT AND/OR CONCRETE SURFACE
		GRAVEL SURFACE
		FACILITY LAND USE EXCLUSION AREA

DATE	REVISION DESCRIPTION	BY	CHK	APP
07/17/2020	SOLID WASTE PERMIT APPLICATION SUBMITTAL	LNT	SS	CPK

PRELIMINARY PLANS
NOT FOR CONSTRUCTION

PREPARED BY:
FARALLON CONSULTING
675 5th Avenue Northwest
Issaquah, Washington 98027
(425) 295-0800
farallonconsulting.com

PREPARED FOR:
Recycling Depot
RECYCLING DEPOT
6004 CORSON AVENUE SOUTH
SEATTLE, WASHINGTON 98108
ASSESSORS PARCEL NO.: 6920700060

PROJECT COVER AND ZONING
DATA SHEET

6004 CORSON AVENUE SOUTH
SEATTLE, WASHINGTON 98108
ASSESSORS PARCEL NO.: 6920700060

811
Know what's below.
Call before you dig.

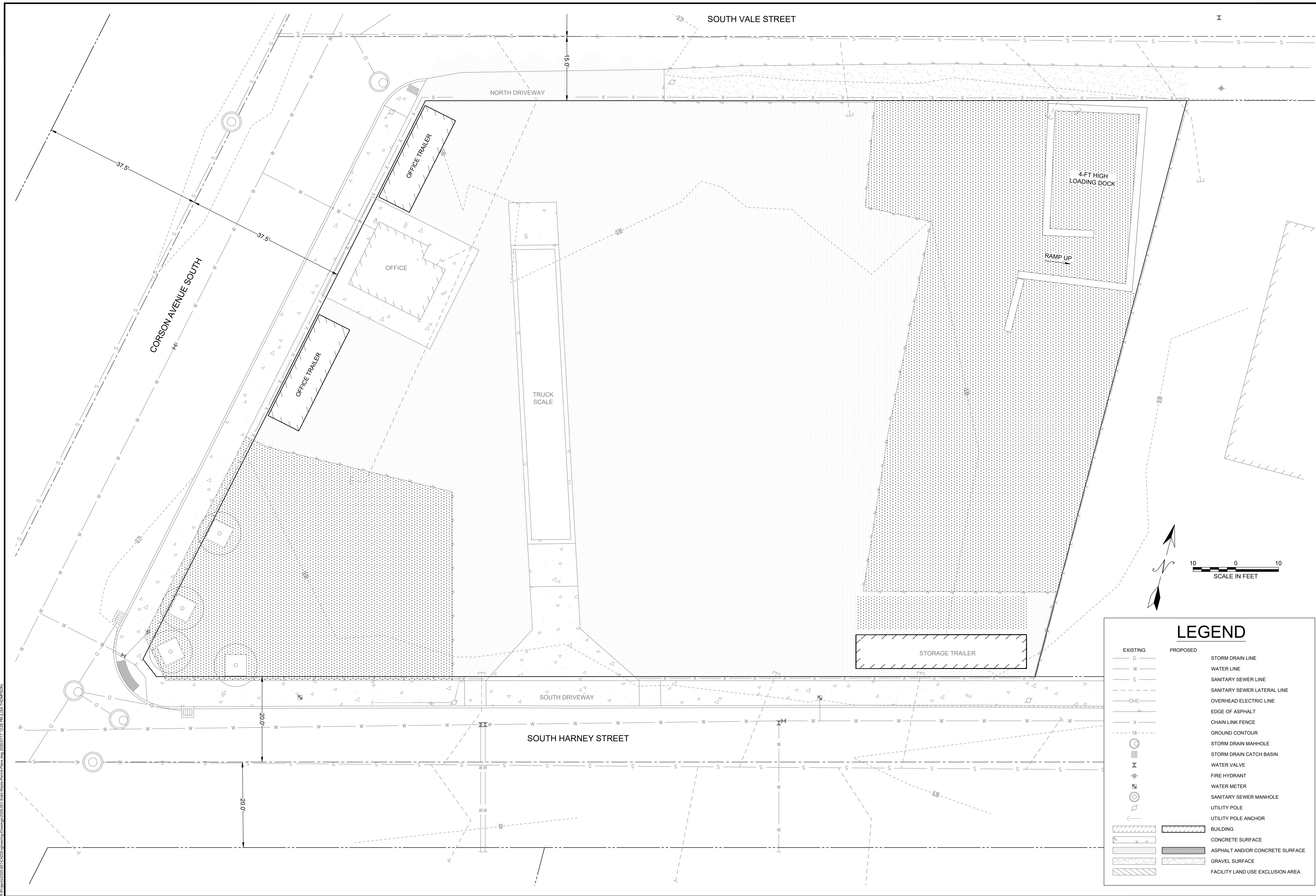
PROJECT LOCATION (S.T.R.):
PORTIONS OF THE SW 1/4
OF THE SE 1/4 OF
SEC. 20, TWP. 24N, RNG. 04E, W.M.

JURISDICTION FILE NO.:
###

FARALLON PROJECT NO.:
2325-001

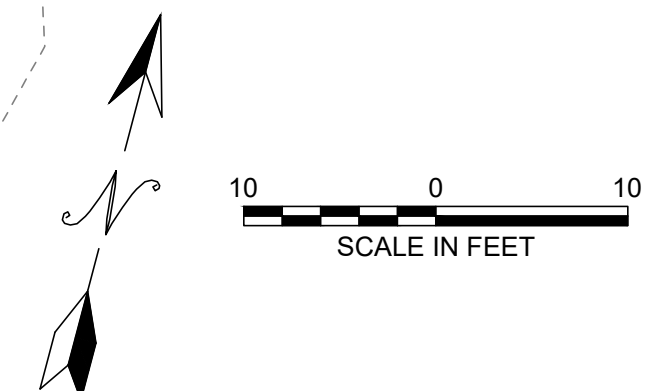
SHEET
C0.10

R:\P\6920700060\CD\Engineering\Drawings\2325-001-6004 Corson Avenue South.dwg, 2020/07/17, 11:02 AM (LINA.THOOMPSON)



LEGEND

EXISTING	PROPOSED	
D	—	STORM DRAIN LINE
W	—	WATER LINE
S	—	SANITARY SEWER LINE
OHE	—	SANITARY SEWER LATERAL LINE
X	—	OVERHEAD ELECTRIC LINE
18	—	EDGE OF ASPHALT
⊙	⊙	CHAIN LINK FENCE
⊙	⊙	GROUND CONTOUR
⊙	⊙	STORM DRAIN MAH-HOLE
⊙	⊙	STORM DRAIN CATCH BASIN
⊙	⊙	WATER VALVE
⊙	⊙	FIRE HYDRANT
⊙	⊙	WATER METER
⊙	⊙	SANITARY SEWER MANHOLE
⊙	⊙	UTILITY POLE
⊙	⊙	UTILITY POLE ANCHOR
▨	▨	BUILDING
▨	▨	CONCRETE SURFACE
▨	▨	ASPHALT AND/OR CONCRETE SURFACE
▨	▨	GRAVEL SURFACE
▨	▨	FACILITY LAND USE EXCLUSION AREA



DATE	REVISION/DESCRIPTION	BY	CHKD.	APP.
07.17.2020	SOLID WASTE PERMIT APPLICATION SUBMITTAL	LNT	SS	CPK

PRELIMINARY PLANS
NOT FOR CONSTRUCTION

PREPARED BY:
FARALLON CONSULTING
 676 5th Avenue Northwest
 Issaquah, Washington 98027
 (425) 295-0900
 farallonconsulting.com

PREPARED FOR:
the Recycling Depot
 RECYCLING DEPOT
 6804 CORSON AVENUE SOUTH
 SEATTLE, WASHINGTON 98106

SITE PLAN

6004 CORSON AVENUE SOUTH
 SEATTLE, WASHINGTON 98106
 ASSESSORS PARCEL NO.: 692700860

811
 Know what's below.
 Call before you dig.

PROJECT LOCATION (S.T.R.):
 PORTIONS OF THE SW 1/4
 OF THE SE 1/4 OF
 SEC. 20, TWP. 24N, RNG. 04E, W.M.

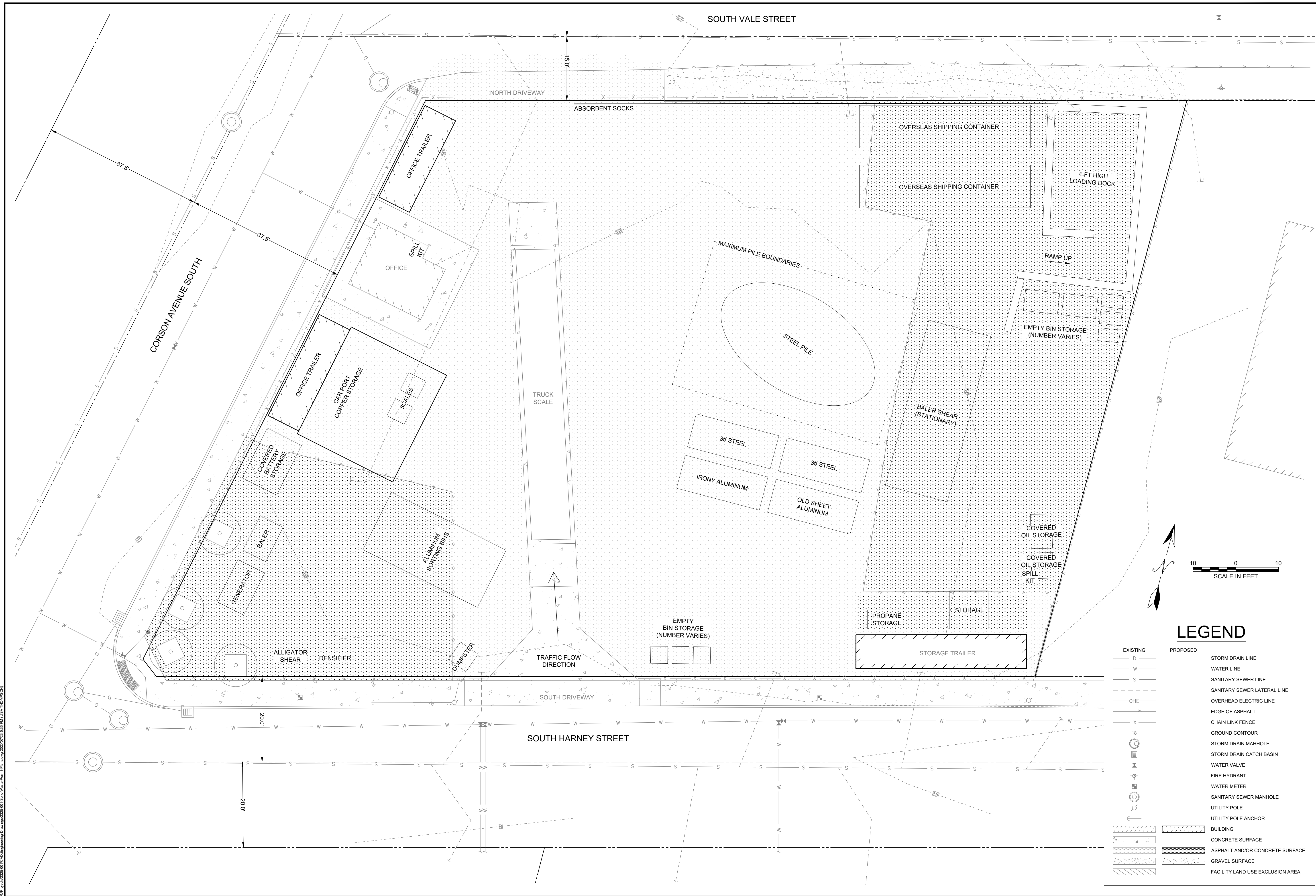
JURISDICTION FILE NO.:
 #####

FARALLON PROJECT NO.:
 2325-01

SHEET

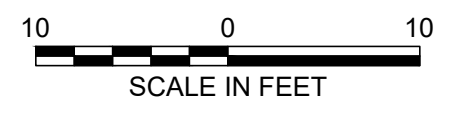
C3.00

R:\P\60042325-01\CAD\Engineering\Change\2325-01_Solid Waste Permit.dwg, 2020/07/17 12:28 PM (LISA THOMPSON)



LEGEND

EXISTING	PROPOSED	
D	---	STORM DRAIN LINE
W	---	WATER LINE
S	---	SANITARY SEWER LINE
OHE	---	SANITARY SEWER LATERAL LINE
X	---	OVERHEAD ELECTRIC LINE
18	---	EDGE OF ASPHALT
⊙	---	CHAIN LINK FENCE
⊙	---	GROUND CONTOUR
⊙	---	STORM DRAIN MAH-HOLE
⊙	---	STORM DRAIN CATCH BASIN
⊙	---	WATER VALVE
⊙	---	FIRE HYDRANT
⊙	---	WATER METER
⊙	---	SANITARY SEWER MANHOLE
⊙	---	UTILITY POLE
⊙	---	UTILITY POLE ANCHOR
▭	▭	BUILDING
▭	▭	CONCRETE SURFACE
▭	▭	ASPHALT AND/OR CONCRETE SURFACE
▭	▭	GRAVEL SURFACE
▭	▭	FACILITY LAND USE EXCLUSION AREA



<p>PREPARED BY: FARALLON CONSULTING 676 5th Avenue Northwest Issaquah, Washington 98027 (425) 295-0800 farallonconsulting.com</p>	<p>PREPARED FOR: RECYCLING DEPOT 6804 CORSON AVENUE SOUTH SEATTLE, WASHINGTON 98108</p>
<p>SITE OPERATIONS PLAN</p>	
<p>6004 CORSON AVENUE SOUTH SEATTLE, WASHINGTON 98108 ASSESSORS PARCEL NO.: 692700860</p>	
<p>811 Know what's below. Call before you dig.</p>	
<p>PROJECT LOCATION (S.T.R.): PORTIONS OF THE SW 14 OF THE SE 14 OF SEC. 20, TWP. 24N, RNG. 04E, W.M.</p>	
<p>JURISDICTION FILE NO.: ###</p>	
<p>FARALLON PROJECT NO.: 2325-01</p>	
<p>SHEET</p>	
<p>C3.10</p>	

PRELIMINARY PLANS
NOT FOR CONSTRUCTION

DATE	REVISION DESCRIPTION	BY	CHKD.	APP.
07.17.2020	SOLID WASTE PERMIT APPLICATION SUBMITTAL	LNT	SS	CPK

R:\P\6004-2325-01\CAD\Operations\Operations.dwg, 2020/07/23, 5:35 PM (LISA THOMPSON)

**APPENDIX C
ANNUAL REPORTS**

PLAN OF OPERATIONS
The Recycling Depot
6004 Corson Avenue South
Seattle, Washington

Farallon PN: 2325-001

Seattle Recycling and Reuse Annual Report for 2019
Business/Company Information

Business Name	The Recycling Depot
Contact Person	Catherine Adams
Contact Person's Title	Office manager
Telephone	206-325-7288
Fax	206-325-0883
Email	catherine@islandrecycling.com

Mailing Address

Mail Address	6004 Corson Ave S
Mail City	Seattle
Mail State	WA
Mail Zip	98108

Business Location (if different)

Location Address	
Location City	
Location State	
Location Zip	

(put cursor over word "Collector" or "Processor" to see definition)

Are you a Collector?	Yes
Are you a Processor?	Yes

Did you operate in 2019?	Yes
--------------------------	-----

When you finish to fill the report out, please send it to

Business Number	26525

Seattle Recycling Annual Report Materials Form

City of Origin: Seattle

Reporting year: 2019

When you finish to fill the report out,
please send it to

SPU_recyclerlicense@seattle.gov

10,370.00

Material Name (click on box and choose from list)	Material Description (Type in a description of the material)	Tons
5. Aluminum cans	Aluminum Cans	46.00
8. Non-ferrous metals	Other aluminun	108.00
10. Electronics or computers	Computers and related parts	3.00
17. Vehicle batteries	Batteries	48.00
41. Other recycled materials (write in description in next column)	Brass	29.00
7. Ferrous metals	Heavy melt steel	8,235.00
8. Non-ferrous metals	Copper	86.00
8. Non-ferrous metals	Insulated Wire	86.00
8. Non-ferrous metals	Lead	6.00

Material Name (click on box and choose from list)	Material Description (Type in a description of the material)	Tons
8. Non-ferrous metals	Alternators, Catalytic Convertors, Compressors, Starters	68.00
8. Non-ferrous metals	Elements, breakage	243.00
7. Ferrous metals	Steel	1,407.00
8. Non-ferrous metals	Silver, titanium, tin, Zinc	5.00

Material Destination and Final Use Form

10,370.00	Tons Received	Error! Tons Not Equal. Tons Received must equal Tons Sold
7,800.00	Total Tons Sold	

When you finish to fill the report out, please send it to SPU_recyclerlicense@seattle.gov

If Company who received your material is located in Seattle please look for their name in the drop down list

Please click on box below and select final use from drop down list

Please type in a description if you wish

Scroll to the right to see all the fields

Material Name	Material Description (Type in a description of the material)	Tons	Seattle Receiving Company- Check dropdown	Receiving Company- Not in drop down - please type in	Buyer's Location (City, State)	Final Use of Material (select from drop down)	Final Use Description
17. Vehicle batteries	Batteries	48.00	BATTERY SYSTEMS INC		Renton, WA	Recycle	
5. Aluminum cans	Aluminum Cans	46.00		CalBag	Tacoma, WA	Recycle	
8. Non-ferrous metals	Other Aluminum	51.00		CalBag	Tacoma, WA		
8. Non-ferrous metals	Brass	8.00		CalBag	Tacoma, WA	Recycle	
10. Electronics or computers	Computers/laptops/	3.00		CalBag	Tacoma, WA	Recycle	
8. Non-ferrous metals	Copper	25.00		CalBag	Tacoma, WA	Recycle	
8. Non-ferrous metals	Elements/breakage (as in bits and pieces)	3.00		CalBag	Tacoma, WA	Recycle	
8. Non-ferrous metals	Insulated Wire	17.00		CalBag	Tacoma, WA	Recycle	
8. Non-ferrous metals	Silver, zinc, titanium, tin	1.00		CalBag	Tacoma, WA	Recycle	
7. Ferrous metals	HMS Mixed	3.00		Calendar Club South Sound	Olympia, WA	Recycle	
7. Ferrous metals	HMS Prep	20.00		Daido	El Segundo, CA	Processing	
7. Ferrous metals	HMS Prep	4,523.00		David Joseph	South Carolina	Processing	
41. Other recycled materials (write in description in next column)	Catalytic Convertors	1.00		M & H Tech	Aumsville, OR	Processing	
7. Ferrous metals	HMS Prep	1,737.00		Nucor Steel	Seattle, WA	Processing	

(Click on white boxes choose material from drop down list)	Material Description (Type in a description of the material)	Tons	Seattle Receiving Company- Check dropdown	Receiving Company- Not in drop down - please type in	Buyer's Location (City, State)	Final Use of Material (select from drop down)	Final Use Description
Material Name							
8. Non-ferrous metals	Aluminum	3.00	Pacific Iron And Metal			Recycle	
7. Ferrous metals	Brass	15.00	Pacific Iron And Metal			Recycle	
10. Electronics or computers	Comp, laptops, cell phones	0.50	Pacific Iron And Metal			Recycle	
8. Non-ferrous metals	Copper	56.00	Pacific Iron And Metal			Recycle	
8. Non-ferrous metals	Insulated Wire	76.00	Pacific Iron And Metal			Recycle	
8. Non-ferrous metals	lead	7.00	Pacific Iron And Metal			Recycle	
7. Ferrous metals	Steel	5.00	Pacific Iron And Metal			Recycle	
8. Non-ferrous metals	Silver, zinc,	0.50	Pacific Iron And Metal			Recycle	
7. Ferrous metals	HMS Prep	370.00		Phillip Hoffman	LV, NV	Processing	
8. Non-ferrous metals	Insulated Wire	2.00		Rongzen Int'l	Kent, WA	Processing	
7. Ferrous metals	Aluminum	610.00	Seattle Iron And Metals Corporation			Processing	
8. Non-ferrous metals	Brass	10.00	Seattle Iron And Metals Corporation			Processing	
8. Non-ferrous metals	Copper	15.00	Seattle Iron And Metals Corporation			Processing	
7. Ferrous metals	Breakage	144.00	Seattle Iron And Metals Corporation			Processing	



Annual Report – Recycling Facility

Facility Identification Information

Company Name	The Recycling Depot		Facility Name	Same		Facility ID	3309
Contact Person	Catherine Adams		Title	Office Mgr			
Telephone	206 325-7288	Fax			E-mail	Catherine@islandrecycling.com	
Mailing Address	6004 Cowan Ave S		Location Address	Same			
City, State, Zip	Seattle, WA 98108		City, State, Zip				

Did you operate in ____? **Yes** *If yes, proceed with completing entire survey.*
 No *If no, answer the following questions, sign, date, and return this sheet only.*

When did you stop operations? _____

Do you plan to restart? No Yes

When? _____

During the reporting year, were there any changes in your management practices that impacted your operations?

No Yes (specify) _____

Are there any new solid waste activities planned at your site in the next year?

No Yes (specify) _____

Prepared by: Catherine Adams Date: 4.9.2020



Annual Report – Recycling Facility Materials Form

Material Source (county): <u>King</u> Photocopy this form for multiple counties (and Seattle) OR use the County Form on next page.			Reporting Year: <u>2020</u>	Facility ID: <u>3309</u>
Material (see definitions)	Material Description (if needed)	Tons or percent Commercial	Tons or percent Residential	Total Tons from County
1. Newspaper				
2. Cardboard				
3. High-Grade Paper				
4. Mixed Waste Paper				
5. Cartons				
6. Container Glass				
7. PET Plastics				
8. HDPE Plastics				
9. LDPE Plastics				
10. Other Recyclable Plastics				
11. Aluminum Cans		<u>46</u>		<u>46</u>
12. Steel Cans				
13. Ferrous Metals (iron, steel)		<u>9642</u>		<u>9642</u>
14. Nonferrous Metals (excluding aluminum cans)		<u>631</u>		<u>631</u>
15. Appliances (white goods)				
16. Electronics		<u>3</u>		<u>3</u>
17. Fluorescents (CFL, 4ft, 8ft)				
18. Antifreeze				
19. Used Oil				
20. Tires				
21. Vehicle Batteries		<u>48</u>		<u>48</u>
22. Household Batteries				
23. Asphalt				
24. Concrete				
25. Construction/Demolition				
26. Wood Waste				
27. Landclearing Debris				
28. Yard Debris				
29. Food and/or Food Scraps				
30. Textiles (rags, clothing)				
<i>Continues on next page.</i>				



Annual Report – Recycling Facility

Materials Form cont.

31. Commingled Recyclables (specify materials in mix)				
32. Other Recyclables (specify)				
Required				tons
Amount of Material Disposed (not recycled):				
If you do not know the amount disposed or there was no disposal, estimate the percentage of non-recyclable materials in incoming loads:				%
Total Tons Collected for Recycling: (include all incoming materials)		10370		tons



Annual Report – Recycling Facility County/City Form

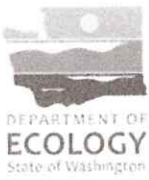
Type of Material: <u>Copper</u>			Reporting Year: <u>2020</u>	Facility ID: <u>3309</u>
Photocopy this form for each different material type OR use the Materials Form on the previous page.				
County	Material Description (if needed)	Tons or Percent Commercial	Tons or Percent Residential	Total Tons or Percent from County
Adams				
Asotin				
Benton				
Chelan				
Clallam				
Clark				
Columbia				
Cowlitz				
Douglas				
Ferry				
Franklin				
Garfield				
Grant				
Grays Harbor				
Island				
Jefferson				
King*				
City of Seattle	<u>71</u>			<u>71</u>
Kitsap				
Kittitas				
Klickitat				
Lewis				
Lincoln				
Mason				
Okanogan				
Pacific				
Pend Oreille				
Pierce	<u>26</u>			<u>26</u>
San Juan				
Skagit				
Skamania				
Snohomish				
Spokane				
Stevens				
Thurston				
Wahkiakum				
Walla Walla				
Whatcom				
Whitman				
Yakima				
Out of State				
		Required Tons Disposed (or estimate a percent disposed):		
Total Tons Collected/Recycled: (include all incoming materials)				<u>97</u> tons
*Do not include the City of Seattle tons in the King County total.				



Annual Report – Recycling Facility

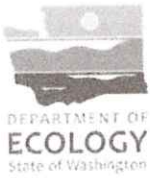
County/City Form

Type of Material: <u>Galleries</u>		Reporting Year:	Facility ID: <u>3309</u>	
Photocopy this form for each different material type OR use the Materials Form on the previous page.				
County	Material Description (if needed)	Tons or Percent Commercial	Tons or Percent Residential	Total Tons or Percent from County
Adams				
Asotin				
Benton				
Chelan				
Clallam				
Clark				
Columbia				
Cowlitz				
Douglas				
Ferry				
Franklin				
Garfield				
Grant				
Grays Harbor				
Island				
Jefferson				
King*	<u>48</u>			<u>48</u>
City of Seattle	<u>Co</u>			<u>Co</u>
Kitsap				
Kittitas				
Klickitat				
Lewis				
Lincoln				
Mason				
Okanogan				
Pacific				
Pend Oreille				
Pierce				
San Juan				
Skagit				
Skamania				
Snohomish				
Spokane				
Stevens				
Thurston				
Wahkiakum				
Walla Walla				
Whatcom				
Whitman				
Yakima				
Out of State				
		Required Tons Disposed (or estimate a percent disposed):		
Total Tons Collected/Recycled: (include all incoming materials)				<u>54</u> tons
*Do not include the City of Seattle tons in the King County total.				



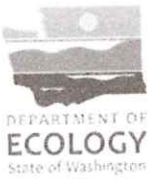
Annual Report – Recycling Facility County/City Form

Type of Material: <u>Aluminum Cans</u> Photocopy this form for each different material type OR use the Materials Form on the previous page.			Reporting Year: <u>2020</u>	Facility ID: <u>3309</u>
County	Material Description (if needed)	Tons or Percent Commercial	Tons or Percent Residential	Total Tons or Percent from County
Adams				
Asotin				
Benton				
Chelan				
Clallam				
Clark				
Columbia				
Cowlitz				
Douglas				
Ferry				
Franklin				
Garfield				
Grant				
Grays Harbor				
Island				
Jefferson				
King*				
City of Seattle				
Kitsap				
Kittitas				
Klickitat				
Lewis				
Lincoln				
Mason				
Okanogan				
Pacific				
Pend Oreille				
Pierce	<u>51</u>			<u>51</u>
San Juan				
Skagit				
Skamania				
Snohomish				
Spokane				
Stevens				
Thurston				
Wahkiakum				
Walla Walla				
Whatcom				
Whitman				
Yakima				
Out of State				
		Required Tons Disposed (or estimate a percent disposed):		
Total Tons Collected/Recycled: (include all incoming materials)				<u>51</u> tons
*Do not include the City of Seattle tons in the King County total.				



Annual Report – Recycling Facility County/City Form

Type of Material: <u>Aluminum</u> Photocopy this form for each different material type OR use the Materials Form on the previous page.			Reporting Year: <u>2020</u>	Facility ID: <u>3309</u>
County	Material Description (if needed)	Tons or Percent Commercial	Tons or Percent Residential	Total Tons or Percent from County
Adams				
Asotin				
Benton				
Chelan				
Clallam				
Clark				
Columbia				
Cowlitz				
Douglas				
Ferry				
Franklin				
Garfield				
Grant				
Grays Harbor				
Island				
Jefferson				
King*				
City of Seattle	<u>613</u>			<u>613</u>
Kitsap				
Kittitas				
Klickitat				
Lewis				
Lincoln				
Mason				
Okanogan				
Pacific				
Pend Oreille				
Pierce				
San Juan				
Skagit				
Skamania				
Snohomish				
Spokane				
Stevens				
Thurston				
Wahkiakum				
Walla Walla				
Whatcom				
Whitman				
Yakima				
Out of State				
Required Tons Disposed (or estimate a percent disposed):				
Total Tons Collected/Recycled: (include all incoming materials)				<u>613</u> tons
*Do not include the City of Seattle tons in the King County total.				



Annual Report – Recycling Facility

County/City Form

Type of Material: <u>Computers</u> Photocopy this form for each different material type OR use the Materials Form on the previous page.			Reporting Year: <u>2020</u>	Facility ID: <u>3309</u>
County	Material Description (if needed)	Tons or Percent Commercial	Tons or Percent Residential	Total Tons or Percent from County
Adams				
Asotin				
Benton				
Chelan				
Clallam				
Clark				
Columbia				
Cowlitz				
Douglas				
Ferry				
Franklin				
Garfield				
Grant				
Grays Harbor				
Island				
Jefferson				
King*				
City of Seattle	1			1
Kitsap				
Kittitas				
Klickitat				
Lewis				
Lincoln				
Mason				
Okanogan				
Pacific	3			3
Pend Oreille				
Pierce				
San Juan				
Skagit				
Skamania				
Snohomish				
Spokane				
Stevens				
Thurston				
Wahkiakum				
Walla Walla				
Whatcom				
Whitman				
Yakima				
Out of State				
Required Tons Disposed (or estimate a percent disposed):				
Total Tons Collected/Recycled: (include all incoming materials)				4 tons
*Do not include the City of Seattle tons in the King County total.				



Annual Report – Recycling Facility

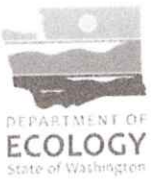
County/City Form

Type of Material: <u>Breakage</u> Photocopy this form for each different material type OR use the Materials Form on the previous page.			Reporting Year: <u>2020</u>	Facility ID: <u>3309</u>
County	Material Description (if needed)	Tons or Percent Commercial	Tons or Percent Residential	Total Tons or Percent from County
Adams				
Asotin				
Benton				
Chelan				
Clallam				
Clark				
Columbia				
Cowlitz				
Douglas				
Ferry				
Franklin				
Garfield				
Grant				
Grays Harbor				
Island				
Jefferson				
King*	96			96
City of Seattle	144			144
Kitsap				
Kittitas				
Klickitat				
Lewis				
Lincoln				
Mason				
Okanogan				
Pacific				
Pend Oreille				
Pierce	3			3
San Juan				
Skagit				
Skamania				
Snohomish				
Spokane				
Stevens				
Thurston				
Wahkiakum				
Walla Walla				
Whatcom				
Whitman				
Yakima				
Out of State				
Required Tons Disposed (or estimate a percent disposed):				
Total Tons Collected/Recycled: (include all incoming materials)				<u>243</u> tons
*Do not include the City of Seattle tons in the King County total.				



Annual Report – Recycling Facility County/City Form

Type of Material: <u>HMS Prep</u>			Reporting Year: <u>2020</u>	Facility ID: <u>3309</u>
Photocopy this form for each different material type OR use the Materials Form on the previous page.				
County	Material Description (if needed)	Tons or Percent Commercial	Tons or Percent Residential	Total Tons or Percent from County
Adams				
Asotin				
Benton				
Chelan				
Clallam				
Clark				
Columbia				
Cowlitz				
Douglas				
Ferry				
Franklin				
Garfield				
Grant				
Grays Harbor				
Island				
Jefferson				
King*				
City of Seattle				
Kitsap				
Kittitas				
Klickitat				
Lewis				
Lincoln				
Mason				
Okanogan				
Pacific				
Pend Oreille				
Pierce				
San Juan				
Skagit				
Skamania				
Snohomish				
Spokane				
Stevens				
Thurston				
Wahkiakum				
Walla Walla				
Whatcom				
Whitman				
Yakima				
Out of State	<u>6280</u>			
Required Tons Disposed (or estimate a percent disposed):				
Total Tons Collected/Recycled: (include all incoming materials)				<u>6280</u> tons
*Do not include the City of Seattle tons in the King County total.				



Annual Report – Recycling Facility County/City Form

Type of Material: <u>Insulated Wire</u>			Reporting Year: <u>2020</u>	Facility ID: <u>3309</u>
Photocopy this form for each different material type OR use the Materials Form on the previous page.				
County	Material Description (if needed)	Tons or Percent Commercial	Tons or Percent Residential	Total Tons or Percent from County
Adams				
Asotin				
Benton				
Chelan				
Clallam				
Clark				
Columbia				
Cowlitz				
Douglas				
Ferry				
Franklin				
Garfield				
Grant				
Grays Harbor				
Island				
Jefferson				
King*				
City of Seattle	<u>76</u>			<u>76</u>
Kitsap				
Kittitas				
Klickitat				
Lewis				
Lincoln				
Mason				
Okanogan				
Pacific				
Pend Oreille				
Pierce	<u>17</u>			<u>17</u>
San Juan				
Skagit				
Skamania				
Snohomish				
Spokane				
Stevens				
Thurston				
Wahkiakum				
Walla Walla				
Whatcom				
Whitman				
Yakima				
Out of State				
Required Tons Disposed (or estimate a percent disposed):				
Total Tons Collected/Recycled: (include all incoming materials)				<u>93</u> tons
*Do not include the City of Seattle tons in the King County total.				



Annual Report – Recycling Facility County/City Form

Type of Material: <u>Brass</u>		Reporting Year: <u>2020</u>	Facility ID: <u>3309</u>
Photocopy this form for each different material type OR use the Materials Form on the previous page.			
County	Material Description (if needed)	Tons or Percent Commercial	Tons or Percent Residential Total Tons or Percent from County
Adams			
Asotin			
Benton			
Chelan			
Clallam			
Clark			
Columbia			
Cowlitz			
Douglas			
Ferry			
Franklin			
Garfield			
Grant			
Grays Harbor			
Island			
Jefferson			
King*			
City of Seattle	<u>25</u>		<u>25</u>
Kitsap			
Kittitas			
Klickitat			
Lewis			
Lincoln			
Mason			
Okanogan			
Pacific			
Pend Oreille			
Pierce	<u>8</u>		<u>8</u>
San Juan			
Skagit			
Skamania			
Snohomish			
Spokane			
Stevens			
Thurston			
Wahkiakum			
Walla Walla			
Whatcom			
Whitman			
Yakima			
Out of State			
		Required Tons Disposed (or estimate a percent disposed):	
Total Tons Collected/Recycled: (include all incoming materials)			<u>33</u> tons
*Do not include the City of Seattle tons in the King County total.			



Annual Report – Recycling Facility

County/City Form

Type of Material: <u>aluminum, Tin, Titanium, Zinc</u>		Reporting Year:	Facility ID:
Photocopy this form for each different material type OR use the Materials Form on the previous page.			
County	Material Description (if needed)	Tons or Percent Commercial	Tons or Percent Residential
Adams			
Asotin			
Benton			
Chelan			
Clallam			
Clark			
Columbia			
Cowlitz			
Douglas			
Ferry			
Franklin			
Garfield			
Grant			
Grays Harbor			
Island			
Jefferson			
King*			
City of Seattle	<u>4</u>		<u>4</u>
Kitsap			
Kittitas			
Klickitat			
Lewis			
Lincoln			
Mason			
Okanogan			
Pacific			
Pend Oreille			
Pierce	<u>1</u>		<u>1</u>
San Juan			
Skagit			
Skamania			
Snohomish			
Spokane			
Stevens			
Thurston			
Wahkiakum			
Walla Walla			
Whatcom			
Whitman			
Yakima			
Out of State			
		Required Tons Disposed (or estimate a percent disposed):	
Total Tons Collected/Recycled: (include all incoming materials)			<u>5</u> tons
*Do not include the City of Seattle tons in the King County total.			



Annual Report – Recycling Facility County/City Form

Type of Material: <u>HMS Mixed</u> Photocopy this form for each different material type OR use the Materials Form on the previous page.			Reporting Year: <u>2020</u>	Facility ID: <u>3309</u>
County	Material Description (if needed)	Tons or Percent Commercial	Tons or Percent Residential	Total Tons or Percent from County
Adams				
Asotin				
Benton				
Chelan				
Clallam				
Clark				
Columbia				
Cowlitz				
Douglas				
Ferry				
Franklin				
Garfield				
Grant				
Grays Harbor				
Island				
Jefferson				
King*				
City of Seattle	<u>2570</u>			<u>2570</u>
Kitsap				
Kittitas				
Klickitat				
Lewis				
Lincoln				
Mason				
Okanogan				
Pacific				
Pend Oreille				
Pierce				
San Juan				
Skagit				
Skamania				
Snohomish				
Spokane				
Stevens				
Thurston				
Wahkiakum				
Walla Walla				
Whatcom				
Whitman				
Yakima				
Out of State				
Required Tons Disposed (or estimate a percent disposed):				
Total Tons Collected/Recycled: (include all incoming materials)				<u>2570</u> tons
*Do not include the City of Seattle tons in the King County total.				



Annual Report – Recycling Facility County/City Form

Type of Material: <u>Catalytic Converters, Starters</u> Photocopy this form for each different material type OR use the Materials Form on the previous page. <u>Compressor</u>			Reporting Year: <u>2020</u>	Facility ID: <u>3309</u>
County	Material Description (if needed)	Tons or Percent Commercial	Tons or Percent Residential	Total Tons or Percent from County
Adams				
Asotin				
Benton				
Chelan				
Clallam				
Clark				
Columbia				
Cowlitz				
Douglas				
Ferry				
Franklin				
Garfield				
Grant				
Grays Harbor				
Island				
Jefferson				
King*	<u>87</u>			<u>87</u>
City of Seattle				
Kitsap				
Kittitas				
Klickitat				
Lewis				
Lincoln				
Mason				
Okanogan				
Pacific				
Pend Oreille				
Pierce				
San Juan				
Skagit				
Skamania				
Snohomish				
Spokane				
Stevens				
Thurston				
Wahkiakum				
Walla Walla				
Whatcom				
Whitman				
Yakima				
Out of State				<u>1</u>
Required Tons Disposed (or estimate a percent disposed):				
Total Tons Collected/Recycled: (include all incoming materials)				<u>88</u> tons
*Do not include the City of Seattle tons in the King County total.				



Annual Report – Recycling Facility County/City Form

Type of Material: _____ <i>Lead</i> _____		Reporting Year: <i>2020</i>	Facility ID: <i>3309</i>	
Photocopy this form for each different material type OR use the Materials Form on the previous page.				
County	Material Description (if needed)	Tons or Percent Commercial	Tons or Percent Residential	Total Tons or Percent from County
Adams				
Asotin				
Benton				
Chelan				
Clallam				
Clark				
Columbia				
Cowlitz				
Douglas				
Ferry				
Franklin				
Garfield				
Grant				
Grays Harbor				
Island				
Jefferson				
King*				
City of Seattle	<i>7</i>			<i>7</i>
Kitsap				
Kittitas				
Klickitat				
Lewis				
Lincoln				
Mason				
Okanogan				
Pacific				
Pend Oreille				
Pierce				
San Juan				
Skagit				
Skamania				
Snohomish				
Spokane				
Stevens				
Thurston				
Wahkiakum				
Walla Walla				
Whatcom				
Whitman				
Yakima				
Out of State				
		Required Tons Disposed (or estimate a percent disposed):		
Total Tons Collected/Recycled: (include all incoming materials)				<i>7</i> tons
*Do not include the City of Seattle tons in the King County total.				



Annual Report – Recycling Facility County/City Form

Type of Material: _____ 5/5 _____ Photocopy this form for each different material type OR use the Materials Form on the previous page.			Reporting Year: 2020	Facility ID: 3309
County	Material Description (if needed)	Tons or Percent Commercial	Tons or Percent Residential	Total Tons or Percent from County
Adams				
Asotin				
Benton				
Chelan				
Clallam				
Clark				
Columbia				
Cowlitz				
Douglas				
Ferry				
Franklin				
Garfield				
Grant				
Grays Harbor				
Island				
Jefferson				
King*				
City of Seattle	239			239
Kitsap				
Kittitas				
Klickitat				
Lewis				
Lincoln				
Mason				
Okanogan				
Pacific				
Pend Oreille				
Pierce				
San Juan				
Skagit				
Skamania				
Snohomish				
Spokane				
Stevens				
Thurston				
Wahkiakum				
Walla Walla				
Whatcom				
Whitman				
Yakima				
Out of State				
Required Tons Disposed (or estimate a percent disposed):				
Total Tons Collected/Recycled: (include all incoming materials)				239 tons
*Do not include the City of Seattle tons in the King County total.				



Annual Report – Recycling Facility

Destination and Final Use of Materials Form

For multiple destinations of same material, use blank lines at the end of the form.				Facility ID:
Material	Outgoing Tons	To Which Company	Destination Location (City, State, or County of Export)	Final Use ** (See below)
1. Newspaper				
2. Cardboard				
3. High-Grade Paper				
4. Mixed Waste Paper				
5. Cartons				
6. Container Glass				
7. PET Plastics				
8. HDPE Plastics				
9. LDPE Plastics				
10. Other Recyclable Plastics				
11. Aluminum Cans				
12. Steel Cans				
13. Ferrous Metals (iron, steel)	2601	Seattle Iron	Seattle	Recycle
14. Nonferrous Metals (excluding aluminum cans)	1635	Seattle Iron	"	"
15. Appliances (white goods)				
16. Electronics (specify type)	Compressors 8	Target Metals	Auburn	Recycle
17. Fluorescents (CFL, 4ft, 8ft)				
18. Antifreeze				
19. Used Oil				
20. Tires				
21. Vehicle Batteries				
22. Household Batteries				
23. Asphalt				
24. Concrete				
25. Construction/Demolition				
26. Wood Waste				
27. Landclearing Debris				
28. Yard Debris				
29. Food and/or Food Scraps				
30. Textiles (rags, clothing)				
31. Commingled Recyclables (specify materials in mix)				
32. Other Recyclables (specify)				
Alternators	3	WA Metals & Develop	Kent	Recycle
Breakers	960	"	Kent	"
Starters	4	"	Kent	"
Outgoing Tons for Disposal:				Disposal
Outgoing Tons for Recycling:				
Total Outgoing Tons: (including disposal)	3347			

**Please specify final use of material. Possible final uses include: recycling, composting, reuse, aggregate, burning for energy, retreading (tires), stockpiling, or disposal.



Annual Report – Recycling Facility

Destination and Final Use of Materials Form

For multiple destinations of same material, use blank lines at the end of the form.				Facility ID:
Material	Outgoing Tons	To Which Company	Destination Location (City, State, or County of Export)	Final Use ** (See below)
1. Newspaper				
2. Cardboard				
3. High-Grade Paper				
4. Mixed Waste Paper				
5. Cartons				
6. Container Glass				
7. PET Plastics				
8. HDPE Plastics				
9. LDPE Plastics				
10. Other Recyclable Plastics				
11. Aluminum Cans				
12. Steel Cans	5	Pac Iron	Seattle	Recycle
13. Ferrous Metals (iron, steel)				
14. Nonferrous Metals (excluding aluminum cans)	15	Pac Iron	Seattle	Recycle
Brass				
Ferrous	320	Philip Hoffman	Las Vegas	Processing
Wire	2	Pong Johnson	Wash, WA	Recycle
17. Fluorescents (CFL, 4ft, 8ft)				
18. Antifreeze				
19. Used Oil				
20. Tires				
21. Vehicle Batteries				
22. Household Batteries				
23. Asphalt				
24. Concrete				
25. Construction/Demolition				
26. Wood Waste				
27. Landclearing Debris				
28. Yard Debris				
29. Food and/or Food Scraps				
30. Textiles (rags, clothing)				
31. Commingled Recyclables (specify materials in mix)				
32. Other Recyclables (specify)				
Copper	56	Pac Iron	Seattle	Recycle
Wire	76	Pac Iron	Seattle	Recycle
Lead	7	Pac Iron	Seattle	Recycle
Outgoing Tons for Disposal:				Disposal
Outgoing Tons for Recycling:				
Total Outgoing Tons: (including disposal)	531			

**Please specify final use of material. Possible final uses include: recycling, composting, reuse, aggregate, burning for energy, retreading (tires), stockpiling, or disposal.



Annual Report – Recycling Facility

Destination and Final Use of Materials Form

For multiple destinations of same material, use blank lines at the end of the form.				Facility ID: 3309
Material	Outgoing Tons	To Which Company	Destination Location (City, State, or County of Export)	Final Use ** (See below)
1. Newspaper				
2. Cardboard				
3. High-Grade Paper				
4. Mixed Waste Paper				
5. Cartons				
6. Container Glass				
7. PET Plastics				
8. HDPE Plastics				
9. LDPE Plastics				
10. Other Recyclable Plastics				
11. Aluminum Cans				
12. Steel Cans				
13. Ferrous Metals (iron, steel)	20	Daielo	La Jolla, CA	Processing
14. Nonferrous Metals (excluding aluminum cans)	4523	David Joseph	South Carolina	"
15. Appliances (white goods)				
16. Electronics (specify type)				
17. Fluorescents (CFL, 4ft, 8ft)				
18. Antifreeze				
19. Used Oil				
20. Tires				
21. Vehicle Batteries	54	Battery Systems	Rendon, WA	Recycle
22. Household Batteries				
23. Asphalt				
24. Concrete				
25. Construction/Demolition				
26. Wood Waste				
27. Landclearing Debris				
28. Yard Debris				
29. Food and/or Food Scraps				
30. Textiles (rags, clothing)				
31. Commingled Recyclables (specify materials in mix)				
32. Other Recyclables (specify)				
Catalytic Converters	1	M & H Tech	Anniston, AL	Recycle
Steel	1737	NCCOR	Seattle, WA	Processing
Outgoing Tons for Disposal:				Disposal
Outgoing Tons for Recycling:				
Total Outgoing Tons: (including disposal)	6335			

**Please specify final use of material. Possible final uses include: recycling, composting, reuse, aggregate, burning for energy, retreading (tires), stockpiling, or disposal.

Seattle Recycling and Reuse Annual Report for 2021
Business/Company Information

Business Name	THE RECYCLINGDEPOT, INC.
Contact Person	CATHERINE ADAMS
Contact Person's Title	OFFICE MANAGER
Telephone	206-325-7288
Fax	206-325-0883
Email	CATHERINE@ISLANDRECYLING.COM

Mailing Address

Mail Address	6004 CORSON AVE S
Mail City	SEATTLE
Mail State	WA
Mail Zip	98108

Business Location (if different)

Location Address	
Location City	
Location State	
Location Zip	

(put cursor over word "Collector" or "Processor" to see definition)

Are you a Collector?	YES
Are you a Processor?	YES

Did you operate in 2019?	YES
--------------------------	-----

When you finish to fill the report out, please send it to

Business Number	600-512-824

Seattle Recycling Annual Report Materials Form

City of Origin: Seattle

Reporting year: 2021

When you finish to fill the report out,
please send it to

SPU_recyclerlicense@seattle.gov

8,698.42

Material Name (click on box and choose from list)	Material Description (Type in a description of the material)	Tons
Aluminum cans	ALUMINUM CANS	32.00
Electronics or computers	ELECTRONICS & COMPUTERS	8.00
Ferrous metals	FERROUS METALS	7,465.00
Non-ferrous metals	COPPER	71.00
Non-ferrous metals	INSULATED WIRE	82.00
Non-ferrous metals	SHELVING, BIKES	0.09
Non-ferrous metals	Aluminum	573.00
Non-ferrous metals	Brass	40.00
Non-ferrous metals	STAINLESS STEEL	98.00

Material Name (click on box and choose from list)	Material Description (Type in a description of the material)	Tons
Vehicle batteries	BATTERIES	50.00
Other recycled materials	MOTORS	77.00
Other recycled materials	IRONY METALS	143.00
Other recycled materials	LEAD	10.00
Other recycled materials	CATALYTIC CONVERTORS	0.22
Other recycled materials	BALLAST	27.00
Other recycled materials	SEALED UNITS	20.00
Non-ferrous metals	ALUMINUM	2.11

(Click on white boxes choose material from drop down list) Material Name	Material Description (Type in a description of the material)	Tons	Seattle Receiving Company- Check dropdown	Receiving Company- Not in drop down - please type in	Buyer's Location (City, State)	Final Use of Material (select from drop down)	Final Use Description
Non-ferrous metals	INSULATED WIRE	0.40		METRO METALS	TACOMA, WA	RECYCLE	
Non-ferrous metals	INSULATED WIRE	56.00		SUTTER METALS	TACOMA, WA	RECYCLE	
Non-ferrous metals	SHELVING	0.08	SECOND USE		SEATTLE, WA	REUSE	
Non-ferrous metals	BIKES	0.01	AARON'S BIKES		SEATTLE, WA	REUSE	
Non-ferrous metals	INSULATED WIRE	14.00	Pacific Iron And Metal		SEATTLE, WA	RECYCLE	
Non-ferrous metals	ALUMINUM	526.00	Seattle Iron And Metals Corporation		SEATTLE, WA	RECYCLE	
Non-ferrous metals	ALUMINUM	45.00		SUTTER METALS	TACOMA, WA	RECYCLE	
Non-ferrous metals	ALUMINUM	2.00	Pacific Iron And Metal		SEATTLE, WA	RECYCLE	
Non-ferrous metals	BRASS	27.00		SUTTER METALS	TACOMA, WA	RECYCLE	
Non-ferrous metals	BRASS	7.60	Seattle Iron And Metals Corporation		SEATTLE, WA	RECYCLE	
Non-ferrous metals	BRASS	2.50		CALBAG	TACOMA, WA	RECYCLE	
Non-ferrous metals	BRASS	1.80		METRO METALS	TACOMA, WA	RECYCLE	
Non-ferrous metals	BRASS	1.10	Pacific Iron And Metal		SEATTLE, WA	RECYCLE	
Non-ferrous metals	STAINLESS STEEL	93.00	Seattle Iron And Metals Corporation		SEATTLE, WA	RECYCLE	

Material Type

Aluminum cans

Appliances (white goods)

Asphalt (from paving)

Asphalt roofing shingles

Brick

Carpet and carpet padding

Chemicals, solvents, paints

Clean NOT painted or treated
dimensional wood waste (includes
pallets and crates)

Concrete

Container glass

Corrugated cardboard (OCC)

Electronics or computers

Fats, oils, and grease

Ferrous metals

Fiberglass insulation

Fluorescent and mixed bulbs

Material Type
Food and/or food scraps
Gypsum wall board
HDPE plastics (#2)
High grade paper
Household batteries
Household items
LDPE plastics (#4)
Mattresses
Mixed glass
Mixed paper
Newspaper
Non-ferrous metals
Other aggregates such as rock and gravel
Other construction and demolition debris
Other recyclable plastics/rigid plastics
Other recycled materials
Painted and/or treated wood waste
PET plastics (#1)
Plastic film
Rigid (foam) insulation
Soil and dirt

Material Type
Stumps, brush, limbs (non-residential)
Textiles
Tin cans
Tires
Used petroleum oil
Vehicle batteries
Yard debris (grass, leaves, pruning, weeds)

Material Definitions 2021

Definition
Aluminum beverage cans.
Appliances, hot water heaters, microwave ovens, including appliances for sale or reuse.
Asphalt paving material.
Asphalt roofing shingles.
Fired clay bricks.
General category of flooring applications and non-rag stock textiles consisting of various natural or synthetic fibers bonded to some type of backing material. Also includes carpet padding.
Oil-based house paint and primers, stains, deck and concrete sealers, and clear finishes (e.g., shellac and varnish). Medical Wastes: Pharmaceuticals and Medications: Both prescription and over-the-counter medications in all forms, both brand name and generic, including pills, liquid medications, creams, and ointments that residents use in their homes or other residential settings. Other chemicals or pesticides and herbicides, gasoline, kerosene, motor oil and diesel oil, asbestos, and explosives. Spill cleanup of flammable liquids (gasoline and diesel). Solvent-based adhesives and glues, including epoxy, rubber cement, two-part glues and sealers, and auto body fillers. Includes water-based glues, caulking compounds, grouts, and Spackle. Includes caustic cleaners whose primary purpose is to clean surfaces, unclog drains, or perform other actions. Absorbents, Spent Sorbents, Spent Paint, Covid cleaning supplies. Cleaning Solution. Spill cleanup of flammable liquids (gasoline and diesel). Nicotine that is expired/unsellable that is going for recycling.
Pallets, scrap lumber, wood toys, fencing, crates. Specify final use when known: Reuse lumber or pallets, recycling, composting, paper pulp, burned for energy recovery, etc. Note that painted and treated wood is listed separately.
Portland cement mixtures, set or unset.
Food, beverage, and other glass containers; excluding refillable bottles.
Brown uncoated cardboard boxes with a wavy core and uncontaminated (no plastic liners or wax coating), brown paper bags, kraft paper.
Small electronic items, including computers, printers, and all related parts, including refurbished electronics for resale or reuse.
Fatty byproducts of food preparation, including cooking oil, butter, lard, and gravy. Can be in liquid or solid form.
Magnetic metal items, such as steel clothes hangers, sheet metal products, pipes, some automobile repair parts, and other miscellaneous, magnetic metal scraps.
Fiberglass building and mechanical insulation - typically batts.
Fluorescent light tubes and compact fluorescent lights, which are small, fluorescent bulbs similar in appearance to incandescent bulbs. These bulbs typically have a spiral or tubular design. Any light-emitting diode (LED) light bulb or lighting fixture. They usually are not coiled in appearance and have an integrated ballast in the base.

Definition
Food wastes, food scraps, spoiled food, donated food. Can include compostable paper.
Calcium sulfate dehydrate sandwiched between heavy layers of Kraft-type paper.
High-density polyethylene—clear and colored containers made from HDPE; coded (#2).
Computer paper, white bond, Xerox, or notebook paper. Some colored paper.
Ni-cad, flashlight, button batteries.
Mixed-material furniture such as upholstered chairs. Furniture that is made purely of one material, such as plastic or metal, would be categorized according to that material (e.g., plastic products or other ferrous metal). Small electric appliances such as toasters, microwave ovens, power tools, and curling irons. Sporting Balls, Silverware, and kitchen utensils Sporting Equip (soft). Sporting equipment.
Low-density polyethylene—includes mustard and some other squeezable containers; coded (#4). Excludes plastic bags and wrap.
Box springs, wood or steel frame material and fabric from mattresses.
Mirrors, glassware, glass windowpanes, doors and tabletops, safety glass, architectural glass, and windshield and side window auto glass. Broken glass of any color that can be readily distinguished and separated from other materials.
Envelopes, telephone books, paperback books, cereal boxes, laundry soap boxes, all magazines, and other recyclable paper not included in other categories
Black and white newspaper, shredded newsprint, and including other paper normally distributed inside a newspaper such as colored advertisements, comics, flyers, tabloids.
Copper tubing, brass fixtures, insulated wire, small auto repair parts such as generators, water pumps. Aluminum other than beverage cans.
Other aggregates such as rocks and gravel.
Use ONLY for materials that are not specifically listed in other categories that are a result of a construction or demolition activities. "Other construction and demolition debris" may include toilets, sinks, ceiling tiles, non-asphalt roofing waste and combination materials.
Recyclable plastics or plastics products for reuse not included in other plastic categories e.g., toys, PVC pipes, reusable plastic containers, etc. This excludes PET, HDPE, LDPE plastics listed in other categories.
Use ONLY for materials that are not specifically listed in other categories. Materials may include but are not limited to antifreeze, oil filters, rubber materials, milk cartons/drink boxes, "Tetra" or aseptic packaging, photographic films, as well as furniture and other household goods sold for reuse.
Dimensional wood waste that is either painted or treated.
Polyethylene terephthalate—clear and colored beverage containers, coded (#1).
Plastic film, including plastics bags, pallet wrap, building and boat wrap.
Rigid foam insulation.
Includes topsoil and dirt. No contaminated soil or dirt.

Definition

Stumps, brush, and limbs chipped for mulch, burned for energy recovery, etc.

Clothing and apparel, shop rags, blankets for reuse or recycling.

Coated steel cans, usually food containers.

Automobile, truck, and bicycle tires. Specify final use on "Material Destination."

Motor oil. Specify final use in "Material Destination."

Automobile, truck, boat, motorcycle batteries; excludes industrial batteries.

Grass clippings, leaves, tree branches and pruning, and weeds destined for centralized composting.

Facility Identification Information

Facility Name :	The Recycling Depot - Corson
Street Address :	6004 Corson Ave S
City, State, Zip :	Seattle, WA, 98108

Contact Name:	Catherine Adams
Title :	Office Manager
Telephone :	(206) 325-7288
Fax :	(206) 325-0883
Email :	catherine@islandrecycling.com
Mailing Address :	6004 CORSON AVE S
City, State, Zip :	SEATTLE, WA, 98108

Did your facility operate at any point during the reporting year?

Yes

When did you stop operations?

Do you plan to restart?

No

During the reporting year, were there any changes in your management practices that impacted your operations?

No

Are there any new solid waste activities planned at your site?

No

Incoming Materials (materials collected)

Source County	Material	Description	Units	Residential Qty	Commercial Qty	Total
King - Seattle	Aluminum Cans		Tons	0.00	32.00	32.00
King - Seattle	Electronics - Computers		Tons	0.00	8.00	8.00
King - Seattle	Ferrous Metals		Tons	0.00	7465.00	7465.00
King - Seattle	Non-ferrous Metals	COPP	Tons	0.00	71.00	71.00
King - Seattle	Non-ferrous Metals	INSULATED WIRE	Tons	0.00	82.00	82.00
King - Seattle	Non-ferrous Metals	BIKES	Tons	0.00	0.90	0.90
King - Seattle	Non-ferrous Metals	ALUMINUM	Tons	0.00	573.00	573.00
King - Seattle	Non-ferrous Metals	BRASS	Tons	0.00	40.00	40.00
King - Seattle	Stainless Steel	STEEL	Tons	0.00	98.00	98.00
King - Seattle	Batteries - Auto Lead Acid	BATTERIES	Tons	0.00	50.00	50.00
King - Seattle	Non-ferrous Metals	ELECTRICAL MOTORS	Tons	0.00	77.00	77.00
King - Seattle	Other	IRONY METALS	Tons	0.00	143.00	143.00
King - Seattle	Other	CATALYTIC CONVERTORS	Tons	0.00	0.22	0.22
King - Seattle	Other	LEAD	Tons	0.00	10.00	10.00
King - Seattle	Other	BALLAST	Tons	0.00	27.00	27.00
King - Seattle	Other	SEALED UNITS	Tons	0.00	20.00	20.00
King - Seattle	Non-ferrous Metals	ALUMINUM	Tons	0.00	2.11	2.11

Material Destination and Final Use (disposition)

Material	Quantity	Unit	Disposition	Destination Facility	City	County	State	Country
Aluminum Cans	3.00	Tons	Recycled	Pacific Iron & Metal - (Seattle WA 98134)	SEATTLE	King - Seattle	WA	US
Aluminum Cans	29.00	Tons	Recycled	Seattle Iron & Metals Corporation - (Seattle WA 98108)	SEATTLE	King - Seattle	WA	US
Electronics - Computers	2.40	Tons	Recycled	Calbag Metals - (Tacoma WA 98422)	TACOMA	Pierce	WA	US
Electronics - Computers	5.60	Tons	Recycled	Metro Metals Northwest Inc. - Tacoma - (Tacoma WA 98421)	TACOMA	Pierce	WA	US
Ferrous Metals	1062.00	Tons	Recycled	DAIDO	GARDEN A	Out of State	CA	US
Ferrous Metals	372.00	Tons	Recycled	DJJ	DANIEL ISLAND	Out of State	SC	US
Ferrous Metals	245.00	Tons	Recycled	MC3 RESOURCES		Unknown	SC	Taiwan
Ferrous Metals	3433.00	Tons	Recycled	Nucor Steel Seattle Inc. - (Seattle WA 98106)	SEATTLE	King - Seattle	WA	US
Ferrous Metals	2353.00	Tons	Recycled	Seattle Iron & Metals Corporation - (Seattle WA 98108)	SEATTLE	King - Seattle	WA	US
Non-ferrous Metals	9.00	Tons	Recycled	Calbag Metals - (Tacoma WA 98422)	TACOMA	Pierce	WA	US
Non-ferrous Metals	2.00	Tons	Recycled	Metro Metals Northwest Inc. - Tacoma - (Tacoma WA 98421)	TACOMA	Pierce	WA	US
Non-ferrous Metals	7.00	Tons	Recycled	Pacific Iron & Metal - (Seattle WA 98134)	SEATTLE	King - Seattle	WA	US
Non-ferrous Metals	53.00	Tons	Recycled	Sutter Metals Recycling - (Centralia WA 98531)	TACOMA	Pierce	WA	US

Annual Report - Recycling Facility

Facility ID : 3309
Report Year : 2021

Non-ferrous Metals	11.60	Tons	Recycled	Calbag Metals - (Tacoma WA 98422)	TACOMA	Pierce	WA	US
Non-ferrous Metals	0.40	Tons	Recycled	Metro Metals Northwest Inc. - Tacoma - (Tacoma WA 98421)	TACOMA	Pierce	WA	US
Non-ferrous Metals	56.00	Tons	Recycled	SUTTER	TACOMA	Pierce	WA	US
Non-ferrous Metals	0.01	Tons	Recycled	AARON'S BIKES	SEATTLE	King - Seattle	WA	US
Non-ferrous Metals	0.08	Tons	Recycled	Second Use Building Materials - (Seattle WA 98134)	SEATTLE	King - Seattle	WA	US
Non-ferrous Metals	14.00	Tons	Recycled	Pacific Iron & Metal - (Seattle WA 98134)	SEATTLE	King - Seattle	WA	US
Non-ferrous Metals	526.00	Tons	Recycled	Seattle Iron & Metals Corporation - (Seattle WA 98108)	SEATTLE	King - Seattle	WA	US
Non-ferrous Metals	45.00	Tons	Recycled	Sutter Metals Recycling - (Centralia WA 98531)	TACOMA	Pierce	WA	US
Non-ferrous Metals	27.00	Tons	Recycled	Sutter Metals Recycling - (Centralia WA 98531)	TACOMA	Pierce	WA	US
Non-ferrous Metals	2.00	Tons	Recycled	Pacific Iron & Metal - (Seattle WA 98134)	SEATTLE	King - Seattle	WA	US
Non-ferrous Metals	7.60	Tons	Recycled	Seattle Iron & Metals Corporation - (Seattle WA 98108)	SEATTLE	King - Seattle	WA	US
Non-ferrous Metals	2.50	Tons	Recycled	Calbag Metals - (Tacoma WA 98422)	TACOMA	Pierce	WA	US
Non-ferrous Metals	1.80	Tons	Recycled	Metro Metals Northwest Inc. - Tacoma - (Tacoma WA 98421)	TACOMA	Pierce	WA	US
Non-ferrous Metals	1.10	Tons	Recycled	Pacific Iron & Metal - (Seattle WA 98134)	SEATTLE	King - Seattle	WA	US

Annual Report - Recycling Facility

 Facility ID : 3309
 Report Year : 2021

Non-ferrous Metals	93.00	Tons	Recycled	Seattle Iron & Metals Corporation - (Seattle WA 98108)	SEATTLE	King - Seattle	WA	US
Non-ferrous Metals	1.80	Tons	Recycled	Pacific Iron & Metal - (Seattle WA 98134)	SEATTLE	King - Seattle	WA	US
Non-ferrous Metals	1.80	Tons	Recycled	Calbag Metals - (Tacoma WA 98422)	TACOMA	Pierce	WA	US
Non-ferrous Metals	1.40	Tons	Recycled	Metro Metals Northwest Inc. - (Vancouver WA 98660)	TACOMA	Pierce	WA	US
Non-ferrous Metals	50.00	Tons	Recycled	Battery Systems of Seattle - (Seattle WA 98108)	RENTON	King	WA	US
Non-ferrous Metals	28.00	Tons	Recycled	Sutter Metals Recycling - (Centralia WA 98531)	TACOMA	Pierce	WA	US
Non-ferrous Metals	23.00	Tons	Recycled	WA METALS & DEVELOPMENT	KNET	King	WA	US
Non-ferrous Metals	18.40	Tons	Recycled	Seattle Iron & Metals Corporation - (Seattle WA 98108)	SEATTLE	King - Seattle	WA	US
Non-ferrous Metals	7.60	Tons	Recycled	Calbag Metals - (Tacoma WA 98422)	TACOMA	Pierce	WA	US
Non-ferrous Metals	141.00	Tons	Recycled	Seattle Iron & Metals Corporation - (Seattle WA 98108)	SEATTLE	King - Seattle	WA	US
Non-ferrous Metals	2.00	Tons	Recycled	Calbag Metals - (Tacoma WA 98422)	TACOMA	Pierce	WA	US
Non-ferrous Metals	4.10	Tons	Recycled	Sutter Metals Recycling - (Centralia WA 98531)	TACOMA	Pierce	WA	US
Non-ferrous Metals	2.30	Tons	Recycled	Calbag Metals - (Tacoma WA 98422)	TACOMA	Pierce	WA	US
Non-ferrous Metals	2.50	Tons	Recycled	Pacific Iron & Metal - (Seattle WA 98134)	SEATTLE	King - Seattle	WA	US

Non-ferrous Metals	1.10	Tons	Recycled	Metro Metals Northwest Inc. - Tacoma - (Tacoma WA 98421)	TACOMA	Pierce	WA	US
Non-ferrous Metals	23.00	Tons	Recycled	Metro Metals Northwest Inc. - Tacoma - (Tacoma WA 98421)	TACOMA	Pierce	WA	US
Non-ferrous Metals	2.11	Tons	Recycled	Metro Metals Northwest Inc. - Tacoma - (Tacoma WA 98421)	TACOMA	Pierce	WA	US
Non-ferrous Metals	0.22	Tons	Recycled	M&H TECHNOLOGIES	AUMSVILLE	Out of State	OR	US
Non-ferrous Metals	4.00	Tons	Recycled	RAB WEALTH	DALLAS	Out of State	TX	US
Non-ferrous Metals	20.00	Tons	Recycled	RAB WEALTH	DALLAS	Out of State	TX	US

Submission Information

Report Prepared By :

Name/Title :	CATHERINE ADAMS - OFFICE MANAGER
Telephone :	(206) 325-7288
Email :	CATHERINE@ISLANDRECYCLING.COM

Preparer Comments :

Submission Details :

Submitted By :	CATHERINE
Submitted On :	Feb-23-2022

**APPENDIX D
SIGNAGE AND FLYER**

PLAN OF OPERATIONS
The Recycling Depot
6004 Corson Avenue South
Seattle, Washington

Farallon PN: 2325-001

The Recycling Depot

Items and Materials **NOT ACCEPTED**

Toxic or Hazardous Substances

Petroleum Products or Vessels Containing Oils or Grease

Lead Acid Batteries from LQGs or MQGs (only accepted from households and small quantity generators)

Refrigerants (including CFC's, HFC's and HCFC's) in refrigerators and air conditioners.

Asbestos or Asbestos Containing Materials

Items that contain **PCB's**, including capacitors, florescent light ballasts, transformers, electrical components

Paint Cans or Pesticide Containers

Lights that include florescent, neon, high-intensity mercury vapor lights

Compressors, Capacitors, and Mercury Switches from appliances

Explosives, Weapons, and Ammunition

Radioactive Materials

Non-Metal materials, including garbage, tires or rubber coated items, wood, dirt, yard debris, concrete, asphalt, and glass

APPENDIX E
FACILITY INSPECTION FORMS

PLAN OF OPERATIONS
The Recycling Depot
6004 Corson Avenue South
Seattle, Washington

Farallon PN: 2325-001

Weekly Facility Inspection Form
The Recycling Depot
Seattle, Washington
Farallon PN: 2325-001
Page 1 of 4

Visually inspect all areas of Facility. Note any deficiencies, including or related to:

Drums and Containers	Equipment	Pile Staging	General Site Conditions
<ul style="list-style-type: none"> • Signs of leaks • Shell distortion • Corrosion • Liquid in secondary containment (if present) • Water present • Unlabeled containers • Located in designated area • Other conditions that should be addressed for continued safe operation that may affect the site spill prevention • Secondary containment systems clean and accessible 	<ul style="list-style-type: none"> • Signs of leaks • Integrity of structural supports • Physical damage • Other conditions that should be addressed for continued safe operation that may affect the site spill prevention plan 	<ul style="list-style-type: none"> • Signs of spills • Observation of unauthorized waste product • Security/lighting • Pathways are clear and entry gates/doors are operable • Pile is equal to or below 20 feet high and 35 feet by 50 feet wide • Other conditions that should be addressed for continued safe operation that may affect the site spill prevention plan 	<ul style="list-style-type: none"> • Warning and/or informational signs are legible • Facility is free of litter and debris • Site controls are adequate

Inspector Signature:

Date:

**Weekly Spill Kit Inspection Form
The Recycling Depot
Seattle, Washington
Farallon 2325-001**

Page 3 of 4

Spill Kit Location	1 Pair Safety Glasses/ Gloves	Heavy Plastic Bags	Absorbent Pads and Booms	Granular Absorbent	1 Empty Drum	Comments
Check Boxes for Items Present in Spill Kit						

Additional Comments by Inspector:

NOTES:
Any items missing from spill kits should be replaced as soon as possible.

