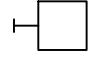
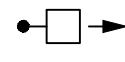


ELECTRICAL LEGEND	
SYMBOL	DESCRIPTION
LIGHTING	
	WALL MOUNT LED LIGHT FIXTURE
	POLE LIGHT FIXTURE (ARROW INDICATES DIRECTION OF AIMING FOR OPTICS)

LIGHTING FIXTURE SCHEDULE					
SYMBOL	DESCRIPTION	LAMPS	VOLTS		MOUNTING & REMARKS
			WATTS		
AL1	LITHONIA DSX1-P6-40K-BLC-XX	LED 15609 LUMENS 40K	XXXV 163W		27' POLE MOUNTED LIGHT FIXTURE WITH 3' CONCRETE BASE. LIGHT DISTRIBUTION TYPE - BACK LIGHT CONTROL
AL2A	LITHONIA DSX1-P6-40K-RCCO-XX	LED 11614 LUMENS 40K	XXXV 163W		27' POLE MOUNTED LIGHT FIXTURE WITH 3' CONCRETE BASE. LIGHT DISTRIBUTION TYPE - RIGHT CORNER CUTOFF
AL2B	LITHONIA DSX1-P6-40K-LCCO-XX	LED 11614 LUMENS 40K	XXXV 163W		27' POLE MOUNTED LIGHT FIXTURE WITH 3' CONCRETE BASE. LIGHT DISTRIBUTION TYPE - LEFT CORNER CUTOFF
AL3	LITHONIA DSX1-P6-40K-T3M-XX	LED 19049 LUMENS 40K	XXXV 163W		27' POLE MOUNTED LIGHT FIXTURE WITH 3' CONCRETE BASE. LIGHT DISTRIBUTION TYPE - TYPE 3
AL4	LITHONIA DSX1-P6-40K-T4M-XX	LED 18635 LUMENS 40K	XXXV 163W		27' POLE MOUNTED LIGHT FIXTURE WITH 3' CONCRETE BASE. LIGHT DISTRIBUTION TYPE - TYPE 4
AL5	LITHONIA DSX1-P6-40K-T5M-XX	LED 19766 LUMENS 40K	XXXV 163W		27' POLE MOUNTED LIGHT FIXTURE WITH 3' CONCRETE BASE. LIGHT DISTRIBUTION TYPE - TYPE 5
WL1	LITHONIA DSX2-20C-350-40K-T4M-XX	LED 2959 LUMENS 40K	XXXV 25W		WALL MOUNTED LIGHT FIXTURE AT +11' AFG. LIGHT DISTRIBUTION TYPE - TYPE 4
WL2	LITHONIA DSX1-P6-40K-T4M-XX-WBA	LED 18635 LUMENS 40K	XXXV 163W		WALL MOUNTED LIGHT FIXTURE AT +30' AFG. LIGHT DISTRIBUTION TYPE - TYPE 4



REUSE OF DOCUMENTS
 THE DRAWINGS AND SPECIFICATIONS CONTAINED
 HEREIN ARE THE PROPRIETARY, UNPUBLISHED
 PROPERTY OF BCE ENGINEERS, INC. AND SHALL
 NOT BE REPRODUCED, COPIED, OR DISCLOSED IN
 WHOLE OR PART WITHOUT THE WRITTEN
 PERMISSION OF BCE ENGINEERS, INC.

**PACIFIC RACEWAYS
 BUSINESS PARK**
 31001 144TH AVE. SE STREET
 KENT, WA 98042

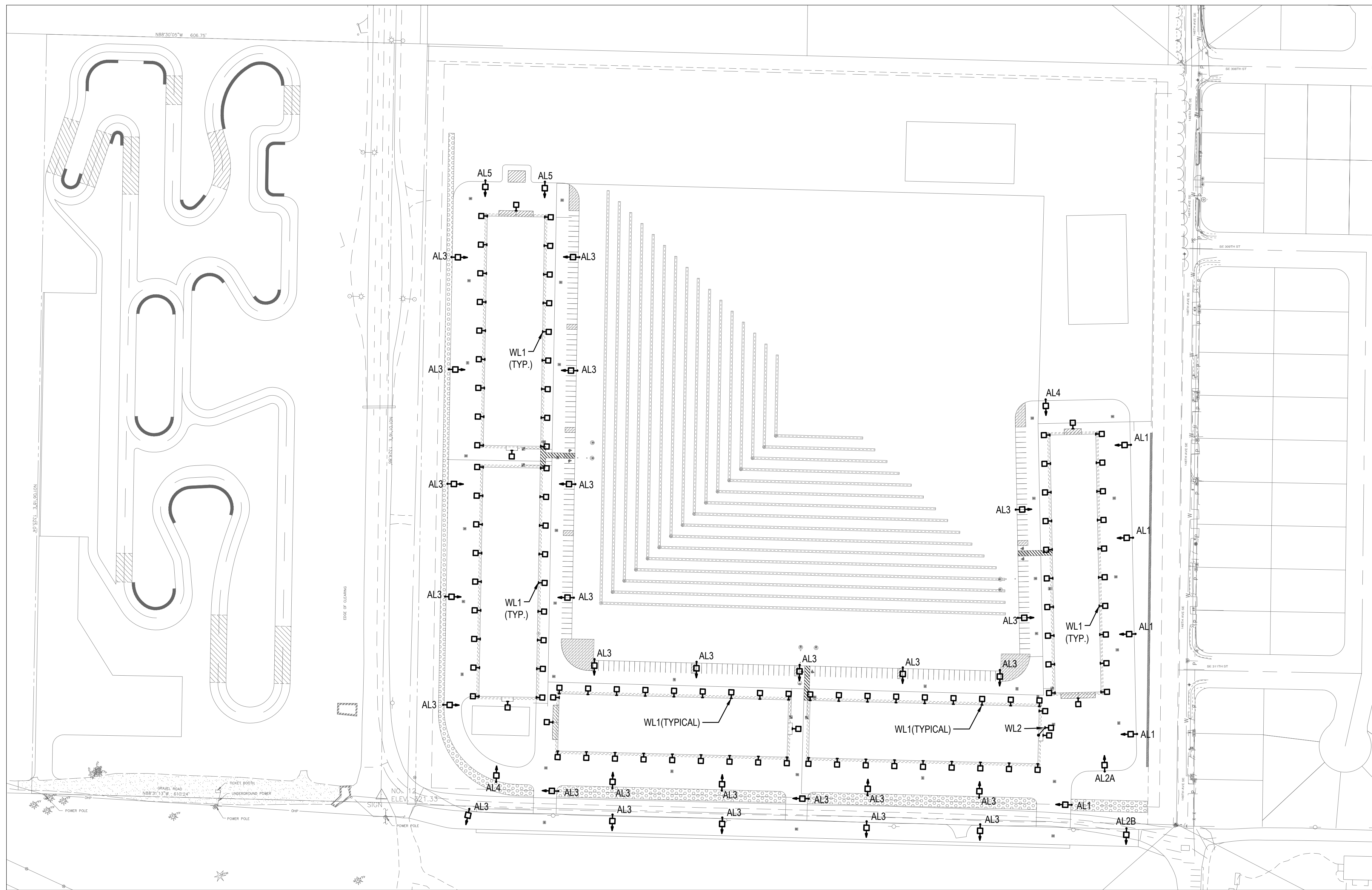
ELECTRICAL LEGEND

REVISIONS		
NO.	DESCRIPTION	DATE

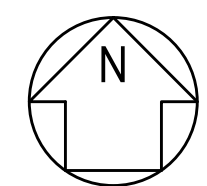
DRAWN BY: K.K.
 CHECKED BY: C.H.
 PROJECT MANAGER:

DRAWING No. of TOTAL

E0.01



1 ELECTRICAL SITE PLAN
SCALE: 1" = 100'



REUSE OF DOCUMENTS
THE DRAWINGS AND SPECIFICATIONS CONTAINED
HEREIN ARE THE PROPRIETARY, UNPUBLISHED
PROPERTY OF BCE ENGINEERS, INC. AND SHALL
NOT BE REPRODUCED, COPIED, OR DISCLOSED IN
WHOLE OR PART WITHOUT THE WRITTEN
PERMISSION OF BCE ENGINEERS, INC.

PACIFIC RACEWAYS
BUSINESS PARK
31001 144TH AVE. SE STREET
KENT, WA 98042

ELECTRICAL SITE PLAN

NO.	DESCRIPTION	DATE

DRAWN BY: K.K.

CHECKED BY: C.H.

PROJECT MANAGER:

DRAWING No. of TOTAL

E1.01

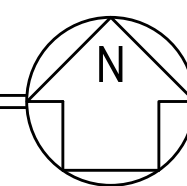
DATE: 10-03-2018
SUBMITTAL:
KING COUNTY REVIEW - NOT FOR CONSTRUCTION
PROJECT No. 218-305.00



DXF file created by LitePro 2.029 on 10/3/2018 10:20:10 AM

CALCULATION SUMMARY					
AREA NAME	AVE	MAX	MIN	MAX/MIN	AVE/MIN
ACCESS ROAD	1.36	3.79	0.39	9.80	3.51

1 SITE PLAN (POINT TO POINT LIGHTING CALC.) - PARKING AND ACCESS ROAD
SCALE: 1" = 100'



10/03/2018

REUSE OF DOCUMENTS
THE DRAWINGS AND SPECIFICATIONS CONTAINED
HEREIN ARE THE PROPRIETARY, UNPUBLISHED
PROPERTY OF BCE ENGINEERS, INC. AND SHALL
NOT BE REPRODUCED, COPIED, OR DISCLOSED IN
WHOLE OR PART WITHOUT THE WRITTEN
PERMISSION OF BCE ENGINEERS, INC.

PACIFIC RACEWAYS
BUSINESS PARK
31001 144TH AVE. SE STREET
KENT, WA 98042

SITE PLAN
(POINT TO POINT LIGHTING CALC.)
PARKING AND ACCESS ROAD

REVISIONS		
NO.	DESCRIPTION	DATE

DRAWN BY: K.K.

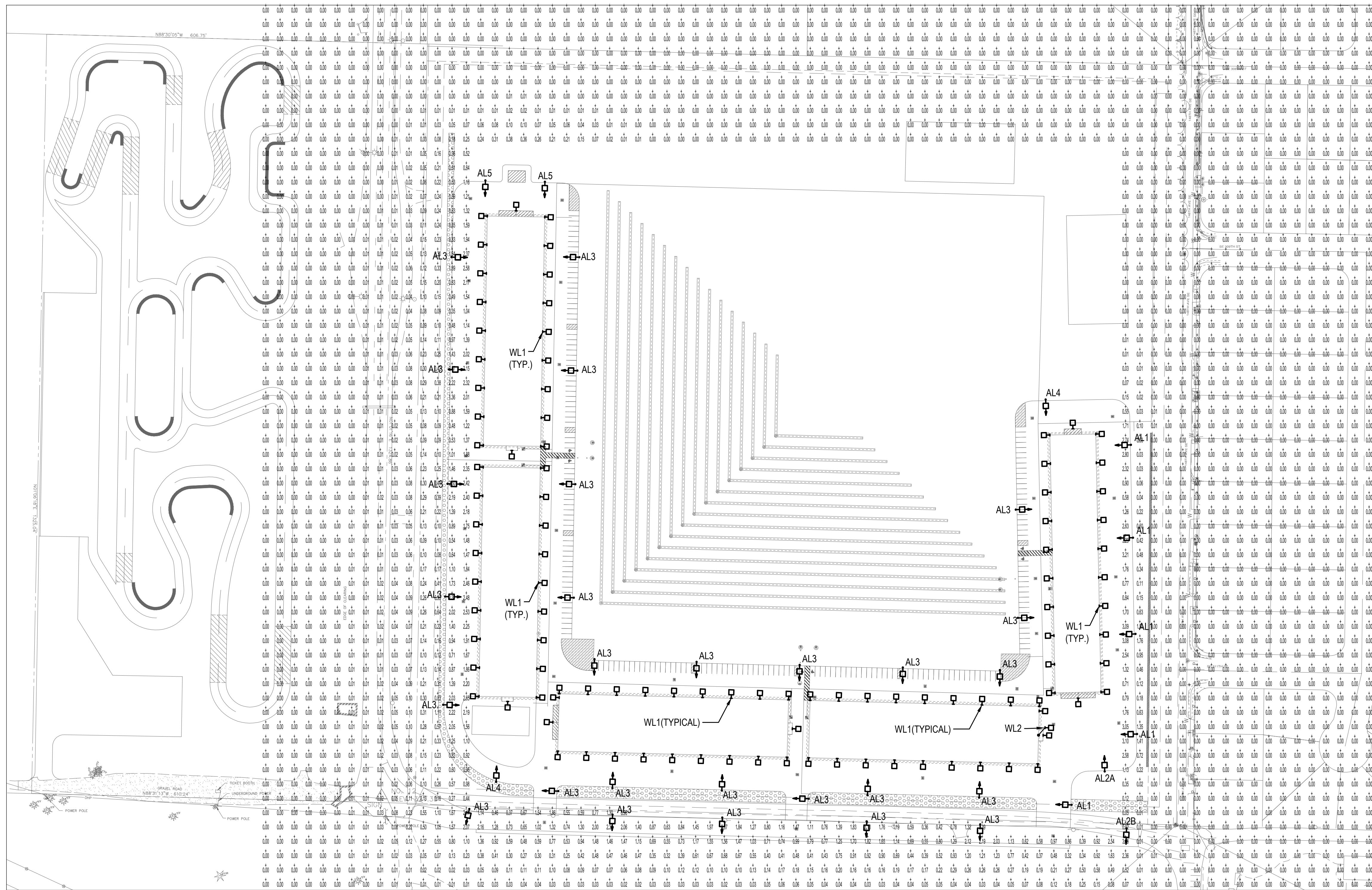
CHECKED BY: C.H.

PROJECT MANAGER:

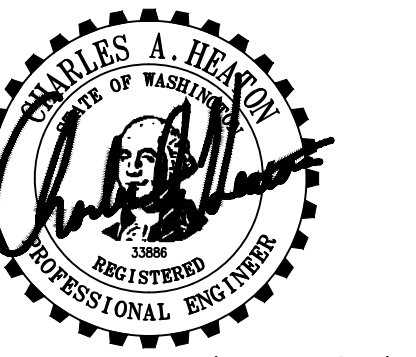
DRAWING No. of TOTAL

E1.11

DATE: 10-03-2018
SUBMITTAL:
KING COUNTY REVIEW - NOT FOR CONSTRUCTION
PROJECT No. 218-305-00



1 SITE PLAN (POINT TO POINT LIGHTING CALC.) - NEIGHBOR BOUNDARY
 SCALE: 1" = 100'



REUSE OF DOCUMENTS
 THE DRAWINGS AND SPECIFICATIONS CONTAINED
 HEREIN ARE THE PROPRIETARY, UNPUBLISHED
 PROPERTY OF BCE ENGINEERS, INC. AND SHALL
 NOT BE REPRODUCED, COPIED, OR DISCLOSED IN
 WHOLE OR PART WITHOUT THE WRITTEN
 PERMISSION OF BCE ENGINEERS, INC.

PACIFIC RACEWAYS
 BUSINESS PARK
 31001 144TH AVE. SE STREET
 KENT, WA 98042

SITE PLAN
 (POINT TO POINT LIGHTING CALC.)
 NEIGHBOR BOUNDARY

REVISIONS		
NO.	DESCRIPTION	DATE

DRAWN BY: K.K.
 CHECKED BY: C.H.
 PROJECT MANAGER:

DRAWING No. of TOTAL

E1.12

DATE: 10-03-2018
 SUBMITTAL:
 KING COUNTY REVIEW - NOT FOR CONSTRUCTION
 PROJECT No. 218-305.00