

# SL-B1060 Spar Buoy

Regulatory and Channel/Navigation Markers



Nelco Marine

Exhibit 21

www.nelcomarine.com  
t: (250) 354 9011



- Made from heavy duty one piece, UV-stabilized polyethylene
- Self-righting
- Foam filled with closed-cell polyurethane
- Concrete counterweight for upright performance
- Anchor point recessed in base

Sealite's SL-B1060 Buoy is rotationally-molded in one piece using UV-stabilized polyethylene making them almost indestructible. The buoy is completely foam filled for added strength and buoyancy.

An internal concrete counterweight gives the buoy a lower center of gravity, so the buoy is able to stand more upright on station.

The USCG approved optional, retroreflective bands provide unmatched night time visibility on the regulatory style. The SL-B1060 buoy can be fitted with an SL-15 or SL-60 solar marine lantern for added visibility at night or in foul weather.

Vinyl wraps and decal restoration kits are also available to repurpose existing regulatory style buoys (see back).



**Above:** SL-B1060 is available in green can and red nun styles for channel marking configurations (shown in region B colors). Nun shown with optional solar marine lantern and retroreflective tape.



**Above:** Integrated stainless steel mooring eye and recessed anchor point allow buoys to stand upright when stored



## Features

- Molded from strong, durable UV-stabilized polyethylene
- Recessed anchor point for upright and convenient storage
- Easy mounting of solar marine lanterns
- Regulatory signage available

## Cost Effective

- Withstand heavy UV exposure - no peeling or fading

## Flexible Configurations

- Channel markers - red or green
- Regulatory buoy - white with orange stripes

## Optional

- Mold-in graphics
- Mooring equipment & chains
- Vinyl decal restoration kits and wraps to refurbish or repurpose existing buoys

## Applications

- Navigation channels, harbor approaches and port entrances
- Regulatory marking of hazards, mooring fields, cautionary zones

## Certifications

- Meets U.S federal, state and local regulations

## Reliable

- Excellent buoyancy & stability

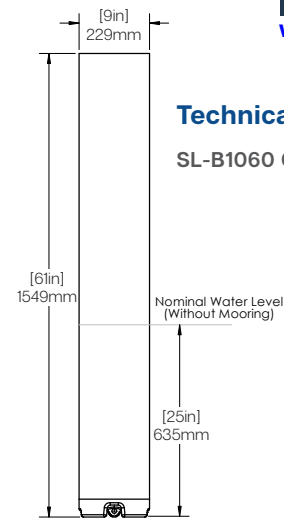
## Technical Specifications\*



www.nelcomarine.com  
t: (250) 354 9011

SL-B1060 Buoy	
<b>General Characteristics</b>	
Available Colors	Red, Green, White, Yellow, Orange
Nominal Freeboard (in/mm)	36 (914)
Nominal Draft (in/mm)	25 (635)
Maximum Mooring Load (lb/kg)	12 (5)
Submergence (lb/in, kg/cm)	3 (0.5)
<b>Physical Characteristics</b>	
Material	Rotationally-molded UV-stabilized virgin polyethylene with 316-grade stainless steel mooring eye
Wall Thickness (in/mm)	0.2 (5)
Filling	Closed-cell polyurethane foam
Height (in/mm)	61 (1549)
Net Weight (lb/kg)	63 (29)
Product Life Expectancy	12+ years
<b>Certifications</b>	
Quality Assurance	ISO9001:2015
<b>Intellectual Property</b>	
Trademarks	SEALITE® is a registered trademark of Sealite Pty Ltd
Warranty	1 year
Lantern Options	Sealite SL-15 or SL-60*
Options Available	<ul style="list-style-type: none"> <li>• Custom signage</li> <li>• Vinyl wraps</li> <li>• Reflective band</li> </ul>

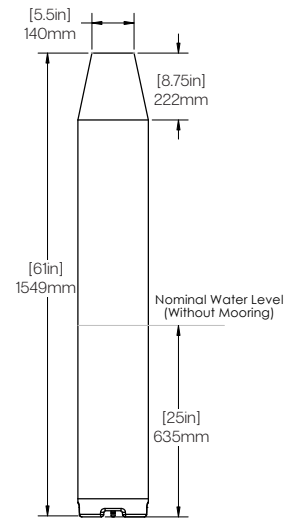
\*\*The SL-B1060 Nun buoy requires a mounting plate (SL-MC-10) for the SL-60 Lantern.



### Technical Illustration

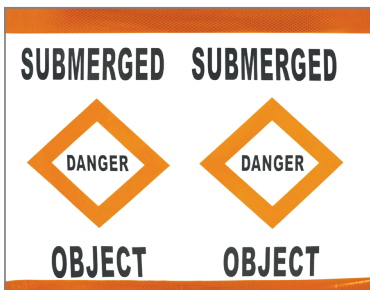
SL-B1060 Can Buoy Dimensions

### SL-B1060 Nun Buoy Dimensions

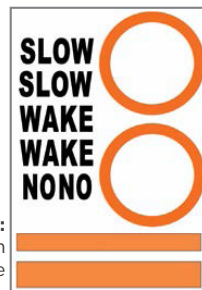


## Regulatory Wraps & Restoration Kits

	Vinyl Wrap Kit (Part No.: SL-BWRAP1060)	Decal Restoration Kit
<b>Material</b>	Two USCG approved retroreflective orange bands, regulatory black messages, and orange symbols on heavy-duty white vinyl material	Two each: retroreflective orange bands, regulatory black messages, and orange symbols
<b>Options</b>	Custom graphics or logo Silver retroreflective band	Custom graphics or logo Silver retroreflective band

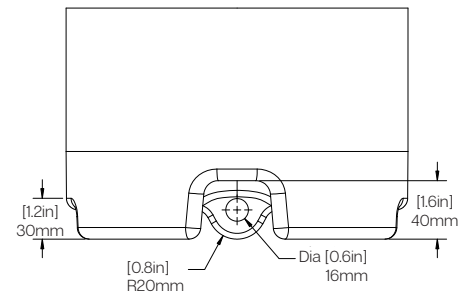


Left:  
Vinyl Wrap Kit  
example



Right:  
Decal Restoration  
Kit example

### SL-B1060 Bottom Eye Dimensions



† Subject to standard terms and conditions.  
\* Specifications subject to change or variation without notice.

We believe technology improves navigation™

SL-B1060\_DATA\_EN\_V1-0



www.nelcomarine.com

t: (250) 354 9011



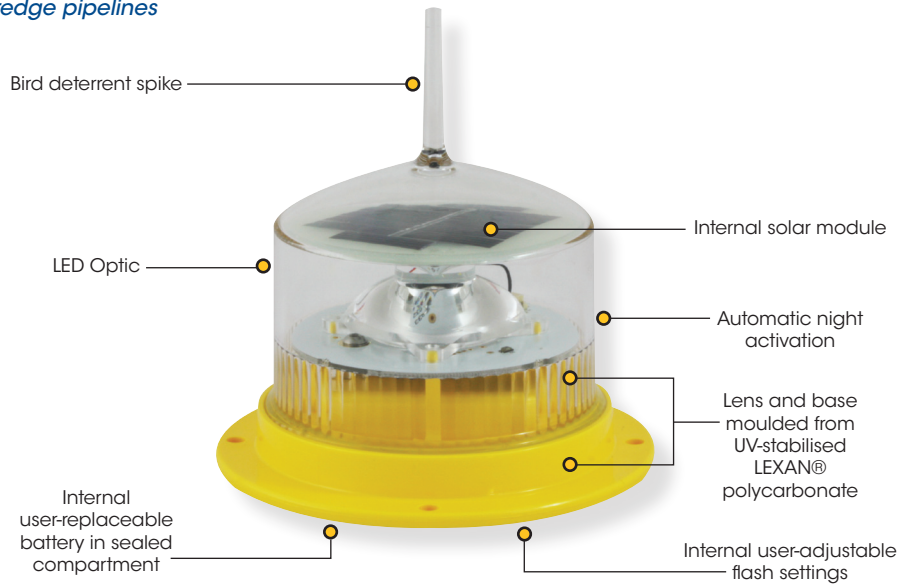
# 1-2NM+ Solar Marine Lantern

SL-15



Exclusive Distributor

The equipment complies with requirements of the U.S Coast Guard in 33 CFR part 66 for private aid to navigation and 33 CFR part 88.15 for lights on dredge pipelines



## The Sealite Advantage

- User-adjustable flash characters
- User-replaceable battery in sealed battery compartment
- NiMH battery for long service life & wide temperature range
- Completely sealed & self-contained using advanced UV-sealing
- Installs in minutes & operates maintenance-free for up to five years
- IP68 waterproof

The Sealite SL-15 1-2NM+ compact LED light is exceptional value and incorporates some of the most advanced technology available. In the tradition of Sealite lanterns, the SL-15 is designed to be maintenance-free and have a service life of over 5 years.

The SL-15 can be installed in minutes and requires no operator intervention. The SL-15 has a rotary switch to allow users to change the flash character of the light without the need for special tools or programmers.

During daylight hours the solar module will charge the battery, and the lantern will automatically begin operation at dusk - once the ambient light threshold drops sufficiently.

The SL-15 features Sealite's Single LED Optic which boasts exceptional power to light output efficiency. The tough outer polycarbonate lens incorporates an environment-friendly spike - deterring unwelcome bird life.

The internally housed battery is user-replaceable after years of reliable service.

The unit is sealed using advanced UV-sealing, enabling a rugged and complete waterproof seal capable of prolonged and deep immersion (IP68).

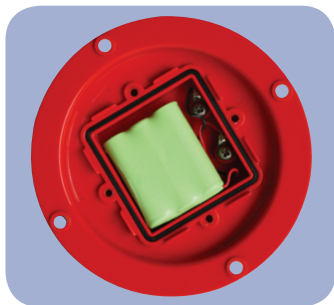
### Optional ON/OFF Switch

The SL-15 is also available with an optional ON/OFF switch for temporary installations such as worksites. Please note the printed circuit board also has an ON/OFF switch as standard. This is used for switching off lanterns placed in storage.

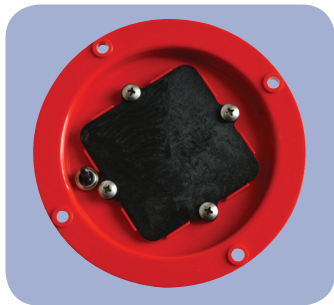


# 1-2NM+ Solar Marine Lantern

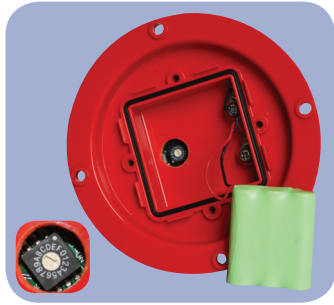
## SL-15



User-replaceable battery



SL-15 with optional ON/OFF switch

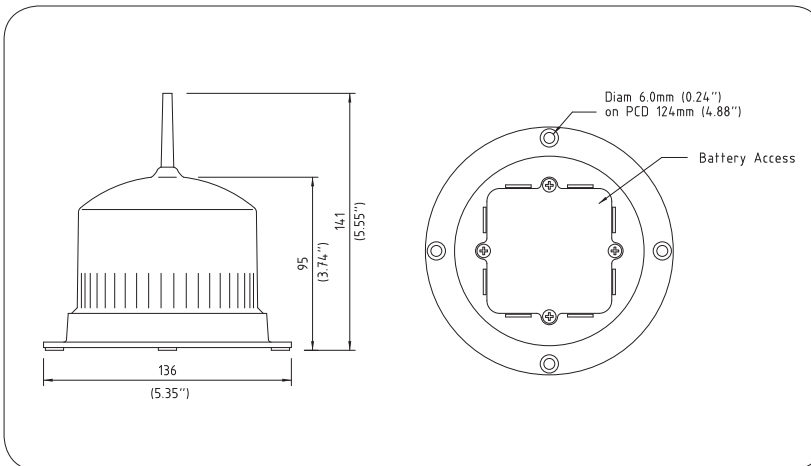


Flash characteristic is selected via internal rotary switch located in the battery compartment

### User-Adjustable IALA Flash Characteristics

FLASH SETTING CODE	Flash Sequence (on, off, on...)
0	STEADY LIGHT (intensity reduced)
1	0.5, 1.0
2	0.5, 3.5
3	1.0, 3.0
4	0.5, 5.5
5	0.3, 0.7
6	0.3, 0.7, 0.3, 0.7, 0.3, 0.7, 0.3, 15.7
7	0.3, 1.7
8	0.3, 2.2
9	0.5, 2.0
A	0.3, 2.7
B	0.5, 2.5
C	0.7, 2.3
D	0.5, 4.5
E	1.0, 4.0
F	Custom Setting

Other flash patterns are available on request



### SPECIFICATIONS \* \*

#### Light Characteristics

Light Source  
Available Colours  
Typical Maximum Intensity (cd) †  
Visible Range (NM)

Horizontal Output (degrees)  
Vertical Divergence (degrees)  
Reflector Type  
Available Flash Characteristics

Intensity Adjustments

LED Life Expectancy (hours)

#### Electrical Characteristics

Current Draw (mA)  
Circuit Protection  
Nominal Voltage (V)  
Autonomy (days)  
Temperature Range

#### Solar Characteristics

Solar Module Type  
Output (watts)

#### Power Supply

Battery Type  
Battery Capacity (Ah)  
Nominal Voltage (V)

#### Physical Characteristics

Body Material  
Lens Material  
Lens Diameter (mm/inches)  
Lens Design  
Mounting  
Height (mm/inches)  
Width (mm/inches)  
Mass (kg/lbs)  
Product Life Expectancy

#### Certifications

CE  
IALA  
Quality Assurance  
Waterproof

#### Intellectual Property

Patents  
Trademarks  
SEALITE® is a registered trademark of Sealite Pty Ltd

#### Warranty \*

#### Options Available

### SL-15

LED  
Red, Green, White, Yellow, Blue  
Red - 6.2 Green - 7.6 White - 6.8 Yellow - 5.9

AT @ 0.74: 1-2+  
AT @ 0.85: 1.1-2.3+

360  
7  
Single LED Optic  
16 user-adjustable IALA flash characteristics (other flash patterns available on request)  
32 automatic step-down settings based on power demand of flash code selection  
>100,000

Refer to Sealite Power Calculator  
Integrated  
3.6  
>50 (14 hour darkness, 12.5% duty cycle)  
-40 to 80°C

Multicrystalline  
0.45

High grade NiMH  
2.4  
3.6

LEXAN® Polycarbonate - UV-stabilised  
LEXAN® Polycarbonate - UV-stabilised  
98 / 3 7/8  
Single LED Optic  
4 x 6mm mounting holes  
141 / 5 1/2  
136 / 5 3/8  
0.5 / 1 1/8  
Up to 12 years ^

EN61000-6-1:2007, EN61000-6-3:2007  
Signal colours compliant to IALA E-200-1  
ISO 9001:2015  
IP68

US Pat. No. 6,667,582, AU Pat. No. 778,918  
SEALITE® is a registered trademark of Sealite Pty Ltd

3 years  
• ON/OFF switch  
• Custom flash patterns  
• 50mm pole mount adapter plate  
• IR Remote Programmer



\* Specifications subject to change or variation without notice  
\* Subject to standard terms and conditions  
† Intensity setting subject to solar availability  
^ Refer to the Sealite website under the warranty section



Sealite USA LLC  
t: +1 (603) 737 1311  
info@sealiteusa.com  
sealite.com

nelcomarine@gmail.com  
Ph: 250.354.9011

