

December
2015 | |

Health & Human Services Transformation Update



- [Accountable Communities of Health](#)
- [Physical/Behavioral Health Integration](#)
- [Best Starts for Kids](#)
- [Communities of Opportunity](#)
- [Equity & Social Justice](#)
- [Coverage is Here King County](#)
- [Mental Illness and Drug Dependency Sales Tax Renewal](#)



Health and Human Services Transformation: A New Milestone Reached

The past year has brought together new partnerships and momentum to achieve the [vision](#) of the King County Health and Human Services Transformation Plan.

Importantly, the [King County Accountable Community of Health](#) (ACH) reached a new milestone on their journey to achieve healthy communities. On November 19, 2015 the King County ACH attained official designation status from the Washington State Health Care Authority. Read more about the King County ACH below and find out how several initiatives such as [Communities of Opportunity](#), [Familiar Faces](#), Physical and Behavioral Health Integration and others are driving change in King County.

[VISIT OUR WEBSITE](#)

KING COUNTY ACCOUNTABLE COMMUNITY OF HEALTH RECEIVES OFFICIAL DESIGNATION

The King County Accountable Community of Health (ACH) is one of nine emerging ACHs that together cover the entire state. ACHs are a component of Healthier Washington, a statewide plan that aims to transform the health system to achieve better health and better care at lower costs. ACHs are designed to bring together different sectors that have a common interest in improving health and support partners to carry out priority initiatives and reduce health disparities. ACH designation means that the region has a multi-sector governance structure in place, strong

backbone support to perform administrative functions, and initial health improvement priority areas based on an assessment of regional needs.

Advancing aligned efforts: The ACH in King County operates in a region with a long history of multi-sector collaboration and intends to build on, accelerate, and better align health improvement initiatives already underway in the region.

These include efforts to integrate physical and behavioral health services, redesign service models for people with complex needs, advance housing and health partnerships, and champion local prevention-focused initiatives to build healthier places. The current ACH structure includes an Interim Leadership Council and a set of work groups. In the months ahead, the ACH will continue to work with the partners at the state to further refine its governance structure, advance data sharing and explore opportunities to partner in Medicaid transformation efforts.



King County ACH Interim Leadership Council Meeting
Image credit: Ned Ahrens, King County

Want to know more?

- [Healthier Washington](#) has posted a [Frequently Asked Questions](#). It provides basic information about ACHs, what they could mean to you or your organization, and how to become involved.
- A monthly ACH conference call will be hosted by the Healthier Washington Community Transformation Team to share updates and answer questions. The first call took place on December 17. Check [Healthier Washington's ACH website](#) for details on the next call.

You'll find more information on the recently updated King County ACH [website](#).

Medicaid Transformation Waiver

The Washington State Health Care Authority (HCA) and Department of Social and Health Services (DSHS) are currently negotiating a five-year Medicaid Transformation Waiver with the federal Centers for Medicare and Medicaid Services (CMS). The waiver, if approved, would provide flexibility and resources to help transform the care delivery system for Medicaid clients across the state. In King County, over 419,000 residents are currently enrolled in Medicaid.

Healthier Washington recently announced an opportunity for interested parties to submit transformation project ideas for potential inclusion in the waiver. A December 8, 2015 webinar explained the intent, process, and important parameters. The deadline for submitting ideas to the Health Care Authority is January 15, 2016. You'll find more information and the template for submitting project ideas [here](#).

PHYSICAL/BEHAVIORAL HEALTH INTEGRATION DESIGN COMMITTEE LAUNCHED

The Physical and Behavioral Health Integration Design Committee is charged with developing a

model of fully integrated physical and behavioral health for both children and adults in the King County region by 2020. [The committee](#) held its first meeting on November 5, 2015 and is part of the King County Accountable Community of Health (ACH).

Behavioral Health Organization Detailed Plan

To set the stage for the integration of physical and behavioral health services, King County government has been working on integrating mental health and substance use disorder services.

King County Department of Community & Human Services submitted a plan at the end of October to the state to become the Behavioral Health Organization (BHO) for King County. A Behavioral Health Advisory Board will begin meeting in April, 2016. [Learn more.](#)

BEST STARTS FOR KIDS: A VICTORY FOR CHILDREN, YOUTH AND FAMILIES

King County voters approved Best Starts for Kids, an initiative to improve the health and well-being of our region by investing in prevention and early intervention for children, youth, families, and communities.

Executive Constantine recently appointed 35 community members to the advisory board that will help implement the initiative. The board includes content experts, researchers, educators, community leaders and nonprofit organizations from across King County. [Read more about the advisory board.](#)



COMMUNITIES OF OPPORTUNITY

Second round of policy/systems awards to be announced early 2016

Community-engaged or -led efforts were recently invited to submit proposals to transform systems and policies in the intersections between health, housing, and/or economic opportunity that will decrease and/or prevent continued inequity in low-income communities and communities of color in King County. Fifty-four proposals were received. Awards (totaling at least \$500,000) will be announced in the first quarter of 2016. This is the second round of [Communities of Opportunity](#) (COO) funding to support promising existing systems and policy change efforts with a catalytic one-time investment.

Community input welcome for Best Starts for Kids' COO investments

Ten percent of proceeds from [Best Starts for Kids](#) are designated to support healthy and safe communities through Communities of Opportunity. COO's Interim Governance Group is developing guidelines and an implementation plan for these funds - your thoughts and input are welcome. Please contact [Kirsten Wyses](#) or [Cheryl Markham](#).

Living Cities implementation funds granted

In October, Communities of Opportunity was awarded a \$250,000 implementation grant advancing

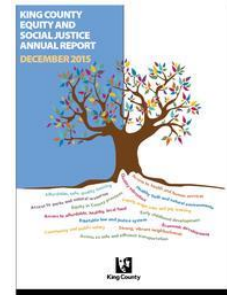
King County to the implementation phase of Living Cities' [The Integration Initiative \(TII\)](#). King County and [The Seattle Foundation](#) will use the funds to continue joint coordination of Communities of Opportunity. Learn more about the [Living Cities partnership](#).

EQUITY AND SOCIAL JUSTICE

2015 Equity and Social Justice Annual Report

The 2015 [report](#) provides information on how King County is making progress toward creating a more equitable community through:

- Increasing access to affordable health care
- Reducing the bus fare for low-income riders
- Addressing disproportionality in the juvenile justice system
- Investing in Best Starts for Kids
- Establishing baselines and measure for determinants of equity
- Building a more diverse and inclusive workforce



Update on King County's first Equity & Social Justice Strategic Plan

King County government has been engaging with partners from community, business, labor, philanthropic and public sectors to co-create an [Equity and Social Justice \(ESJ\) Strategic Plan](#). The County concluded the initial phases of employee and community engagement efforts. Priority setting and strategy development is now underway. A "rough" draft of the ESJ Strategic Plan will be shared broadly with communities, for additional review and feedback.

COVERAGE IS HERE KING COUNTY

Taxi drivers, restaurant workers - and epidemiologists

Important work continues in order to enroll the uninsured population of King County into newly available health insurance. County Executive Dow Constantine has directed Public Health to make enrollment a high priority. And King County had tremendous success in the first two years of enrollment - [reducing the percent of working age adults who are uninsured from 16% to 10%](#). Large reductions were experienced by all age groups, across all income levels, and among all racial groups.

The Assessment Unit within Public Health has analyzed enrollment patterns and data from the US Census Bureau to identify where disparities still exist and to find zip codes where there are likely larger numbers of people who remain uninsured. The Access & Outreach team, working with partner agencies, is using the data to direct extra outreach in these zip codes.

In addition to targeting those zip codes, outreach this year focuses on other communities that have disproportionate numbers of uninsured people:

- Hispanic and Vietnamese small businesses, such as nail salons and restaurants;
- taxi drivers at major taxi companies, who will receive text messages along with direct contact from a Navigator.

This year, King County and its partners are again hosting [enrollment events in libraries, shopping malls and other public places](#). The outreach also focuses on people who need to renew their insurance, because many could get a better deal by changing plans.

MENTAL ILLNESS AND DRUG DEPENDENCY SALES TAX RENEWAL PLANNING

King County's Mental Illness and Drug Dependency (MIDD) is a countywide sales tax generating approximately \$53 million per year for mental health and substance abuse services and programs. Unless renewed by the Metropolitan King County Council (Council), the MIDD will expire on December 31, 2016.

In order to inform its decision about whether to renew the sales tax, the Council has asked for a retrospective review of strategies from the original MIDD (MIDD I) by June 2016 and a service improvement plan for potential renewed MIDD (MIDD II) by Sept. 2016. To shape the development of the required service improvement plan for a renewed MIDD, a [policy and services framework](#) has been developed.

Engaging community

King County is sharing information about this process and gathering input from internal and external partners and communities:

- To-date, MIDD and Best Starts for Kids staff have held five regional Community Conversations (Renton, Bellevue, Shoreline, and two in Seattle) with a total of more than 200 participants.
- Held two focus groups with eight more planned for January. Focus groups are designed to seek input from specific populations like consumers, or from sub regional areas of King County.
- County staff meets with cities, organizations, individuals across the county to update and provide status reports on MIDD and to received feedback and input.

Collaboration with other local initiatives

King County staff are developing and modifying potential MIDD II programs and service options within the context of complementary efforts such as [Best Starts for Kids](#), the [Youth Action Plan](#), the [HHS Transformation Plan](#), [Familiar Faces Initiative](#), [Behavioral Health Integration](#), the [Veterans and Human Services Levy](#), the [Juvenile Justice Disproportionality Steering Committee](#), and the [Strategic Plan](#).

Questions or comments please visit the [MIDD review and renewal website](#) or email [Kelli Carroll](#).