

Overview of King County Housing Resources

Mark Ellerbrook,
King County

King County Funds and Income Limits

HUD 2017 Household Income Limits

| | 1 Person | 2 People | 4 People |
|---|-----------|-----------|-----------|
| 30% Area Median Income | | | |
| Household Income | \$20,200 | \$23,050 | \$28,800 |
| Corresponding Monthly Rent Limit | \$505 | \$576 | \$720 |
| 50% Area Median Income | | | |
| Household Income | \$33,600 | \$38,400 | \$48,000 |
| Corresponding Monthly Rent Limit | \$840 | \$960 | \$1,200 |
| 80% Area Median Income | | | |
| Household Income | \$53,760 | \$61,440 | \$76,800 |
| Corresponding Rent Limit | \$1,344 | \$1,536 | \$1,920 |
| Estimated Corresponding Purchase Price | \$261,300 | \$298,600 | \$373,300 |
| 125% Area Median Income | | | |
| Household Income | \$84,000 | \$96,000 | \$120,000 |
| Corresponding Rent Limit | \$2,100 | \$2,400 | \$3,000 |
| Estimated Corresponding Purchase Price | \$408,300 | \$466,600 | \$583,300 |

Fund Sources

Federal Funds (\$2.7M)

- HOME & CDBG
 - General Low Income (80% AMI)
 - DCHS Focuses on Extremely Low Income / Homeless
 - 15% Must Go to Community Housing Dev. Organization

Document Recording Fees (\$2.3M)

- \leq 50% AMI
- A Portion in Seattle
- Highest Need and/or Chronic Homeless

Fund Sources

VSHSL (\$2.8M)

- Equal Split Between Veterans, Seniors and Vulnerable Populations
- Extremely Low Income (Generally < 30% AMI)

Special Sources

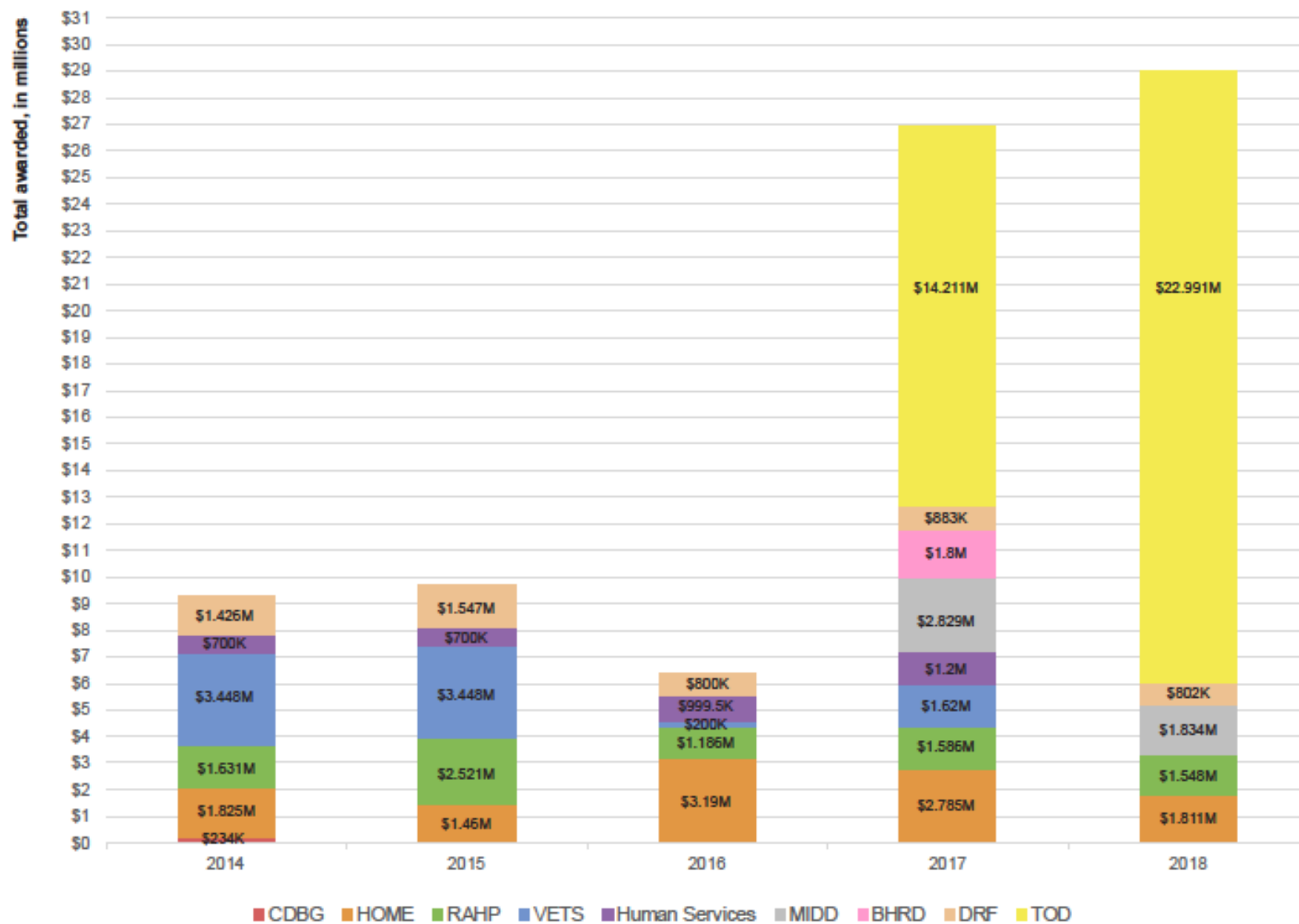
- Mental Illness and Drug Dependency Sales Tax (\$2.8M)
- Developmental Disabilities (\$1.5M)
- Behavioral Health and Recovery Division (\$1.8M)

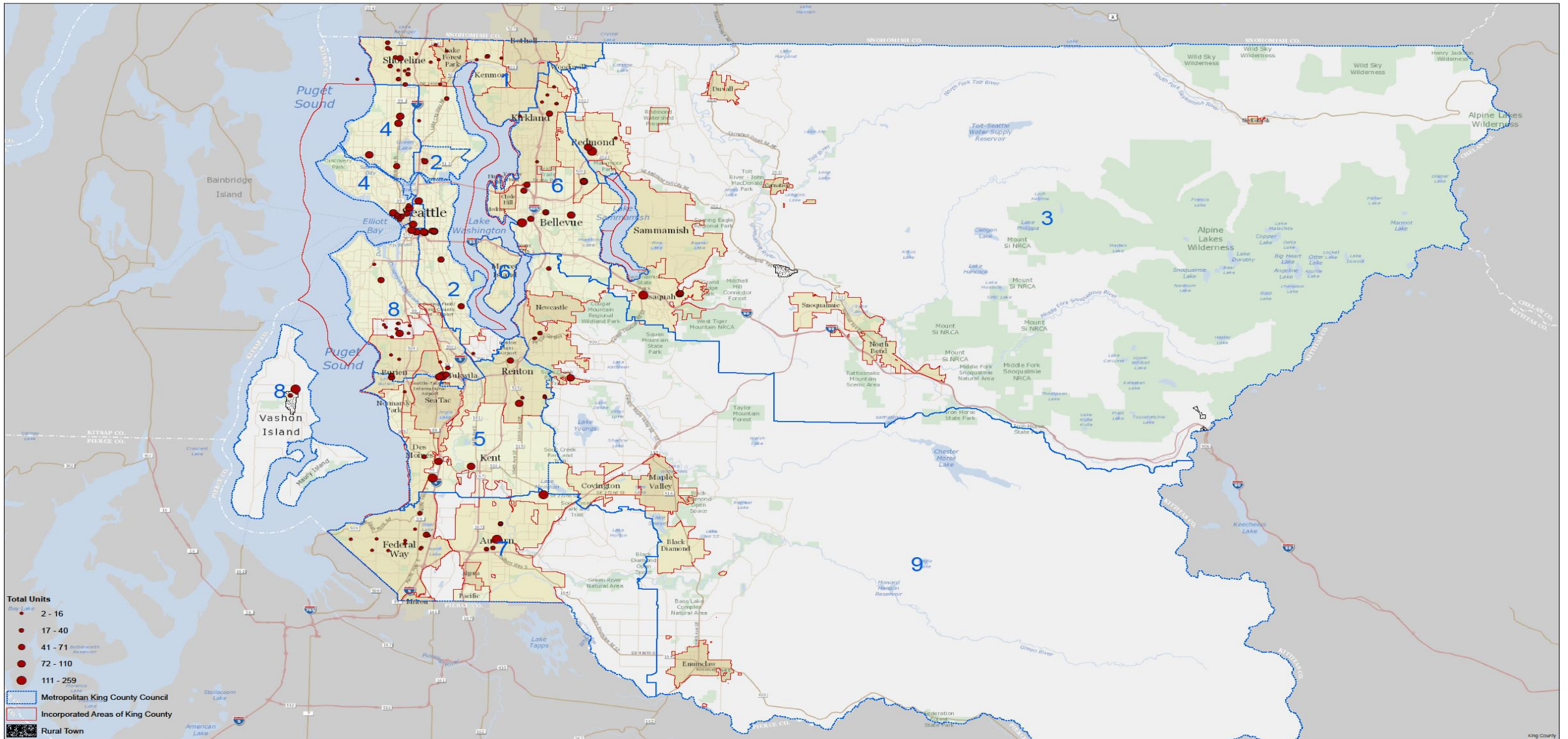
Fund Sources

TOD

- Bond Against 50% Hotel/Motel Tax
- 30% AMI to 80% AMI
- Creates \$87 Million
 - Countywide Pool - \$33 Million
 - Subregional Pools
- To Date Awarded \$38 Million
- Additional \$8 Million Starting in 2021

Sources of Regional Affordable Housing Funding, 2014-2018

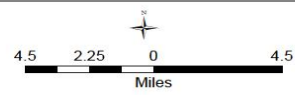




- Total Units**
- 2 - 16
 - 17 - 40
 - 41 - 71
 - 72 - 110
 - 111 - 259
- Metropolitan King County Council
 - Incorporated Areas of King County
 - Rural Town

King County GIS CENTER

The information included on this map has been compiled by King County staff from a variety of sources and is subject to change without notice. King County makes no representations or warranties, express or implied, as to accuracy, completeness, timeliness, or rights to the use of such information. This document is not intended for use as a survey product. King County shall not be liable for any general, special, indirect, incidental, or consequential damages including, but not limited to, lost revenues or lost profits resulting from the use or misuse of the information contained on this map. Any sale of this map of information on this map is prohibited except by written permission of King County.
 Data Source: DCHS



Date: 2/13/2018

Housing Finance Funded Properties

Total Units 2009 - 2017