

KING COUNTY **HOUSING AFFORDABILITY** AND **HOUSING COST BURDEN**

A measure of affordability is the percentage of income families or individuals spend on housing. For low and moderate income households **30% is considered a reasonable cost for housing.**

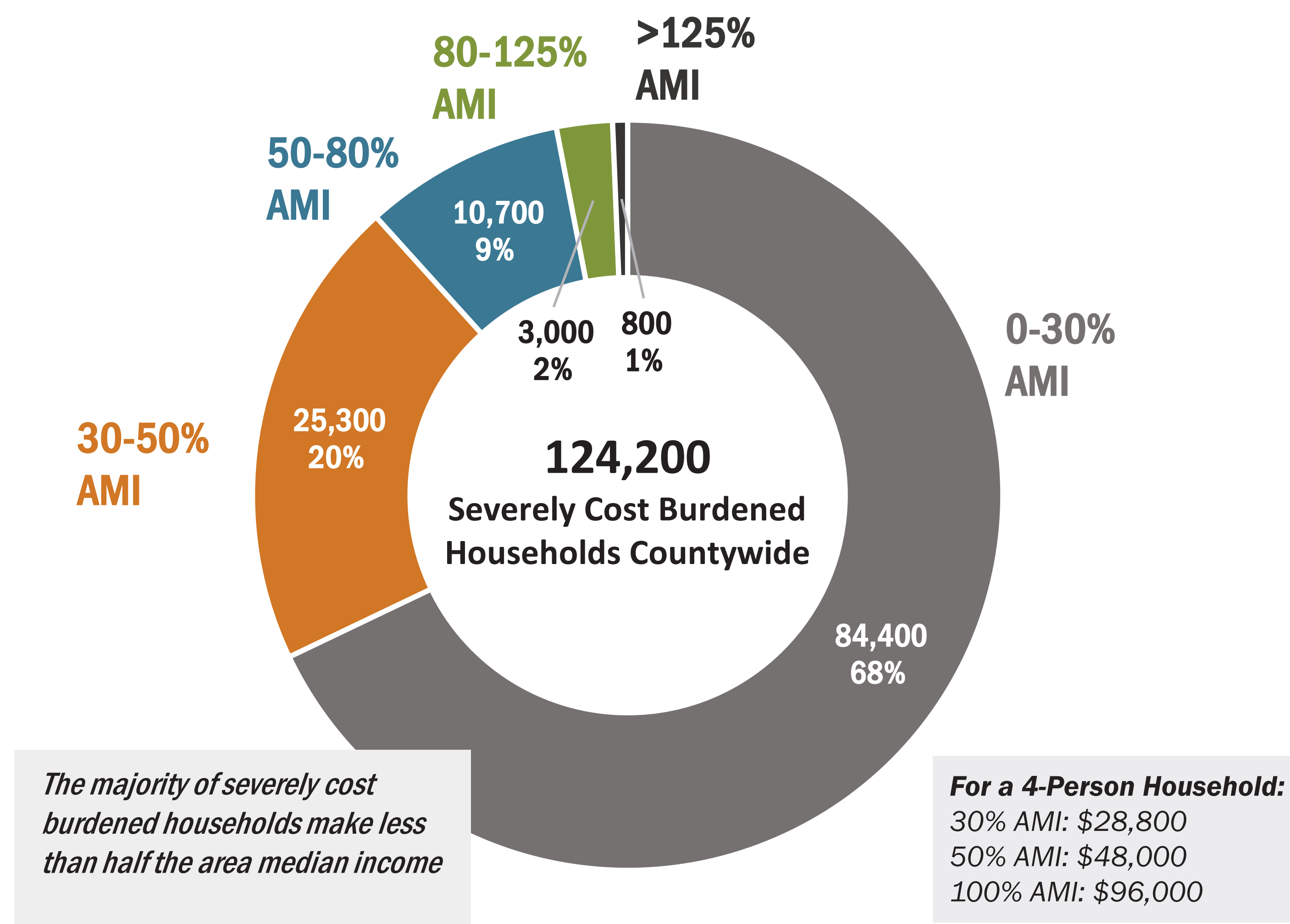
COST BURDEN: Families and individuals who spend more than 30% of their income on housing are considered cost burdened.

SEVERE COST BURDEN: Families and individuals who spend more than 50% of their income on housing are considered severely cost burdened.

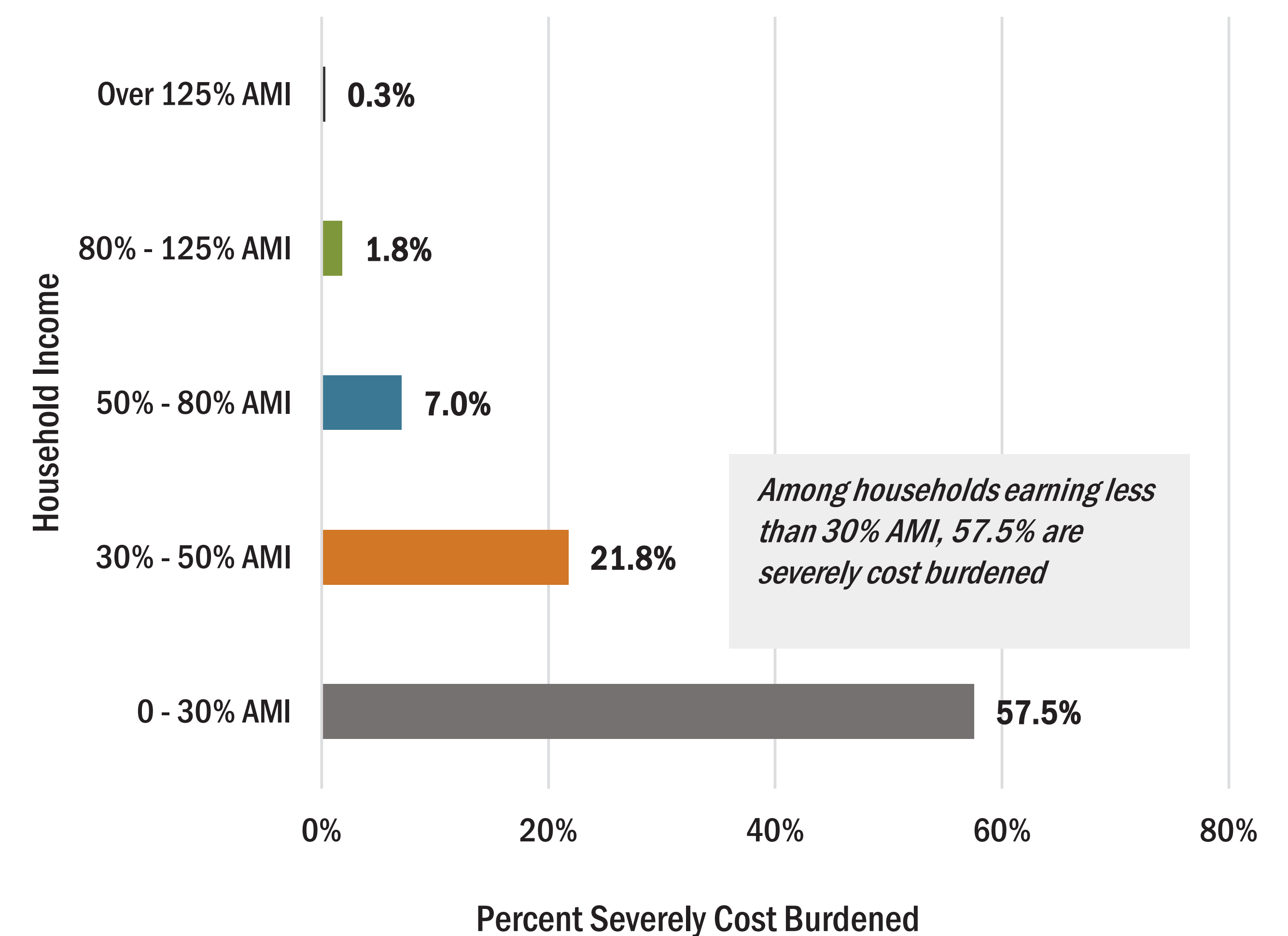
SEVERE COST BURDEN: INCOME

More than 100,000 low-income households are severely cost burdened.

Severe Cost Burden by Area Median Income (AMI)



Severe Cost Burden Within Income Levels

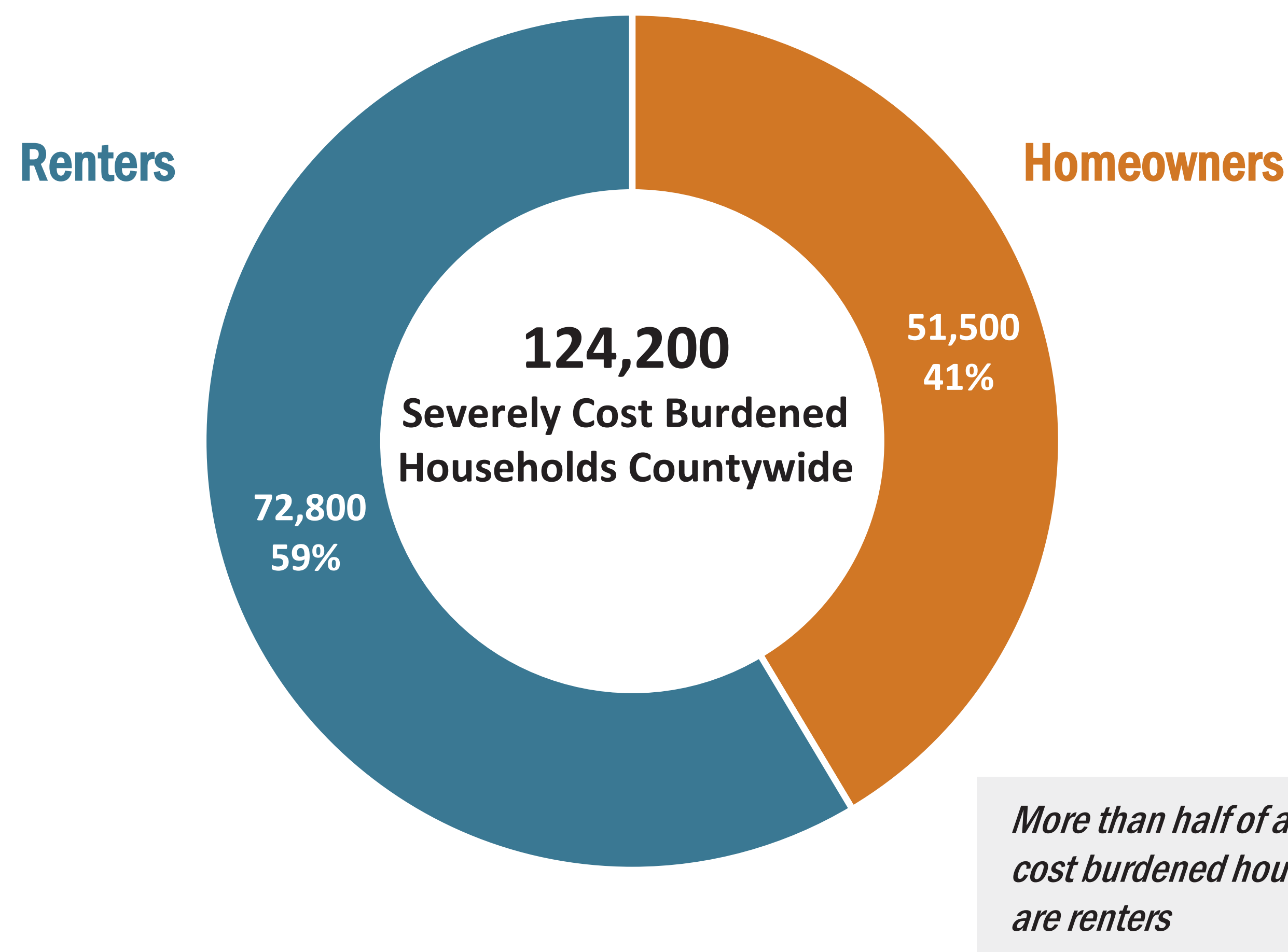


Data Sources: 2011-2015 ACS 5-year Public Use Microdata Samples (PUMS)

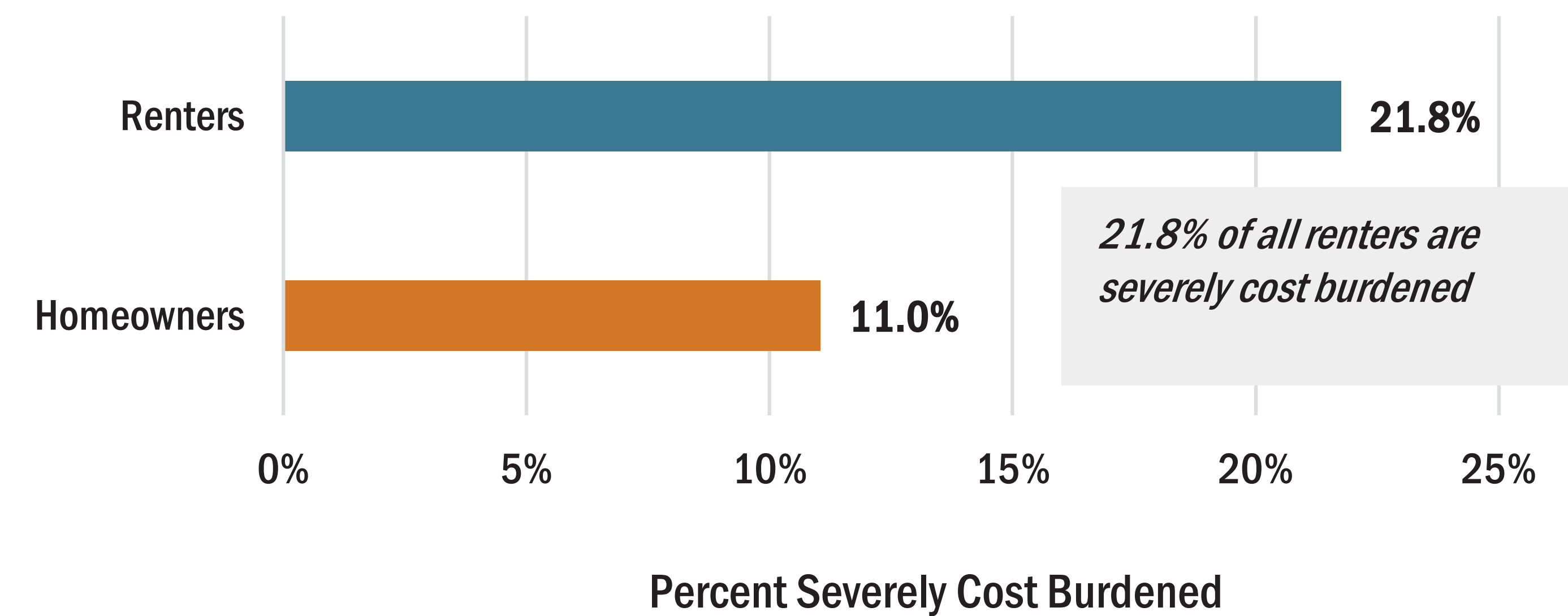
SEVERE COST BURDEN: RENTERS AND HOMEOWNERS

Renters are twice as likely to be severely cost burdened compared to homeowners.
Over 70,000 renters are severely cost burdened.

Severely Cost Burdened Renters and Homeowners



% of Renters and Homeowners that are Severely Cost Burdened

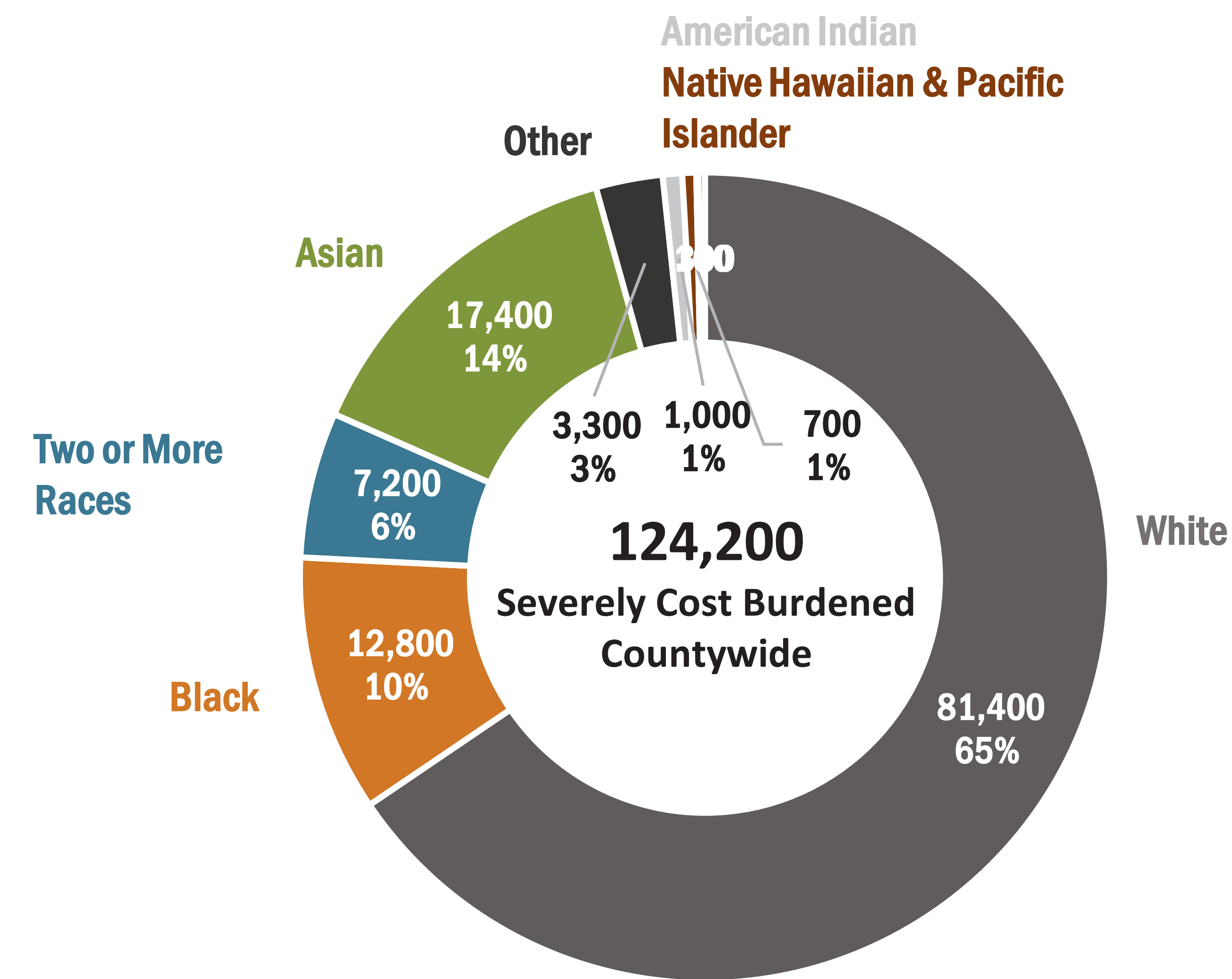


Data Sources: 2011-2015 ACS 5-year Public Use Microdata Samples (PUMS)

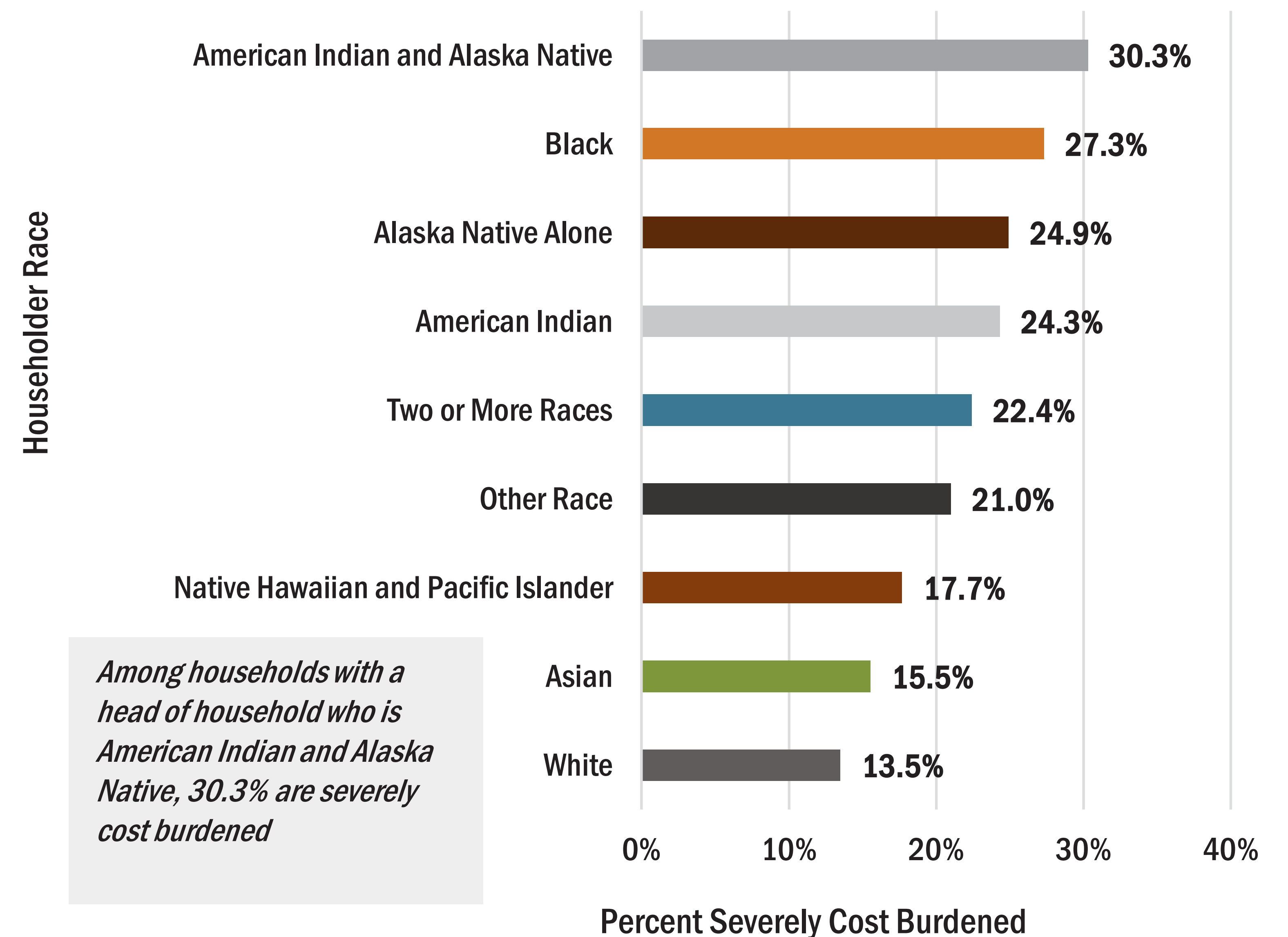
SEVERE COST BURDEN: RACE

People of color are more likely to be severely cost burdened.

Severe Cost Burden by Race



Severe Cost Burden Within Racial Categories

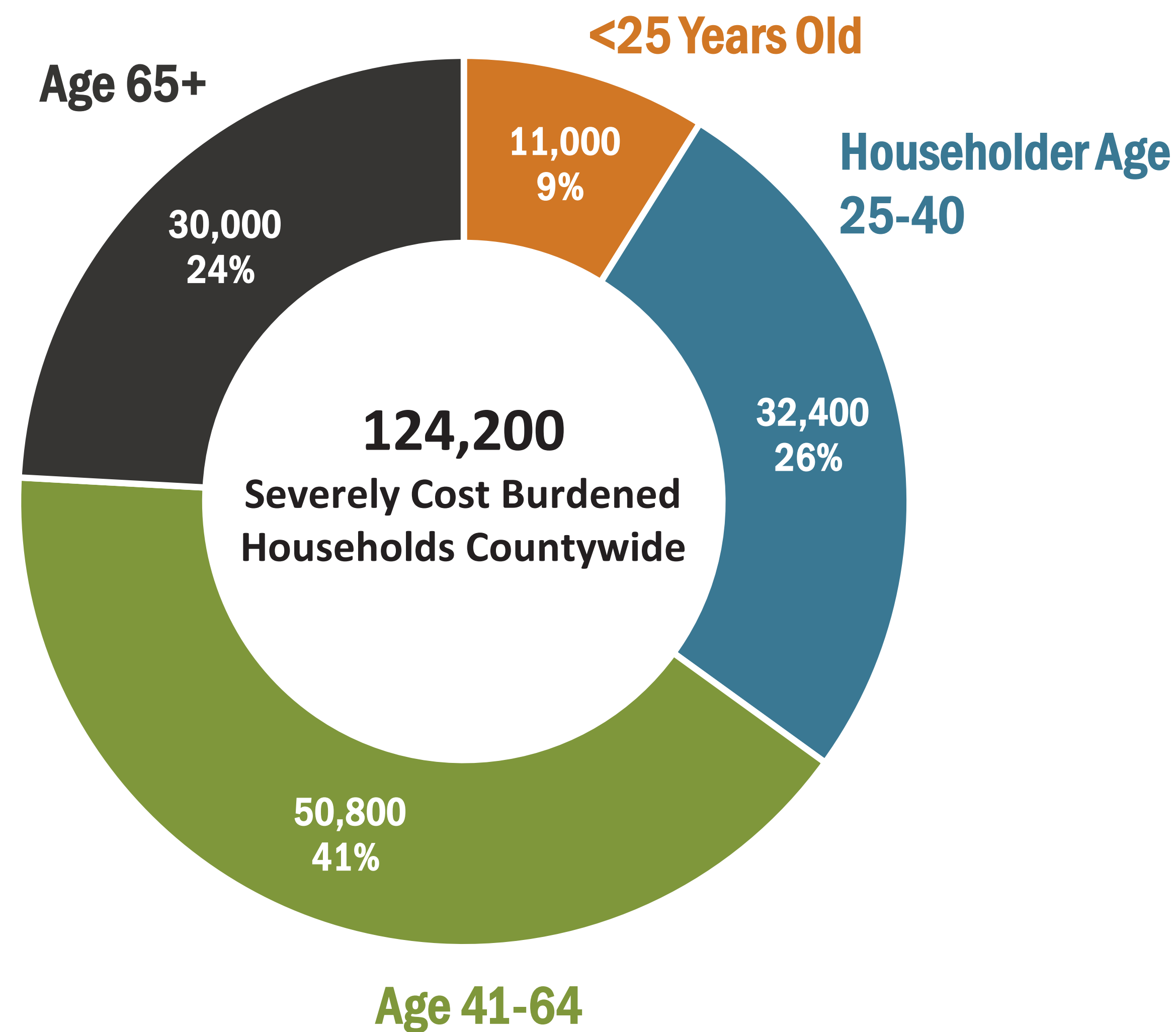


Data Sources: 2011-2015 ACS 5-year Public Use Microdata Samples (PUMS)

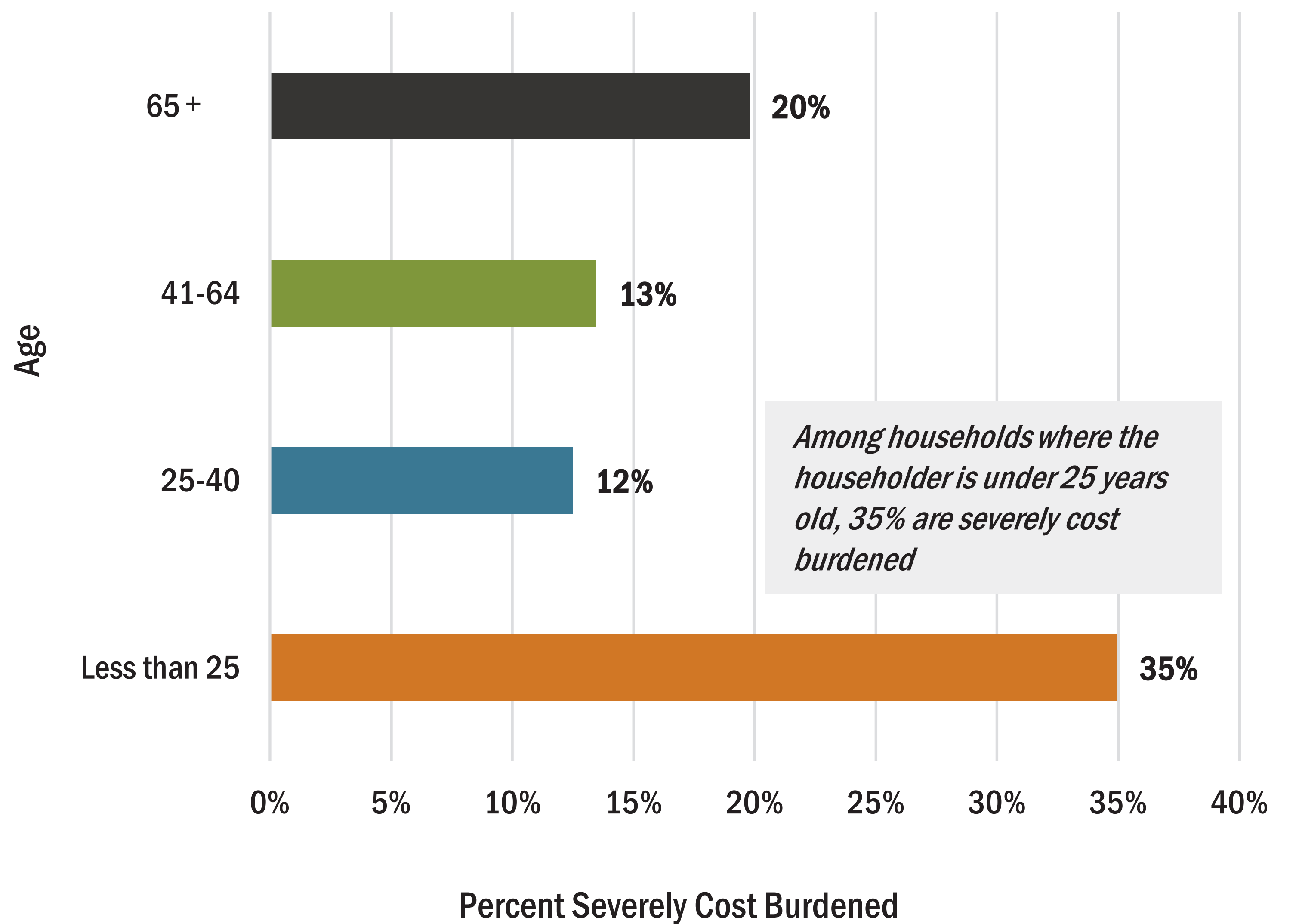
SEVERE COST BURDEN: AGE

The youngest and oldest residents are most likely to be severely cost burdened.

Severe Cost Burden by Age



Severe Cost Burden Within Age Groups

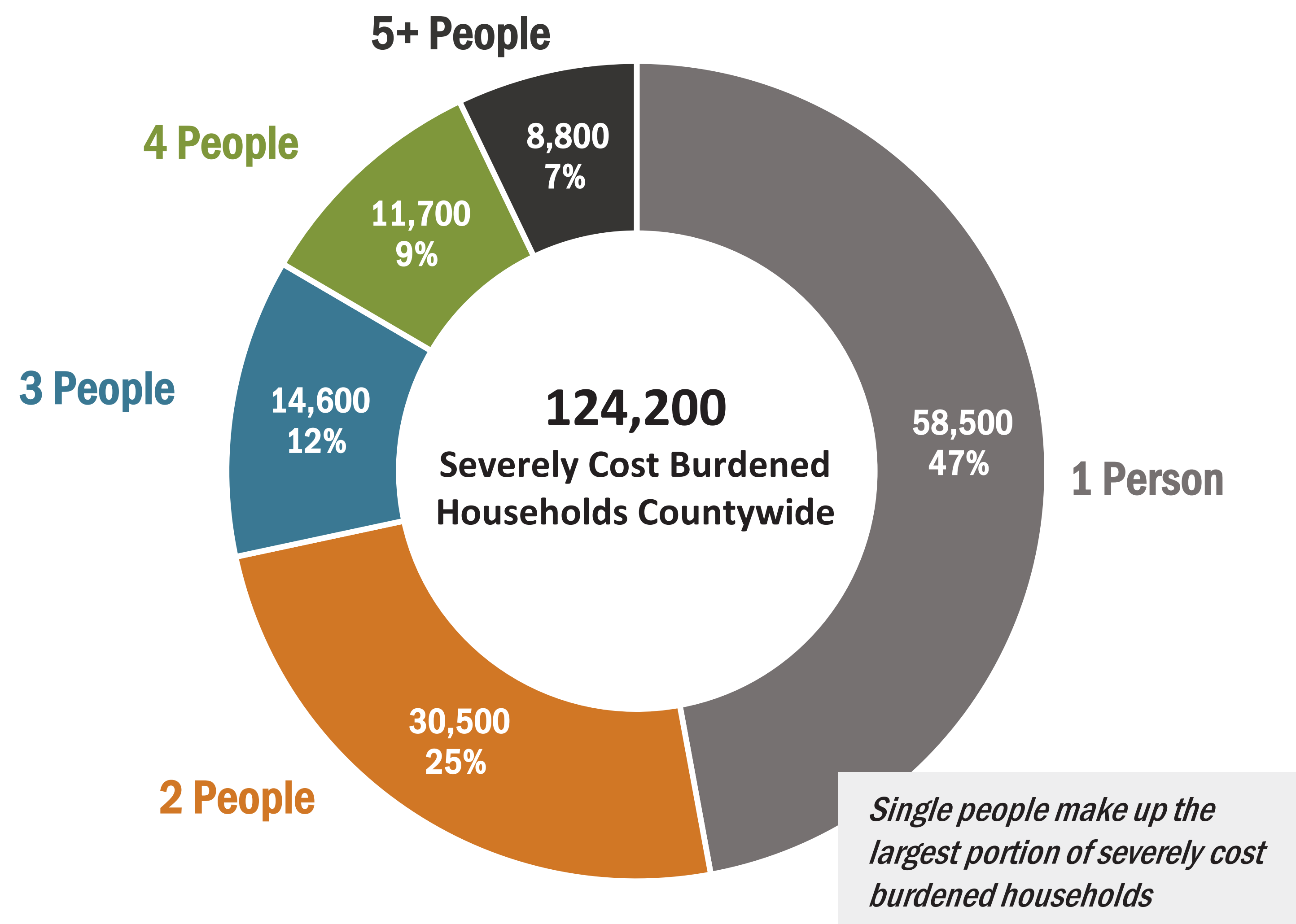


Data Sources: 2011-2015 ACS 5-year Public Use Microdata Samples (PUMS)

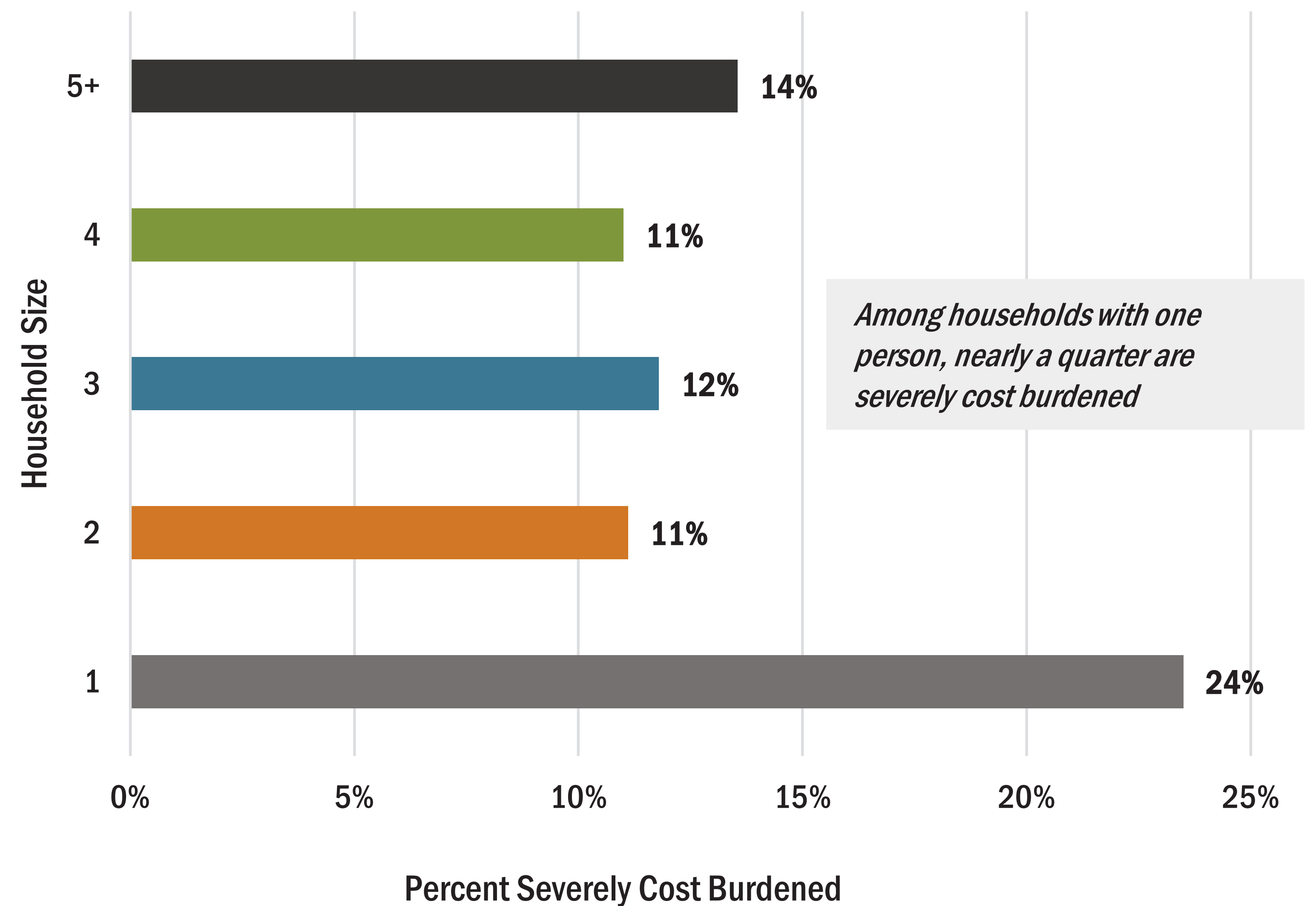
SEVERE COST BURDEN: **HOUSEHOLD SIZE**

One-person households are most likely to be severely cost burdened.

Severe Cost Burden by Household Size



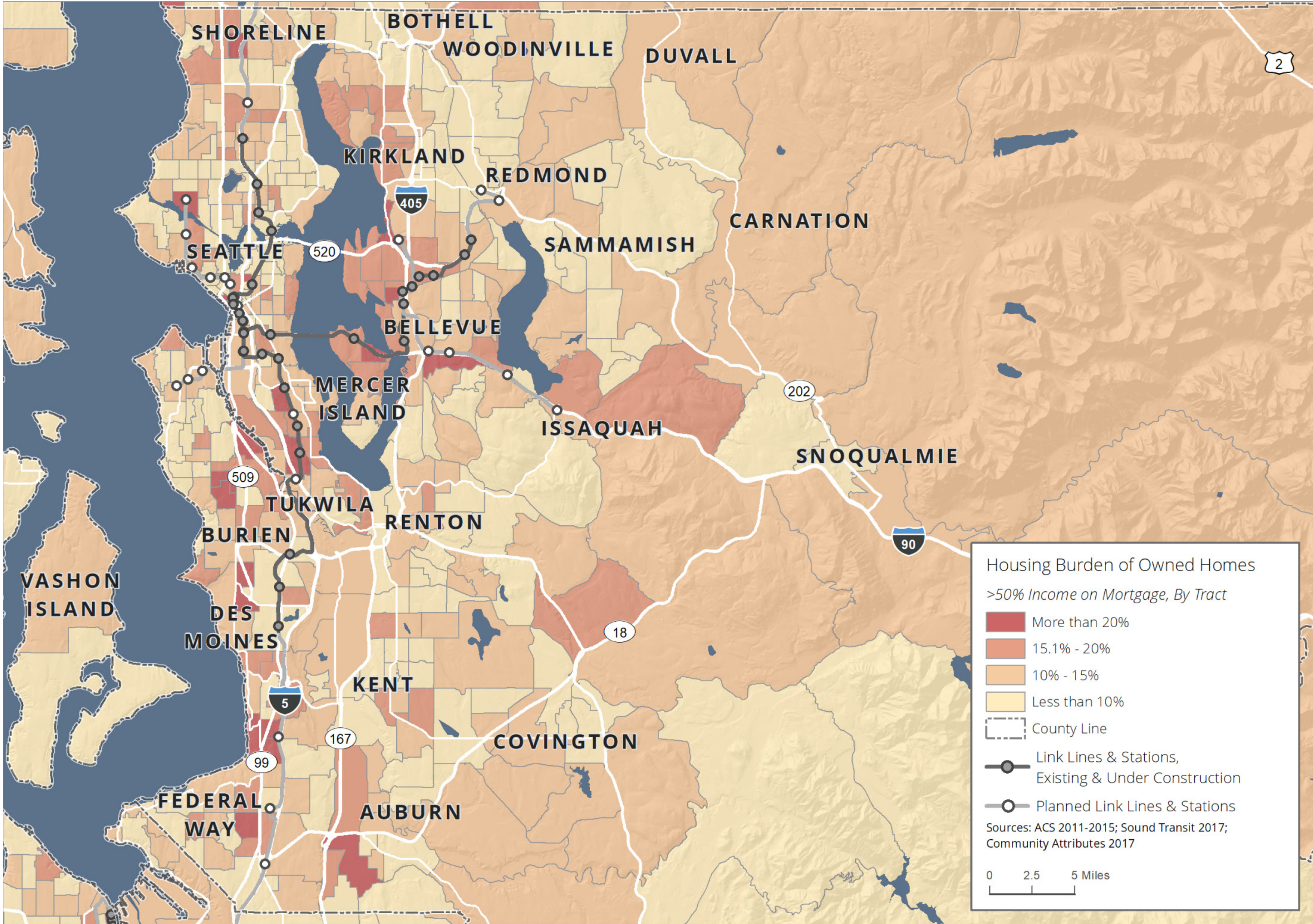
% of All Households that are Severely Cost Burdened, by Household Size



Data Sources: 2011-2015 ACS 5-year Public Use Microdata Samples (PUMS)

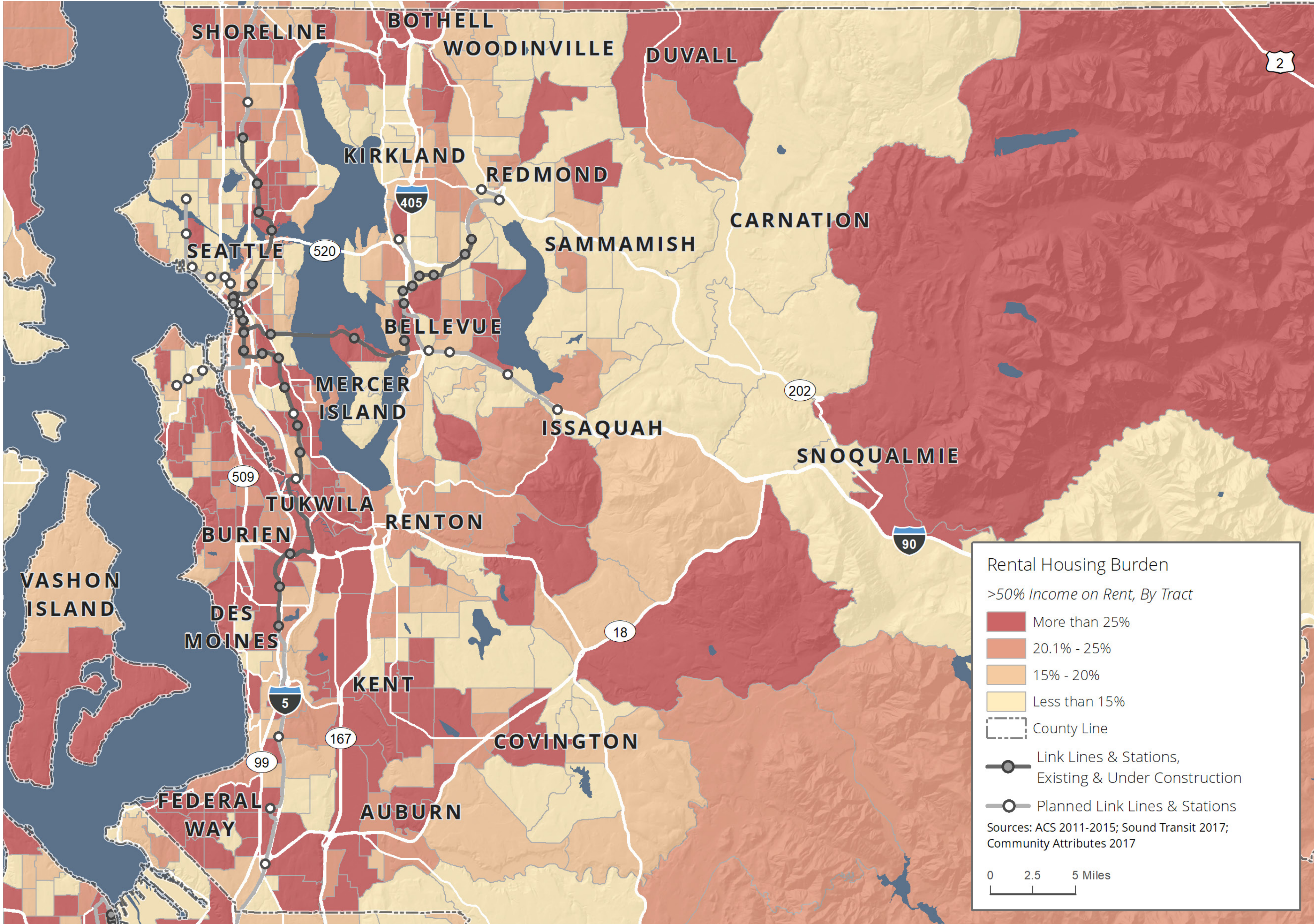
SEVERE COST BURDEN: HOMEOWNERS

Homeowner Cost Burden



SEVERE COST BURDEN: RENTERS

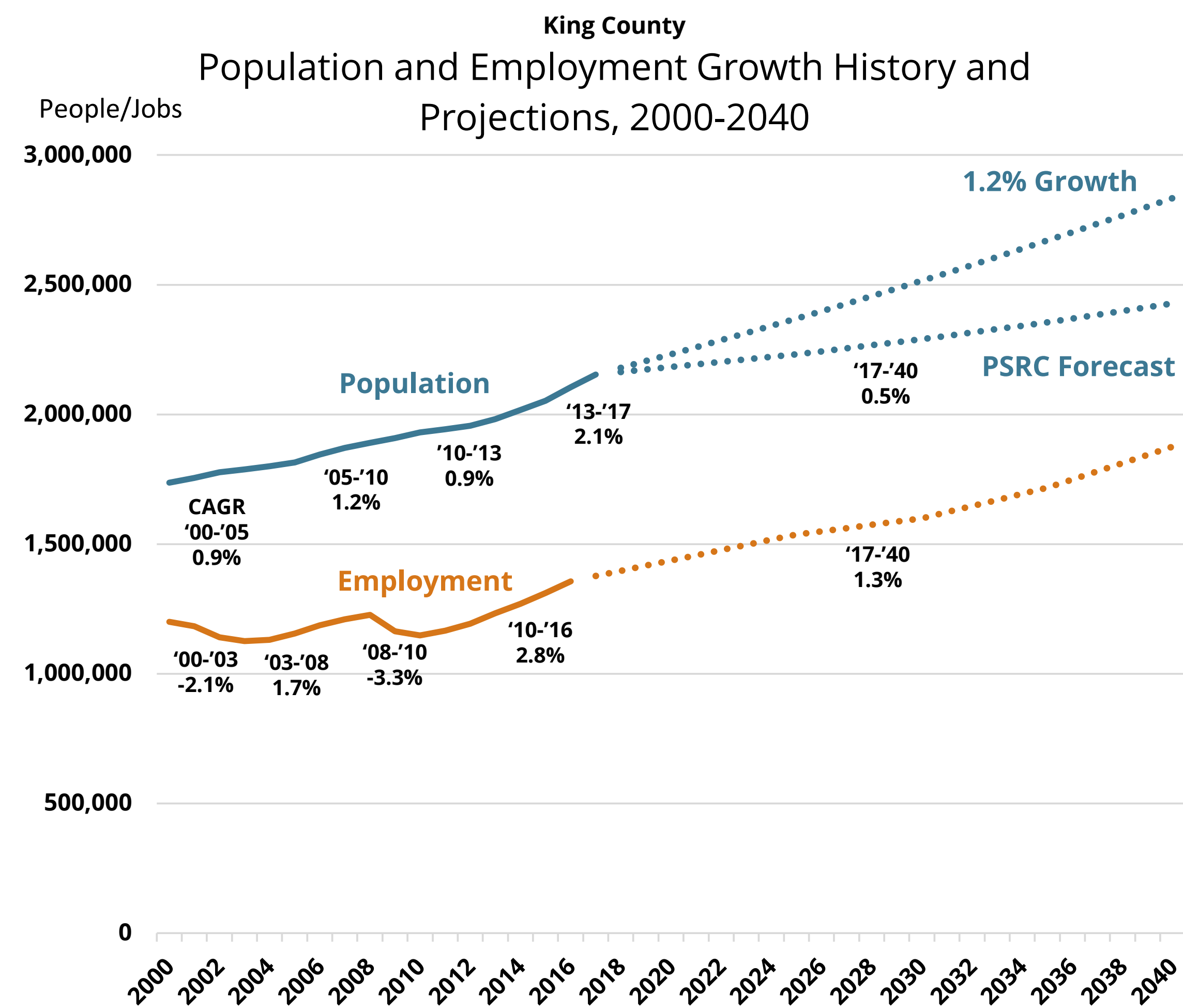
Renter Cost Burden



POPULATION AND JOB GROWTH

King County's population and workforce continues to grow steadily, and more rapidly than has been forecasted. This growth puts market pressure on housing prices.

Population and Job Growth



Sources: PSRC, 2015; Washington State ESD, 2017; Washington State OFM, 2017; Community Attributes 2017

King County Population Growth Rates

