

2024 Comprehensive Plan

Agricultural Production Districts

Road Safety and Agricultural
Land Preservation



W. Snoqualmie Valley Road

Department of Local Services – Road Services Division

John Vander Sluis & Rey Sugui

9/14/2023



Policy R-656a

Goal: Preserve Agricultural Production District acreage

R-656a King County may only approve the removal of land from the Agricultural Production District if it is, concurrently with removal of the land from the Agricultural Production District, mitigated through the replacement of agricultural land abutting the same Agricultural Production District that is, at a minimum, comparable in size, soil quality and agricultural value. As alternative mitigation, the County may approve a combination acquisition and restoration totaling three acres for every one acre removed as follows:

- a. A minimum of one acre must be added into another Agricultural Production District for every acre removed; and
- b. Up to two acres of unfarmed land in the same Agricultural Production District from which land is removed shall be restored for every acre removed.

Road Safety Context

- 150 miles of county roads in APDs
- 100 identified long-term road-related needs in APDs, including life safety needs
- Public right-of-way too narrow for all safety and stormwater infrastructure
- Complex project delivery schedules
 - Long iterative design process to meet regulatory requirements and traffic safety needs
 - Zoning protections in natural resource lands
 - Environmental permitting
 - Grantee deadlines
 - Unpredictable right-of-way acquisition phase
 - 3 month construction windows in fish habitat
 - *Identification of acceptable replacement land with willing sellers (and negotiation with owners)*
 - *Council review and approval through next Comprehensive Plan update (14 month process)*
- Delays → Risk, Cost, and/or Infeasibility

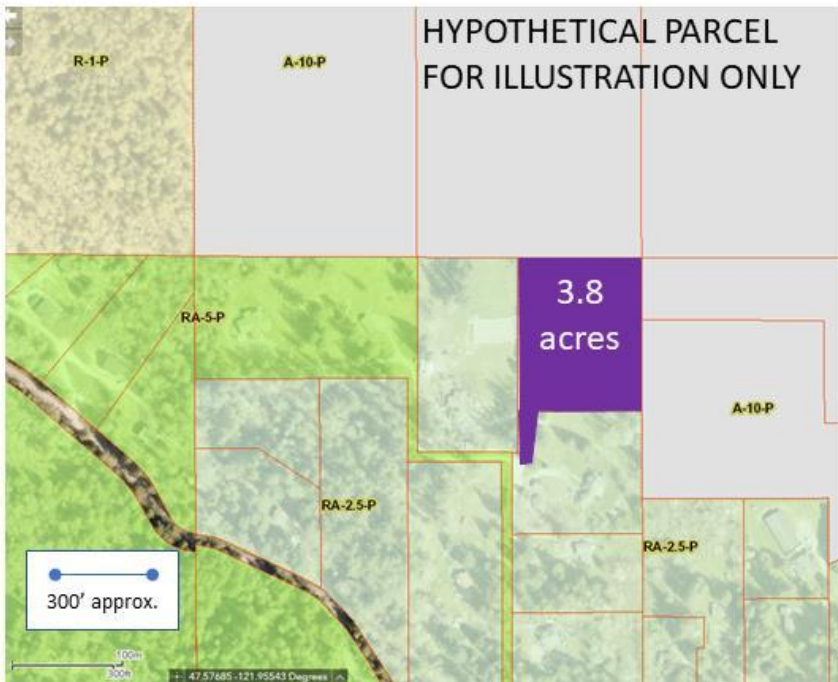
Policy Concept

Allow “replacement” land to be added to the APD as “credit” for future removals of land for road project construction

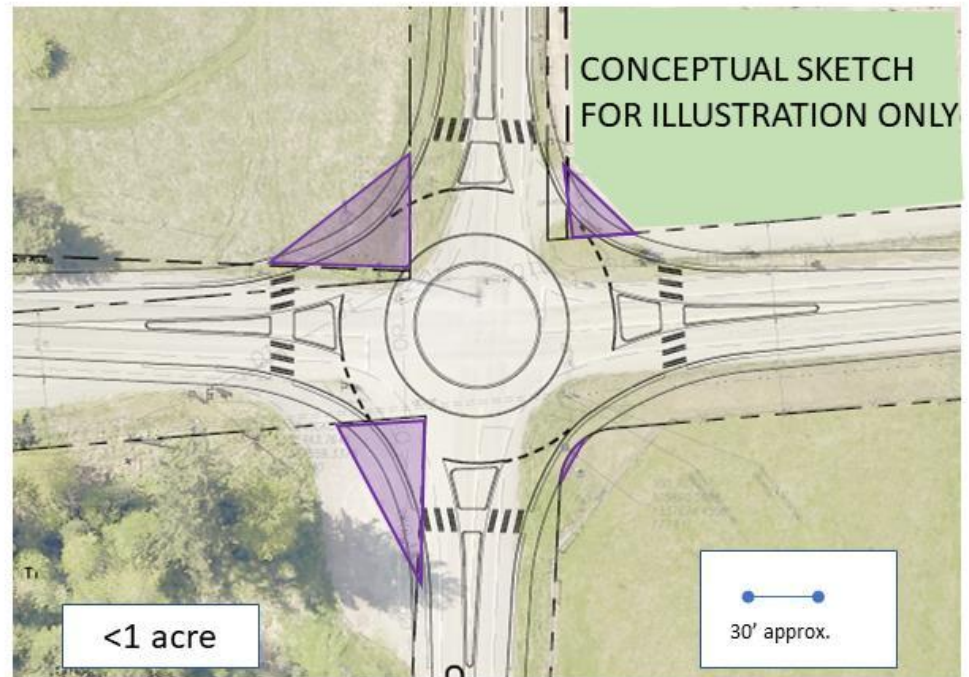
- Reduces one element of project complexity
- Allows one addition to mitigate several future smaller removals (meeting 1:1 requirement)
- Applies APD protection to new land more quickly
- All other policy requirements under R-656a remain in effect

Illustration (Conceptual)

Initial land addition



First subsequent removal



Discussion

