

Battery Energy Storage Systems (BESS) development code ordinance

- a Battery Energy Storage Systems (BESS) development code ordinance was introduced by Perry and Upthegrove: Proposed Ordinance [2023-0263](#)



Bainbridge Island Residential Pilot
Installed 2019
6 kW / 15.5 kWh



Samish Battery Storage
Installed 2023
50 kW / 336 kWh



Glacier Battery Storage
Installed 2015-2016
2 MW / 4.4MWh



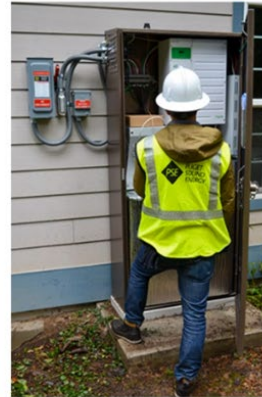
Proposed Ordinance 2023-0263

Summary

- Allows consumer-scale BESS facilities as an accessory use anywhere accessory uses are permitted.
 - Consumer-scale BESS facilities are solely to store energy for use on the site on which the system is located.
 - As an accessory use, limits consumer-scale BESSs to 1 megawatt (MW) facilities.
 - For larger facilities above 1 MW, regardless of the intent of the use (on-site only and/or off-site), those are regulated as a new "BESS" use.
- BESSs would be permitted uses in all zones, except in the R1-R48 zones where it would be a conditional use.
- In all zones:
 - Required to substantively meet the same financial guarantees as fossil fuel facilities
 - 10 ft separation required between all structures and landscaping or other vegetation
 - Permanent barriers required between areas with vehicle access and structures or buildings containing batteries
- Additionally, in the A and F zones:
 - Limited to uses that will not convert more than two acres of farmland or forestland, or 2.5% of the farmland or forestland, whichever is less. *(this is an existing condition that applies to non-hydroelectric generation facilities and renewable energy generation facilities that would now also apply to BESSs)*
 - *(additional new condition)* If a renewable energy generation system **and** a battery energy storage system are proposed on the same site, that calculation must be cumulative of both uses.
- Expressly disallows BESSs (at any size) from being sited in setbacks of regional utility corridors
- Expressly subjects BESSs to development standards for "utility developments"

Timeline: PO 2023-0263

- August 22, Introduced, Local Services and Land Use Committee
- **Sept 26, Vote, Local Services and Land Use Committee**
- ??, Vote Full Council



Bainbridge Island Residential Pilot
Installed 2019
6 kW / 15.5 kWh



Samish Battery Storage
Installed 2023
50 kW / 336 kWh



Glacier Battery Storage
Installed 2015-2016
2 MW / 4.4MWh

